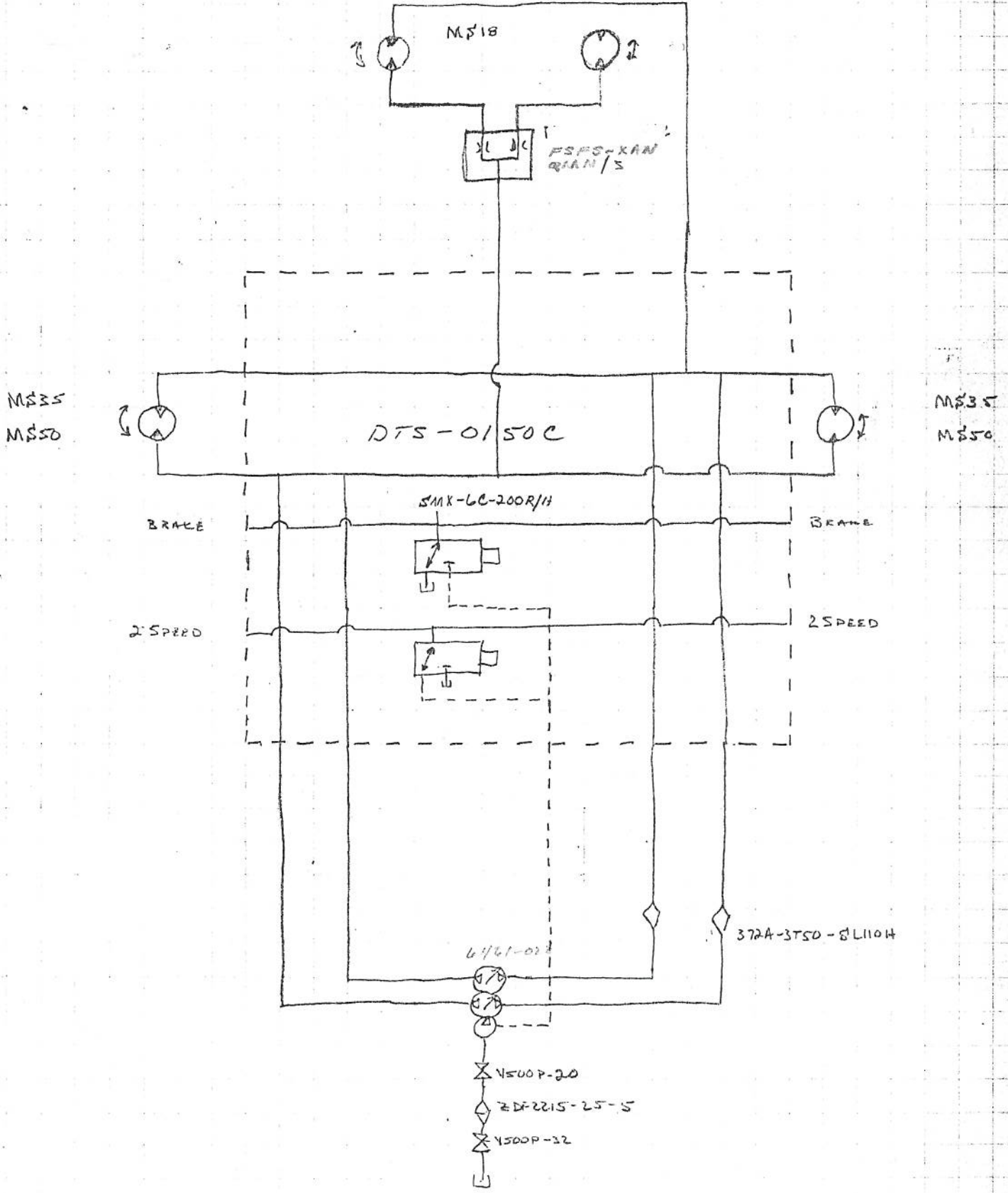


1998 SELF PROPELLED HARVESTER GROUND DRIVE #1713
 DTS-0150C

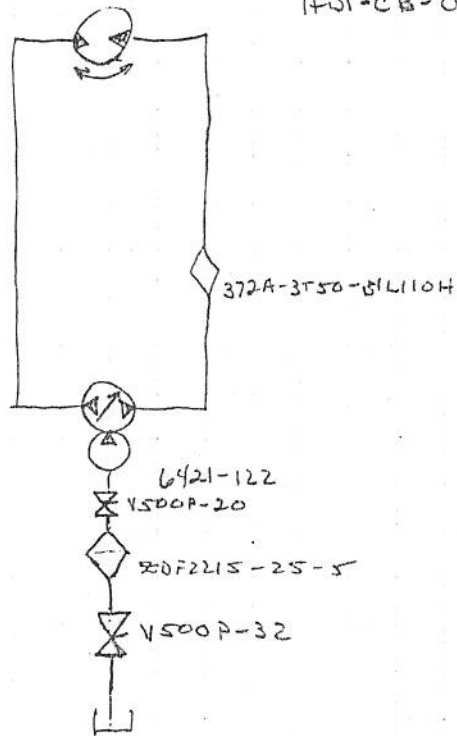


1998 65" Air Head

1713

5431-068

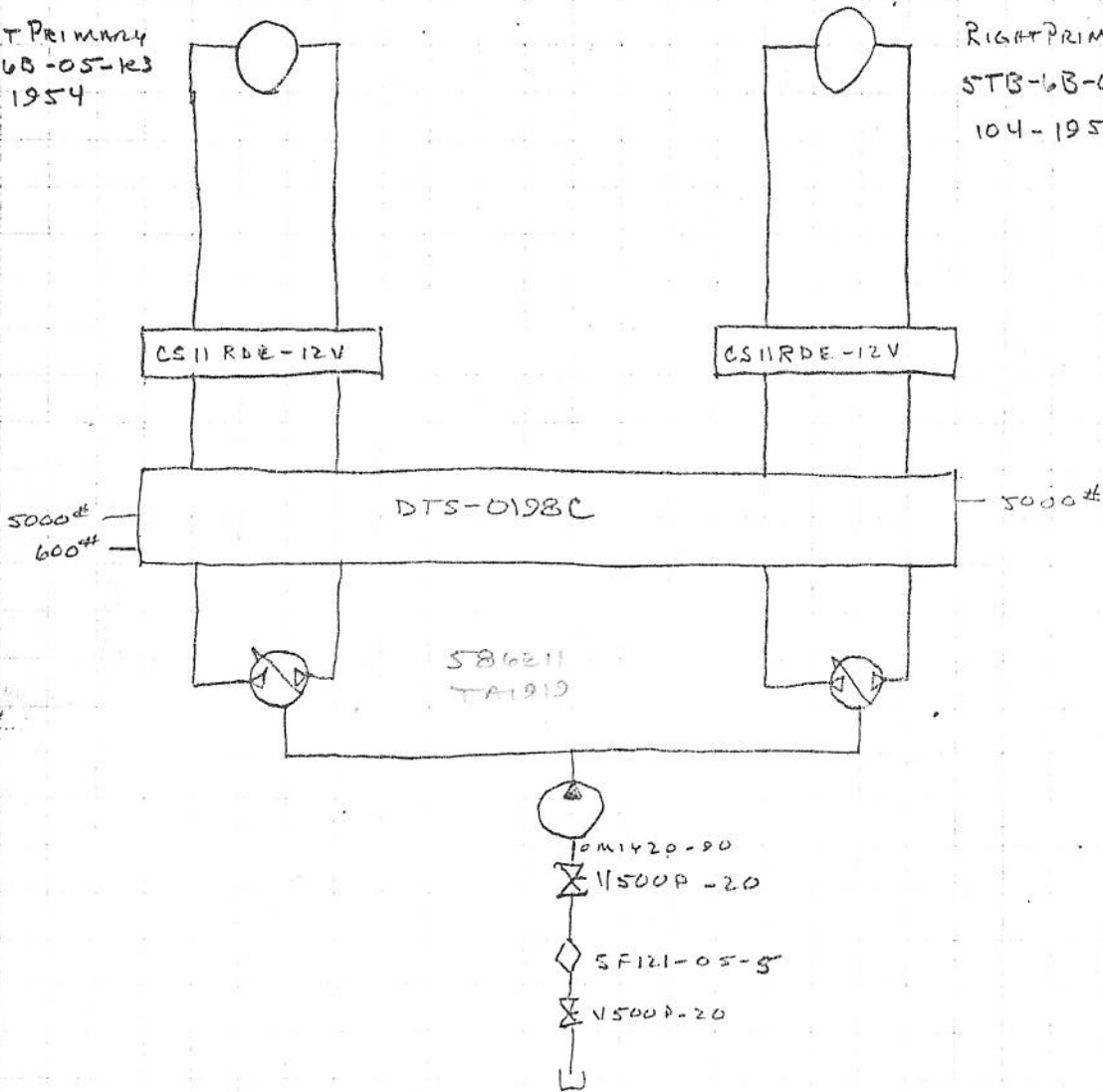
72
HDI-CB-068 Gear Box



1998 4F6 RSP.H W/65" A.H. / 40" A.H.
N-14 / TA1912 / MS 50 / TAN 64 / REAR STEER / REVERSING - 2 PRIM - SEC / DVV

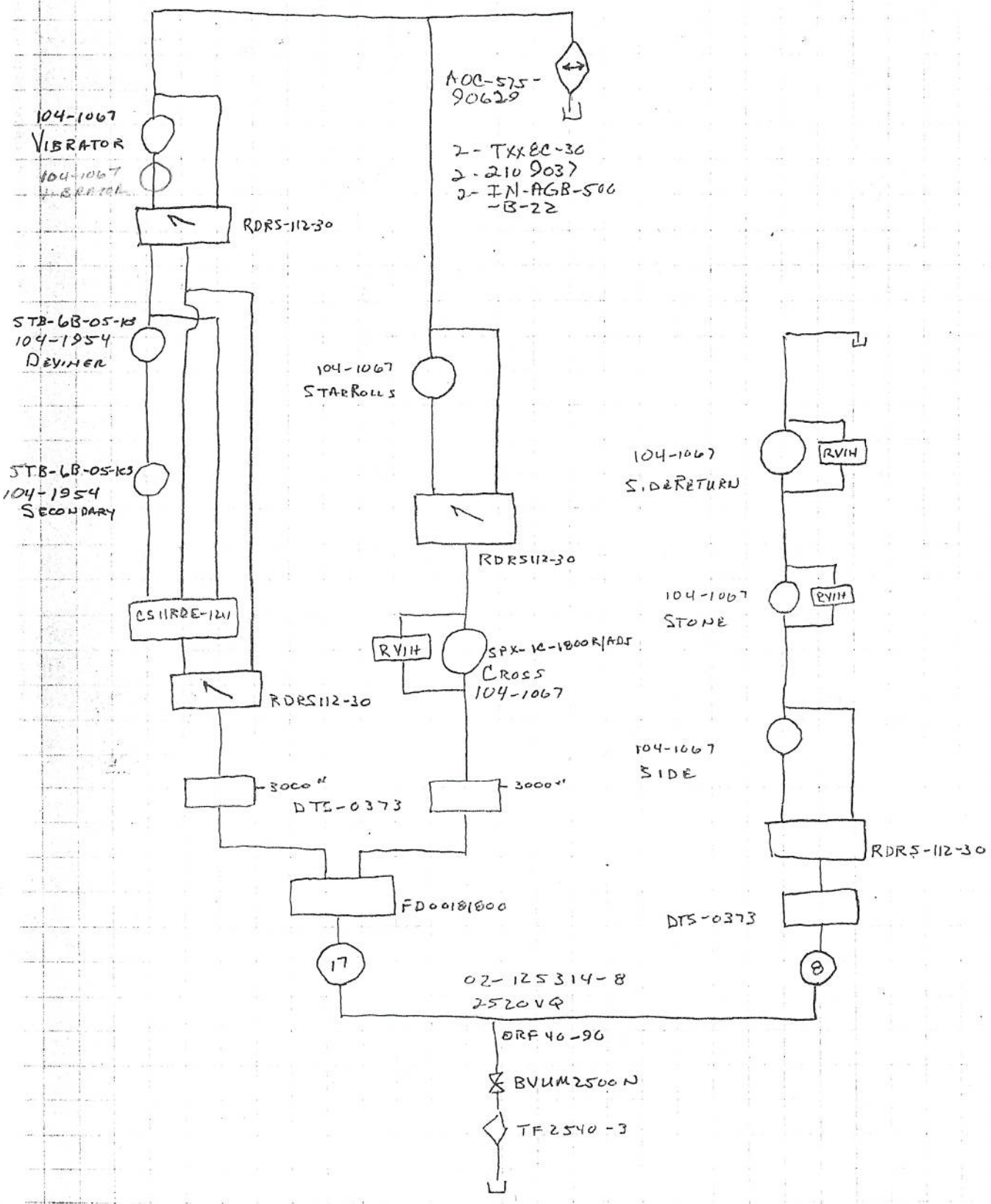
LEFT PRIMARY
STB-6B-05-K3
104-1954

RIGHT PRIMARY
STB-6B-05-K3
104-1954

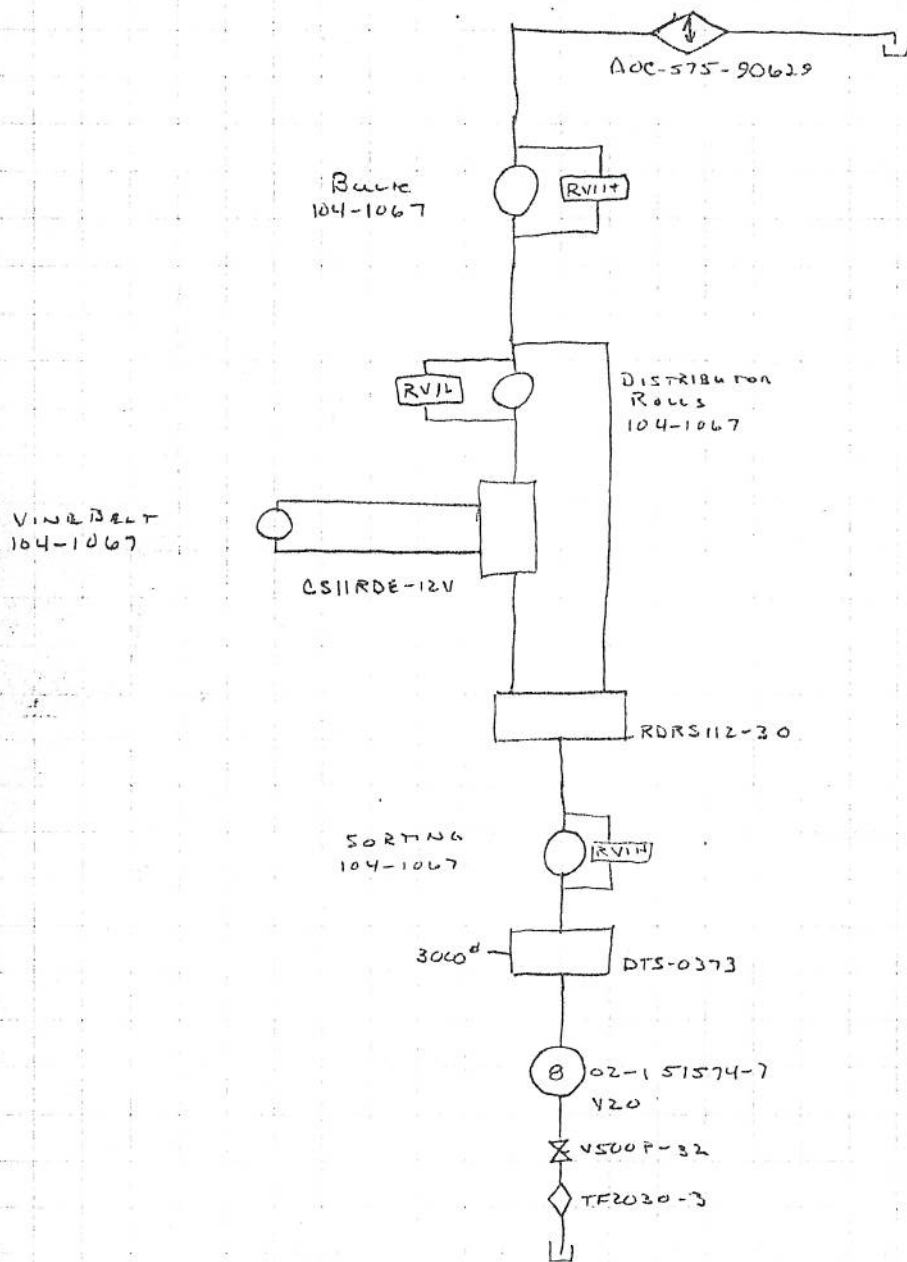


PRIMARY CIRCUIT

1998 SELF PROTECTED HARVESTER
SECONDARY/CROSS/SIDE CIRCUITS A
65" A.H. / 40" A.H.



1998 4#6 RSPH W/65" A.H / 40" A.H. A
SORTING CIRCUIT W/ VINE BELT



1998 4 1/2" RSPH W/65" x 40" A.H.
 OPTION ADDON: REAR STEERING

A

