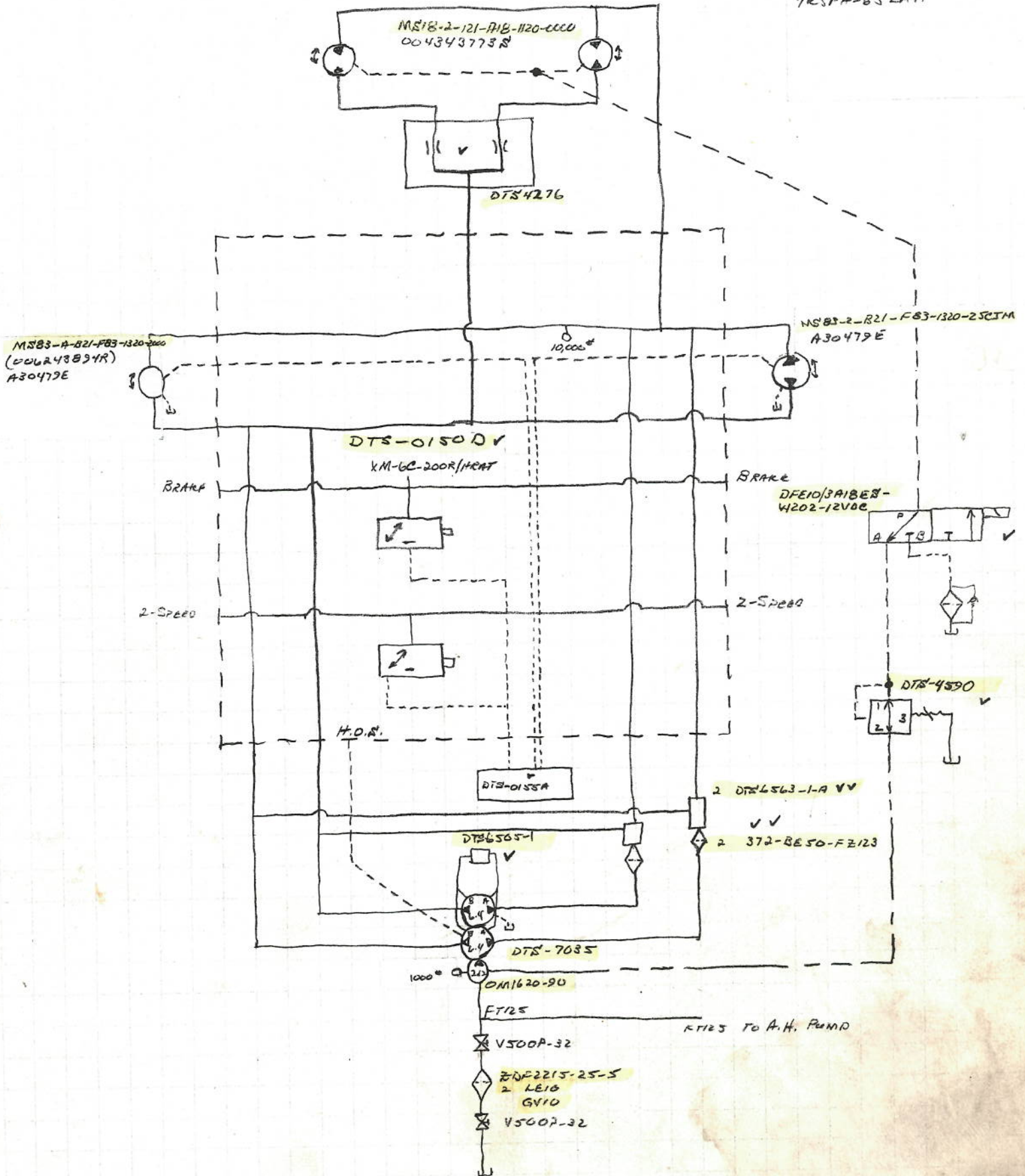


Paramount

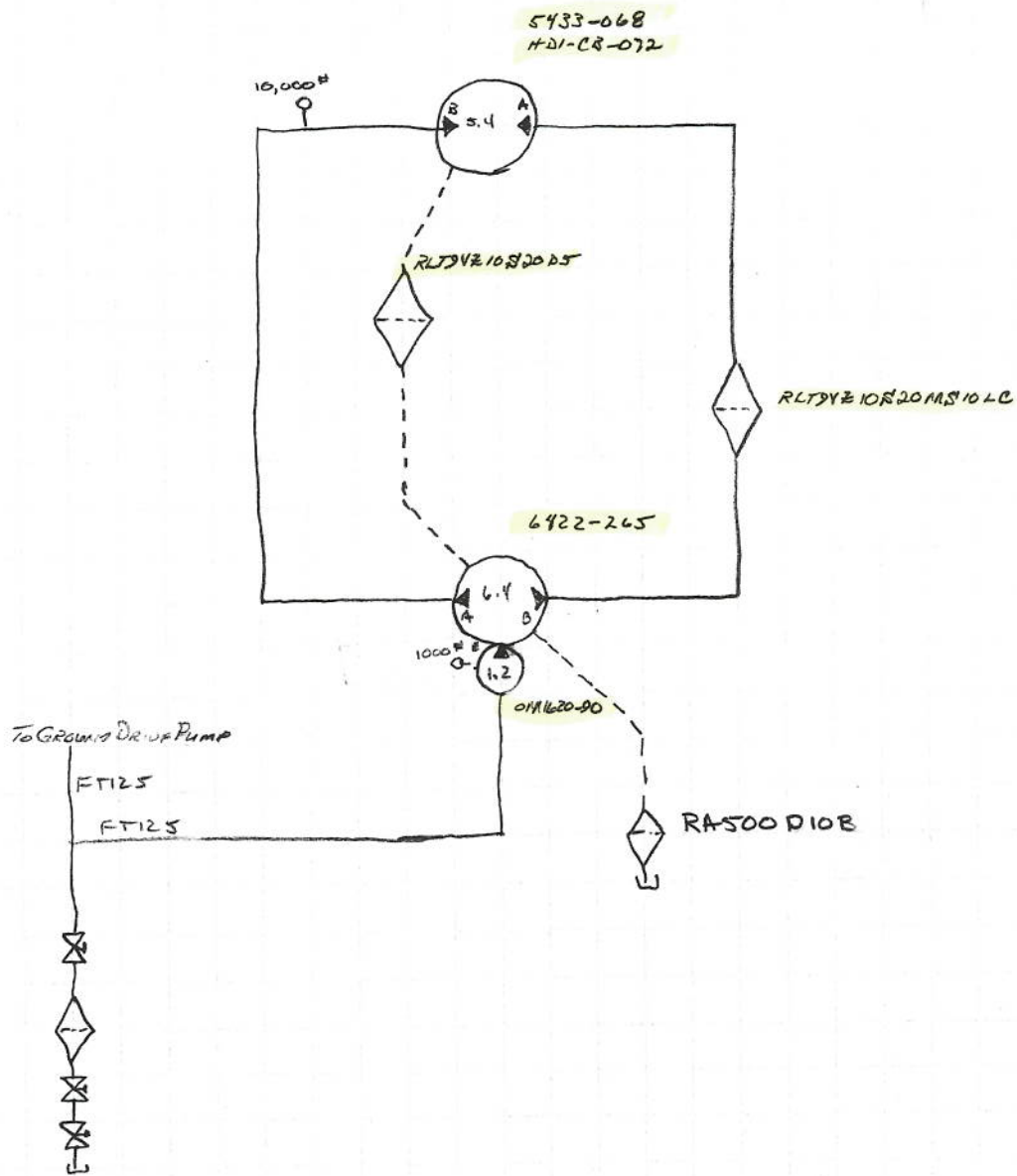
#10042

4 RSPH ^W65" AH

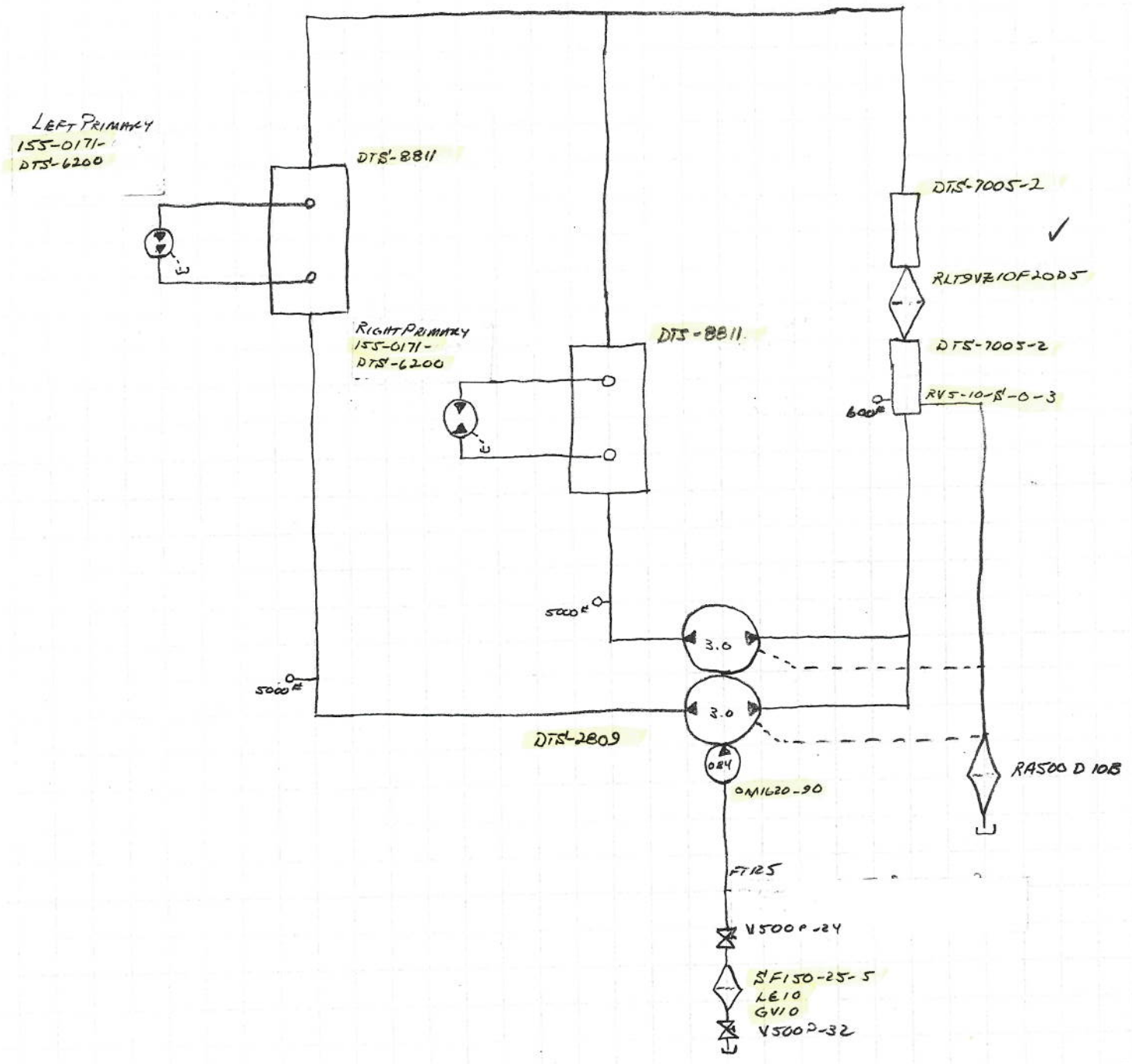
6/30/16
 #10042
 PARAMOUNT FARMS
 4RSPH-65LAH



6/30/10
#10042
PARAMONT FARMAS
YRSPH-LSLAH



6(30)10
 #10042
 PARATROUPT FRAME
 YLSPH65LAH

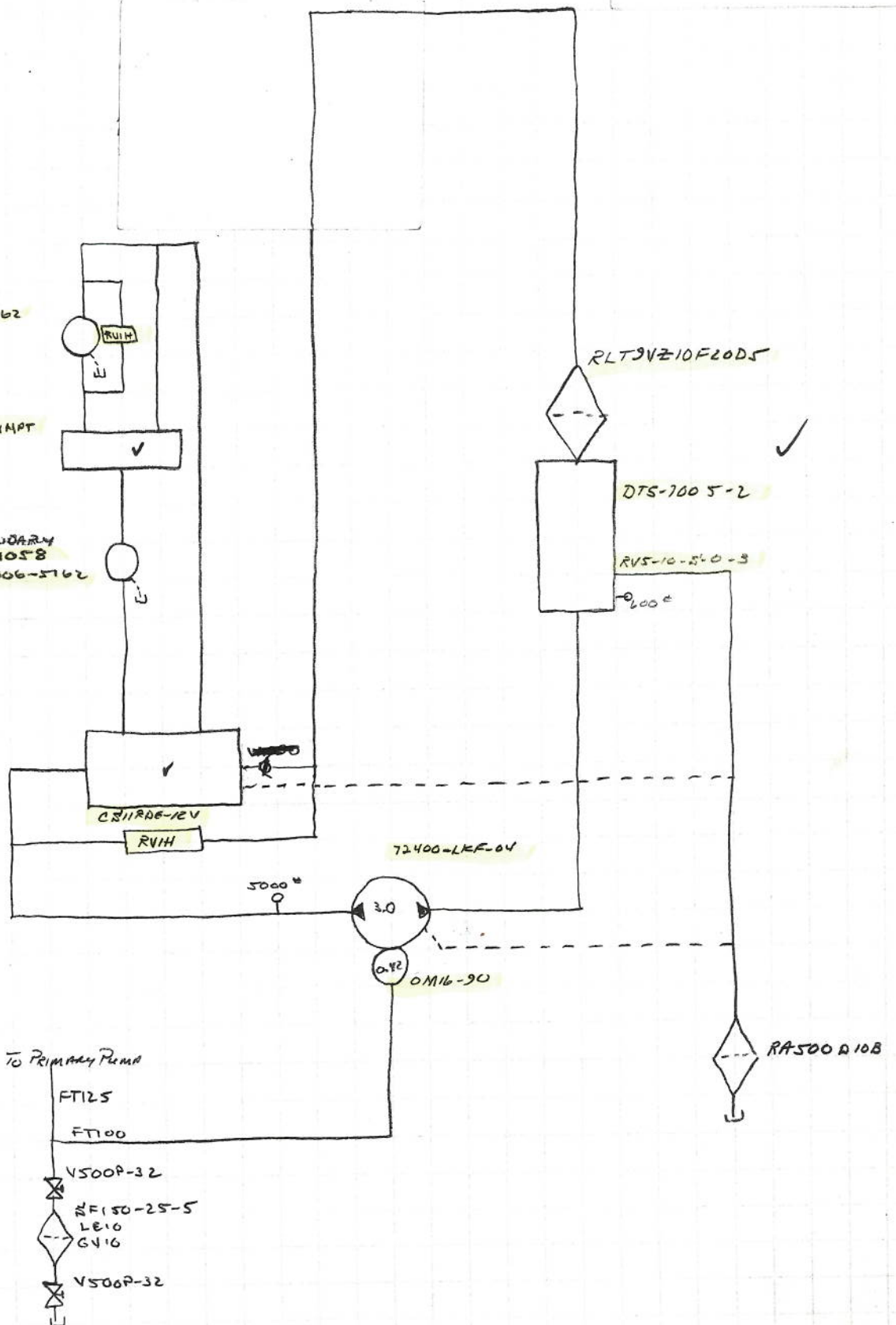


6/30/10
E10042
PARAMOUNT FARMS
4RSP1465L4H

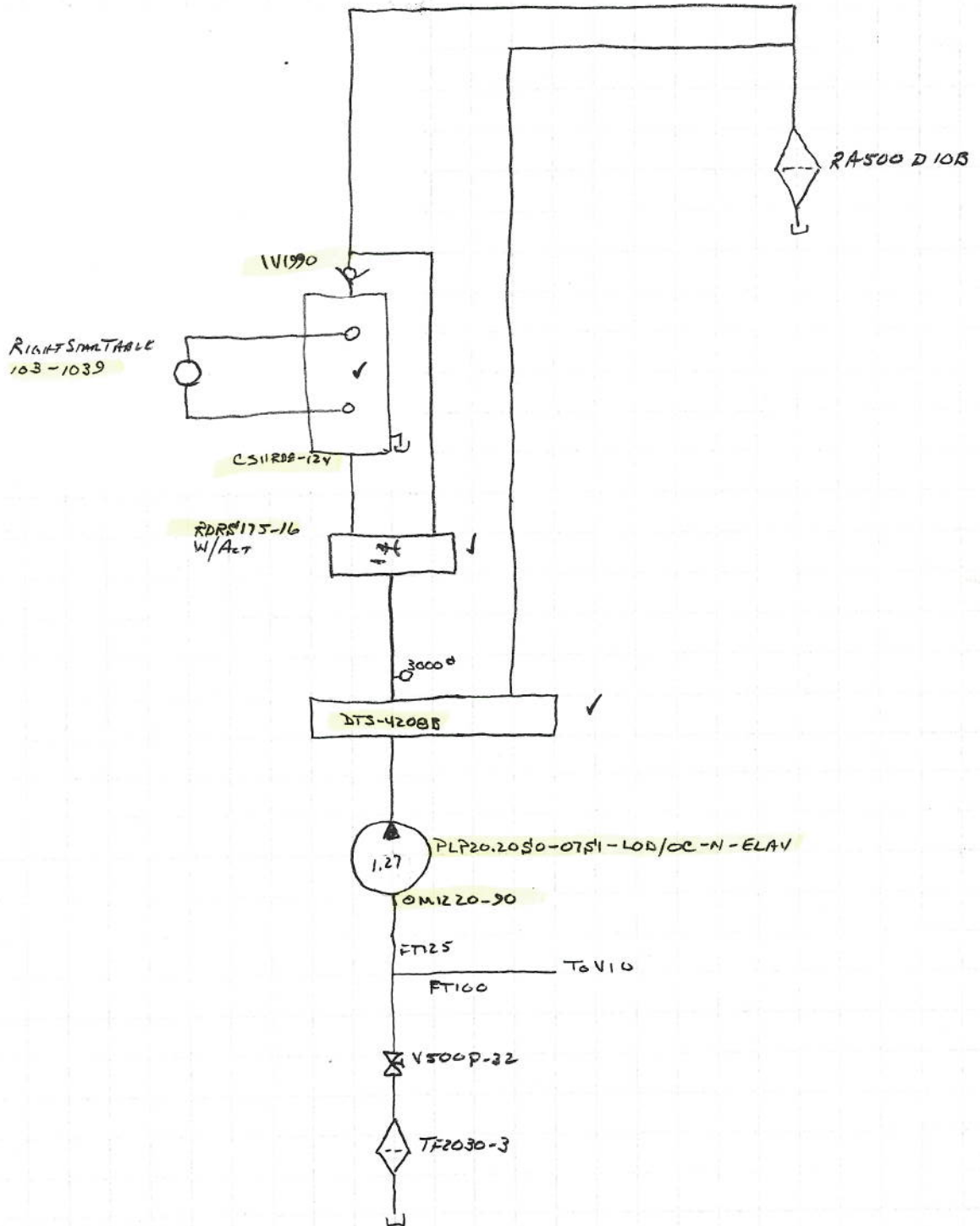
Denison
112-1058
28-006-5162

FP55-314MPT

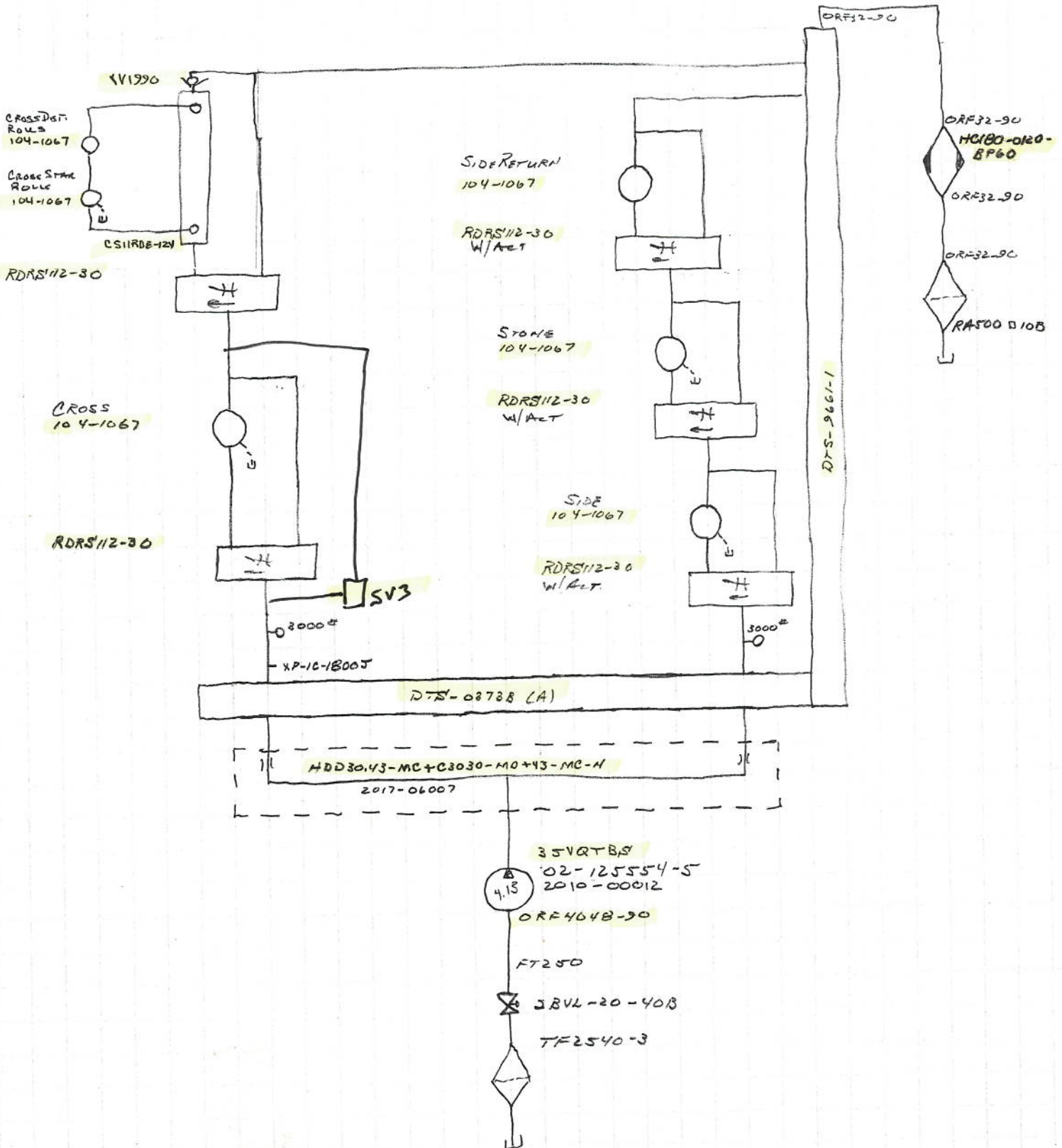
Secondary
112-1058
28-006-5162



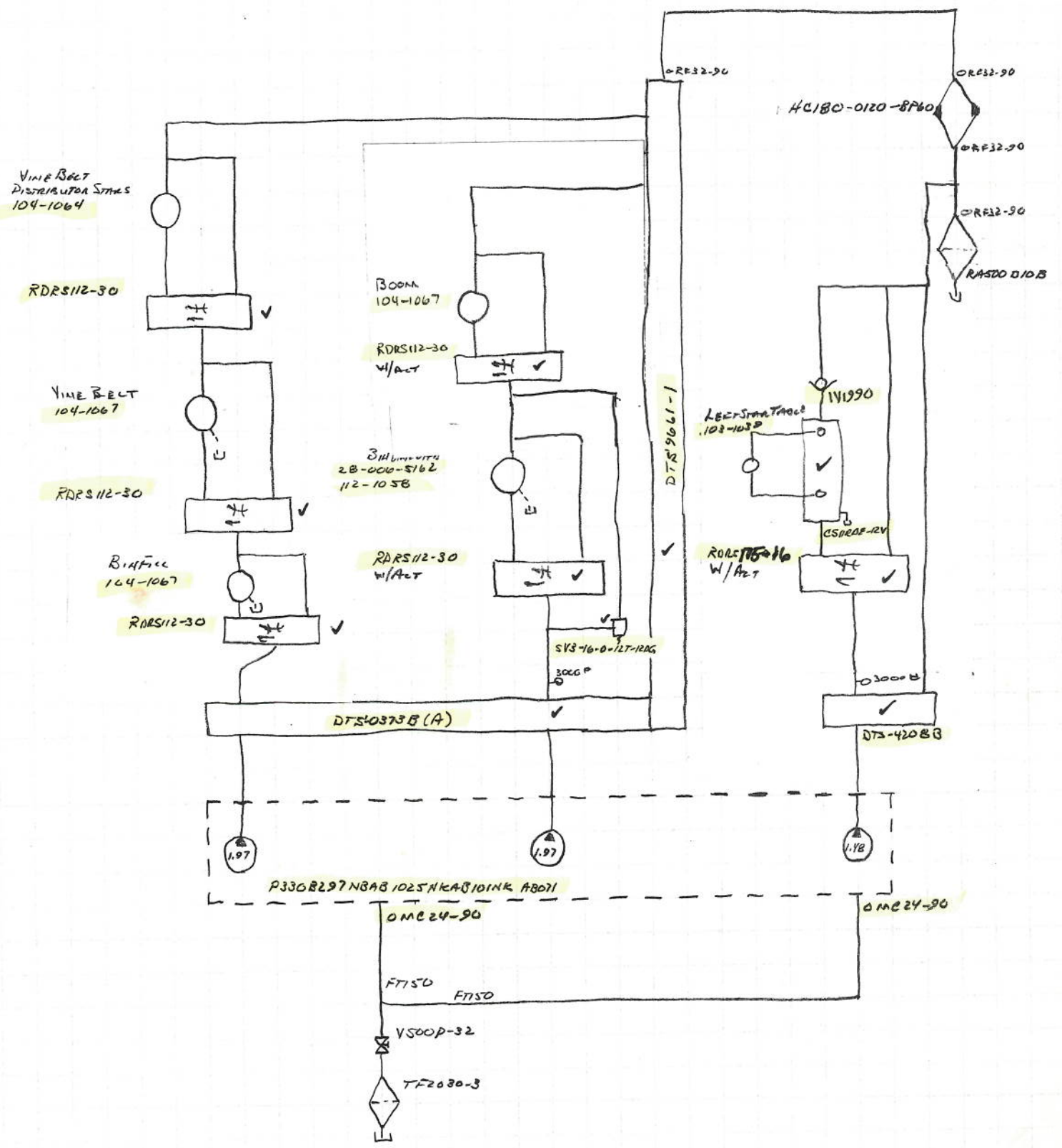
6/30/10
#10042
PARA FRONT FARMS
4RSPH-65 LPH



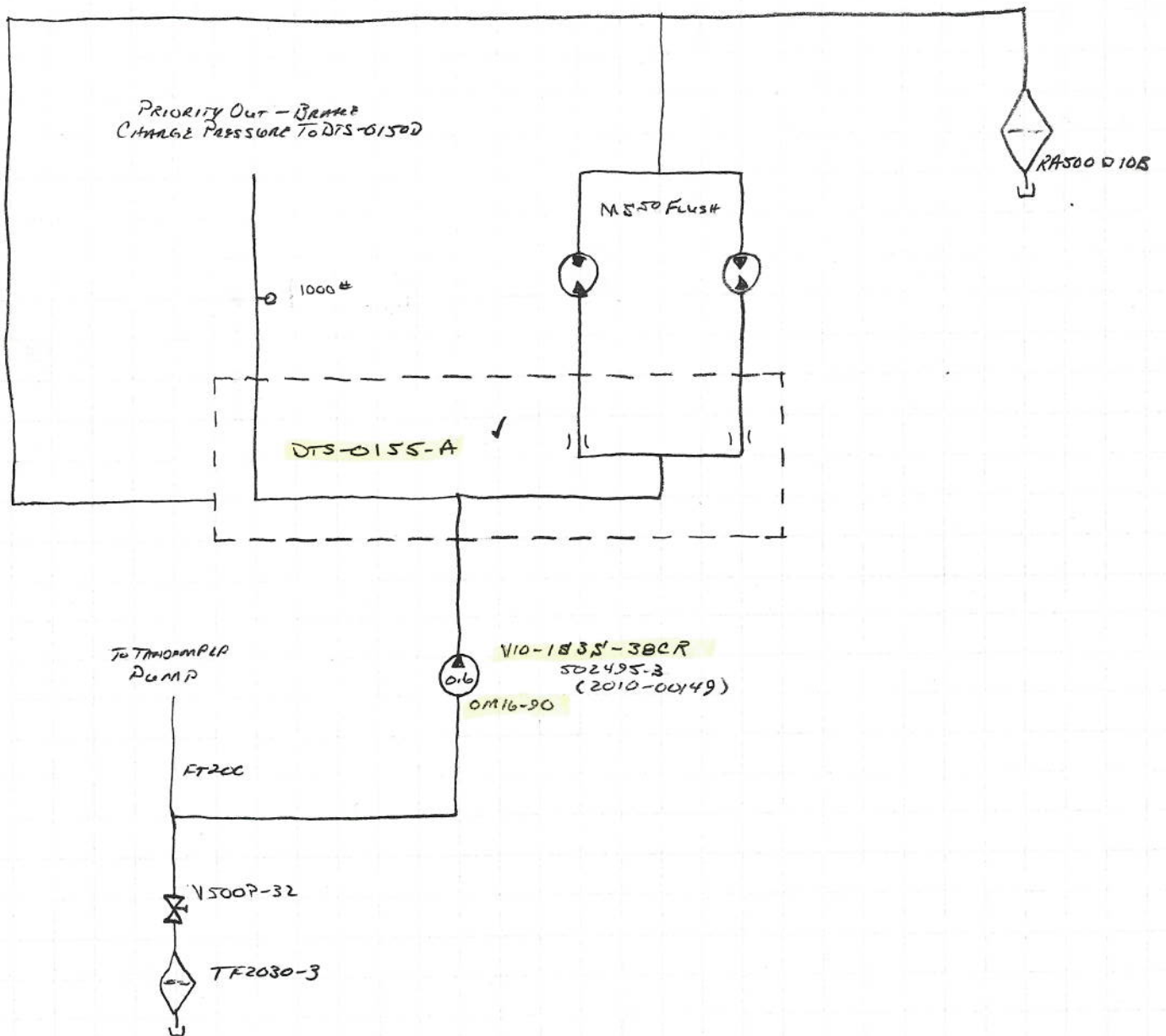
7/13/16
 E10042
 PARANMONT FARM
 4RSP1465CAH



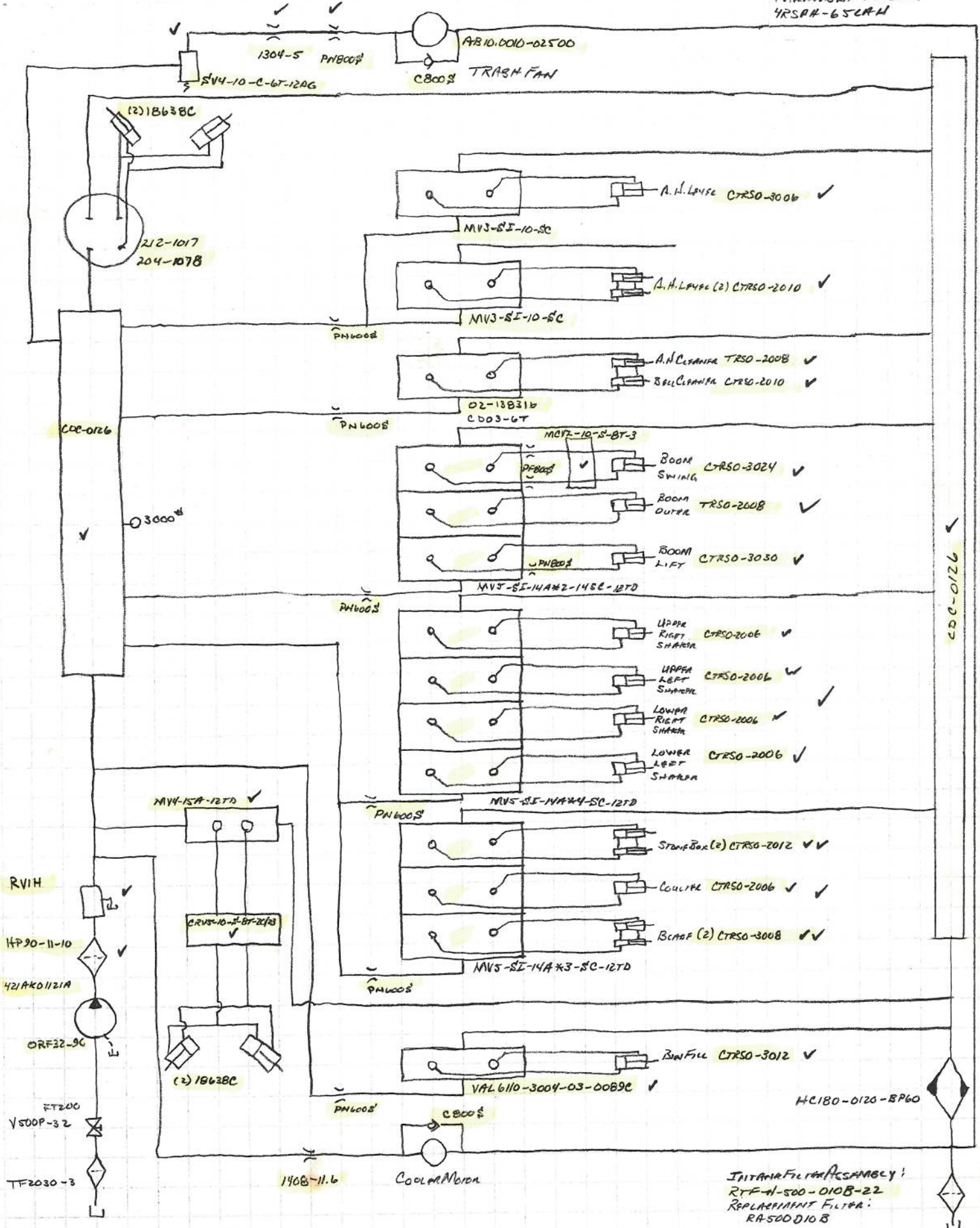
6/30/10
 E10 C42
 PARAMOUNT FENCE
 4RSP#65 LAA



6/30/10
#10042
PARAMONT FARMS
4RSP#65LA#



6/30/16 #10042
 PARAMOUNT FORMS
 YRSPH-65CAM



INITIAL FILTER ASSEMBLY:
 RYF-A-500-010B-22
 REPLACEMENT FILTER:
 RA500D10B

4" FWM

- (4")
- TF2540-3
- 2 1/2" 90° STEEL
- 2 1/2" CLS NIP
- 2BNL20-40B
- FT250
- * 35VQTB8
- 3" X 2" BUSH
- 2" CLS. NIP
- V500P-32
- FT200
- ORF32-90
- ~~FT200~~
- ~~W42-32PK~~
- W42-32PK
- ZDF2215-15-5 ✓
- W43-32PK
- 2" 90° STEEL
- 2" CLS NIP
- V500P-32
- 2" CLS NIP
- 2" TEE X
- 2" X 1 1/4" BUSH
- X FT125
- 2" 90° STEEL
- 2" X 1 1/4" BUSH
- FT125
- * T6.4/6.4
- * L.4EE

3" FWM

- (3")
- TF2030-3
- 2" 90° STEEL
- 2" CLS NIP
- V500P-32
- 2" 90° STEEL
- FT200
- V500P-32
- FT200
- * 421AK

3" FWM

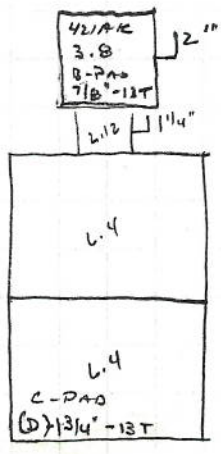
- (3")
- TF2030-3
- 2" 90° STEEL
- 2" CLS NIP
- V500P-32
- 2" CLS NIP
- 2" TEE X
- X 2" X 1 1/2" BUSH
- FT150
- * TRIPLE COMMA.
- 2" 90° STEEL
- 2" X 1 1/2" BUSH
- FT150
- * TRIPLE COMMA

3" FWM

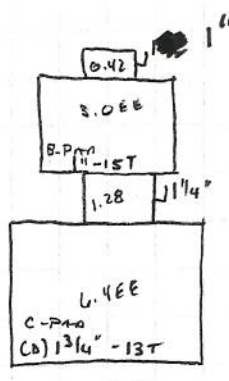
- (3)
- TF2030-3
- 2" 90° STEEL
- 2" CLS NIP
- V500P-32
- 2" CLS NIP
- 2" TEE X
- X 2" X 1 1/4" BUSH
- FT125
- * PLP20.20
- 2" 90° STEEL
- 2" X 1" BUSH
- FT100
- * V10

(4")

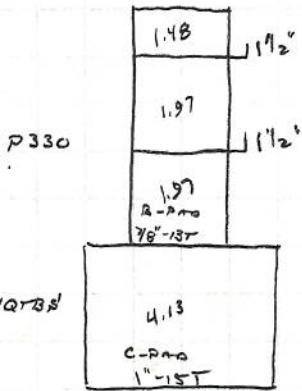
- 4" X 2" BUSH
- 2" 90° STEEL
- 2" CLS NIP
- V500P-32
- 2" X 1 1/2" BUSH
- 1 1/2" CLS NIP
- 2" X 1 1/2" BUSH
- V500P-32
- 2" CLS NIP
- 2" TEE X
- 2" X 1 1/4" BUSH
- 1 1/4" 45° STEEL
- FT125
- * TANDEM 3.0EE
- 2" 90° STEEL
- 2" X 1" BUSH
- FT100
- * SINGLE 3.0EE



L.R. C-PAD



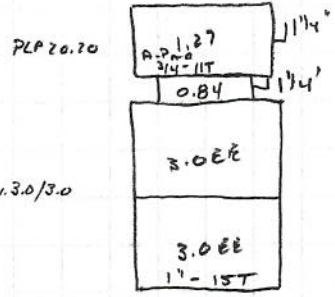
L.L. C-PAD



T.R. C-PAD

DURST

DRIVE PLATE - TORSION CONTROL 19310



T.L. B-PAD

L.R. TANDEM L.4

421AK

L.L. L.4EE

3.0EE

T.R. 35VQTB8

TRIPLE COMMA

T.L. TANDEM 3.0.

PLP20.20

ENGINE V10

GROUND DRIVE

SPEEDING CIRCUIT

AIR HOSE

SECONDARY

CROSS

SIDE

BIN FULL

BIN UNLOAD

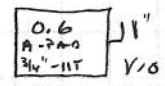
LEFT START TABLE

LEFT PRIMARY

RIGHT PRIMARY

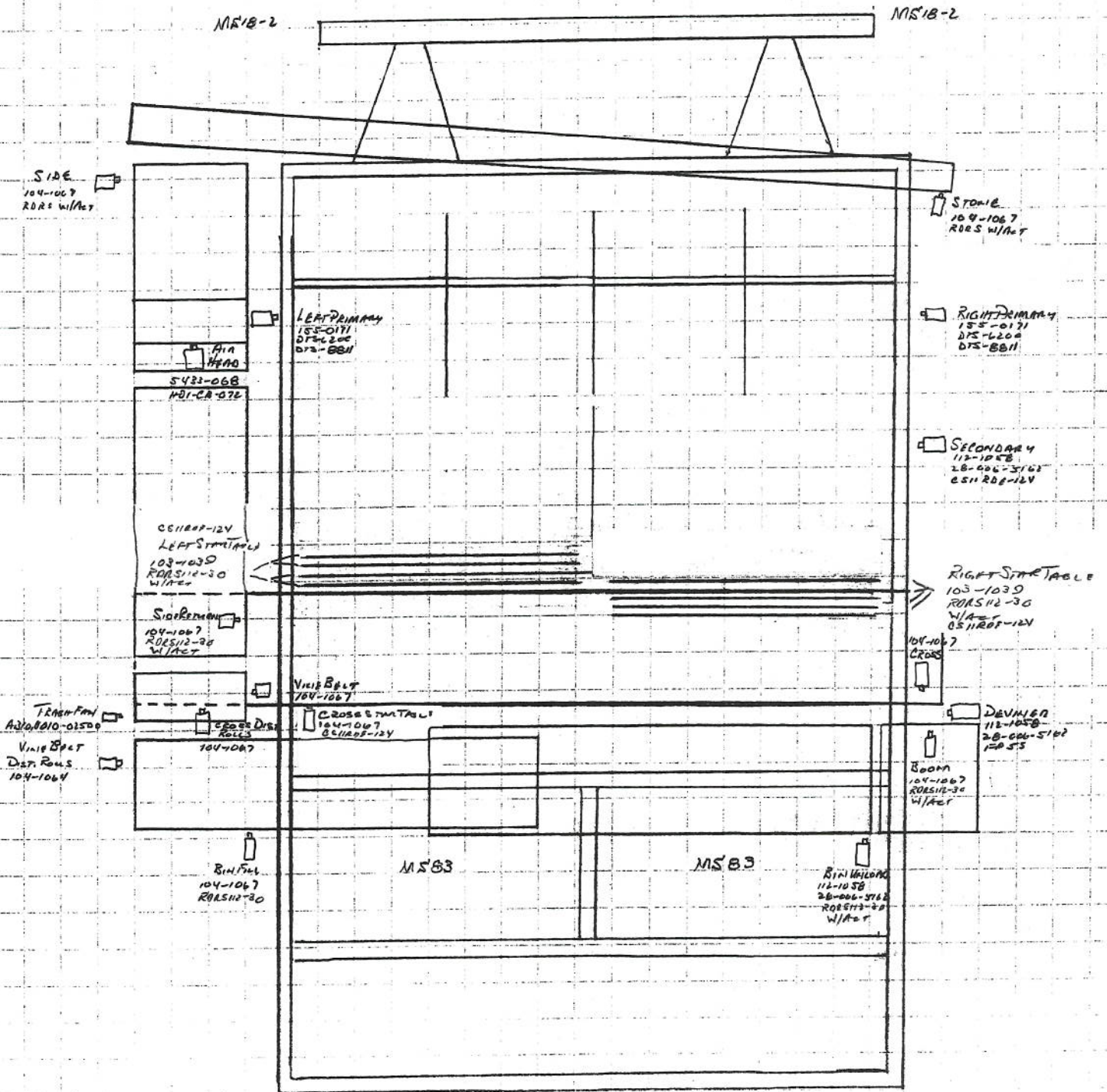
RIGHT START TABLE

BRAKE CHARGE PRESSURE



ENGINE QSX15 450 H.P.

6/30/10
 #10042
 PARAMOUNT FARMS
 4RS #6 SLAT



PARAMOUNT
2010

UPPER & LOWER
SHAKER (LEFT SIDE)

AIR
HEAD



AFE New Equipment Chain Verification Sheet

Chain For Big Iron Equip / Paramount #10042 4RSPH65LAH



AFE Part #	Description	Brand	Location
2003-00182	1/2x33x45mm 2x60 2DNPL-1STPL HT - 121+ (18') Clips Loose One End	Noffsinger	Primary (4)
2003-00183	7/16x68x42mm 3x60 STSRT - 108+ (16') Clips Loose One End	Broekema	Secondary 1st
2003-00184	7/16x68x42mm 3x60 STSRT - 122+ (18') Clips Loose One End	Broekema	Secondary 2nd
2003-00185	5/8x68x150mm 2x60 STSRT - 63+ (31') Clips Loose One End	Noffsinger	Deviner (2)
2003-00186	7/16x48x42mm 2x60 STSRT - 203+ (30') Clips Loose One End	Broekema	Rear Cross
2003-00199	7/16x65x42mm 3x60 STSRT - 363+ (50') Clips Loose One End	Broekema	Lower Side
2003-00200	7/16x65x42mm 3x60 5STSRT-1STCushion Dome - 298+ (41') Clips Ls One End	Broekema	Upper Side
2003-00190	7/16x40x36mm 2x60 STSRT - + (39') Clips Loose One End	Noffsinger	Bin Fill Conv
2003-00189	7/16x40x36mm 2x60 STSRT - 229+ (27') Clips Loose One End	Noffsinger	Bulkloader
2003-00303	7/16x14x28mm 2x60 STPL 459+ Clips Loose One End ^{42.165 FT}	Noffsinger	Stone Conv



All clips to be bolted on.

LINK COUNT MAY NOT BE ACCURATE

Dealer Rep _____ Date _____

Customer _____ Date _____

HYDRAULICS FINISH MATERIALS LIST

BEGINNING DATE
END DATE

PROJECT NO. SERVICE KIT

QTY	PART NUMBER	DESCRIPTION
1	30003-004	RIVET CUTTER
2	40000-004	CHAIN BINDER
2	30020-019	BRAKE BOLTS
3	2015-014	LE-10
2	2015-000	3702123A
4	2015-010	9V210
1	2021-00700	H70K O-RING KIT
1	2021-00900	H90K O-RING KIT
1	2015-003	HP2610
1	2021-10600	600# GAUGE
1	2021-15000	5000# GAUGE
1	2021-10000	10,000# GAUGE
2	GP 6504-12-12-4	TEST TEE
1	6564-16-16-4	TEST TEE
1	GP 6504 08-08-04	TEST TEE
1	2403-16	842FS 16
4	GCP 04	DGA 20-1/4 NPT
4	TPO 04	TCM 20-3/16 UNEF
4	2021-16027	60257 SNUBBER
2	304-C-06	
2	304-C-08	
2	304-C-10	
2	304-C-12	
2	304-C-16	
2	2408-06	
2	2408-08	
2	2408-10	
2	2408-12	
2	2408-16	
2	6408-HHP-04	

