

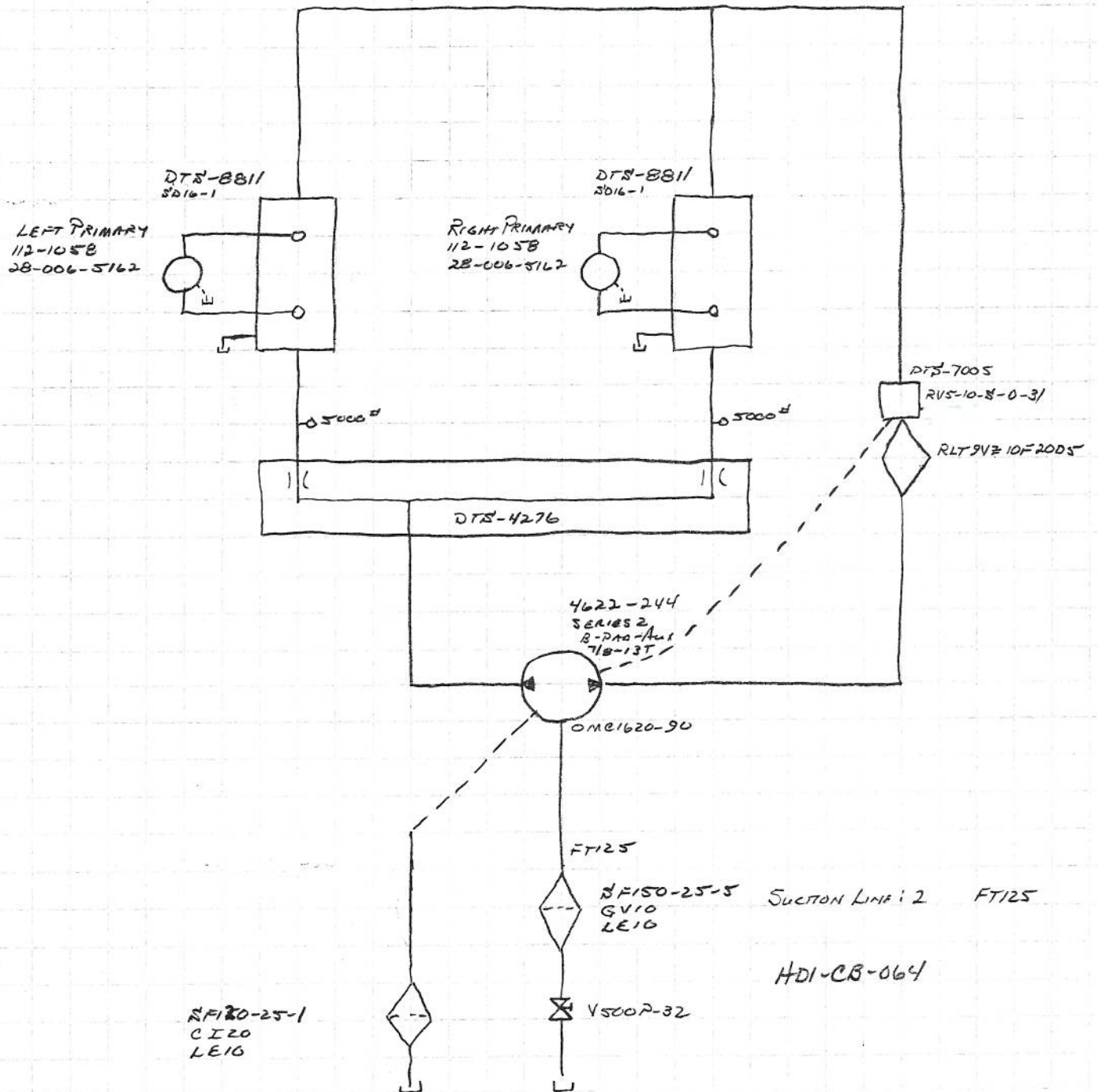
07018

Tupling Farms

6RPTW

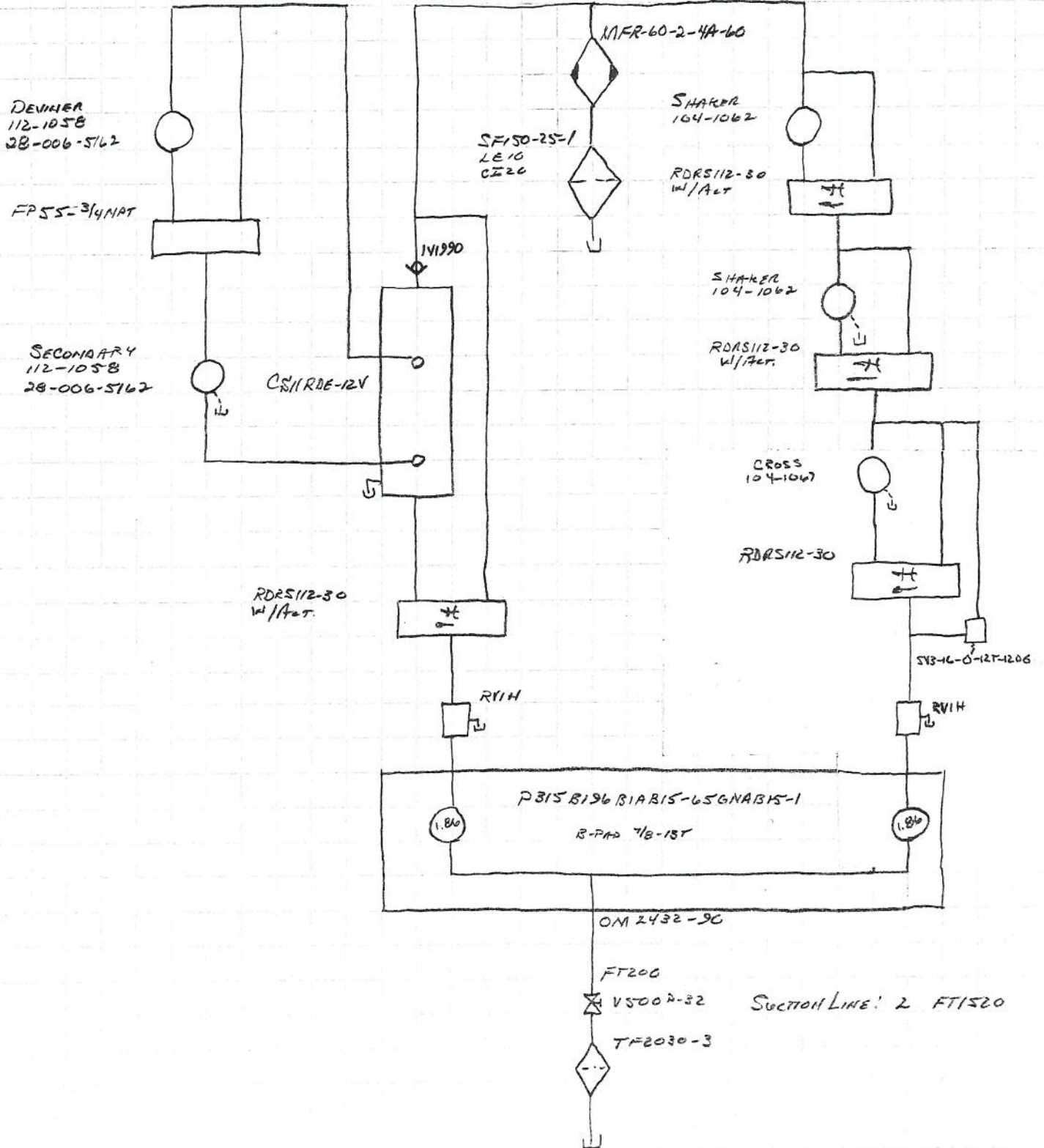
PULL TYPE WINDROWER

3/30/07
#07018
TUALING FARMS
6RATW1



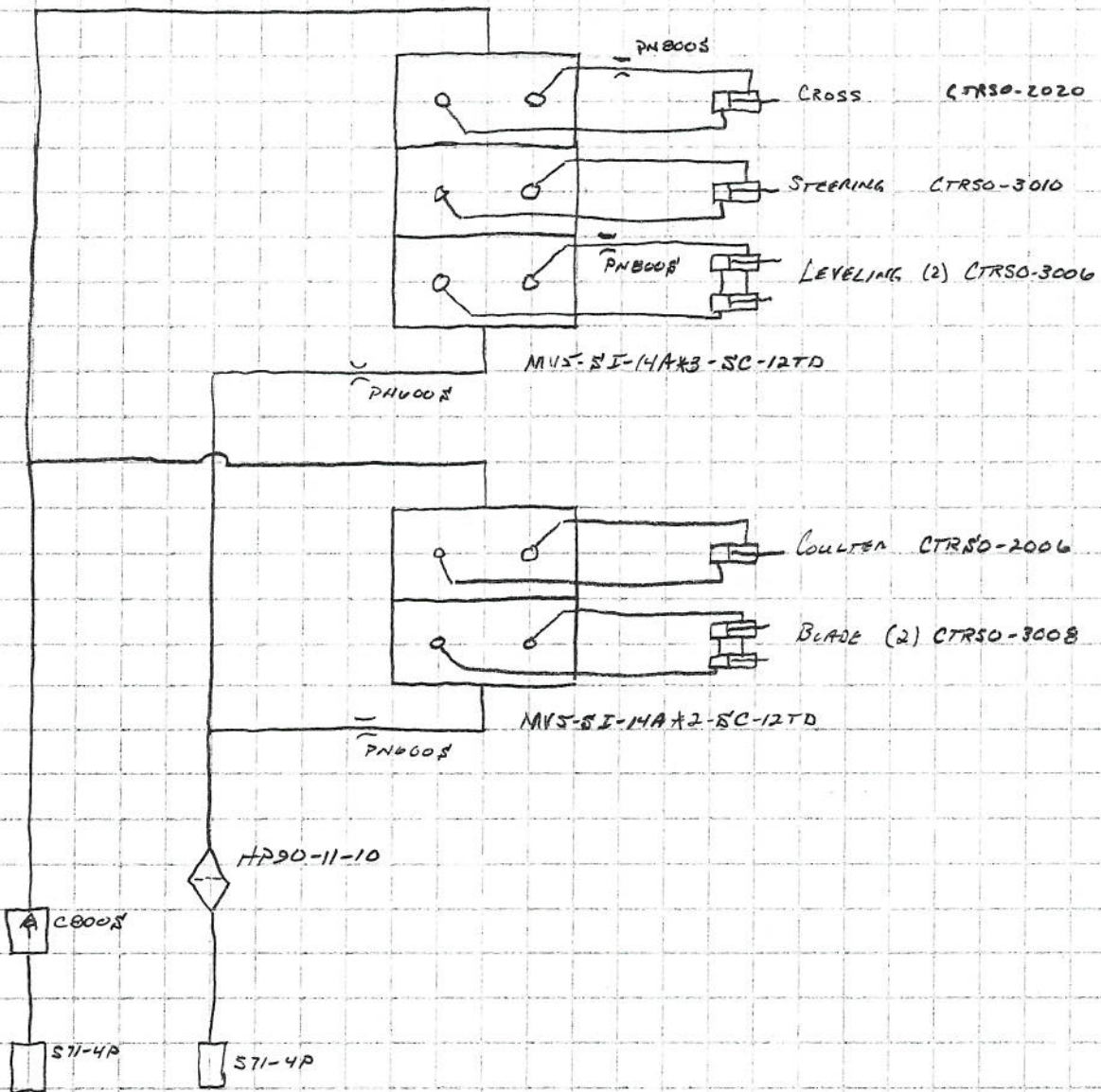
PULL TYPE WINDROWER

3/22/07
#07018
TURNING
GRATW



3/27/07
#07018
TUPLING
BRATKI

PULLTYPE WINDROWER



07018

TUPLING FARMS

3/29/2007

6RPTW

PLUG #1

PIN

1	RED	2	COULTER MV5 VALVE
2	BLUE	3	LEVELING MV5 VALVE
3	ORANGE	4	SECONDARY RDRS112-30 ACTUATOR
4	YELLOW	5	FLASHERS
5	BROWN	6	SECONDARY REVERSING VALVE
6	RED	7	COULTER MV5 VALVE
7	BLUE	8	LEVELING MV5 VALVE
8	ORANGE	9	SECONDARY RDRS112-30 ACTUATOR
9	BLUE	13	LEFT SHAKER RDRS112-30 ACTUATOR
10	ORANGE	14	LEFT PRIMARY REVERSING - FORWARD
11	BLACK	17	STEERING MV5 VALVE
12	RED	18	BLADE MV5 VALVE
13	ORANGE	19	LEFT PRIMARY REVERSING - REVERSE
14	BROWN	21	CROSS CONVEYOR SWITCH TO SV3-16 SOLENOID
15	BLACK	22	STEERING MV5 VALVE
16	RED	23	BLADE MV5 VALVE
17	BLUE	24	LEFT SHAKER RDRS112-30 ACTUATOR
18	WHITE	28	CROSS CONVEYOR MV5 VALVE
19	BLUE	29	CROSS CONVEYOR MV5 VALVE
20	ORANGE	30	RIGHT PRIMARY REVERSING - FORWARD
21	GREEN	31	RIGHT PRIMARY REVERSING - REVERSE
22	RED	32	RIGHT SHAKER RDRS112-30 ACTUATOR
23	YELLOW	33	RIGHT SHAKER RDRS112-30 ACTUATOR
24			
25			
26			
27			
28			
29	BELDEN	8762	CLEAR TO PIN "C" COIL #2 - GREEN FROM KAR-TECH CONTROLLER
30	BELDEN	8762	BLACK TO PIN "D" COIL #2 TO PANEL GROUND
31			
32			
33			
34			
35			
36			
37			

3 - PIN PLUG

PIN #	1	RED	+ 12VDC POWER SUPPLY	
	2	BLACK	- GROUND	
	3			
PIN #	1	RED	+ 12VDC POWER TO COOLER FANS	10 AWG
	2	BLACK	- PANEL GROUND TO FRAME GROUND	10 AWG
	3			