

McGraw 1047/11548

ERRPTM

RETURN

SIDE  
 4x3 Bush  
 FT 2030  
 2" CLS NIP  
 2" BALL VALVE  
 FT 200

---

TE 2540-3  
 2 1/2" CLS MIDDLE  
 2 BUL-20-40 B  
 FT 250

TOP FRONT  
 1 1/4 x 1 1/2 Bush BK 32024  
 1 1/4 90° BK 420  
 5" NIP  
 1 1/4 F.H.  
 1 x 1 1/4 Bush BK 31620  
 848 FS 12x16  
 2404-12-16

RETURN

TOP BACK  
 2" x 1 1/2 Bush BK 32432  
 1 1/2 90° BK 424  
 5" NIP  
 1 1/2 F.H.  
 1 1/2 90° BK 424  
 FT 150

Bottom  
 2" 90°  
 2" CLS NIP  
 2" BALL VALVE  
 2" x 1 1/2 Bush  
 1 1/2 NIP  
 1 1/2 FILTER HEAD  
~~1 1/4 x 1 1/2 Bush~~  
 FT 150  
 1 1/2 90°



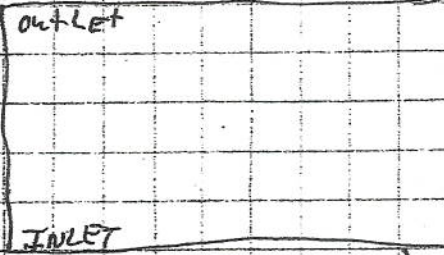
10/21/09  
#09035

T A FARMS LTD  
L R A T W

PULL TYPE W/INCREASER

COOLER

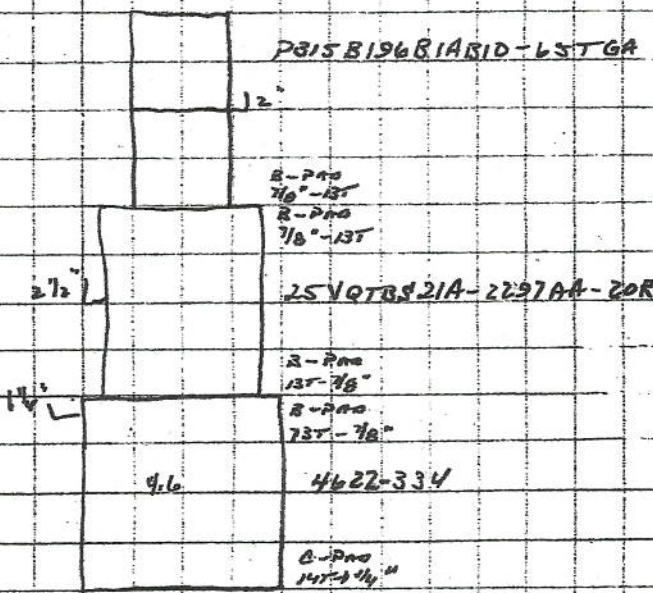
- 1- 3269-24-24
- 1- 1 1/2 45° STL
- 1- FT 150



CANTIN

- 1- STD 24-20
- 1- 6602-16
- 2- 2406-16-12

- 1- 3269-24-24 (6405-24-24)
- 2- 1 1/2 45° STL
- 3- 1 1/2 TEE
- 3- 1 1/2 CLS NIP
- 3- 1 1/2 24 BUSH - HYDRAULIC (245B 24-16)
- 3- 848 FS 12x16

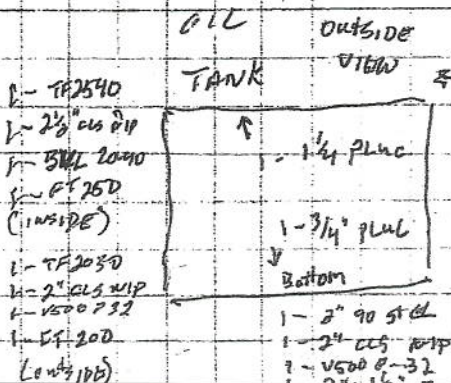


OIL TANK  
BACK VIEW

HDI-CB-064

COOLER  
RET

HYDRO  
FLUSH



CAP  
1- 3/4 x 7" BELL

- 1- 1 1/2 2 BUSH
- 1- 1 1/2 90° STL
- 1- 1 1/2 x 5 NIP
- 1- SF 150
- 1- 1 1/2 90° STL
- 1- FT 150

- 1- 1 1/2 90° STL
- 1- 1 1/2 1 1/2 BUSH
- 1- 1 1/2 5 NIP
- 1- SF 150
- 1- 1 1/2 90° STL
- 1- 848 FS 12x16

1- BR 12

- 1- 1 1/2 45° NIP
- 1- SF 150
- 1- 1 1/2 x 1 1/4 BUSH

