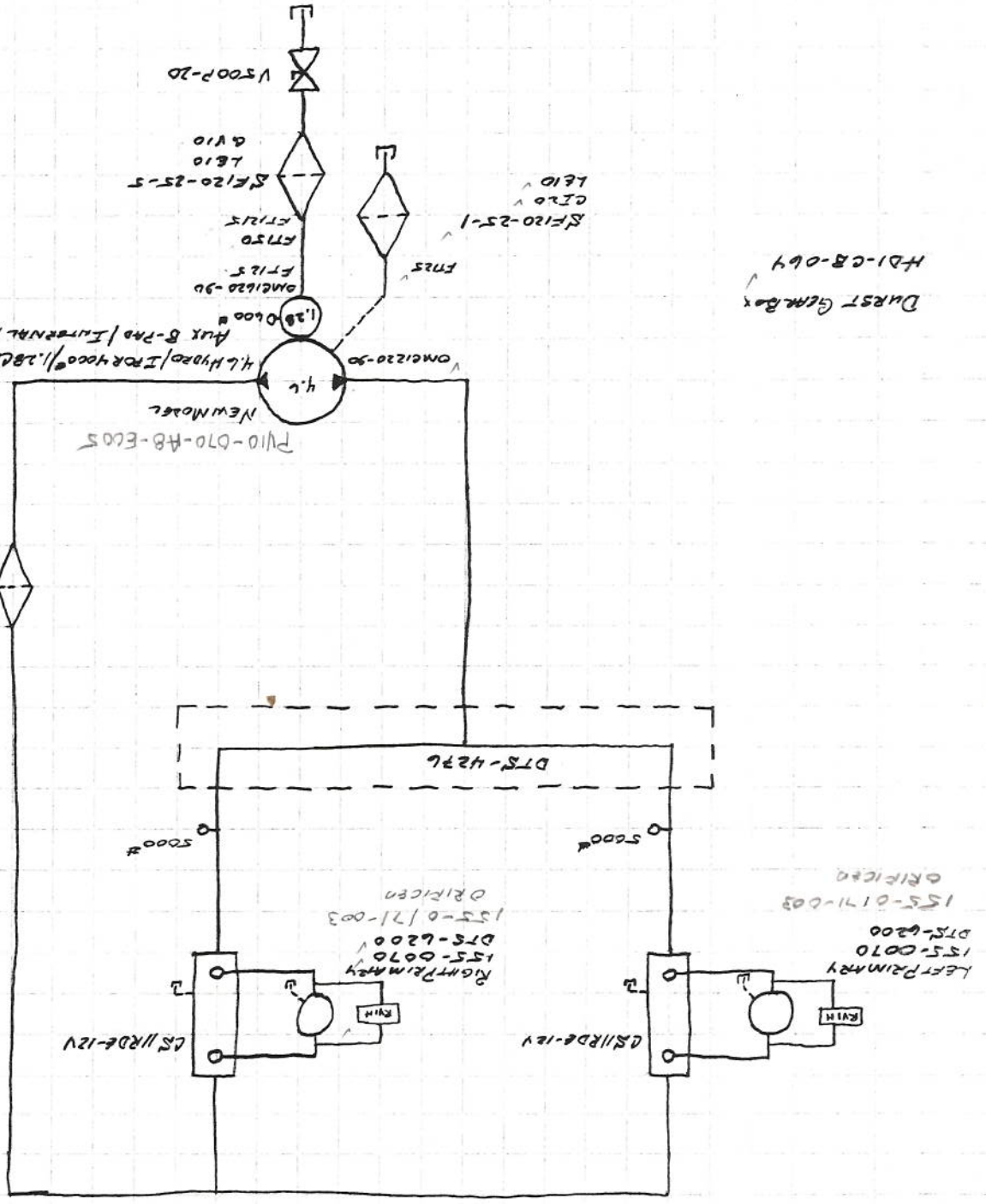


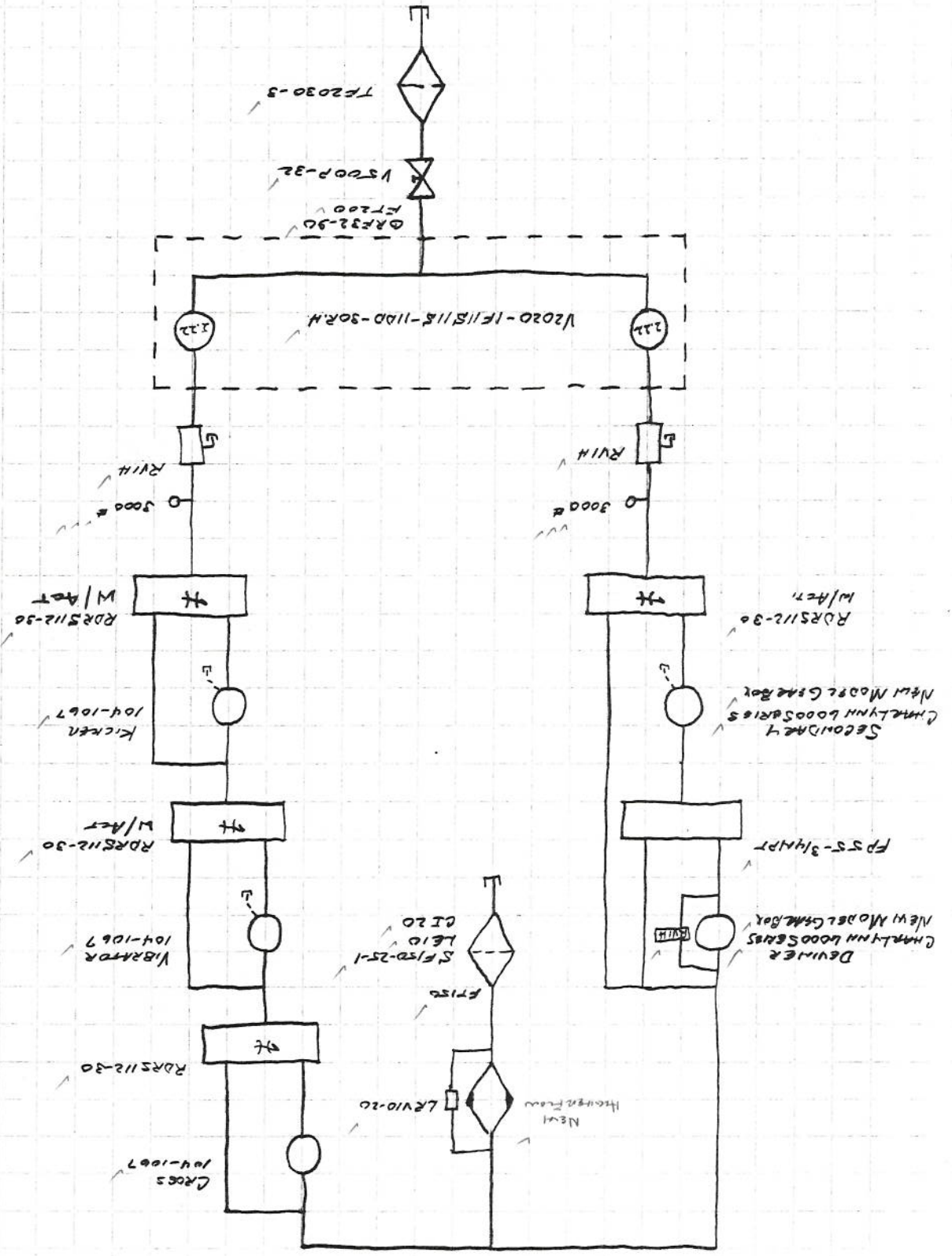
1/20/02
 6RPTW
 #02207
 SUMMIT Fkms

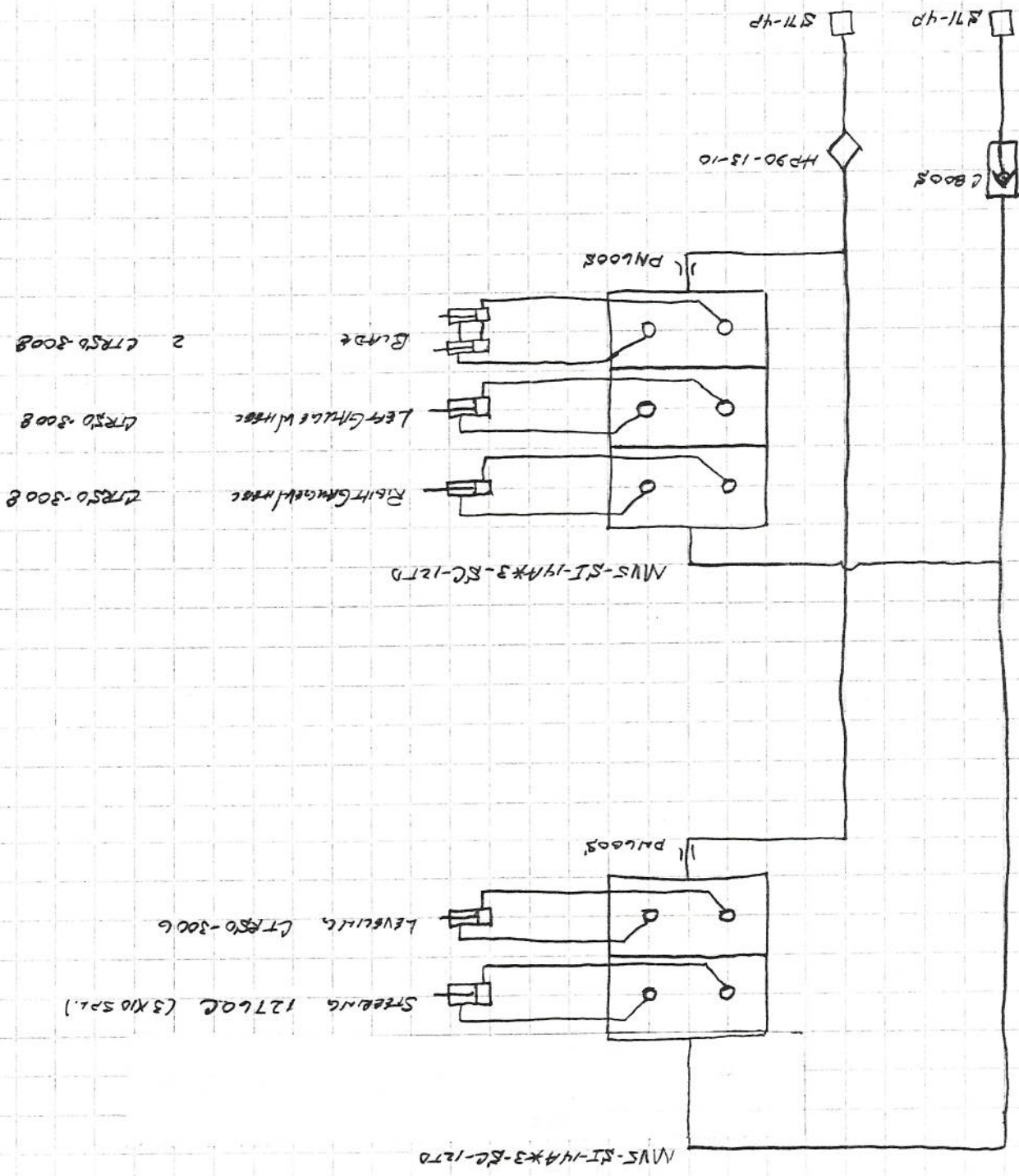
6RPTW
 H₂O Hydro-PRIMARY Circuit



11/20/02
 G.R.P.T.W.
 60207
 SUMMIT FRMS

G.R.P.T.W.
 SECONDARY - GROSS CIRCUITS





2002 - 6RPR/1
Valve Solenoid Circuit

SUMMIT FIRMS
#02207

5/28/02
Revision #1
Cross City
Deerton
6RPR/1

2002 PTW - Hydraulic Di. Table

SUMMIT FAMES

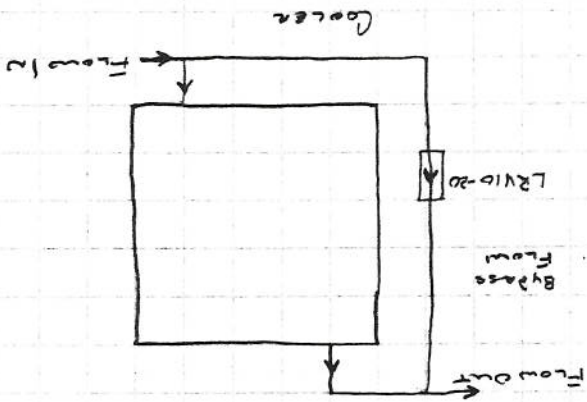
11/20/02
 6RPTW
 02207

③

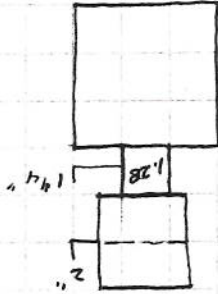
- TR2030-3
- 2" C.S. NIP
- V500P-32
- FT200
- * V2020

②

- 2" X 1 1/4" Bush
- 1 1/4" C.S. NIP
- V500P-20
- 1 1/4" C.S. NIP
- SF120-25-5
- FT1215
- * 4L Hydrol G.H.C.

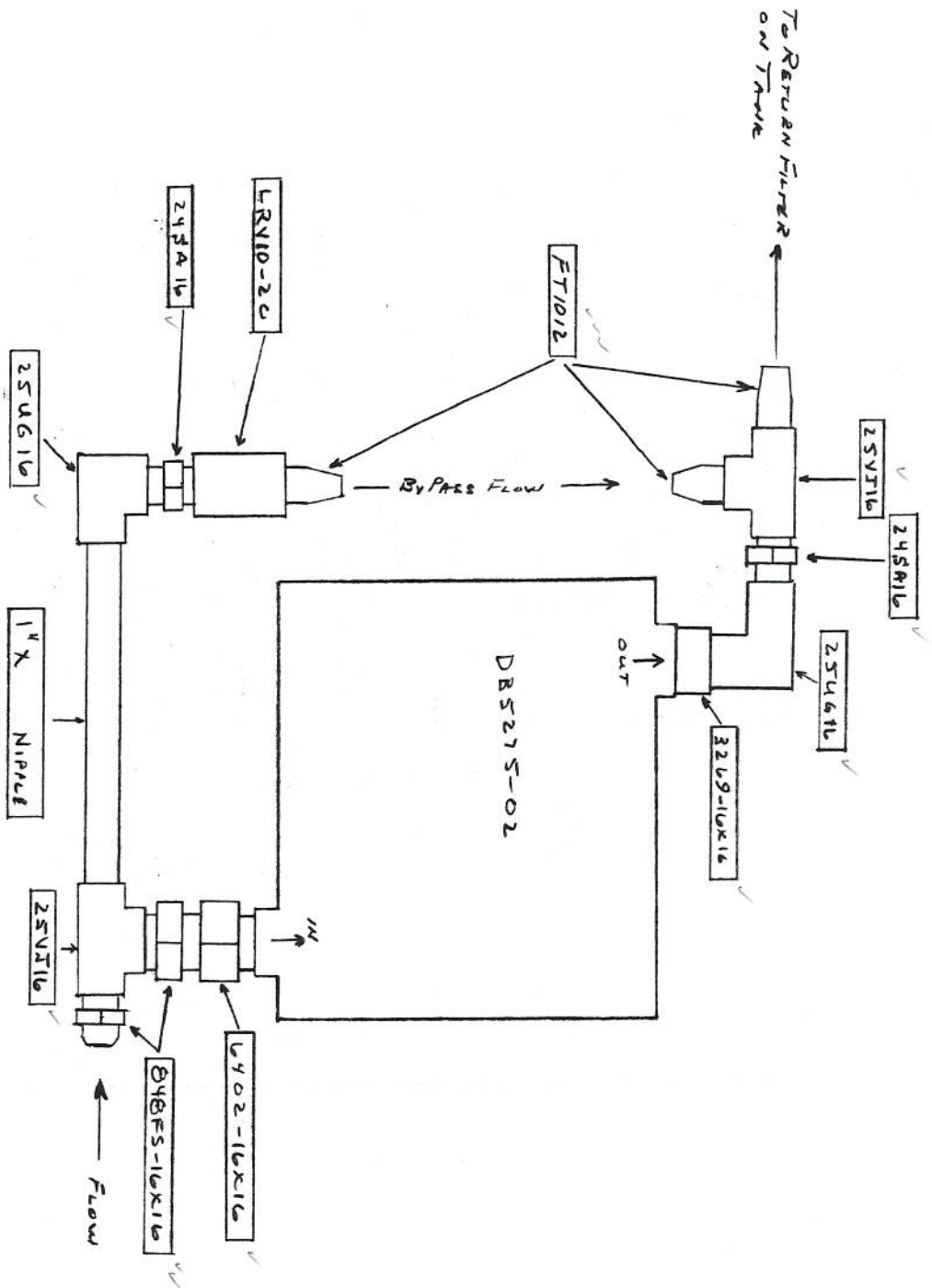


V2020-1F11S115-1/DD-30 R.H.



4L Hydrol/IPOR 4000²/1.28 GPM G.H.C. / C.W. / Elec. Contr. / 1 1/4" - 14T /
 AUX B-PAD / INTERNET H.O.S. /
 New Model

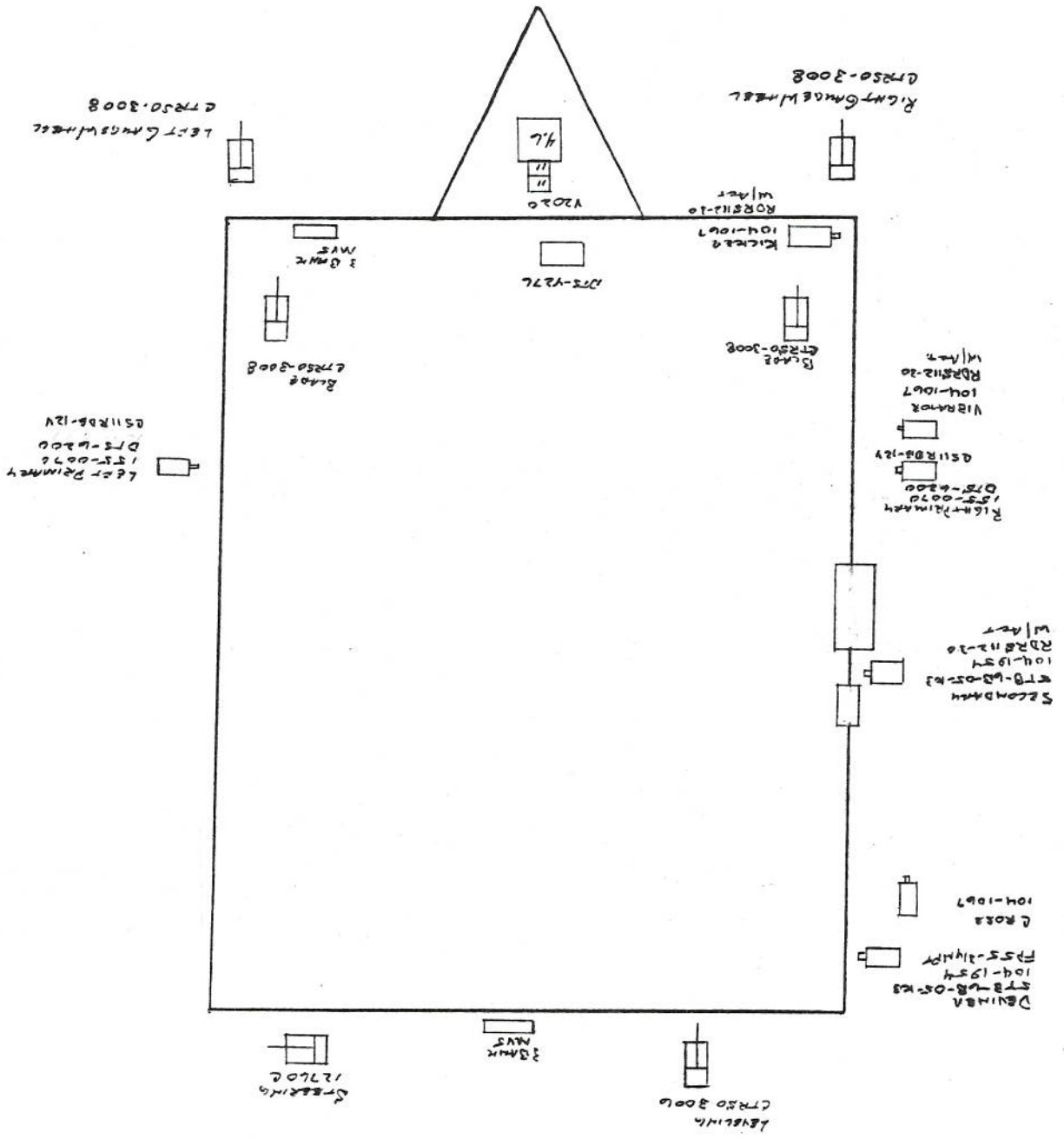
DUST GERM BOX
 1401-08-064

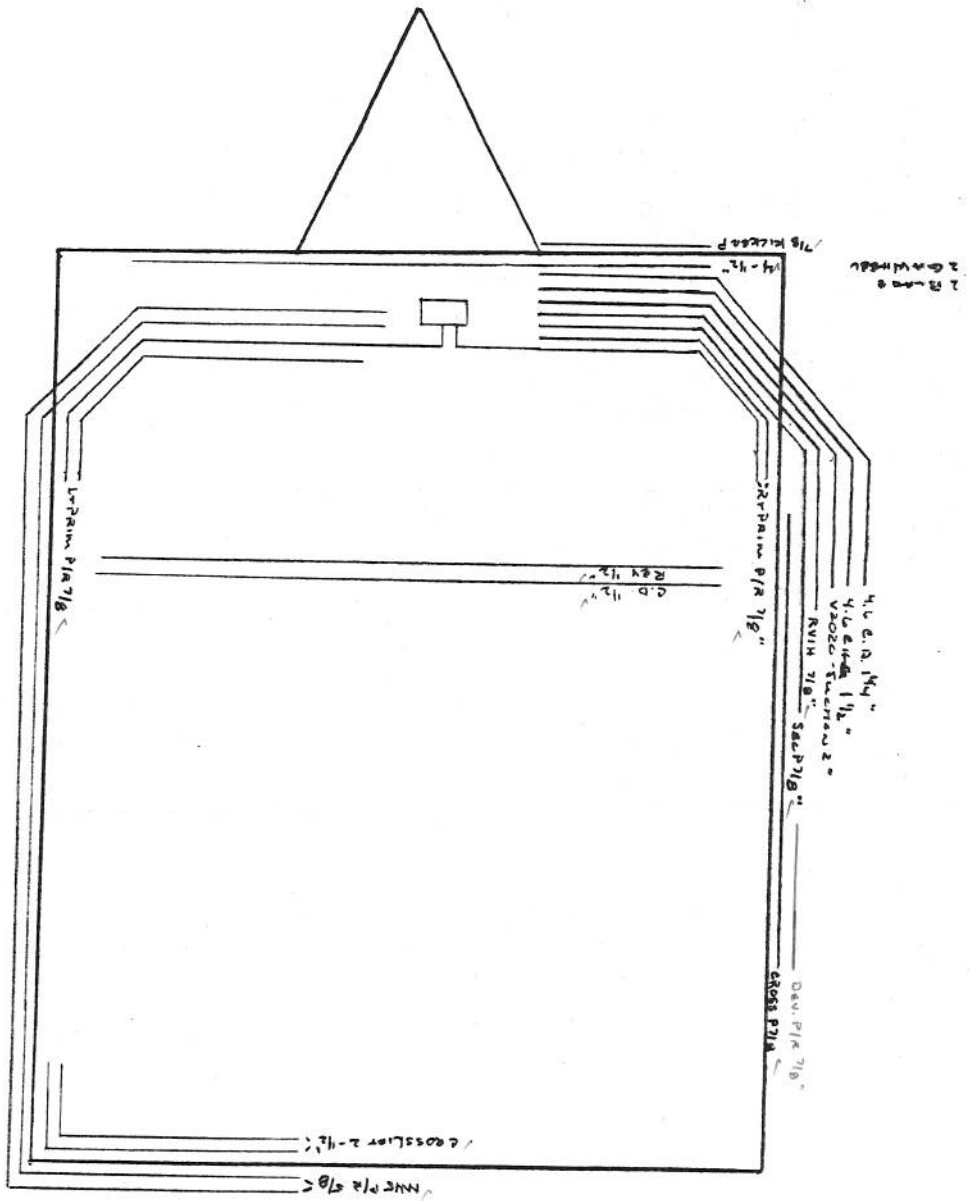


2002 Pull Winch Review Cooler Hydraulic Pumping

2002

Pull Downover Frame
LEFT HAND DISCHARGE





2002
 Pull Window Frame
 LEFT HAND DISCHARGE