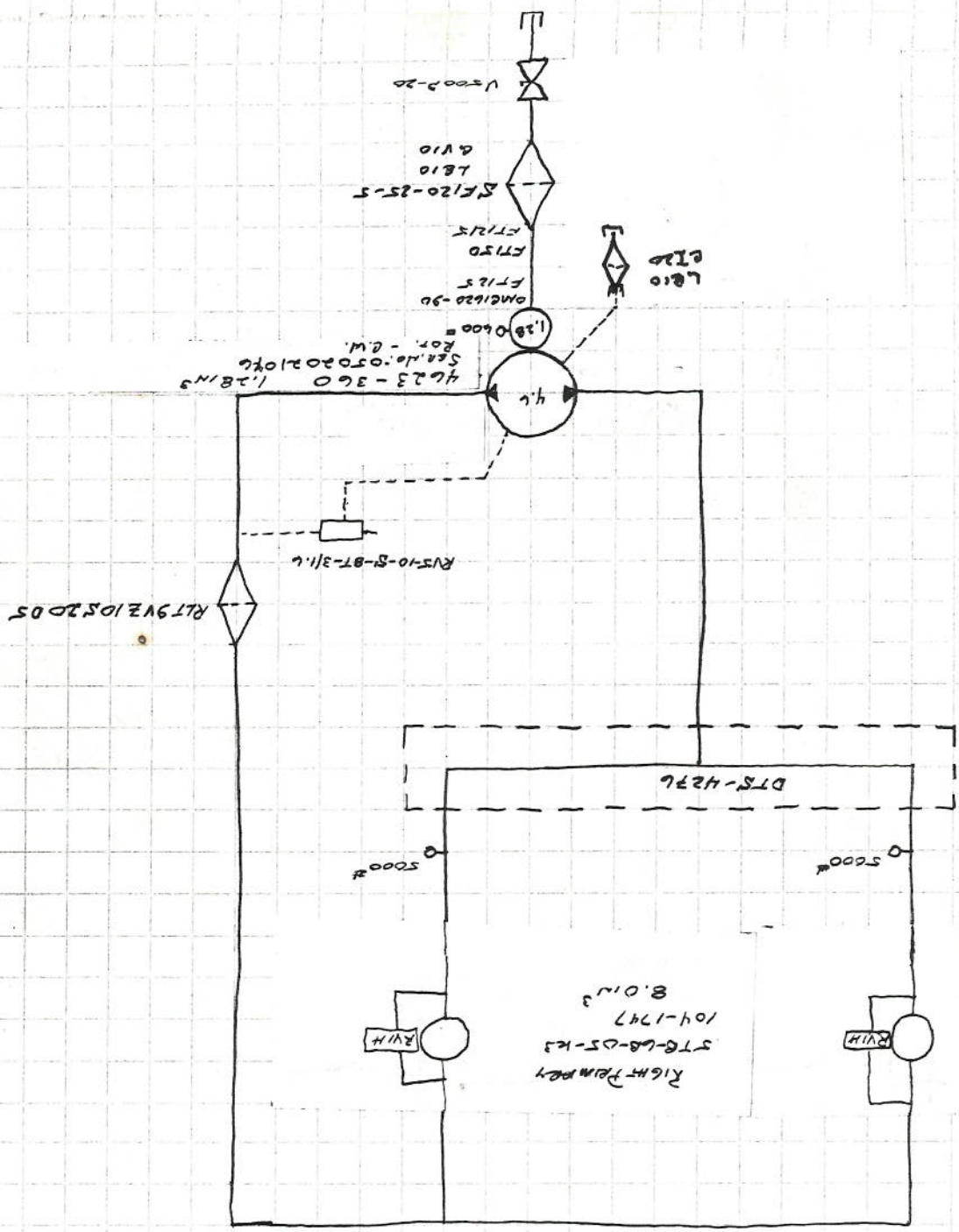


Worley

#040001

4987W

DURST Gear Box
HDI-C8-064



LEFT PUMP
STB-6A-05-K3
104-1747
8.0 IN³

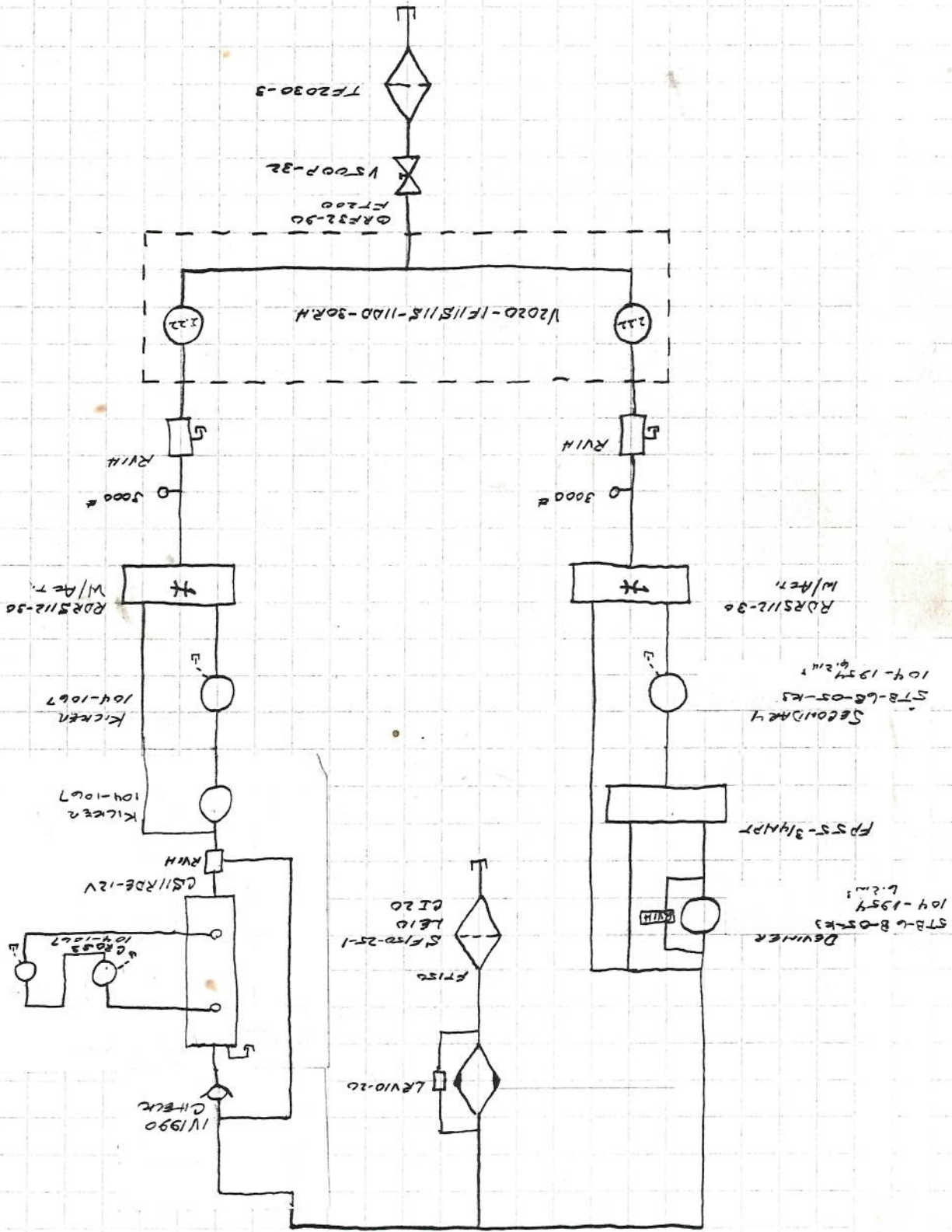
RIGHT PUMP
STB-6A-05-K3
104-1747
8.0 IN³

2/5/64
#04221
Klostermann
4PRTV1

Full Type Winrower
H6 Hydro-Primary Circuit

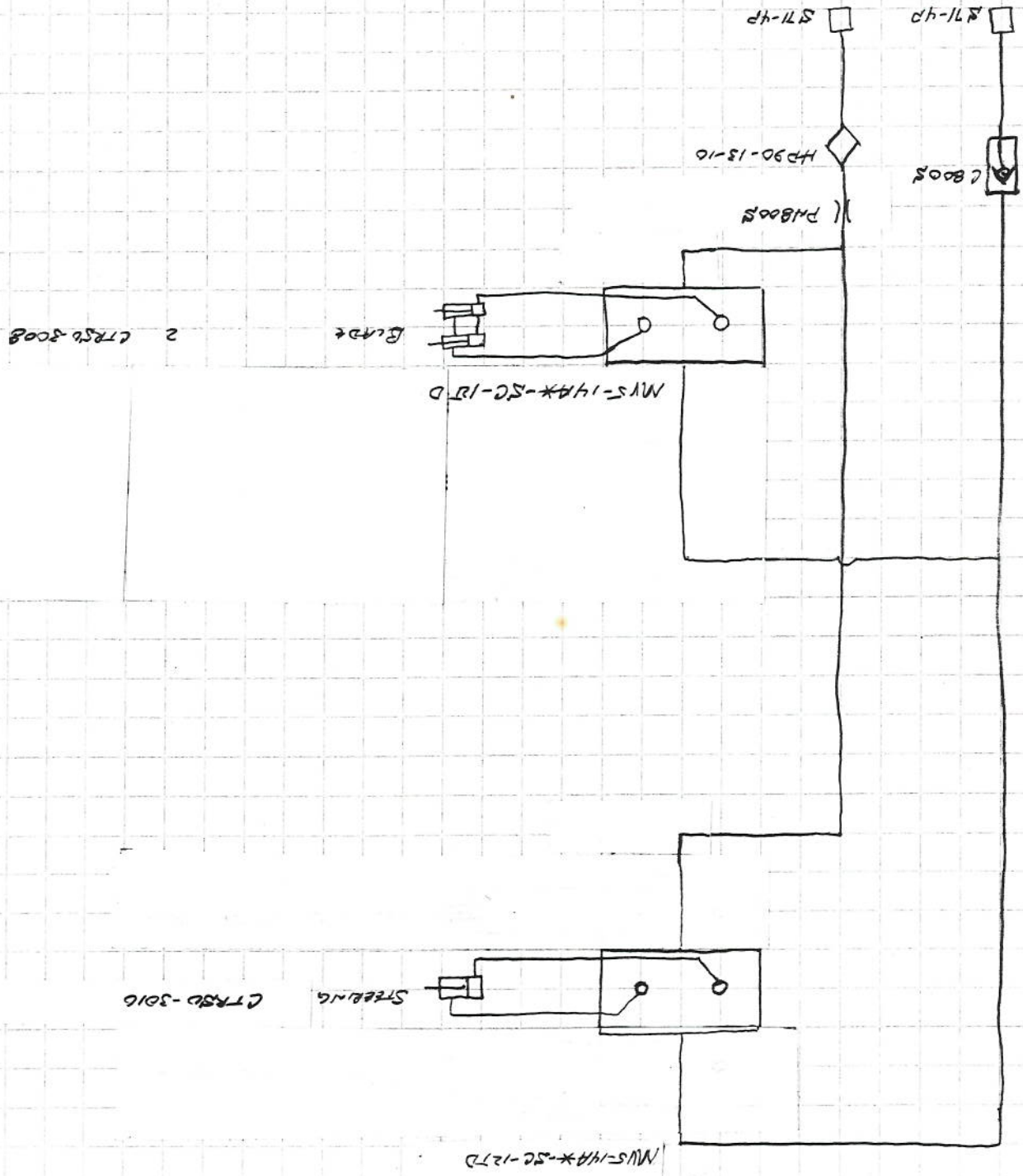
2/5/04
 #04221
 Water Seed Train
 HPTVH

PULL TYPE WINDROWER
 Secondary - Gross Circuits



2/3/04
 #4221
 WOLLEY SEED FIRM
 4 PPT/1

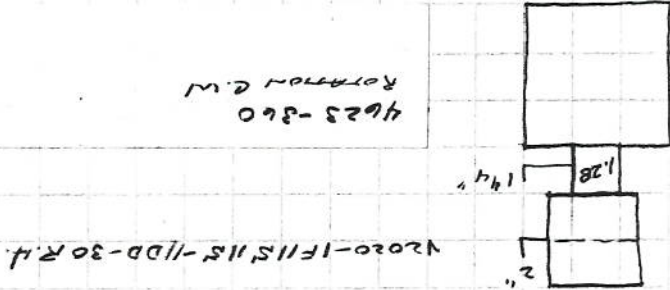
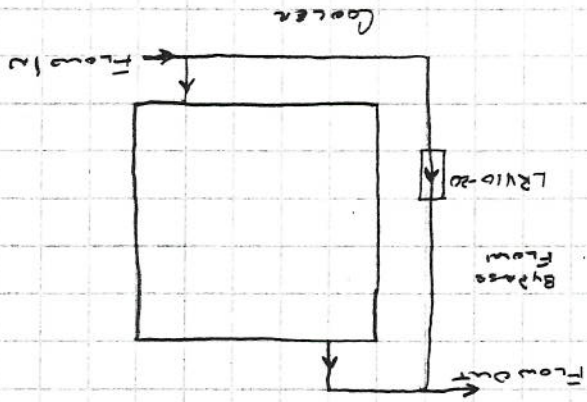
Pull Type Winch
 Valve BME Circuit



9/2/03
 #0321
 WALTER SYSTEM
 4RPTM

Pull Type Windover
 - Hydraulic Oil Tank

- (3)
- TP2030-3
 2" C/S NIP
- V500P-32
 FT200
- * V2020
- 2" X 1 1/4" Bush
- 1 1/4" C/S NIP
- V500P-20
- 1 1/4" C/S NIP
- SF120-25-5
- FT1215
- * 4L Hydro Oil



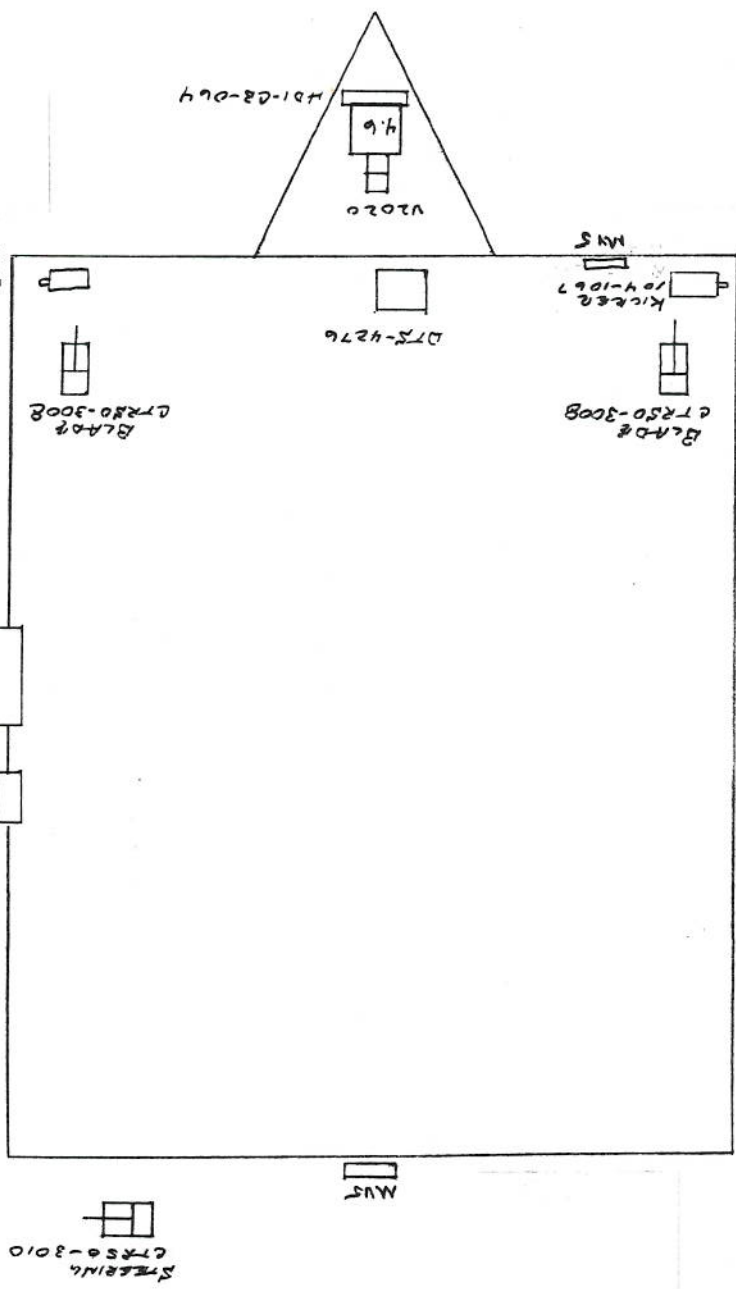
V2020-1F115115-11DD-30 R.H.

4623-360
 ROTATION C.W.

DUST GEAR BOX
 1401-CR-064

2/5/04
 #04221
 HURLEY SEED FARM
 HPTW

PULL WINDROWER FRAME
 RIGHT HAND DISCHARGE



KICKER
 RDBS112-30
 104-1067
 w/MT

KICKER
 104-1067

BLADE
 CRS-3008

BLADE
 CRS-3008

DT-4276

LEFT PRIMARY
 STB-68-05-K3
 104-1747

RIGHT PRIMARY
 STB-68-05-K3
 104-1747

SECONARY
 STB-68-05-K3
 104-1954
 RDBS112-30 w/MT
 HYDRAULIC DILTRAK

COOLER
 DB5225-02

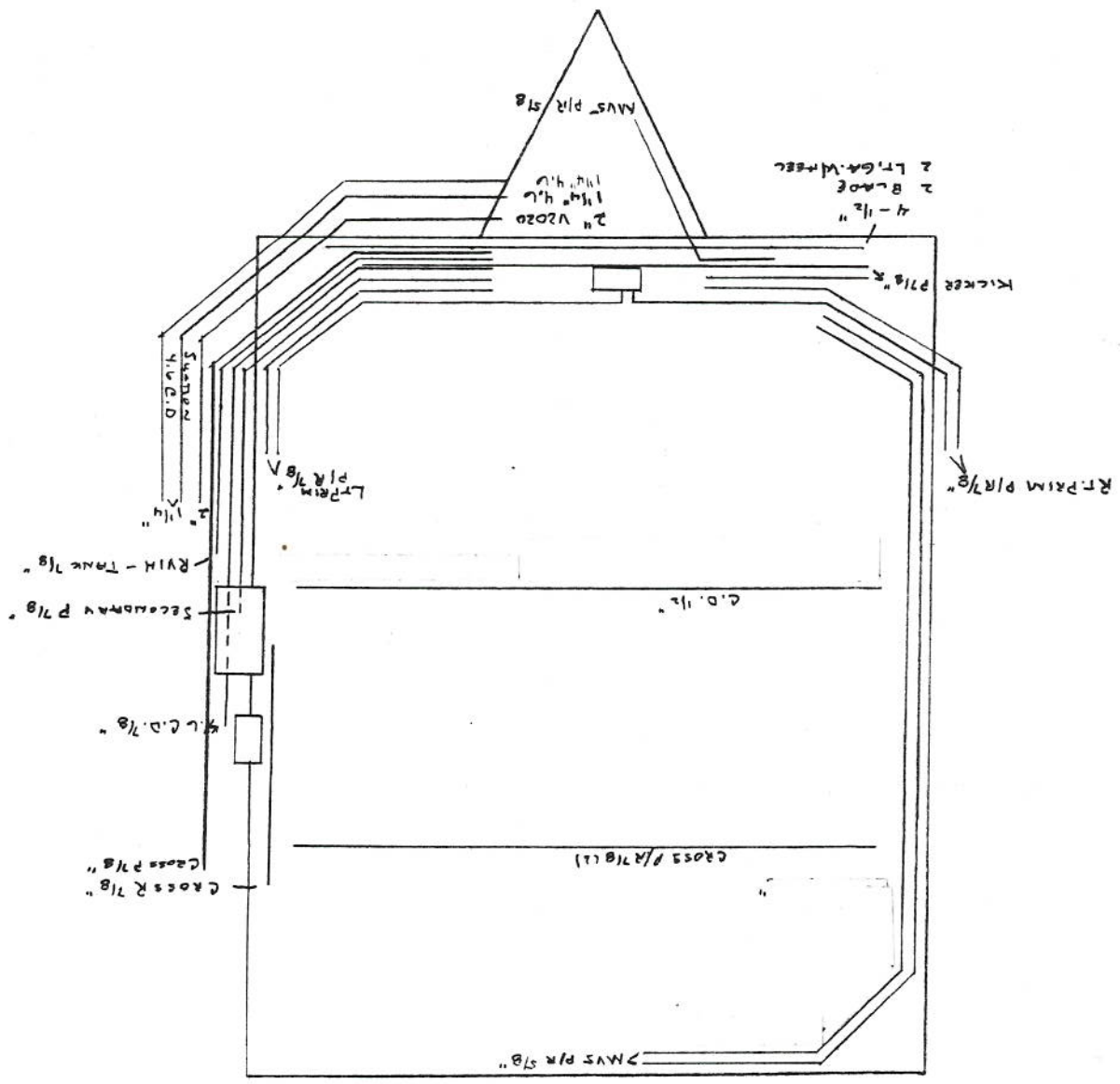
DEVIER
 STB-68-05-K3
 104-1954
 FPS-314 NPT
 CROSS
 104-1067
 GS11RDB-12V

CROSS
 104-1067

STEERING
 CRS-3010

MVS

H01-08-064
 4.6
 V2020



FULL WINDROWER FRAME
 RIGHT HAND DISCHARGE

2/5/04
 604221
 WORLEY SEED FARM
 4RPTV