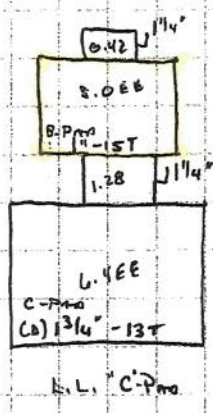
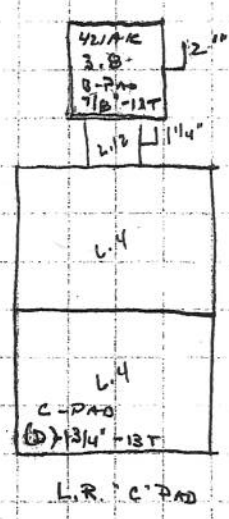


- ④
TF2540-3
2 1/2" 90° STEEL
2 1/2" CLS NIP
2BNL20-408
FT250
* 35VQTRBS
- ③
3" X 2" BUSH
2" CLS NIP
V500P-32
FT200
DIRT 32-90
FF200
2" 90° STEEL
W43-32PK
20F2215-25-5
WV3-32PK
2" 90° STEEL
2" CLS NIP
V500P-32
2" CLS NIP
2" TEE HO
2" X 1 1/4" BUSH
X FT125
* T. 1/4" X 1/4"
* L. 4 EE

- ③
TF2030-3
2" 90° STEEL
2" CLS NIP
V500P-32
FT208
* 421AK
- ③
TF2030-3
2" 90° STEEL
2" CLS NIP
V500P-32
2" TEE HO
X 2" X 1 1/2" BUSH
FT150
* TRIPLE COMAN
O 2" X 1 1/2" BUSH
FT150
* TRIPLE COMAN

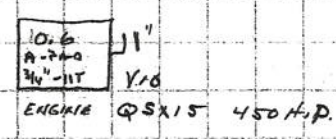
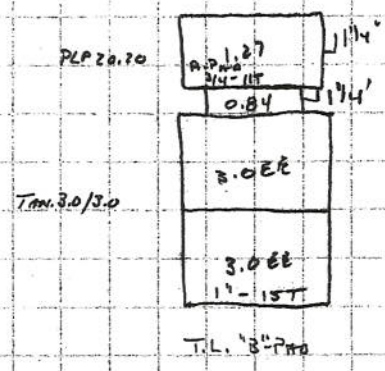
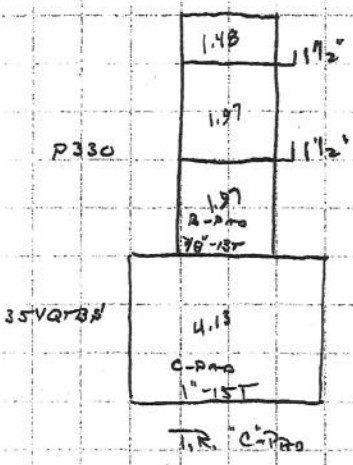
- ③
TF2030-3
2" 90° STEEL
2" CLS NIP
V500P-32
2" CLS NIP
2" TEE HO
X 2" X 1 1/4" BUSH
FT125
* PLP20.20
O 2" 90° STEEL
2" X 1" BUSH
FT100
* VID

- ④
4" X 2" BUSH
2" 90° STEEL
2" CLS NIP
V500P-32
2" X 1 1/4" BUSH
1 1/2" CLS NIP
2FISD-25-5
1 1/2" CLS NIP
2" X 1 1/2" BUSH
V500P-32
2" CLS NIP
2" TEE HO
FT125
* TANDEM 3.0EE
O 2" 90° STEEL
2" X 1" BUSH
FT100
* SINGLE 3.0EE



- L.R. TANDEM L.4
421AK
L.L. L.4 EE
3.0EE
T.R. 35VQTRBS
TRIPLE COMAN
T.L. TANDEM 3.0
PLP20.20
ENGINE VID

- GROUND DRIVE
STEERING CIRCUIT
AIR HEAV
SECONDARY
CROSS
SIDE
BIN FILL
BIN UNLOAD
LEFT START TABLE
LEFT PRIMARY
RIGHT PRIMARY
RIGHT START TABLE
BRIDGE CHANGE PRESSURE
FUELING



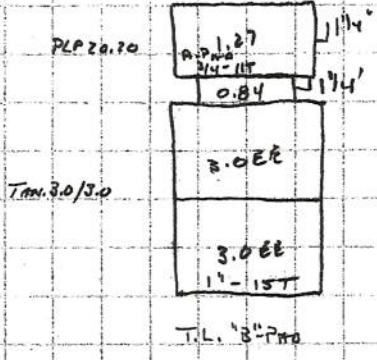
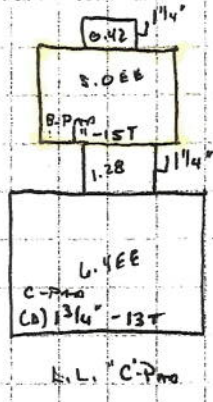
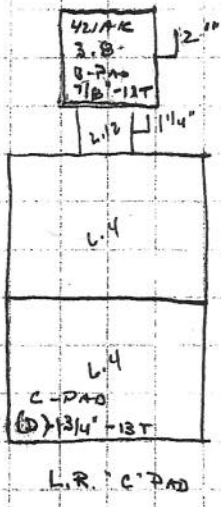
DURST D13397 4PAD-120E-NI-300A-CEN-CFA-CEN-45
DRIVE PLATE - TORSION CONTROL 19310

- ④
 TF2540-3
 2 1/2" 90° STEEL
 2 1/2" CLS NIP
 2BNL20-408
 FT250
 * 35VQTRBS
- ③
 3" X 2" BUSH
 2" CLS NIP
 V500P-32
 FT200
 ORF 32-90
 FF200
 2" 90° STEEL
 W43-32PK
 20F2215-25-5
 W43-32PK
 2" 90° STEEL
 2" CLS NIP
 V500P-32
 2" CLS NIP
 2" TEE HO
 2" X 1 1/4" BUSH
 X FT125
 * T 1/4" X 1/4" * L.Y.EE

- ③
 TF2030-3
 2" 90° STEEL
 2" CLS NIP
 V500P-32
 2" 90° STEEL
 FT200
 * 421AK
- ③
 TF2030-3
 2" 90° STEEL
 2" CLS NIP
 V500P-32
 2" TEE HO
 X 2" X 1 1/2" BUSH
 FT150
 * TRIPLE COMAN
 2" 90° STEEL
 O 2" X 1 1/2" BUSH
 FT150
 * TRIPLE COMAN

- ③
 TF2030-3
 2" 90° STEEL
 2" CLS NIP
 V500P-32
 2" CLS NIP
 2" TEE HO
 X 2" X 1 1/4" BUSH
 FT125
 * PLP20.20
 O 2" 90° STEEL
 2" X 1" BUSH
 FT100
 * VID

- ④
 4" X 2" BUSH
 2" 90° STEEL
 2" CLS NIP
 V500P-32
 2" X 1 1/2" BUSH
 1 1/2" CLS NIP
 2" FISO-25-5
 1 1/2" CLS NIP
 2" X 1 1/2" BUSH
 V500P-32
 2" CLS NIP
 2" TEE HO
 FT125
 * TANDEM 3.0EE
 O 2" 90° STEEL
 2" X 1" BUSH
 FT100
 * SINGLE 3.0EE



- L.R. TANDEM L.Y
 421AK
 L.L. L.YEE
 3.0EE
 T.R. 35VQTRBS
 TRIPLE COMAN
 T.L. TANDEM 3.0
 PLP20.20
 ENGINE VID

- GROUNDRIVE
 STEERING CIRCUIT
 AIR HEAV
 SECONDARY
 CROSS
 SIDE
 BIN FILL
 BIN UNLOAD
 LEFT START TABLE
 LEFT PRIMARY
 RIGHT PRIMARY
 RIGHT START TABLE
 BRIDGE CHANGE PRESSURE
 FUELING

P330
 35VQTRBS

DURST D13397 4P09-120E-NI-300A-CEN-CRA-CRA-145
 DRIVE PLATE - TORSION CONTROL 19310

10.6
 A-PAD
 7/8-13T
 Y10
 ENGINE Q SX15 450 H.P.