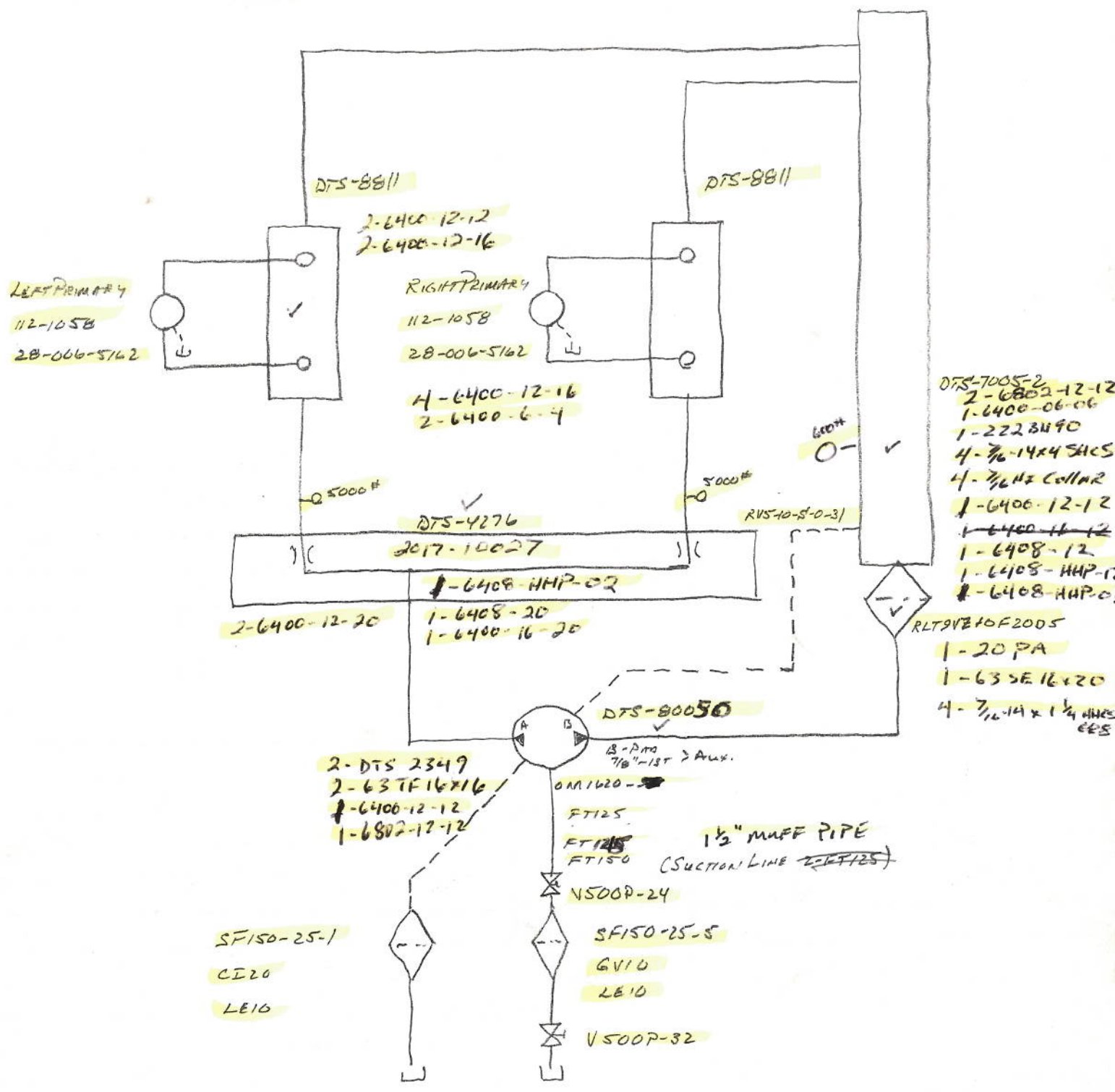


12058

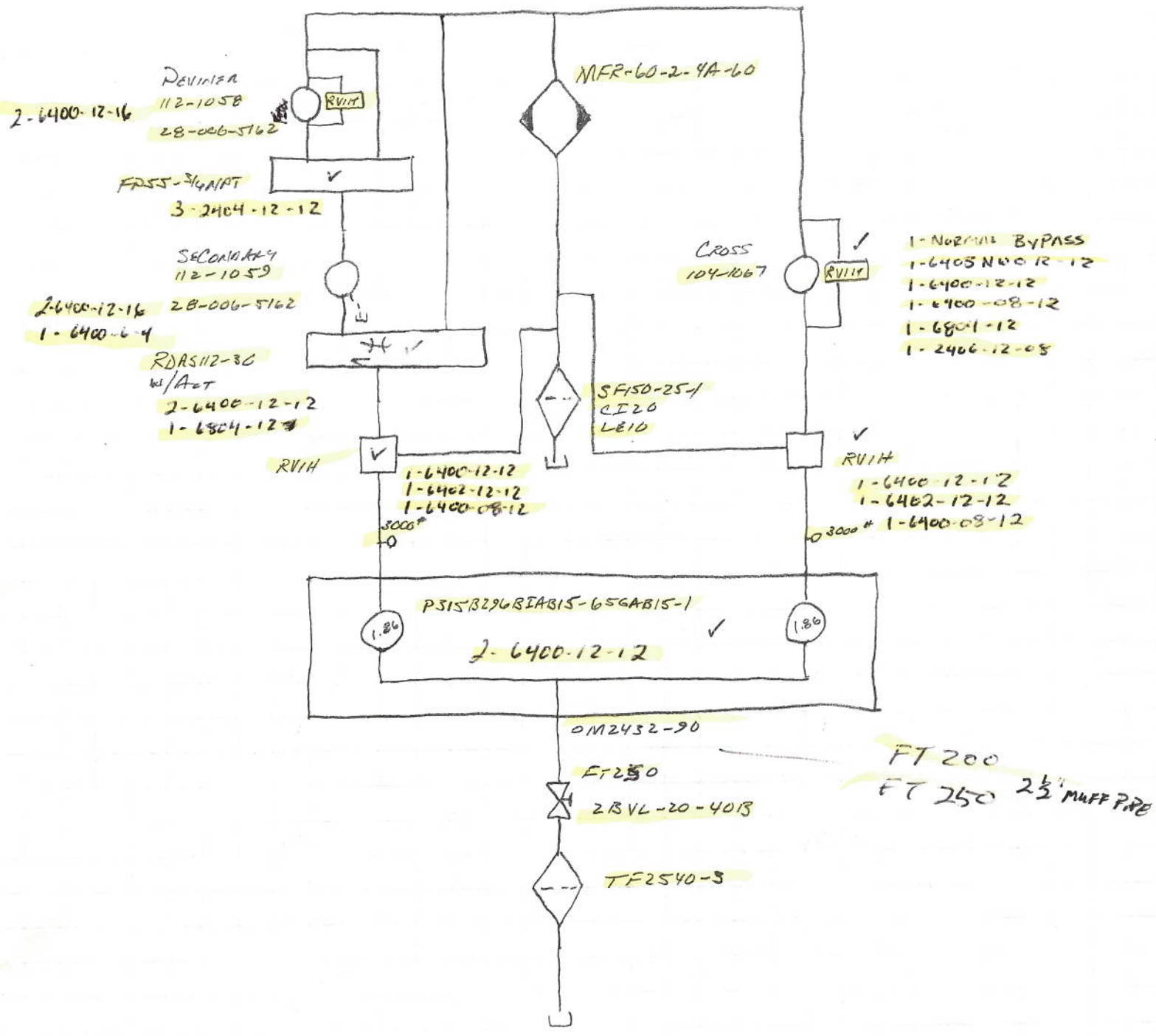
Worley seed

6 RPTW

2/23/12  
 #12058  
 WORLEY SEED  
 GRATW (R.H)



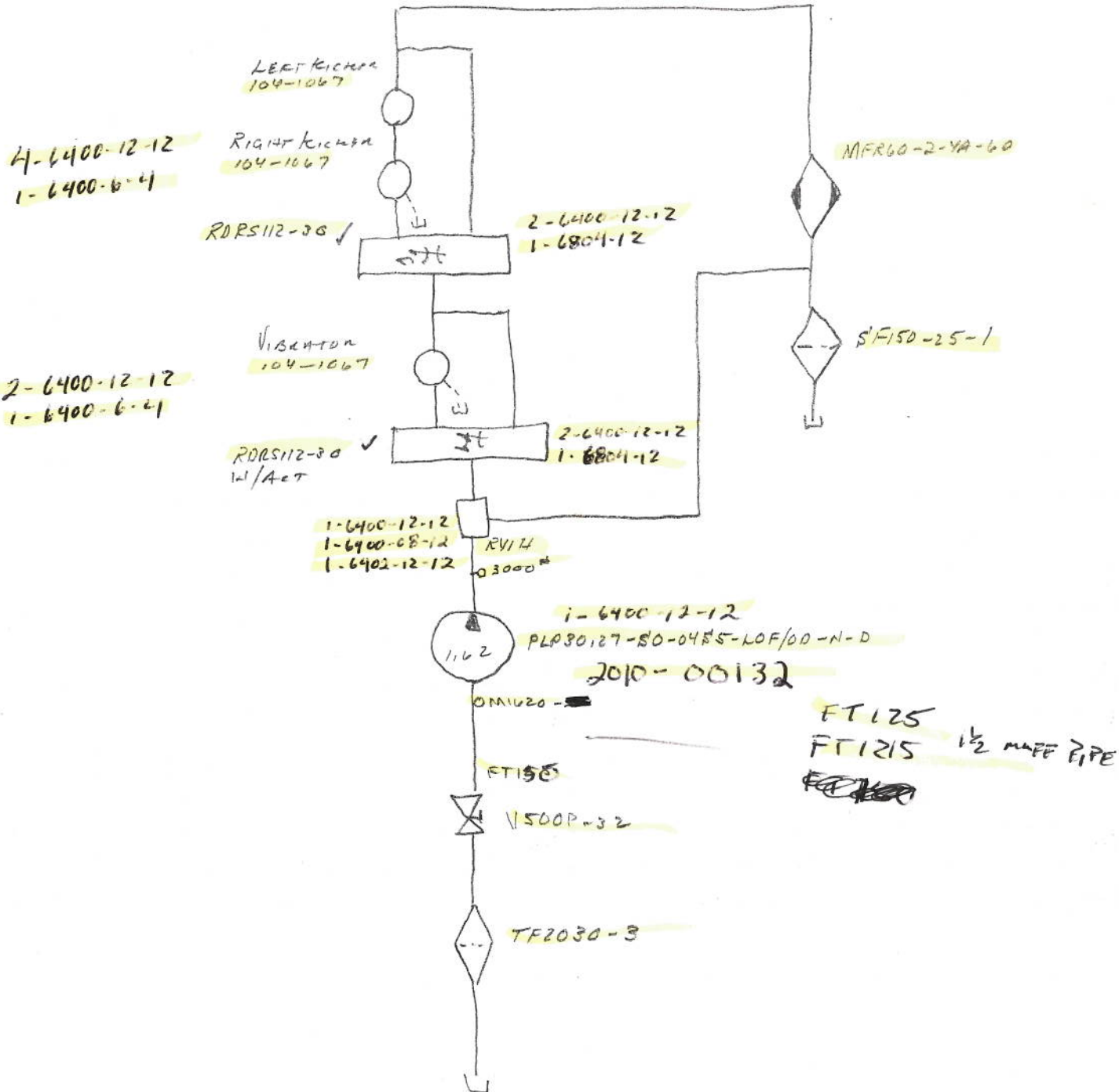
2/23/12  
 #12058  
 WORLEY S&A  
 GRATKI (R.H.)



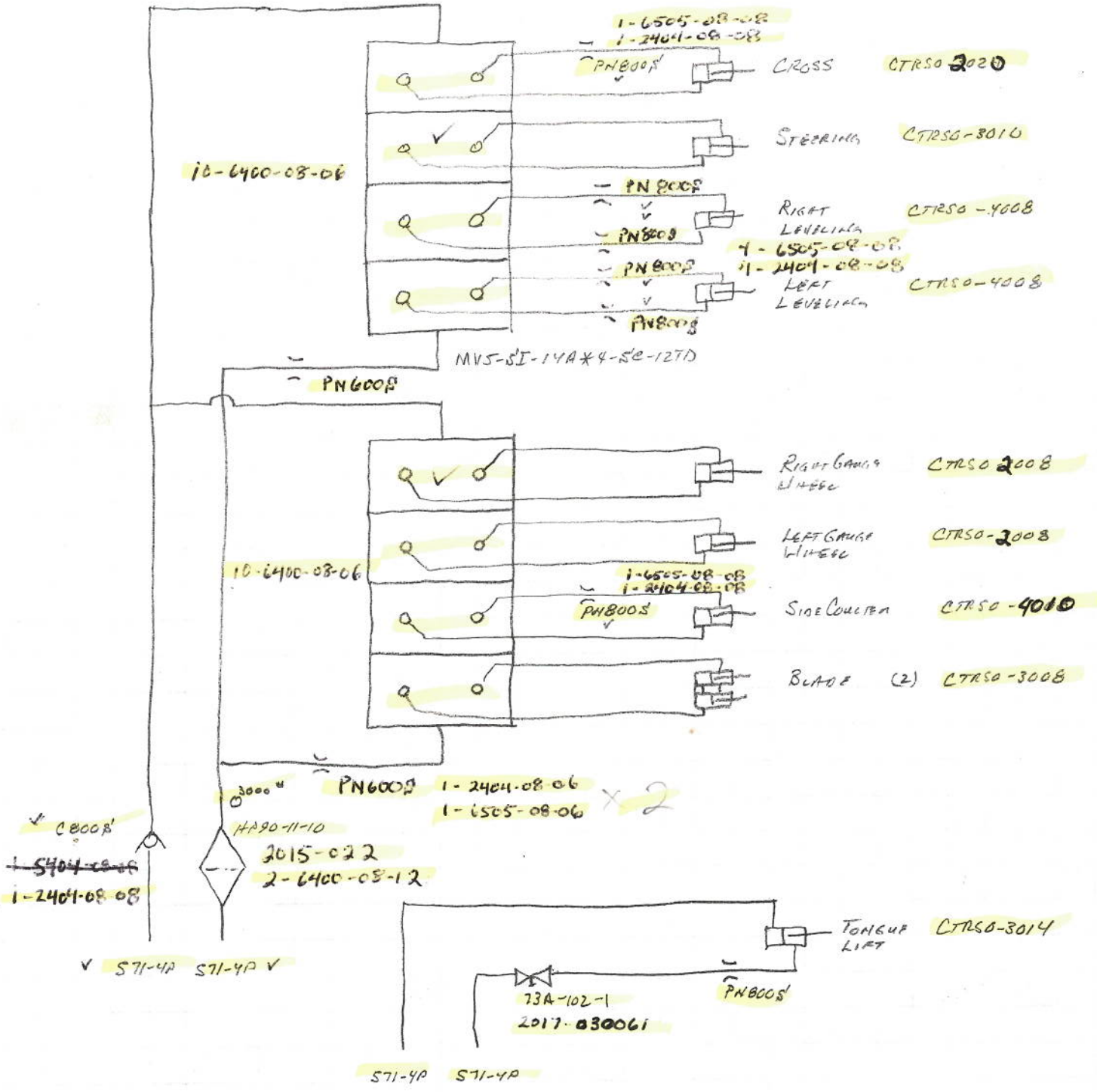
1- 6405-24-24  
 1- FT150  
 1- BK COOLER 450 steel

2/23/12  
 #12058  
 WORLEY B&B  
 GRPTW (R.H.)

1- 6400-16-24  
 2- 6602-16-16-16  
 3- 2406-16-12



2/23/12  
 #12058  
 WOLLEY SEED  
 BRATW (R.H)



2/23/12  
 #12058  
 WOLLEY SEAN  
 GRATTI

④

- TF2540-3
- 2 1/2" Coupling
- 2BHL-20-40B
- 2 1/2 x 2" Bush
- FT250
- FT1350
- FT1300 2 1/2" muff PIPE
- PGP315

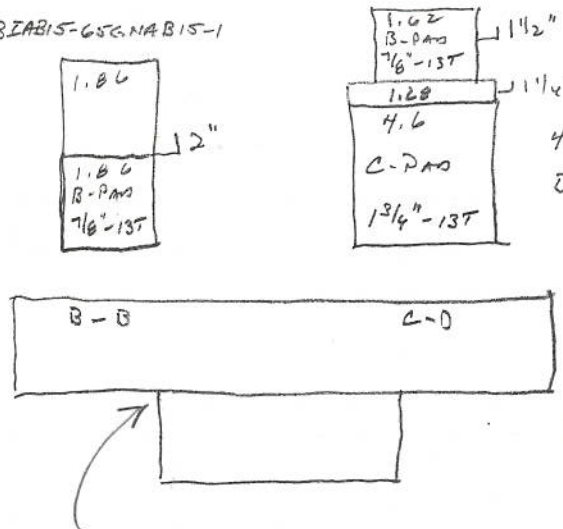
⑤

- TF2030-3
- 2" Coupling
- V500P-32
- 2" x 1 1/2" Bush
- FT150
- FT1215
- FT125 1 1/2" muff PIPE
- PLP30.27

②

- 2' 90° St Fl
- 2" Coupling
- V500P-32
- 2" x 1 1/2" Bush
- 1 1/2" Coupling
- SF150-25-5
- 1 1/2" Coupling
- V500P-24
- FT150
- FT1215
- FT125 1 1/2" muff PIPE
- 4622

PGP315 B296 B1AB15-65G NAB15-1



PLP30.27-50-0455-LOF10A-N-D

4622  
 DTS-80050

- 4 - 1/2 - 13 x 1 1/2 SHCS
- 4 - 1/2 - 13 x 1 1/4 SHCS

- ZP006-1.48E-005-CDH-BBH-LS
- DTS-6820-10 (2023-0242)
- 12D06-1.6TI-002-CDH-LS
- DTS-6310-2 (2023-0240)

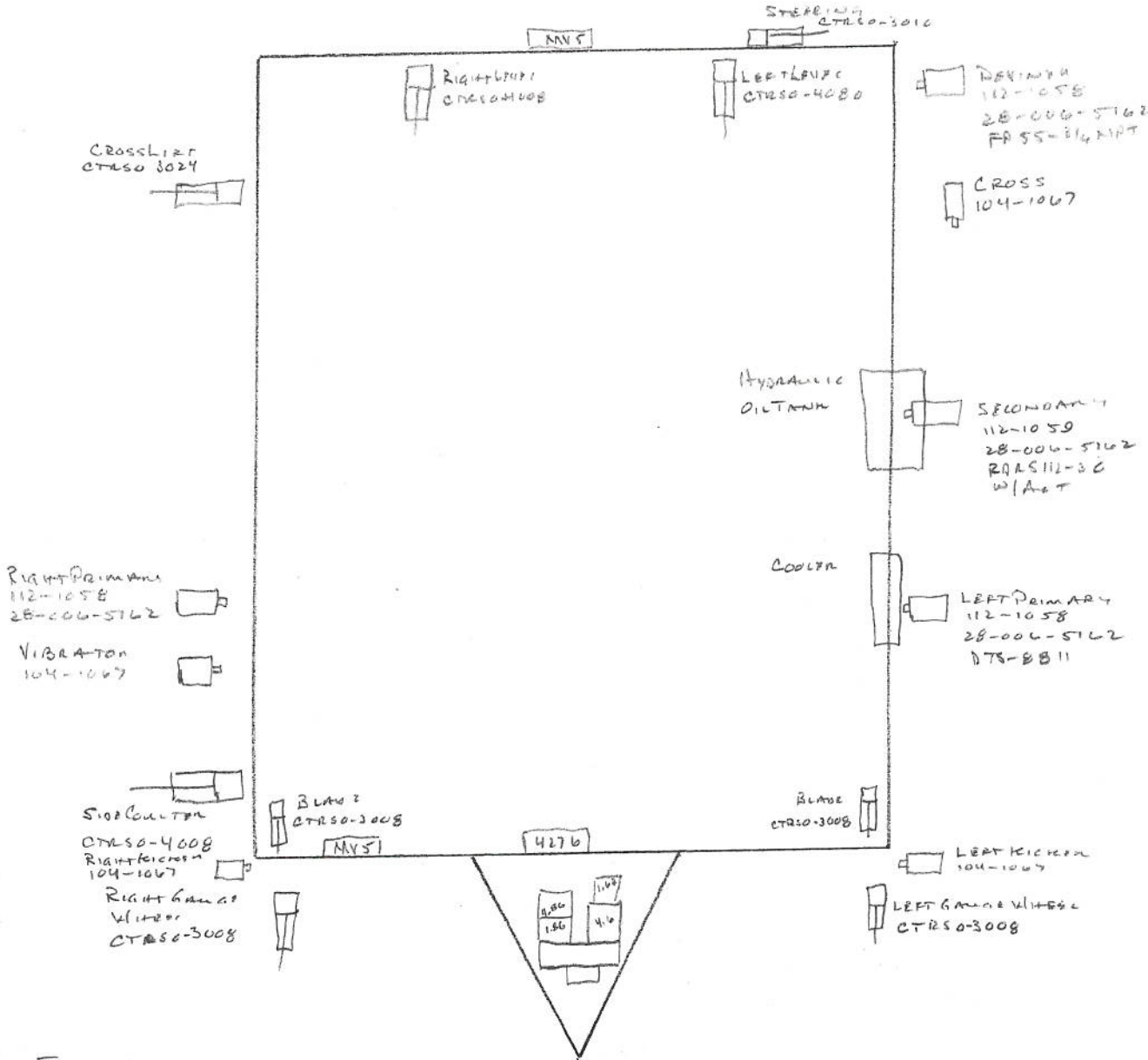
- ADAPTER PLATE 30086-019-1
- 31086-019
- 30087-019 BURNED
- 31087-019 MACHINED
- YOKE Assy 30088-019
- Yoke - 2026-0029 WELDED TO 30087-019

TOP OF TANK - "RETURN FILTERS"

- |                   |                   |
|-------------------|-------------------|
| HYDRO CASE        | COOLER RETURN     |
| 1 1/2 90° St EL   | 2 x 1 1/2 Bush    |
| 1 1/2 x 5" NIPPLE | 1 1/2 90° St EL   |
| SF150-5-1         | 1 1/2 x 5" NIPPLE |
| 1 1/2 x 3/4" Bush | SF150-5-1         |
| 2404-12-12        | 1 1/2 90° St EL   |
|                   | FT150             |

- 1 - 2" CAP (SHIPPING)
  - 1 - 3/4" x 2" BELL
  - 1 - BF12
- } TANK VENT

2/23/12  
 #12058  
 WORLEY SPEED  
 GRATIA (R.H.)



TANDEM 1.86  
 PCP315 B296 BIAB15-65GNAB15-1

1.62  
 PLP 30.27-50-0485-LOF/CO-N-D

4622- ---  
 DTS-80045  
 (1/2"-13/16" PAO - Aux)