

DURST GEARBOX
HDI-CB-064

LEFT PRIMARY
STB-6A-05-K3
104-1747
8.0 IN³

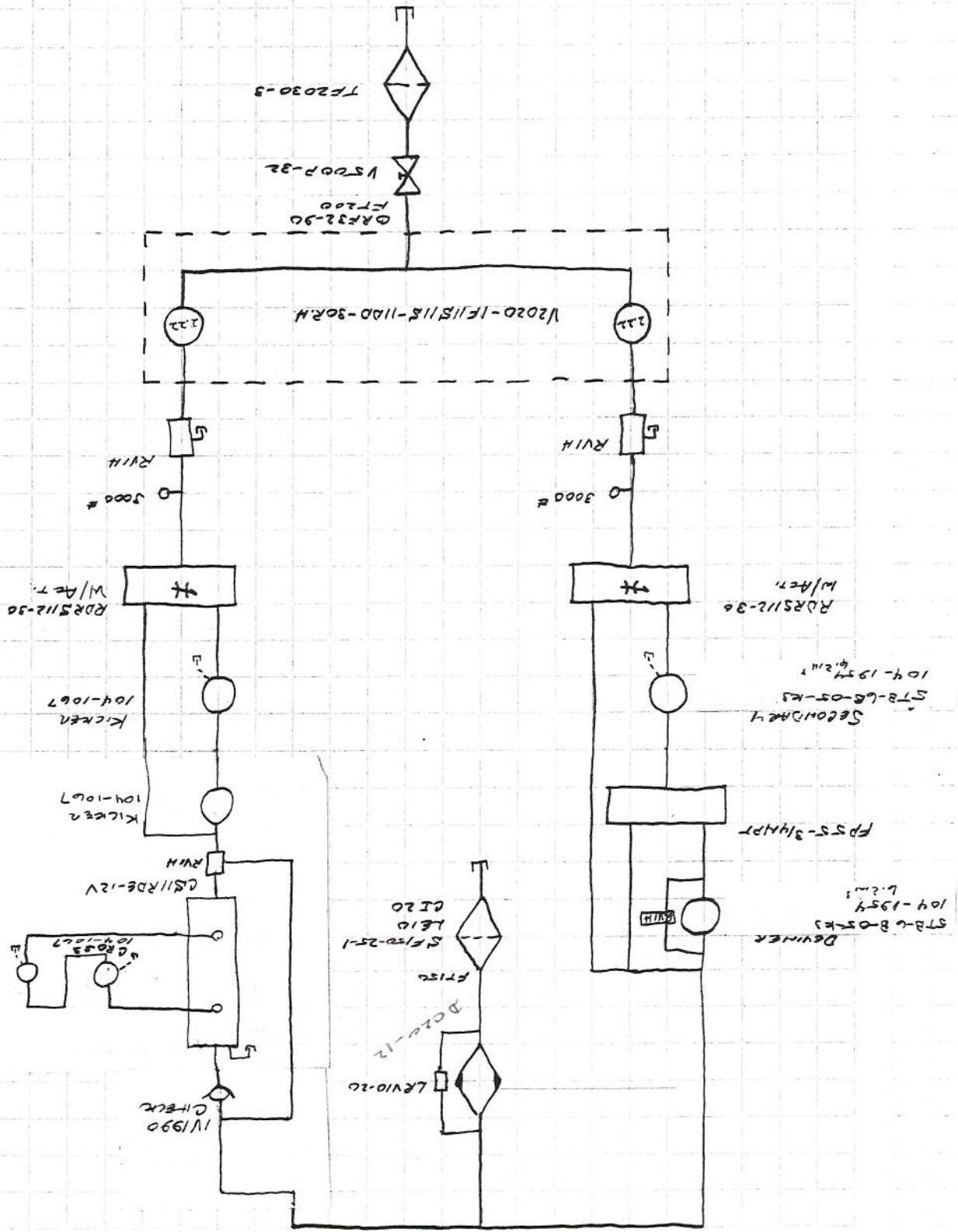
RIGHT PRIMARY
STB-6A-05-K3
104-1747
8.0 IN³

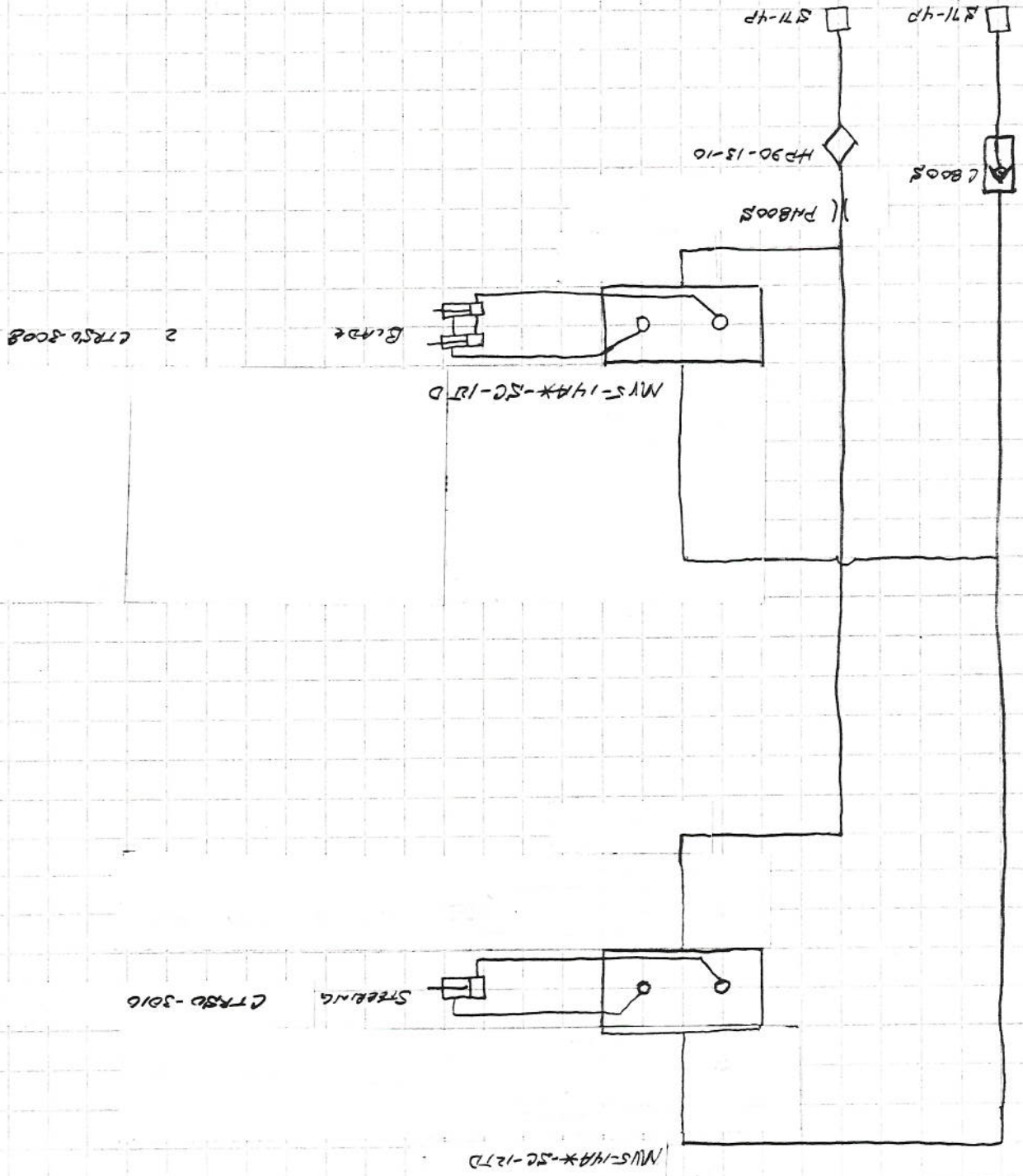
Full Type Winrower
H6 Hydro-Primary Circuit

2/5/64
#04001
Kloster Seed Form
4PPTV1

2/5/04
 #04221
 WAREHOUSE TEAM
 4PPTV1

PULL TYPE WINDROWER
 SECONDARY - CROSS CIRCUITS





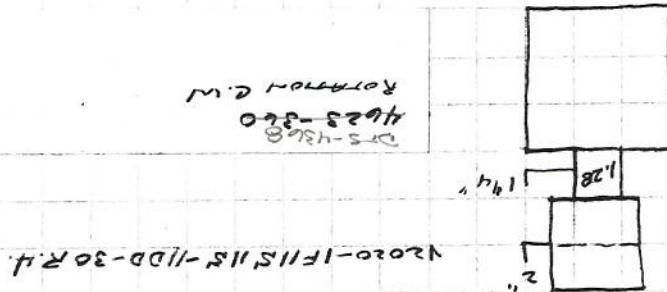
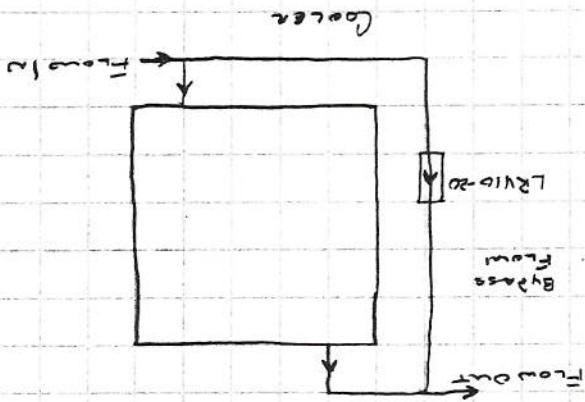
Full Type Winch Motor
Five Bar Circuit

2/3/04
Kajal
Morley Seed Farm
4907H

9/2/03
 #0321
 Wally SSO Team
 YRTH

Full Type WINDOWER
 - HYDRAULIC DIE TAPE

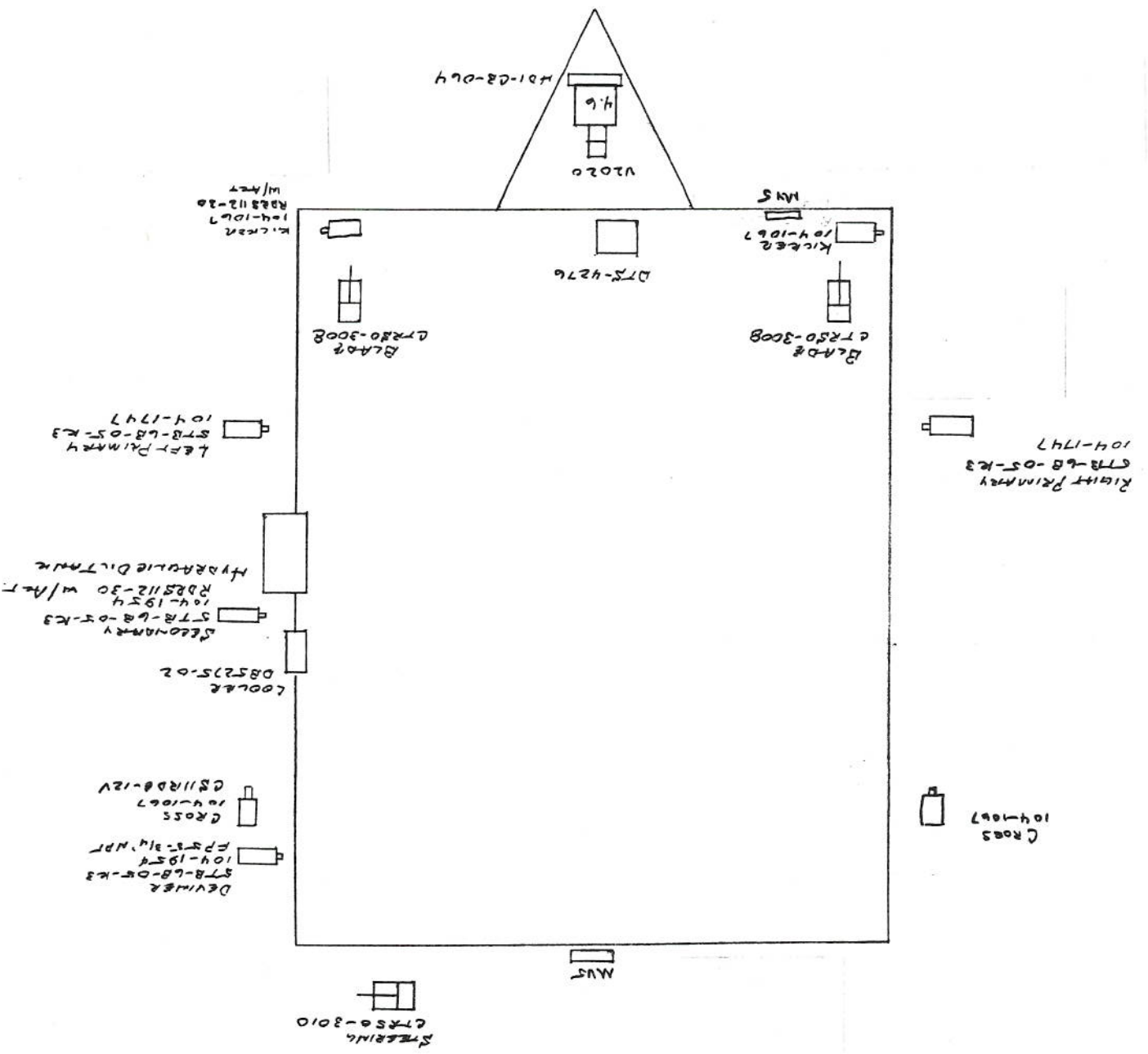
- (3)
- T2030-3
- 2" C/S NIP
- V500P-32
- FT200
- * V2020
- 2" X 1 1/4" BUSH
- 1 1/4" C/S NIP
- V500P-20
- 1 1/4" C/S NIP
- SF120-25-5
- FT1215
- * 4L Hydro GHT.



DURST GEM Box
 H01-28-064

2/5/04
 #04221
 HOLEYSEED FARM
 HPTW

PULL WINDROWER FRAME
 RIGHT HAND DISCHARGE



KICKER
 104-1067
 RBS112-30
 w/A/T

BLADE
 TR50-3008

DT5-4276

BLADE
 TR50-3008

LEFT PRIMARY
 STR-68-05-K3
 104-1747

RIGHT PRIMARY
 STR-68-05-K3
 104-1747

SECONDARY
 STR-68-05-K3
 104-1954
 RBS112-30 w/A/T
 HYDRAULIC DILTRAK

COOLER
 DB525-02

DEVIATOR
 STR-68-05-K3
 104-1954
 F35-314 NPT
 CROSS
 104-1067
 GS11RDB-12V

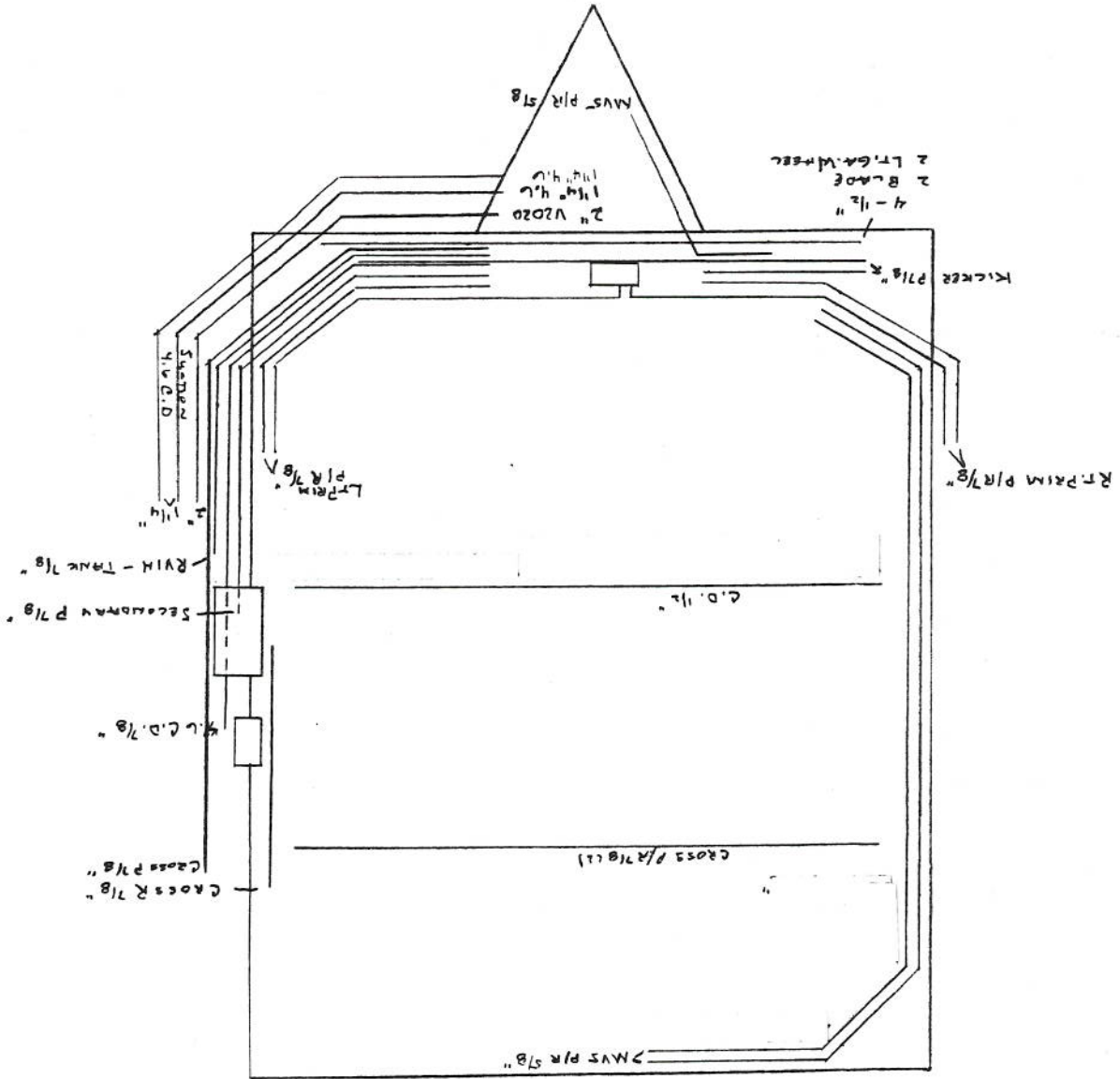
CROSS
 104-1067

STEERING
 TR50-3010

MNS

V1020
 4.6
 KICKER
 104-1067

MNS



Pull Windrower Frame
RIGHT HAND DISCHARGE

2/5/04
E04221
Worley Seed Farm
4RPTV

4/30/04
04001

WOLLEY SEEDTEAM
4RPTW

FRAME
PIN #

FRAME PIN #	WOLLEY SEEDTEAM	4RPTW	FRAME PIN #	WOLLEY SEEDTEAM	4RPTW
45	L FLASHERS	2 Black/White	2	- 2X464	
13	PRIMARY PUMP RETURN	3 Black	3	> SS208C-BK	
15	R SECONDARY RDRS112-30 RETURN	4 Red	4	> SS208C-BK	
19	R KICKER RDRS112-30 RETURN	6 Orange	6	> SS208C-BK	
9	R KICKER RDRS112-30 RETURN	8 Blue	8	> SS208C-BK	
9	L CROSS CONNECTION DS11208-12V	9 White	9	- 2X464	
28	R ISMOE MVS Valve	11 White	11	> 4X203	
9	L COOLER 12VDC	12 Red/Black	12	> 4X203	
9	L STEERING MVS Valve	13 Green/Black	13	> 4X203	
38	* Red	14 Orange/Black	14	> 4X203	
38	Blue	16 Blue/Black	16	- 2X464	
45	* Black	7 Black 12 AWG	7		

30 AMP	20 AMP	20 AMP	20 AMP	FLASHERS
1	2	3	4	
COOLER	MVS Valve	RETURNDS	FLASHERS	

DS11208-12V

REAR STEERING	SM. 4 PIN #	Power Supply	Pin #
Foot Pedal	1	12VDC	1
Blue/Black - LEFT	2	Black	2
Orange/Black - RIGHT	3		3
Red	4		

Pass to Frame Return
15 Gauge from 12 AWG - 19 F.

10 AWG THHN