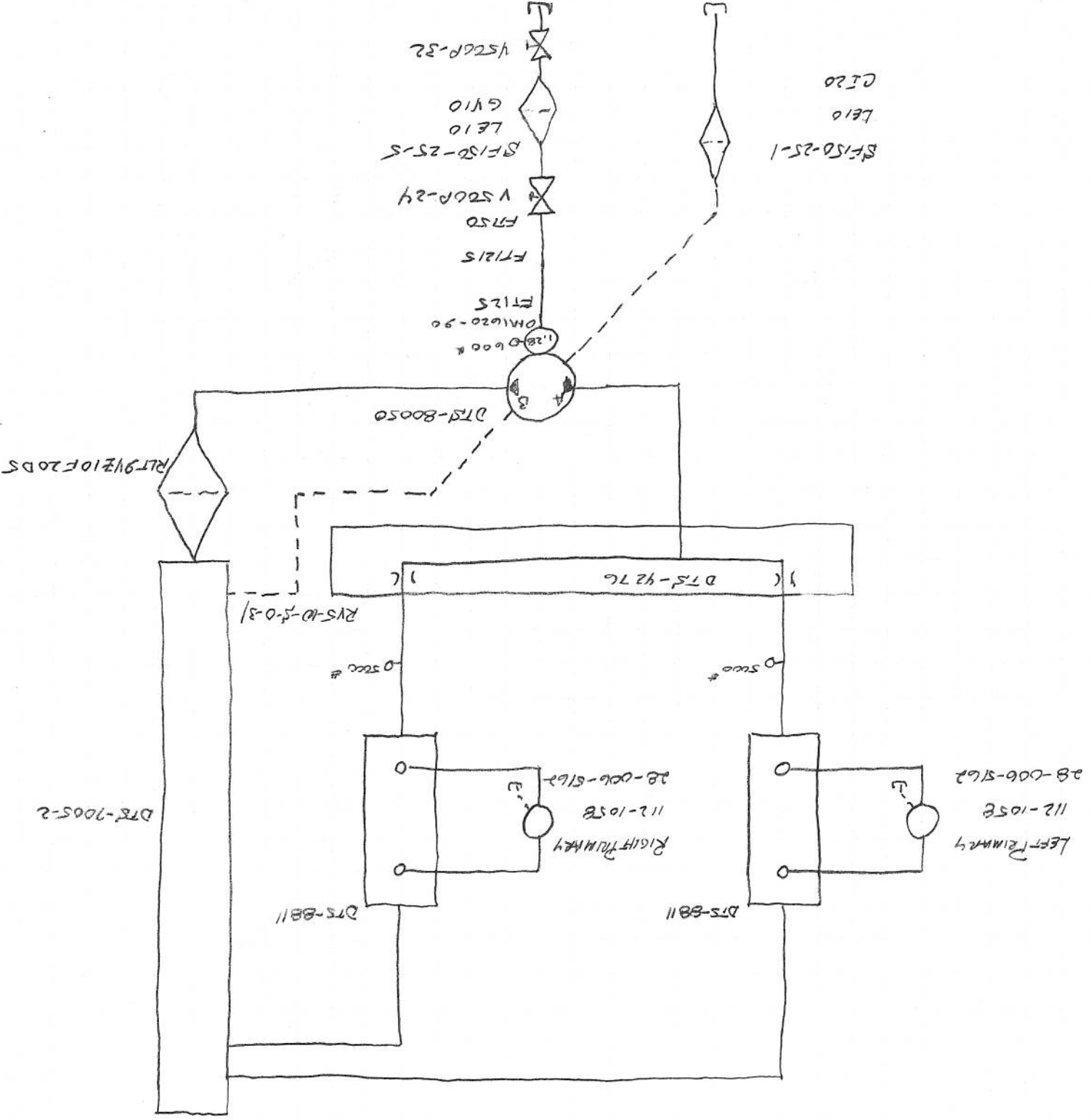


#13068

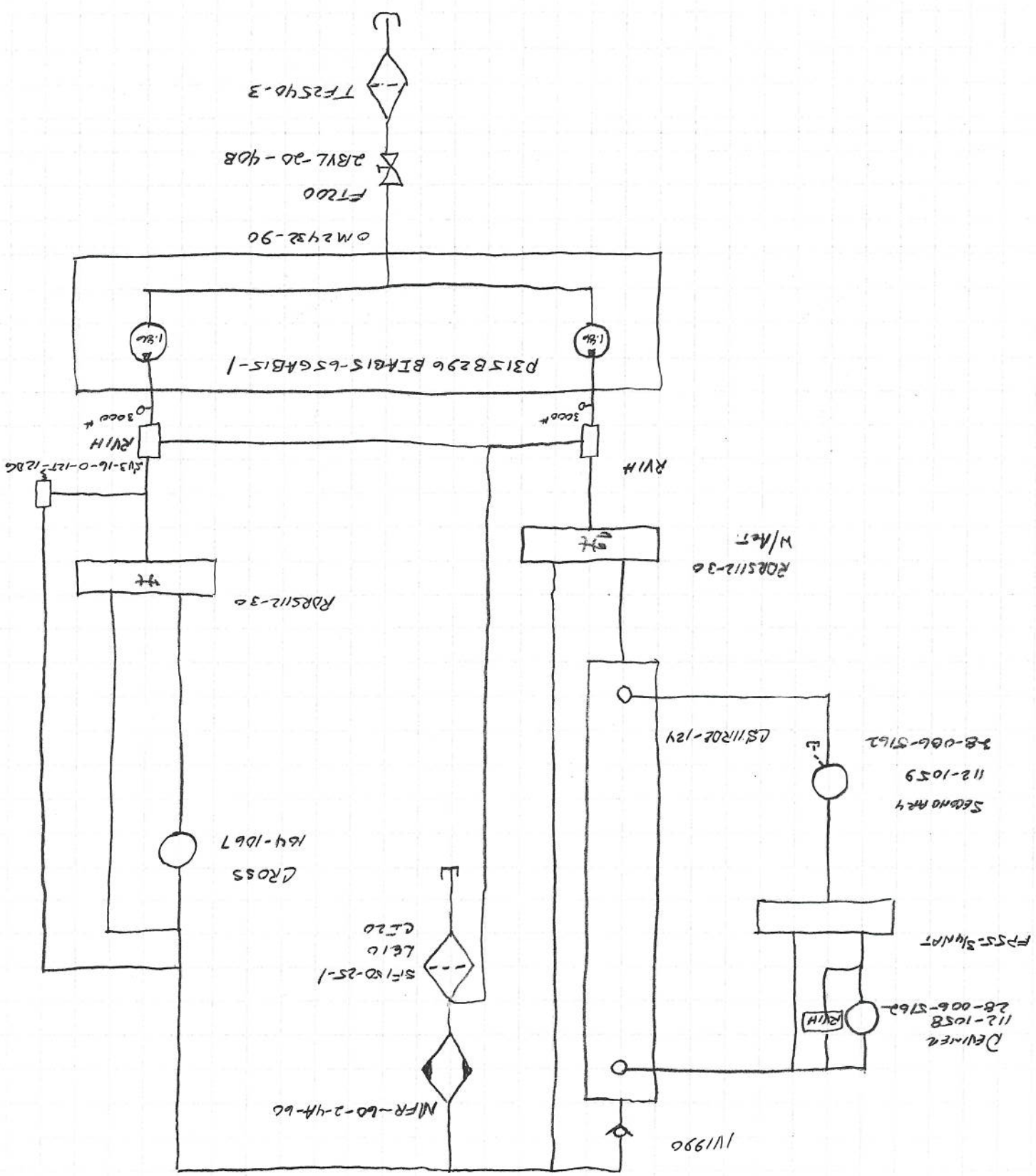
McCormick Farms

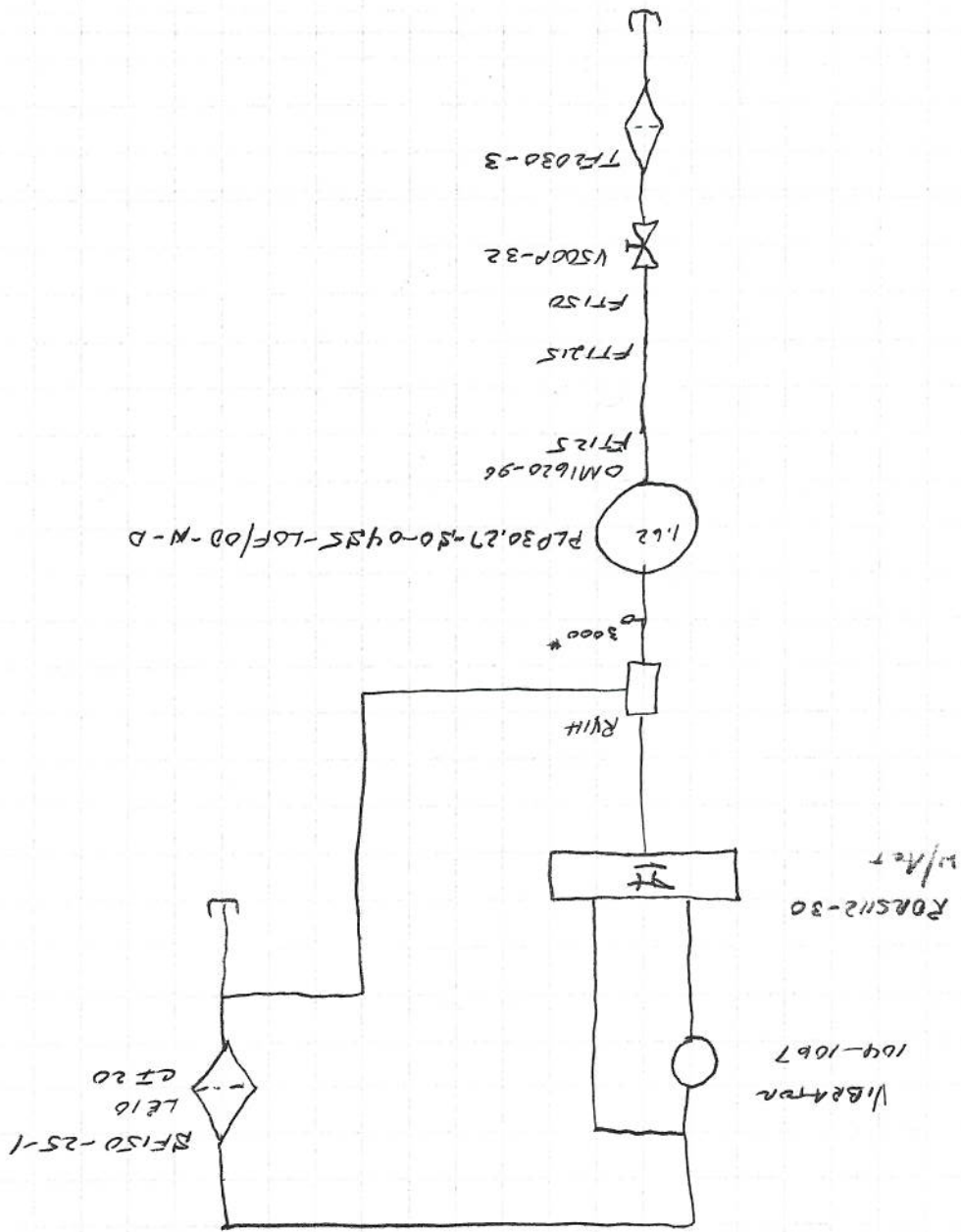
GRPTW (R.H.)



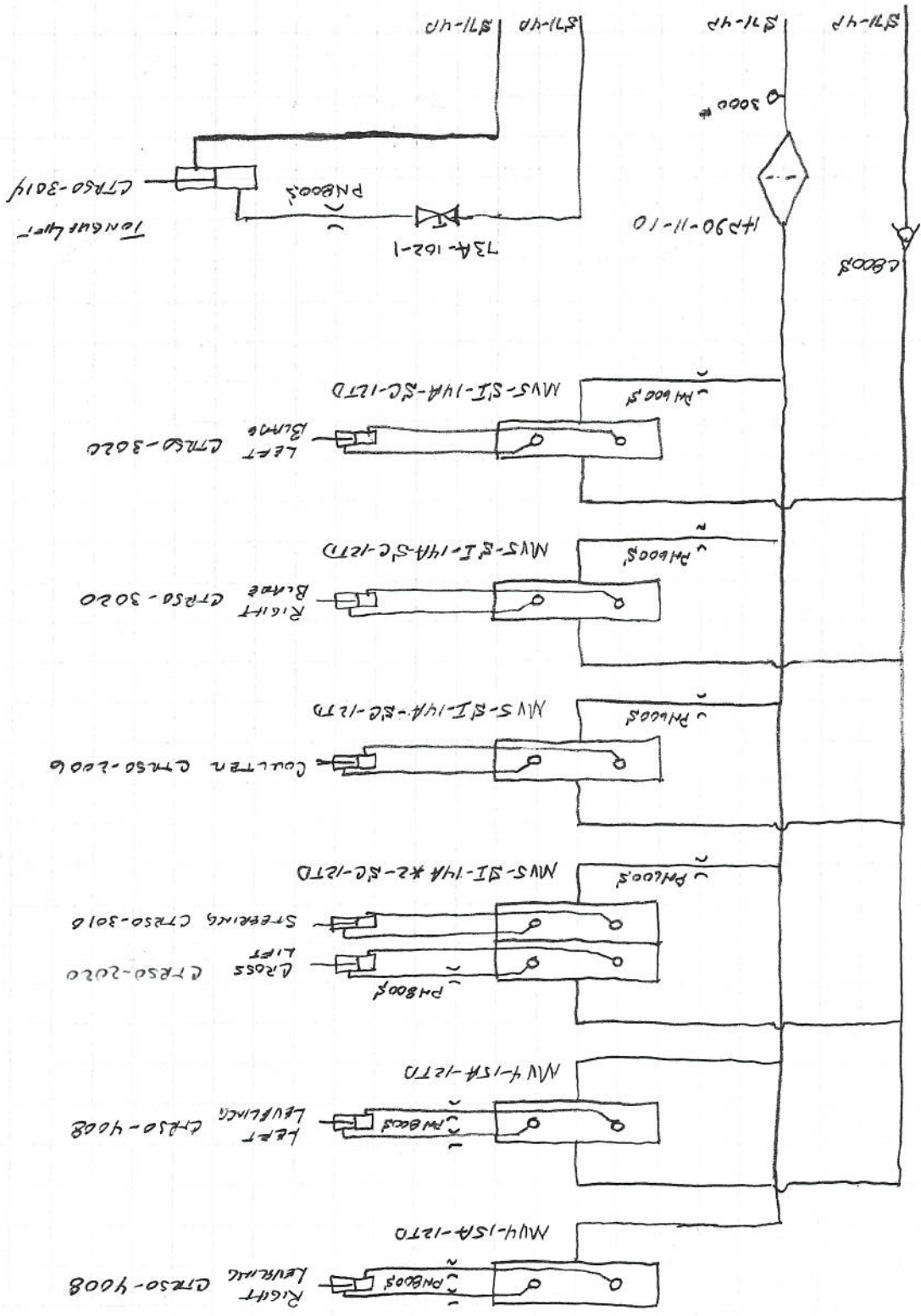
6/14/13  
 #13068  
 Mc GORMICK FORMS  
 LPTV1 RH

6/19/13  
 #13068  
 McCombs Farms  
 GREAT W. R.H.





6/14/13  
 d/13068  
 McCarroll Form 5  
 WPTV - L.H.



6/14/13  
 #13068  
 McConnick Farms  
 LEPTW RA

30088-019

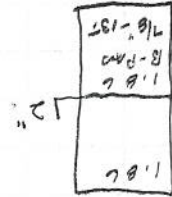
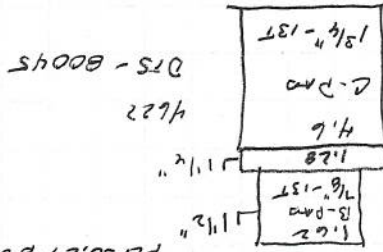
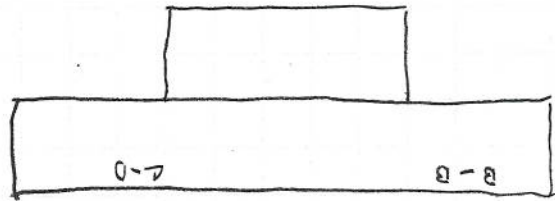
31087-019

30087-019

31086-019

30086-019

27006-1.48I-005-CDH-B8H-L5  
 DTS-6828-10 (2023-0222)  
 IPD06-1.6TI-002-CDH-L5  
 DTS-6310-2 (2023-0240)



PLP30.27-80-0455-LDFOR-N-D

PGP315 B296 B2M815-656M815-1

- \* 4622
- FT125
- FT125
- FT125
- FT125
- V520P-24
- 1 1/2" Cas NIP
- 5F150-25-5
- 1 1/2" Cas NIP
- 2" x 1 1/2" Bush
- V520P-32
- 2" Cas NIP
- 2" 90° Str Ecc

- \* PLP30.27
- FT125
- FT125
- FT150
- 2" x 1 1/2" Bush
- V520P-32
- 2" Cas NIP
- TF2230-3

- \* PGP315
- FT1520
- FT1520
- FT200
- 2 1/2 x 2" Bush
- 2B1L-20-40B
- 2 1/2" Cas NIP
- TF22540-3

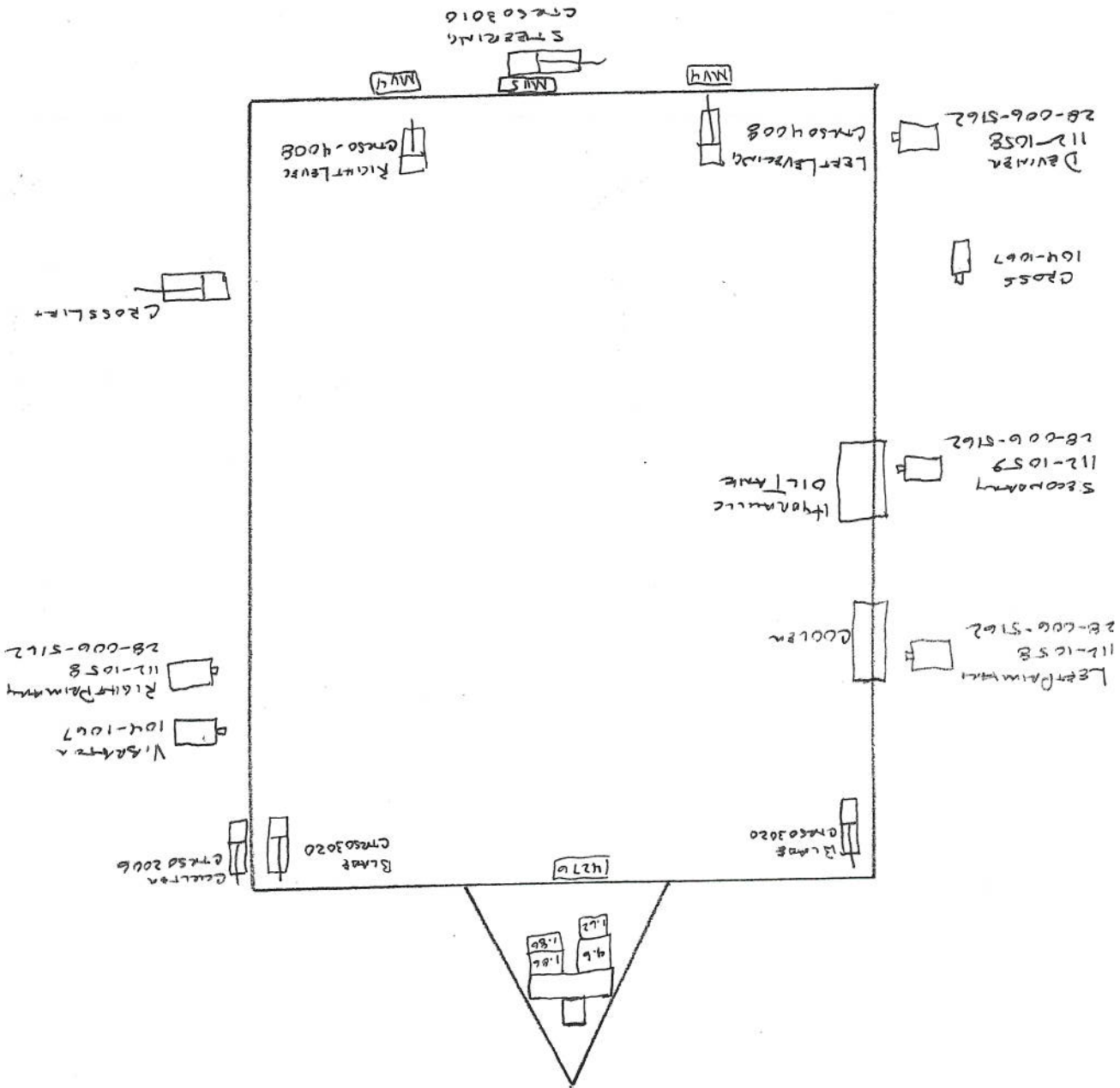
(2)

(5)

(4)

6/14/13  
 #13068  
 MC GERMINEK FRAMS  
 LORNAI R.H

6/14/13  
 E13068  
 McORMICK Farms  
 GREAT R.H.



6RPTW

PLUG #1  
PIN #

1	YELLOW	5	FLASHERS
2	BLACK	17	STEERING MV5 VALVE
3	BLACK	22	STEERING MV5 VALVE
4	BLUE	3	LEFT LEVELING MV5 VALVE DOWN
5	BLUE	8	LEFT LEVELING MV5 VALVE UP
6	BROWN	36	RIGHT LEVELING MV5 DOWN
7	BROWN	38	RIGHT LEVELING MV5 UP
8	BROWN	6	SECONDARY REVERSING VALVE
9	ORANGE	14	LEFT PRIMARY REVERSING - FORWARD
10	ORANGE	19	LEFT PRIMARY REVERSING - REVERSE
11	ORANGE	30	RIGHT PRIMARY REVERSING - FORWARD
12	GREEN	31	RIGHT PRIMARY REVERSING - REVERSE
13	RED	32	VIBRATOR RDRS112-30 ACTUATOR
14	YELLOW	33	VIBRATOR RDRS112-30 ACTUATOR
15	ORANGE	4	SECONDARY RDRS112-30 ACTUATOR
16	ORANGE	9	SECONDARY RDRS112-30 ACTUATOR
17	BROWN	21	CROSS CONVEYOR SWITCH TO SV3-16 SOLENOID
18	BLUE	29	CROSS CONVEYOR MV5 VALVE DOWN
19	WHITE	28	CROSS CONVEYOR MV5 VALVE UP
20	BROWN	117	COULTER MV5 VALVE DOWN
21	YELLOW	116	COULTER SWITCH UP TO JUNCTION BOX
22	BLUE	30	LEFT BLADE SWITCH DOWN TO JUNCTION BOX
23	ORANGE	35	LEFT BLADE SWITCH UP TO JUNCTION BOX
24	YELLOW	76	RIGHT BLADE SWITCH DOWN TO JUNCTION BOX
25	BROWN	77	RIGHT BLADE SWITCH UP TO JUNCTION BOX
26	BLACK	119	BLADE MASTER SWITCH DOWN TO JUNCTION BOX
27	RED	118	BLADE MASTER SWITCH UP TO JUNCTION BOX
28			
29			
30			
31			
32			
33			
34			
35			
36	CLEAR		PIN "A" COIL #1 - YELLOW FROM KAR-TECH CONTROLLER
37	BLACK		PIN "B" COIL #1 TO PANEL GROUND
<b>3 - PIN PLUG</b>			
PIN #	RED	1	+ 12VDC POWER SUPPLY 8 AWG
	BLACK	2	- GROUND 8 AWG
	3		
PIN #	RED	1	+ 12VDC POWER TO COOLER FANS
	BLACK	2	- PANEL GROUND TO FRAME GROUND
	3		