

MasterQuart

#10041

8RS P W



MARQUART  
W: 1111

# Detail Dept Fittings List W.D. # 033687

Part #	Description	New #	Quantity
840FS-06	JIC Tube Sleeve	319-06	X IIII XXV III III III III
840FS-08	JIC Tube Sleeve	319-08	8, 4,
840FS-10	JIC Tube Sleeve	319-10	8, 8
840FS-14	JIC Tube Sleeve	319-14	X x IIII III III III III III 6, 8, 4, 8
840FS-16	JIC Tube Sleeve	319-16	6, 6, 4, 4, 4,
841FS-06	JIC Tube Nut	318-06	X III III X IIII III III III III
841FS-08	JIC Tube Nut	318-08	8, 4,
841FS-10	JIC Tube Nut	318-10	8, 8
841FS-14	JIC Tube Nut	318-14	X x IIII III III III III III 6, 8, 4, 8,
841FS-16	JIC Tube Nut	318-16	6, 6, 4, 4, 4,
842FS-06	Male JIC x Male JIC	2403-06	X III III x V I III I I
842FS-08	Male JIC x Male JIC	2403-08	8, 4, 4,
842FS-08-06	Male JIC x Male JIC	2403-08-06	III III I
842FS-10-08	Male JIC x Male JIC	2403-10-08	4, 4, 8
842FS-14	Male JIC x Male JIC	2403-14	III V
842FS-14-12	Male JIC x Male JIC	2403-14-12	III III III III III III III III III III III
842FS-16	Male JIC x Male JIC	2403-16	III
842FS-16-12	Male JIC x Male JIC	2403-16-12	<del>III III III III</del> III
844FS-06	Male JIC Tee	2603-06	
844FS-08	Male JIC Tee	2603-08	
844FS-08-08-06	Male JIC Tee	2603-08-08-06	
844FS-14	Male JIC Tee	2603-14	III
844FS-16-16-16	Male JIC Tee	2603-16-16-16	III
883FS-12-16	Female JIC x Male JIC Rdcr	2406-12-16	I
883FS-14-12	Female JIC x Male JIC Rdcr	2406-14-12	III

~~III~~-842-FS-10x10 - IIII  
II-871FS 12x12

II- Z634A 12x12



MARQUART  
WINDROVER

# Detail List

Part#	Description	Qty
100037	3/8" Steel Line Clamp	XXXX
100050	1/2" Steel Line Clamp	XXXXXX
100062	5/8" Steel Line Clamp	XX
100087	7/8" Steel Line Clamp	XXXXXXXXXXXXXXXXXX III
100100	1" Steel Line Clamp	XXX
100125	1 1/4" Steel Line Clamp	
100150	1 1/2" Steel Line Clamp	
100200	2" Steel Line Clamp	
100225	2 1/4" Steel Line Clamp	
100250	2 1/2" Steel Line Clamp	
ABAX1000-06	Straight Tube Adapter to JIC Male #6	
ABAX1000-08	Straight Tube Adapter to JIC Male #8	<del>XXX</del>
ABAX1000-10	Straight Tube Adapter to JIC Male #10	
ABAX1000-14-12	Strght Tube Adptr to JIC Male #14-12	
ABAX1000-16	Straight Tube Adapter to JIC Male #16	
BA19-06	3/8" Replacement Sleeve	
BA19-08	1/2" Replacement Sleeve	<del>XXX</del>
BA19-10	5/8" Replacement Sleeve	
BA19-14	7/8" Replacement Sleeve	
BA19-16	1" Replacement Sleeve	
BAX1100 06	3/8" NPT Female x 3/8" Tube	
BAX1100 08	1/2" NPT Female x 5/8" Tube	
BAX1100 10	1/2" NPT Female x 5/8" Tube	
BAX1100 14	3/4" NPT Female x 7/8" Tube	
BAX1200 06	3/8" Tube Union	
BAX1200 08	1/2" Tube Union	<del>XXX</del>
BAX1200 10	5/8" Tube Union	
BAX1200 14	7/8" Tube Union	
BAX1200 16	1" Tube Union	
BAX3100 06	3/8" NPT x 3/8" Tube Tee	
BAX3100 08	1/2" NPT x 1/2" Tube Tee	
BAX3100 10	1/2" NPT x 5/8" Tube Tee	
BAX3100 14	3/4" NPT x 7/8" Tube Tee	
BAX3100 16	1" NPT x 1" Tube Tee	
BAX3200 08	1/2" Tube Tee	
BAX3200 14	7/8" Tube Tee	
BAX3200 16	1" Tube Tee	



MARQUART

# Thermo King

Fitting

Hose

Fitting

20 FT

1.

70R4601S

#12 Hose CAB/PUMP

#12 Hose To #10 Fitt  
STR-ML Insert

166"

2.

70R4498S

#8 Hose Pump/COND

70R4408S

20 FT

3.

70R4496S

#6 Hose CAB/REC-Device 70R4506S

70R4496S

#6 Hose Battery/REC-Device 70R4496S

139"

4.

Painted numbers on Hose at 12 O-Clock



11 O-Clock



12 O-Clock

## COMPRESSOR SERVICE FITTING

1 - 75R5641 (#10)

1 - 75R5648 (#8)

# HYDRAULICS FINISH MATERIALS LIST

BEGINNING DATE  
END DATE

PROJECT NO. SERVICE KIT

#10041  
MARQUART  
8RSPW

QTY	PART NUMBER	DESCRIPTION
1	30003-004	RIVET CUTTER
2	40000-004	CHAIN BINDER
2	30020-019	BRAKE BOLTS
3	2015-014	LE-10
2	2015-000	3702123A
2	2015-010	9V210
1	2021-00700	H70K O-RING KIT
1	2021-00900	H90K O-RING KIT
1	2015-003	H72610
1	2021-10600	600# GAUGE
1	2021-15000	5000# GAUGE
1	2021-10000	10,000# GAUGE
2	GP6504-12-12-4	TEST TEE
1	6564-16-16-4	TEST TEE
1	GP6504 08-08-04	TEST TEE
1	2403-16	842FS 16
4	GCP04	DGA 20-1/4 NPT
4	TPO 04	TCM 20-7/16 UNEF
4	2021-16027	60257 SNRBER
2	304-C-06	
2	304-C-08	
2	304-C-10	
2	304-C-12	
2	304-C-16	
2	2408-06	
2	2408-08	
2	2408-10	
2	2408-12	
2	2408-16	
2	6408-HHP-04	





MARQUART'S

4- 8"  $\frac{3}{8}$  -  $\frac{3}{8}$  2+ 2-  
1- 20"  $\frac{3}{8}$  -  $\frac{1}{2}$  -  
2- 28"  $\frac{3}{8}$  -  $\frac{1}{2}$  1+ 1-  
1- 22"  $\frac{3}{8}$  -  $\frac{1}{2}$  +  
1- 30"  $\frac{3}{8}$  -  $\frac{1}{2}$  -  
1- 38"  $\frac{3}{8}$  -  $\frac{1}{2}$  -  
1- 44"  $\frac{3}{8}$  -  $\frac{3}{8}$  +  
1- 54"  $\frac{3}{8}$  -  $\frac{3}{8}$  +

296" 24.66 FT

42  
PART  
Rim  
CH  
600

LEFT  
RIM  
5000  
42

42  
CENTER  
Rim  
CH  
600

LEFT  
RIM  
6000  
42

42  
G.D  
10000

RIGHT  
RIM  
5000  
42

42  
G.D.  
CH  
600

LEFT  
SEC  
3000  
42

42  
BRAKE  
CH  
600

RIGHT  
SEC  
3000  
42

STEERING  
3000

LEFT  
STAR  
3000  
42

RIGHT  
STAR  
3000  
42

RIGHT  
STAR  
DIST  
3000  
42

CROSS  
3000  
42

# AFE New Equipment Chain Verification Sheet

Chain For HJV Equip / Marquarts #10041 8RSPW

AFE Part #	Description	Brand	Location
2003-00692	1/2x32x50mm 2x60 2DNPL-1STPL - 133+ (22')	Noffsinger	Primary (8)
2003-00693	7/16x65x50mm 3x60 STSRT - 60+ (10')	Noffsinger	Secondary (4)
2003-00045	5/8x65x150mm 2x60 STSRT - 65LPR (32')	Noffsinger	Deviner (4)
2003-00694	7/16x24x50mm 2x60 STSRT - 304+ (50')	Noffsinger	Cross (2)
2003-00695	7/16x24x50mm 2x60 STSRT - 60+ (10')	Noffsinger	Boom Short
2003-00696	7/16x24x50mm 2x60 STSRT - 121+ (20')	Noffsinger	Boom Long

Clips loose one end on all chains.

Dealer Rep \_\_\_\_\_ Date \_\_\_\_\_

Customer \_\_\_\_\_ Date \_\_\_\_\_



Roger Summey

1-10-12

**From:** Randal Jewell [randal@hjvequip.com]  
**Sent:** Saturday, January 07, 2012 7:54 AM  
**To:** Roger Summey; luc@hjvequip.com  
**Subject:** PARTS NEEDED TO BE SENT TO MARQUARTS  
**Attachments:** Randal Jewell.vcf

ROGER I NEED THESE PARTS SENT TO MARQUART FARMS PLEASE CALL LUC FOR PO

- 17 SPLIT HOUSINGS FOR THE 1 1/2 STAR ROLLER SHAFTS 2028-13H1005L  
 17 BEARINGS NO SET SCREWS 2028-24031  
 3 REVERSING VALVES FOR STAR ROLLERS WITH ALL THE FITTINGS TO PLUMB THEM IN THE LINE  
 8 15 INCH LONG CENTER POINTS TO FIT THEIR WINDROWER WITH 32 INCH CHAIN  
 4 NOSES FOR THE WINDROWER 3/4 END PLATES 40004-012  
 6 COULTER BLADES NOTCHED 2030-02053  
 8 PIECES OF UHMW TO CUT AND BENT TO FIT THE FRONT PANS LIKE YOU SENT LAST YR  
 24 2 1/2 BOLTS FOR THE DEVINER CHAIN TO CONNECT  
 6 JOYSTICK SWITCHES WITH THE RUBBER BOOTS  
 3 STEERING FILTERS  
 1 COUPLER TO CONNECT MOTOR TO THE STEEL ROLLER ABOVE THE VINE BELT  
 1 REAR LADDER COMPLETE TO MOUNT ON THE REAR FUEL TANK ON THE HARVESTER 020-40000  
 1 1 1/4 3 BOLT BRH HOUSING COMPLETE WITH BEARING 2028-20130  
 2 DIGGER NOSES TO FIT THE HARVESTER 1 INCH SIDE PLATES 40011-012

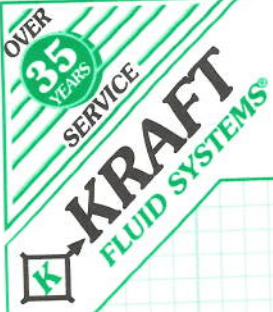
PLEASE SEND RIGHT AWAY THANK YOU

**Randal Jewell**

H.J.V. EQUIP.

(902) 566-1444 Work  
 (902) 314-0577 Mobile  
 randal@hjvequip.com  
 240 MASON RD  
 STRATFORD PE C1B 2E9  
 WWW.HJVEQUIP.COM

8 row Self Propelled  
 Windrower



Check Out Our  
Website!  
[www.kraftfluid.com](http://www.kraftfluid.com)

\_\_\_\_\_  
\_\_\_\_\_  
\_\_\_\_\_

INSIDE OF BOX

BACK

6 5 4 3 2 1

7 8 9 10 11 12

FRONT

2001-0125 12 PIN DEUTSCH RECEPTACLE

USES 1) 2001-0134 WEDGE  
2001-0107 PINS

## Hydraulic, Power Transmission & Electronic Equipment

**KRAFT FLUID SYSTEMS, INC.**  
14300 Foltz Parkway  
Cleveland, Ohio 44149  
Phone 440/238-5545  
Fax 440/238-5266



**SALES OFFICES**  
Columbus, OH  
Lafayette, IN  
Pittsburgh, PA  
Covington, KY  
Philadelphia, PA  
Toledo, OH

Help Line: 800/257-1155

- VALVE PRESSURE & RETURN HOSES ARE  $7\frac{1}{2}$ " PAST CENTER SPLIT PLATE
- Ground Drive HOSES ARE 12" PAST THE CENTER SPLIT PLATE
- 4276 IS 17" LEFT OF CENTER ON FRONT TUBE
- Center valve mount is 36" DOWN FROM CENTER SPLIT PLATE
- STEERING LINES ARE  $7\frac{1}{2}$ " PAST CENTER SPLIT PLATE
  - # 6 = RIGHT
  - # 7 = LEFT
- VALVE SUPPLY & RETURN
  - # 5 = RETURN
  - # 4 = SUPPLY
- Ground Drive LABELS AT SPLIT PLATE
  - # 1 = CASE DRAIN
  - # 2 = ~~FORWARD~~ RETURN/REVERSE
  - # 3 = FORWARD
- Ground Drive FRONT STEEL LINES ARE 17" ABOVE AXLE



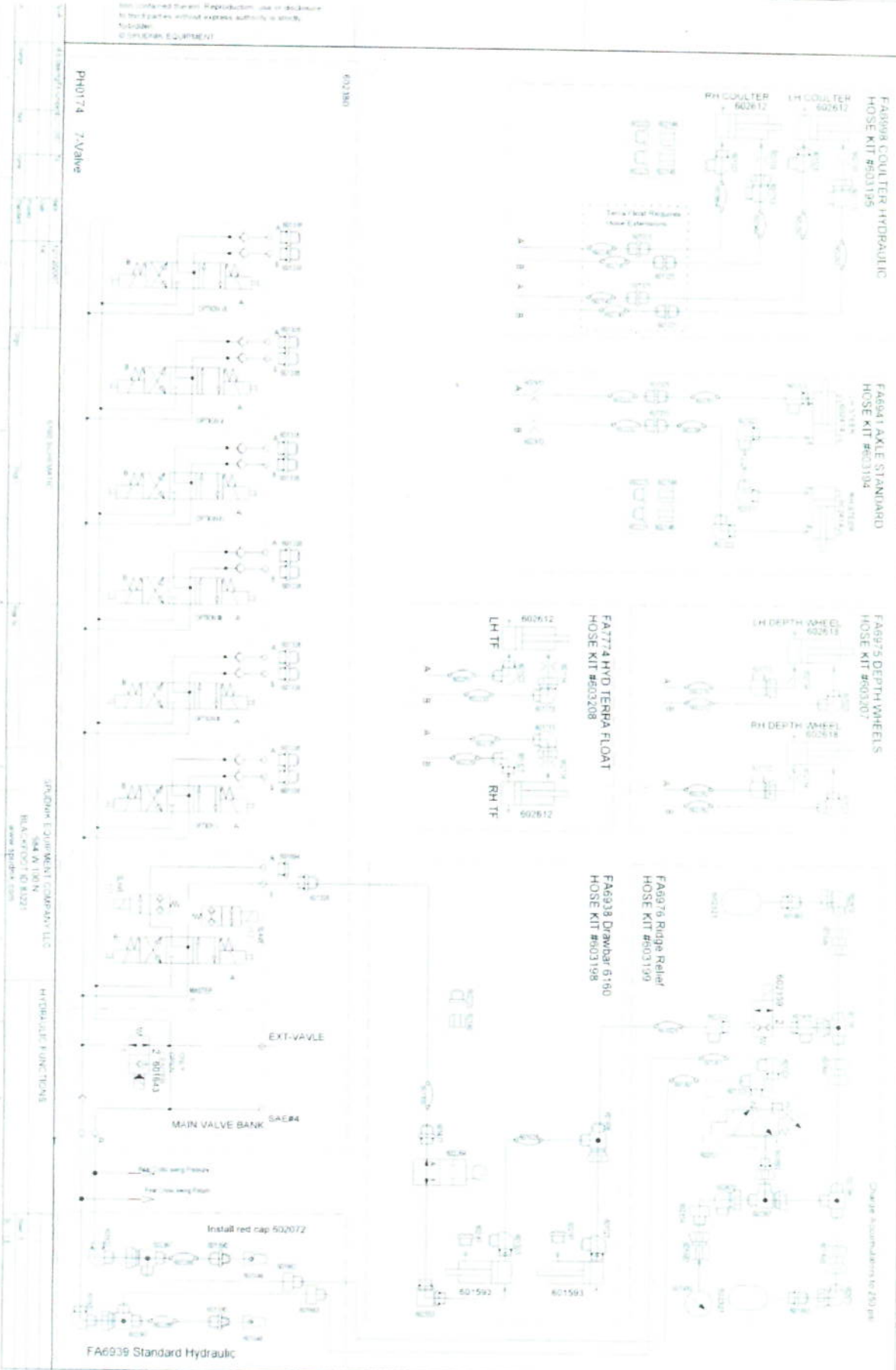




Not to be used for repair. Reproduction, use or disclosure  
 to third parties without express authority is strictly  
 forbidden.  
 © 2016/2017 EQUIPMENT

602380

PH0174 Z-VALVE

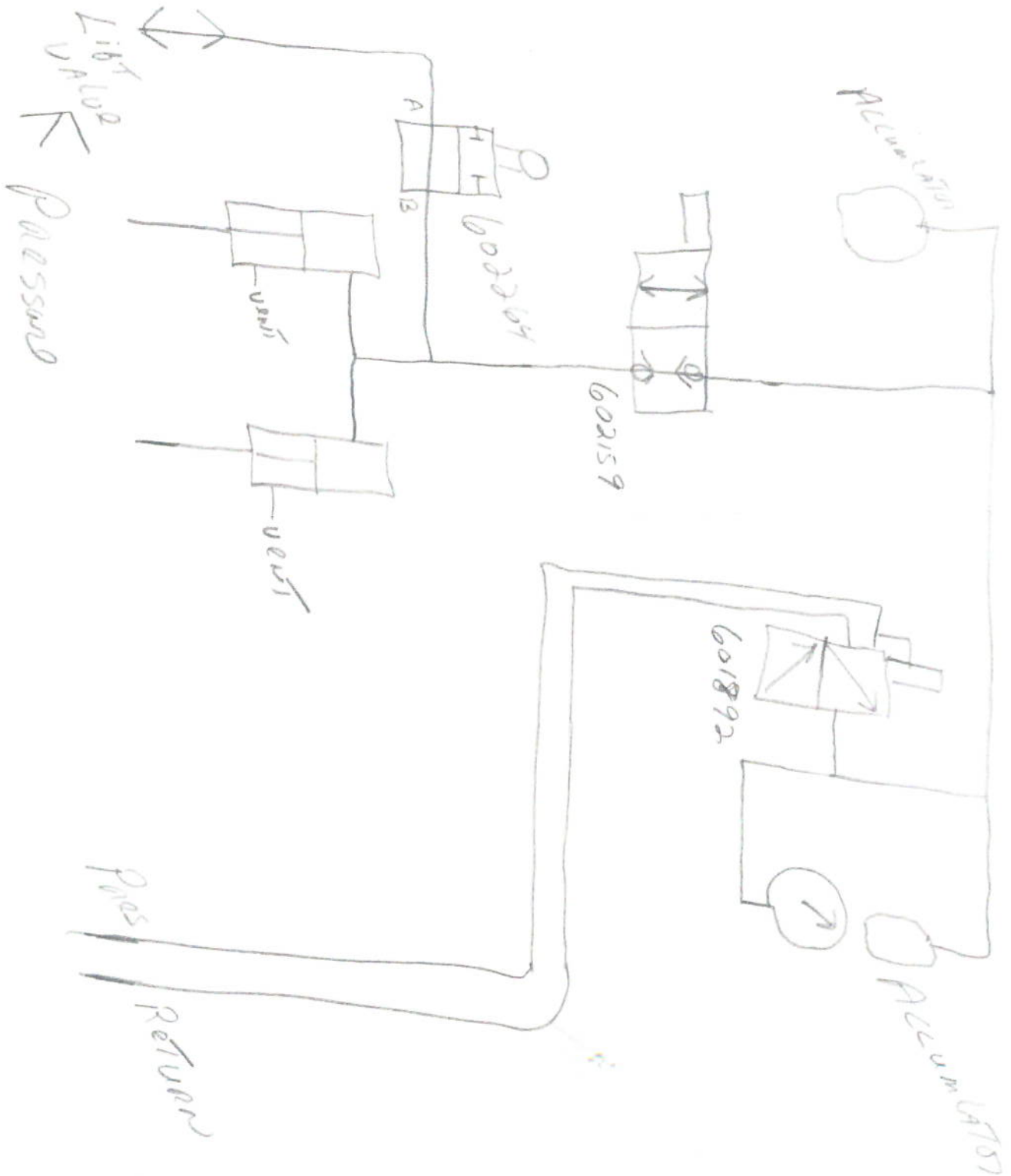


HYDRAULIC FUNCTIONS  
 SAE A 100 N  
 SAE J1939  
 www.sprifer.com

HYDRAULIC FUNCTIONS  
 SAE A 100 N  
 SAE J1939  
 www.sprifer.com

HYDRAULIC FUNCTIONS  
 SAE A 100 N  
 SAE J1939  
 www.sprifer.com

HYDRAULIC FUNCTIONS  
 SAE A 100 N  
 SAE J1939  
 www.sprifer.com



8-1-14 FRI 7:00 AM ← RANDALL

FRI 5:07 ← KEITH

8-2-14 SAT 10:47 GREG ←

SAT 12:19 COZEY →

SAT 7:50 PM ← RANDAL

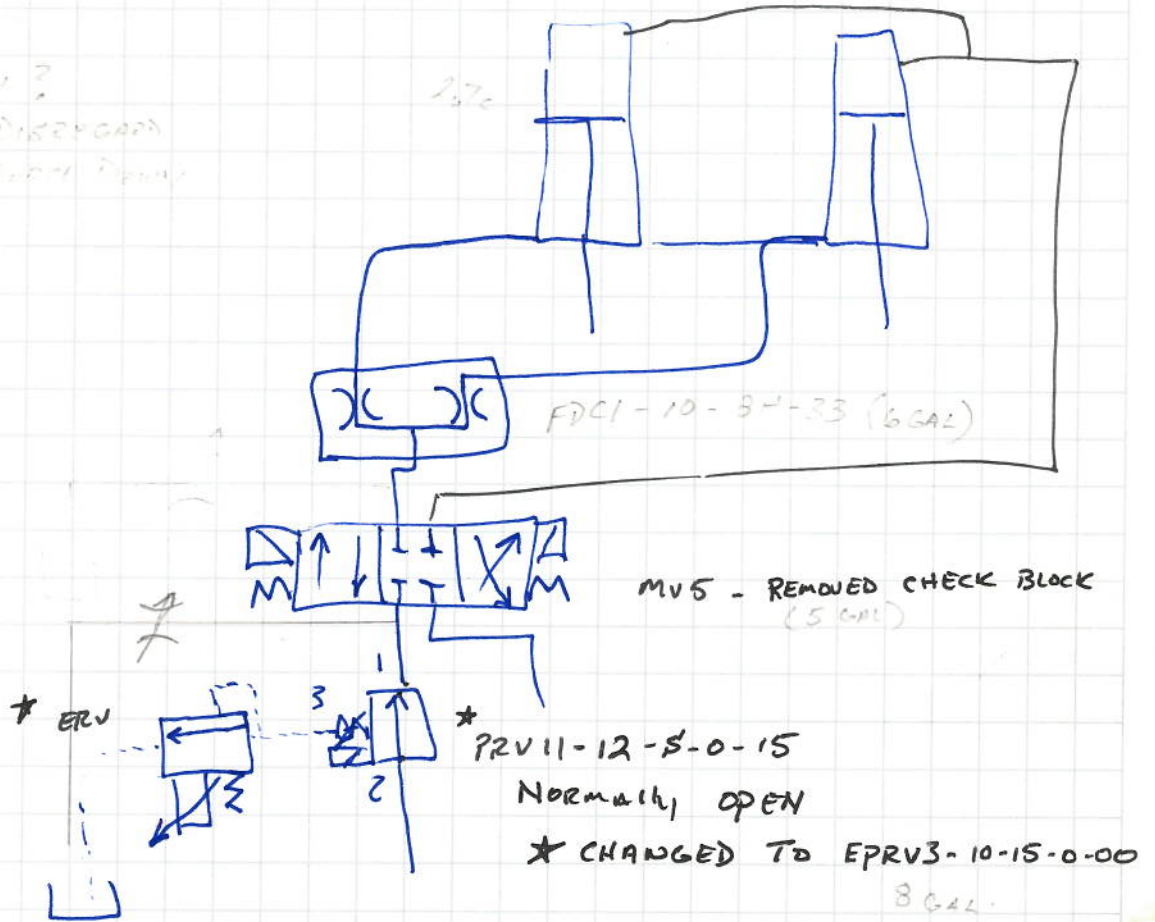
BRIAN CELL 616-540-6823

OFFICE 616 538 3759

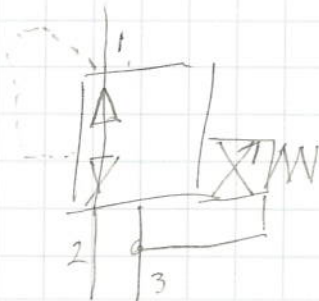
(STAGE 2)

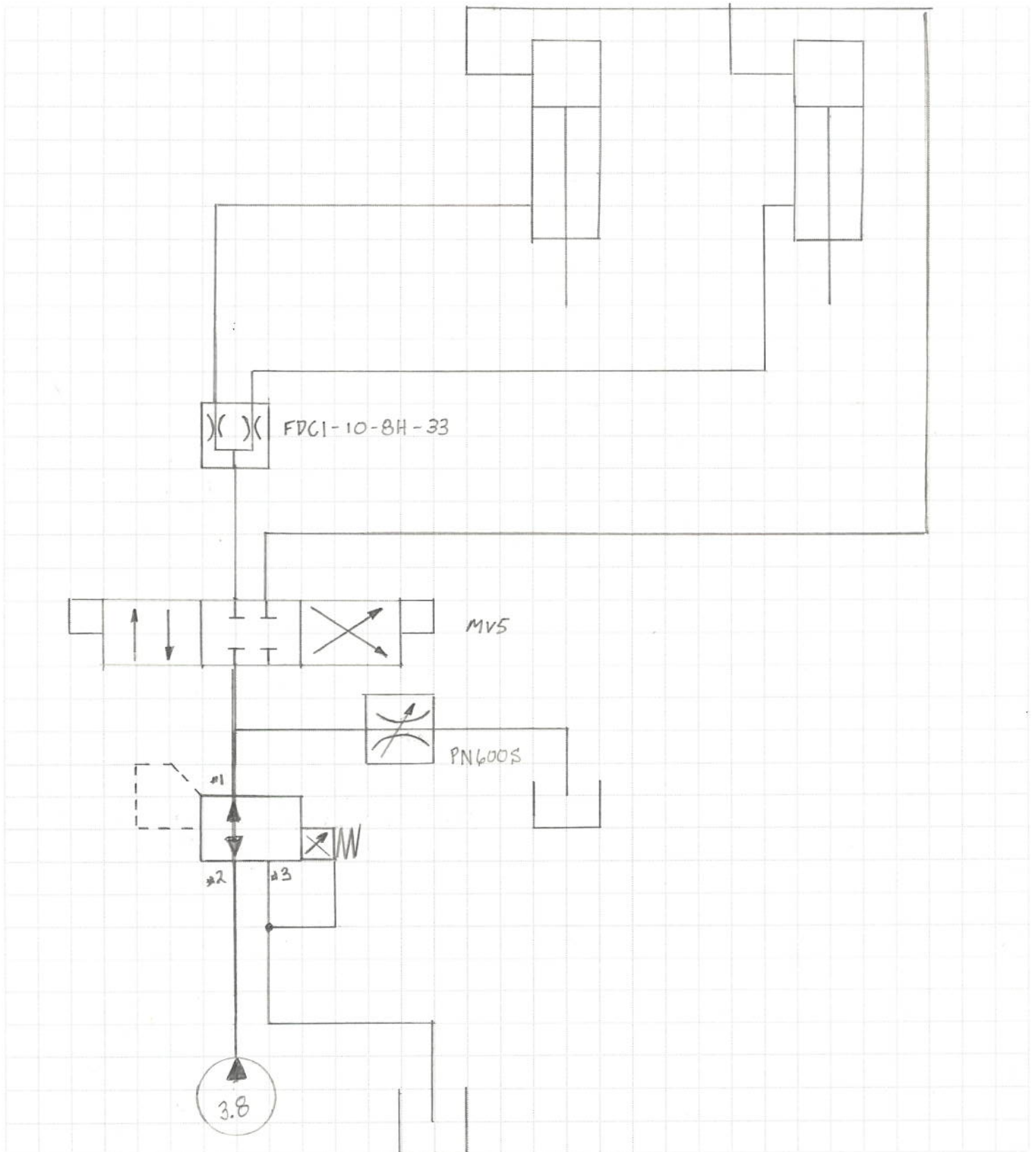
PRESSURE SWITCH ?  
TRANSDUCER MADE - DISREGARD  
SIGNAL MVS. TO EPRV DRAIN

R. BLADE 3" x 16" CYC.



8-28-14 KEVIN  
ADD NEEDLE VALVE  
MAYBE CHANGE FDCI-10-BH-33 TO FDCI-10-BH-66 (12 GAL)





DTS - ILLINOIS  
 2240 LANDMEIER ROAD  
 ELK GROVE VILLAGE, IL 60007  
 PH: 847-758-1705  
 FAX: 847-758-1710

DTS - HEADQUARTERS  
 3560 BUSCH DRIVE  
 GRANDVILLE, MI 49418  
 PH: 616-538-3759  
 FAX: 616-538-3798

DTS - MADISON HEIGHTS  
 31731 SHERMAN DRIVE  
 MADISON HEIGHTS, MI 48071  
 PH: 248-585-9500  
 FAX: 248-585-0855

# Proportional Valves

## Section Overview

This section gives basic specifications for the complete line of Vickers screw-in proportional control valves. Its purpose is to provide a quick, convenient reference tool when choosing proportional valves or when designing a system using these components.

The EPV10 has several outstanding performance features which give it a unique position in the screw-in cartridge valve market. Valve gain linearity, flow force pressure compensation characteristics above 20 bar (300 psi) and low internal leakage.

The EPV16 is a proportionally controlled two-way poppet type valve. The main poppet amplifies a small flow through the pilot circuit and is comparable to a transistor. As the transistor uses small currents to control larger currents, the hydraulic valve transistor or VALVISTOR uses the pilot flow to control the main stage flow with servo-like response flow to control.

The ESV1 is a proportional two-way, pressure compensated, poppet type flow control valve. The valve is available in 8, 10, and 12 sizes, both normally open or normally closed in the de-energized position.

The EPV1 is a proportionally controlled two-way, spool type flow control valve. Technically the valve is not pressure compensated, but it is partial flow force pressure compensated.

The EPV2 is a three port, pressure compensated, proportional flow control valve. The valve can be used as a priority flow regulator, with regulated flow being supplied to port 3 and excess flow being by-passed to port 2. If port 2 is blocked the valve functions as a restrictive, 2 way, pressure compensated flow regulator.

The ERV1-10 is an electric, proportionally controlled, internally pilot operated, spool type screw-in relief valve. It is capable of handling flows from 3,8-60,0 L/min (1-15 USgpm) at pressures from 35-210 bar (500-3000 psi). Also available is an ERV1-16 which is capable of handling flows from 7,6-132 L/min. (2-35 USgpm) at pressures from 35-210 bar (100-500 psi).

The ERV2-10 is a low flow electric proportionally controlled relief valve similar to the ERV1-10. This valve is rated for flows from 0,2-2,8 L/min (0.05-0.75 USgpm) and pressures up to 35 bar (500 psi).

The ERV3-10 is a low flow electric proportionally controlled relief valve similar to the ERV2-10. This valve is rated for flows up to 0,8 L/min (0.20 USgpm) and pressures up to 207 bar (3000 psi).

The EPRV2-8 is an electric, proportionally controlled, direct acting spool type, screw-in pressure reducing/relieving valve. It is capable of handling flows from 0-7.6 L/min (0-2 USgpm) at set pressures from 0-22 bar (0-320 psi).

The EPRV1-10 is an electric, proportionally controlled, internally pilot operated, spool type, screw-in pressure reducing/relieving valve. It is capable of handling flows from 0-7,6 L/min (0-2 USgpm) at set pressures from 14-35 bar (200-500 psi). Also available is an ERV1-16 which is capable of handling flows from 0-38 L/min (0-10 USgpm) at set pressures from 14-35 bar (200-500 psi).

The EPRV3-10 is an electric, proportionally controlled, internally pilot operated, spool type, screw-in pressure reducing/relieving valve. It is capable of handling flows from 0-30 L/min (0-8 USgpm) at set pressures from 35-207 bar (500-3000 psi).

Vickers proportional pressure and flow control valves are designed to be easily controlled by the simplest of DC electrical devices such as a 12 volt battery and a potentiometer.

Varying the voltage at the coil is one of the simplest means of control available. Any of the Vickers DC coils will work on most of these valves simply by varying the voltage between 0 and 75% of the rated coil voltage. It should be noted that as the operating temperature of a coil increases, the solenoid force decreases. Therefore if the voltage is held constant as the coil heats up then valve pressure (or flow) will change.

The IRV1 is a proportionally controlled poppet type, relief valve, with an inverse function. This valve is capable of handling flows up to 1 L/min (0.25 USgpm) and pressures up to 210 bar (3000 psi).

Electrical current controls with PWM are recommended for all Eaton proportional valves.

Closed-loop electrical control with feedback from the parameter to be monitored will provide the most accurate control.

### Valve Features and Benefits

- Products in this catalog have been fatigue tested to one million cycles at 132% or 10 million cycles at 115% of rated pressure
- All operating parts are hardened steel, ground and honed for long life and low leakage
- Designed for maximum flexibility and minimal space requirements
- All exposed cartridge surfaces are zinc dichromate plated to resist corrosion
- Reliable, economical and compact
- Rated flows up to 160 L/min (42 USgpm)

- Optional nose-in, side-out or side-in, nose out flow direction (EPV16 series)

### Coil Features and Benefits

The valves in this catalog are offered with a choice of two or three standard voltages and several types of electrical connections. For other coil ratings and connections, consult your Eaton applications engineer.

- Variety of voltages and terminations
- Coils are interchangeable for serviceability on the EPV10 and EPV16. Coils are interchangeable for serviceability on the ERV1-10, EPV1-16, EPRV1-10 and EPRV1-16
- Compact, one-piece weather-proof encapsulated design. Eliminates need for extra seals
- An arc suppression diode molded into the coil is available as a standard option on ERV, EPRV and EPV valves

### Fluid Cleanliness

Proper fluid condition is essential for long and satisfactory life of hydraulic components and systems. Hydraulic fluid must have the correct balance of cleanliness, materials, and additives for protection against wear of components, elevated viscosity, and inclusion of air.



#### WARNING

Application of these products beyond published

performance specifications may cause valve malfunction which may result in personal injury and/or damage to the machine.

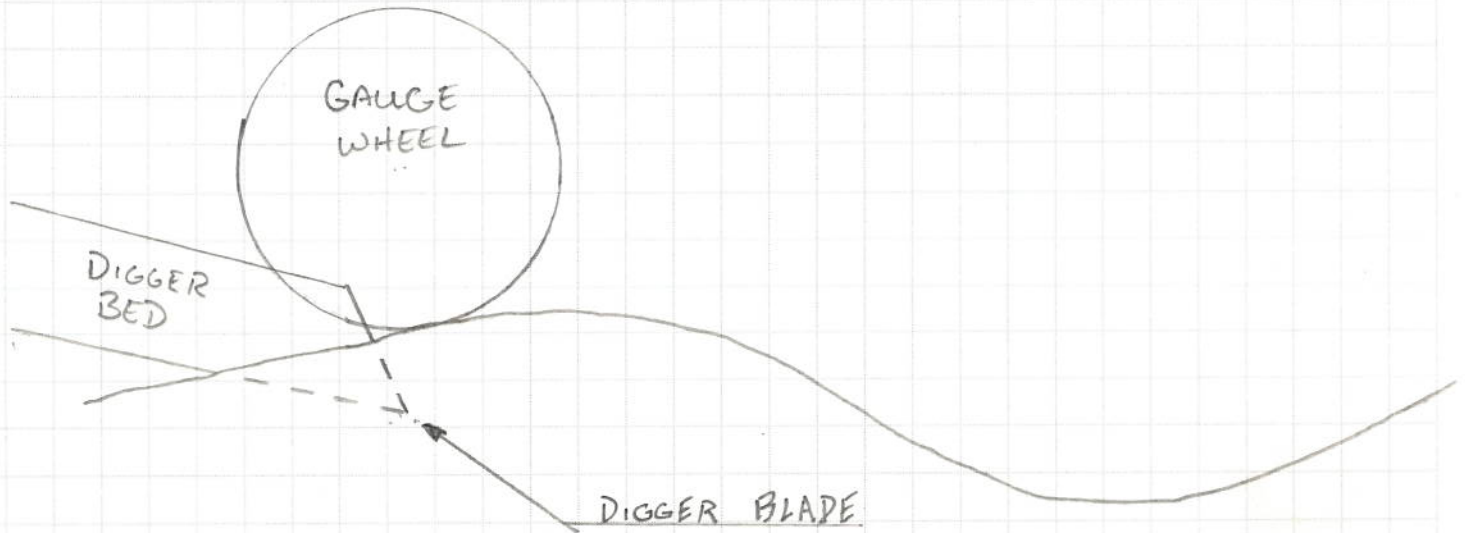


#### WARNING

For pressures over 210 bar (3000 psi) use steel housing.

B



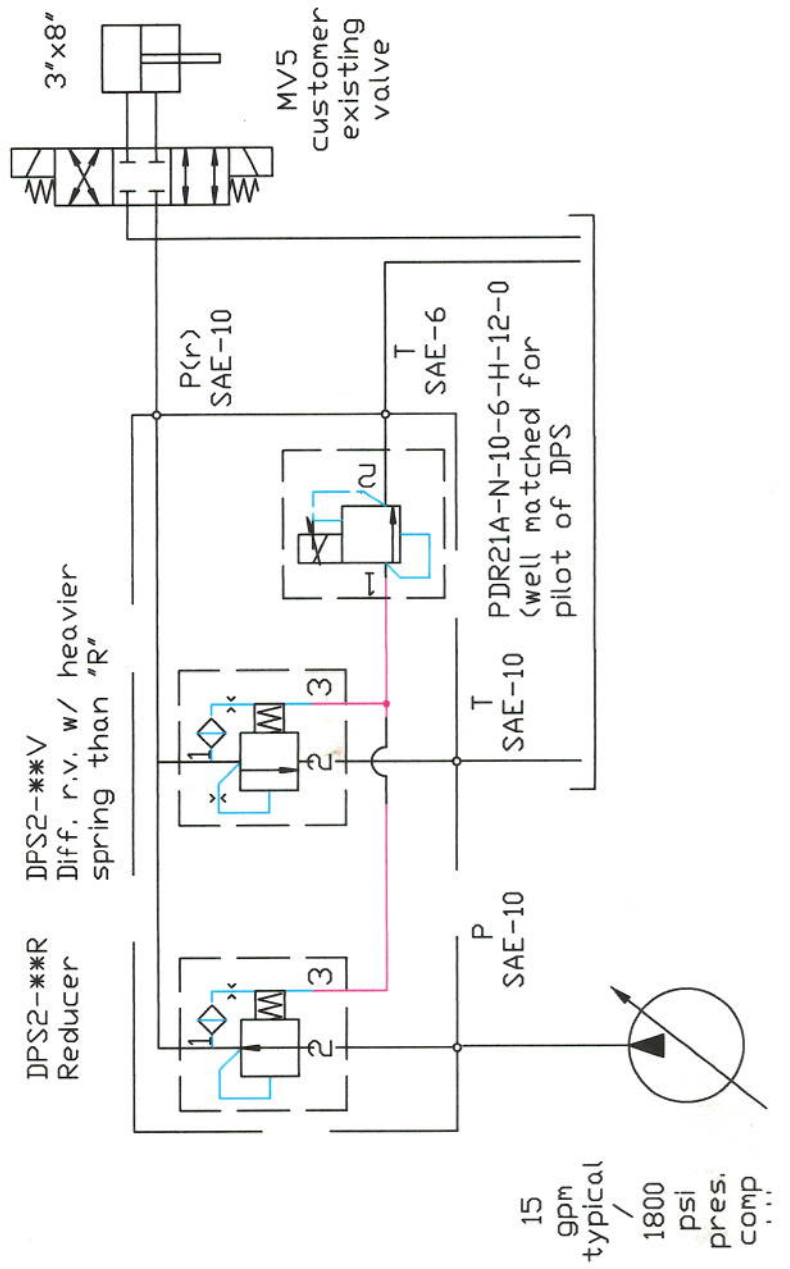


GAUGE WHEEL ADJUSTS HYDRAULICLY FOR AMOUNT OF DIRT CARRIED UP THE DIGGER BED.

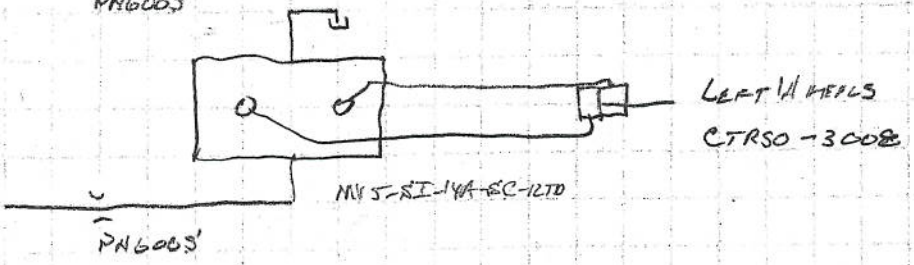
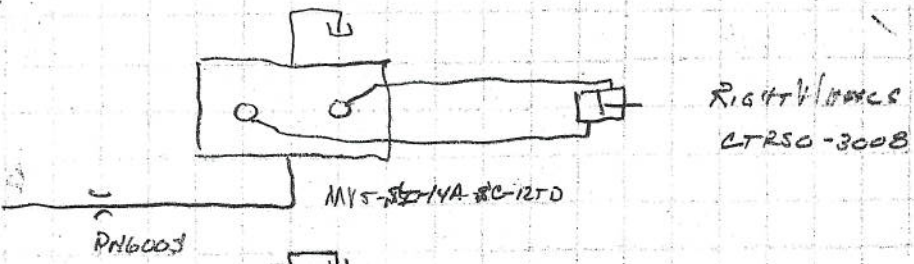
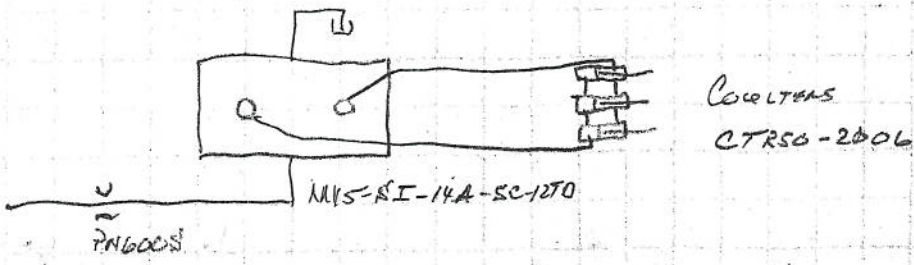
GAUGE WHEEL CYLINDER IS MOUNTED ON "SUB FRAME" OF DIGGER BED.

DIGGER BED HEIGHT IS CONTROLLED BY (2) CYLINDERS, (1 ON EACH SIDE)

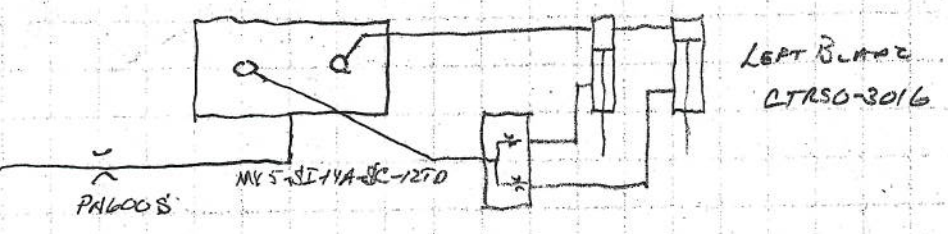
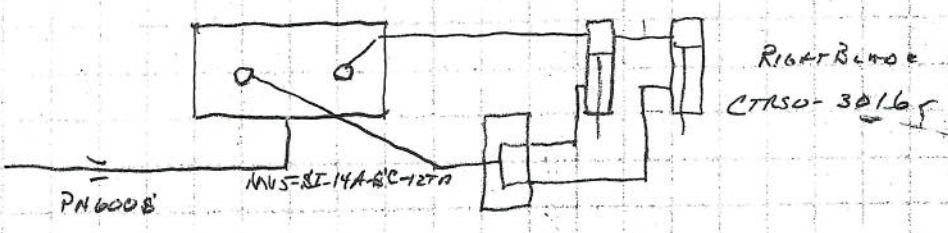
CUSTOMER WANTS DIGGER BED TO MAINTAIN THE SAME DEPTH AT ALL TIMES.



6/26/14  
#10041  
MANQUATTIANS  
BROWN



★ SEE ALTERNATE DRAWING FOR DIGGER BED





# INVOICE

## Advanced Farm Equipment LLC

5773 Crystal Road  
Vestaburg MI 48891  
(989) 268-5711

Invoice Number 043300

Invoice Date 09/15/14

Page 1

SOLD TO H J V Farm Equipment  
5900 County Road #10  
RR #2  
Alliston, ON L9R 1V2 CANADA

SHIP TO Marquart Bros. LLC  
6241 Route 19  
Gainesville NY 14066

*RETURNED*

P.O. Number	RJ557709	Terms	Net 30
Customer Code	HJVANFMEQ	Due Date	10/15/2014
Salesperson	Greg Merrihew	Shipment Method	UPS - Red

ITEM	ORDERED	SHIPPED	DESCRIPTION	PRICE	UOM	AMOUNT	TAX
	1.000	1.000	Marquart Terra Float Controllr	0.000	n/a	0.00	
2022-0534	T810-26A-U-N-00 2.000	2.000	H/F PROPORTIONAL RELIEF	99.315	ea	198.63	
2022-0535	4303712 2.000	2.000	H/F COIL 10 SIZE 12V ER DTSCHE	19.340	ea	38.68	
2022-0536	ER10-830-O-N 2.000	2.000	H/F LOGIC VLV	45.830	ea	91.66	
2022-0537	EP10-835-O-N-40 2.000	2.000	H/F PILOTED LOGIC ELEMENT	34.900	ea	69.80	
2022-0538	566413 4.000	4.000	30472A8 VALVE BODY	32.088	ea	128.35	
2022-0539	DTS-30103 1.000	1.000	HFX A 40 PIN HARNESS 3FT	127.050	ea	127.05	
2022-0541	566151 2.000	2.000	C-10-2 BODY	21.015	ea	42.03	
2022-0542	102EC21700A 1.000	1.000	HFX48m-PRG CNTRLR HI-PRF	1,435.540	ea	1,435.54	
2022-0543	DTS-30104-BLANK 1.000	0.000	HFX 'B' PLUG W/ 40 CAVITY SLS	74.030	ea	0.00	
			SHIPPING DIRECT				
2022-0544	1.000	1.000	Engineering Charge	528.000	ea	528.00	
6804-06	4.000	4.000	3/8" JIC x 3/8" Oring Tee	5.720	each	22.88	
6801-08-06	4.000	4.000	1/2" JIC x 3/8" Oring	10.693	each	42.77	
6400-06-04	4.000	4.000	3/8" JIC x 1/4" Oring	1.385	each	5.54	
6400-06-06	2.000	2.000	3/8" JIC x 3/8" Oring	1.165	each	2.33	
6400-08-06	2.000	2.000	1/2" JIC x 3/8" Oring	2.355	each	4.71	
2001-0278	DT06-28 2.000	2.000	2 Pin Plug	1.220	ea	2.44	
2001-0124	1062-14-0122-PS 6.000	6.000	Contact Socket 14-16 AWG	0.537	ea	3.22	
2001-0279	W28 2.000	2.000	Wedge Lock For 2 Pin Plug	0.185	ea	0.37	
			Freight Charges			84.28	

1- 2022-0529 PRV11 (USED)  
1- 2022-0528 ERV1 (USED)

Subtotal	2,828.28
*Sales Tax	0.00
Invoice Total	2,828.28
Payments	0.00
Net Due	2,828.28

# INVOICE

## Advanced Farm Equipment LLC

5773 Crystal Road  
 Vestaburg MI 48891  
 (989) 268-5711

Invoice Number 042962

Invoice Date 08/21/14

Page 1

SOLD H J V Farm Equipment  
 TO 5900 County Road #10  
 RR #2  
 Alliston, ON L9R 1V2 CANADA

SHIP Marquart Bros. LLC  
 TO 6241 Route 19  
 Gainesville NY 14066

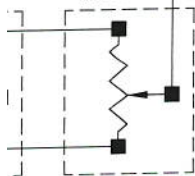
P.O. Number	Warrenty	Terms	Net 30
Customer Code	HJVANFMEQ	Due Date	09/20/2014
Salesperson	Greg Merrihew	Shipment Method	UPS - Saturday

ITEM	ORDERED	SHIPPED	DESCRIPTION	PRICE	UOM	AMOUNT	TAX
6400-08-08	4.000	4.000	1/2" JIC x 1/2" Oring	0.000	each	0.00	
2022-0190 <i>AT6 566162</i>	2.000	2.000	Pressure Reducer Body	0.000	ea	0.00	
2022-0474 <i>2005B</i>	2.000	2.000	C-10-2 Body W/SAE #8 Ports	0.000	ea	0.00	
2022-0532 <i>EPRV3-10-15 -0-00</i>	2.000	2.000	Proportional Pressure Reducing Valve 1500 Max Reduced Pressure	0.000	ea	0.00	
2017-11105 <i>8V1-10-C-0-00</i>	2.000	2.000	Normally Closed Solenoid Cartr	0.000	each	0.00	
2017-11001	2.000	0.000	12V DC Hirschmann Coil	0.000	ea	0.00	
6400-08-06	2.000	2.000	1/2" JIC x 3/8" Oring Shipped from DTS	0.000	each	0.00	

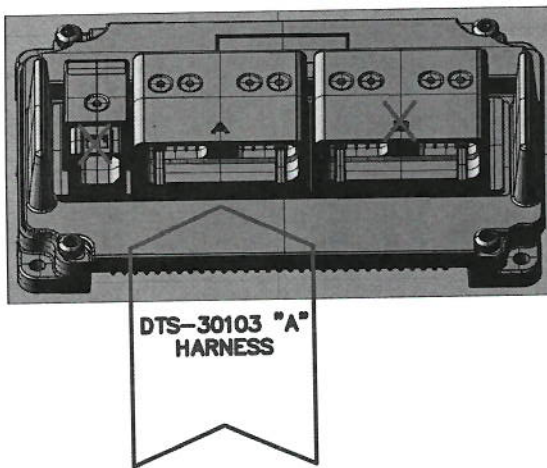
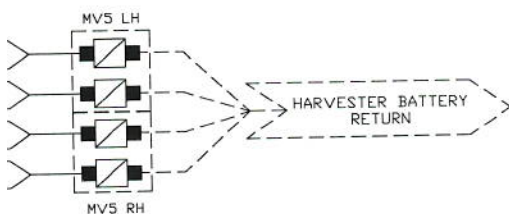
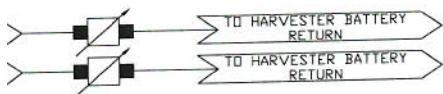
Subtotal	.00
*Sales Tax	0.00
Invoice Total	0.00
Payments	0.00
Net Due	0.00



NOTE: 1  
RH POT.  
FLOAT  
PRESS  
ADJUST.



*DT06-2S + two sockets each + wedge*



----- = EXISTING DEVICE  
PREVIOUSLY  
SUPPLIED

NOTE: 1 WIRE SO  
THAT TURNING KNOB  
C.W. INCREASES  
VOLTAGE MEASURED  
ON WIPER