

HarV.

Horse Radish

Elec.

HRSP HORSE RADISH HARV.

9/22/00

## FINAL PANEL WIRING

BLACK	34	LEFT WORK LIGHTS TO RELAY
BLACK	60	LB4 TO CROSS SPX "COMMON"
BLUE	36	RIGHT WORK LIGHTS TO RELAY
PURPLE	94	ROAD LIGHTS TO RELAY
BLACK	1	4X4 RELAY #86
RED	2	START RELAY #87 TO START SOLENOID
RED/BLUE	18	TACHOMETER SENSOR TO GROUND
BLUE/BLACK	8	CB4 TO GROUND DRIVE FILTER #1
BLUE/RED	13	5T87 IGNITION SIDE TO FUEL SHUT OFF SOLENOID
YELLOW/ORANGE	25	CB4 TO HYDRAULIC OIL LEVEL SENSOR
BROWN	6	BACK UP LIGHTS TO RELAY #30
RED	11	5T87 HOT SIDE
RED	13	5T87 IGNITION SIDE
BROWN	502	TURN STAT
WHITE	10F	START RELAY #30

# 4RSP HORBERADISH HARU MASTER # B

9/25/00

## LEFT

BLACK	34	LEFT WORK LIGHTS	P
RED	70	FRONT STAR ROLLS RDRS ACTUATOR	21(1)
PURPLE	69	FRONT STAR ROLLS RDRS ACTUATOR	22(1)
BROWN	153	LEFT PRIMARY REVERSE	1(2)
BROWN	46	REAR STAR ROLLS RDRS ACTUATOR	16(1)
GREEN	45	REAR STAR ROLLS RDRS ACTUATOR	17(1)
YELLOW	53	LEFT TURN	8(2)

## RIGHT

BROWN	54	RIGHT TURN	7(2)
YELLOW	33	REAR VIBRATOR RDRS ACTUATOR	19(1)
RED	32	REAR VIBRATOR RDRS ACTUATOR	20(1)
PURPLE	94	ROAD LIGHTS	P
RED	81	FUEL PUMP	12(1)
RED	149	SECONDARY RDRS ACTUATOR	29(2)
YELLOW	150	SECONDARY RDRS ACTUATOR	30(2)
WHITE	61	CROSS SPX 'N.O.'	23(2)
BLACK	60	CROSS SPX 'COM'	P
ORANGE	154	RIGHT PRIMARY REVERSE	2(2)
BLUE	36	RIGHT WORK LIGHTS	P
BLUE	26	FRONT VIBRATOR RDRS ACTUATOR	15(1)
WHITE	27	FRONT VIBRATOR RDRS ACTUATOR	14(1)

9/25/00

## COLUMN #5 PLUG

RED	11	STBY HOT SIDE	1	P	BRAKE SMX PRESSURE SWITCH
RED	12	KEY SWITCH ACC POSITION			1 12VDC RED 0015
RED	13	STBY IGNITION	3	P	2 N.C.
BROWN	502	TURN ST AT 502(4) TO 507(9)	4	P	3 N.O. RED 15
WHITE	164	CLUTCH SWITCH N.C. TO RELAY	5	P	
BLACK	059	CLUTCH SWITCH N.O.	14	SC(2)	SOLENOID VALVE
BROWN	54	RIGHT TURN	18	7(2)	1 12VDC
YELLOW	53	LEFT TURN	20	8(2)	2 $\frac{1}{2}$
RED 0015		CLUTCH SWITCH N.O. TO SMX TO CLUTCH SOL 5V4-100 RED 15	15		

## REAR STEERING

BLUE	55	TO STEERING BOX RELAY	14(4)
ORANGE	56	TO STEERING BOX RELAY	16(4)
PURPLE	83	TO STEERING BOX RELAY	24(1)
RED	120	RELAY TO MV4	
YELLOW	121	RELAY TO MV4	

## REAR

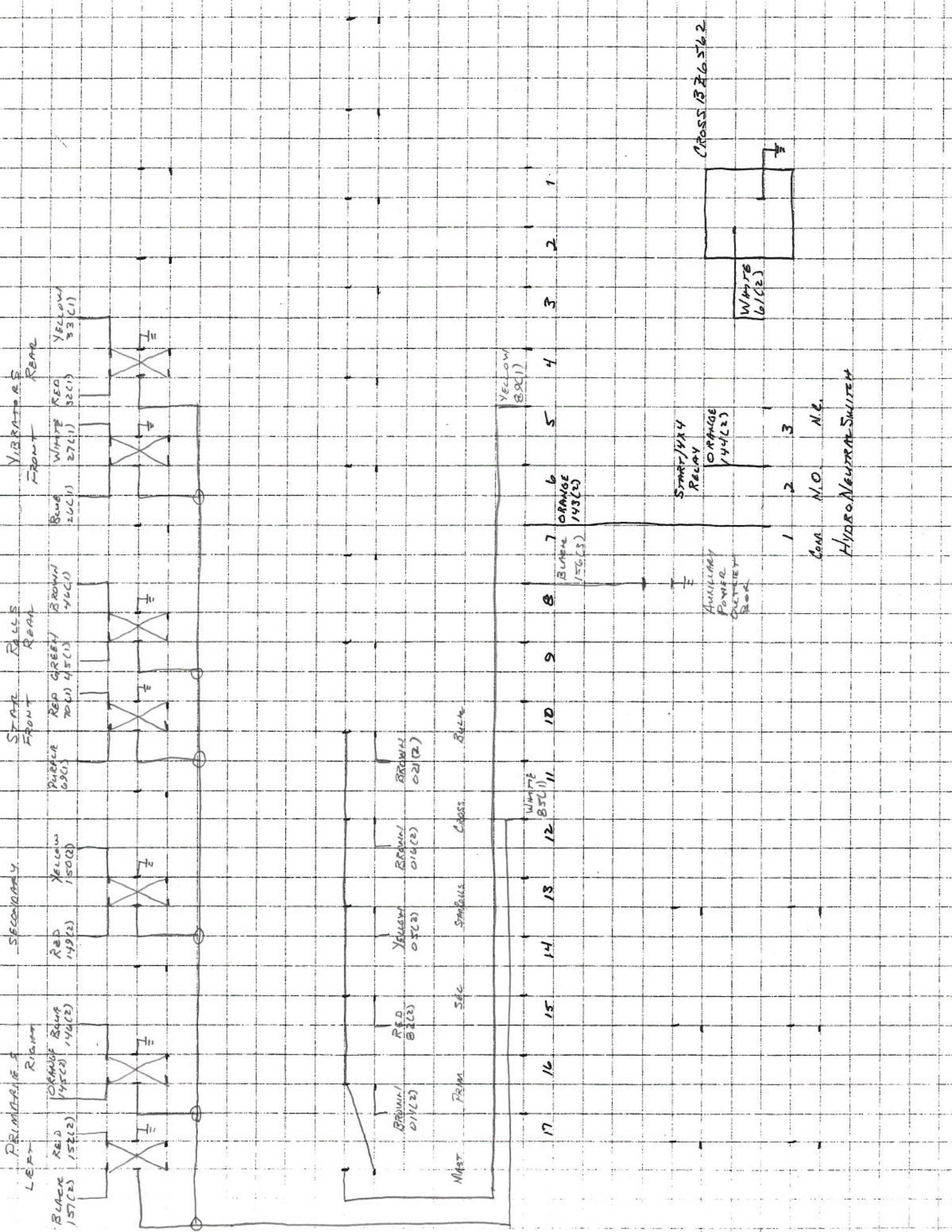
BROWN	54	RIGHT TURN	7(2)
YELLOW	53	LEFT TURN	8(2)
RED	82	SECONDARY	18(2)
WHITE	58	FUEL GAUGE SENDER	11(3)
BROWN	128	PRIMARY CIRCUIT TEMPERATURE SENDER	36(2)
ORANGE	145	RIGHT PRIMARY PUMP ACTUATOR	31(2)
BLUE	146	RIGHT PRIMARY PUMP ACTUATOR	32(2)
BLACK	151	LEFT PRIMARY PUMP ACTUATOR	35(2)
RED	152	LEFT PRIMARY PUMP ACTUATOR	37(2)
RED	0015	CLUTCH SWITCH N.O. TO SMX COM.	15(2)
RED	15	SMX SWITCH N.O. TO CLUTCH SOL 5V4	

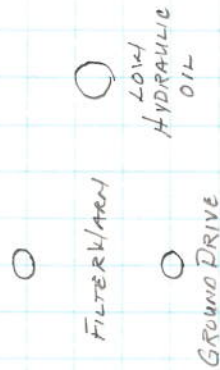
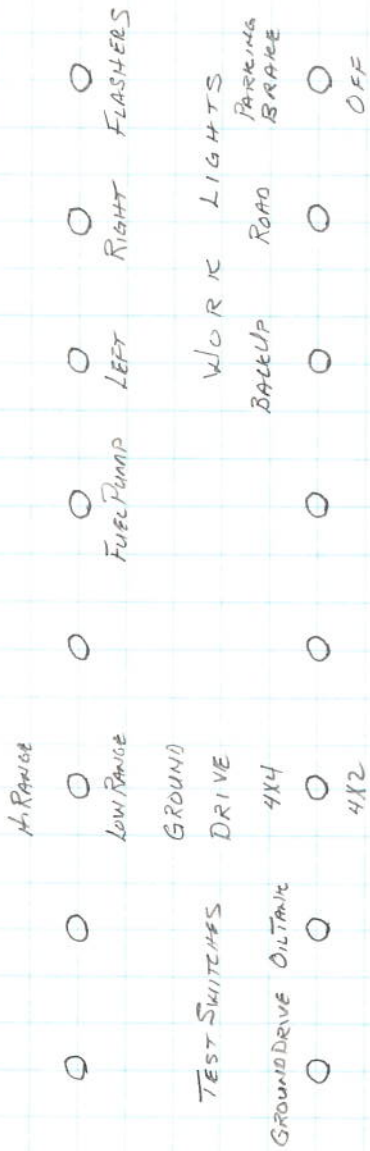
S O E E P C O N T R O L S  
 PRIMARY STAR ROLLS VIBRATOR  
 0 0 0 0 0 0 0 0 0 0 0 0 0 0 0  
 LEFT RIGHT SEC FRONT REAR

CONVEYOR CIRCUITS

0 0 0 0 0 0 0 0 0 0 0 0 0 0 0  
 MASTER PRIM SEC STAR ROLLS CROSS BULK

0 0 0 0  
 0 0 0 0







9/22/00

FUEL PUMP

WIPER LIGHTS LEFT

RIGHT

FLASHER

2-SPEED

BLACK 012(2)

YELLOW 53(2)  
BROWN 54(2)

FLASHER SWAY  
YELLOW 52(1)

BLACK 050(2)  
BLACK 0017(2)

BLUE 036(2)

PURPLE 091(2)

ROTOR

BROWN 051(2)

BLACK 410

GREEN 291(1)

ORANGE 90(1)

BLACK 017(1)

TORN SWAY  
BROWN 502(5)

RED 81(1)

BLACK 034(2)

BLUE 036(2)

YELLOW 53(2)  
BROWN 54(2)

BLACK 012(2)

YELLOW 020(2)

RED 051(1)

BROWN 058(1)

4 1/2 4 1/2

HYDOL TANK

GRD DRIVE

1

1

1

1

1

1

1

1

1

1

1

1

1

1

BLACK 0012(1)

BLACK 012(2)

YELLOW 020(2)

RED 051(1)

BROWN 058(1)

GRD DRIVE

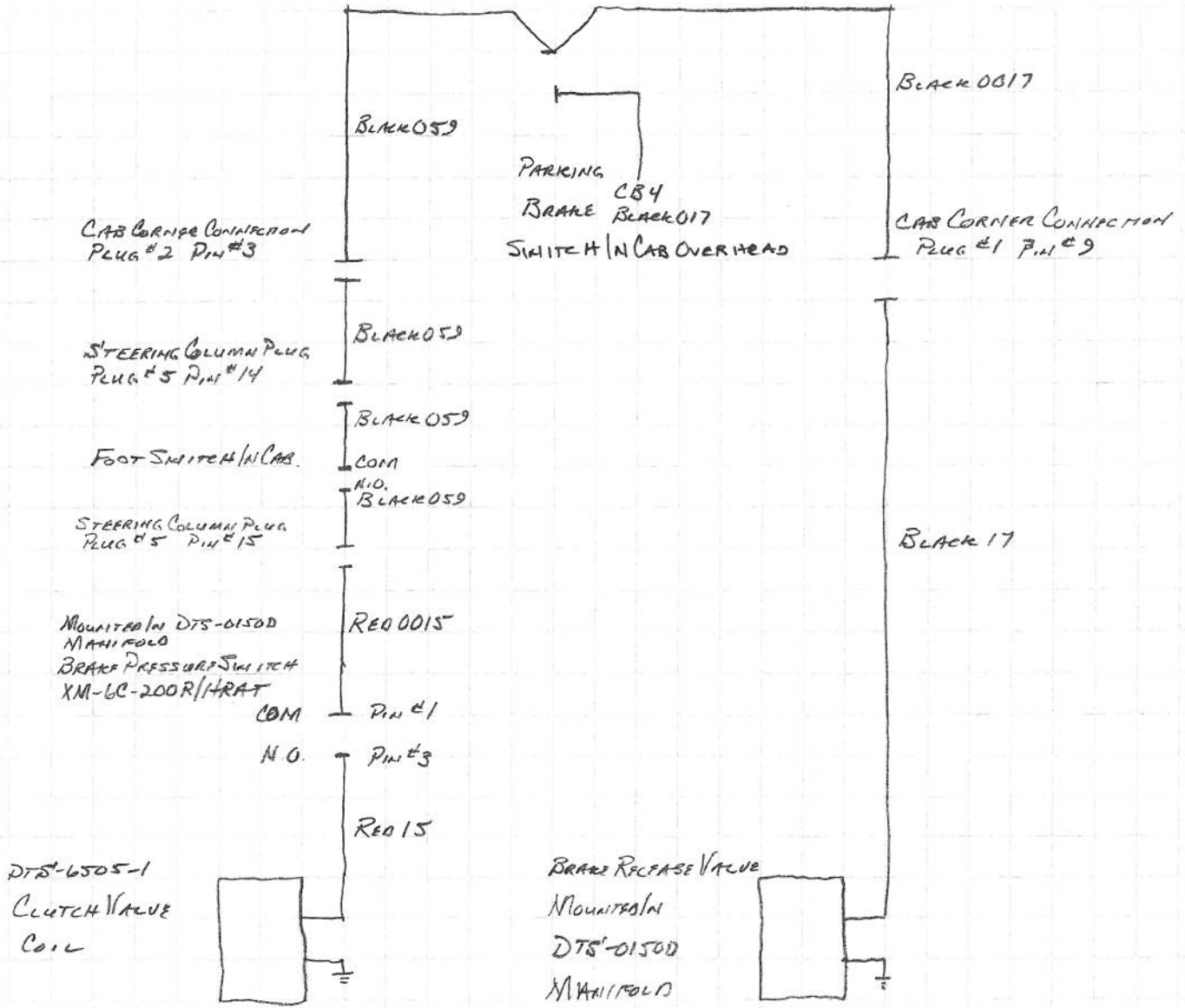
GRD DRIVE

DIA-0150 L  
WIRE LENGTH 13'6"  
LAB OVERHEAD

H.O.O.L.  
TANKS LEVEL

GRD DRIVE

# PARKING BRAKE ELECTRICAL CIRCUIT 1998 TO DATE



9/22/00

## PLUG #1

Pin	1	YELLOW	92	CB1 TO HAZARD STAT TO SWITCH	
	2	GREEN	91	CB2 TO RIGHT WORK LIGHT SWITCH	
	3	ORANGE	90	CB3 TO LEFT WORK LIGHT SWITCH	
	4	BLACK	017	CB4 TO BRAKE, WARNING, SPEEDOMETER	
	5	RED	081	CB10 TO FUEL PUMP SWITCH	
	6	YELLOW	89	CB5 TO MASTER SWITCH	
	7	YELLOW	42		
	8	BLACK	0012	CB7 TO 2 SPEED	
	9	BLACK	0017	BRAKE SWITCH TO BRAKE SOLENOID	BLACK/BLUE 17
	10	BROWN	88	CB11 TO ROAD-BACKUP RELAYS/SWITCH	
	11	WHITE	85	CB12 TO ACTUATOR SWITCHES	
	12	RED	81	FUEL PUMP SWITCH TO FUEL PUMP	
	13	WHITE	43		
	14	WHITE	27	FRONT VIBRATOR SWITCH TO RDRS ACTUATOR	
	15	BLUE	26	FRONT VIBRATOR SWITCH TO RDRS ACTUATOR	
	16	BROWN	46	REAR STAR ROLLS SWITCH TO RDRS ACTUATOR	
	17	GREEN	45	REAR STAR ROLLS SWITCH TO RDRS ACTUATOR	
	18	RED	44		
	19	YELLOW	33	REAR VIBRATOR SWITCH TO RDRS ACTUATOR	
	20	RED	32	REAR VIBRATOR SWITCH TO RDRS ACTUATOR	
	21	RED	70	FRONT STAR ROLLS SWITCH TO RDRS ACTUATOR	
	22	PURPLE	69	FRONT STAR ROLLS SWITCH TO RDRS ACTUATOR	
	23	RED	52	CB16 TO FOOT SWITCHES 12VDC	
	24	PURPLE	83	FOOT SWITCHES TO STEERING BOX	

9/22/00

## PLUG #2

PIN 1	BROWN	153	LEFT PRIMARY REVERSE	
2	ORANGE	154	RIGHT PRIMARY REVERSE	
3	BLACK	059	PARK SWITCH TO 14(S)/15(S) RED 0015 TO SMX/RED 15 TO S114-10-0	
4	RED/ORANGE	23	HYDRAULIC OIL TEMPERATURE SENSOR TO CAB	YELLOW 752
5	RED/BLACK	07	TACHOMETER SENSOR TO CAB	DARK GREEN 602
6				
7	BROWN	54	RIGHT TURN SIGNAL	
8	YELLOW	53	LEFT TURN SIGNAL	
9	BROWN	06	BACK UP LIGHT SWITCH TO RELAY	
10	BLUE	036	RIGHT WORK LIGHT SWITCH TO RELAY	
11	BLACK	034	LEFT WORK LIGHT SWITCH TO RELAY	
12	BLACK	01	4X4 SWITCH TO RELAY	
13	BLACK/RED	012	2 SPEED SWITCH TO SOLENOID	
14	BROWN/BLUE	021	BULK LOADER SWITCH TO SOLENOID	
15	BROWN/BLACK	011	PRIMARY SWITCH TO SOLENOID	
16	YELLOW	05	STAR ROLLS SWITCH TO SOLENOID	
17	BROWN/RED	016	CROSS CONVEYOR SWITCH TO SOLENOID	
18	RED	82	SECONDARY SWITCH TO SOLENOID	
19	BROWN	47		
20	BLUE	48		
21	BLUE	03	GROUND DRIVE HIGH PRESSURE FILTER #5 TO LIGHT	
22	YELLOW/BLUE	020	HYDRAULIC LEVEL SENSOR TO CAB (BZL-12)	
23	WHITE	61	CROSS CONVEYOR PRESSURE SWITCH N.O. TO CAB (BZL62)	
24				
25	ORANGE	143	CB7 TO HYDRO NEUTRAL SWITCH #1	
26	ORANGE	144	HYDRO NEUTRAL SWITCH #2 TO PANEL RELAY	
27	PURPLE	094	ROAD LIGHT SWITCH TO RELAY	
28	GREEN	607	DTS-0160 TO CAB SPEEDOMETER	GREEN 607
29	RED	149	SECONDARY SPEED SWITCH TO RDRS ACTUATOR	
30	YELLOW	150	SECONDARY SPEED SWITCH TO RDRS ACTUATOR	
31	ORANGE	145	RIGHT PRIMARY PUMP ACTUATOR	
32	BLUE	146	RIGHT PRIMARY PUMP ACTUATOR	
33				
34				
35	BLACK	151	LEFT PRIMARY PUMP ACTUATOR	
36	BROWN	123	TEMPERATURE SENSOR DTS-0198 TO CAB (BZL-12)	GREEN 425
37	RED	152	LEFT PRIMARY PUMP ACTUATOR	

9/25/00

PLUG #	H	PIN	1	2			
			RED		CR7 TO PIN 40 ON GAUGE PANEL		
SIN 1		2	BLACK	BLACK	STAR RED MVS	BLACK	108
	1	3	RED	RED	STAR RED MVS	RED	109
	2	4	ORANGE	ORANGE		ORANGE	110
	2	5	BLUE	BLUE		BLUE	111
	3	6	BLACK/WHITE	YELLOW	BOOM MID MVS	WHITE	112
	3	7	RED/WHITE	BROWN	BOOM MID MVS	BROWN	113
	4	8	BLUE/WHITE	VIOLET	BOOM OUTER MVS	PURPLE	114
	4	9	GREEN/WHITE	GRAY	BOOM OUTER MVS	GREEN	115
	5	10	ORANGE/BLACK	WHITE/BROWN	BOOM LIFT MVS	YELLOW	116
	5	11	BLUE/BLACK	WHITE/BLACK	BOOM LIFT MVS	BROWN	117
	6	12	RED/BLACK	WHITE/RED	BLADE MVS	RED	118
	6	13	GREEN/BLACK	WHITE/YELLOW	BLADE MVS	BLACK	119
		14	BLUE	55	LEFT CRAS FOOT SWITCH TO STEERING BOX RELAY		
		15					
		16	ORANGE	56	RIGHT CRAS FOOT SWITCH TO STEERING BOX RELAY		

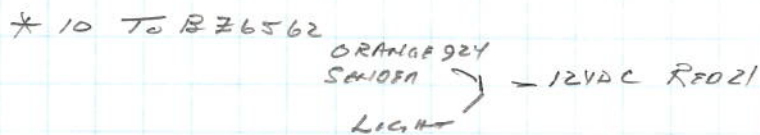
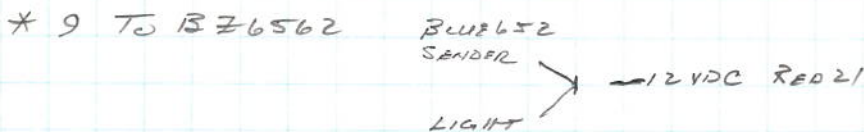
9/25/00

### Column 25 Plug

Pin	1	RED	11	STBY Hot Side Terminal	
	2	RED	12	KEY SWITCH ACC POSITION	
	3	RED	13	STBY IGNITION TERMINAL'S	
	4	BROWN	502	POWER FROM TURN STAT	502(4) TO 507(9)
	5	WHITE	104	TO CLUTCH SWITCH N/C TO RELAY	
	14	BLACK	059	TO CLUTCH SWITCH N.O TO 15CS1	
	15	RED	0015	TO EMX SWITCH COM / N.O. ON EMX (RED 15) TO SV4-10-0	
	18	BROWN	522	RIGHT TURN SIGNAL / BROWN 54 ON MACHINE	522(10) TO 522(18)
	20	BROWN	523	LEFT TURN SIGNAL / YELLOW 53 ON MACHINE	523(12) TO 523(20)

### GAUGE PANEL

Pin	1	ENGINE OIL PRESSURE	PURPLE 705 TO ORANGE/RED 14
	2	GROUND	BLACK 20 TO GROUND
	3	INTERNAL LAMP	BROWN 526 (PRE 1998) BROWN 503
	4	IGNITION / BATTERY	RED 21 TO CB7
	5	ENGINE TEMPERATURE GAUGE	GREEN 617 TO ORANGE 4
	6	FUEL GAUGE	BLUE 652 TO WHITE 58
	7		
	8		
*	9	ENGINE WATER TEMPERATURE LIGHT	BLUE 653 TO ORANGE/BLACK 9
*	10	ENGINE OIL PRESSURE LIGHT	ORANGE 924 TO ORANGE/BLUE 19



9/25/00

BLACK	1	4X4 SWITCH TO RELAY	PANEL
	12	RED 2 SPEED SWITCH TO SOLENOID	13 (2)
	17	BLUE BRAKE SWITCH TO BRAKE SOLENOID	9 (1)
	22	ORANGE	
RED	2	START RELAY TO STARTER SOLENOID	PANEL
	7	BLACK TACHOMETER SENSOR TO CAB	5 (2)
	18	BLUE TACHOMETER SENSOR TO GROUND	PANEL
	23	ORANGE HYDRAULIC OIL TEMPERATURE SENSOR TO CAB	4 (2)
BLUE	3	GROUND DRIVE FILTER #3 TO CAB	21 (2)
	8	BLACK GROUND DRIVE FILTER #1 TO PANEL CR 4	PANEL
	13	RED ST BT IGNITION SIDE TO FUEL SHUT OFF SOLENOID	PANEL
	24	ORANGE A/C PLUG (ORANGE 224) TO A/C CLUTCH	
ORANGE	4	ENGINE WATER TEMPERATURE SENDER TO GAUGE	13 (3)
	9	BLACK ENGINE WATER TEMPERATURE SENSOR TO LIGHT	12 (3)
	14	RED ENGINE OIL PRESSURE SENDER TO GAUGE	3 (3)
	19	BLUE ENGINE OIL PRESSURE SENSOR TO LIGHT	9 (3)
YELLOW	5	STAR ROLLS SOLENOID	16 (2)
	10	BLACK	
	15	RED	
	20	BLUE HYDRAULIC OIL LEVEL SENSOR TO CAB	22 (2)
	25	ORANGE HYDRAULIC OIL LEVEL SENSOR TO PANEL CR 4	PANEL
BROWN	6	BACK UP LIGHTS	PANEL
	11	BLACK PRIMARY CONVEYOR SOLENOID	15 (2)
	16	RED CROSS CONVEYOR SOLENOID	17 (2)
	21	BLUE BULK LOADER CONVEYOR SOLENOID	14 (2)

DTS-0373 B

1 12VDC  
2  $\frac{1}{2}$

TEMPERATURE SWITCH

1 12VDC  
2 N.C.  
3 N.O.

DTS-0198 C

1 12VDC  
2  $\frac{1}{2}$

BRAKE PRESSURE SWITCH

1 12VDC  
3 N.O.

OUT DTS-0160 IN

FAIRBY FILTER GREEN 60T INPUT PULSE BLACK  
1 12VDC RED CR 4 12VDC BROWN  
2 N.C. GREEN GROUND BLUE  
3 N.O.

① #

9/22/00

30A	13	A/C
30A	12	ACTUATOR BACKUP
30A	11	ROADLIGHTS SWITCH
20A	10	FUEL PUMP
30A	9	CAB FIELD LIGHTS RELAY
20A	8	CAB OVERHEAD 2-SPEED AUXILIARY OUTLET
20A	7	CYLINDERS OVERHEAD 2-SPEED 4X4 GAUGE PANE
30A	6	RADIO WIPER
20A	5	CONNECTORS BRAKE DIS-DRG
20A	4	PARK BRAKE LIGHT SWITCH
30A	3	LEFT WORK LIGHT SWITCH
30A	2	RIGHT WORK LIGHT SWITCH
20A	1	HAZARD TURN LIGHT STAT

30A	17	CAB ROAD LIGHTS RELAY
20A	16	STEERING REVERSING VALVES
30A	15	LEFT WORK LIGHT RELAY
30A	14	RIGHT WORK LIGHT RELAY

9/22/00



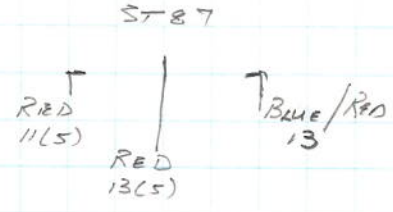
9/22/00

30A	30A	30A	20A	30A	20A	20A	30A	20A	20A	30A	30A	2DA
13	12	11	10	9	8	7	6	5	4	3	2	1
A/C	ACT'S	BACKUP ROAD LIGHTS	FUR/PUMP RED LIGHTS	CAB FIELD LIGHTS	"HOT" CAB OVER HEAD	CYLINDERS 2-SPEED GAUGE PANEL	RADIO WIPER	CONVEYORS	PARK BRAKE	LEFT WORK LIGHT SWIT	RIGHT WORK LIGHT SWIT	HAZARD START
	WHITE (85(1))	BROWN (88(1))	RED (81(1))	RELAY BROWN	RED (22(3))	RED (21(4))	RED (12(3))	YELLOW (89(1))	BLACK (017(1))	ORANGE (96(1))	GREEN (91(1))	YELLOW TURN START
	RELAY BROWN	RELAY PURPLE		RELAY BROWN	AUX OUTER BLACK (156(3))	ORANGE (143(2))	RED (18(5))		DTS-0160	RED (96(1))		BROWN
						BLACK (0012(1))			RED WARNING GROUND DRIVE			
									Blue/Black B			
									HYD. OIL LEVEL			
									YELLOW/ORANGE 25			
									CROSS SPX			
									BLACK 60			

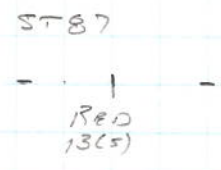
HAZARD START	TURN START	DTS-0160
1 CB1	1 CB1	GREEN BLACK
YELLOW 92(1)	BROWN 502(5)	RED CB4 (12V) BROWN
	4x4 LOCK	GREEN (1/2) BLUE

85 1/2	85 1/2	30A	20A	30A	30A
86	86 BLACK 1	17 CAB/ROAD LIGHTS	16 STEERING REV. VALVE	15 LEFT WORK LIGHT RELAY	14 RIGHT WORK LIGHT RELAY
87	87 BLACK 1	BROWN	RED 52(1)	BLACK	BLUE
30	30 BLACK 01(2)				

BACK LIGHTS	4x4 RELAY
85 1/2	85 1/2
86 BROWN 06(2)	86 ORANGE 144(2)
87 BROWN CB11	87 BLACK 1
30 BROWN 6	30 BLACK 01(2)



ROAD LIGHTS	START RELAY
85 1/2	85 1/2
86 PURPLE 094(2)	86 ORANGE 144(2)
87 PURPLE CB11	87 RED 2
30 PURPLE 94	30 WHITE 104(5)



CAB FIELD LIGHTS	RIGHT WORK LIGHTS
85 1/2	85 1/2
86 BROWN 504(3)	86 BLUE 036(2)
87 BROWN CB9	87 BLUE CB14
30 BROWN (H) 507(5)	30 BLUE 36

- YELLOW 42(1)
- WHITE 43(1)
- RED 44(1)
- BROWN 47(1)
- BLUE 48(1)

CAB ROAD LIGHTS	LEFT WORK LIGHTS
85 1/2	85 1/2
86 BROWN 503(3)	86 BLACK 034(2)
87 BROWN CB17	87 BLACK CB19
30 BROWN (H) 526(1)	30 BLACK 34

