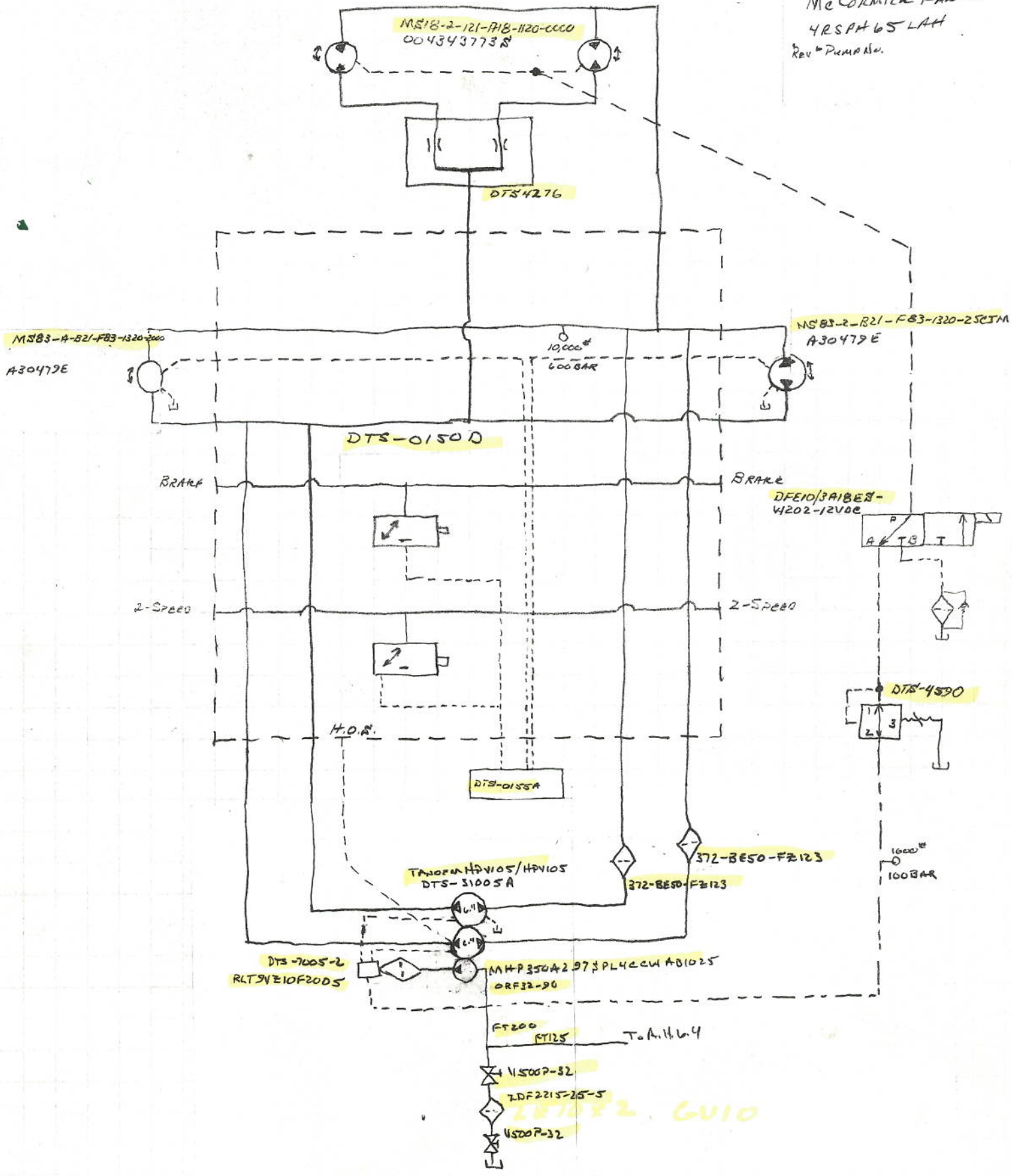


11049

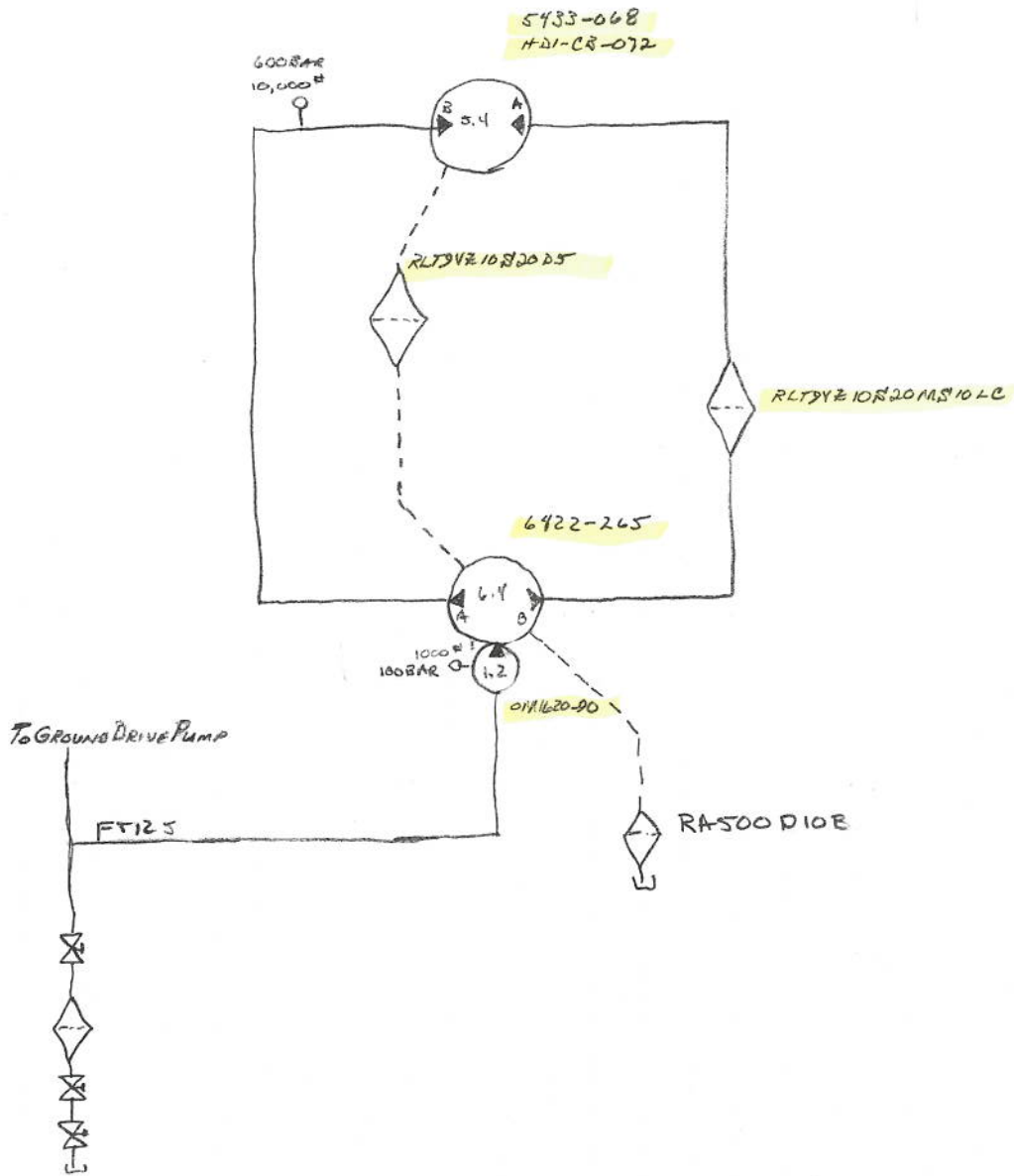
McCormick

QR SPH w/65" LAH

4/21/11  
 E11049  
 McCORMICK FARMS  
 4RSPH65 LAM  
 Rev. 4 Pump No.



3/9/11  
#11049  
McCORMICK FARMS  
4RSPH65L4H



3/2/11  
 #11049  
 Mc CURMICK FARMS  
 MRS AHLSLAH

LEFT PRIMARY  
 112-1058 ✓  
 28-006-5162

DTS-8811

Right Primary  
 112-1058 ✓  
 28-006-5162

DTS-8811

DTS-7005-2

RLTSV210F2005

DTS-7005-2

600 #  
 025 BAR

RV5-10-B-0-3

5000 #  
 600 BAR

500 #  
 600 BAR

DTS-2809

3.0

3.0

0.24  
 0.11620-90

FT125

FT106

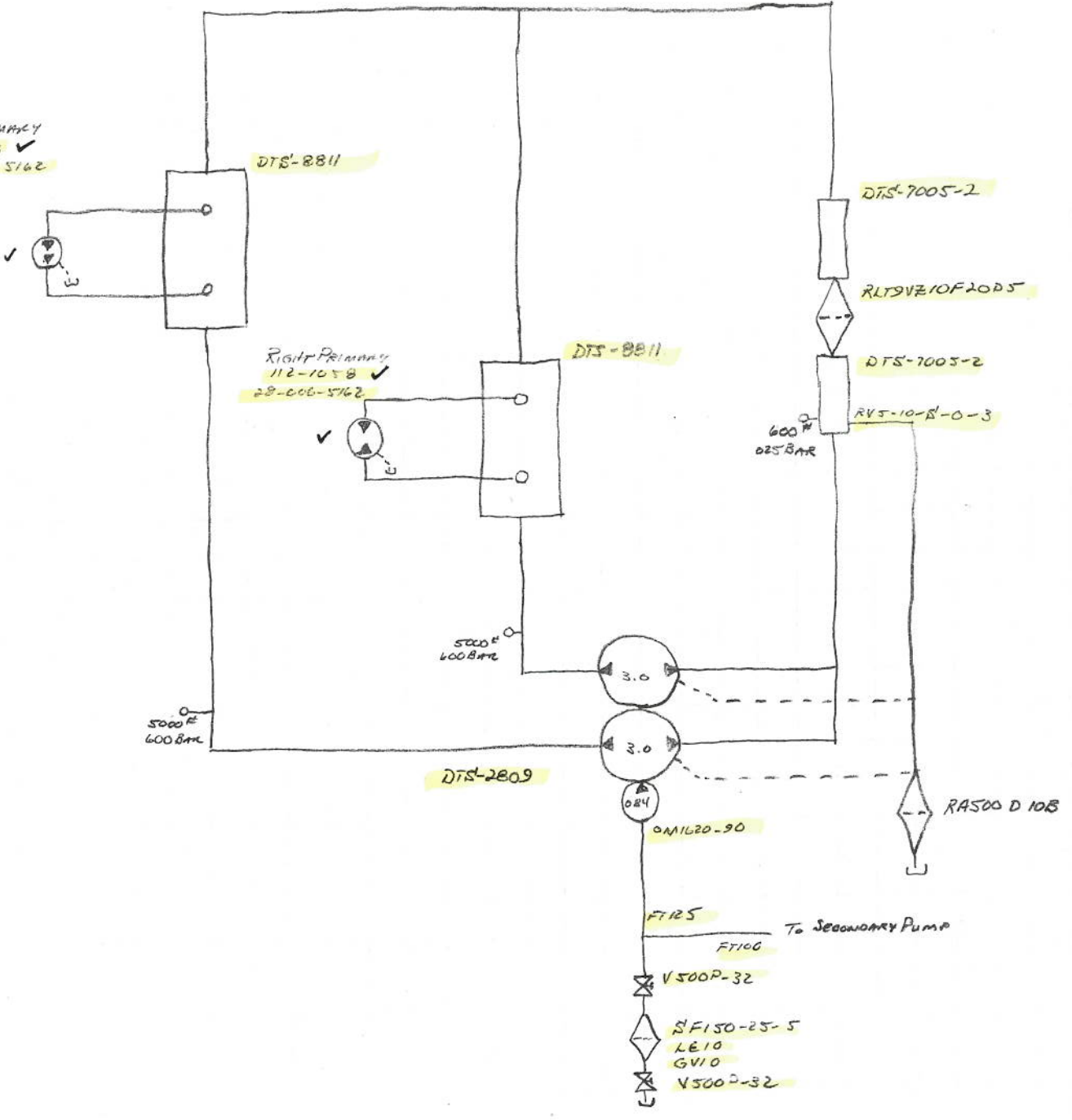
To Secondary Pump

V500P-32

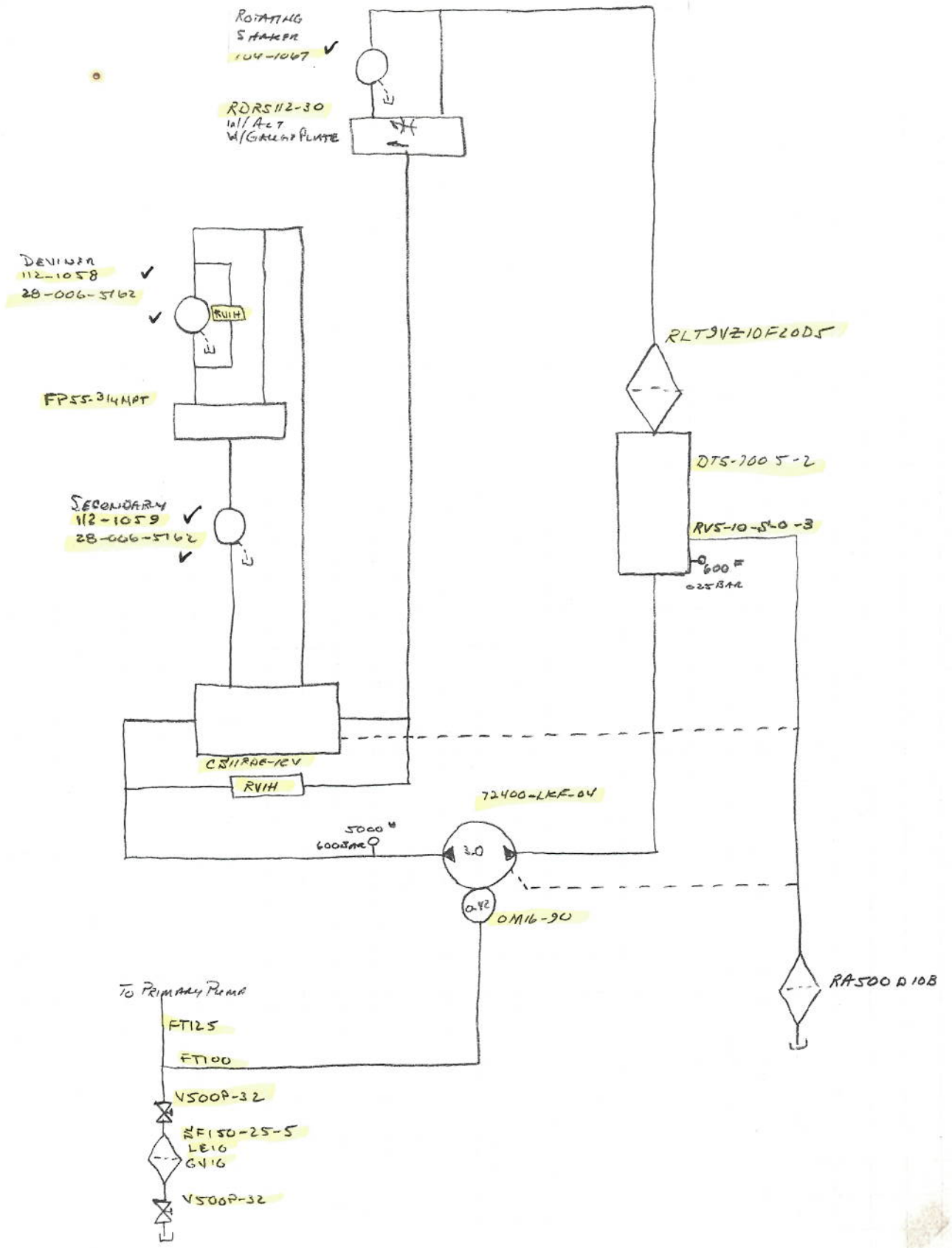
SF150-25-5  
 LE10  
 GV10

V500P-32

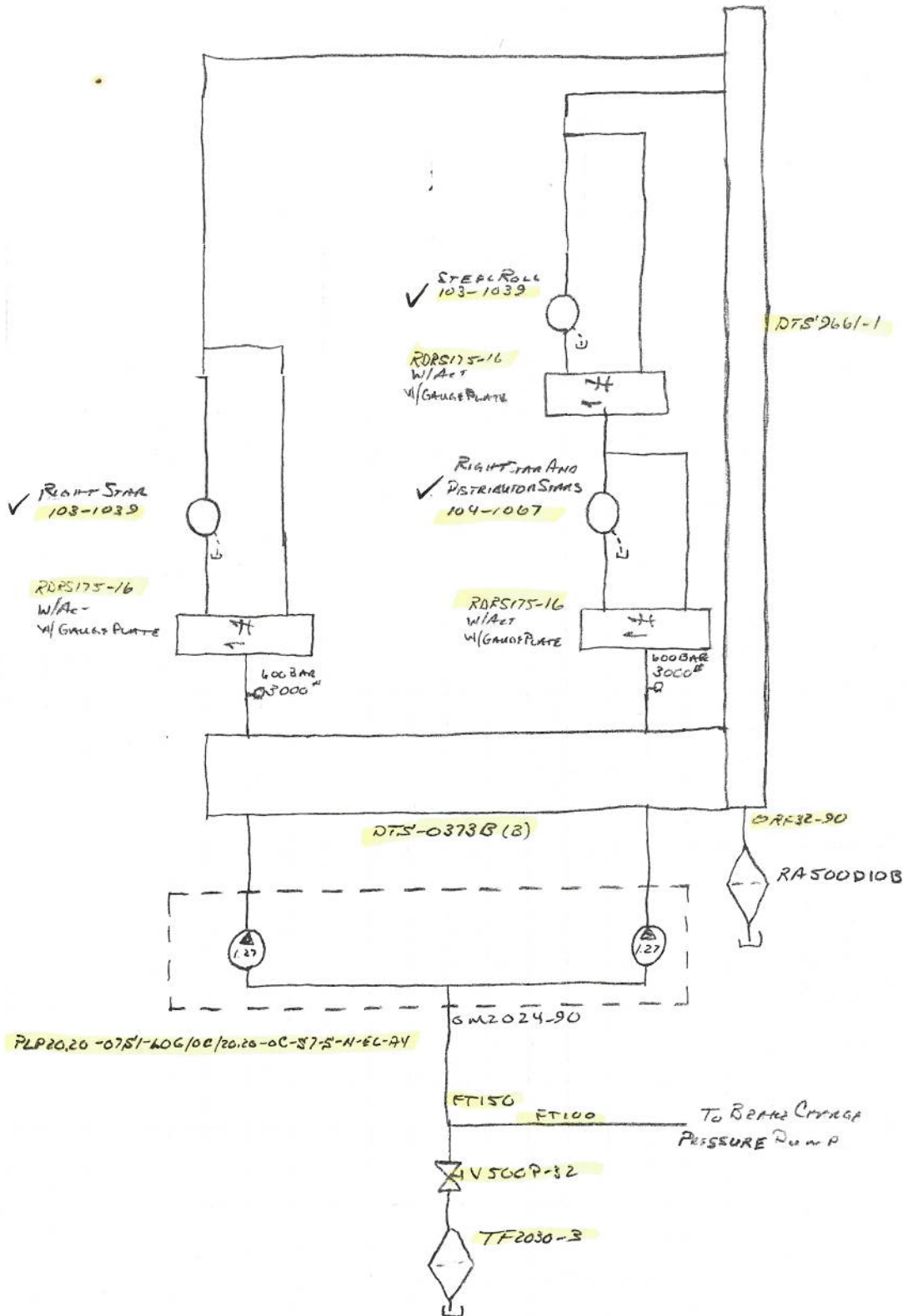
RAS00 D 108



3/19/11  
 #11049  
 MCCORMICK FARMS  
 4RSD46SLAH



3/9/11  
#11049  
Mc CORMICK FARMS  
4RSP465L4H



3/2/11  
 E11049  
 Mc CORMICK FARM  
 4RSD#65CAH

CROSS DISTRIBUTION SPAN  
 ROLLS  
 104-1067 ✓

RDRS/12-30  
 w/ACT ✓

CROSS  
 112-1066 ✓

RDRS/12-30  
 w/ACT ✓

SIDE RETURN  
 112-1066 ✓

RDRS/12-30  
 w/ACT ✓

STORE  
 104-1067 ✓

RDRS/12-30

SIDE  
 112-1066 ✓

RDRS/12-30  
 w/ACT  
 w/GAUGE PLATE

400BAR  
 3000#  
 XP-1C-1800J

400BAR  
 3000#

DTS-08788 (A)

ADD 30.43-MC+C3030-M0+43-MC-N  
 2017-06007

35VQTB/S  
 02-125554-5  
 2010-00012

ORF4648-30

F7250

2RVL-20-408

TF2540-3

ORF32-90

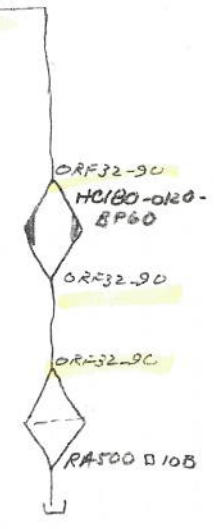
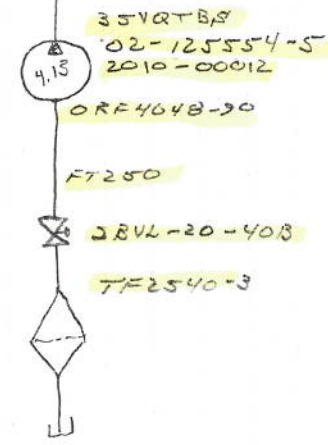
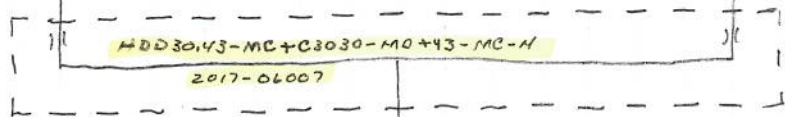
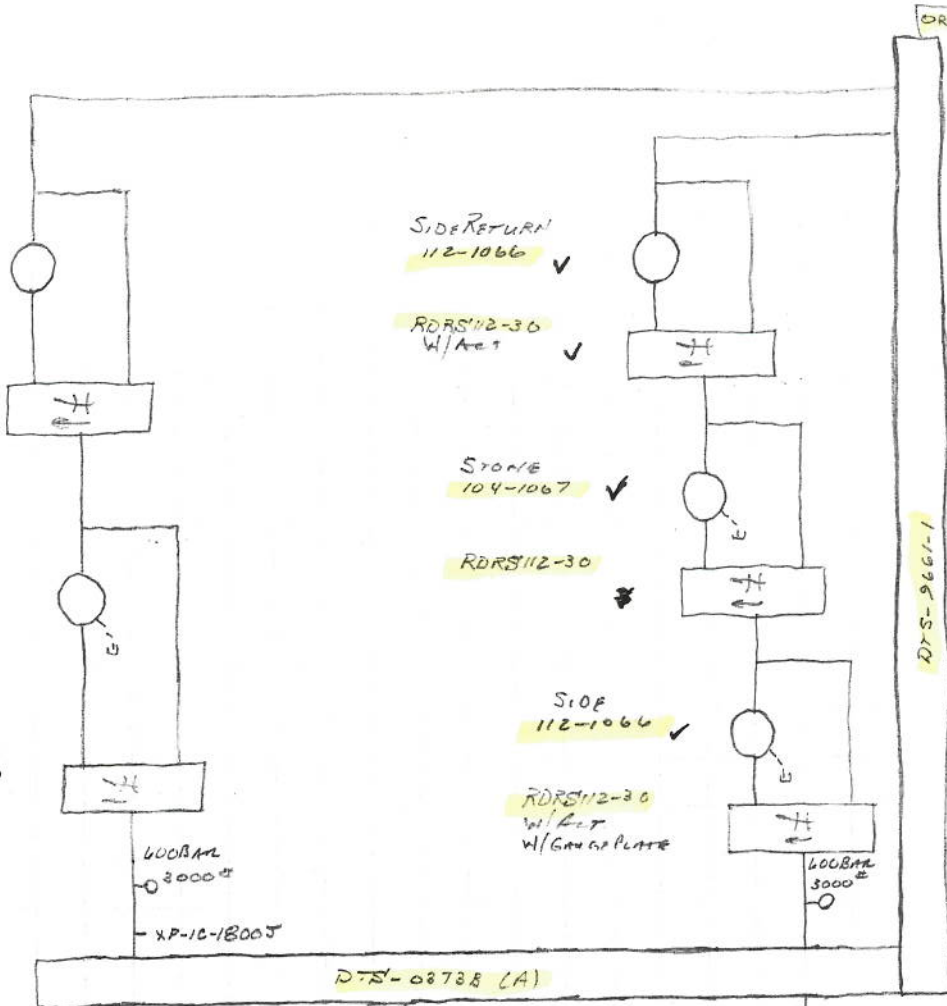
ORF32-90  
 HC180-0120-EP60

ORF32-90

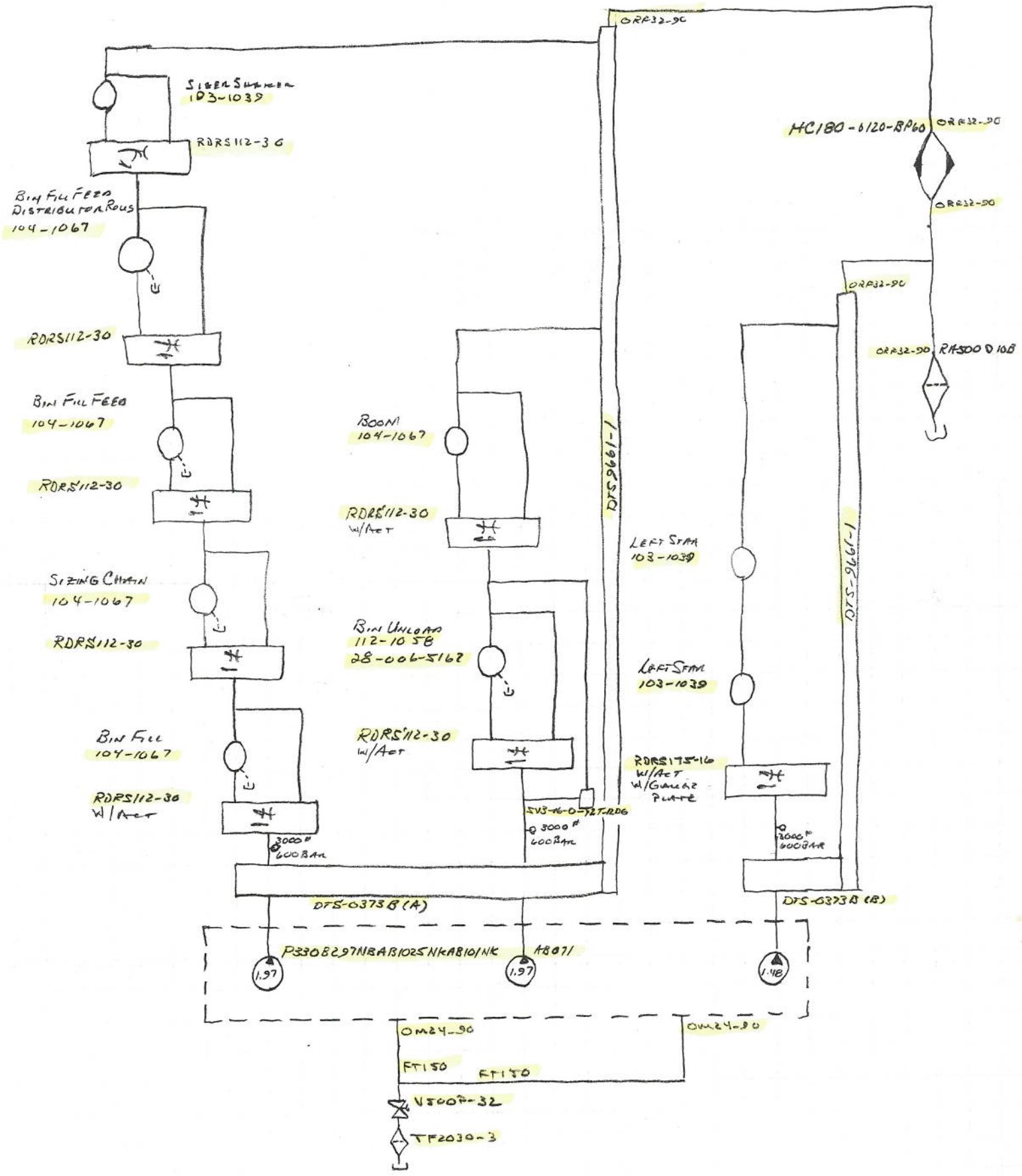
ORF32-90

RA500 D10B

DTS-9661-1

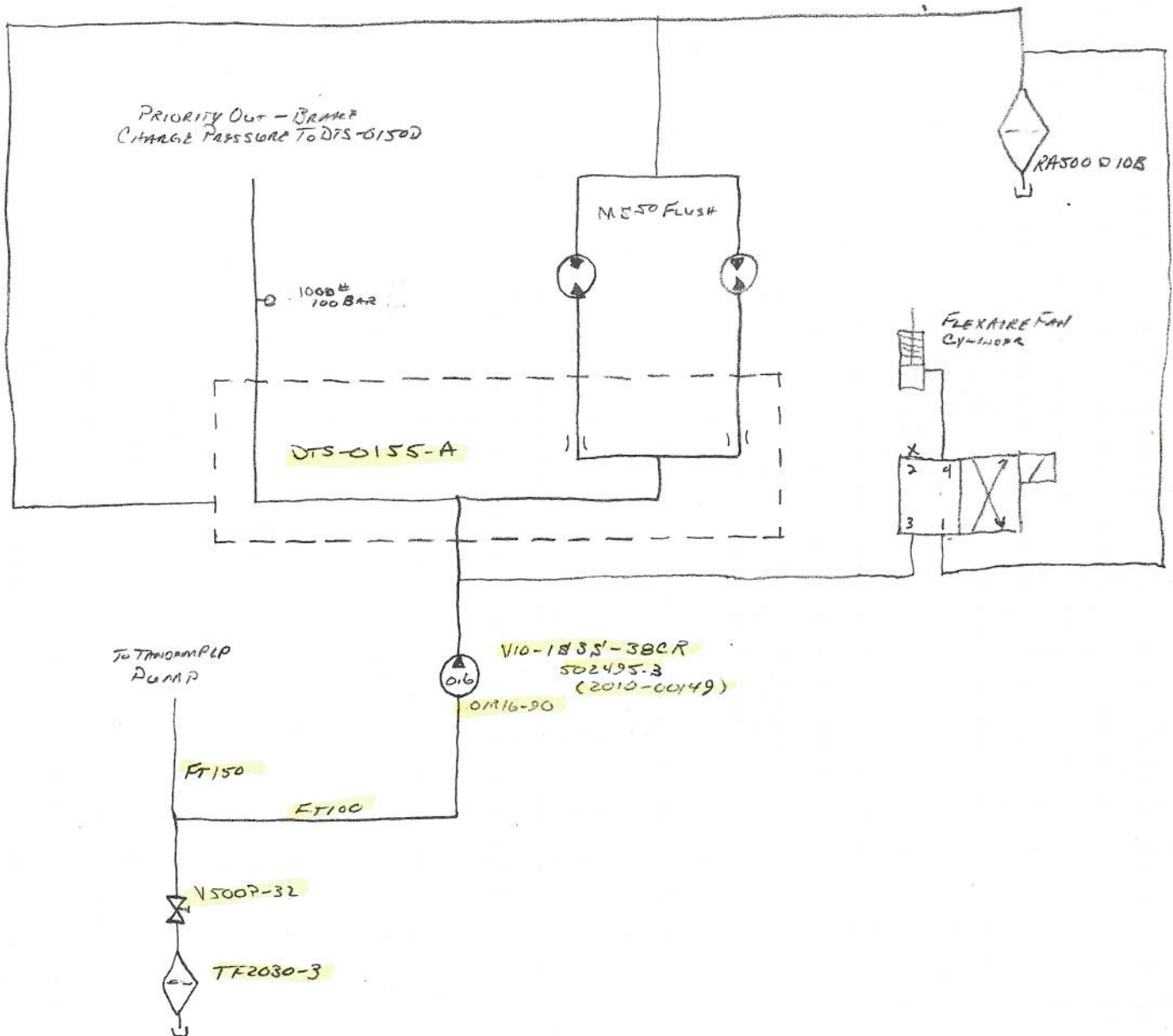


3/9/11 d/11049  
 Mc Cormick Farms  
 4RSPP65LAH

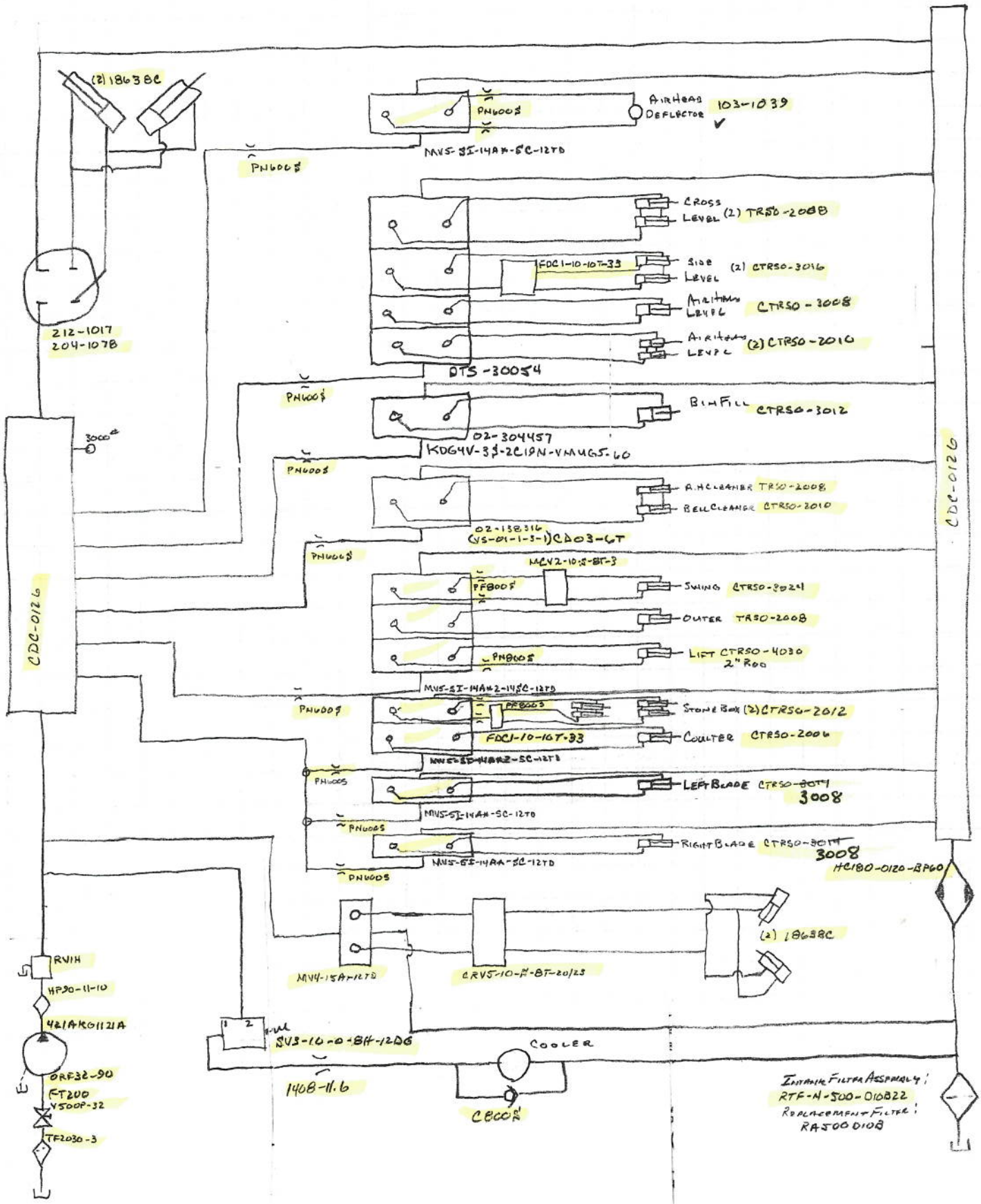




3/9/11  
#11049  
McCORMICK FARMS  
4RS0465LAH

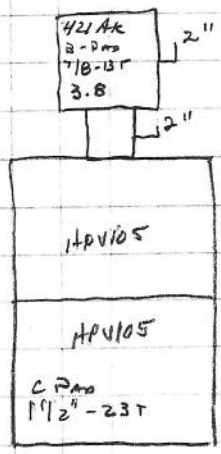


3/17/11  
# 11049  
Mc Cormick Farms  
4R50465LH  
Rear Level Circuit.

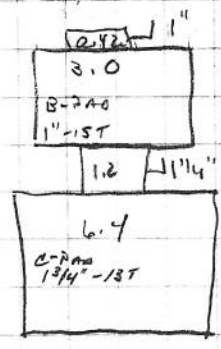


Initial Filter Assembly:  
RTF-M-500-010B22  
Replacement Filter:  
RA500 010B

- |  |  |   |  |  |   |
|--|--|---|--|--|---|
| <p>(4")<br/>         TF2540-3<br/>         2 1/2" 90° STEEL<br/>         2 1/2" C/S N/A<br/>         2BV L20-40B<br/>         FT250<br/>         * 35VQTBS</p> | <p>(3")<br/>         2" X 2" BUSH<br/>         2" C/S N/A<br/>         VSDOP-32<br/>         FT200<br/>         ORF32-90<br/>         ZDF2215-25-5<br/>         W43-32PK-2"<br/>         2" 90° STEEL<br/>         2" C/S N/A<br/>         VSDOP-32<br/>         2" C/S N/A<br/>         2" TEE 1/0<br/>         Bush 0-2" 90° STEEL<br/>         2" X 1 1/4" BUSH<br/>         FT125<br/>         L.4<br/>         * TAN. HPV105/HPV105</p> | <p>(3")<br/>         TF2030-3<br/>         2" C/S N/A<br/>         VSDOP-32<br/>         2" 90° STEEL<br/>         FT200<br/>         * 421AK</p> | <p>(3")<br/>         TF2030-3<br/>         2" 90° STEEL<br/>         2" C/S N/A<br/>         VSDOP-32<br/>         2" TEE 1/0<br/>         X- 2" X 1 1/2" BUSH<br/>         FT150<br/>         * TRIP. COMM. PUMP<br/>         O- 2" 90° STEEL<br/>         2" X 1 1/2" BUSH<br/>         FT150<br/>         * TRIP. COMM. PUMP.</p> | <p>(3")<br/>         TF2030-3<br/>         2" 90° STEEL<br/>         2" C/S N/A<br/>         VSDOP-32<br/>         2" C/S N/A<br/>         2" TEE 1/0<br/>         X- 2" X 1 1/2" BUSH<br/>         FT150<br/>         * TAN. ALP<br/>         O- 2" 90° STEEL<br/>         2" X 1" BUSH<br/>         FT100<br/>         * PLP20.9</p> | <p>(4")<br/>         4" X 2" BUSH<br/>         2" 90° STEEL<br/>         2" C/S N/A<br/>         VSDOP-32<br/>         2" X 1 1/2" BUSH<br/>         1 1/2" C/S N/A<br/>         RFR50-25-5<br/>         1 1/2" C/S N/A<br/>         2" X 1 1/2" BUSH<br/>         VSDOP-32<br/>         2" C/S N/A<br/>         2" TEE 1/0<br/>         X 2" X 1 1/4" BUSH<br/>         1 1/4" 45° STEEL<br/>         FT125<br/>         * TAN. 3.0/3.0<br/>         O- 2" 90° STEEL<br/>         2" X 1" BUSH<br/>         FT100<br/>         * SINCP 3.0</p> |
|--|--|---|--|--|---|

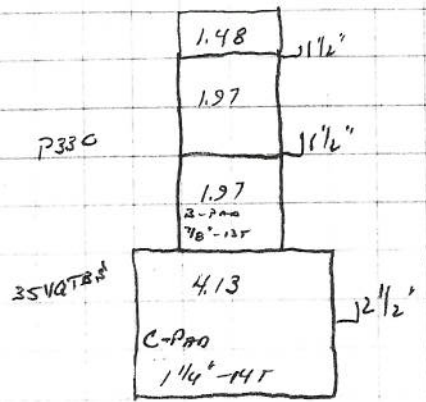


L.R.

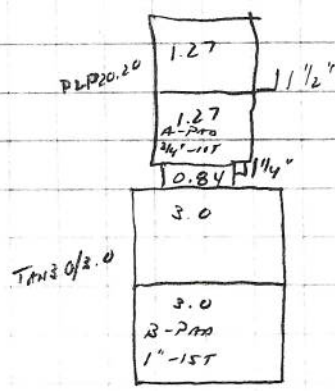


L.L.

- |                     |                         |
|---------------------|-------------------------|
| L.R. TANDEM 6.4     | CRUINO DRIVE            |
| 421AK               | STEERING                |
| L.L. 6.4            | AIR HEAD                |
| 3.0                 | SECONDARY               |
| T.R. 35VQTBS        | CROSS                   |
|                     | SHOE                    |
| TRIP. COMMERCIAL    | RIN FIL                 |
|                     | RIN W/LOAD              |
|                     | LEFT SEAT TABLE         |
| TL - TANDEM 3.0/3.0 | LEFT PRIMARY            |
|                     | RIGHT PRIMARY           |
| TANDEM - PLP 20.20  | RIGHT SEAT TABLE        |
|                     | RIGHT SEAT TABLE 1ST.   |
| V10                 | BRAND CHARGE PRESSURE   |
|                     | FLOWSWITCH              |
|                     | ENGINE COOLING FAN REV. |



T.R.



T.L.

DURST - 4P209-1.20J-N11-BBSH-CC4-CEH-CE3H-LS;  
 DRIVE PLATE-TORSION CONTROLS 19310

V10 0.6 1" 3/16" 11T  
 ENGINE - OSK-15-450H.P.

3/2/11  
L11049  
McCORMICK FARMS  
HASSELL LAH

