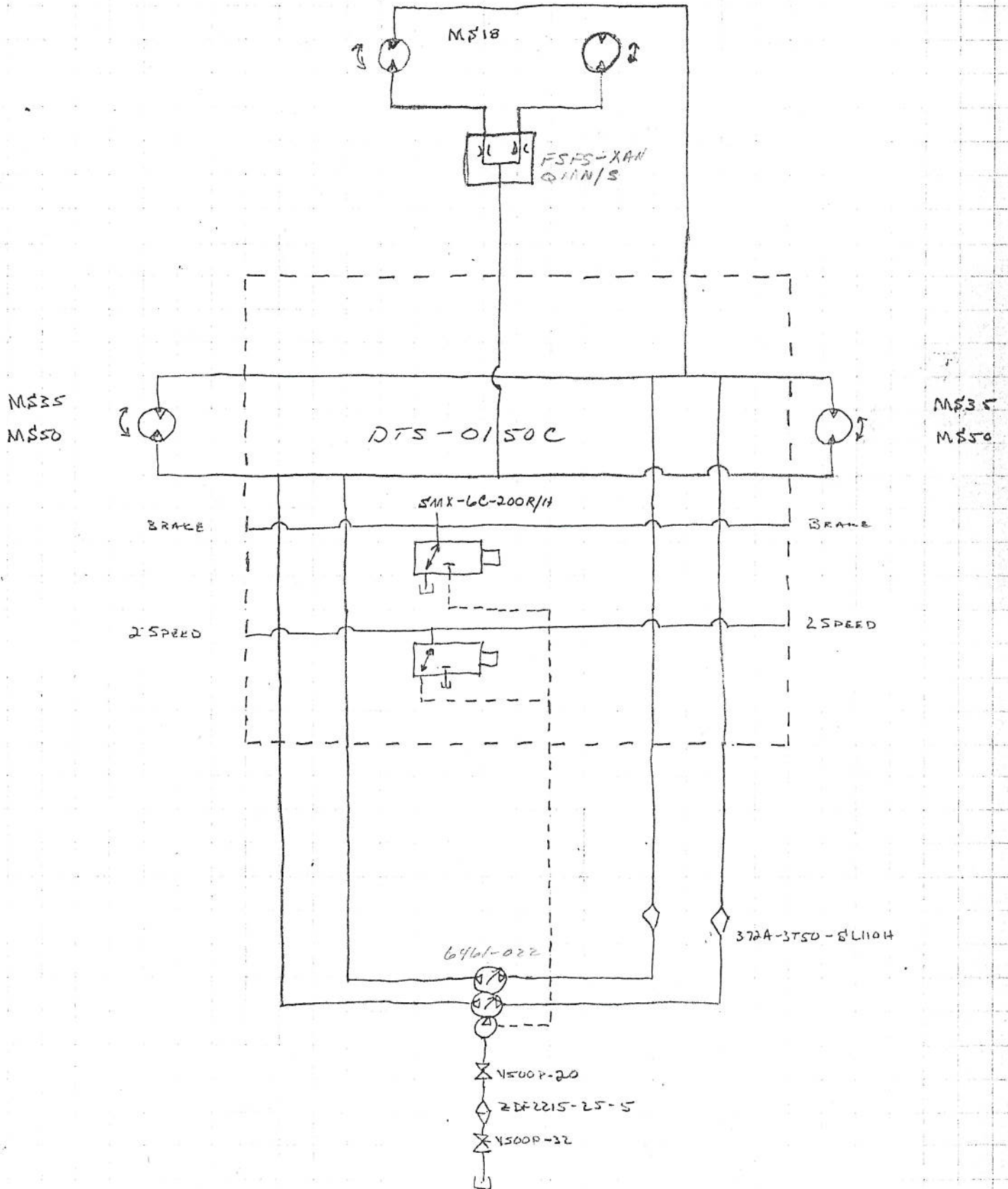


1998 SELF PROPELLED HARVESTER GROUND DRIVE  
DTS-0150C

21712

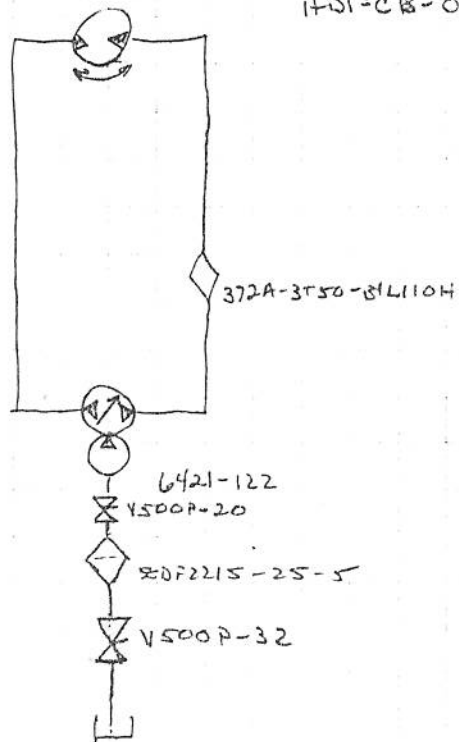


1998 65" Air Head

#1712

5431-068

HDI-CB-068 GEAR BOX

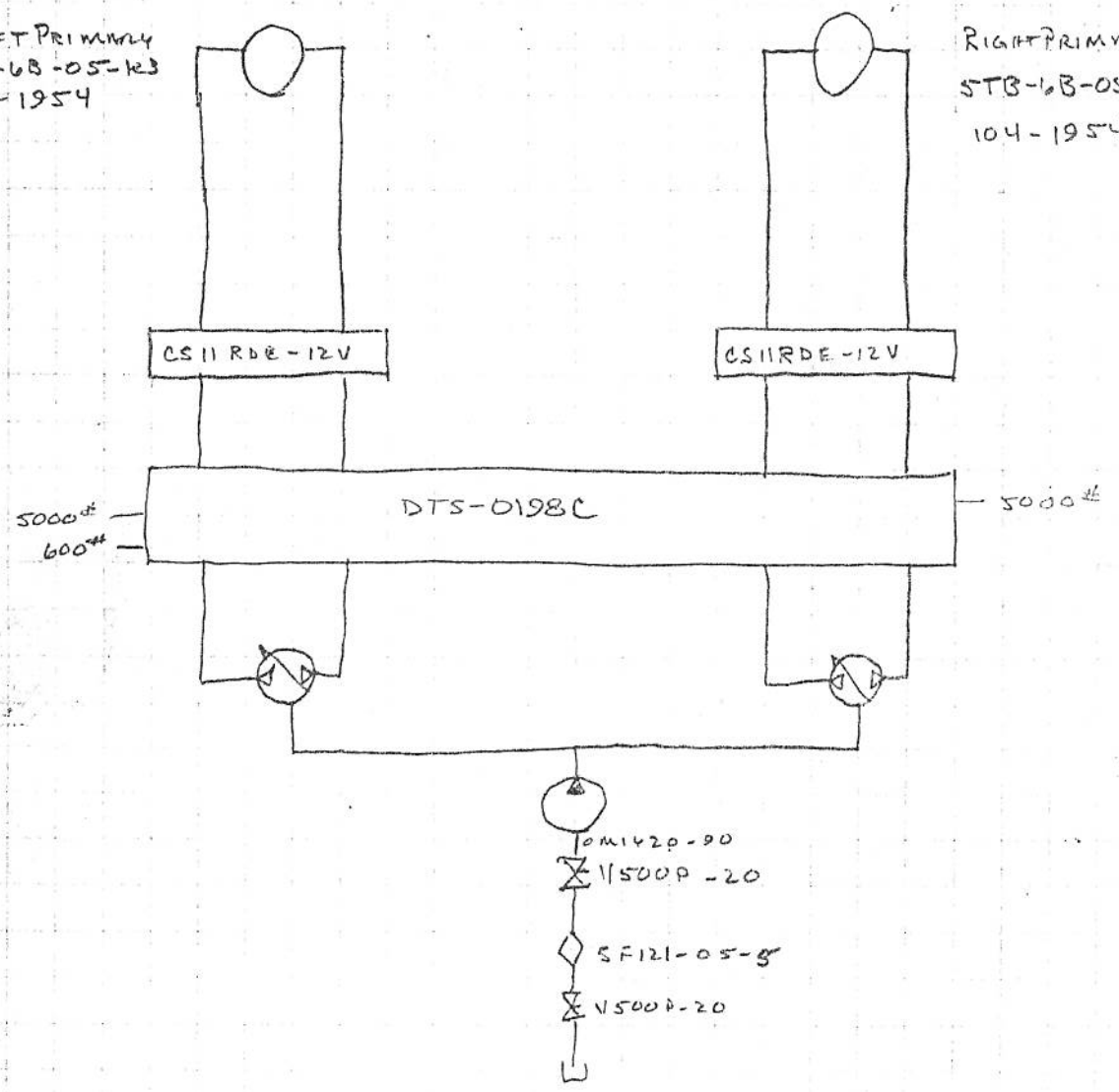


#1712

1998 4 F. 6. RSPH VI/65" A.H. / 40" A.H.  
N-14 / TA1919 / MS 50 / TAN. 64 / REAR STEER / REVERSING - 2 PRIM-SEC/REV

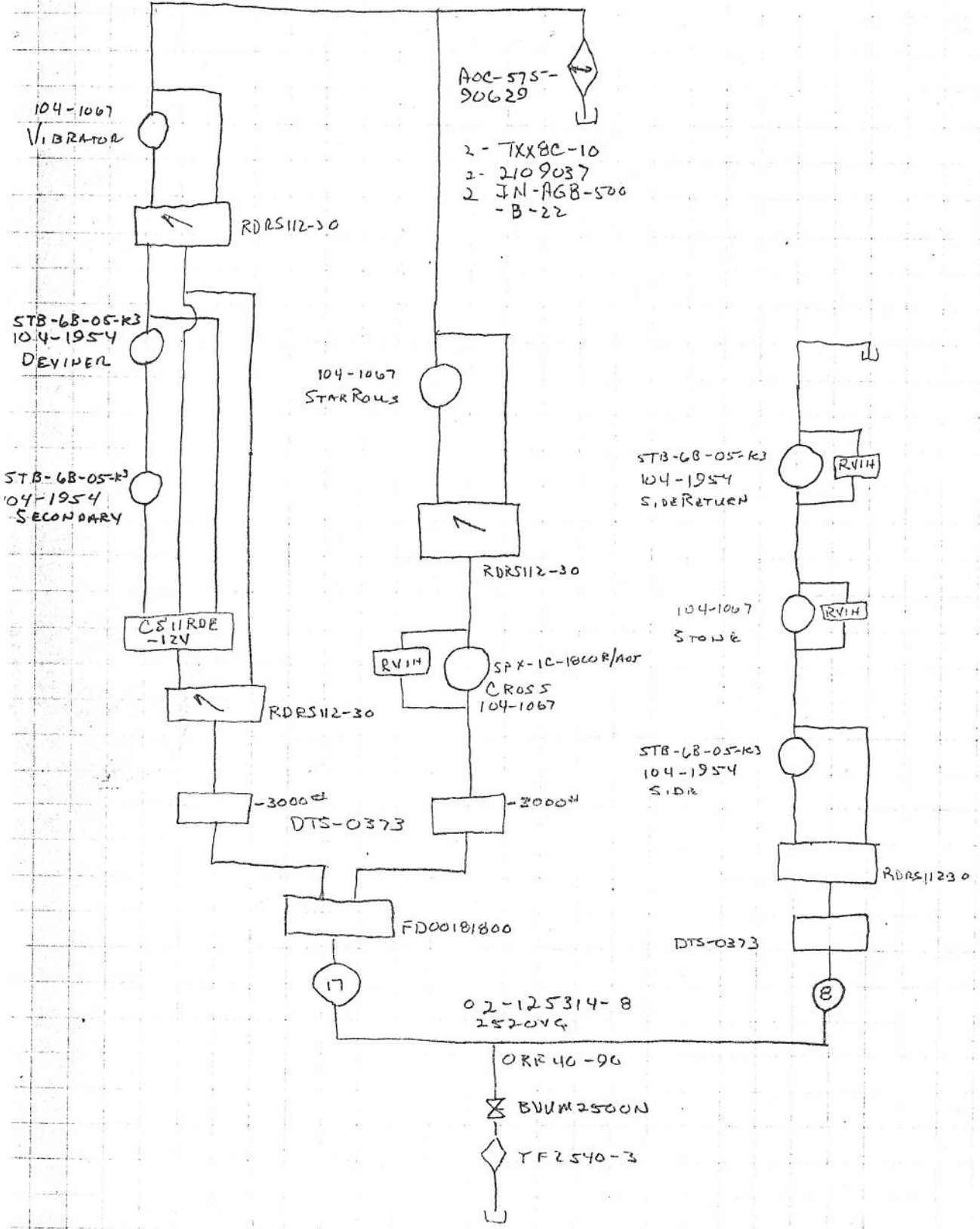
LEFT PRIMARY  
STB-6B-05-K3  
104-1954

RIGHT PRIMARY  
STB-6B-05-K3  
104-1954



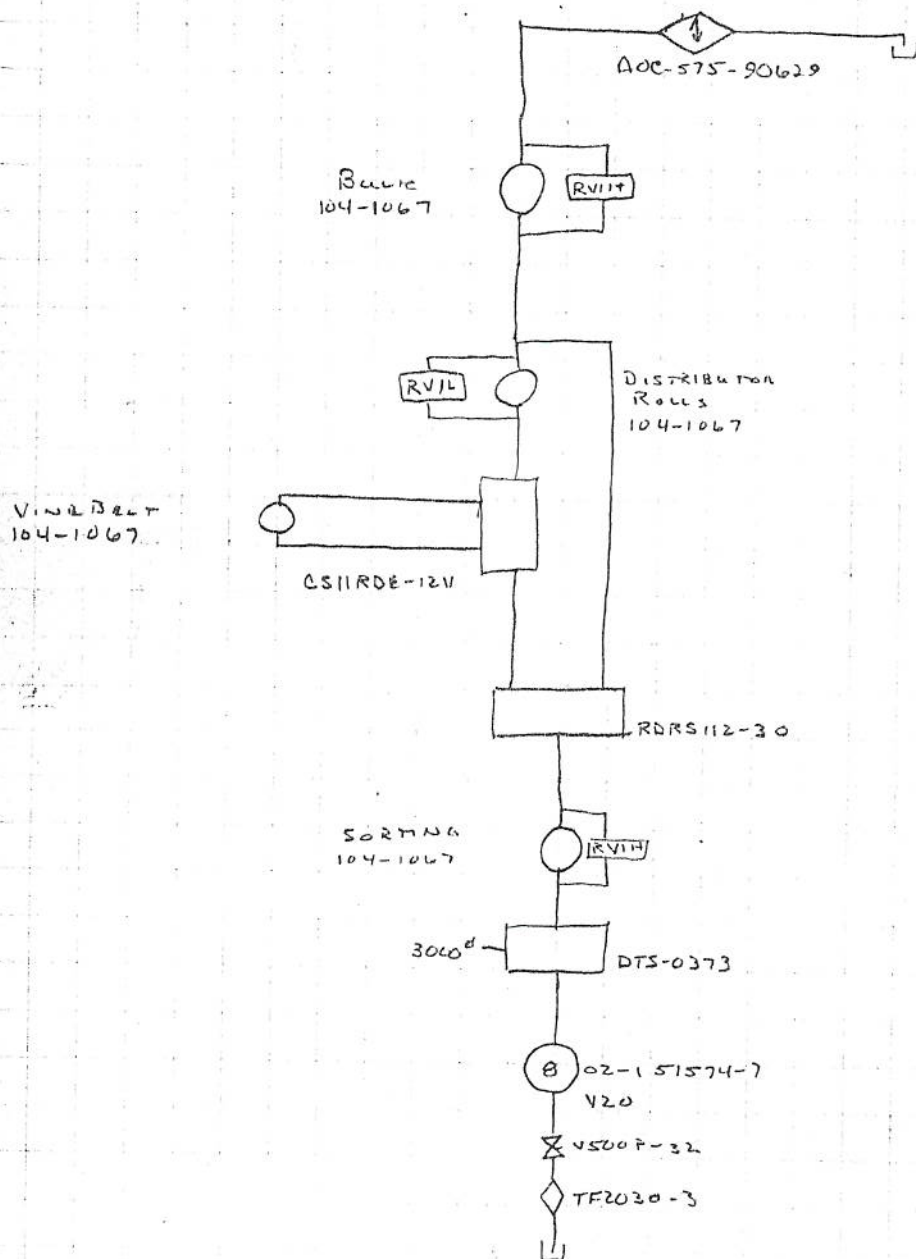
PRIMARY CIRCUIT

1998 4'6" RSPH W/65" A.H. / 40" A.H. B #1712  
 SECONDARY / CROSS / SIDE CIRCUITS  
 OPTION ADDED - GEAR BOXES SIDE & SIDE RETURN



#1712

1998 4'6" RSPH w/65" A.H / 40" A.H. A  
SORTING CIRCUIT w/ VINE BELT



1998 4 $\frac{1}{2}$ " RSPH W/GS" / 40" A.H.  
 OPTION ADDON: REAR STEERING

A

# 1712

