

#07016

Tupling

4RS PH w/65" AH - Bin

HYDRAULICS FINISH MATERIALS LIST

BEGINNING DATE 7-16-07 PROJECT NO. 027906
 END DATE 7-26-07

QTY	PART NUMBER	DESCRIPTION
1	2017-10027	DTS 4276
1	2017-10012	DTS 0150D
1	2017-10028	DTS 6505-1
1	2017-11400	SV4-10-0-0-00
2	2017-10030	DTS 6563-1-A
1	2017-10013	DTS 0155A
2	2017-10038	DTS 8811
3	2017-10031	DTS 7005-2
2	2017-07500	RV5-10-S-0-3
4	2017-05000	CS11RDE
1	2017-06000	FP55-3/4NPT
2	2017-07101	RV1H
13	2017-08004	RDRS 112-30
4	2017-08005	RDRS 175-16
2	2017-10020	DTS 0373B
2	2017-10037	DTS 9661-1
1	2017-06001	FD 00181800
1	2017-05500	MV5-14-12TD
7	2017-05501	MV5-14A-12TD
5	2017-05503	MV5-SI
5	2017-05502	MV5-SC
3	2017-05505	MV5-1BK
1	2017-05506	MV5-2BK
1	2017-05507	MV5-3BK
1	2017-05007	VAL 6310-2004-03-0089C
1	2017-05006	VAL 6210-2004-03-0089C
1	2017-04001	02-138316 (CD03-6T)
1	2017-04000	VS-01-1-3-1
1	2017-14000	MCV2-10-S-8T-3
1	2017-07000	CRV5-10-S-8T-20/23

HYDRAULICS FINISH MATERIALS LIST

BEGINNING DATE
END DATE

PROJECT NO.

QTY	PART NUMBER	DESCRIPTION
1	2017-05400	MV4-15A-12TD
1	2017-11405	SV4-10-C-6T-12DG
2	2017-10000	CDC 0126
1	2017-06004	FDC1-10-10T-6C
2	2011-06001	MS18-2-121-A18-1120-0000
1	2011-06007	M550 LONG RH
1	2011-06008	M550 LONG LH
1	2011-01001	5433-068
5	2011-00017	112-1058
1	2011-00007	104-1062
9	2011-00003	103-1039
6	2011-00011	104-1067
1	2011-00008	104-1064
3	2011-00019	112-1066
1	2011-00002	101-1027
1	2017-11304	SV3-16-0-12T-12DG
1		AB10,0010,02500 TRASH FAN motor
1	2011-00023	212-1017
1	2011-00022	204-1078
2	2015-021	372-BE50-F2123
1	2015-032	RLT9V210S20DS
1	2015-044	RLT9V210S20MS10LC
2	2015-031	RLT9V210F20DS
3	2015-014	LE10
3	2015-002	JN-AGB-500-TXX8C-10-
1	2015-022	HP90-11-10
1	2015-018	TF 2540-3
3	2015-017	TF 2030-3
1	2015-026	ZDF2215-25-5
1	2015-024	SF156-25-5

HYDRAULICS FINISH MATERIALS LIST

BEGINNING DATE
END DATE

PROJECT NO.

QTY	PART NUMBER	DESCRIPTION
2	2015-020	4" FWM
6	2015-019	3" FWM
2		W43-32PK
3	2012-30162430	18638C
4	2012-20081820	TR50-2008
3	2012-20101800	CTR50-2010
1	2012-20061800	CTR50-2006
2	2012-20121800	CTR50-2012
1	2012-30082000	CTR50-3008
1	2012-30122000	CTR50-3012
2	2012-30142000	CTR50-3014
2	2012-30162000	CTR50-3016
1	2012-30242000	CTR50-3024
1	2012-40303200	CTR50-4030
1	20038-009	DTS 7035 TANDEM 64
1	20052-009	6422-184
1	20151-009	78461-LAW-04 TAN. 3.0
1	20150-009	72400-LHD-04 SINGLE 3.0
1	20063-009	TANDEM CASSAPPA
1	20029-009	35VQT
1	20054-009	TRIPLE COMMERCIAL
1	20033-009	V10-1535-38CR
1	20010-009	02-341854 PVE 21L
1	2021-06158	SIGHT GAUGE
5	20067-010	ESKRIDGE GEAR BOX
1	20016-010	DP49 GEAR BOX DRIVE PLATE
1	20019-010	DP49 GEAR BOX
1	2020-7020	AOC-70-205702

HYDRAULICS FINISH MATERIALS LIST

BEGINNING DATE
END DATE

PROJECT NO.

QTY	PART NUMBER	DESCRIPTION
8	2014-24970	568-249 O-RING
2	20021-024	228 BN 90
3	102919-000	B PAD GASKET
1	600-10059-1	COUPLER
1	525-10156-1	INTERNAL SNAP RING
1	525-10021-1	EXTERNAL SNAP RING
1	2014-04270	042-70 O-RING
3	2014-22270	222-70 O-RING
16	M12X1.5X35mm HHCS 10.9	
16	M12 HF Collar Lock WASHER	
1		B27084AZKT CLEVIS & PIN
7	B48LFS0 12x12	
1	2014-23770	568-237 BN 70
5	2017-03012	3/4" BALL VALVE
1		BF12
+		BF08
2		GV-10
1		103463-650 6500# RELIEF
4		BRES2F
13"		1/4-28 ALL THREAD
1	2021-23306	25 1/2' CONTROL CABLE
1		10147-550 5500# RELIEF
16	M12X1.5X45mm HHCS 10.9	
16	M12 HF Collar Lock WASHER	
270qt	2036-0001	UNIVIS N68 Hyd OIL
46qt	2036-0003	15w40
14qt		80w90

ADD INTO INVENTORY

BXP04	BXP06	BXP08	BXP12	BXP16	HTB16	731-12	731-16	Y912
12	37	40	64		52	53		26
13	37	40	70			51		10
16	22	100	74			61		17
27	28	100	26			62		
	65	90	48			49		
	68	85	54			49		
	34	93	50					
	57	85	51					
	16	110	24					
	16	134	74					
	28	40	75					
	28	42	26					
	100	122	16					
	70	165	51					
	70	27	85					
	57	27	31					
	70	165	45					
	50	70	57					
	32	78						
		177						
		55						
		35						
		48						
		42						
		44						
		24						
		24						
		26						
		31						
		33						
		133						
		100						
		141						
		48						
		110						
		36						
		38						

T
U
P
L
I
M
E

BXP04	BXP06	BXP08	BXP12	BXP16	HTB16	731-12	731-16	Y912
	160	40	100	110				
	72	82	15	61				
	48	83	17	93				
	58	52	117					
	68	53	119					
	58	60	28					
	58	62	36					
	65	82	28					
		84	28					
		18	69					
		8	49					
		26	49					
		140	48					
		32	48					
		45	58					
		34	60					
		184	37					
		184	23					
		184	27					
		30	57					
		31	174					
		52	185					
		52	111					
		48	68					
		38	32					
		26	62					
		28	99					
		40	27					
		40	103					
		38	104					
		38	65					
			124					
			113					
			120					
			117					
			74					
			78					
			86					
			86					
			96					
			87					
			87					
			94					
			94					
			106					
			106					
			33					
			34					
			63					

L54 J. 1. 2. 3

BXP04	BXP06	BXP08	BXP12	BXP16	HTB16	731-12	731-16	Y912
	33	48	23				76	
	87	12"	25				72	
	56	18	26				66	
	48	16	44				79	
	38	14	82				44	
	15	48	33				44	
	43	38	24				44	
	74	74	18				44	
	40	20	65				120	
	29	28	42				128	
	40	89	56				60	
	27	43	38				67	
	66	43	41				83	
	68	67	21				90	
	57	75	26				107	
	45	43	38				42	
	50	59	25				103	
	61	36	26					
	18	50	44					
	31	52	35					
	16	18	24					
	32	23	26					
	12	14	27					
	20	29	23					
	39	27	48					
	39	29	23					
		107	42					
		26	53					
		30	94					
		22	94					
		24	20					
		13	10					
		30	71					
		48	80					
		32	77					
		70	100					
		89	92					
			38					
			28					
			28					
			83					
			48					
			77					
			60					
			57					
			98					
			139					
			10					
			52					

Tupling

Part #	Description	Quantity
881-12	U312 Suction Hose 3/4"	
881-16	U316 Suction Hose 1"	111" - 40"
881-20	U320 Suction Hose 1-1/4"	29" - 44" - 27"
881-24	U324 Suction Hose 1-1/2"	30" - 42" - 42" - 30"
881-32	U332 Suction Hose 2"	
881-40	U340 Suction Hose 2-1/2"	48"

N316	1" High Pressure Hose	
78C 16	1" High Pressure Hose	
78C 12	3/4" High Pressure Hose	
N312	3/4" High Pressure Hose	

HC075	Hose Clamp 3/4"	
HC100	Hose Clamp 1"	111
HC125	Hose Clamp 1-1/4"	V1
HC150	Hose Clamp 1-1/2"	V111
HC200	Hose Clamp 2"	XVI
HC215	Hose Clamp 2-15/16"	
HC238	Hose Clamp 2-3/8"	1111
HC250	Hose Clamp 2-1/2"	

2021-93050	Wearguard Hose Wrap 1/2"	3'
2021-93100	Wearguard Hose Wrap 1"	12"
2021-93150	Wearguard Hose Wrap 1-1/2"	6' / 12' / 3' / 2'
2021-93200	Wearguard Hose Wrap 2"	6' / 15' / 9' / 10'

TUPLING
4RSPH 65" A.I.T

Item Number	Item Description	Bin #	Quantity
000000.00	Brake Fitting	06-E04C	
000000.11	Fitting for Case Drain on Poclains	06-E02C	
10673-12-12 20027-011	3/4" Hose End		
10673-16-16 20028-011	1" Hose End		
125HBL-4-6 20047-011	Hose Barb To Male Pipe		
12PA 5151HK-12 20045-011	3/4" SAE Split Flange Code 61		
12PH 20058-011	MS-18 3/4" Split Flange	06-D12B	
1303-1.6 20055-013	1.6 GPM Vonberg Flow Control (Cool)	06-E04E	
1304-3 20076-013	3 GPM Vonberg Flow Controls	06-E05E	
1304-5 20077-013	5 GPM Vonberg Flow Control	06-E06E	
1501-04x04 20050-011	NPT Male To 90 NPT Female Swivel		
1501-06x06 20051-011	NPT Male To 90 NPT Female Swivel		
1501-08x08 20052-011	NPT Male To 90 NPT Female Swivel		
1501-12x12 20053-011	NPT Male To 90 NPT Female Swivel		
1501-16x16 20054-011	NPT Male To 90 NPT Female Swivel		
16-4XHX6G5TP-S 20032-011	Parker 1" JIC Diag Tee Test Unit Ftg		
1V1990	Back Pressure Valve for CS11RDE	06-E03B	
2-SFK-48 20015-011	Split Flange Kit		
20PA 5151HK-20 20049-011	1 1/4" SAE Flange Kit Code 61		
20PH	1 1/4" Split Flange	06-D12P	
2406 08-12	1/2" x 3/4" JIC Increaser	06-E01E	
2406 12-16	3/4" x 1" JIC Increaser	06-E02E	
2406 16-20	1" x 1 1/4" JIC Increaser	06-E03E	
2406 24-20	1 1/4" x 1 1/2" JIC Increaser	06-E02B	
24PA 5151HK-24 20048-011	1 1/2" SAE Flange Kit Code 61		
24SA 04	1/4" NPT Hydraulic Nipple	06-D04N	
24SA 06	3/8" NPT Hydraulic Nipple	06-D03N	
24SA 08	1/2" NPT Hydraulic Nipple	06-D02N	#1
24SA 12	3/4" NPT Hydraulic Nipple	06-D01N	
24SA 16	1" NPT Hydraulic Nipple	06-D09M	
24SB 06x04	3/8" x 1/4" NPT Hydraulic Bushing	06-D03P	
24SB 08x04	1/2" x 1/4" NPT Hydraulic Bushing	06-D02P	
24SB 08x06	1/2" x 3/8" NPT Hydraulic Bushing	06-D09O	
24SB 12x04	3/4" x 1/4" NPT Hydraulic Bushing	06-D01P	
24SB 12x06	3/4" x 3/8" NPT Hydraulic Bushing	06-D08O	
24SB 12x08	3/4" x 1/2" NPT Hydraulic Bushing	06-D07O	
24SB 16x08	1" x 1/2" NPT Hydraulic Bushing	06-D06O	
24SB 16x12	1" x 3/4" NPT Hydraulic Bushing	06-D05O	
24SB 20x12	1 1/4" x 3/4" NPT Hydraulic Bushing	06-D04O	
24SB 20x16	1 1/4" x 1" NPT Hydraulic Bushing	06-D03O	
24SB 24x16	1 1/2" x 1" NPT Hydraulic Bushing	06-D02O	
24SB 24x20	1 1/2" x 1 1/4" NPT Hydraulic Bush.	06-D01O	
24SJ 04	1/4" NPT Hydraulic Coupler	06-D09N	

12-4XHX6G5TP-S 3/4" PARKER TEST TEE |||

24SJ 06	3/8" NPT Hydraulic Coupler	06-D08N	
24SJ 08	1/2" NPT Hydraulic Coupler	06-D07N	1
24SJ 12	3/4" NPT Hydraulic Coupler	06-DC6N	11
24SJ 16	1" NPT Hydraulic Coupler	06-D05N	
25UG 04	1/4" NPT Hydraulic 90 St. El	06-D03R	
25UG 06	3/8" NPT Hydraulic 90 St. El.	06-D02R	
25UG 08	1/2" NPT Hydraulic 90 ST. EL.	06-D01R	
25UG 12	3/4" NPT Hydraulic 90 ST. EL.	06-D09Q	111
25UG 16	1" NPT Hydraulic 90 ST. EL.	06-D08Q	
25VC 06	3/8" NPT Hydraulic Male-Female Tee	06-D02Q	
25VC 12	3/4" NPT Hydraulic Male-Female Tee	06-D01Q	
25VJ 04	1/4" NPT Hydraulic Female Tee	06-D07Q	
25VJ 06	3/8" NPT Hydraulic Female Tee	06-D06Q	
25VJ 08	1/2" NPT Hydraulic Female Tee	06-D05Q	
25VJ 12	3/4" NPT Hydraulic Female Tee	06-D04Q	
25VJ 16	1" NPT Hydraulic Female Tee	06-D03Q	
25VK 08	1/2" NPT Hydraulic Service Tee	06-D05P	1
25VK 12	3/4" NPT Hydraulic Service Tee	06-D04P	
270003001	1/8" NPT Breather	06-E07D	
270003015	1/4" NPT Breather	06-E07E	
3269 04-04	1/4" NPT x 1/4" Oring Adapter	06-D01T	
3269 06-04	1/4" NPT x 3/8" Oring	06-D08S	
3269 06-06	3/8" NPT x 3/8" Oring Adapter	06-D07S	
3269 08-04	1/4" NPT x 1/2" Oring Adapter	06-D06S	
3269 08-06	3/8" NPT x 1/2" Oring Adapter	06-D05S	
3269 08-08	1/2" NPT x 1/2" Oring Adapter	06-D04S	
3269 08-12	1/2" O'ring x 3/4" NPT Adapter	06-E04B	
3269 10-06	3/8" NPT x 5/8" Oring Adapter	06-D03S	
3269 10-08	1/2" NPT x 5/8" Oring Adapter	06-D02S	
3269 10-12	3/4" NPT x 5/8" Oring	06-D01S	
3269 12-08	1/2" NPT x 3/4" Oring	06-D09R	11
3269 12-12	3/4" NPT x 3/4" Oring	06-D08R	11
3269 16-12	3/4" NPT x 1" Oring Adapter	06-D07R	
3269 16-16	1" NPT x 1" Oring Adapter	06-D06R	
3269 20-20	1 1/4" NPT x 1 1/4" Oring Adapter	06-D05R	
3800 08x06	8 JIC to	06-E02D	
500454-10S 20018-011	Hydraulic Fitting		
500454-12S 20019-011	Hydraulic Fitting		
500454-16S 20020-011	Hydraulic Fitting		
500454-6S 20016-011	Hydraulic Fitting		
500454-8S 20017-011	Hydraulic Fitting		
504095-12S 20025-011	Hydraulic Fitting		
5406-4-2 20035-011	Tompkins Hex Reducer Test Unit Fttng		
5406-6-4 20036-011	Tompkins Hex Reducer Test Unit Fttng		

5406-8-4 20037-011	Tompkins Hex Reducar Test Unit Fitting		
5602-8 20034-011	Tompkins Street Tee Test Unit Fitting		
5E434	1/2" Gas ball Valve	06-E07C	
5E435 22022-023	3/4" Gas Ball Valve	06-E07C	
60SA 04x04	1/4" NPT male x 1/4" NPT Female	06-D03U	
60SA 06x04	3/8" NPT male x 1/4" NPT female	06-D02U	
60SA 06x06	3/8" NPT male x 3/8" NPT female	06-D01U	
60SA 06x08	3/8" NPT male x 1/2" NPT Female	06-D09T	
60SA 08x06	1/2" NPT male x 3/8" NPT female	06-D08T	
60SA 08x08	1/2" NPT male x 1/2" NPT female	06-D07T	≠
60SA 08x12	1/2" NPT male x 3/4" NPT female	06-D06T	
60SA 12x08	3/4" NPT male x 1/2" NPT female	06-D05T	
60SA 12x12	3/4" NPT male x 3/4" NPT female	06-D04T	
60SA 12x16	3/4" NPT male x 1" NPT female	06-D03T	
60SA 16x12	1" NPT male x 3/4" NPT female	06-D02T	
60SB 04x04	1/4" Oring x 1/4" Swivel Female	06-E01B	
60SB 06x04	3/8" Oring x 1/4" NPT female	06-D02V	
60SB 06x06	3/8" Oring x 3/8" NPT female	06-D01V	
60SB 06x08	3/8" Oring x 1/2" NPT female	06-D09U	
60SB 08x06	1/2" Oring x 3/8" NPT female	06-D08U	
60SB 08x08	1/2" Oring x 1/2" NPT female	06-D07U	
60SB 08x12	1/2" Oring x 3/4" NPT female	06-D06U	
60SB 12x08 20026-011	3/4" Oring x 1/2" NPT female	06-D05U	
60SB 12x12	3/4" Oring x 3/4" NPT female	06-D04U	
60UB 04x04	1/4" Oring x 1/4" NPT female 90	06-D02W	
60UB 04x06	1/4" Oring x 3/8" NPT female 90	06-D01W	
60UB 06x04	3/8" Oring x 1/4" NPT female 90	06-D09V	
60UB 06x06	3/8" Oring x 3/8" NPT female 90	06-D08V	
60UB 06x08	3/8" Oring x 1/2" NPT female 90	06-D07V	
60UB 08x06	1/2" Oring x 3/8" NPT Female 90	06-D06V	
60UB 08x08	1/2" Oring x 1/2" NPT female 90	06-D05V	
60UB 08x12	1/2" Oring x 3/4" NPT female 90	06-D04V	
60UB 12x12	3/4" Oring x 3/4" NPT female 90	06-D03V	
63SE 12x12	3/4" Male JIC x 3/4" Flange	06-D12M	
63SE 12x16	3/4" Male JIC x 1" Flange	06-D12I	
63SE 16x16	1" Male JIC x 1" Flange	06-D12G	
63SE 16x20	1" Male JIC x 1 1/4" Flange	06-D12P	
63SF 12x12	3/4" Male JIC x 3/4" Flange	06-D12N	
63SF 12x16	3/4" Male JIC x 1" Flange	06-D12J	
63SF 16x16	1" male JIC x 1" Flange	06-D12H	
63SF 16x20	1" Male JIC x 1 1/4" Flange	06-D12P	
63TA 06x06	3/8" JIC 45 Sweep	06-D09X	
63TA 08x08	1/2" JIC 45 Sweep	06-D08X	
63TA 10x10			

68HB-16-16 20046-011	Beaded Hose Barb To Male Pipe		
721FSO 04	1/4" O'ring Plug Allen Head	06-DC8M	III I
721FSO 06	3/8" Oring Plug Hex Head	06-DC6M	
721FSO 06A	3/8" Oring Plug Allen Head	06-D07M	
721FSO 08	1/2" Oring Plug	06-D05M	III I I I I I
721FSO 10	5/8" Oring Plug	06-D04M	
721FSO 12	3/4" Oring Plug	06-DC3M	III I I I I I
721FSO 16	1" Oring Plug	06-D02M	
721FSO 20	1 1/4" Oring Plug	06-D01M	III
721FSO 24	1 1/2" Oring Plug	06-D09L	
7400 06-14	3/8" JIC x metric (STS fitting)	06-E06C	
7400 12-22	3/4" Jic x Metric Fitting (MS18)	06-E01C	II
7400 12-27	3/4" JIC x 27mm Metric Fitting	06-E-TOP	III (ENGINE-OIL DRAIN) (HEATER HOSE)
7400 16-27	1" JIC x Metric (STS Fitting)	06-E05C	
830FS 06	3/8" JIC Cap	06-D03L	
830FS 08	1/2" JIC Cap	06-D02L	
830FS 10	5/8" JIC Cap	06-D01L	
830FS 12	3/4" JIC Cap	06-D09K	
830FS 16	1" JIC Cap	06-D08K	
839FS 06	3/8" JIC Plug	06-D08L	
839FS 08	1/2" JIC Plug	06-D07L	
839FS 10	5/8" JIC Plug	06-D06L	I
839FS 12	3/4" JIC Plug	06-D05L	
839FS 16	1" JIC Plug	06-D04L	
840FS 08	1/2" Tube Sleeve	06-D01J	
841FS 08	1/2" JIC Nut	06-D05J	
841FS 12	3/4" JIC Nut	06-D04J	
841FS 16	1" JIC Nut	06-D03J	
841FS 20	1 1/4" JIC Nut	06-D02J	
842FS 06	3/8" JIC Male Union	06-D09I	
842FS 08	1/2" JIC Mal Union	06-D08I	
842FS 10	5/8" JIC Male Union	06-D07I	
842FS 12	3/4" JIC Male Union	06-D06I	
842FS 16	1" JIC Male Union	06-D05I	
844FS 06	3/8" JIC 3way Male Tee	06-D04F	
844FS 08	1/2" JIC 3way Male Tee	06-D03F	
844FS 12	3/4" JIC 3way Male Tee	06-D02F	
845FS 06x06x04	3/8" JIC x 3/8" JIC x 1/4" NPT Tee	06-D07F	
845FS 08	1/2" JIC x 1/2" NPT Tee	06-D06F	
845FS 12	3/4" JIC x 3/4" NPT Tee	06-D05F	
845FSO 06	3/8" JIC x 3/8" Oring Tee	06-D02G	II
845FSO 08	1/2" JIC x 1/2" Oring Tee	06-D01G	
845FSO 12	3/4" JIC x 3/4" Oring Tee	06-D09F	I
845FSO 16	1" JIC x 1" Oring Tee	06-D08F	

6901-10-04

06-E01D I

845FSO 16	1" JIC x 1" Oring Tee	06-D12A	
848FS 06x02	3/8" JIC x 1/8" NPT	06-D06B	
848FS 06x04	3/8" JIC x 1/4" NPT	06-D04B	
848FS 06x06	3/8" JIC x 3/8" NPT	06-D03B	
848FS 06x08	3/8" JIC x 1/2" NPT	06-D01E	
848FS 08x04	1/2" JIC x 1/4" NPT	06-D05E	
848FS 08x06	1/2" JIC x 3/8" NPT	06-D02E	
848FS 08x08	1/2" JIC x 1/2" NPT	06-D09A	
848FS 08x12	1/2" JIC x 3/4" NPT	06-D06A	
848FS 10x08	5/8" JIC x 1/2" NPT	06-D08A	
848FS 10x12	5/8" JIC x 3/4" NPT	06-D05A	
848FS 12x08	3/4" JIC x 1/2" NPT	06-D07A	
848FS 12x12	3/4" JIC x 3/4" NPT	06-D04A	
848FS 12x16	3/4" JIC x 1" NPT	06-D03A	
848FS 16x12	1" JIC x 3/4" NPT	06-D02A	
848FS 16x16	1" JIC x 1" NPT	06-D01A	
848FSO 06x04	3/8" JIC x 1/4" Oring	06-D05D	
848FSO 06x06	3/8" JIC x 3/8" Oring	06-D04D	
848FSO 06x08	3/8" JIC x 1/2" Oring	06-D02D	
848FSO 08x06	1/2" JIC x 3/8" Oring	06-D03D	
848FSO 08x08	1/2" JIC x 1/2" Oring	06-D01D	XII
848FSO 08x10	1/2" JIC x 5/8" Oring	06-D08C	X
848FSO 08x12	1/2" JIC x 3/4" Oring	06-D06C	X
848FSO 08x16	1/2" JIC x 1" Oring	06-D02C	
848FSO 10x10	5/8" JIC x 5/8" Oring	06-D07C	
848FSO 12 x 10	3/4" JIC x 5/8" Oring	06-D05C	V
848FSO 12x08	3/4" JIC x 1/2" Oring	06-D09C	
848FSO 12x12	3/4" JIC x 3/4" Oring	06-D04C	XXXXXXIX
848FSO 12x12	3/4" JIC x 3/4" Oring	06-D11A	
848FSO 12x12	3/4" JIC x 3/4" Oring	06-D11B	
848FSO 12x16	3/4" JIC x 1" Oring	06-D01C	XX X
848FSO 12x20	3/4" JIC x 1 1/4" Oring	06-D08B	
848FSO 16x12	1" JIC x 3/4" Oring	06-D03C	
848FSO 16x16	1" JIC x 1" Oring	06-D09B	
848FSO 16x20	1" JIC x 1 1/4" Oring	06-D07B	
848LFSO 12	3/4" JIC x 3/4" Oring Long	06-E02A	V
848LFSO 16	1" JIC x 1" Oring Long	06-E01A	
849FS 06x02	3/8" JIC x 1/8" NPT 90	06-D02E	
849FS 06x04	3/8" JIC x 1/4" NPT 90	06-D01E	
849FS 06x06	3/8" JIC x 3/8" NPT 90	06-D09D	
849FS 06x08	3/8" JIC x 1/2" NPT 90	06-D08D	
849FS 08x08	1/2" JIC x 1/2" NPT 90	06-D07D	
849FS 12x12	3/4" JIC x 3/4" NPT 90	06-D06D	
849FSO 06x04	3/8" JIC x 1/4" Oring 90	06-D01F	

849FSO 06x06	3/8" JIC x 3/8" Oring 90	06-D09E	
849FSO 06x08	3/8" JIC x 1/2" Oring 90	06-D08E	
849FSO 08x06			
849FSO 08x08	1/2" JIC x 1/2" Oring	06-D07E	
849FSO 10x10	5/8" JIC x 5/8" Oring	06-D06E	
849FSO 12x12	3/4" JIC x 3/4" Oring 90	06-D05E	
849FSO 16x12	1" JIC x 3/4" Oring	06-D04E	
849FSO 16x16	1" JIC x 1" Oring 90	06-D03E	
851FS 06x06	3/8" JIC x 3/8" NPT Tee	06-D08G	
851FS 12x12	3/4" JIC x 3/4" NPT Tee	06-D07G	
851FSO 06	3/8" JIC x 3/8" Oring Tee	06-D03H	
851FSO 08	1/2" JIC x 1/2" Oring Tee	06-D02H	
851FSO 12	3/4" JIC x 3/4" Oring Tee	06-D01H	
851FSO 16			
851FSO 20	1 1/4" JIC x 1 1/4" Oring Tee	06-D09G	
854FS 08x08	1/2" JIC x 1/2" NPT 45	06-D01I	
854FS 12x12	3/4" JIC x 3/4" NPT 45	06-D09H	
854FSO 08x08	1/2" JIC x 1/2" Oring 45	06-D04I	
854FSO 12x10	3/4" JIC x 5/8" Oring 45	06-D03I	
854FSO 12x12	3/4" JIC x 3/4" Oring 45	06-D02I	
871FS 06	3/8" JIC x 3/8" JIC Swivel Tee	06-D08H	
871FS 08	1/2" JIC x 1/2" JIC Swivel Tee	06-D07H	
871FS 10	5/8" JIC x 5/8" JIC Swivel Tee	06-D06H	
871FS 12	3/4" JIC x 3/4" JIC Swivel Tee	06-D05H	
871FS 16	1" JIC x 1" JIC Swivel Tee	06-D04H	
872FS 06	3/8" JIC x 3/8" JIC Swivel Tee	06-D06G	
872FS 08	1/2" JIC x 1/2" JIC Swivel Tee	06-D05G	
872FS 12	3/4" JIC x 3/4" JIC Swivel Tee	06-D04G	
872FS 16	1" JIC x 1" JIC Swivel Tee	06-D03G	
881FS 08x08	1/2" NPT x 1/2" Female JIC	06-D05W	
883FS 08x06	1/2" x 3/8" JIC Reducer	06-D03K	
883FS 10x08	5/8" x 1/2" JIC Reducer	06-D02K	X
883FS 12x06	3/4" x 3/8" JIC Reducer	06-D01K	
883FS 12x08	3/4" x 1/2" JIC Reducer	06-D09J	
883FS 12x10	3/4" x 5/8" JIC Reducer	06-D08J	
883FS 16x12	1" x 3/4" JIC Reducer	06-D07J	
883FS 20x16	1 1/4" x 1" JIC Reducer	06-D06J	
9068-06-12 20001-011	Male JIC x Male Metric W/Seal		
9235-12-06 20002-011	Male Metric x Female NPT		
9325-02-10x1.0 20038-011	Adapt-All Adapter - Test Unit Fitting		
9500-12mm 20003-011	Bonded Seal For Metric Thread		
ABAX1000-10 20007-011	Straight Tube Adapter To JIC Male #10		
ABAX1000-14-12 20010-011	Strght Tube Adapter - JIC Male #14-12		
ABAX1000-16 20009-011	Straight Tube Adapter To JIC Male #16		

ABAX1000-6 20006-011	Straight Tube Adapter To JIC Male #6		
ABAX1000-8 20005-011	Straight Tube Adapter To JIC Male #8		
BSE12HB10S11	1" oring x 1 1/4" Suction fitting	06-D10H	
C-16-2 20057-011	RV5-16 Cavity Plug		
C1200S	3/4" Check Valve	06-E07F	
C1600S	1" Check Valve	06-E01D	
C800S	1/2" Check Valve	06-E06F	1
CDC-0126	Aluminum Manifold	06-M03A	
CDC-0127	Aluminum Manifold	06-M04A	
CR44758.12	Brake/2speed Fitting for MS35/50	06-E03C	1111
DTS-2349	1" Split Flange (Use w/ "F")	06-D12C	V LHT
DTS-2455	1" Split Flange (Use with "E")	06-D12D	11
FF5163-1212S 20021-011	Hydraulic Fitting		
FF5163-1616S 20022-011	Hydraulic Fitting		
FF5164-1212S 20023-011	Hydraulic Fitting		
FF5164-1616S 20024-011	Hydraulic Fitting		
FT-0710-ZP	Hose Barb (FT-1075)	06-D11N	
FT-075	3/4" Hose Barb	06-D11N	
FT-100	1" Hose Barb	06-D11M	11
FT-1012	1" NPT x 1 1/4" Hose Barb	06-D11M	
FT-1215	1 1/4" NPT x 1 1/2" Hose Barb	06-D11L	
FT-125	1 1/4" Hose Barb	06-D11L	111
FT-150	1 1/2" Hose Barb	06-D11K	1111
FT-1520	1 1/2" Hose Barb	06-D11J	
FT-200	2" Hose Barb	06-D11I	11
FT-250	2 1/2" Hose Barb	06-D11H	1
GP-6400-12-12-4 20031-011	PCC 3/4" JIC Diag Tee Test Unit Fitting		
GP-6504-08-08-4 20030-011	PCC 1/2" JIC Diag Tee Test Unit Fitting		1
GP-6504-12-12-4 20029-011	PCC 3/4" JIC Diag Tee Test Unit Fitting		
HA-32 20011-011	Adapter SAE To Hose Barb		
HA90-32 20012-011	Adapter 90 SAE To Hose Barb		
HAS90-48 40 20014-011	Split Flange Adptr 3"Port - 2 1/2"Hose		
HC075	3/4" Hose Clamp	06-K02A	
HC100	1" Hose Clamp	06-K02A	
HC125	1 1/4" Hose Clamp	06-K02B	
HC150	1 1/2" Hose Clamp	06-K02C	
HC200	2" Hose Clamp	06-K02D	
HC215	Hose Clamp	06-K02E	
HC238	Radiator Hose Clamp	06-K02F	
HC250	2 1/2" Hose Clamp	06-K03A	
HFP-1843	1/2" Breather		11
LT-50 20063-013	Gresen Check Valve	06-E07B	1
NB6842-12-12 20013-011	Flange		
OM-0812-90	1/2" oring x 3/4" suction fitting	06-D10M	

OM-1216	3/4" Oring x 1" Suction	06-D11F	
OM-1216-90	3/4" Oring x 1" Suction	06-D10I	
OM-1220-90	3/4" Oring x 1 1/4" Suction Fitting	06-D10K	
OM-12-90	3/4" Oring x 3/4" Suction Fitting	06-D10L	
OM-1620-90	1" oring x 1 1/4" Suction fitting	06-D10H	
OM-16-90	1" oring x 1" Suction Fitting	06-D10J	
OM-2024	1 1/4" Oring x 1 1/2" Suction	06-D11E	
OM-2024-90 20044-011	1 1/4" oring x 1 1/2" Suction	06-D10G	1
OM-2424	1 1/2" Oring x 1 1/2" Suction	06-D11D	
OM-2432-90	1 1/2" Oring x 2" Suction	06-D10E	
OM-24-90	1 1/2" oring x 1 1/2" Suction	06-D10F	
OMC 2024-90 20044-011	Flange Head 90 Hose Barb		
ORF 24-90 20043-011	1 1/2" Oring Flange x 1 1/2" Suction		
ORF-2432-90	2" Suction x 1 1/2" Flange	06-D10D	
ORF-3224-90	1 1/2" Suction 2" Flange	06-D10C	
ORF-32-90	2" Suction w/ Flange	06-D10B	VI
ORF-40-90	2 1/2" Suction x 2 1/2" Flange	06-D10A	
PF800S 20049-013	1/2" Needle Valve w/Check	06-E03F	
PN1200S 20053-013	3/4" Needle Valve	06-E05F	
PN400S 20052-013	1/4" Needle Valve	06-E01F	
PN600S 20050-013	3/8" Needle Valve	06-E02F	X
PN800S 20051-013	1/2" Needle Valve	06-E04F	
PV-1315	1 1/2" Suction Fitting	06-D11G	
S10-3-8	1/2" Quick Coupler 1/2" Oring	06-D11R	
S10-4	5/8" Quick Coupler 1/2" NPT	06-E07B	
S10-4-10	5/8" Quick Coupler 5/8" Oring	06-D11Q	
S10-6-12	3/4" Quick Coupler 3/4" Oring	06-D11P	
S10-8-16	1" Quick Coupler 1" Oring	06-D11O	
S45-4	1/2" Female Pioneer Quick Coupler	06-E04D	
S71-4P	1/2" Male Pioneer Quick Coupler	06-E03D	
SBE25HB30SM11/SFK	3" Suction Flange to 2 1/2" Hose Barb	06-D-TOP	
SMD20-1/4NPT 20039-011	Test Point Fitting		
SMK20-7/16UNF-VE 20040-011	Test Point Fitting		
Z63UA 12x12 20055-011	High Pressure Sweep	06-D10Q	1
Z63UA 16x16 20004-011	1" High Pressure Sweep	06-D10N	
Z63UC 12x12 20056-011	3/4" Long High Pressure Sweep	06-D10P	
Z63UC 16x16 20059-011	90 Sweep	06-D10O	
			1

ORF 4048-90

Conveyor Chain For 07016 Tupling 4RSPH65AH

AFE #	Location	Description	Brand
2003-00229	Primary (2)	1/2x68.5x50mm 1x120-2x60 2DNPL-1STPL Flex Lockwood Style 109+	Broekema
2003-00230	Secondary (2)	7/16x68.5x50mm 3x60 5DNSRT-1STSRT 59+	Noffsinger
2003-00231	Deviner (2)	5/8x68x150mm 2x60 STSRT 65+	Broekema
2003-00232	Rear Cross	7/16x48x45mm 2x60 STSRT 230+	Broekema
2003-00187	Lower Side	7/16x65x45mm 3x60 STSRT - 339+ (50') Clips Loose One End	Broekema
2003-00233	Upper Side	7/16x65x45mm 3x60 10STSRT-1UPSRT 280+	Broekema
2003-00234	Bin Fill Conv	7/16x35x45mm 2x60 5DNSRT-1STSRT 238+	Broekema
2003-00235	Bulkloader	7/16x40x45mm 2x60 5DNSRT-1STSRT 179+	Broekema
2003-00236	Belted Stone Conv	7/16x14x28mm 2x60 ST PL 460+	Broekema

Approved By: Dealer _____

Owner _____

HYDRAULICS FINISH MATERIALS LIST

BEGINNING DATE 7-11-07 PROJECT NO. 027907 TYPING "OTHER FINISH"
 END DATE 7-27-07

QTY	PART NUMBER	DESCRIPTION
77	2035-00007	SR-14 4" SUPERIOR
16	2035-00008	SR-15 5" SUPERIOR
93	2035-07002	STAND OFF 1 1/2"
12	2035-03001	R11A41
4	2035-04001	TAPERED NOSE CONE
16	2035-05004	R37ABD1 4" U1B ROLLER
23	2035-01001	3 1/2" KRYPTANE W/5" FLANGE
16	2035-01000	3 1/2" KRYPTANE W/OUT FLANGE
60	2035-01009	3 1/2" STEEL W/5" FLANGE
28	2035-01008	3 1/2" STEEL W/OUT FLANGE
1	2035-01004	3 1/2" RUBBER W/8" FLANGE
6	2035-03000	R11AB1
4	2035-07001	1" STAND OFF
4	2035-03000	R11AB1
12	2035-01015	3 1/2" Rubber Roller w/5" Flange
8	2035-01016	3 1/2" Rubber Roller w/o Flange
2	30025-013	CENTER BLADE
2	30043-013	3/4" FULL WIDTH DIGGER BLADE
8	2035-H50M14R1E4X	PRIMARY
6	2035-H45M10RBSX	BULK/CROSS/BIN FILL/SIDE RETURN
3	2035-H45M10E4	SIDE (A.H.)
2	2035-H28M12B5	STONE
3	2035-H45M10RE4X	SIDE RETURN
6	2035-H50M12RE4X	SECONDARY

HYDRAULICS FINISH MATERIALS LIST

BEGINNING DATE
END DATE

PROJECT NO.

QTY	PART NUMBER	DESCRIPTION
2	20036-006	505-1210 CLAMP
2	20042-006	705-1013 CLAMP
1	660-1508 ²⁰⁰³⁹⁻⁰⁰⁶	HEATER HOSE NIPPLE
1	660-1524 ²⁰⁰⁴¹⁻⁰⁰⁶	HEATER HOSE NIPPLE
8	20062-001	BATTERY NUT
4	2001-0064	BATTERY (VEST. Auto)
1	20039-001	FUEL PUMP
1	2015-011	FUEL FILTER
1	2015-033	FUEL FILTER HEAD
10 GAL	2036-0004	ANTIFREEZE
52.3 FT	20262-001	2/0 CABLE
14	20263-001	3/8 EYE
10	20264-001	1/2 EYE
24	20261-001	SOLDER PELLET 3/0
4	DSR 2460	24" COULTER BLADE
1	22080-023	8" TURBO # PRECLEANER
4	31011-007	COULTER CAP PROTECTOR
3	20259-001	RED HEAT SHRINK
3	20260-001	BLACK HEAT SHRINK
35 SQ FT	20007-029	DIAPHRAM BELT
30 FT	20018-029	SKIRT RUBBER 5"
1	22030-023	A/C CONDENSER
5 SQ FT	FOAM	WHITE 2"
1	20124-006	1/2" TREATED PLYWOOD
38 SQ FT	20012-029	3/8 BELTING
40 SQ FT	UHMW 16	
47 SQ FT	UHMW 08	
35 SQ FT	UHMW 04	
1 SQ FT	UHMW 12	

Serial Number: 07016
 Customer: Tupling Farms
 Dealer: HJV

Standard Equipment:		Special Notes
Standard Equipment:		
Full Width Digger Bcd		
QSM 360 HP Cummins Engine		
4 Wheel Drive		
Rear Tires: 6600-43 x 25 Terra		1000/50 R25 NHS
Front Tires: 1400-24 x 12 Tires		
35" Cross		
MS 50 Rear Motors		
Front Steps		
Strobe Light		
* 40" Air Head		
* 50" Air Head		
* 65" Air Head	XX	
	Options	
Engine		
* QSM-360 HP Cummins		
* QSM-400 HP Cummins		
* 9 Liter- 350 HP John Deere		
* 13.5 Liter 400 HP John Deere		
* QSX-450 HP Cummins		
* QSX -510HP Cummins	XX	
* 13.5 Liter 500 John Deere		
* 13.5 Liter 450 John Deere		
Rear Tires		
* 6600-43 x 25 Terra	XX	
* 6800-50 x 32 Terra		
Front Tires:		
* 17.5 x 24		
* 1400 x 24 x 12	XX	
* 1600 x 24 x 12		
* 4800 x 25 x 12		
Steering:		
* No Rear Steering		
* 37 Degree Rear Steering	XX	
Front Wheel Motors:		
* MS 18		
* MS 18 Plus 20%	XX	
Rear Wheel Motors:		
* MS 50	XX	
* MS 83		
Row Spacing		
* 32" with 30" chain		
* 34" with 32" chain		
* 36" with 33" chain	XX	
* 36" with 34" chain		
* 38" with 36" chain		

W.C.L.

Serial Number: _____

Customer: _____

Dealer: _____

Digger Blade Bracket		
* Standard		
* Rock Guard	xx	
Digger Blades		
* Regular Straight		
* Extended Straight		
* Clod Blades		
* Sand Blades		
* Full Width Solid Blade 3/4" x 12"	xx	Plastic under blades 15" centers with 1" x 4" back bone
* Regular Straight w/ Plastic Under		
* Full Width Solid 3/4" X 12 w/ Bevel		
* Full Width Solid 3/4" X 12 w/ Rod		1" side plates and 3/4" centers rails all 3
Primary Bed		
* Full Width Common Lift		1" pivot bolts on digger bed brackets
* Full Width Side to Side Control	xx	
Primary Drive		
* Top Drive		
* Reverse Drive	xx	Lockwood Flex Style
Primary Bed Chains		
* Single Width Belted		Build bed with divider in the center and double rollers for support
* Double Width Belted	xx	
Primary Belted Chains		
* 45 mm All Straight Belted Chains		
* 45 mm 2 Down & 1 Straight Belted Chains		
* 50 mm All Straight Belted Chains		
* 50 mm 2 Down & 1 Straight Belted Chains	xx	69" PL
* 50 mm 1 Up & 2 Down Belted Chains		
* 56 mm All Straight Belted Chains		
Secondary Bed Chains		
* Single Belted SRT		
* Full Belted SRT	xx	built like Mc Crums made to fit
Secondary Belted Chains		
* 45 mm All Straight SRT		
* 45 mm 2 Down & 1 Straight SRT		
* 50 mm All Straight SRT		
* 50 mm 5 Down & 1 Straight SRT	xx	68.5"
2nd Secondary		
* No 2nd Secondary	xx	
* 2nd Secondary Belted Chain		
2nd Secondary Belted Chain Width		
* No Second Secondary	xx	
* Single Belted Chains		
* Full Belted SRT		
2nd Secondary Belted Chains		
* No 2nd Secondary	xx	
* 45mm All Straight SRT		
* 45mm 2 Down & 1 Straight SRT		
* 50mm All Straight SRT		
* 50mm 2 Down & 1 Straight SRT		

McCrum's
30043-013
30054-013
PARAMOUNT

2
W. E. L.

Serial Number: _____

Customer: _____

Dealer: _____

2nd Secondary Star Table Options		
* No Star Table Option		
* 5 Stars with Distributor Stars on Cross		
* 6 Stars with 2 Adjustable Smooth Rollers and Distributor Stars on Cross		
* 6 Stars with 2 Adjustable Smooth Roll and Distributing stars on cross, extra star roll on left	XX	
Vine Belt Options Secondary		
*No Vine Belt	XX	
*Full Width Vine Belt w/Fan and 3 Stars w/Distributor Stars		
Primary Gear Box Option		
* 6,000 Hydraulic Motor		
* 6,000 Hydraulic Motor w/Gearbox	XX	
* VIS Direct Drive Motor		
Secondary Gear Box Option		
* 6,000 Hydraulic Motor w/Chain		
* 6,000 Hydraulic Motor w/Gear Box	XX	
2nd Secondary Gear Box Option		
*No Secondary	XX	
*6,000 Hydraulic Motor w/Chain		
*6,000 Hydraulic Motor w/Gear Box		
Deviner Gear Box Option		
* 6,000 Hydraulic Motor w/ Chain		
* 6,000 Hydraulic Motor w/ Gear Box	XX	
Reversing Valve Option		
*No Reversing Valves		
*Primary	XX	
*Secondary-Deviner	XX	
*2nd Secondary		
Vibrator		
*No Vibrator		
*Rotating Hydraulic Shaker Primary		
*Rocking Hydraulic Shaker Primary	XX	built like Lavesquesx
*Rotating Hydraulic Shaker Secondary		
*Lift in Shaker		
Override Chain		
*150 mm	XX	
*180 mm		
*200 mm		
Vine Coulters		
*Double Disk Coulters	XX	
*Kickers		
Bulk Loader		
*35"		
*40"	XX	14" sides
Bulk Loader Chain		
*40 mm All Straight SRT		
*45 mm 1 at 5 dn SRT	XX	

3
APET

Serial Number: _____

Customer: _____

Dealer: _____

Self Leveling System		
*No Leveling System		
*Hydraulic Rear Cross & Side Elevator	XX	
Rear Cross		
*35" Cross		
*40" Cross		
*48" Cross	XX	
Rear Cross Chain		
* 40 mm All Straight SRT		
* 45 mm All Straight SRT	XX	
Rear Cross Table Option		
*No Star Table Chain Only	XX	
*Star Table		
Vine Belt Option-Top Side Elevator Return Conveyor		
*No Vine Belt		
*40" Vine Belt w/Fan and Start		
*50" Vine Belt w/Fan and Stars		
*65" Vine Belt w/Fan and Stars	XX	with 2 stars with pinch roll feeding belt
Lower Side Elevator Ellis Star Table		
*No Ellis Table	XX	
*Ellis Table		
M-Table		
*No M-Table Option	XX	
*40" with Dist Stars		
*50" with Dist Stars		
*65" with Dist Stars		
Sort Table		
*No Sort Table	XX	
*35"		
*40"		
Sort Table Belted Chain		
*No Belted Chain	XX	
*45mm All Straight SRT		
*50mm All Straight SRT		
Bin		
*No Bin		
*Bin with In Tank Fill Conveyor and Sonic Control	XX	
Camera Systems:		
Stone Conveyor		
Hook Chain		
Belted Chain	XX	
Solid Floor	XX	open where stones drop in at the beginning
Deflector for AirHead Discharge:		

W.E.T.

Serial Number: _____

Customer: _____

Dealer: _____

Comments:

Reference numbers on controllers

Hump shaft, lower side elevator shaker
smooth roll spacing, RH & LH star speed
Stone Conveyor, boom, Cross and bin fill

Additional Flow Controls

Noffsinger stars green ring

Secondary to fit so they don't shift

1" pivot holes in blade mounts with shoulder bolts blades set ahead like the last two

Cross to be built like Teppers

Add two more rollers to return of side elevator use two with flanges and put lower roller in ret to keep from wrapping

Idler rollers on primary spaced out

Orficed flow control for the fan motor

Service kit to be supplied basic fittings

Customer: <i>Robert C. Supley</i>	Date: <i>01 18 07</i>
Dealer: <i>[Signature]</i>	Date: <i>08/01/07</i>
Manufacturer: <i>[Signature]</i>	Date: <i>12/21/06</i>

Chain/Location	Qty	Rod Size	Width	MM	LPR	Pattern	Covering
Primary	2	0.50	69	50	109	2DN1ST	PL
Secondary	2	0.44	68.5	50		1ST 5DN	SRT
Deviner	2	0.63	68	150		ST	SRT
Cross	1	0.44	48	45		ST	SRT
Lower Side	1	0.44	65	45		ST	SRT
Upper Side	1	0.44	65	45		10ST 1UP	SRT
BulkLoader	1	0.44	40	45		1 ST 5DN	SRT
Bin Fill	1	0.44	36	45		1 ST 5 DN	SRT
Belted Stone	1	.044	14	28		ST	PL

W.C.L.

Qty.	Parts Number	Description	Date Needed
	# 027832		
11	30001-014	LIGHT BRKT	
1	30029-019	SV4 BRKT	
1	30004-019	DTS 0150 BRKT	
1	31001-019	FLOW DIVIDER BRKT	
2	36002-019	373 BRKT	
1	30004-019	150 BRKT	
17	30009-019	RDRS BRKT	
1	30012-019	CRV5 BRKT	
6	31015-019	A.H. CLEANER VALVE BRKT	
1	30018-019	DOUBLE FILTER HEAD BRKT	
1	30021-019	MV5 4 SECTION BRKT	
1	30024-019	4276 BRKT	
1	300 34 -019	MV4 BRKT	
15	30027-019	RDRS w/ Actuator BRKT	
4	30028-019	REVERSING VALVE BRKT	
1	30031-019	FUEL PUMP BRKT	
1	30040-019	MV2 BRKT	
2	30048-019	0126 BRKT	
1	30057-019	0155 BRKT	
2	30068-019	SINGLE RET. FILTER BRKT	
1	30069-019	DOUBLE RET. FILTER BRKT	
6	30070-019	FLOW CONTROL GAUGE BRKT	

027176
027832

Steel Line, Conduit, and Hydratorb

HYDTB06 3/8"Steel	HYDTB08 1/2"Steel	HYDTB10 5/8"Steel	HYDTB14 7/8"Steel	HYDTB14H Heavy 7/8"	HYDTB16 1"Steel	113120 Hydratorb	EMT050 1/2"Conduit	EMT075 3/4"Conduit
51	66	55	63	58	198	24	30	120
62	64	53	61	48	200	12	12	45
60	72	209	59	66	240	18	62	64
61	74	211	57	57	48	20	64	76
59	150	213	72	72	240	38	30	16
46	39	215	75	59	48	38	18	75
84	92	50	86	45		24	76	54
52	29	48	86			14	57	81
52	239	72	237			8	35	81
	52	70	235			72	53	81
	52		233			18	41	81
	54		231			14	60	81
	52		80			16	52	39
	21		80			13	75	32
	96		80			10	28	38
	201		80			10	14	16
	200		54			24	52	27
	71		56			19	22	84
	57		38			8	65	101
	105		38			8	41	102
	104		24			39	46	28
	102		240			18	36	22
	101		151			19	44	103
	34		71			50	65	24
	36		196			8	24	86
	38		186			8	64	86
	40		180			15	68	86
	123		240			21	24	50
			48			18	24	50
			40			7	24	28
			72				30	
			63				37	
							25	
							44	
							113	
							87	
							98	
							37	
							30	
							92	
							26	
							12	
							35	
							20	
							27	
							24	
							14	

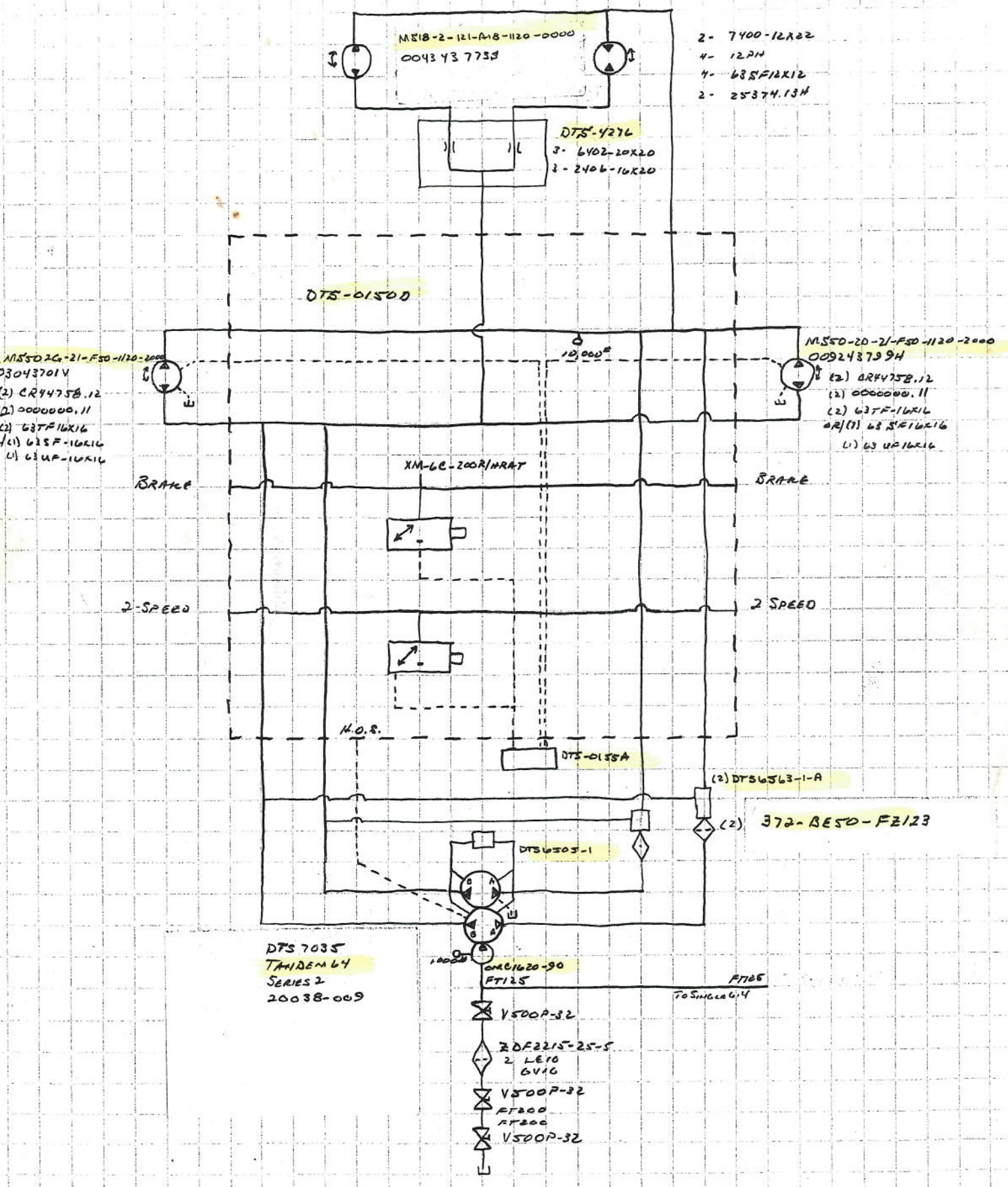
24
14

Detail List

027832
02775

Part#	Description	Qty
100037	3/8" Steel Line Clamp	XXX
100050	1/2" Steel Line Clamp	XX ^v XXIII ^v XX ^v
100062	5/8" Steel Line Clamp	XXX ^v X
100087	7/8" Steel Line Clamp	XXXX ^v XXX ^v X
100100	1" Steel Line Clamp	XXX ^v X X X
100125	1 1/4" Steel Line Clamp	
100150	1 1/2" Steel Line Clamp	
100200	2" Steel Line Clamp	
100225	2 1/4" Steel Line Clamp	
100250	2 1/2" Steel Line Clamp	
ABAX1000-06	Straight Tube Adapter to JIC Male #6	III ^v III ^v III ^v III ^v
ABAX1000-08	Straight Tube Adapter to JIC Male #8	III ^v III ^v III ^v III ^v III ^v V III ^v V III ^v
ABAX1000-10	Straight Tube Adapter to JIC Male #10	III ^v III ^v III ^v III ^v
ABAX1000-14-12	Strght Tube Adptr to JIC Male #14-12	X III ^v III ^v III ^v X III ^v III ^v III ^v III^v III^v III^v III^v III ^v V III ^v III ^v /
ABAX1000-16	Straight Tube Adapter to JIC Male #16	IIII
BA19-06	3/8" Replacement Sleeve	
BA19-08	1/2" Replacement Sleeve	
BA19-10	5/8" Replacement Sleeve	
BA19-14	7/8" Replacement Sleeve	
BA19-16	1" Replacement Sleeve	
BAX1100 06	3/8" NPT Female x 3/8" Tube	
BAX1100 08	1/2" NPT Female x 5/8" Tube	
BAX1100 10	1/2" NPT Female x 5/8" Tube	
BAX1100 14	3/4" NPT Female x 7/8" Tube	
BAX1200 06	3/8" Tube Union	
BAX1200 08	1/2" Tube Union	
BAX1200 10	5/8" Tube Union	
BAX1200 14	7/8" Tube Union	II I
BAX1200 16	1" Tube Union	II
BAX3100 06	3/8" NPT x 3/8" Tube Tee	
BAX3100 08	1/2" NPT x 1/2" Tube Tee	III ^v
BAX3100 10	1/2" NPT x 5/8" Tube Tee	
BAX3100 14	3/4" NPT x 7/8" Tube Tee	III ^v III ^v I
BAX3100 16	1" NPT x 1" Tube Tee	
BAX3200 08	1/2" Tube Tee	
BAX3200 14	7/8" Tube Tee	
BAX3200 16	1" Tube Tee	

1/10/07
 # 07016
 TUPLING FARMS
 4RSPA W/65" TANK - FFGSME
 1PBL3 - LEVELING



- 2- 7400-12R22
- 4- 12PA
- 4- 63SF16X12
- 2- 25374.13H

- MS5026-21-F50-1120-2000
- 03043701V
- (2) CR475B.12
- (2) 0000000.11
- (2) 63TF16X16
- (1) 63SF-16X16
- (1) 63UF-16X16

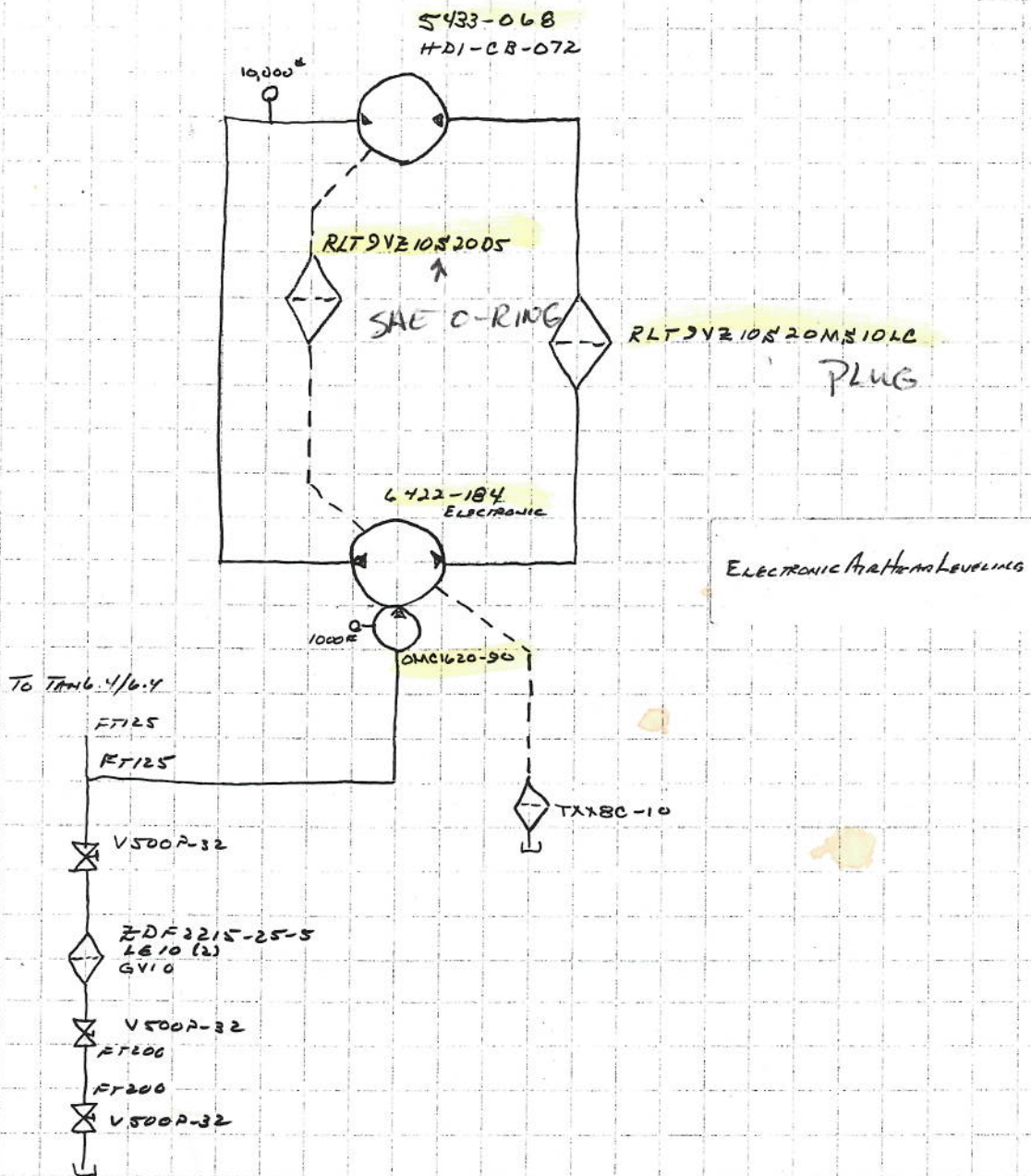
- MS50-20-21-F50-1120-2000
- 0092437994
- (2) CR475B.12
- (2) 0000000.11
- (2) 63TF-16X16
- (1) 63SF16X16
- (1) 63UF16X16

DTS 7035
 TANDEM L4
 SERIES 2
 20038-009

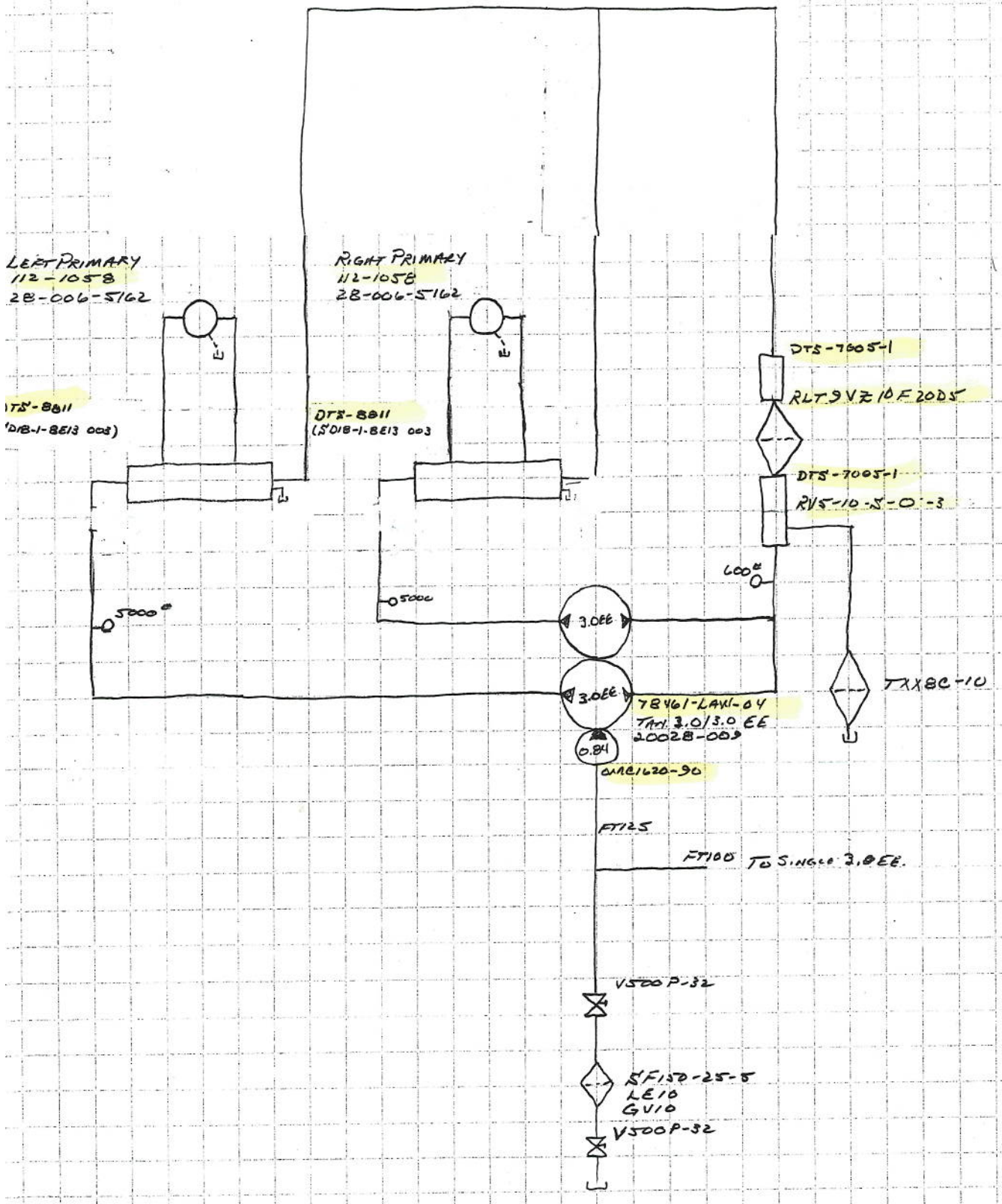
FT125
 TO SINGLE 6:4

- V500P-32
- 2DF2215-25-5
- 2 LE10
- GV16
- V500P-32
- FT200
- FT200
- V500P-32

1/10/07
 #07016
 TURLING FARMS
 NRSPPH w/65" THICK AFFETABLE
 ELECTRONIC LEVELLING

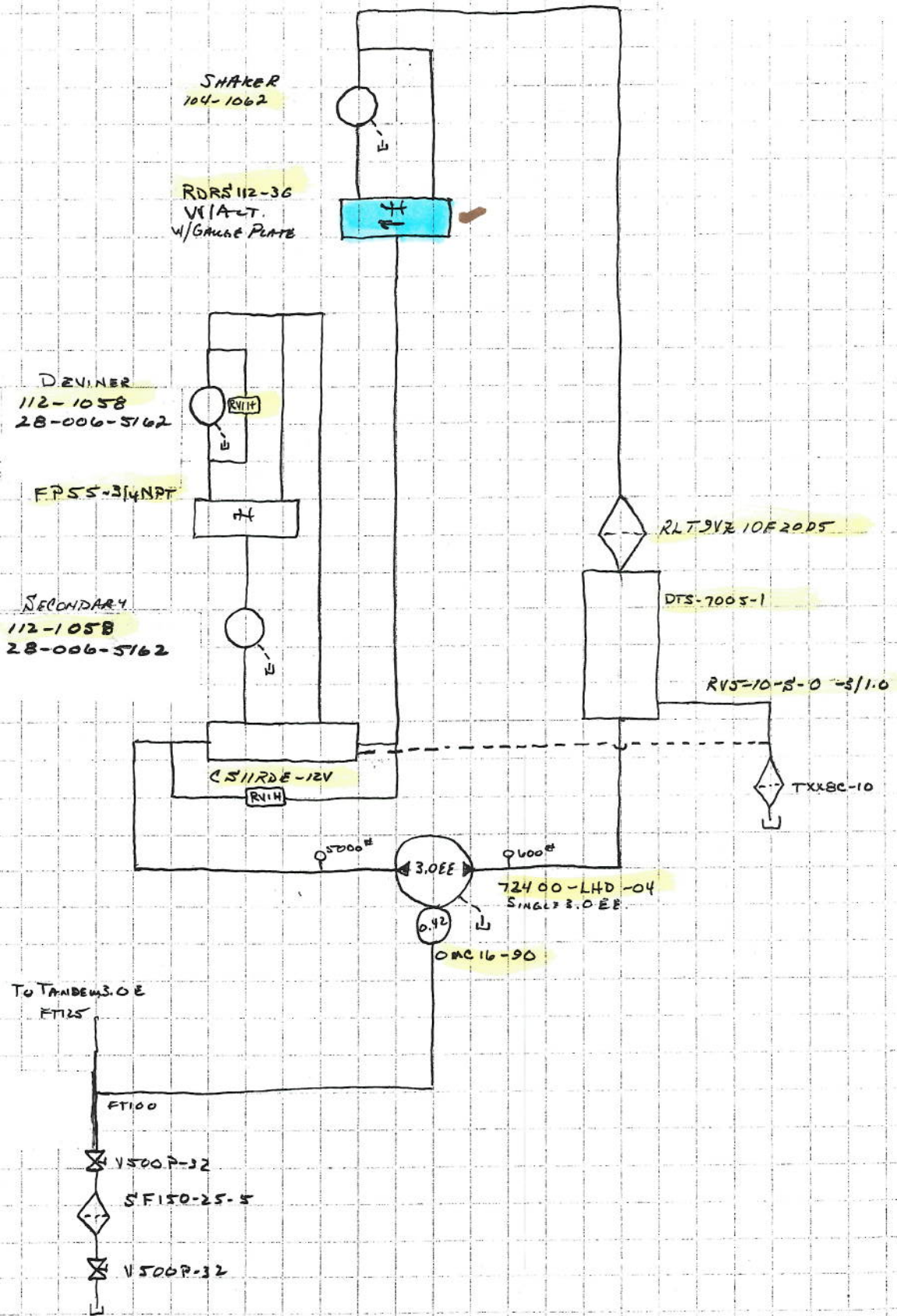


1/10/07
 # 07016
 TUPLING FARMS
 4RSAT W/65" Tank-AFETABLE
 ELECTRONIC LEVELING



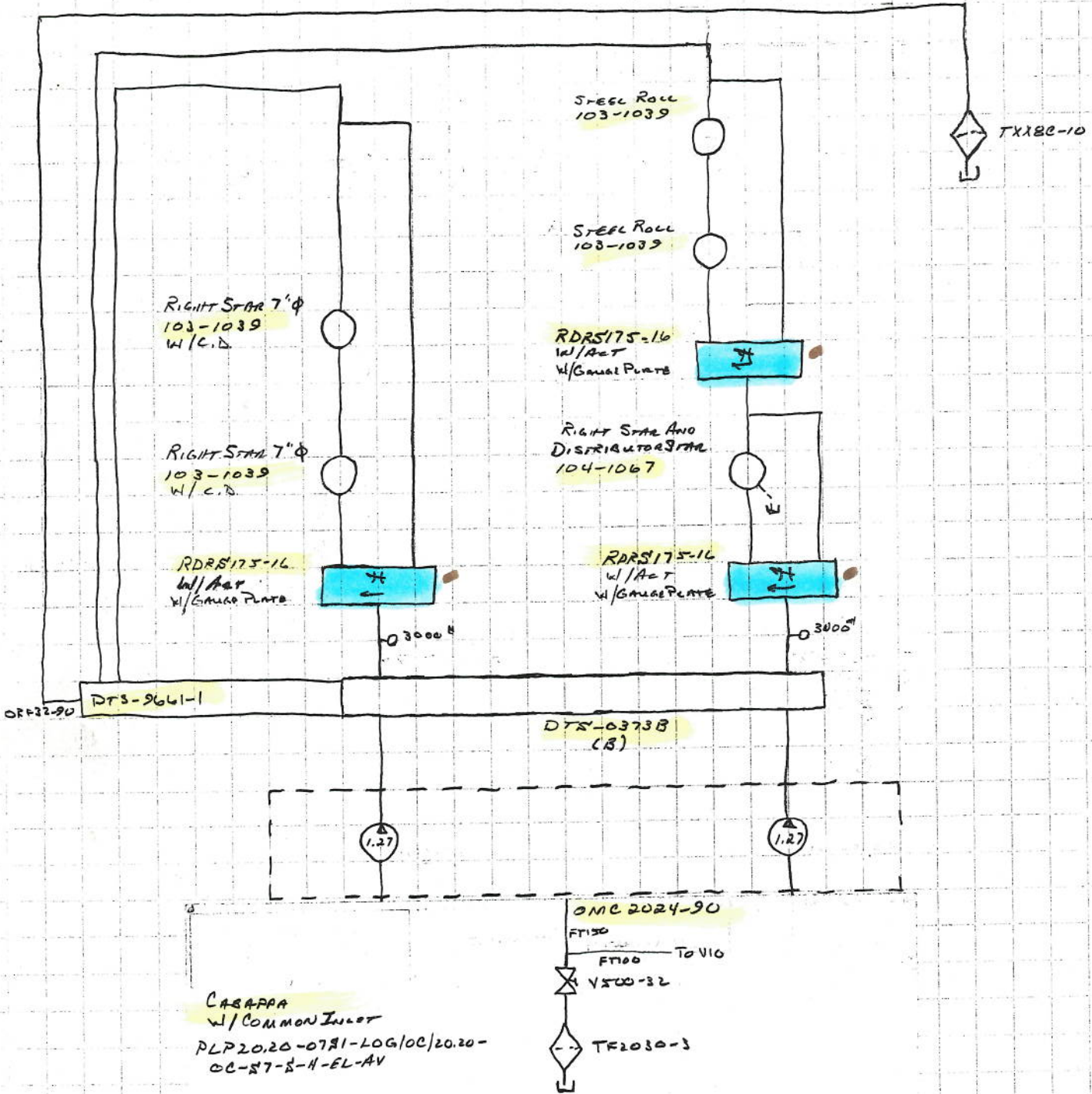
SECONDARY CIRCUIT

1/10/07
 # 07016
 TUPLING FARMS
 4RSPH W/65" TANK-AFETABLE
 ELECTRONIC LEVELING

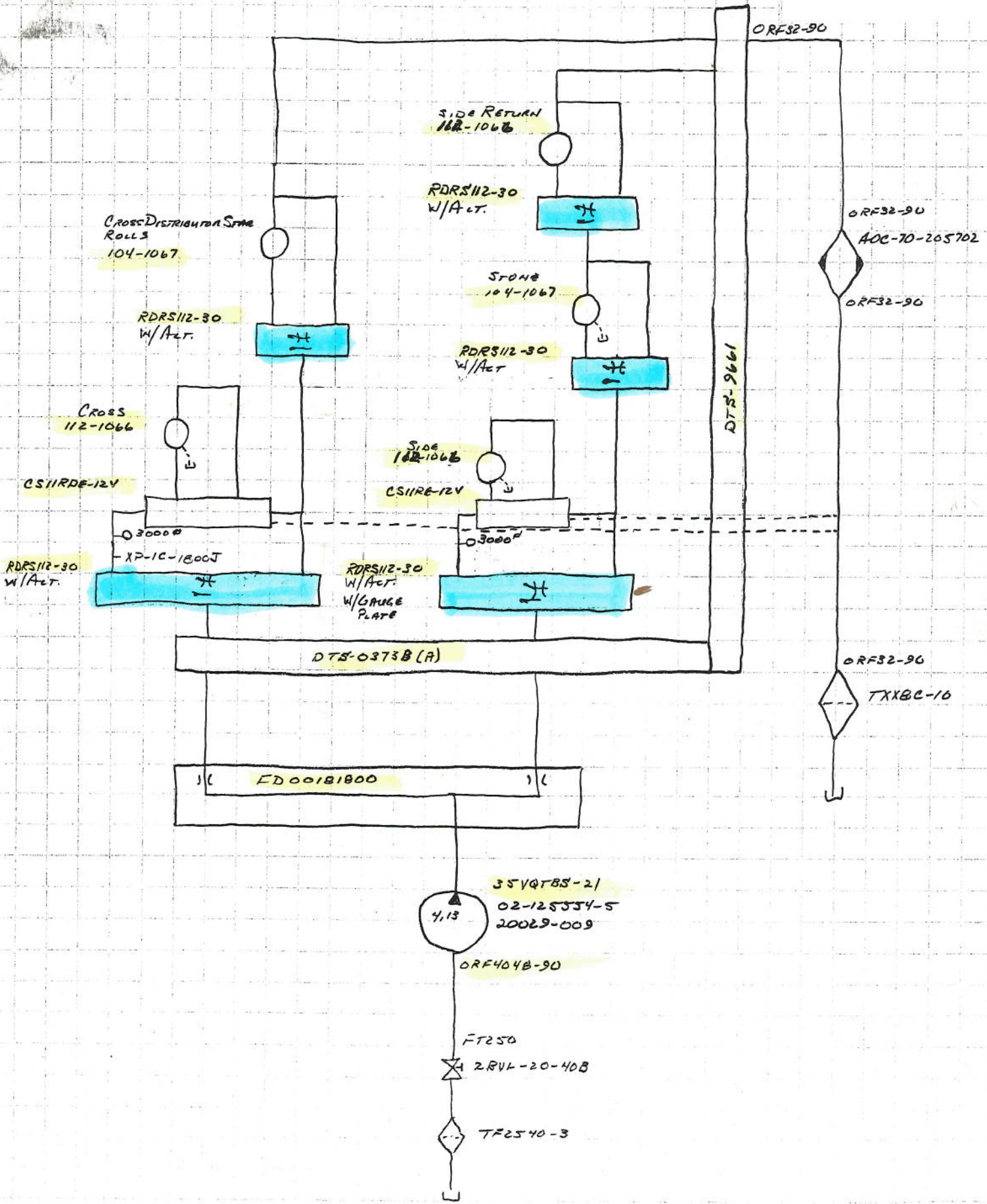


STAR TABLE

1/10/07
 # 07016
 TUPING FARMS
 4RSPH W/65'-TANK-AFETABLE
 ELECTRONIC LEVELING

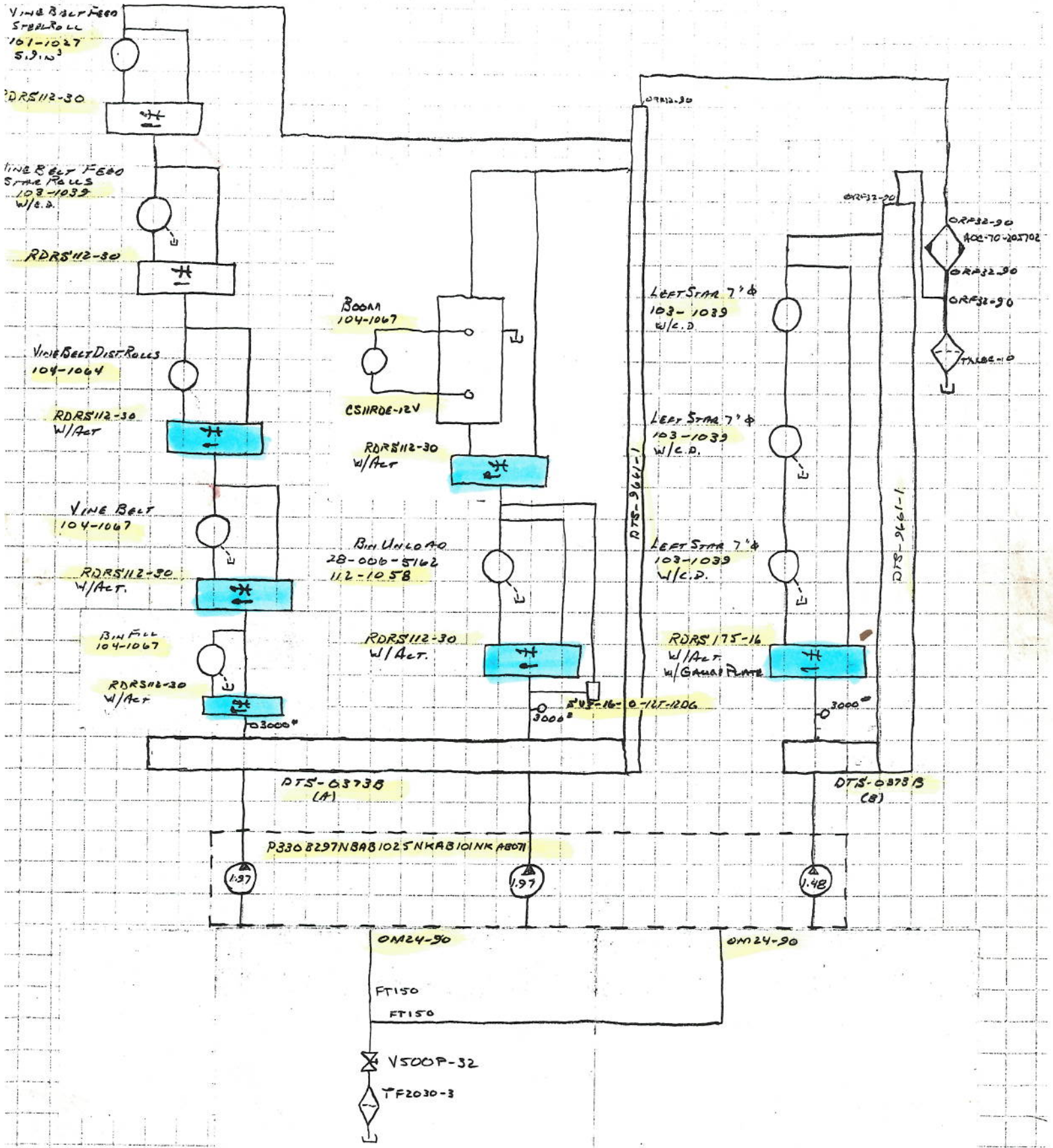


5/30/07 #07016
TUPLING HRSAN/65-TANK



VINE BELT / BIN UNLOAD / LEFT STAR ROLLS

5/30/07 407016
 TURLING 4RSPH/65-TANK

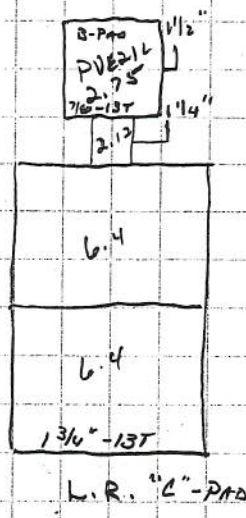


1/10/07 #07016
 TURNING FARMS
 4RSPH W/45" TANK - AFETABLE
 ELECTRONIC LEVELING

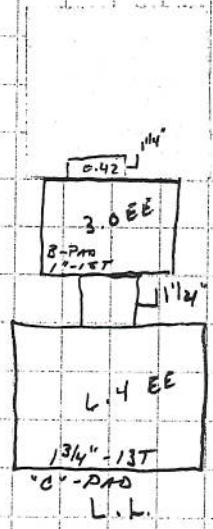
- 90° STEEL 4" TF2540-3 2 1/2" CLS NIP 2 BVL20-40B FT250 *35VQTBS
- 90° STEEL 3" 3" X 2" BUSH 2" CLS NIP V500P-32 FT200 FT200 V500P-32 5" CLS NIP 2" 90° STEEL W/43-32PK ZDF2215-25-5 W/43-32PK 2" 90° STEEL 2" CLS NIP V500P-32 2" CLS NIP 2" TEE
- 90° STEEL 3" TF2030-3 2" CLS NIP V500P-32 2" X 1 1/2" BUSH X 2" X 1 1/2" BUSH FT150 *PVE21L
- 90° STEEL 3" TF2030-3 2" CLS NIP V500P-32 2" CLS NIP 2" TEE X 2" X 1 1/2" BUSH FT150 *TRIPLE COMM. O 2" 90° STEEL 2" X 1 1/2" BUSH FT150 *TRIPLE COMM.
- 90° STEEL 3" TF2030-3 2" CLS NIP V500P-32 2" CLS NIP 2" TEE X 2" X 1 1/2" BUSH FT150 *TANDEM PLP O 2" 90° STEEL 2" X 1 1/2" BUSH FT100 *VID
- 90° STEEL 4" 4" X 2" BUSH 2" CLS NIP V500P-32 2" X 1 1/2" BUSH 1 1/2" CLS NIP 5F150-25-5 1 1/2" CLS NIP 2" X 1 1/2" BUSH V500P-32 2" CLS NIP 2" TEE X 2" X 1 1/2" BUSH FT125 *TANDEM 3.0EE O 2" 90° STEEL 2" X 1 1/2" BUSH FT100 *3.0EE

X 2" X 1 1/4" BUSH O 2" 90° STEEL FT125 2" X 1 1/4" BUSH FT125

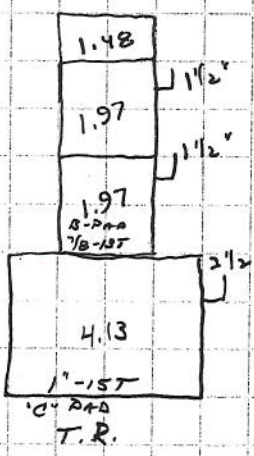
*T64/64 *L4EE



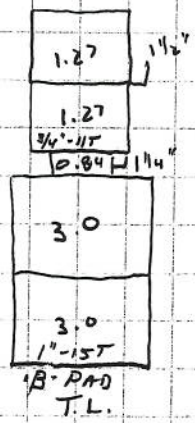
L.R. "C"-PAD



"C"-PAD L.L.



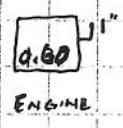
T.R.



T.L.

- L.R - TANDEM L.4 - GROUND DRIVE
- PVE21L - STEERING CIRCUIT
- L.L. - L.4 EE - AIR HEAD
- 3.0EE - SECONDARY
- T.R - 35VQTBS - CROSS
- 5.0EE
- TRIPLE COMMERCIAL - BIN FILL
- BIN UNLOAD
- LEFT START TABLE
- T.L. - TANDEM 3.0EE - LEFT PRIMARY
- RIGHT PRIMARY
- TANDEM PLP - RIGHT START TABLE
- RIGHT START DIST. STAM
- ENG - VID - BRANCH CHARGE PRESSURE

GEAR PRODUCTS - 41 HOLE BOX
 DP49

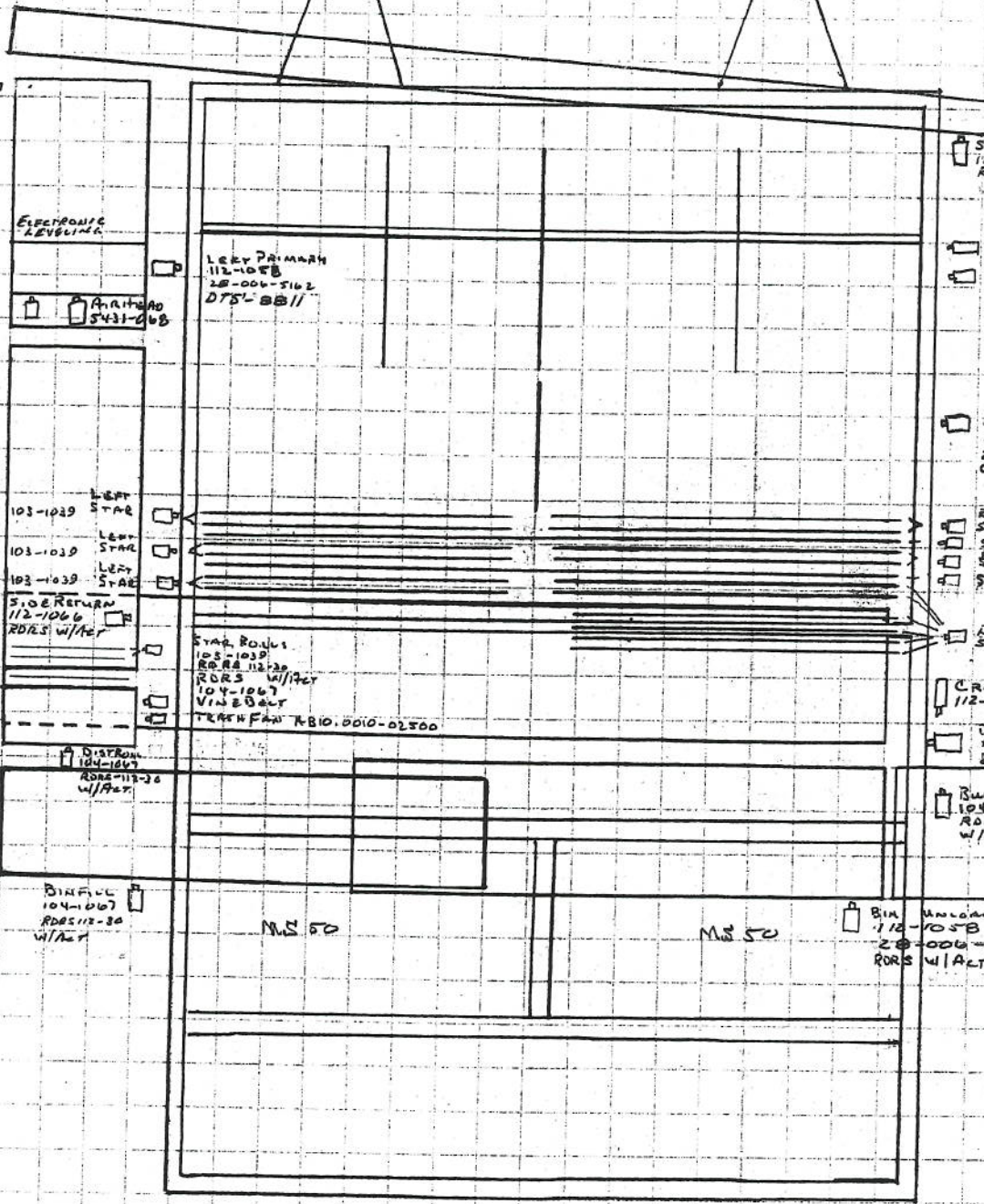


607016
 TUPPING
 HRSPT / 65-TANK

MS 18-8

MS 18-8

Side
 113-1066
 RORS w/Act
 w/GA. Plate



ELECTRONIC LEVELING

Airhead Deductor 101-1039

LEFT STAR 103-1039

LEFT STAR 103-1039

LEFT STAR 103-1039

SIDE RETURN 112-1066 RORS w/Act

DIST. ROLL 104-1064 RORS 112-30 w/Act

BIN FILE 104-1067 RORS 112-30 w/Act

LEFT PRIMARY 112-1068 2B-006-5162 DTS-8B11

STAR ROLL 105-1039 RORS 112-30 RORS w/Act 104-1067 VIB BOLT

TRUCK FAN TB10.0010-02500

MS 50

MS 50

BIN 112-1058 2B-006-5162 RORS w/Act

STONE 104-1067 RORS w/Act

SHALLOR 104-1062 RORS 112-30 w/Act w/GA. Plate

RIGHT PRIMARY 112-1058 2B-006-5162 DTS-8B11

SECONDARY 112-1058 2B-006-5162 GS11RDE-124

RIGHT STAR 103-1039

STEEL 104-1067

RIGHT STAR 103-1039

STEEL 104-1067

CROSS RORS 112-30 112-1066 w/Act

DYNIMO 112-1058 2B-006-5162 RPS5-314 NPH

BULK 104-1067 RORS 112-30 w/Act

RORS w/Act w/GA. Plate

RORS w/Act w/GA. Plate

1/10/07
07016
TUPLING FARMS
MRS PH 11/65" JANE-THE TABLE
ELECTRONIC LEVELING

