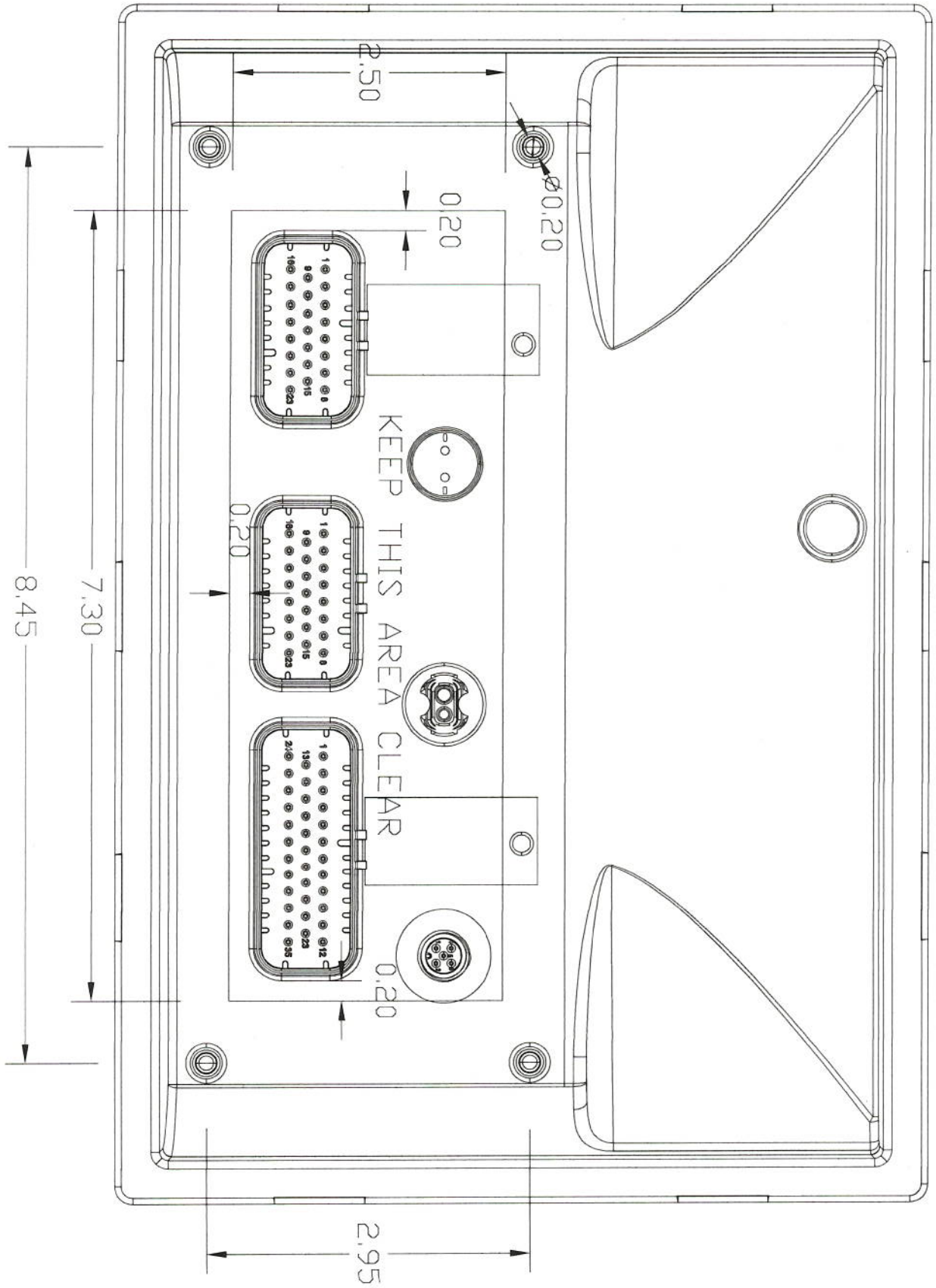
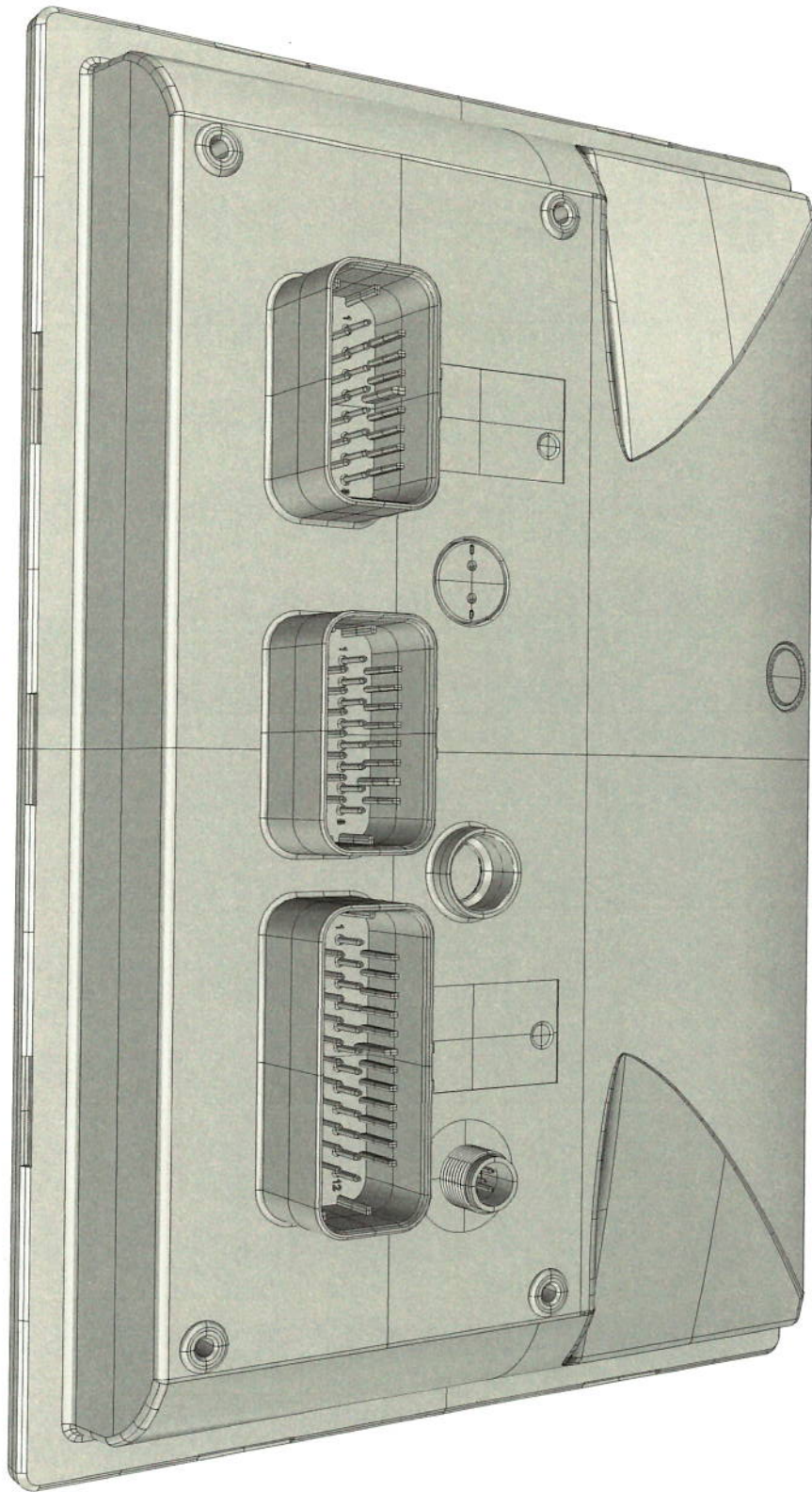
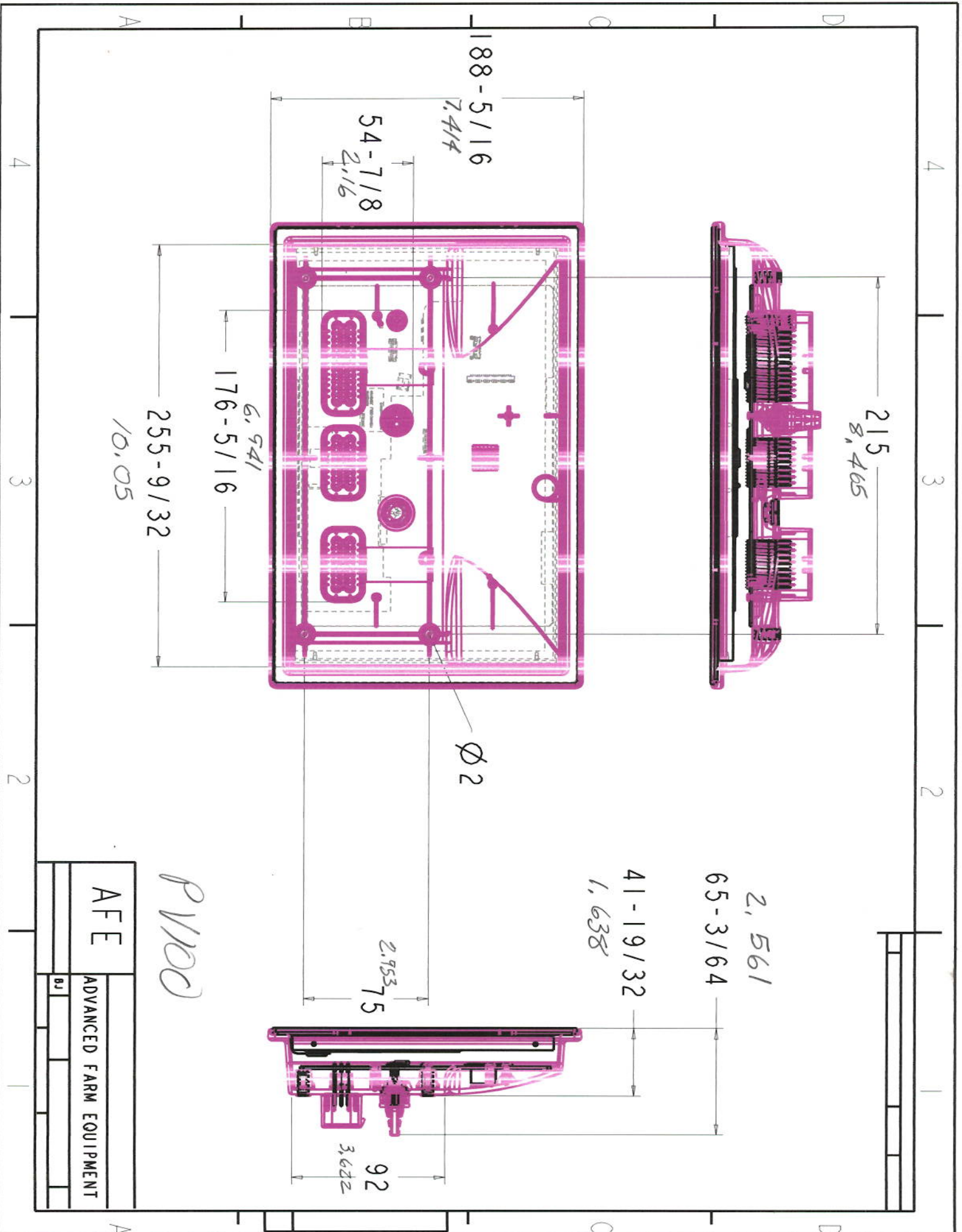


#18088

Heartland









## NEW LARGE DISPLAY BRINGS CAR-LIKE TECHNOLOGY TO RUGGED APPLICATIONS

**MURPHY**<sup>®</sup>  
by **INNOVATION CONTROLS**

**POWERSVIEW**<sup>®</sup>  
**1100**

*Pending Q3 Release*



Boasts high-speed processor and high-definition display

Large 10.6-inch display features rich color graphics

Offers complete connectivity with Bluetooth, Wi-Fi and more

Stereo functionality built-in for streamlined cab experience



Murphy brings a whole new experience to your applications with the PowerView 1100. This large 10.6-inch display features a high-speed processor that allows you to bring even more into your application. In addition to providing vital engine information, the PV1100 packs an infotainment hub in the cab with media playback from your phone via USB. It also boasts AM/FM stereo, Bluetooth and Wi-Fi connectivity.

The full-featured, configurable display integrates engine, transmission and diagnostic information into an easy-to-read

The 10.6-inch screen, with glove touch, can easily be viewed, even in full sunlight. The display's bonded LCD and rugged design make it a perfect solution for all types of environments and applications. The PV1100 is available in portrait or landscape configurations.

Customization of the display can be accomplished quickly via graphical programming or scripting with the PowerVision Configuration Studio<sup>®</sup> software.