

#1091

Mortensen

4RSPH w/Air

1997 - Sold to Mark Bulk  
for Ill. Operations

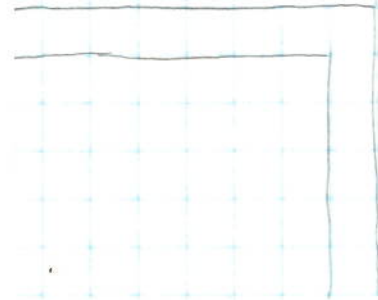
TRMM

TRMM

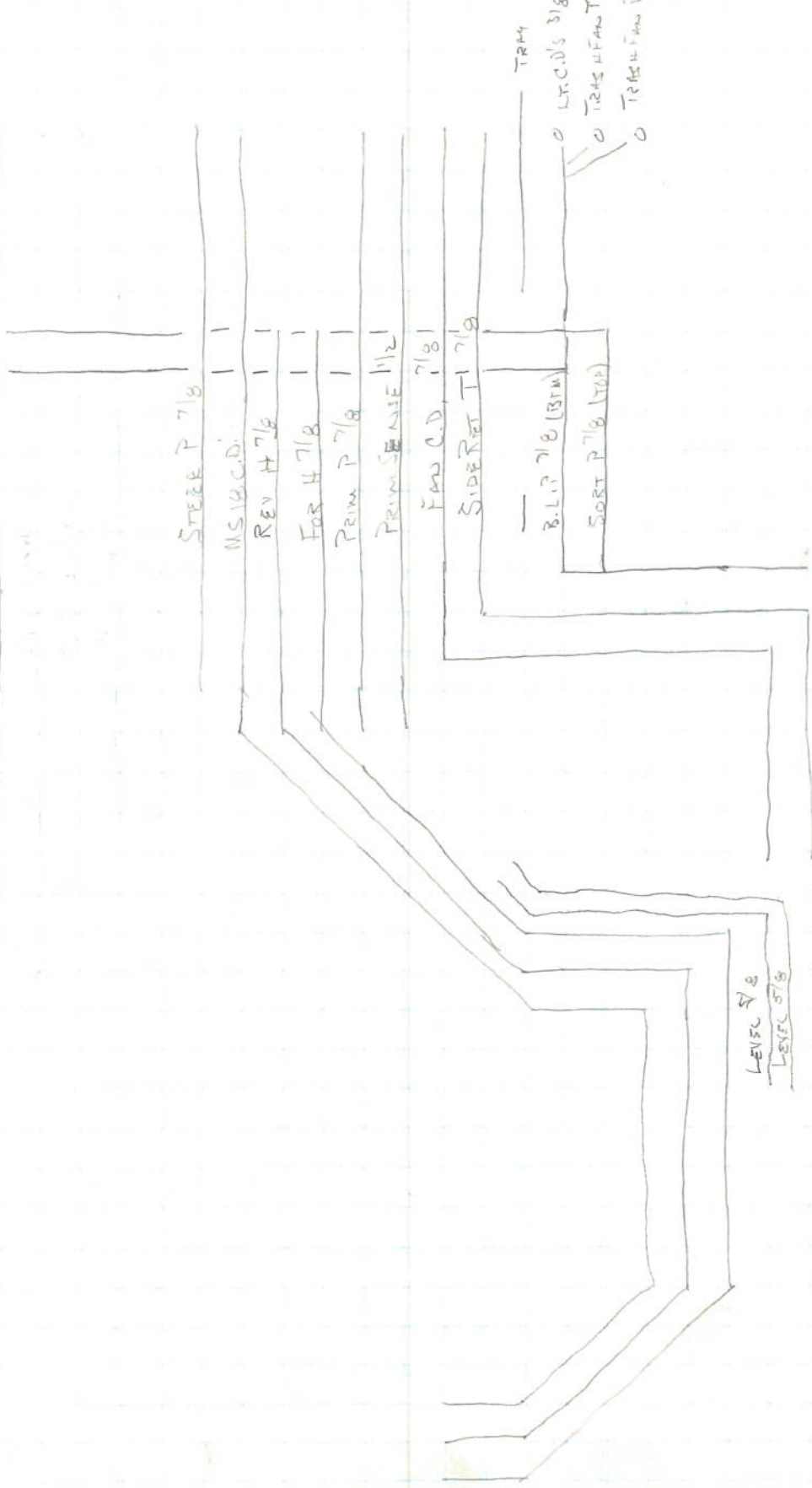
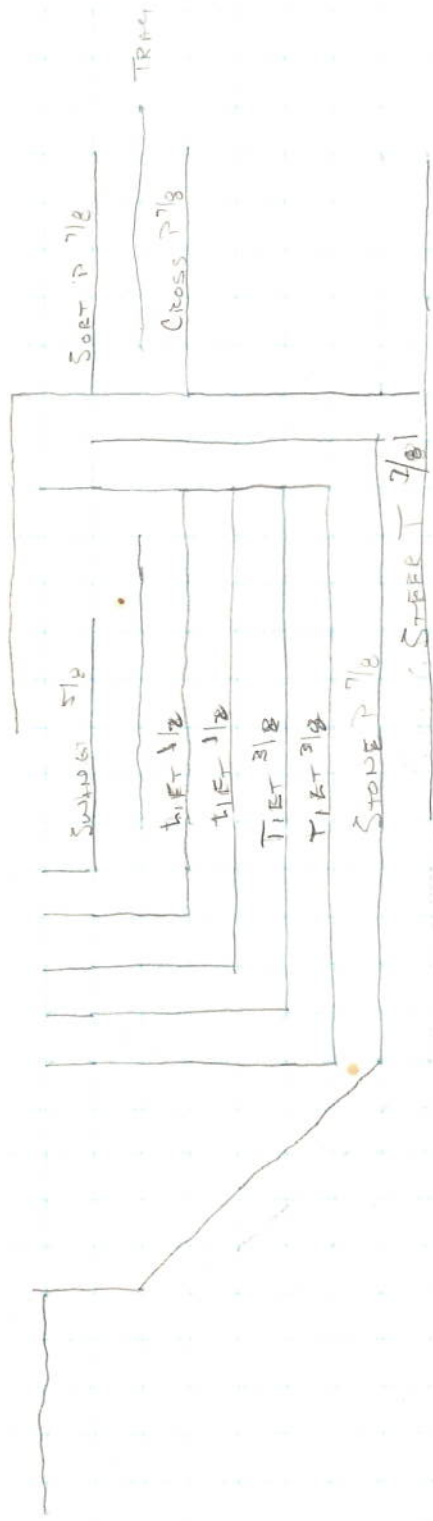
ENG. CERT. I.D.	CID.	1/L	SERIES	QPL
505	8.3		413	0604

ENG. SER. No. 4483 9335  
 RATED H.P. 250 @ 2200 RPM  
 MODEL NAME 6CTA8.3-C

DATE OF MAKE: 19930212



2768 Dormax S.W. • Wyoming, Michigan 49509  
 Phone 616/531-4000  
 Toll Free From Michigan (1) 800-632-1853  
 Toll Free Outside of Michigan (1) 800-356-5449



- SIDE RET P 7/8 BTM
- SIDE P 7/8
- C.D.'S 1/2

↑  
0 0 0

LEVEL 7/8  
LEVEL 5/8

AIR MOTOR

11.5

ACT

MEDIUM AIR

VIBR BELT

REV 5 HP

TRAIL

FAN

CONVEYORS

SECT 4 CROSS PRIM 3 MASTER HYD OIL

PARK RANGE GEARDR 2 FAN

HIGH 4 PRESS HYD OIL FILTERS 6 LEVEL

TEST SWITCHES

LIGHTS

HIGH ENG TEMP. 6 H  
LOW OIL PRESS.  
VIBRATION 16

414

412

14.0 20HP 20HP 20HP 20HP 20HP 20HP 20HP 20HP 20HP 20HP 20HP 20HP 20HP 20HP

15.0 20HP 20HP 20HP 20HP 20HP 20HP 20HP 20HP 20HP 20HP 20HP 20HP 20HP 20HP

SPEEDMETER TACH ACTUATORS OIL BACKLASH LIGHTS

BACKLASH

LIGHTS

CHARGES 2-SPEED 414

DOME 2-SPEED 414

PLAN 414

20A

20A

20A

20A

20A

20A

20A

20A

20A

20A

20A

20A

20A

20A

20A

20A

20A

20A

20A

20A

20A

20A

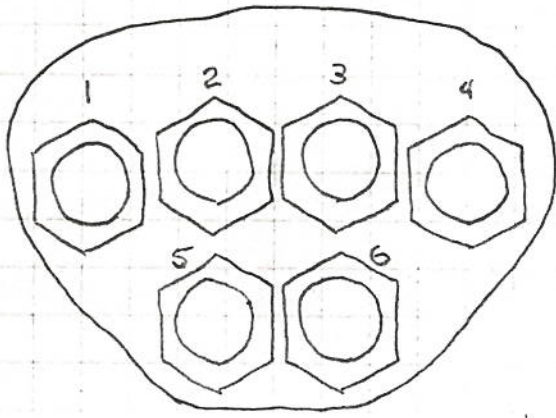
20A

20A

20A







VALVE BANK

SWING

LIFT

TILT

STONE BOX

COUNTERS

BLADE

1. STONE BOX	BLACK RED
2 TILT	ORANGE BLUE
3. LIFT	BLACK/WHITE RED/WHITE
4 SWING	BLUE/WHITE GREEN/WHITE
5 COUNTERS	ORANGE/BLACK BLUE/BLACK
6. BLADE	RED/BLACK GREEN/BLACK
12 VDC +	WHITE
GROUND -	GREEN
SPARE	WHITE   BLACK



# R.P.M. INC.

400 - 36TH STREET, S.E.  
GRAND RAPIDS, MICH. 49508

PHONE (616) 247-0633

1993 4RSPH W/A 8.3 ENG.

BLACK	✓ #1		4X4
	✓ 12	RED	2-SPEED
	✓ 17	BLUE	#4 FUSE TO PARK SWITCH - SWITCH BLACK #9 TO BACK OF SL186 TO BRAKE CLUTCH SOL.
	✓ 22	ORANGE	IGN ON STB7 TO REQ ON ALT.
RED	✓ #2		"104 WHITE IN COLUMN TO SIDE OF SL186 (#2 RED TO STARTER RELAY)
	✓ 7	BLACK	TACH "S" TO SENSOR
	✓ 18	BLUE	TACH "G" TO SENSOR
	✓ 23	ORANGE	HYD. OIL TEMP SENSOR
BLUE	✓ #3		LIGHT TO GOO. HYDRO FILT. #3
	✓ 8	BLACK	GRD. HYDRO SWITCH TO FILT. (12VDC)
	✓ 13	<sup>RED</sup> BROWN	"12A" RED IN COLUMN TO RED ON FUEL SHUT OFF SOL.
	✓ 24	ORANGE	"C" ON REQ. FUSE TO A.C. COMP.
ORANGE	✓ #4		WATER SENDER - GAUGE
	✓ 9	BLACK	WATER LIGHT
	✓ 14	RED	OIL SENDER GAUGE
	✓ 19	BLUE	OIL LIGHT
YELLOW	✓ #5		#12 RED IN COLUMN TO WHITE ON ALT.
	✓ 10	BLACK	FAN FILT. SWITCH TO FILT. #1 (12VDC)
	✓ 15	RED	LIGHT TO FAN FILT. #3
	✓ 20	BLUE	HYD. OIL LEVEL SENSOR TO BUZZER
	✓ 25	ORANGE	HYD OIL LEVEL TEST SWITCH (12VDC) TO SENSOR
BROWN	#6		BACK UP LIGHTS
	11	BLACK	SOFT BLACK SOL.
	16	RED	CROSS SOL.
	21	BLUE	PRIM. SOL.

## RIGHT SIDE OF CAB

31	FAN (RED)	#8 FUSE	6" 1/2'
33	B-AC COMPRESSOR SWITCH (ORANGE)	TO "B" ON REQ. FUSE	8"
30	B-WIPER-RADIO (BLACK)	#9 FUSE	6" 1/2'
20	DOME (PINK/BLACK)	#9 FUSE	6" 1/2'
21M	DASHLIGHT (BROWN)	#9 FUSE	6" 1/2'

FUEL SHUT OFF SOL. SOLS  
REQ - BLUE/BRN #13  
WHITE - TO STARTER RELAY  
BLACK - GRD.



# Fischer-Flack, INC.

CORPORATE HEADQUARTERS  
 2115 RUST AVENUE • P.O. BOX 1508  
 SAGINAW, MICHIGAN 48605 • 517/752-4181

6585 N. Jerome  
 P.O. Box 229  
 Alma, MI 48801  
 517/463-6104  
 FAX 517/463-1967

119 W. Fletcher  
 Alpena, MI 49707  
 517/356-3411  
 FAX 517/356-1138

303 W. Water St.  
 Flint, MI 48502  
 313/235-6420  
 FAX 313/235-8904

3201 Bay City Rd.  
 P.O. Box 1687  
 Midland, MI 48640  
 517/496-3600  
 FAX 517/496-3044

2415 24th St.  
 Port Huron, MI 48060  
 313/985-8183  
 FAX 313/985-8183 Ext. 22

MICHIGAN WATTS 1-800-968-4181 • FAX 517-752-0538

