

#10039

HeC BactH

4RSPH $\frac{w}{65}$ AH

A. H. CLEARING

B I N	F I L L	Air/Hops	Stone	Up/Down	MANUAL	MANUAL	MANUAL
0	0	0	0	0	0	0	0
SYSTEM ERROR	MANUAL MODE	MANUAL AUTOMATIC DETECTION	SPEED	UP/DN	MANUAL	MANUAL	MANUAL

S P E E D C O M T R O L S

Air Head Pump PRIMARY SECONDARY Air Head Boom START TABLE

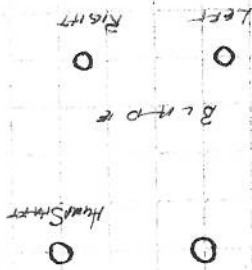
0 0 0 0 0 0 0 0 0 0 0 0 0 0 0 0 0 0 0

OFF LEFT RIGHT FEED DISCHARGE LEFT RIGHT DISTRAUS.

C O N V E Y E R S

0 0 0 0 0 0 0 0 0 0 0 0 0 0 0 0 0 0 0

MASTER PRIMARY SECONDARY STRUTABLE CROSS SIDE BIN/FILL BIN/BOOM BOOM TRANSFER LEFT RIGHT SPEED SPACE STEEL ROLL



T RUCK FORWARD DET 0

BACK IN 0

0 0 0 0 0 0 0 0 0 0 0 0 0 0 0 0 0 0 0

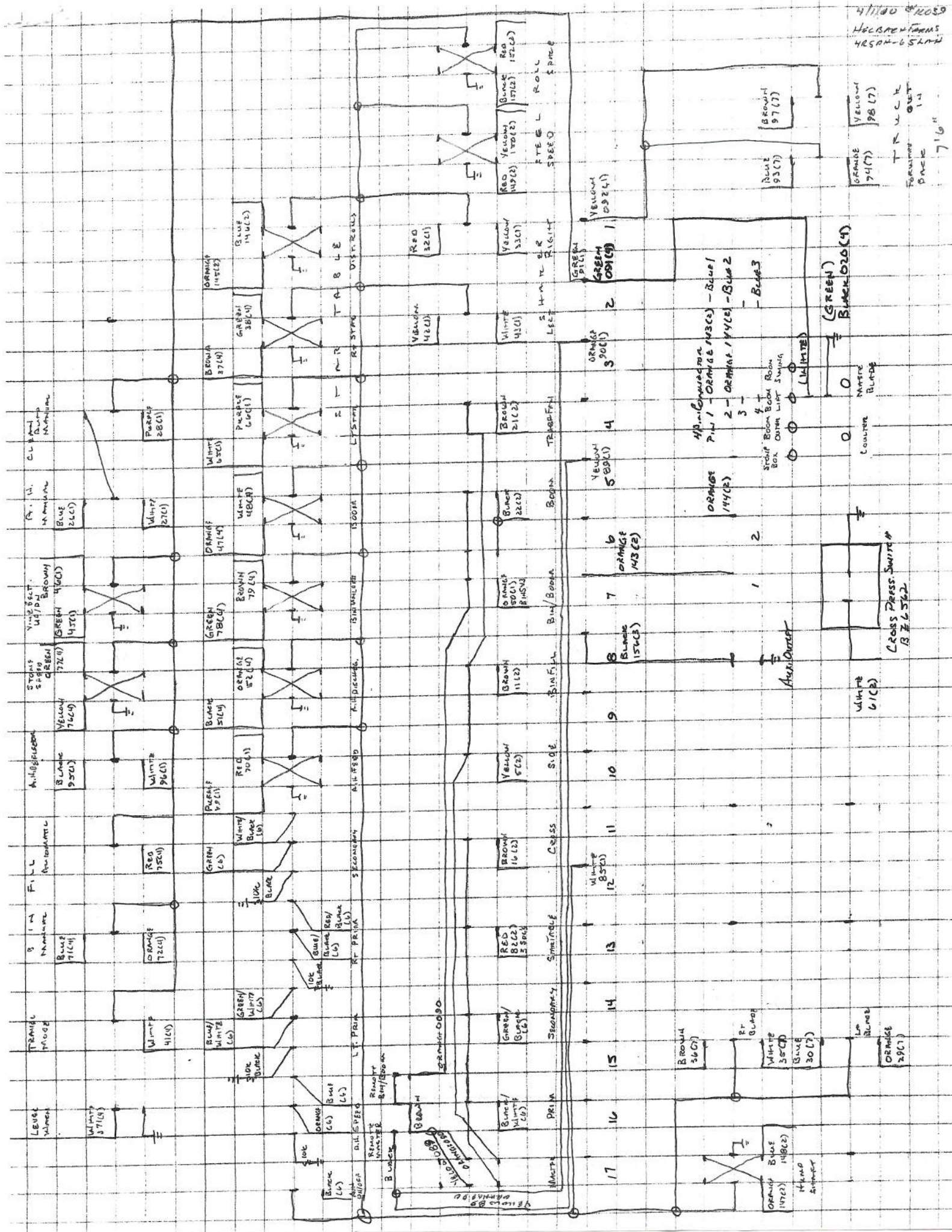
SPRING BOX ROOM CURT ROOM LIST ROOM SWING BOOM

SEAT SWITCH BLACK 804 BLACK 810 TO TIME DELAY RELAY PIN #6 TO Time Delay Relay Pin #7

Coupler BUFFER MASTER

3/12/10
#10039
HELBACH FARMS
40504-65644

4/11/00 #2059
HOLBROOK FARMS
HRSAN-652M



TRUCK
FURNITURE
DANCE
7'6"

CROSS PRESS SWITC
BZL562

ORANGE 94(7)
YELLOW 98(7)

(GREEN)
BLACK 102(4)

H.P. CONNECTION
P.W. 1 - ORANGE (WSCE) - BLUE 1
2 - ORANGE / YELLOW - BLUE 2
3 -
4 -
5 -
6 -
7 -
8 -
9 -
10 -
11 -
12 -
13 -
14 -
15 -
16 -
17 -

SPRING BOOM ROOM
BOX OUTER LAMP SUPPLY

COURT
BLADE

WHITE 61(C)

GREEN 91(C)
YELLOW 92(4)
GREEN 93(5)

ORANGE 370(C)
WHITE 41(C)
YELLOW 42(C)

RED 32(C)

YELLOW 530(C)
BLACK 21(C)

ORANGE 370(C)

ORANGE 143(C)

BLACK 156(C)

YELLOW 57(C)

BROWN 14(C)

RED 82(C)
BLACK 83(C)
BROWN 84(C)

GREEN 81(C)
WHITE 82(C)

BROWN 36(C)

WHITE 38(C)

BROWN 36(C)

WHITE 38(C)

ORANGE 143(C)

BLACK 140(C)

BLUE 93(7)

BROWN 97(7)

BROWN 93(7)

ORANGE 94(7)

YELLOW 98(7)

GREEN 91(C)

WHITE 92(4)

GREEN 93(5)

ORANGE 94(7)

YELLOW 98(7)

BROWN 97(7)

BROWN 93(7)

ORANGE 94(7)

YELLOW 98(7)

BROWN 97(7)

BROWN 97(7)

BROWN 93(7)

ORANGE 94(7)

YELLOW 98(7)

BROWN 97(7)

BROWN 93(7)

ORANGE 94(7)

YELLOW 98(7)

BROWN 97(7)

BROWN 93(7)

ORANGE 94(7)

YELLOW 98(7)

BROWN 97(7)

BROWN 93(7)

ORANGE 94(7)

ADVANCED FARM EQUIPMENT

**BIN LEVELING
MD3/XA2**

PLUG #1
PIN NO.

JUNCTION
BLOCK NO.

1	ORANGE	72	9	BIN MANUAL UP	C2:9 MD3
2	BLUE	71	10	BIN MANUAL DOWN	C2:10 MD3
3	WHITE	41	11	TRAVEL MODE	C2:11 MD3
4	BLACK (BELDEN 9418)		12	BIN LEVEL CONTROL % PIN "A"	C1:4 XA2
5	WHITE (BELDEN 9418)		12	BIN LEVEL CONTROL % PIN "A"	C1:4 XA2
6	RED (BELDEN 9418)		16	BIN LEVEL CONTROL % PIN "B"	C1:18 XA2
7	GREEN (BELDEN 9418)		19	BIN LEVEL CONTROL % PIN "B"	C1:32 XA2
8	WHITE	371	13	LEVEL WARNING	C1:8 XA2
9					
10					
11	BLACK	15	15	PANEL GROUND	C1:15 XA2
12	RED	28	18	12VDC POWER SUPPLY	C1:28 XA2

PLUG #2
PIN NO.

1	BLUE (SENSOR)		1	BANNER SENSOR GROUND	C1:1 MD3
2	WHITE (SENSOR)		14	BANNER SENSOR "SIGNAL IN"	C1:10 XA2
3	BROWN (SENSOR)		21	12VDC POWER SUPPLY	C2:4 MD3
4	RED	75	21	12VDC POWER SUPPLY	C2:4 MD3
5	RED	280	3	REAL TIME CLOCK POWER SUPPLY	C1:7 MD3
6					
7					
8					
9					
10					
11					
12					

KAR-TECH ENCLOSURE

4/4/10

#10039

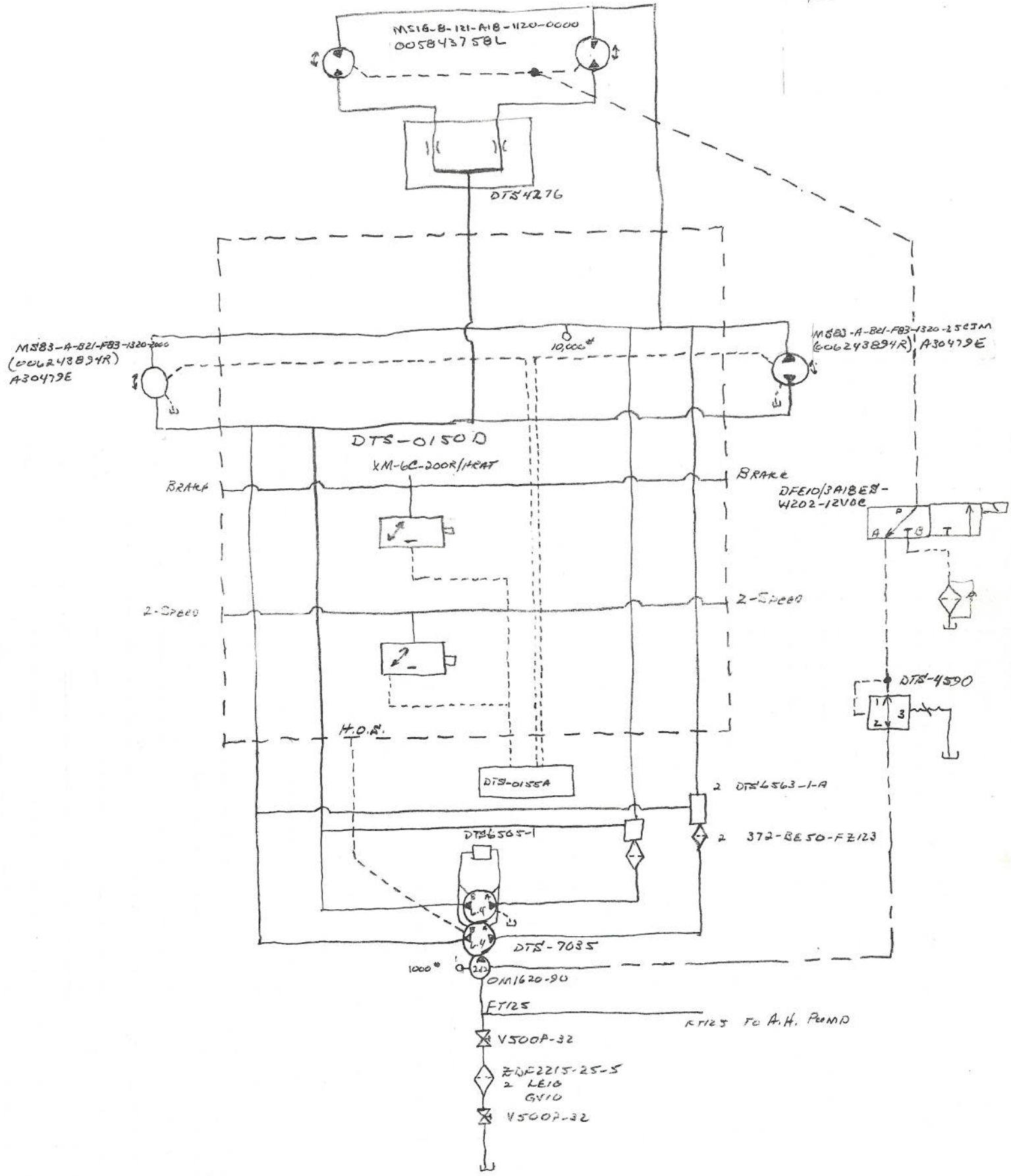
HELBACH FARMS

4RSPH 65"LAH

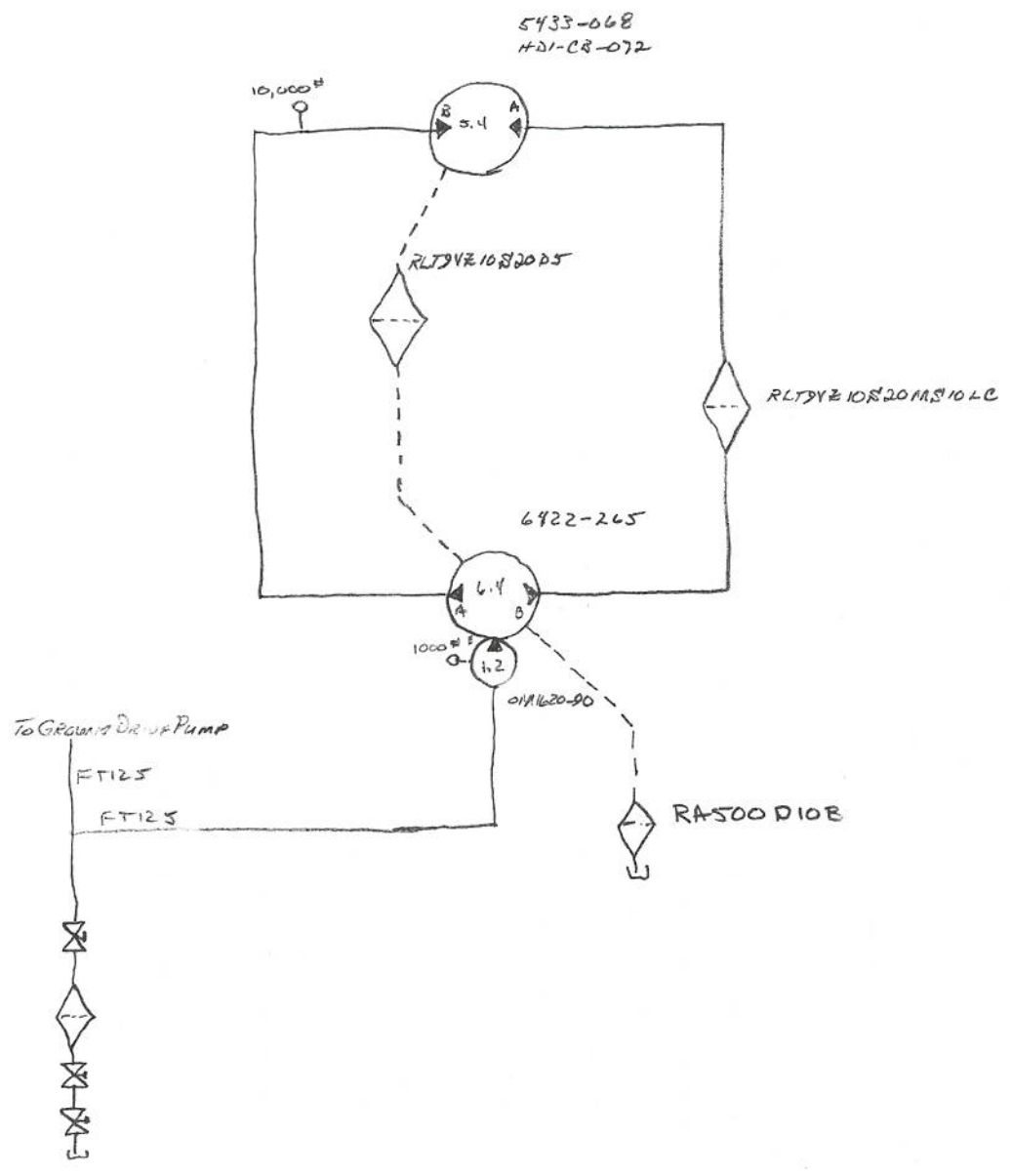
PIN #			
1	RED	AIR HEAD COIL #1 - PIN "A"	BELDEN 9418
2	ORANGE	AIR HEAD POTENTIOMETER TERMINAL #2	8468
3	BLUE	AIR HEAD POTENTIOMETER TERMINAL #3	8468
4	BLACK	AIR HEAD SWITCH - ON / OFF	8468
5	GREEN	LEFT PRIMARY COIL #1 - PIN "A"	9418
6	BLUE/WHITE	LEFT PRIMARY POTENTIOMETER TERMINAL #2	8468
7	GREEN/WHITE	LEFT PRIMARY POTENTIOMETER TERMINAL #3	8468
8	BLACK/WHITE	LEFT / RIGHT PRIMARY SWITCH - ON / OFF	8468
9	BLACK	RIGHT PRIMARY COIL #1 - PIN "A"	9418
10	BLUE/BLACK	RIGHT PRIMARY POTENTIOMETER TERMINAL #2	8468
11	RED/BLACK	RIGHT PRIMARY POTENTIOMETER TERMINAL #3	8468
12			
13	WHITE	SECONDARY COIL #1 - PIN "A"	9418
14	GREEN	SECONDARY POTENTIOMETER TERMINAL #2	8468
15	WHITE/BLACK	SECONDARY POTENTIOMETER TERMINAL #3	8468
16	GREEN/BLACK	SECONDARY SWITCH - ON / OFF	8468
17			
18			
19			
20	BLACK	0020 KAR-TECH GROUND TO PANEL	P
21			
22			
23			
24			

LEFT PRIMARY 1
 RIGHT PRIMARY 2
 AIR HEAD 3
 SECONDARY 4

1/4/10
 # 10039
 HELLBACH
 YRSAH-65LAF

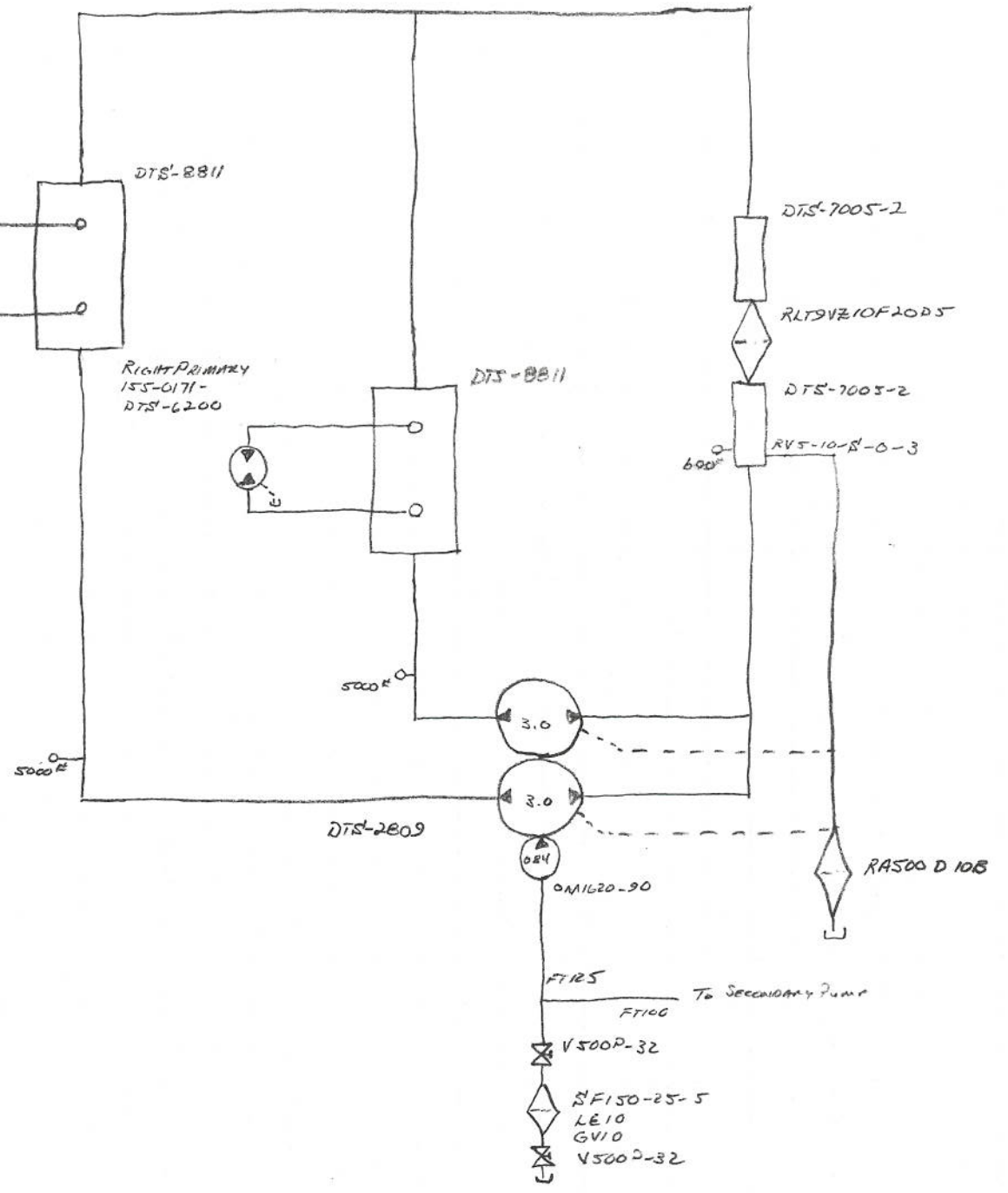


1/4/10
#10039
HELBACH
4RSPA65L4H

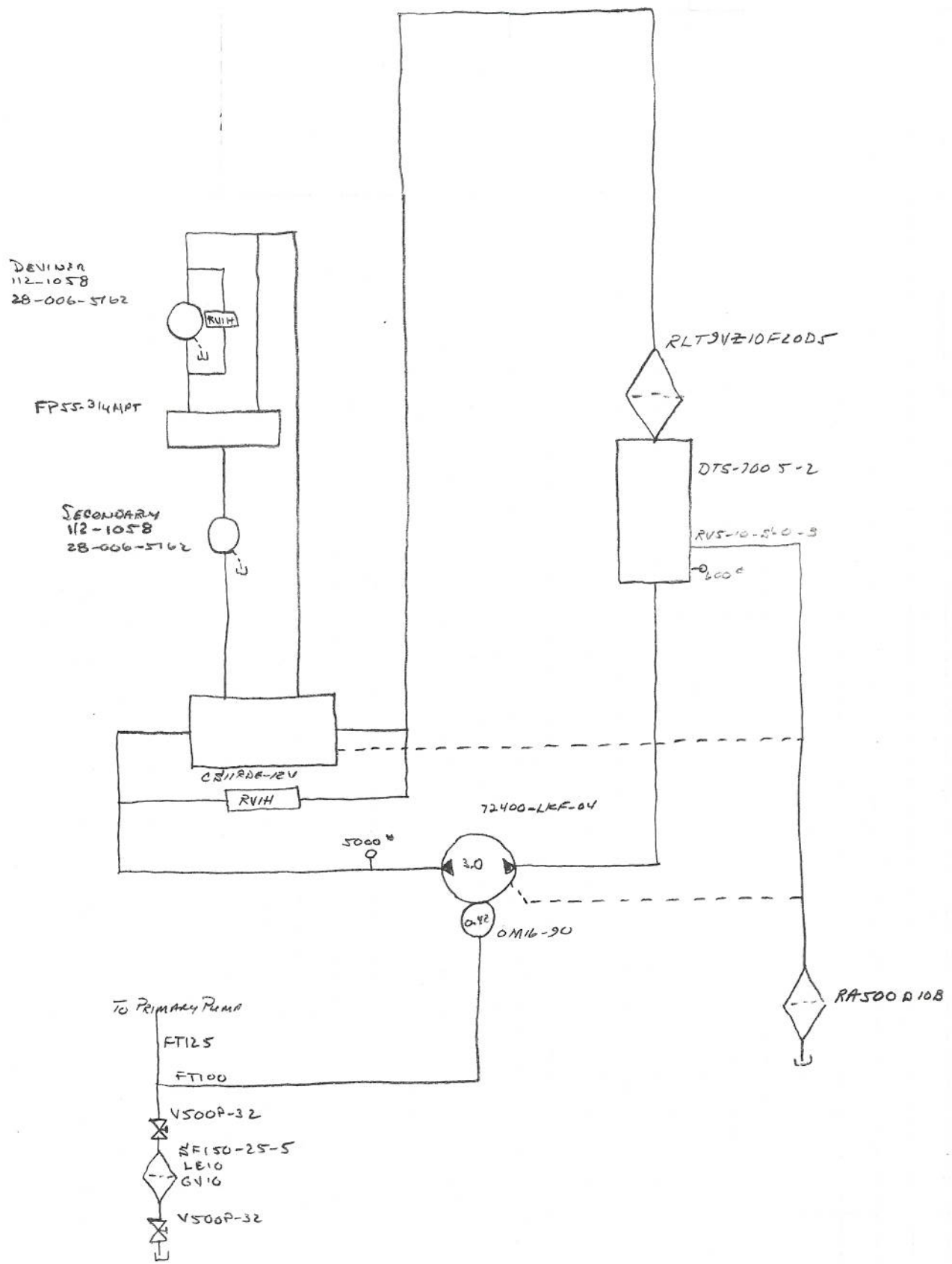


1/4/10
 # 10039
 HECUBACH
 YRSP#65LAH

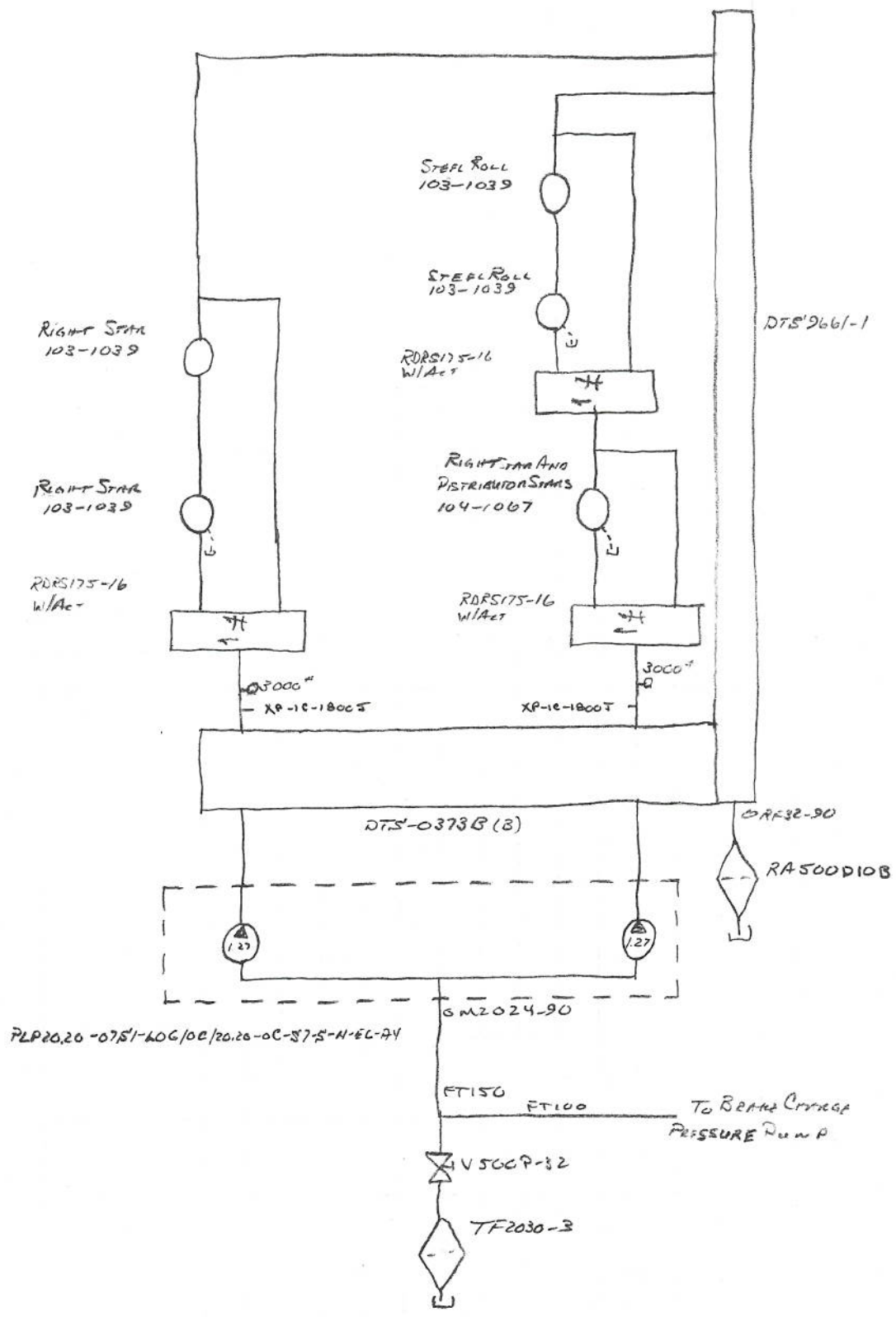
LEFT PRIMARY
 155-0171-
 DTS-6200



1/4/10
E10039
HELLBACH
4R5A465LAH

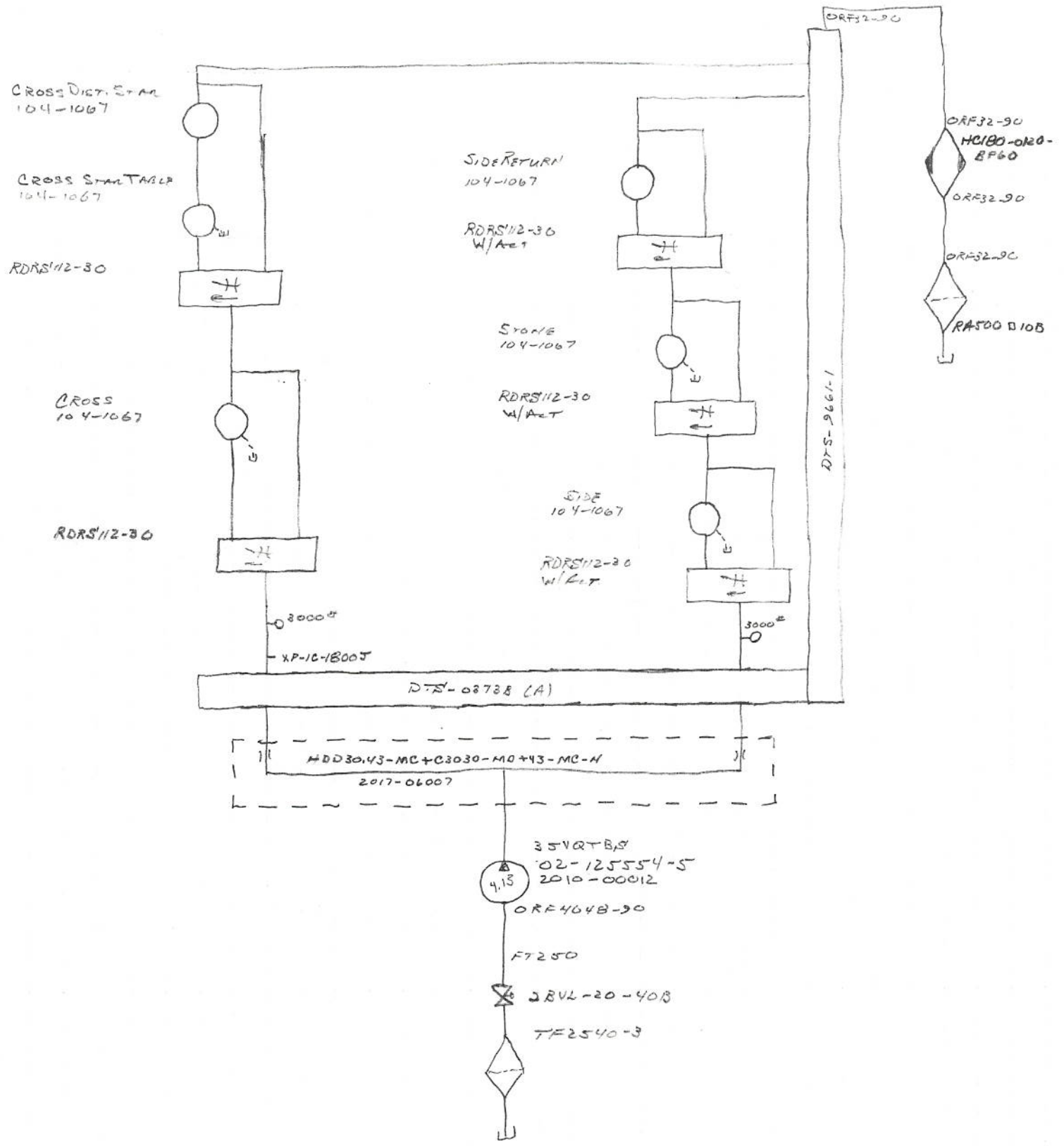


1/4/10
#10039
HELLBAEHL
HRSR146SLAH

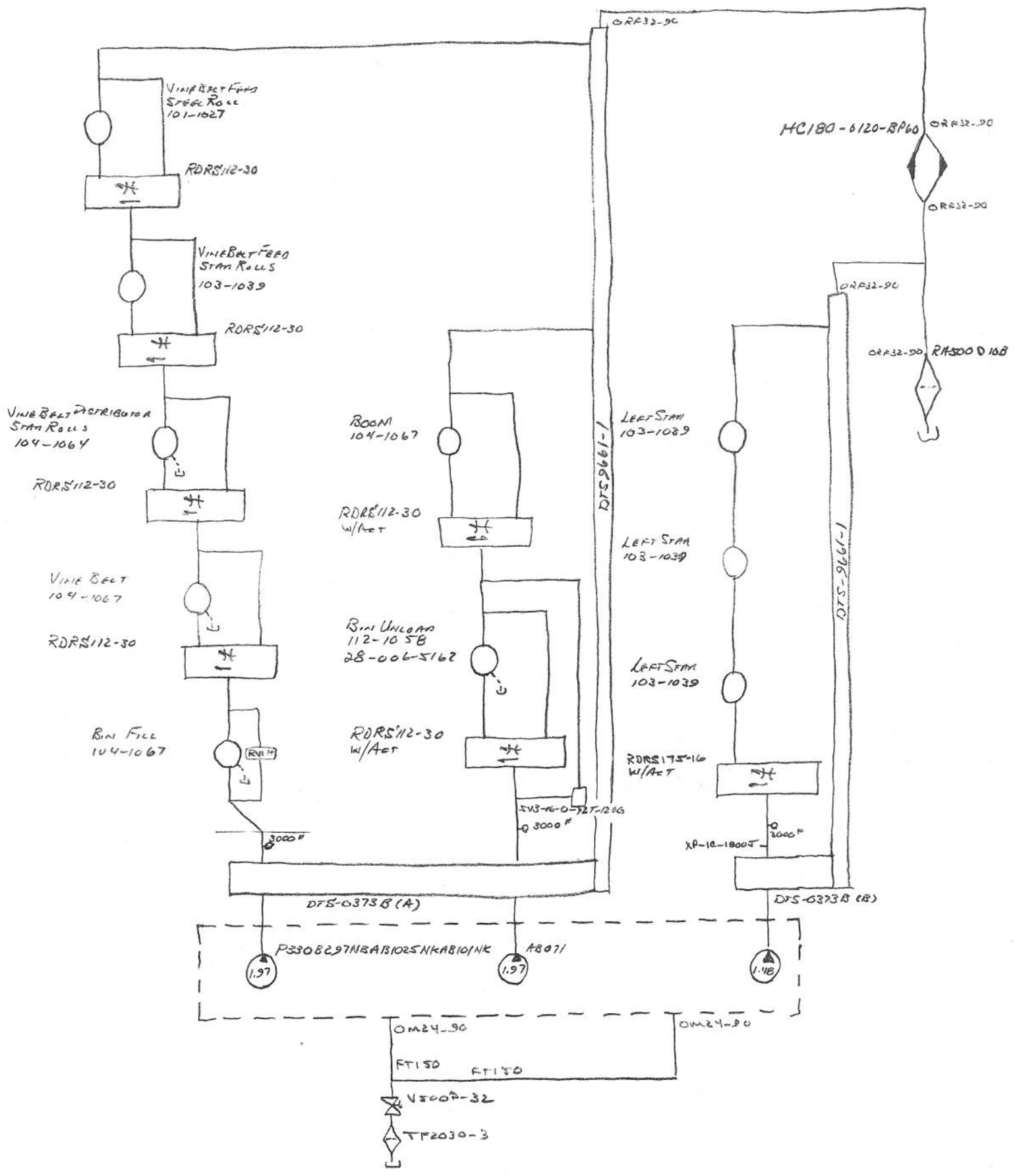


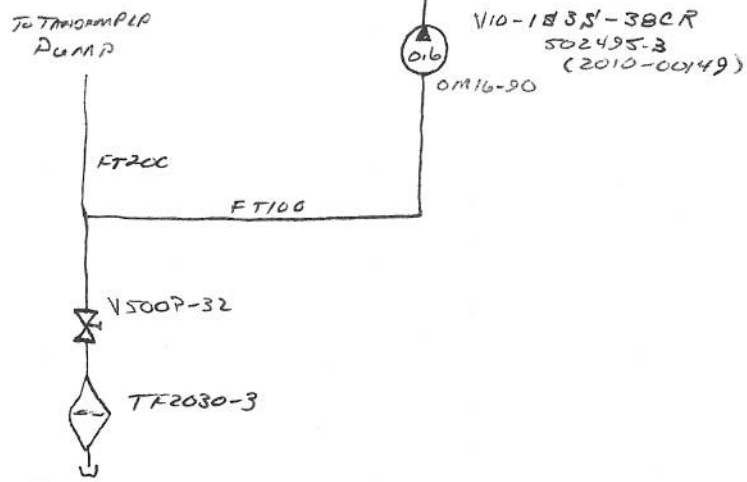
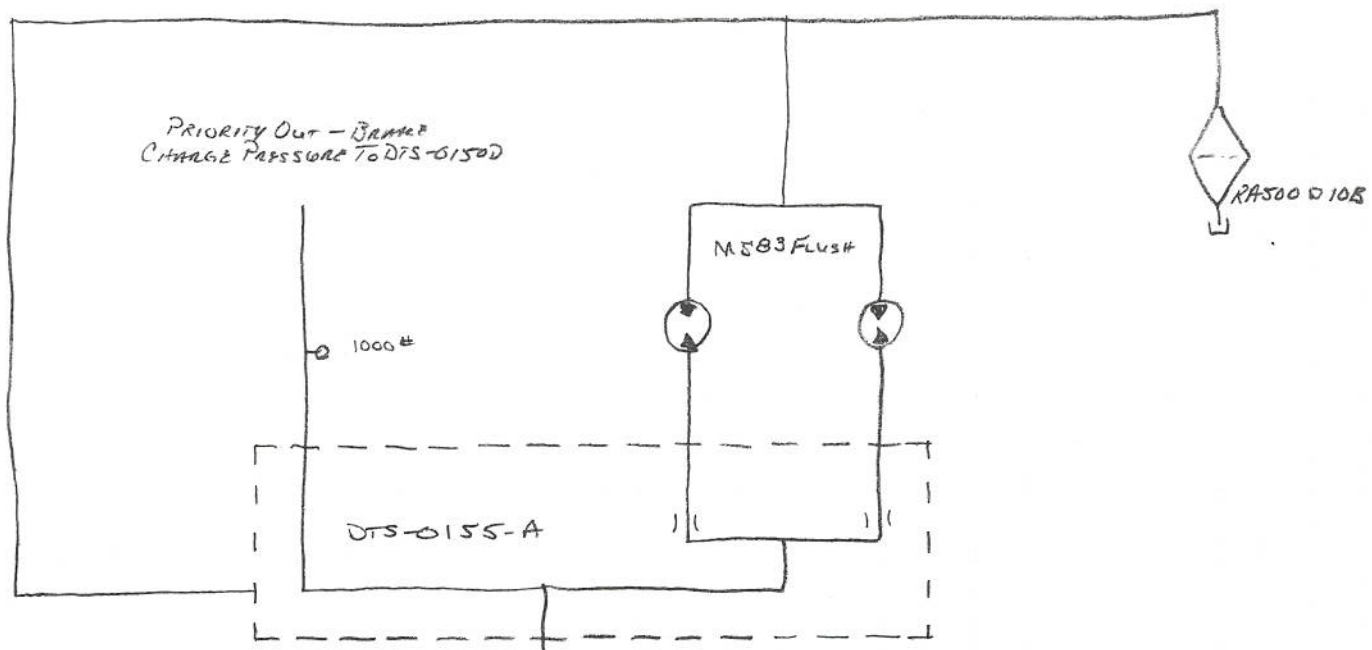
PLP20.26-0751-606/02/20.26-0C-87-S-N-EC-A4

1/4/10
 # 10039
 HELFBAEH
 YRSB#-65LAH



1/4/16 #10039
 HELLBACH KRSPHLSCH

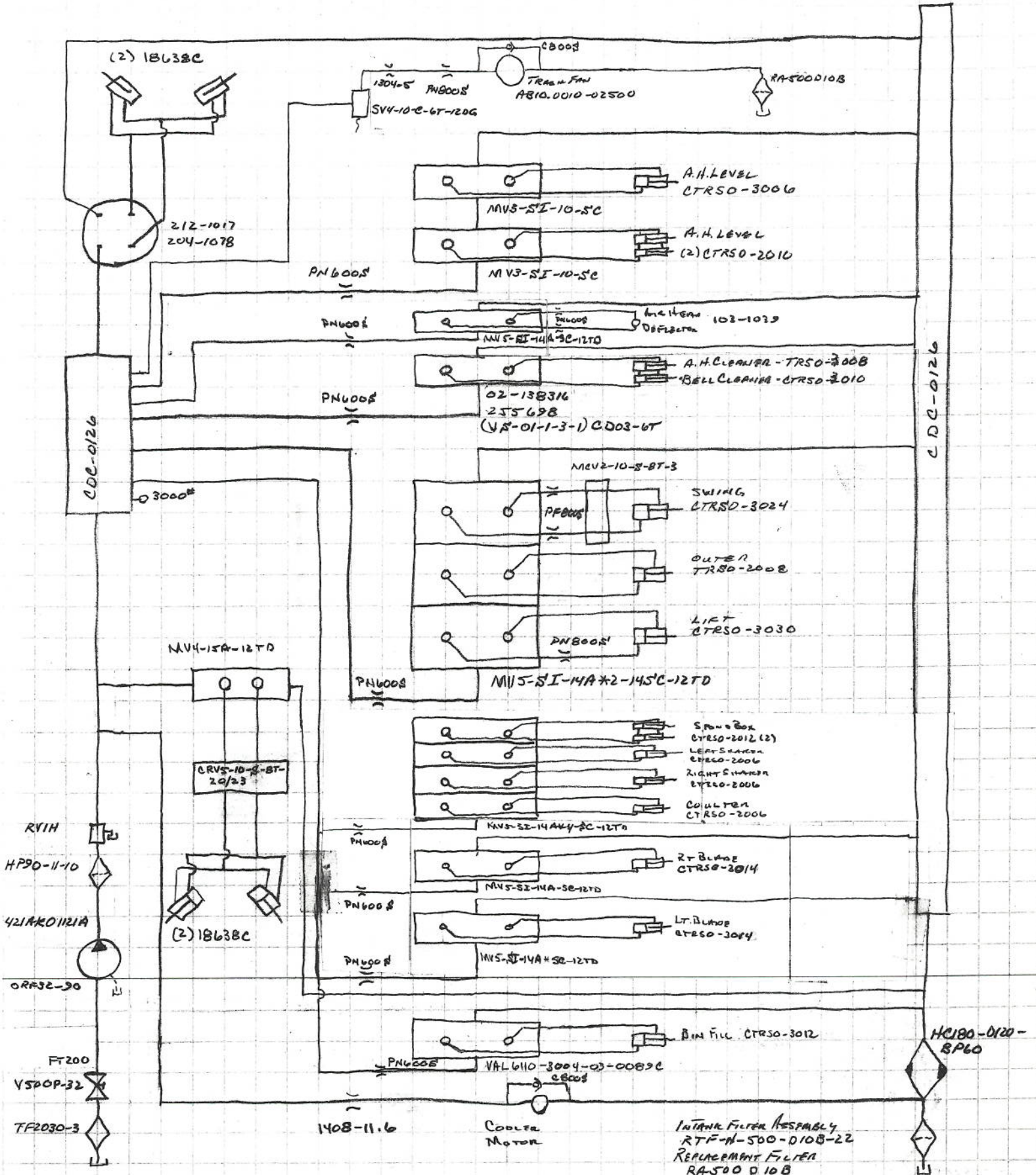




4RSPH W/65" A.H. / M-TABLE
STEERING-VALVE BANK CIRCUITS

1/4/16 P10039

HOBBS
4RSPH-65" LAM



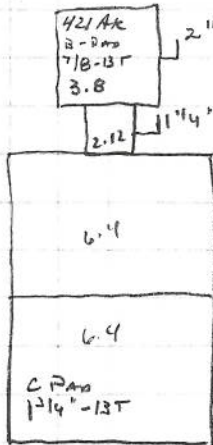
④
TF2540-3
2 1/2" 90° STEEL
2 1/2" CLS N/A
2BV20-40B
FT250
* 35VQTB3

③
3" X 2" Bush
2" CLS N/A
VSDOP-32
FT200
FT200
2" 90° STEEL
W43-32PK
ZDF2215-25-5
W43-32PK-2"
2" 90° STEEL
2" CLS N/A
VSDOP-32
2" CLS N/A
2" TEE X
X- 2" X 1 1/4" Bush
FT125
2" X 1 1/4" Bush
FT125
* T. 4/4.4 * 6.4

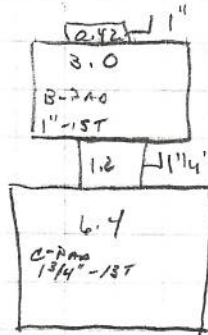
③
TF2030-3
2" 90° STEEL
2" CLS N/A
VSDOP-32
2" CLS N/A
2" TEE X
VSDOP-32
FT200
* 421AK

③
TF2030-3
2" 90° STEEL
2" CLS N/A
VSDOP-32
2" CLS N/A
2" TEE X
X- 2" X 1 1/2" Bush
FT150
* TRIP. COMM. PUMP
O- 2" 90° STEEL
2" X 1 1/2" Bush
FT150
* TRIP. COMM. PUMP.
X- 2" X 1 1/2" Bush
FT150
* TAN. PLP
O- 2" 90° STEEL
2" X 1" Bush
FT100
* V10

④
4" X 2" Bush
2" 90° STEEL
2" CLS N/A
VSDOP-32
2" X 1 1/2" Bush
1 1/2" CLS N/A
SFT50-25-5
1 1/2" CLS N/A
2" X 1 1/2" Bush
VSDOP-32
2" CLS N/A
2" TEE X
X- 2" X 1 1/4" Bush
FT125
* TAN. 3.0/3.0
O- 2" 90° STEEL
2" X 1" Bush
FT100
* SINGLE 3.0



L.R.



L.L.

L.R. TANDEM 6.4

421AK

L.L. 6.4

3.0

T.R. 35VQTB3

TRIP. COMMERCIAL

TL - TANDEM 3.0/3.0

TANDEM PLAZO

ENGINE - V10

GROUND DRIVE

STEERING

AIR HEAT

SECONDARY

CROSS

SHOE

BIN FILE

BIN W/LOAN

LEFT START TABLE

LEFT PRIMARY

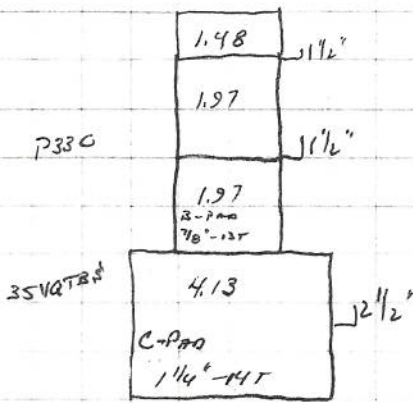
RIGHT PRIMARY

RIGHT START TABLE

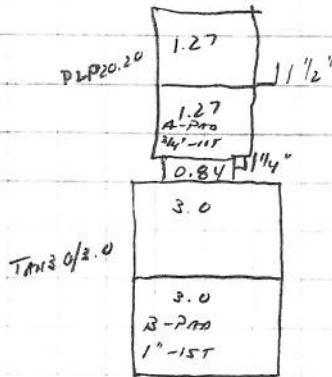
RIGHT START TABLE 1ST

BRAND CARGO PRESSURE

FLOORING



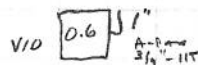
T.R.



T.L.

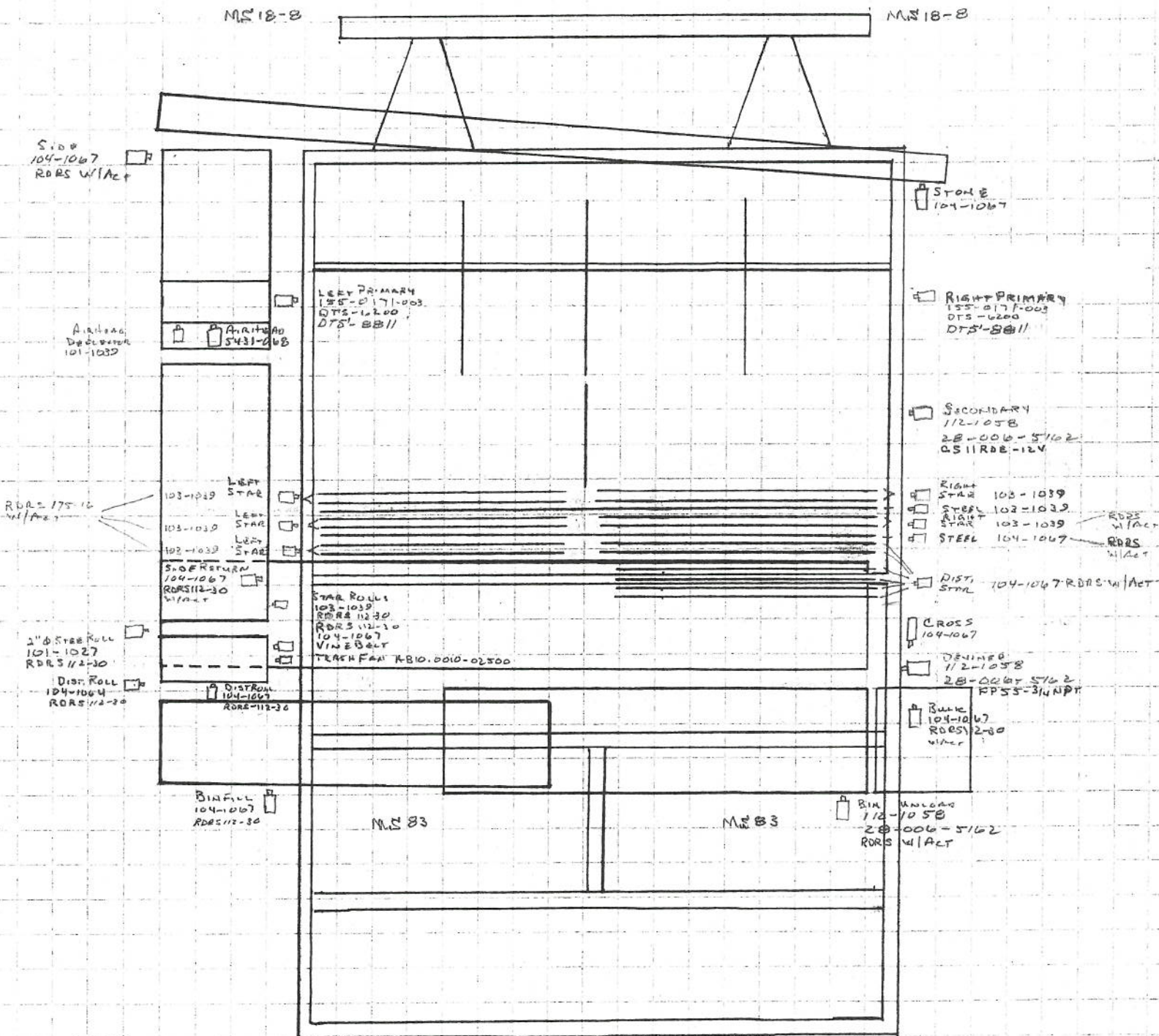
DURST - D13387 4PDD-1.20E-N11-B36H - CCH - CEN - CEN-2.5

DRIVE PLATE - TORSION CONTROLS 19310



ENGINE - QSK-15-450 H.P.

11/4/10
 #10039
 HARBACH
 HRS#65LH



1/4/10
 #10039
 HELLBACH
 HRSPT 6502H

