

#

21

10

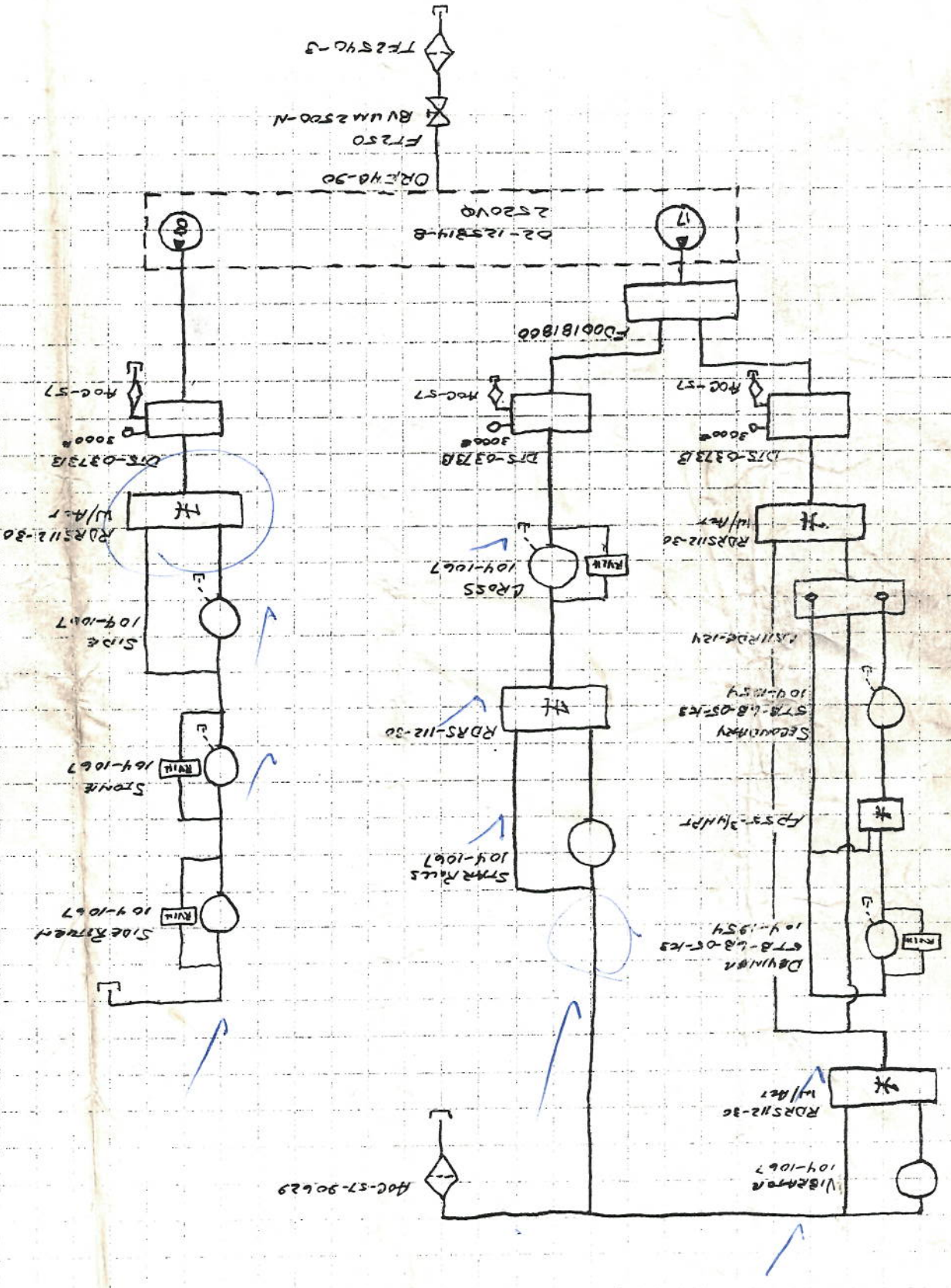
6

9

4/25/01

2001 - SECONDARY - GROSS - SIDE CIRCUITS

2520V0



TF2540-3
 BVUW2520-N
 FT250
 ORCHV8-30

02-125814-B
 2520V0

D00181800

MOC-57

DTS-0373B
 3000A

W/A-1
 RDRS112-30

SIDE
 104-1067

STONE
 RWR
 104-1067

SIDE RAILS
 RWR
 104-1067

RDRS112-30

STAR RAILS
 104-1067

DAYTON
 STB-L8-05-K3
 104-1067

FPT-34NPT

SECONDARY
 STB-L8-05-K3
 104-1067

RDRS112-30

W/A-1

DTS-0373B
 3000A

MOC-57

D00181800

AOC-57-90629

RDRS112-30

VIBRATOR
 104-1067

2001 SORTING - BRAKE CHARGE PRESSURE CIRCUIT

No. CASE FLUSHING

KTS-01-032 - M11

KT3-01-049 - M14

ORP32-90

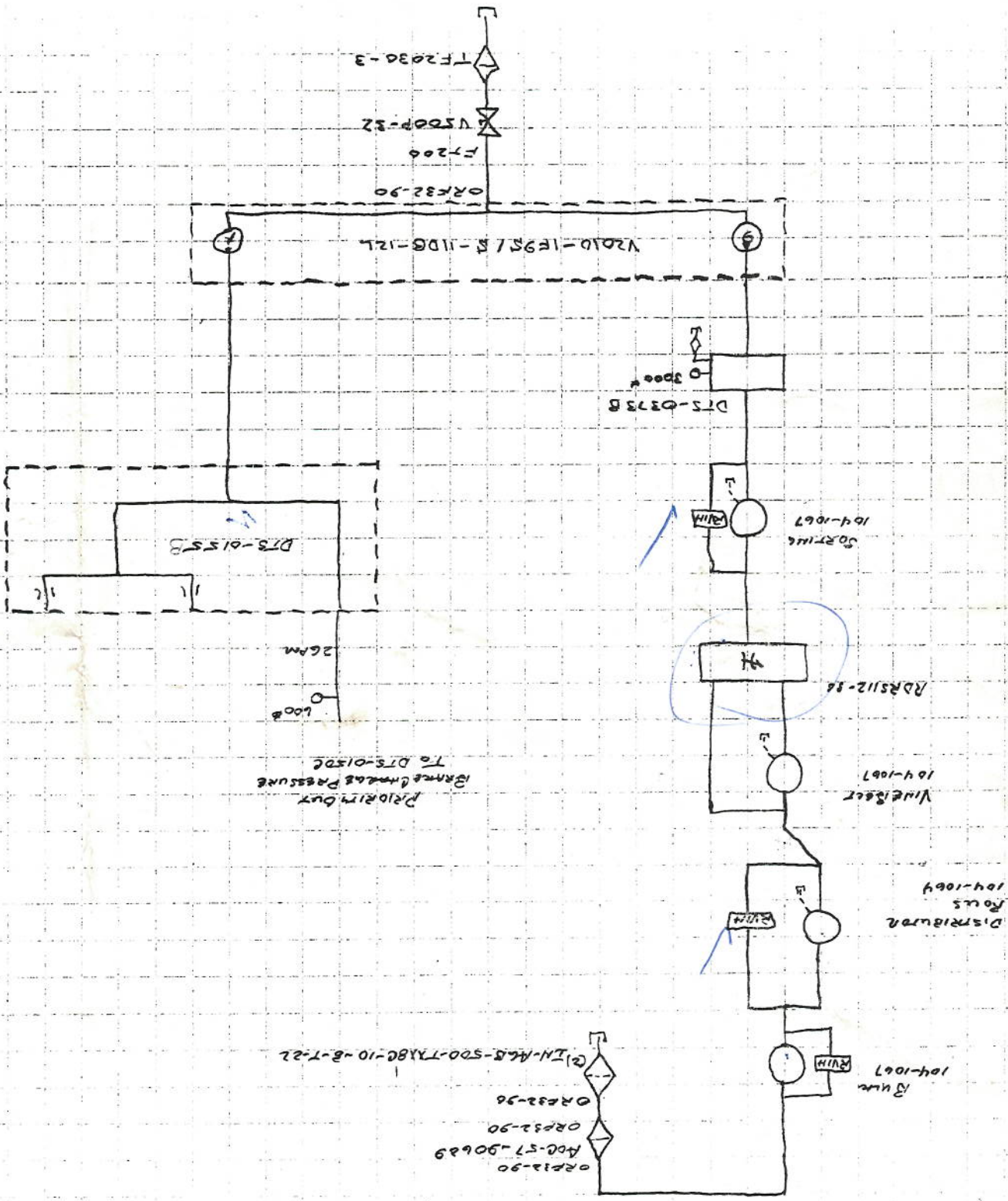
ADD-57-90629

ORP32-90

ORP32-90

ORP32-90

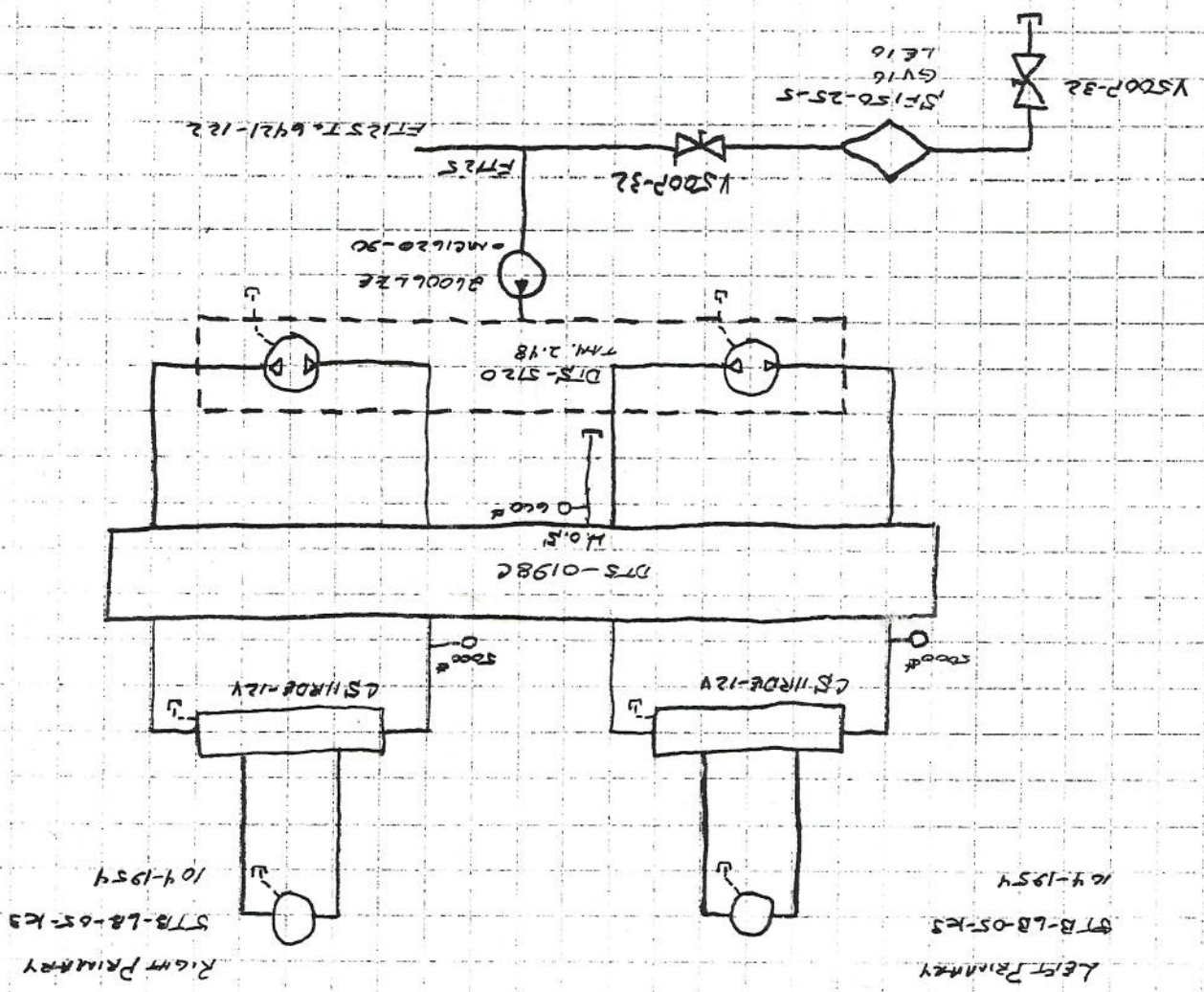
(2) IN-AIR-500-TXBC-10-B-T-22



4/25/61
#2106
#2110

E210L
E2110
4/25/01

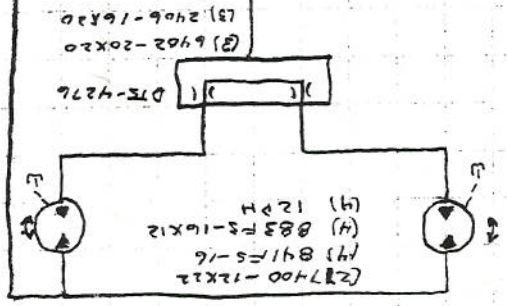
2001 PRIMARY CIRCUIT TANDEN 2.48



#2106
*2106
2110
4/25/01

2001 GROUND DRIVE
DURST KTS-01-032-M11
KTS-01-049-M14
#2106

M818-2-121-A18-1120-50
674376K
M818-B-121-A18-1120-50
71437800
#2106

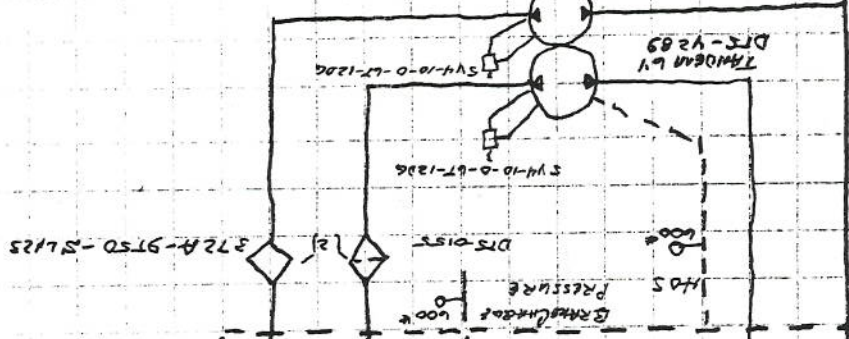


(2) 6462-20X20
(3) 2406-16X20

MSS5-2-221-F50-1120-2000
924379H
MSS5-2-221-F50-1120-2000
9243789V
(2) 000000011
(4) 6244750.12
(4) DTS-2349
(2) 634F-16K16
(2) 635F-16K16
#2106

M2110
MSS5-2-221-F50-1120-2000
3043701V
3743703B
MSS5-2-221-F50-1120-2000
#2106

GRABER
2-SPEED
GRABER
2-SPEED



SMX-L-200R/H
GRABER
MOS PRESSURE
GRABER
2-SPEED
2-SPEED

V500P-32
SF150-25-F GV16 LE10
F7125
V500P-20
DMS-4283
TAMOGAN 6V
5V4-10-0-6T-1206
5V4-10-0-6T-1206
DMS-015T
372A-9T50-SL125

M835
THOMPSON