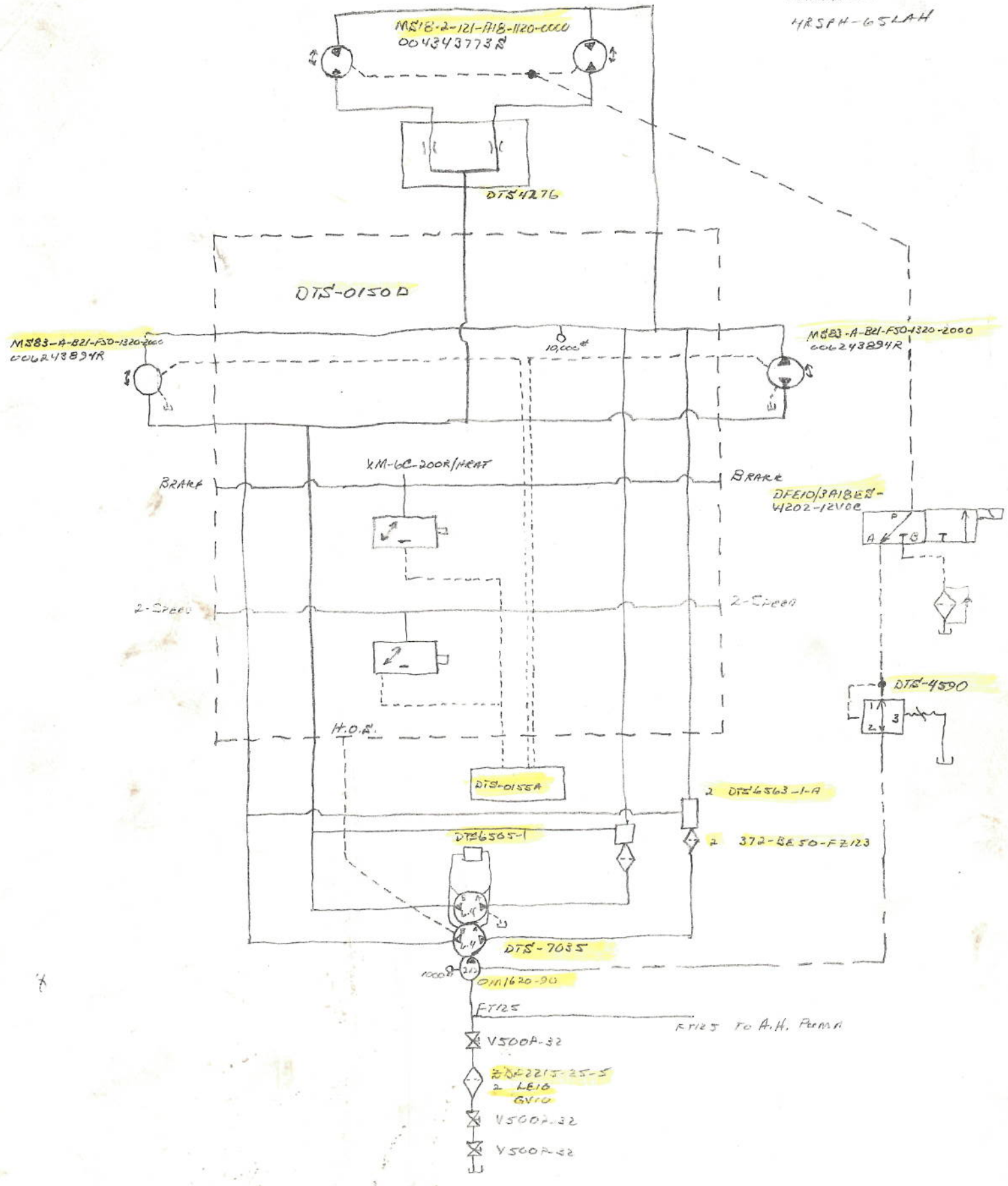


Paramount

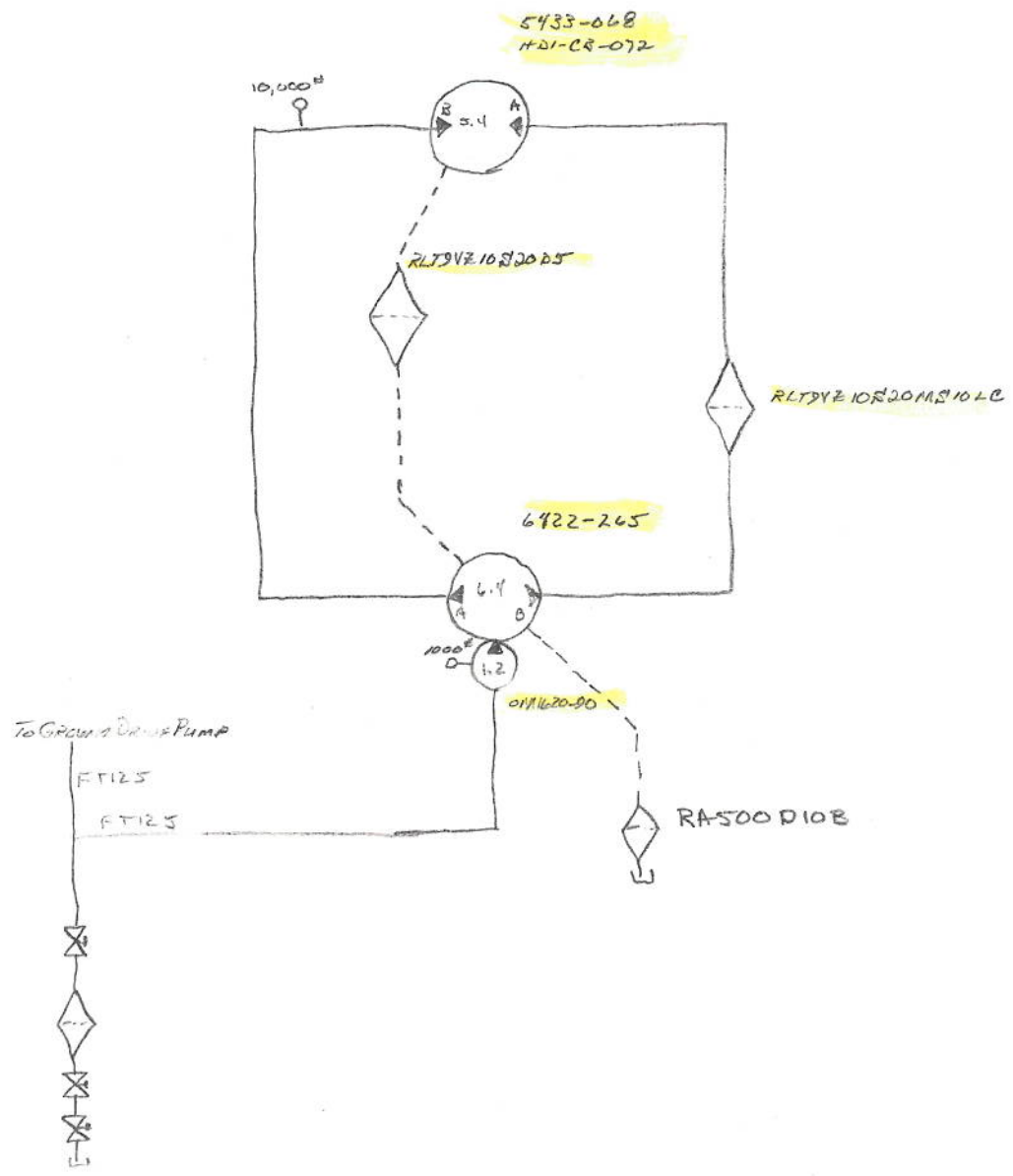
#09033

HRSPH w/65" AH

141101  
 #09083  
 PARAMOUNT FARM 3  
 HRSFH-65LAH

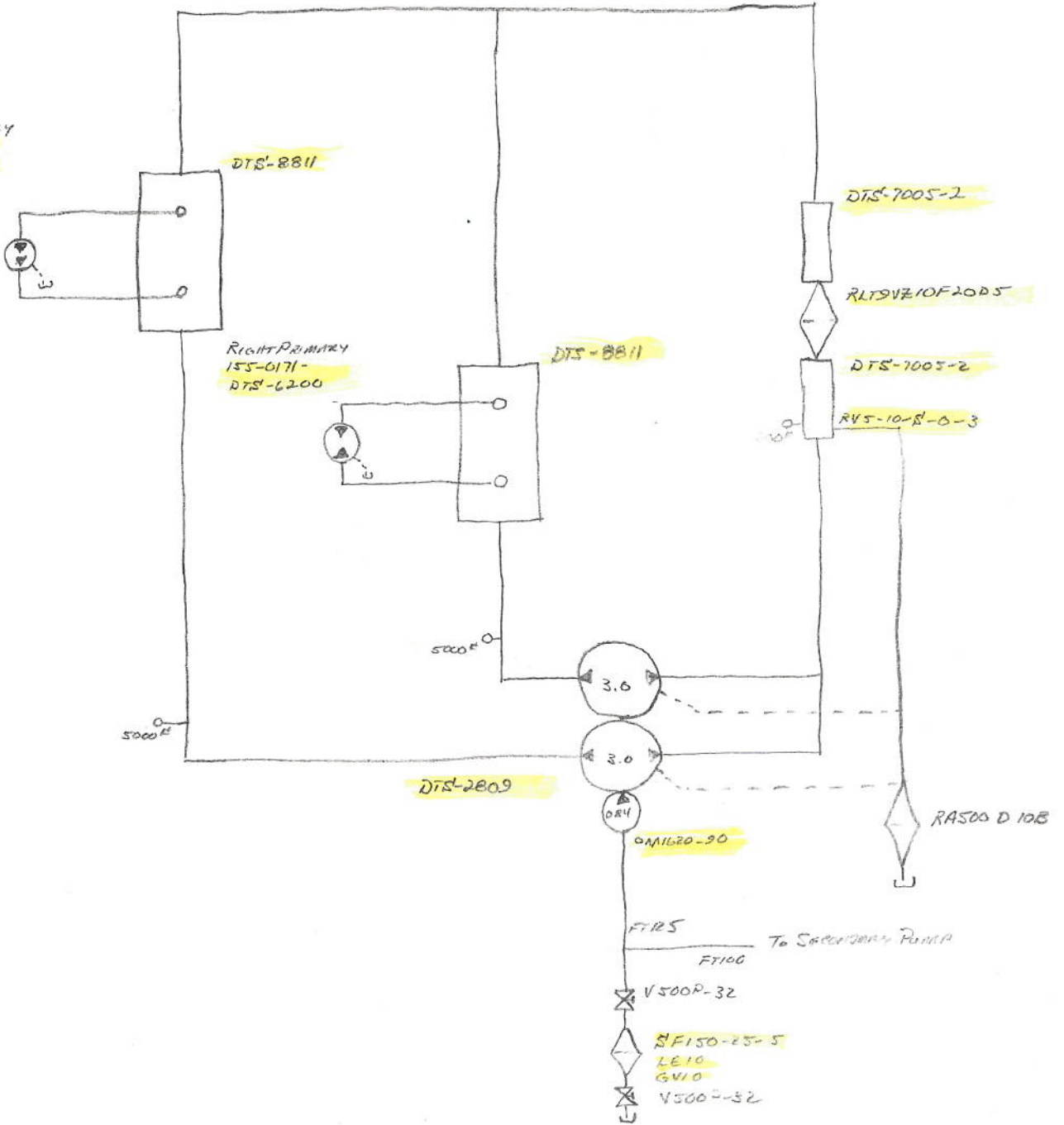


12/10/00  
#09033  
PARAMOUNT FARMS  
4RSPH-65LPH



14/16/00  
#02033  
PARAMOUNT FARMS  
4RSPH-65LAH

LEFT PRIMARY  
155-0171-  
DTS-6200

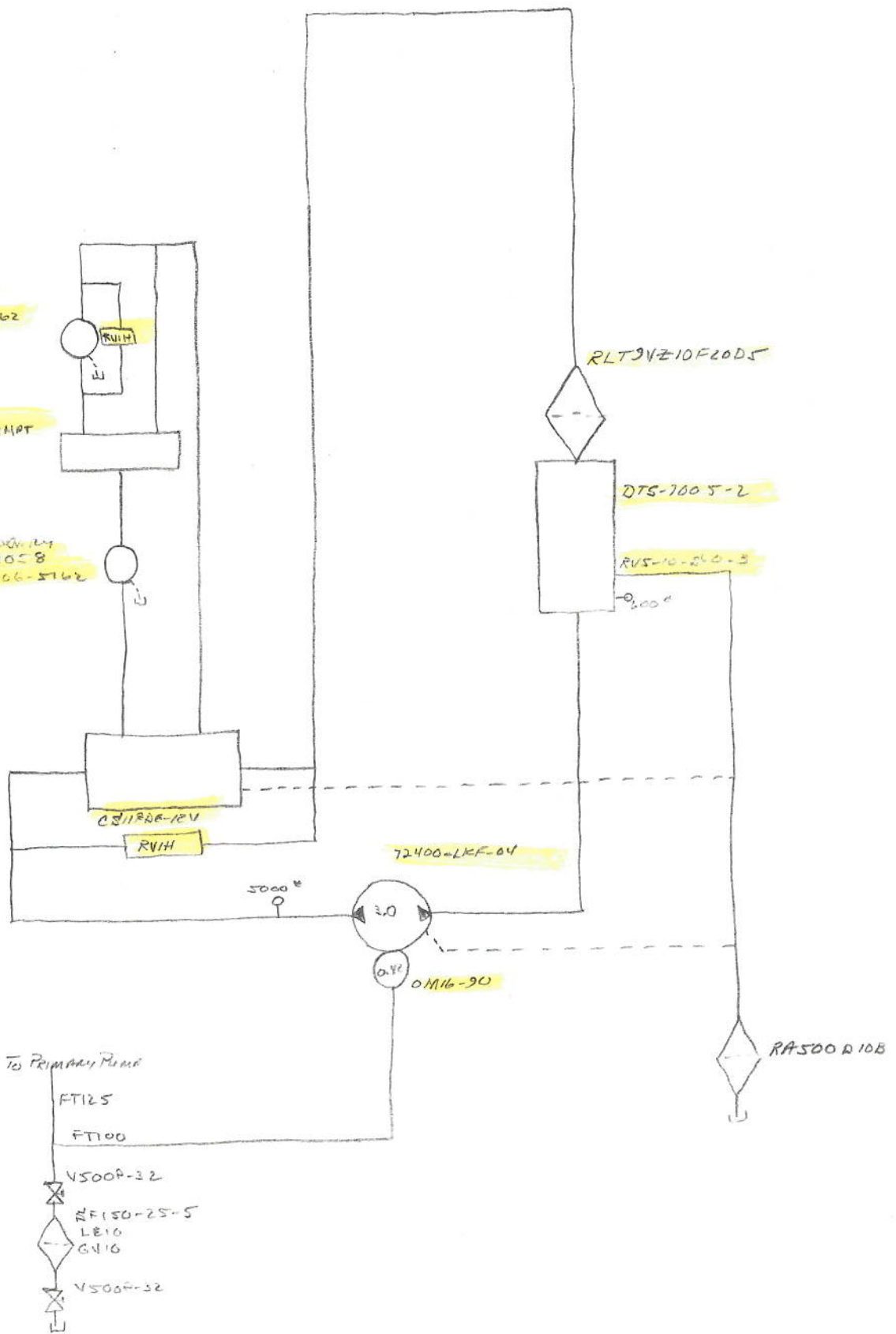


12/16/05  
#00033  
PARAMOUNT FORMAS  
HRSAH-65LHM

DEVIATOR  
112-1058  
28-006-5162

FPSS-314HAT

SEPARATOR  
112-1058  
28-006-5162



TO PRIMARY PUMP  
FT125  
FT100  
V500P-32  
LE10  
V500P-32

72400-LKF-0V

OM16-90

RLT3VZ10F20D5

DTS-7005-2

RVS-10-210-3

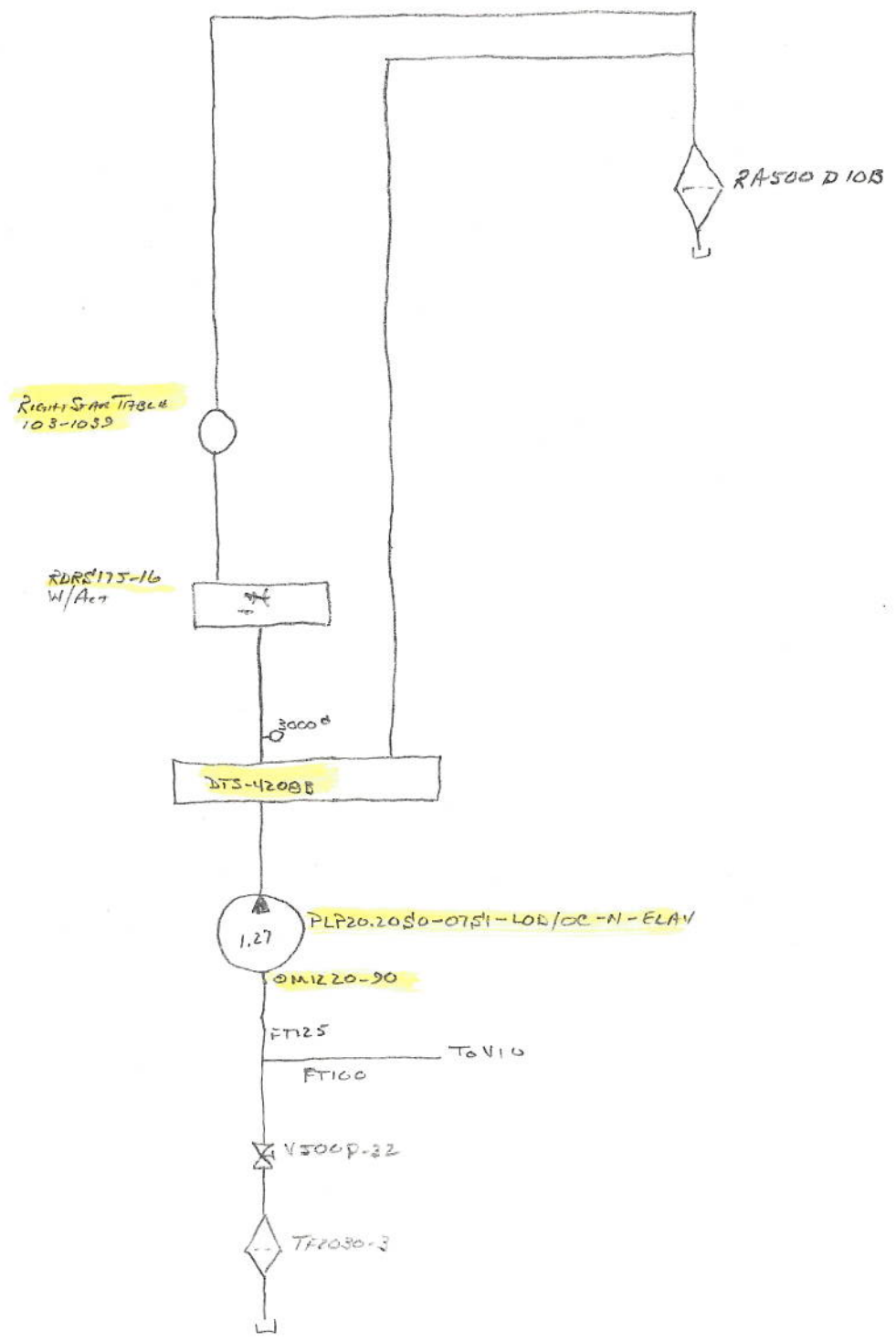
RA500 D10B

5000 psi

CS11826-12V

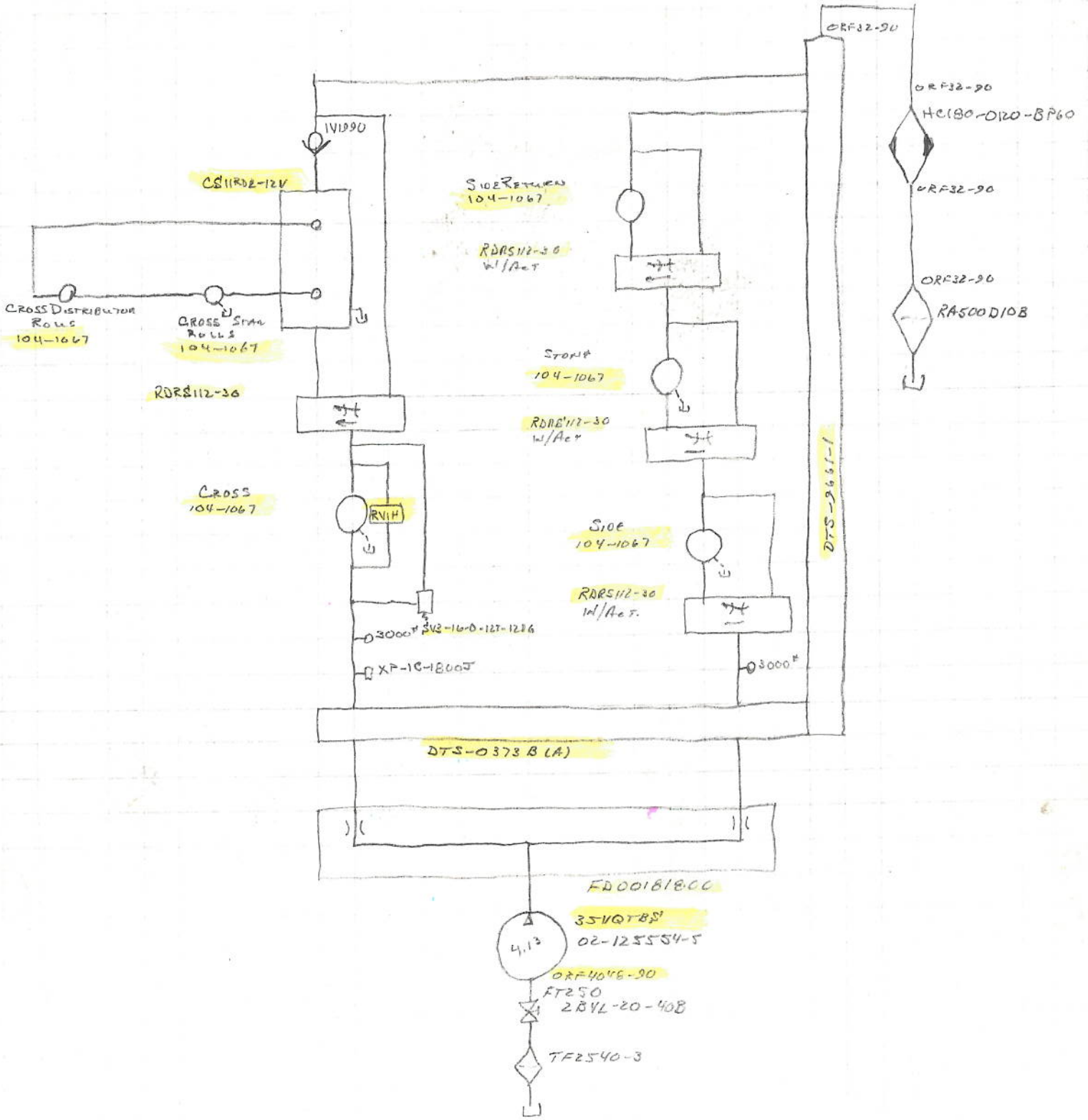
RV1H

1410100  
#09033  
PARADISE FARMS  
4R5A-65 LAM



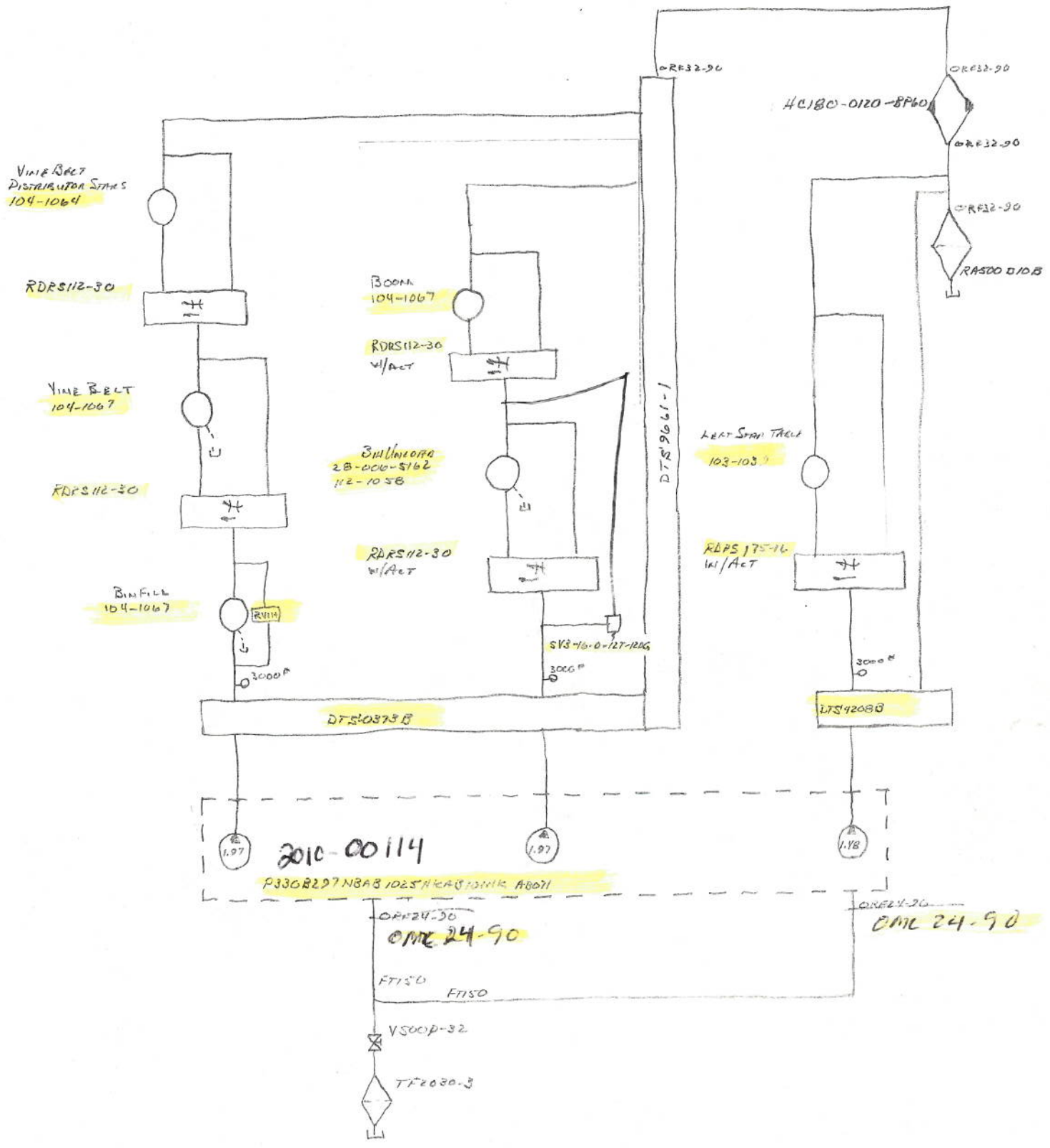
12/16/68  
 #09033  
 PARAMONT FARMS  
 4RSPH-65LAH

8  
 9  
 11



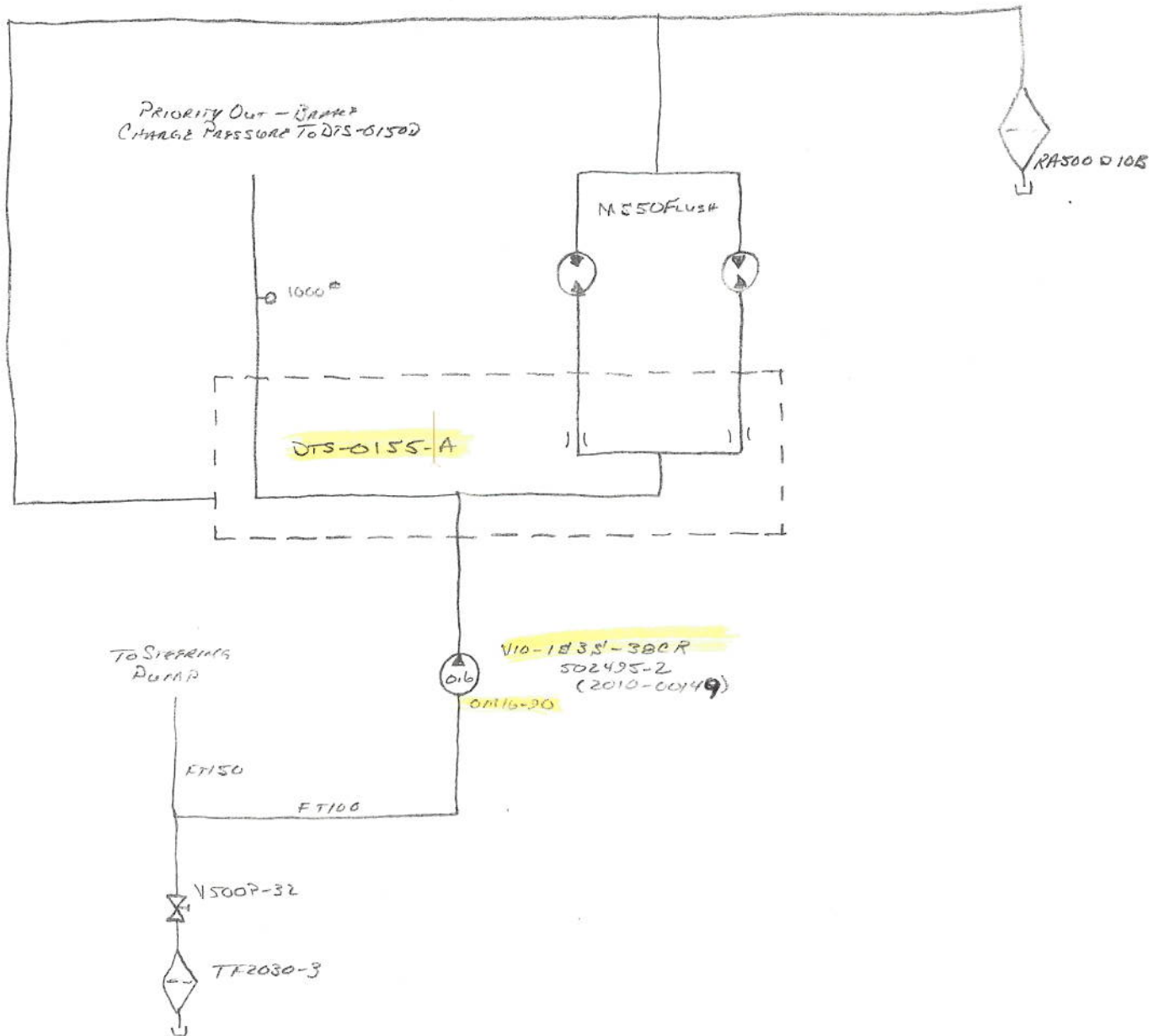


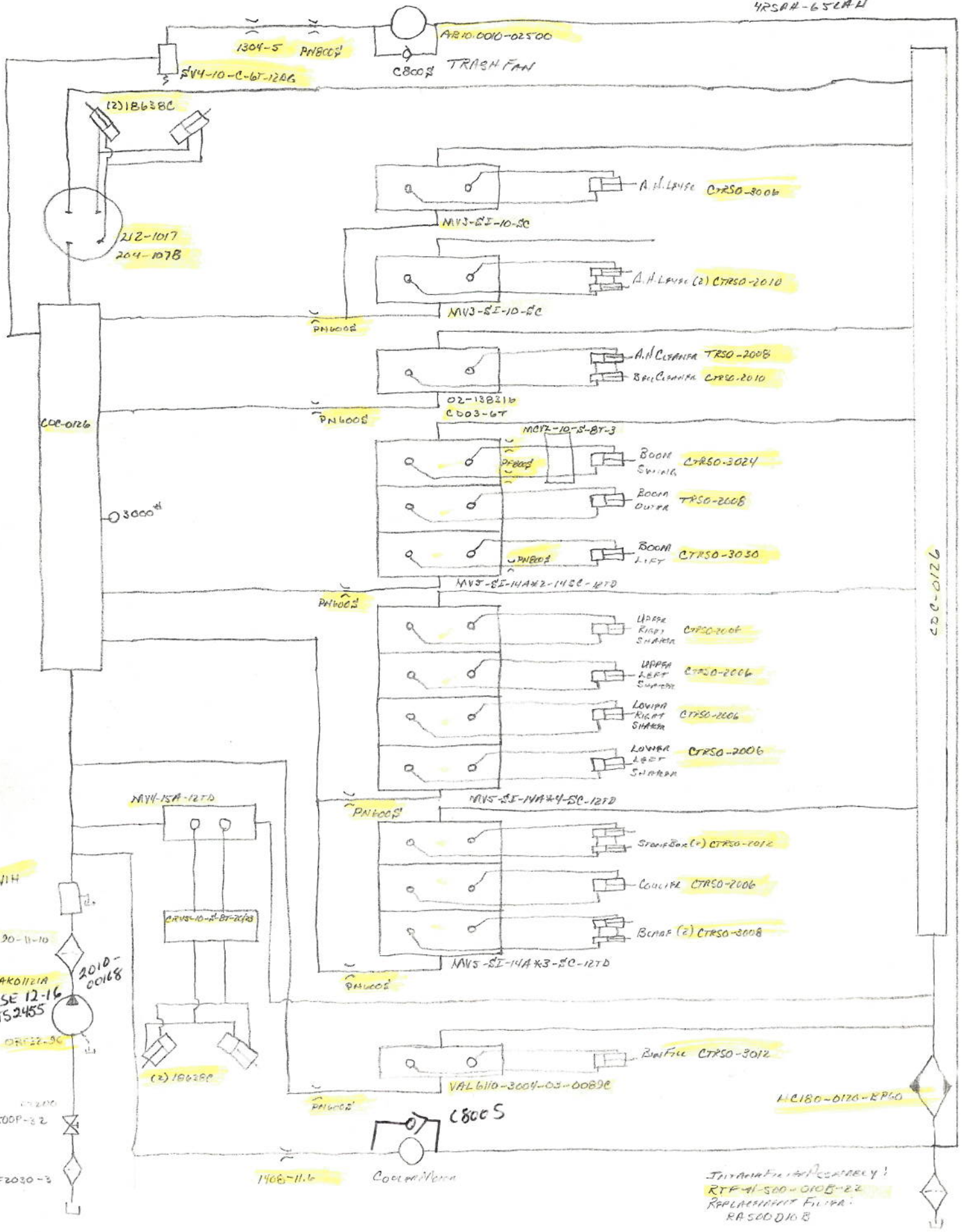
12/16/08  
#09033  
PARAMONT FARMS  
HRSFH-LSLAH





12/16/08  
#09033  
PARRMONT FARMS  
4RSPH-65LPH





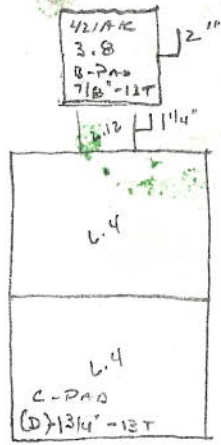
1304-5 PNB002  
 5V4-10-C-6T-1206  
 (2) 1B638C  
 212-1017  
 204-1078  
 C800S TRASH FAN  
 AR10-0010-02500  
 C800S  
 A.H. LIFT CTRSO-3006  
 MV3-SE-10-SC  
 A.H. LIFT (2) CTRSO-2010  
 MV3-SE-10-SC  
 PNB002  
 A.H. CLEANER TRSO-2008  
 801 CLEANER CTRSO-2010  
 02-13B210  
 C803-6T  
 PNB002  
 M072-10-S-BT-3  
 BOOM SWING CTRSO-3024  
 BOOM OUTRA TRSO-2008  
 BOOM LIFT CTRSO-3030  
 PNB002  
 MV3-SE-14A\*2-14SC-12D  
 UPPER RIGHT SHAKER CTRSO-2006  
 UPPER LEFT SHAKER CTRSO-2006  
 LOWER RIGHT SHAKER CTRSO-2006  
 LOWER LEFT SHAKER CTRSO-2006  
 PNB002  
 MV3-SE-14A\*4-SC-12D  
 Stamp Box (2) CTRSO-2012  
 COULPA CTRSO-2006  
 BEAR (2) CTRSO-3008  
 PNB002  
 MV3-SE-14A\*3-SC-12D  
 Bin Fill CTRSO-3012  
 VAL 6110-3004-03-008D  
 C800S  
 H.C180-0120-KP60  
 1408-11.6  
 C800S  
 C800S

IT'S A NEW FURNISH! RFP#1-500-0105-22 REPLACEMENT FURNISH: RA500D10B

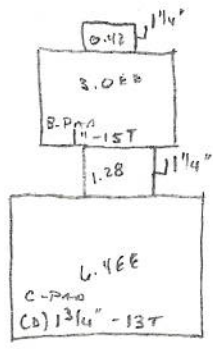
200-0126

P  
V  
X

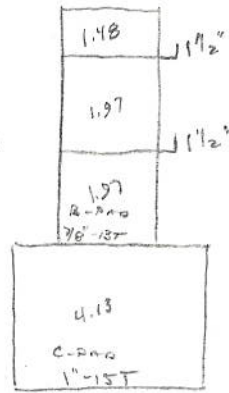
- ④  
TF2548-3  
2 1/2" 90° STEEL  
2 1/2" CUSHIA  
284L20-408  
FT250  
\* 35VQTB5
- ③  
8" X 2" BUSH  
2" CUSHIA  
V500A-32  
FT200  
~~V500A-32~~  
~~2" CUSHIA~~  
~~2" 90° STEEL~~  
ORF 32-90  
V45-32PR  
ZDF2215-15-5  
V43-32PR  
2" 90° STEEL  
2" CUSHIA  
V500A-32  
2" CUSHIA  
2" TEE  
2" X 1 1/4" BUSH  
2" 90° STEEL  
X FT125  
2" X 1 1/4" BUSH  
2" 90° STEEL  
O 2" X 1 1/4" BUSH  
FT125  
\* T6.4/6.4 \* L.4EE
- ③  
TF2030-3  
2" 90° STEEL  
2" CUSHIA  
V500A-32  
FT200  
\* 421AK
- ③  
2" 90° STEEL  
TF2030-3  
2" CUSHIA  
V500A-32  
2" TEE  
X 2" X 1 1/2" BUSH  
FT150  
\* TRIPLE COMB.  
2" 90° STEEL  
O 2" X 1 1/2" BUSH  
FT150  
\* TRIPLE COMB.
- ③  
TF2030-3  
2" CUSHIA  
V500A-32  
2" TEE  
X 2" X 1 1/4" BUSH  
FT125  
\* PLP20.20  
O 2" 90° STEEL  
2" X 1" BUSH  
FT100  
\* VID
- ④  
4" X 2" BUSH  
2" CUSHIA  
V500A-32  
2" X 1 1/2" BUSH  
1 1/2" CUSHIA  
2F150-25-5  
1 1/2" CUSHIA  
2" X 1 1/2" BUSH  
V500A-32  
2" CUSHIA  
2" TEE  
X 2" X 1 1/4" BUSH  
FT125  
\* TANDEM 3.0EE  
O 2" 90° STEEL  
2" X 1" BUSH  
FT100  
\* SINGLE 3.0EE



L.R. "C-PAD"



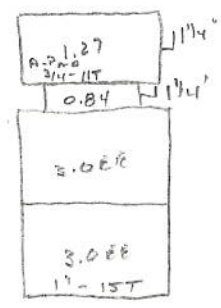
L.L. "C-PAD"



T.R. "C-PAD"

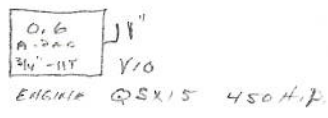
DURST

DRIVE PISTON - TORSION CIRCUIT 19310



T.L. "B-PAD"

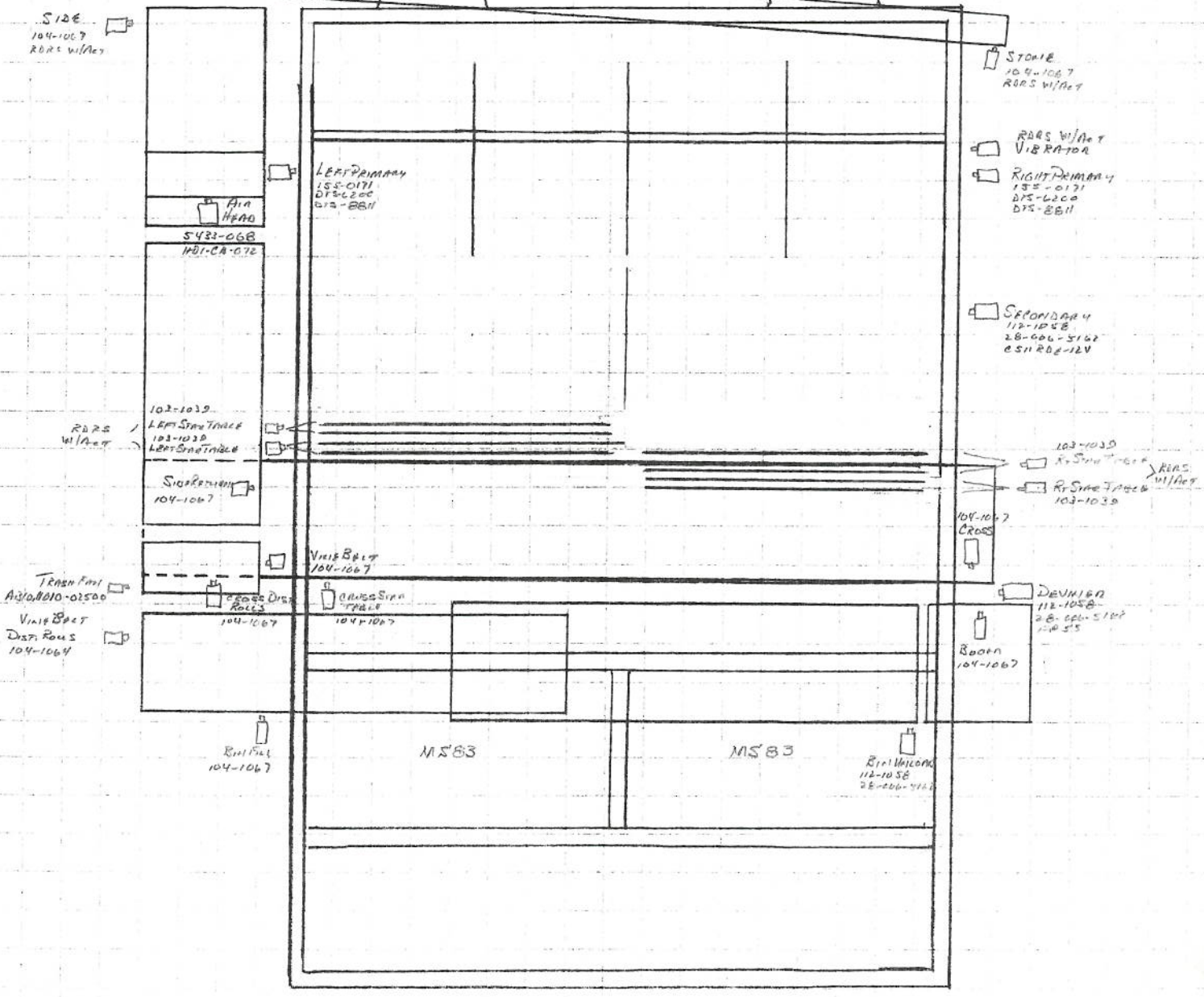
- L.R. TANDEM L.4
- 421AK
- L.L. L.4EE
- 3.0EE
- T.R. 35VQTB5
- TRIPLE COMBINATION
- T.L. TANDEM 3.0.
- PLP20.20
- ENGINE VID
- GROUND DRIVE
- SPEEDING CIRCUIT
- AIR HEAD
- SECONDARY
- CROSS SIDE
- BIN FILL
- BIN UNLOADER
- LEFT START TUBE
- LEFT PRIMARY
- RIGHT PRIMARY
- RIGHT START TUBE
- BRAKE CHANGE PRESSURE





MS18-2

MS18-2



RECEIVED 12/15/08

#09033

**Greg Merrihew**

From: "Paul Cieslewicz" <paul@bigironequipment.com>  
 To: "Greg Merrihew" <greg.m@lenco-harvesters.com>  
 Sent: Monday, December 15, 2008 12:54 PM  
 Attach: image001.emz  
 Subject: PARAMOUNT HARVESTER LAST UPDATE

*revised in head*

ANYTHING IN RED IS NEW THANKS

Standard Equipment:		Special Notes
Standard Equipment:		
Full Width Digger Bed		
QSM 360 HP Cummins Engine		
4 Wheel Drive		
Rear Tires: 6600-43 x 25 Terra		
Front Tires: 1400-24 x 12 Tires		
40" Cross		
MS 50 Rear Motors		
Front Steps		
Strobe Light		
Back-Up Beeper		
* 40" Air Head		
* 50" Air Head		
* 65" Air Head		
<b>Leveling:</b>		
* Mechanical	XXXXXX	
* Electrical		
	<i>Options</i>	
<b>Engine</b>		
* QSM-360 HP Cummins		
* QSM-400 HP Cummins		
* 9 Liter- 350 HP John Deere		
* 13.5 Liter 400 HP John Deere		
* QSX-450 HP Cummins	XXXXXX	
* QSX -510HP Cummins		
* 13.5 Liter 500 John Deere		
* 13.5 Liter 450 John Deere		
<b>Rear Tires</b>		
* 6600-43 x 25 Terra		
* 73x5000 -32	XXXXXX	
<b>Front Tires:</b>		
*17.5 x 24		
*1400 x 24 x 12		
*4800 x 25 x 12	XXXXXX	FIRESTONE
<b>Steering:</b>		
*No Rear Steering		
*37 Degree Rear Steering	XXXXXX	EXTRA RAM ON FRONT STEERING
<b>Front Wheel Motors:</b>		
*MS 18		
*MS 18 Plus 20%	XXXXXX	WITH 10" SPACER
<b>Rear Wheel Motors:</b>		
*MS 50		
*MS 83	XXXXXX	
<b>Row Spacing</b>		
* 32" with 30" chain		
* 34" with 32" chain		
* 36" with 33" chain	XXXXXX	
* 36" with 34" chain		
* 38" with 36" chain		
<b>Digger Blade Bracket</b>		
* Standard		
* Rock Guard	XXXXXX	
<b>Digger Blades</b>		
* Regular Straight		
* Extended Straight		
* Clod Blades		
* Sand Blades		
* Full Width Solid Blade ¾" x 12"	XXXXXX	
*Regular Straight w/ Plastic Under		



*Full Width Solid 3/4" X 12 w/ Bevel		
*Full Width Solid 3/4" X 12 w/ Rod		
<b>Center Blades</b>		
* 12"		
* 15"	XXXXXX	ONLY 3 CENTER ONES NOT ON ENDS ENDS TO SIDE PLATES
<b>Primary Bed</b>		
* Full Width Common Lift	XXXXXX	
* Full Width Side to Side Control		
<b>Primary Drive</b>		
*Top Drive	XXXXXX	WITH ANTI WRAP BARS
* Reverse Drive		
<b>Primary Bed Chains</b>		
* Single Width Belted	XXXXXX	
* Double Width Belted		
<b>Primary Belted Chains</b>		
* 45 mm All Straight Belted Chains		
* 45 mm 2 Down & 1 Straight Belted Chains	XXXXXX	
* 50 mm All Straight Belted Chains		
* 50 mm 2 Down & 1 Straight Belted Chains		
* 50 mm 1 Up & 2 Down Belted Chains		
* 56 mm All Straight Belted Chains		
Lockwood Style Chain, Double Belt Middle		
Double Width Single Belt Middle		
<b>Secondary Bed Chains</b>		
*Single Belted SRT		
*Full Belted SRT	XXXXXX	2 CHAIN
<b>Secondary Belted Chains</b>		
* 45 mm All Straight SRT		42MM AL STRAIGHT SRT
* 45 mm 2 Down & 1 Straight SRT		
* 50 mm All Straight SRT		
* 50 mm 2 Down & 1 Straight SRT		
<b>2nd Secondary</b>		
*No 2nd Secondary	XXXXXX	
*2nd Secondary Belted Chain		
<b>2nd Secondary Belted Chain Width</b>		
*No Second Secondary	XXXXXX	
*Single Belted Chains		
*Full Belted SRT		
<b>2nd Secondary Belted Chains</b>		
*No 2nd Secondary	XXXXXX	
*45mm All Straight SRT		
*45mm 2 Down & 1 Straight SRT		
*50mm All Straight SRT		
*50mm 2 Down & 1 Straight SRT		
<b>2nd Secondary Star Table Options</b>		
* No Star Table Option		4 ROLLS IN SECONDARY EACH SIDE
* 5 Stars with Distributor Stars on Cross		
* 6 Stars with 2 Adjustable Smooth Roll and Distributing stars on cross, extra star roll on left		
<b>Primary Drive Option</b>		
* 6,000 Hydraulic Motor w/Chain		
* 6,000 Hydraulic Motor w/Gear Box		
* VIS Direct Drive Motor	XXXXXX	
<b>Secondary Drive Option</b>		
* 6,000 Hydraulic Motor w/Chain		
* 6,000 Hydraulic Motor w/Gear Box	XXXXXX	
<b>2nd Secondary Drive Option</b>		
*No Secondary	XXXXXX	
*6,000 Hydraulic Motor w/Chain		
*6,000 Hydraulic Motor w/Gear Box		
<b>Deviner Drive Option</b>		
* 6,000 Hydraulic Motor w/ Chain		
* 6,000 Hydraulic Motor w/ Gear Box	XXXXXX	
<b>Reversing Valve Option</b>		
*No Reversing Valves		
*Primary	XXXXXX	
*Secondary-Deviner	XXXXXX	
*2nd Secondary		
<b>Vibrator</b>		
*No Vibrator		2 SETS IN PRIMARY WITH SIDE LEFT

		AND
*Rotating Hydraulic Shaker Primary		RIGHT CONTROLS
*Rocking Hydraulic Shaker Primary		
*Rotating Hydraulic Shaker Secondary		
*Lift in Shaker	XXXXXX	
<b>Override Chain</b>		
*150 mm	XXXXXX	
*180 mm		
*200 mm		
<b>Vine Coulters</b>		
*Double Disk Coulters-Shorter Hub-Spudnik	XXXXXX	
*Kickers		
<b>Bulk Loader</b>		
*35"		
*40"	XXXXXX	
<b>Bulk Loader Chain</b>		
*40 mm All Straight SRT		36MM CHAIN
*45 mm All Straight SRT		
<b>Self Leveling System</b>		
*No Leveling System	XXXXXX	
*Hydraulic Rear Cross & Side Elevator		
<b>Rear Cross</b>		
*40" Cross		
*48" Cross	XXXXXX	
<b>Rear Cross Chain</b>		
*45 mm All Straight SRT		42MM STRAIGHT SRT
*50 mm All Straight SRT		
<b>Rear Cross Table Option</b>		
*No Star Table Chain Only		12 PT STARS ONLY
*Star Table	XXXXXX	
<b>Vine Belt Option-Top Side Elevator Return Co</b>		
*No Vine Belt		
*40" Vine Belt w/Fan and Distributing Stars		
*50" Vine Belt w/Fan and Distributing Stars		
*65" Vine Belt w/Fan and Distributing Stars	XXXXXX	
*40" Vine Belt w/Fan and Stars w/Distributing		
*50" Vine Belt w/Fan and Stars w/Distributing		
*65" Vine Belt w/Fan and Stars w/Distributing		
<b>Lower Side Elevator Ellis Star Table</b>		
*No AFE Table	XXXXXX	
*AFE Table		
<b>M-Table</b>		
*No M-Table Option	XXXXXX	
*40" with Dist Stars		
*50" with Dist Stars		
*65" with Dist Stars		
<b>Sort Table or Bin Fill</b>		
*No Sort Table (if ordering Bin)	XXXXXX	
*35"		
*40"		
<b>Sort or Bin Fill Table Belted Chain</b>		
*No Belted Chain		36MM CHAIN
*45mm All Straight SRT		
*50mm All Straight SRT		
<b>Stone Conveyor</b>		
*Belted Chain	XXXXXX	
*Hook Chain		
<b>Bin</b>		
*No Bin		
*Bin with In Tank Fill Conveyor and Sonic	XXXXXX	
*35" Fill Conveyor		
*40" Fill Conveyor		
*Flights on Belt, "V" shaped every 24"		
<b>Hydraulic Gauges</b>		
* Electronic	XXXXXX	
* Mechanical		
<b>Camera Systems:</b>		
<b>Deflector for AirHead Discharge:</b>		
<b>Flow Controls</b>		



*Flow Control with Actuator		
*Flow Control with Actuator and Gauge		
Primary Plates: 4" extensions on outside	XXXXX	
Raise Cab 12":	XXXXX	171" TO TOP OF MACHINE
Stone Conveyor Flooring:		
*Open under Airhead	XXXXX	BELTED CHAIN PAN ON BOTTOM
*Solid under Airhead		

**Comments:**  
 SIDE ELEVATOR CHAINS TO BE 42MM  
 FLO CONTROL ON STONE CHAIN W/SWITCH IN CAB  
 FLO CONTROL ON TOP SIDE ELEVATOR W/SWITCH IN CAB  
 FLO CONTROL ON BOOM CHAIN W/SWITCH IN CAB  
 FLO CONTROL FOR BIN AND OUTER BOOM VISABLE FROM CAB  
 BIN SHUT OFF  
 REINFORCE BOOM PIVOT  
 CUT OUT TANK FOR VISABLITY

Estimated Delivery Date:	Date:
Customer:	Date:
Dealer:	Date:
Manufacturer:	Date:

LARGE JOYSTICK TO HANDLE THE DOUBLE SHAKER  
 PLASTIC LINER IN TUB

EXTRA BRACE ON FRONT STEERING  
 RUBBER TRI SHAKERS R7016003S  
 RAISE STEP ABOVE ROCK CHAIN 4"

FILL GAP IN ON SIDES OF PRIMARTY  
 LARGER FUEL TANK 75 GAL ?  
 ADD SHUT OFF TO REAR CROSS AND REVERSING VALVE TO REAR CROSS STAR TABLE  
 FLOOR GREAT MATERIAL NOT TO GO UNDER ANY STEEL PIPES  
 TALLER SIDE TIN ON PRIMARY BED

Please Indicate Noffsinger or Broekema (N=Noffsinger / B=Broekema)

Mfg.	Chain/Location	Qty	Rod Size	Width	MM	LPR	Pattern	Covering
	Primary							
	Secondary							
	Deviner							
	Cross							
	Lower Side							
	Upper Side							
	BulkLoader							
	Bin Fill							
	Belted Stone							

AFE #	Desc	Brand	Loc
2003-00182	1/2x33x45mm 2x60 2DNPL-1STPL HT - 121+ (18') Clips Loose One End	Noff	Primary (4)
2003-00183	7/16x68x42mm 3x60 STSRT - 108+ (16') Clips Loose One End	Broekema	Secondary 1st
2003-00184	7/16x68x42mm 3x60 STSRT - 122+ (18') Clips Loose One End	Broekema	Secondary 2nd
2003-00185	5/8x68x150mm 2x60 STSRT - 63+ (31') Clips Loose One End	Noff	Deviner (2)
2003-00186	7/16x48x42mm 2x60 STSRT - 203+ (30') Clips Loose One End	Broekema	Rear Cross
2003-00189	7/16x40x36mm 2x60 STSRT - 229+ (27') Clips Loose One End	Noff	Bulkloader
2003-00190	7/16x40x36mm 2x60 STSRT - + (39') Clips Loose One End	Noff	Bin Fill Conveyor
2003-00199	7/16x65x42mm 3x60 STSRT - 363+ (50') Clips Loose One End	Broekema	Lower Side
2003-00200	7/16x65x42mm 3x60 5STSRT-1STCushion Dome - 298+ (41') Clips Loose One End	Broekema	Upper Side
2003-00303	7/16x14x28mm 2x60 STPL 459+	Noff	Belted Stone Conv





# HYDRAULICS FINISH MATERIALS LIST

BEGINNING DATE  
END DATE

PROJECT NO. 030734

QTY	PART NUMBER	DESCRIPTION
16	2035-00006	5" BLACK ACE
65	2035-00004	4" BLACK ACE
81	2035-07002	1 1/2 STAND OFF
8	2035-04000	SEALED NOSE CONE ROLLER
101	2035-01009	3 1/2" STEEL FLANGED
45	2035-01008	3 1/2" STEEL W/OUT FLANGE
11	2035-03001	R11A1 (LONG)
2	2035-03000	R11 (SHORT)
30	2035-01015	3 1/2" RUBBER W/FLANGE
11	2035-01016	3 1/2" RUBBER W/OUT FLANGE
1	2035-01004	3 1/2" RUBBER W/8" FLANGE
8	2035-H45M12E4	PRIMARY SPROCKET
6	2035-H42M14RE4X	SECONDARY SPROCKET
4	2035-H42M10E4	LOWER SIDE (A.H.) SPROCKET
3	2035-H42M10RE4X	UPPER SIDE SPROCKET
4	2035-H36M12RBSX	BULK/BIN FILL SPROCKET
2	2035-H42M10RBSX	CROSS SPROCKET
2	2035-H28M12B5	STONE SPROCKET
16	2035-02006	R70160055 SHAKER
4	2035-01005	2 1/2" STEEL NO FLANGE
8	2035-07029	BUSHING
8	2035-07030	BUSHING
4	30054-013	3/4" FLAT DIGGER BLADE
3	30025-013	CENTER POINT - EXTENDED
1	30024-013	CENTER POINT

# HYDRAULICS FINISH MATERIALS LIST

BEGINNING DATE  
END DATE

PROJECT NO.

QTY	PART NUMBER	DESCRIPTION
1	2024-0100	660-1524 NIPPLE
1	2024-0098	660-1508 NIPPLE
2	2024-0091	505-1210 CLAMP
2	2024-0111	705-1013 CLAMP
4	2030-02048	BRES2F
1	2021-23288	24 FT CONTROL CABLE
25FT	2024-0082	5/8" HEATER HOSE
25FT	2024-0083	3/4" HEATER HOSE
1	2024-0133	REC. / DRYER A/C
1	2024-0080	CONDENSER A/C
1	2024-0120	PRESS. SWITCH A/C
1	2024-0134	A/C COMPRESSOR
1	2024-0020	A/C HOSE KIT
1	2024-0186	LT 75 FUEL CHECK
4	2024-0089	505-1206 CLAMP
7FT	2024-0154	3/8" FUEL HOSE
18	2001-0263	3/8" EYE
6	2001-0264	1/2" EYE
28FT	2001-0262	2/0 BATTERY CABLE
3	2001-0260	BLACK HEAT SHRINK (12")
3	2001-0259	RED HEAT SHRINK (12")
1	2023-0206	DURST 4 HOLE GEAR BOX
1	2023-0202	DURST COUPLER
1	2023-0197	DRIVE PLATE
40 SQ FT	2009-01000	DIAPHRAM BELT
30FT	2009-01005	5" SKIRT RUBBER
12 SQ FT	2030-02057	BLACK 1" FOAM
1	2030-02078	1/2" TREATED PLYWOOD



# HYDRAULICS FINISH MATERIALS LIST

BEGINNING DATE  
END DATE

PROJECT NO.

QTY	PART NUMBER	DESCRIPTION
80 <sup>SQ</sup> <sub>FT</sub>	2009-01007	3/8" BELTING
2	2024-0114	705-1026 CLAMP (A/C)
24	2001-0261	3/0 SOLDER PELLET
1	40006-012	DEPTH GAUGE BRKT
2	2024-0018	ENGINE SCREEN
1	2024-0018	COOLER SCREEN
50 <sup>SQ</sup> <sub>FT</sub>		UHMW 16
1 <sup>SQ</sup> <sub>FT</sub>		UHMW 12
80 <sup>SQ</sup> <sub>FT</sub>		UHMW 08
240 <sup>SQ</sup> <sub>FT</sub>		UHMW 04
5	2017-03012	3/4" BALL VALVE
3QT	2036-0005	80W 90
1QT	2024-0177	15W 40
4	2030-02057	DSR 2460 COULTER
4	31011-007	COULTER CAP PROTECTOR
2	2001-0239	44030 BATTERY DISCONNECT
2	2001-0296	44032 DISCONNECT NAME PLATE
8	2001-0062	728006 BATTERY NUT
4	2001-0064	BATTERY (VEST. AUTO)
13"		1/4"-28 ALL THREAD
1	2001-0039	FUEL PUMP FRB-5-1
1	2024-0019	8" TURBO II PRECLEANER
1	2009-03010	BIN BELT
4	2030-02028	CAB MOUNT
1	2006-302048	TAPER LOCK
1	2006-302028	TAPERLOCK
2	2029-0008	PX120 FLANGE
1	2029-0007	PX120 ELEMENT
250 <sup>CALL</sup>	2036-0001	UNIVIS N68
8	#10x3/8 PAN HEAD	MACHINE SCREW

# HYDRAULICS FINISH MATERIALS LIST

BEGINNING DATE  
END DATE

PROJECT NO.

QTY	PART NUMBER	DESCRIPTION
1	2002-01	SLOW MOVING SIGN
2	2002-17	SERIAL # PLATES
2	2002-04	AFE DECAL
7	2002-05	LARGE Lenco
6	2002-06	SMALL Lenco
5	2002-14	THROWN OBJECT HAZARD
1	2002-09	OVERHEAD WING HAZARD
17	2002-16	DANGER - MOVING PARTS
4	2002-08	DANGER - HI PRESS. FLUID
4	2002-10	WARNING - ROTATING PARTS
9	2002-07	WARNING - MOVING PARTS
4	2002-19	DANGER - PINCH POINT (↔)
1	2002-12	DANGER - PINCH POINT (↕)
1	20007-002	DEPTH GAUGE DECAL
1		75R5641 (#10) A/C FITTING
1		75R5648 (#8) A/C FITTING
2	30007-003	CAB LIFT BRACKET
160	5/8-11 x 3 1/2" HHCS	
25	5/8-11 x 4" HHCS	
20	5/8-11 x 4 1/2" HHCS	
20	5/8-11 x 5" HHCS	
25	5/8-11 x 5 1/2" HHCS	
15	5/8-11 x 6" HHCS	
5	5/8-11 x 10" HHCS	
270	5/8 SPINLOCK	
10	1/2-13 x 2 1/2" HHCS	
10	1/2-13 x 3 1/2" HHCS	
10	1/2-13 x 4 1/2" HHCS	
10	1/2-13 x 5 1/2" HHCS	
10	1/2-13 x 7 1/2" HHCS	
50	1/2-13 SPINLOCK	



PARAMOUNT '09

Thermo-King  
Fitting Hose Fitting

25 1/2 FT 1.

70R46015

#12 Hose CAB/PUMP

#12 Hose To #10 Fitt.  
STR-ML Insert

100" 2.

70R44085

#8 Hose Pump/COND

70R44085

23 FT 3.

70R44965

#6 Hose CAB/REC-DEYER 70R45065

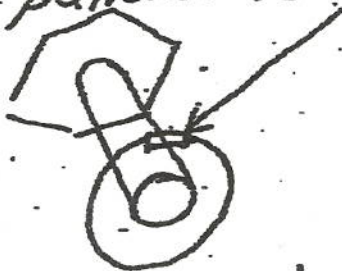
92" 4.

BLF 19315

#6 Hose

Bottom/COND/REC-DEYER 70R44965

Painted numbers on Hose at 12 O-Clock



11 O-Clock



12 O-Clock

COMPRESSOR SERVICE FITTING

1 - 75R5641 (#10)

1 - 75R5648 (#8)