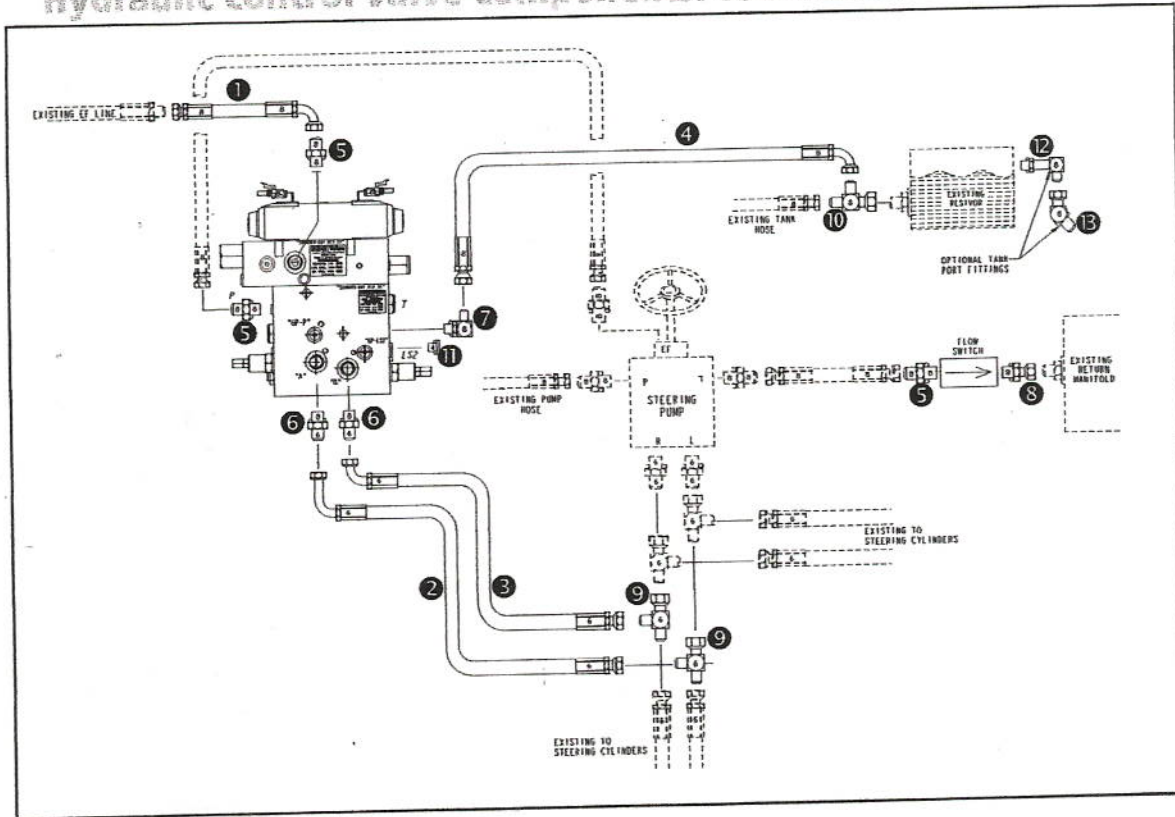


17083

Hersford

2 or 2

Hydraulic control valve components: 854 model



Item	Description	Part number
1	52" hose	451TC0639-08-08-08-52
2	36" hose	451TC0641-06-06-06-36
3	35" hose	451TC0639-06-06-06-35
4	29" hose	451TC0639-08-08-08-29
5	Fitting (x3)	8 F50X-S
6	Fitting (x2)	6-8 F50X-S
7	Fitting	8 C50X-S

Item	Description	Part number
8	Fitting	8 F650X-S
9	Fitting (x2)	6 R6X-S
10	Fitting	8 R6X-S
11	Fitting (x2)	4 HP50N-S
12	Fitting	8 CC50X-S
13	Fitting	8 V6X-S

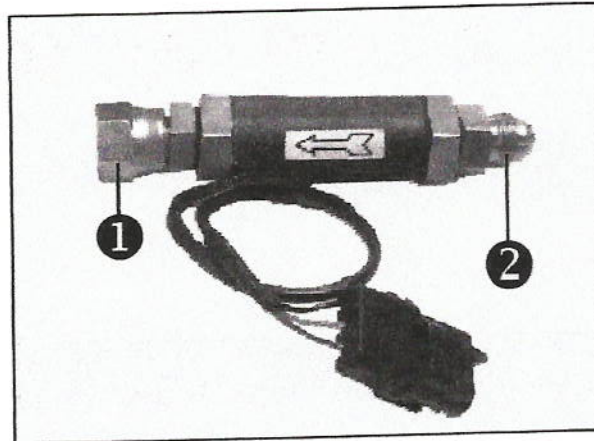
Note – Part numbers are Parker numbers and are for reference only.

Installing the flow switch: 854 model

Step 1

Attach a -8 JIC female swivel ❶ to the down-stream side of the flow switch. Install a -8 JIC male fitting ❷ to the up-stream side of the flow switch.

The arrow on the flow switch points in the direction of oil flow.

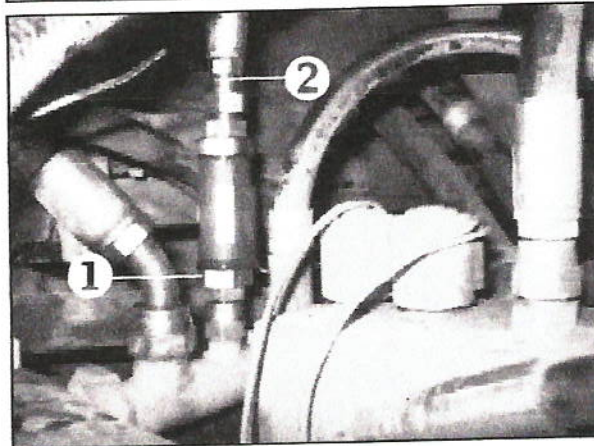


Step 2 854 model (1997-99)

Note – Be prepared: In this step oil will flow from the connection.

Locate the tank line on the steering unit and follow it rearward to the tank hard line. Disconnect the steering unit tank line where it attaches to the tank hard line.

Attach the female fitting on the flow switch to the tank hard line male fitting ❶ with the flow direction arrow pointing to the tank hard line. Attach the tank line female end from the steering unit ❷ to the flow switch.



DTS Q&A

- CROSS CIRCUIT - PRESSURE SWITCH - AUDIBLE WARNING?
"NARON" XP-1C-1800S - VISUAL WARNING
- TEMP SENDER - HYDRAULIC TANK TEMP
"AUTOMETER" # 2252 - PRIMARY CIRCUIT TEMP
2-WIRE
- Low HYDRAULIC OIL WARNING - AUDIBLE WARNING?
LS 1900 - 2 WIRE - VISUAL WARNING?

- TRAVEL MODE (LEVELING) - AUDIBLE WARNING?
- VISUAL WARNING?

- JOYSTICK LEVER POSITION - FWD - NEUT - REVERSE?
- START ONLY IN NEUTRAL?
- BACK UP ALARM IN REVERSE

- GREENTRONICS - 12V SUPPLY 10A-15AMP

- MURPHY DISPLAY - ENGINE MONITOR - WATER TEMP, OIL P.S.I.,
ENGINE RPM, FUEL LEVEL, MPH
 - AIR HEAD RPM VIA ARMREST POT.
 - AIR KNIFE RPM VIA ARMREST POT
2-WIRE MAGNETIC PICK UP (# 71256-00)
"MAXIMA TECHNOLOGIES"
 - AIR KNIFE HAS 20 TOOTH "PULSE" PER 1 ROTATION
 - AIR HEAD HAS 18 TOOTH "PULSE" PER 1 ROTATION

- BRAKE PRESSURE SWITCH - USED AS AN INDICATION TO ALLOW
(XM-6C-200R/HRAT) FOR FORWARD OR REAR MOVEMENT OF
GROUND DRIVE PUMP, WIRED TO COIL
OF DTS'-6505-A (2.2A)

HI PRESS. FILTER WARNING 2 - GROUND DRIVE TANDEM
PARKER/ARLON PART NO. 806030002. TANDEM
DESC. COVER-ASSY EL 100-T 200/300 E
AUDIBLE / VISUAL ? 2 WIRE N.O. + GROUND

AIR HEAD RETURN FILTER WARNING - SCHROEDER RLT9VZ10S20MS10LC
AUDIBLE / VISUAL ? 2 WIRE N.O. + GROUND

JOYSTICK - ~~2~~ BUTTON POD ON LEFT SIDE, 6 TOGGLE IN FACE
MASTER ON/OFF
BOOM ON/OFF

"AUTO COULTER LIFT" - AUTO BY MEANS OF LIMIT SWITCH.
WHEN DIGGER BED IS RAISED AND LIMIT SWITCH CLOSES,
COULTER BLADE AUTOMATICALLY RAISES.

FUEL PUMP - WALBRO #FRB5-1

FUEL SENDER -

AIR HEAD CLEANER - TIMER

RCI CONTROL UNIT - CONTROLS REAR LIGHTS ? FLASHERS, TURN
SIGNAL ?