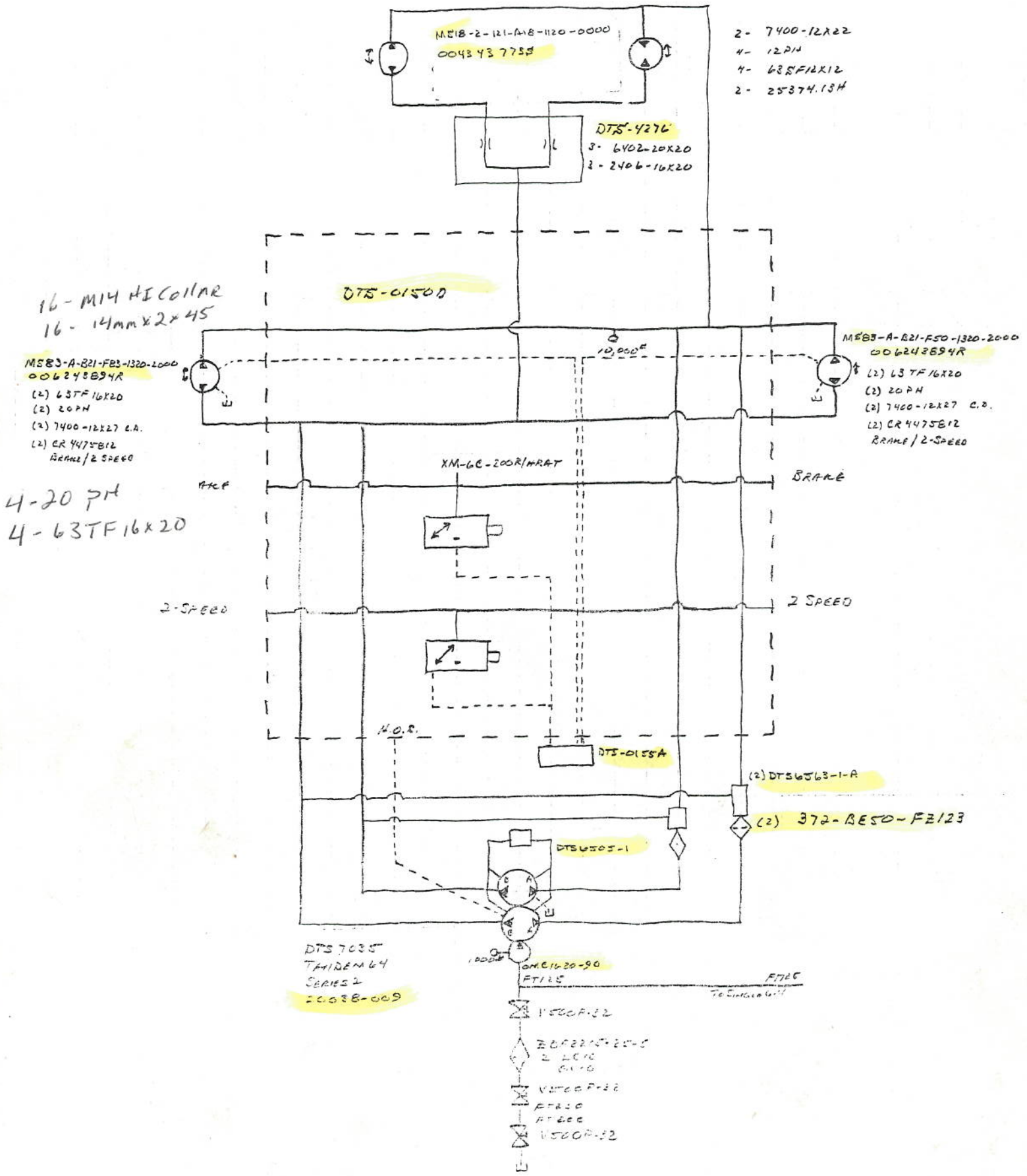


Parliament

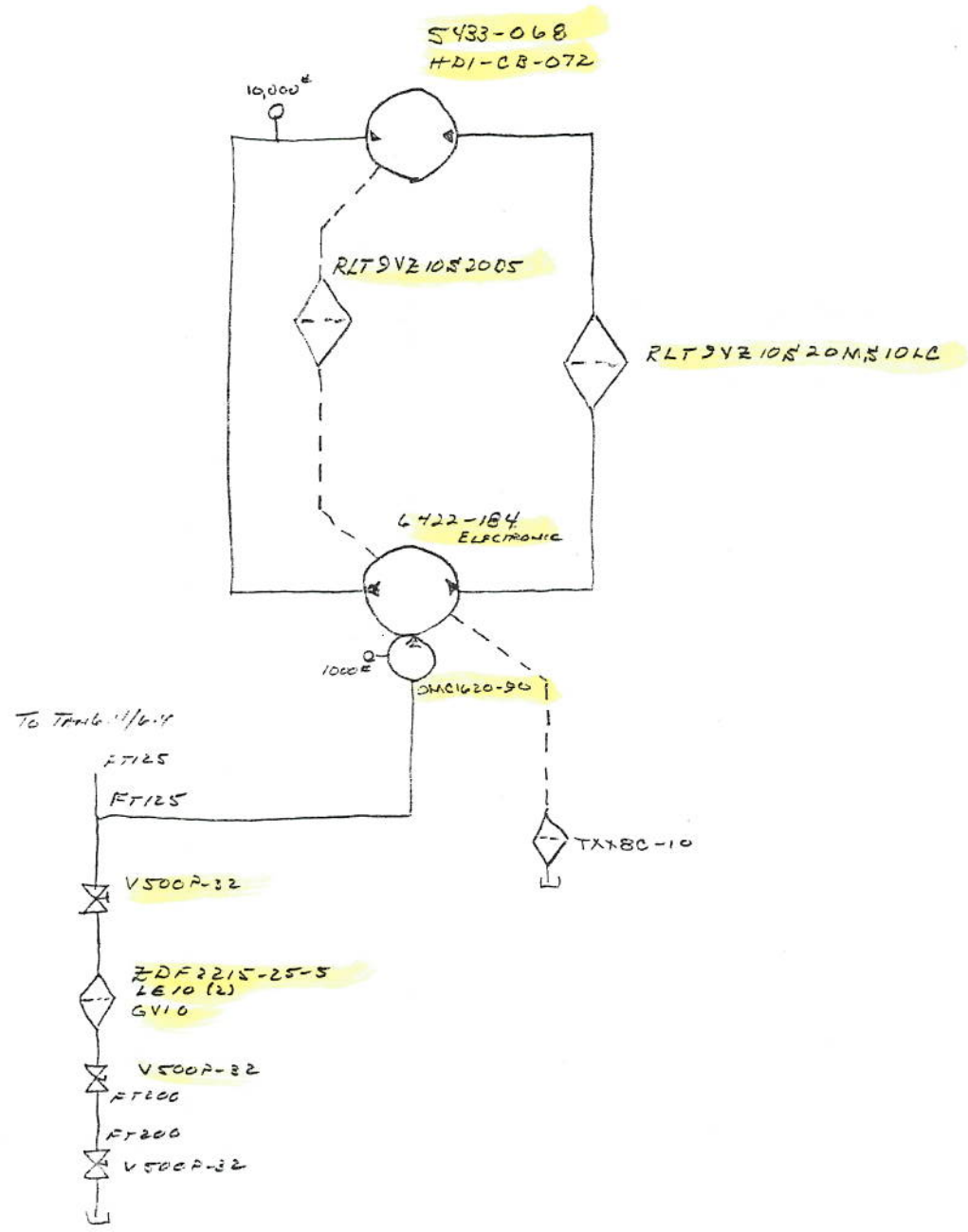
#07015

4RS9H $\frac{1}{65}$ AH - Bin

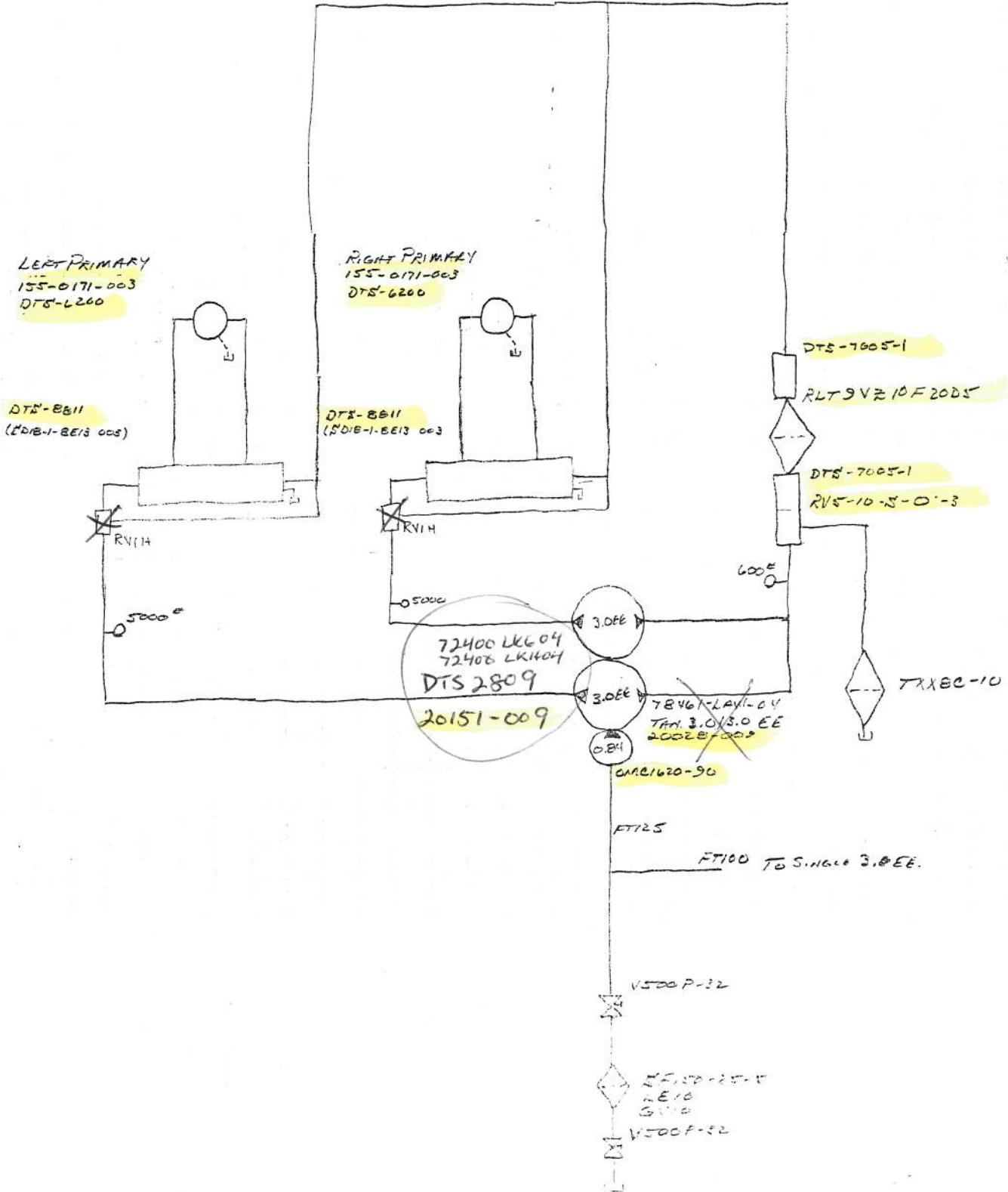
12/18/66
 #07015
 PARANORIT FARM
 4R5PH W/65" TANK



12/18/06
#07015
PRAIRIE FARMS
4504 W/65" - TRAK

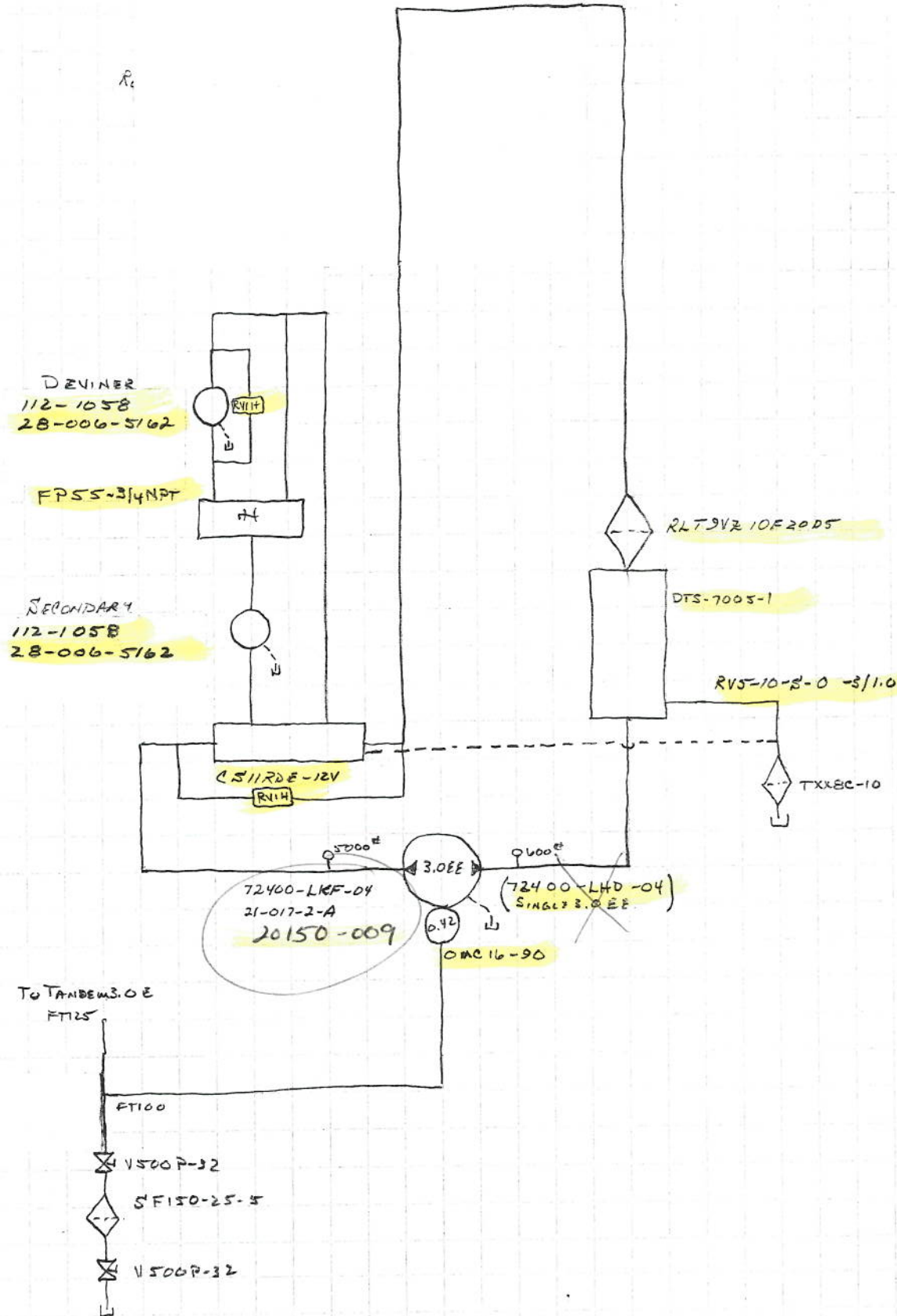


12/18/06
 E 07013
 PARAMOUNT FARMS
 4RSPH W/65" TRAIL



SECONDARY CIRCUIT

2/1/07
 207015
 PARAMOUNT FILTERS
 4RSPH/65-TANK-AFE TABLE-
 LEVELING



SIDE / CROSS CIRCUITS

12/18/06
#07015
PARAMOUNT FIRMS
4RSPH/65'-TRAIL

CROSS DISTRIBUTOR ROLLS
104-1067

CROSS STAIR ROLLS
104-1067

RDRS 112-30

CROSS
104-1067

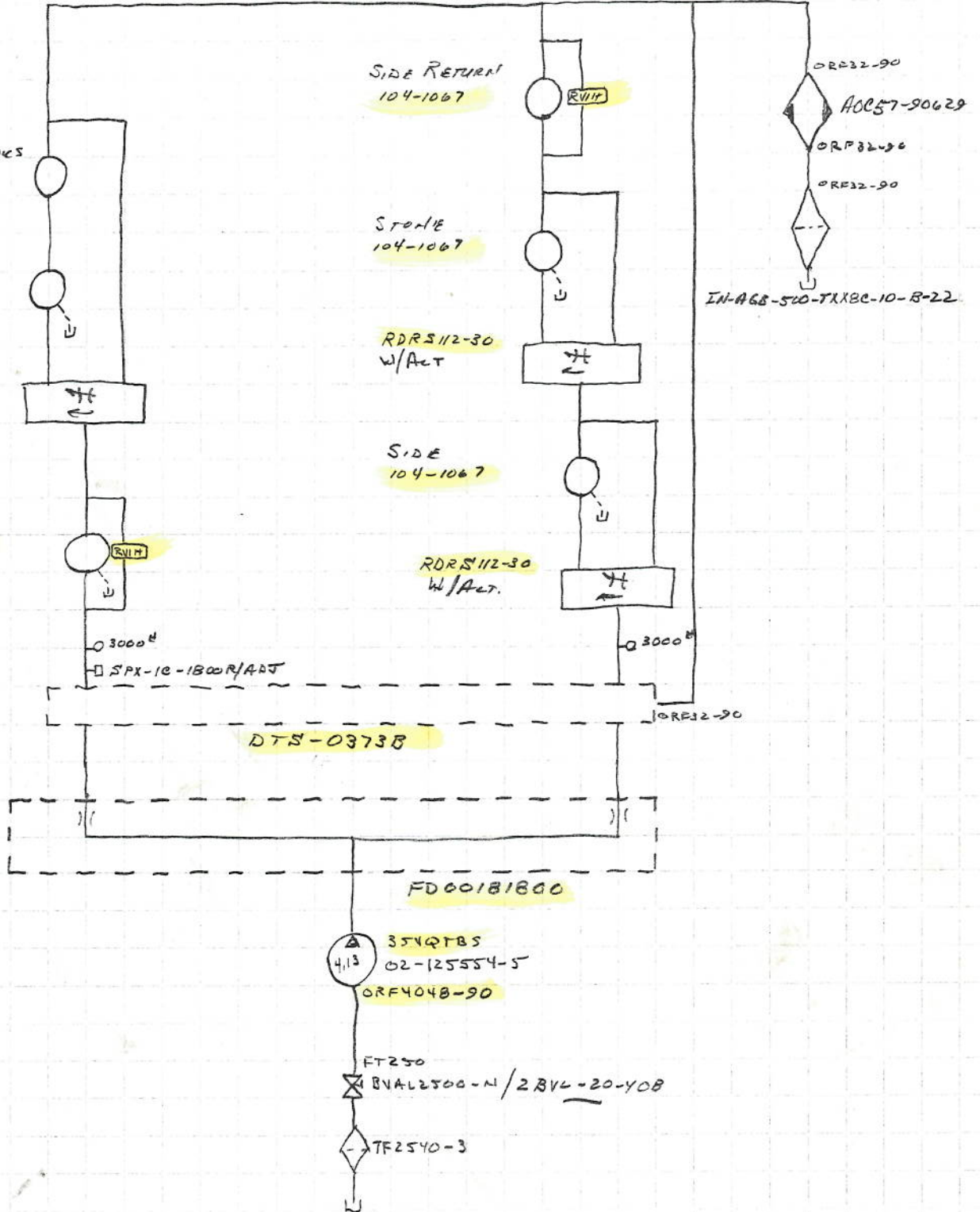
SIDE RETURN
104-1067

STONE
104-1067

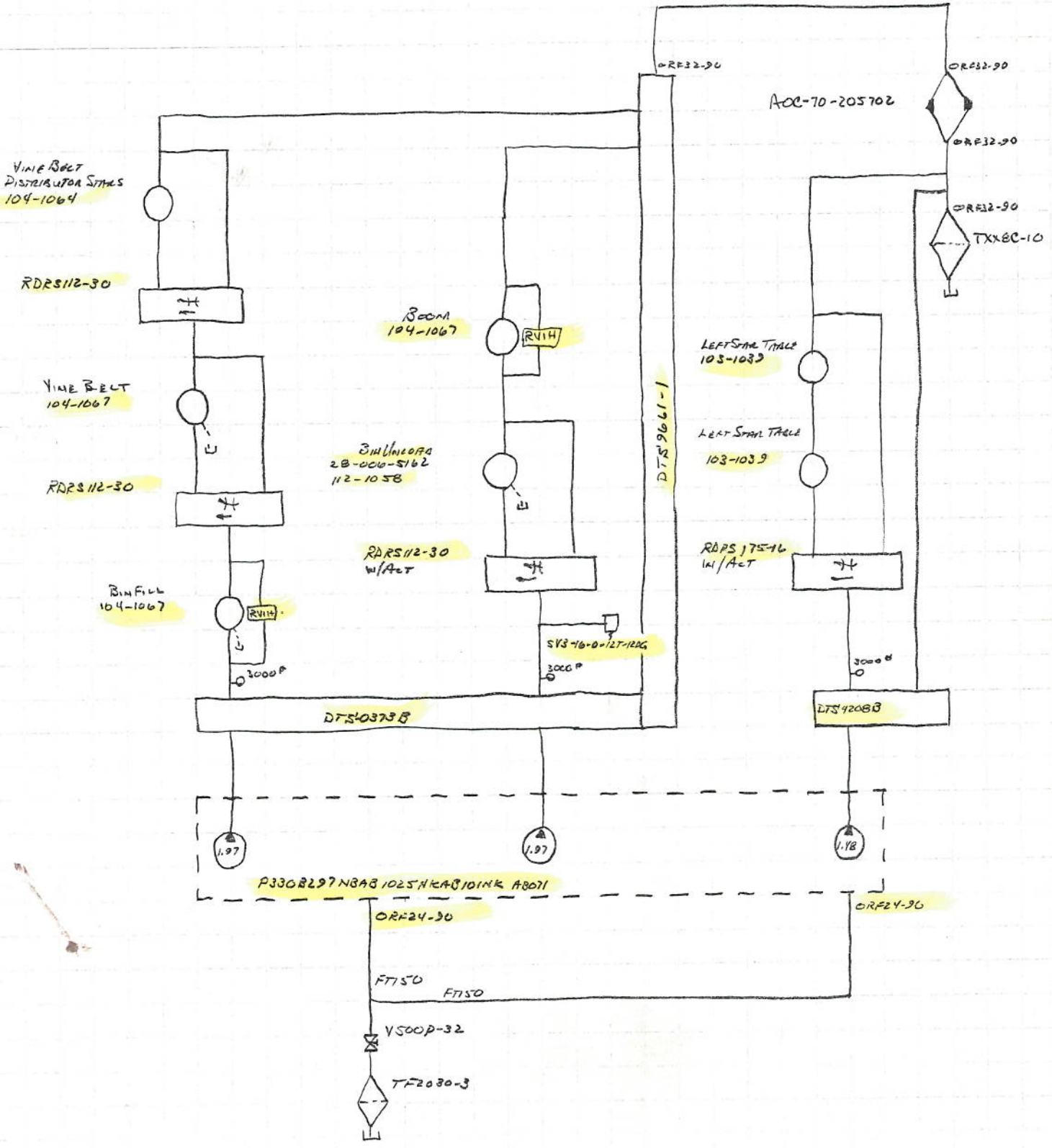
RDRS 112-30
w/ACT

SIDE
104-1067

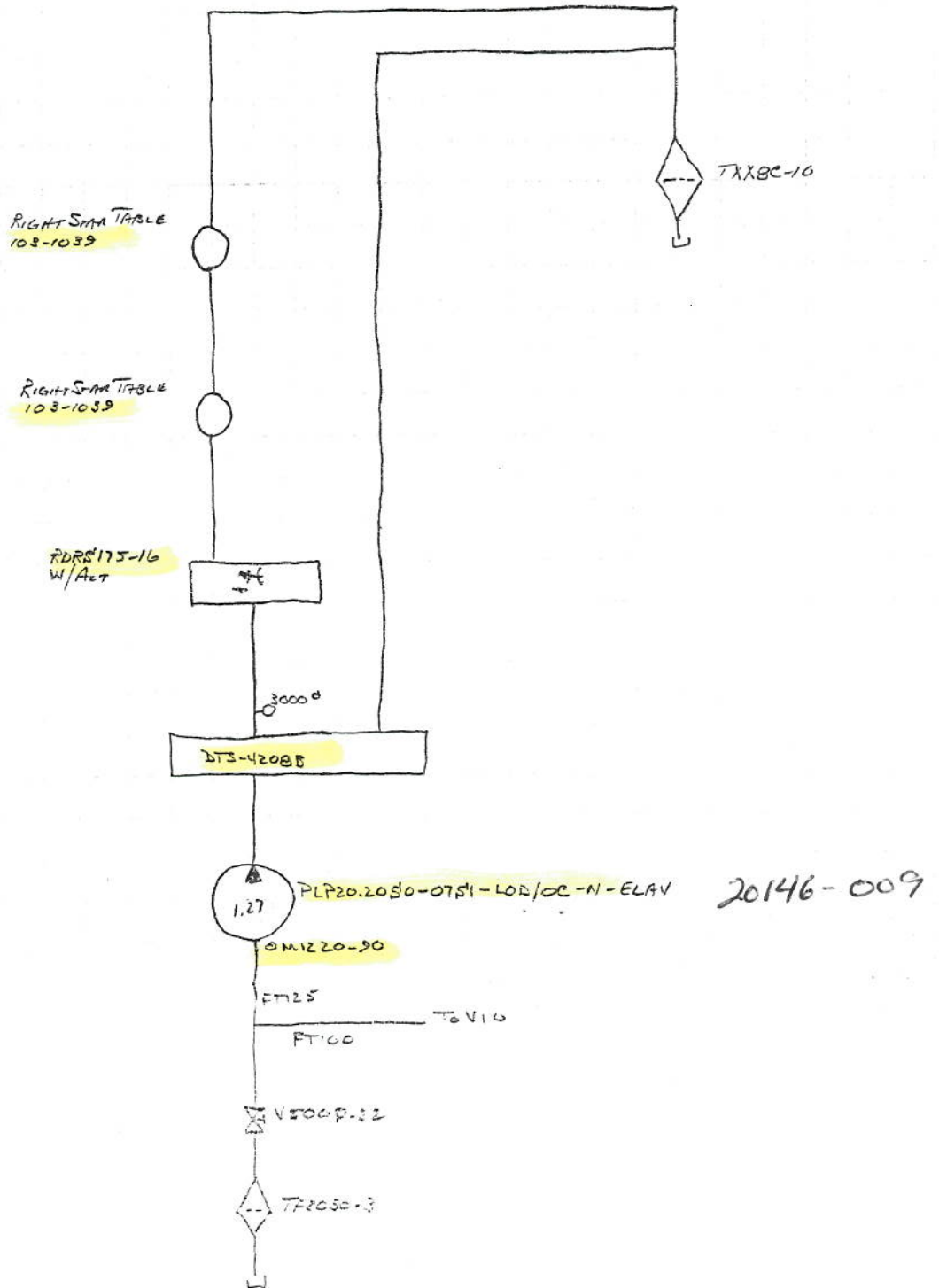
RDRS 112-30
w/ACT.



12/18/66
#67015
PARAMOUNT FARMS
4RSPH W/65"-TANK

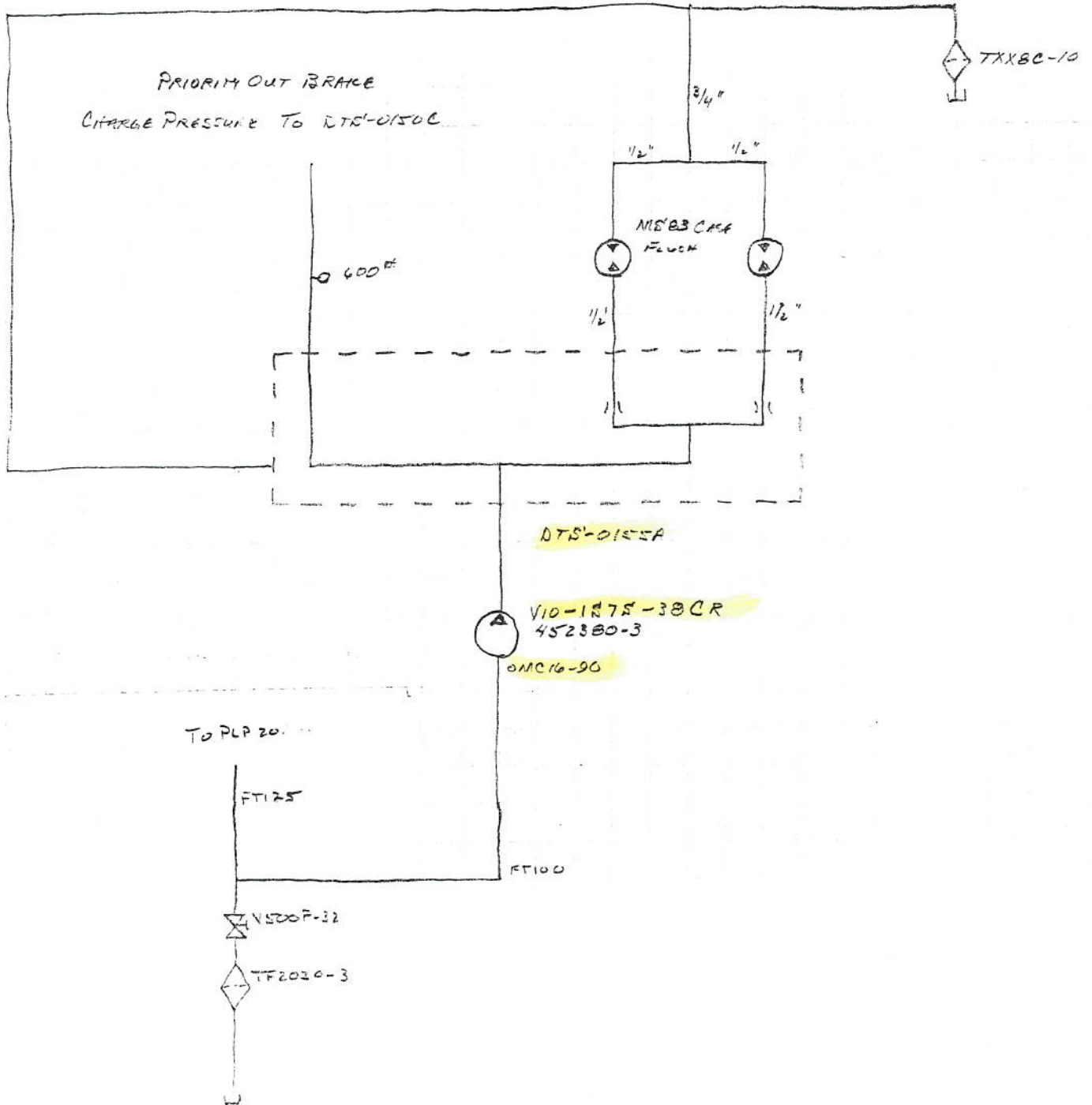


12/18/05
#07015
PARAMOUNT FARMS
4RSPH W/65"-TANK



BRAKE CHARGE PRESSURE / CASE FLUSHING

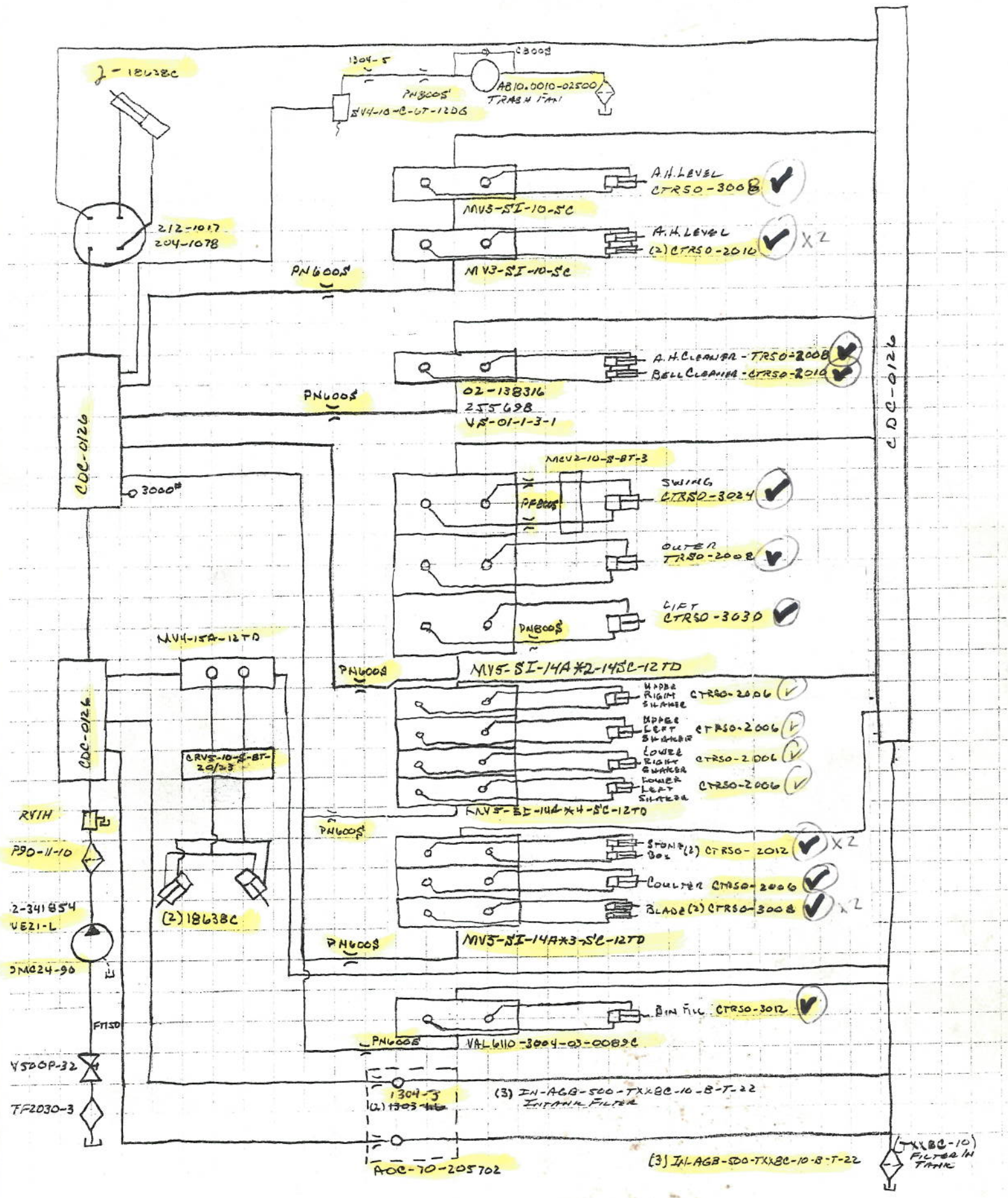
12/18/06
#07015
PARANMONT FARMS
4RSPT 11/65-TANK



4RSPH W/65" A.H.

PURCHASING FARM'S
4RSPH W/65" - TANK

STEERING-VALVE BANK CIRCUITS



CDC-0126

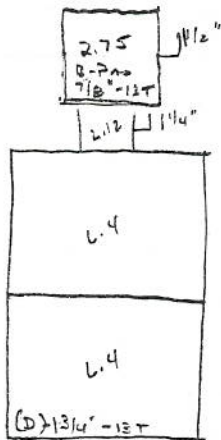
(2) XBC-10
FILTER IN
TANK

- ④
 TF2540-3
 2 1/2" CLS N/A
 28V/L20-40B
 FT250
 * 35VQTRS
- ③
 2" X 1/2" BUSH
 2" CLS N/A
 V500P-32
 FT200V
 FT200
 Y500P-32
 2" CLS N/A
 2" 90° STEEL
 W43-32PK
 20F2215-25-5
 W43-32PK
 2" 90° STEEL
 2" CLS N/A
 V500P-32
 2" CLS N/A
 2" TEE
 2" X 1 1/4" BUSH
 X FT125
 * T6.4/6.4 * L4EE

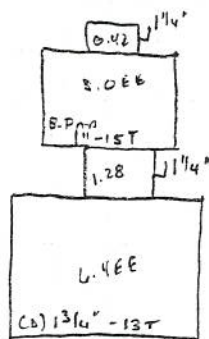
- ③
 TF2030-3
 2" CLS N/A
 V500P-32
 2" X 1 1/2" BUSH
 FT150
 * PVEZIL
- ③
 TF2030-3
 2" CLS N/A
 Y500P-32
 2" CLS N/A
 2" TEE
 X 2" X 1 1/2" BUSH
 FT150
 * TRIPLE COMMA,
 2" 90° STEEL
 O 2" X 1 1/2" BUSH
 FT150
 * TRIPLE COMMA

- ③
 TF2030-3
 2" CLS N/A
 V500P-32
 2" CLS N/A
 2" TEE
 X 2" X 1 1/4" BUSH
 FT125
 * PLP20.20
 O 2" 90° STEEL
 2" X 1" BUSH
 FT100
 * V10

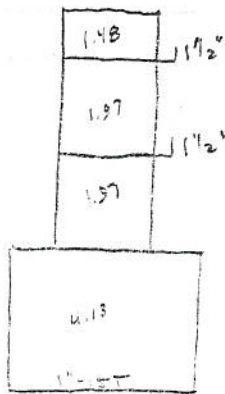
- ④
 4" X 2" BUSH
 2" CLS N/A
 V500P-32
 2" X 1 1/2" BUSH
 1 1/2" CLS N/A
 2" X 1 1/2" BUSH
 2" X 1 1/2" BUSH
 V500P-32
 2" CLS N/A
 2" TEE
 X 2" X 1 1/4" BUSH
 FT125
 * TANDAM B.OEE
 O 2" 90° STEEL
 2" X 1" BUSH
 FT100
 * SINGLE B.OEE



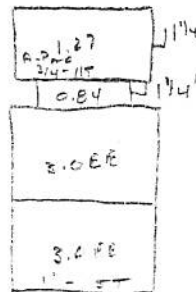
L.R. C-7 PAD



L.L. C-7 PAD



T.R. C-7 PAD



T.L. C-7 PAD

L.R. TRANSFORM L.4

PVEZIL

L.L. L.4EE

3.0EE

T.R. 35VQTRS

TRIPLE COMMA LINE

T.L. TRANSFORM 3.0.

PLP20.20

ENGINE V10

GROUND DRIVE

STEERING CIRCUIT

AIR BRAKE

SECONDARY

CROSS

SIDE

BIN FILL

BIN UNLOAD

LEFT START TABLE

LEFT PRIMARY

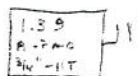
RIGHT PRIMARY

RIGHT START TABLE

BRAKE CHARGE PRESSURE

GAR PRODUCTS 2P49 GAR BOX

121 I

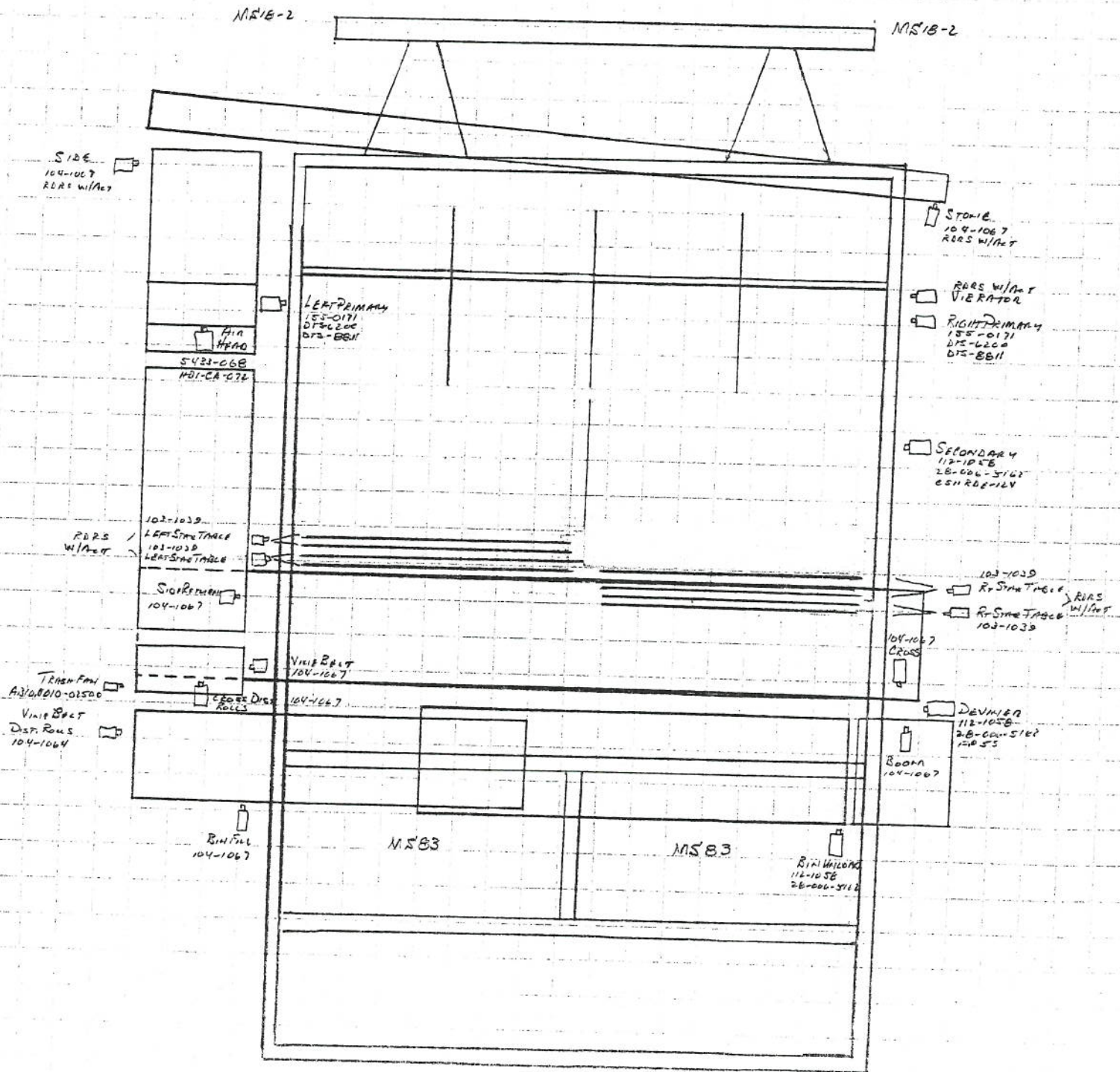


ENGINE

OM 12-20 90

OM 16-90

12/12/06
EC7015
PARAMOUNT FARMS
4RSH W/LS-TATHE



Qty.	Parts Number	Description	Date Needed _____
5	30027-019	RDRS w/ Act Mount	
VII	30009-019	RDRS mount	
1	30028-019	REV. VALVE	
2	40001-019	VALVE BANK ASSY	
1		STEERING BOX ASSY	
2		BRE 82F	
1	848 FS 16x12		
1	848 FS 12x12		
2	Z634A 12x12		
110	30001-014	LIGHT BRKT	
2	30010-022	LONG HE PRESS FILTER BRKT	
1	31001-019	FLOW DIVIDER BRKT	
1	30034-019	MV4 BRKT	
1	30040-019	MCV 2 BRKT	
1	30021-019	4 BK BRKT	
1	30012-019	CRVS BRKT	
2	31015-019	A.H. CLEANER BRKT	
1	30031-019	FUEL Pump BRKT	
1	30024-014	FUEL FILTER BRKT	
1	30004-019	150 BRKT	
1	30024-019	4276 BRKT	
1	30029-019	SV4 BRKT	

Detail List

Part#	Description	Qty
100037	3/8" Steel Line Clamp	XXXXXX
100050	1/2" Steel Line Clamp	X [✓] XXXX
100062	5/8" Steel Line Clamp	XXX XX
100087	7/8" Steel Line Clamp	XXXXX XXXXXX XXXX ✓
100100	1" Steel Line Clamp	XXX X
100125	1 1/4" Steel Line Clamp	
100150	1 1/2" Steel Line Clamp	
100200	2" Steel Line Clamp	
100225	2 1/4" Steel Line Clamp	
100250	2 1/2" Steel Line Clamp	
ABAX1000-06	Straight Tube Adapter to JIC Male #6	
ABAX1000-08	Straight Tube Adapter to JIC Male #8	
ABAX1000-10	Straight Tube Adapter to JIC Male #10	
ABAX1000-14-12	Strght Tube Adptr to JIC Male #14-12	X
ABAX1000-16	Straight Tube Adapter to JIC Male #16	
BA19-06	3/8" Replacement Sleeve	
BA19-08	1/2" Replacement Sleeve	
BA19-10	5/8" Replacement Sleeve	
BA19-14	7/8" Replacement Sleeve	
BA19-16	1" Replacement Sleeve	
BAX1100 06	3/8" NPT Female x 3/8" Tube	
BAX1100 08	1/2" NPT Female x 5/8" Tube	
BAX1100 10	1/2" NPT Female x 5/8" Tube	
BAX1100 14	3/4" NPT Female x 7/8" Tube	
BAX1200 06	3/8" Tube Union	
BAX1200 08	1/2" Tube Union	
BAX1200 10	5/8" Tube Union	
BAX1200 14	7/8" Tube Union	
BAX1200 16	1" Tube Union	
BAX3100 06	3/8" NPT x 3/8" Tube Tee	
BAX3100 08	1/2" NPT x 1/2" Tube Tee	
BAX3100 10	1/2" NPT x 5/8" Tube Tee	
BAX3100 14	3/4" NPT x 7/8" Tube Tee	
BAX3100 16	1" NPT x 1" Tube Tee	
BAX3200 08	1/2" Tube Tee	
BAX3200 14	7/8" Tube Tee	
BAX3200 16	1" Tube Tee	



THE YOST SUPERIOR Co.

300 S. CENTER ST. • P.O. BOX 1487
SPRINGFIELD, OHIO 45501

PHONE (937) 323-7591
FAX (937) 323-5180
sales@yostsuperior.com

PARAMOUNTS

30009-019-11

40008-019-1111

30077-019-11

30028-019-11

30007-003-11111

30021-019-1

30002-019-1

30012-019-1

30034-019-1

30040-019-1

30069-019-1

30031-019-1

30068-019-11

30057-019-1

30015-019-11

40001-019-11

31001-019-1

30029-019-1

30004-019-1

30024-019-1

"The Clear Choice" for precision springs & wire forms

COILED
WIRE

WIRE
FORM

SPRINGS
SPECIALTIES





THE YOST SUPERIOR Co.

300 S. CENTER ST. • P.O. BOX 1487
SPRINGFIELD, OHIO 45501

PHONE (937) 323-7591
FAX (937) 323-5180
sales@yostsuperior.com

1 - 30073-019
1 - 30074-019
1 - 30081-019

"The Clear Choice" for precision springs & wire forms

COILED WIRE SPRINGS
WIRE FORM SPECIALTIES



Steel Line, Conduit, and Hydrazorb

HYDTB06 3/8"Steel	HYDTB08 1/2"Steel	HYDTB10 5/8"Steel	HYDTB14 7/8"Steel	HYDTB14H Heavy 7/8"	HYDTB16 1"Steel	113120 Hydrazorb	EMT050 1/2"Conduit	EMT075 3/4"Conduit
74	240	240	240	240	240	240	120	120
72	240	240	240	1240	240	240	120	120
54	240	240	240		240	240	120	120
72	240	240	240		240	240	120	120
72	110	100	104			120	120	120
160	78		100			18	120	120
46	72		240 1/2			10	120	120
46	70		1/2				120	120
87	150		240 1/2				120	120
88	160		1/2				60	120
80	160		170					120
120	100		120					120
120	240		8					120
120	240		240					120
120	240		240					120
157	75		240					120
	75		240					120
			240					
			240					
			240					
			240					
			240					
			240					
			240					
			140					
			106					
			240					
			92					

Detail List

Part#	Description	Qty
100037	3/8" Steel Line Clamp	XXXXXXXX
100050	1/2" Steel Line Clamp	XXXXXX
100062	5/8" Steel Line Clamp	XXX
100087	7/8" Steel Line Clamp	XXXXXXXXXX
100100	1" Steel Line Clamp	XXXXX
100125	1 1/4" Steel Line Clamp	
100150	1 1/2" Steel Line Clamp	
100200	2" Steel Line Clamp	
100225	2 1/4" Steel Line Clamp	
100250	2 1/2" Steel Line Clamp	
ABAX1000-06	Straight Tube Adapter to JIC Male #6	
ABAX1000-08	Straight Tube Adapter to JIC Male #8	
ABAX1000-10	Straight Tube Adapter to JIC Male #10	
ABAX1000-14-12	Strght Tube Adptr to JIC Male #14-12	
ABAX1000-16	Straight Tube Adapter to JIC Male #16	
BA19-06	3/8" Replacement Sleeve	
BA19-08	1/2" Replacement Sleeve	
BA19-10	5/8" Replacement Sleeve	
BA19-14	7/8" Replacement Sleeve	
BA19-16	1" Replacement Sleeve	
BAX1100 06	3/8" NPT Female x 3/8" Tube	
BAX1100 08	1/2" NPT Female x 5/8" Tube	
BAX1100 10	1/2" NPT Female x 5/8" Tube	
BAX1100 14	3/4" NPT Female x 7/8" Tube	
BAX1200 06	3/8" Tube Union	
BAX1200 08	1/2" Tube Union	
BAX1200 10	5/8" Tube Union	
BAX1200 14	7/8" Tube Union	
BAX1200 16	1" Tube Union	
BAX3100 06	3/8" NPT x 3/8" Tube Tee	
BAX3100 08	1/2" NPT x 1/2" Tube Tee	
BAX3100 10	1/2" NPT x 5/8" Tube Tee	
BAX3100 14	3/4" NPT x 7/8" Tube Tee	
BAX3100 16	1" NPT x 1" Tube Tee	
BAX3200 08	1/2" Tube Tee	
BAX3200 14	7/8" Tube Tee	
BAX3200 16	1" Tube Tee	

Detail Dept Fittings List

New #	Part #	Description	Quantity
319-06	840FS-06	JIC Tube Sleeve	
319-08	840FS-08	JIC Tube Sleeve	
319-10	840FS-10	JIC Tube Sleeve	
319-14	840FS-14	JIC Tube Sleeve	
319-16	840FS-16	JIC Tube Sleeve	
318-06	841FS-06	JIC Tube Nut	
318-08	841FS-08	JIC Tube Nut	
318-10	841FS-10	JIC Tube Nut	
318-14	841FS-14	JIC Tube Nut	
318-16	841FS-16	JIC Tube Nut	
2403-06	842FS-06	Male JIC x Male JIC	
2403-08	842FS-08	Male JIC x Male JIC	
2403-08-06	842FS-08-06	Male JIC x Male JIC	
2403-10-08	842FS-10-08	Male JIC x Male JIC	
2403-14	842FS-14	Male JIC x Male JIC	
2403-14-12	842FS-14-12	Male JIC x Male JIC	
2403-16	842FS-16	Male JIC x Male JIC	
2403-16-12	842FS-16-12	Male JIC x Male JIC	
2603-06	844FS-06	Male JIC Tee	
2603-08	844FS-08	Male JIC Tee	
2603-08-08-06	844FS-08-08-06	Male JIC Tee	
2603-14	844FS-14	Male JIC Tee	
2603-16-16-16	844FS-16-16-16	Male JIC Tee	
2406-12-16	883FS-12-16	Female JIC x Male JIC Rdcr	
2406-14-12	883FS-14-12	Female JIC x Male JIC Rdcr	

HYDRAULICS FINISH MATERIALS LIST

BEGINNING DATE
END DATE

PROJECT NO.

QTY	PART NUMBER	DESCRIPTION
1		704-1059 DRAIN PLUG
1	20041-006	660-1524 3/4 NIPPLE
1	20039-006	660-1508 5/8 NIPPLE
5	2017-03012	3/4 GAS BALL VALVE (PEASLEYS)
2	20064-001	BATTERY
4	20062-001	BATTERY NUTS
1		6x7 90° Boot
1		MUFFLER
8 1/2	22037-023	5" FLEX PIPE
1	22011-023	7" PRECLEANER
1		705-1544 CLAMP (AIR INTAKE)
3 FT		1" HEATER HOSE
2	20038-006	505-1216 CLAMP
2		705-1026 CLAMP
2	20036-006	505-1210 CLAMP
2		705-1013 CLAMP
6	20075-006	BRES2F
1	30021-014	30021-014 THROTTLE BRKT
1	30041-019	THROTTLE EXTENSION
1	30022-900	1/2" BORE FALK COUPLER
1	20003-020	1 1/4 BORE FALK COUPLER
1	20004-020	FLEX ELEMENT FALK
1	20005-020	NYLON COVER RING FALK
1	22031-023	A/C REC-DRYER
1	20050-006	A/C HOSE KIT
1	22030-023	A/C CONDENSER
4	30054-013	3/4" FLAT DIGGER BLADE
4	30025-013	CENTER POINT
4		DSR 2460 COULTER BLADE
4	31011-007	COULTER CAP PROTECTOR

1-24
3

HYDRAULICS FINISH MATERIALS LIST

BEGINNING DATE
END DATE

PROJECT NO.

QTY	PART NUMBER	DESCRIPTION
1		STEERING BOX ASSY (REAR AXLE)
2		BRE-82F (STEERING BOX)
1	2015-011	3123 FUEL FILTER
1	2015-033	4309 FILTER HEAD
1	20039-001	6065W FUEL PUMP
2	20035-006	505-1206 CLAMP
12 1/2"	1/4-28 ALL THREAD	
2	1/4-28 HEX NUT	
1		733-5775 5" MUFF CLAMP
2	22010-023	733-3225 5" TORX TITE
8"		5" MUFFLER PIPE
1	2800LC	ALTERNATOR
6 SQ FT		2" WHITE FOAM
6 SQ FT	20124-006	1/2" TREATED PLUMWOOD
2	20239-001	WAYTEK DISCONNECT
2	20296-001	WAYTEK DISCONNECT COVER PLATE
2	20259-001	HEAT SHRINK - RED 12"
2	20260-001	HEAT SHRINK - BLACK 12"
9	20263-001	3/8" EYE
7	20264-001	1/2" EYE
21 FT	20262-001	2/0 CABLE
16	20261-001	728125 SOLDER PELLET
20'	20033-006	5/8" HEATER HOSE
20'	20032-006	3/4" HEATER HOSE
8 QT		80W90 OIL
38 QT	2036-0003	15W40 OIL
1	2021-23240	20' CONTROL CABLE
1	2021-23258	21 1/2' CONTROL CABLE
1		5" 90° MUFFLER ELBOW
1		RADIATOR SCREEN - (PEASLEY'S)

