

#11044 #

Hearstland Farms

4RSPH W65" AH

ADVANCED FARM EQUIPMENT

**BIN LEVELING  
MD3/XA2**

PLUG #1  
PIN NO.

JUNCTION  
BLOCK NO.

1	ORANGE	72	9	BIN MANUAL UP	C2:9 MD3
2	BLUE	71	10	BIN MANUAL DOWN	C2:10 MD3
3	WHITE	41	11	TRAVEL MODE	C2:11 MD3
4	BLACK (BELDEN 9418)		12	BIN LEVEL CONTROL % PIN "A"	C1:4 XA2
5	WHITE (BELDEN 9418)		12	BIN LEVEL CONTROL % PIN "A"	C1:4 XA2
6	RED (BELDEN 9418)		16	BIN LEVEL CONTROL % PIN "B"	C1:18 XA2
7	GREEN (BELDEN 9418)		19	BIN LEVEL CONTROL % PIN "B"	C1:32 XA2
8	WHITE	371	13	LEVEL WARNING	C1:8 XA2
9					
10					
11	BLACK	15	15	PANEL GROUND	C1:15 XA2
12	RED	28	18	12VDC POWER SUPPLY	C1:28 XA2

PLUG #2  
PIN NO.

1	BLUE (SENSOR)		1	BANNER SENSOR GROUND	C1:1 MD3
2	WHITE (SENSOR)		14	BANNER SENSOR "SIGNAL IN"	C1:10 XA2
3	BROWN (SENSOR)		21	12VDC POWER SUPPLY	C2:4 MD3
4	RED	75	21	12VDC POWER SUPPLY	C2:4 MD3
5	RED	280	3	REAL TIME CLOCK POWER SUPPLY	C1:7 MD3
6					
7					
8					
9					
10					
11					
12					

ADVANCED FARM EQUIPMENT

#11044

HEARTLAND FARMS

4RSPH65LAH

12/7/2010

30A 15	20A 14	30A 13	30A 12	30A 11	20A 10	30A 9	30A 8	30A 7	30A 6	30A 5	20A 4	30A 3	30A 2	30A 1
LT. REAR LIGHT	FOOT PED.	A/C	ACTS [ WHITE	BACK UP LTS. SWT.	FUEL [ RED	CAB FIELD LIGHTS	CAB O.H. [ RED	CYL'S [ ORANGE	RADIO [ RED	MAIN POWER	BRAKE [ BLACK	MAIN POWER	AH CLEAN BIN FILL	HAZ. STAT [ YELLOW
RELAY [ 52 (1)	[ BLACK ENGINE		[ 85 (1)	[ BROWN [ 88 (1)	[ 081 (1)	RELAY [ BROWN	[ 22 (3)	[ 143 (2)	[ 12 (3)	RELAY [ YELLOW (H)	DTS-0160	[ ORANGE (H)	[ 91 (1)	[ BROWN
	FAN REV. [ RED 2			BACKUP LITE RELAY		OUTLET [ BLACK	[ 0012 (7)	[ 18 (3)	[ RED DELAY	[ RED RELAY	WARNING [ GRD DRV.		CYBER TECH [ GREEN	
				[ BROWN BACKUP		POWER [ RED	[ 156 (3)	GA PANEL [ RED	VIEW [ PURPLE		BLUE 8 [ AH FAN		[ GREEN [ 091 (4)	
				WARNING [ BROWN		VIEW [ RED	[ 022 (3)				YELLOW 10 [ HYD LEVEL			
				[ 088 (1)										
<b>HAZ. STAT</b>			<b>TURN STAT</b>			<b>DTS-0160</b>								
[ CB1-YELLOW			[ CB1-BROWN		[ GREEN 607 (2)	SIGNAL			BLACK ]			[ CROSS XP		
_YELLOW 92 (1)			_BROWN 502 (5)		[ CB 4 - RED	12V DC			BROWN ]			BLACK 60		
					[ GREEN	GROUND			BLUE ]					

**R E L A Y S**

	4X4 LOCK RELAY	4X4 RELAY	START RELAY	MAIN POWER RESET RELAY	RIGHT REAR LIGHT RELAY	RIGHT FRONT LIGHT RELAY	LEFT REAR LIGHT RELAY	LEFT FRONT LIGHT RELAY	A.H. CLEAN. TIMER	GROUND WIRES
85 GRD.	85 GRD.	85 GRD.	85 GRD.	85 TIME DELAY RELAY TERM-1	85 GRD.	85 GRD.	85 GRD.	85 GRD.	8 - BLUE 26 15 (1)	BLACK 015 (CANTRAC)
86	86 BLACK 1	86 BLACK 1	86 ORANGE 144 (2)	86 RESET RELAY TERM-6	86 BLACK 1	86 ORANGE 144 (2)	86 BROWN 505 (2)	86 BROWN 505 (2)	9 - WHITE 27 14 (1)	BLACK 20 - 4(3) (CAB)
87	87 BLACK 1	87 BLACK 1	87 BLACK 1	87 CB3 ORANGE (H)	87 BLACK 1	87 GREEN 422 (3)	87 CB16 - BLUE	87 CB18 - BLUE	10/11 - PURPLE 28 13 (1)	BLACK 0015 (CGIM)
30	30 BLACK 01 (2)	30 BLACK 01 (2)	30 BLACK 01 (2)	30 ORANGE (H) 90 (7)	30 BLACK 01 (2)	30 WHITE 104 (5)	30 BLUE 36	30 BLUE 360	6/2 - GROUND	BLACK 020 (4) (CYBER)
<b>BACK UP LTS. RELAY</b>										BLACK 0020 (KARTECH)
85 GRD.										BLACK 15 (MD3 / XA2)
86 BROWN 06 (2)										WHITE 31 (A.H.)
87 CB11 - BROWN										PANEL GROUND
30 BROWN 6										
<b>LEFT ROW LIGHT RELAY</b>										
85 GRD.										
86 BROWN 057 (1)										
87 CB10 - BROWN										
30 BROWN 57										
<b>CAB FIELD LIGHT REALY</b>										
85 GRD.										
86 BROWN 504 (3)										
87 CB9 - BROWN										
30 BLACK (H) 507 (3)										
<b>CAB ROAD LIGHTS RELAY</b>										
85 GRD.										
86 BROWN 503 (3)										
87 CB17 - BROWN										
30 BLACK (H) 526 (3)										

ADVANCED FARM EQUIPMENT

**MACHINE SERIAL NUMBERS**

**MODEL:** 4RSPH-65LAH  
**SERIAL NUMBER:** 11044

**ENGINE:**

**ENGINE NUMBER:** 79423522  
**DATE OF MFG.:** 04/10  
**MODEL:** QSX15  
**REFERENCE NUMBER:** TRELAN QSX15 450 HP  
**CPL:** 3088

**ENGINE ECU CONTROLLER**

**PART NUMBER:** 3408501  
**SERIAL NUMBER:** 34010208

**WHEEL MOTOR SERIAL NUMBERS**

**FRONT DRIVE**

**MODEL:** MS18-2-121-A18-0000  
**PART NUMBER:** 004343773S REV.10313  
**SERIE NUMBER:** PID0082102001J

**REAR DRIVE**

**MODEL:** MS18-2-121-A18-0000  
**PART NUMBER:** 004343773S REV.09097  
**SERIE NUMBER:** PID0063738001J

**MODEL:** MS83-A-B21-F83-1320-25CJM  
**PART NUMBER:** A30479E  
**SERIE NUMBER:** F00150055001  
**VERS:** J

**MODEL:** MS83-A-B21-F83-1320-25CJM  
**PART NUMBER:** A30479E  
**SERIE NUMBER:** F00150055002  
**VERS:** J

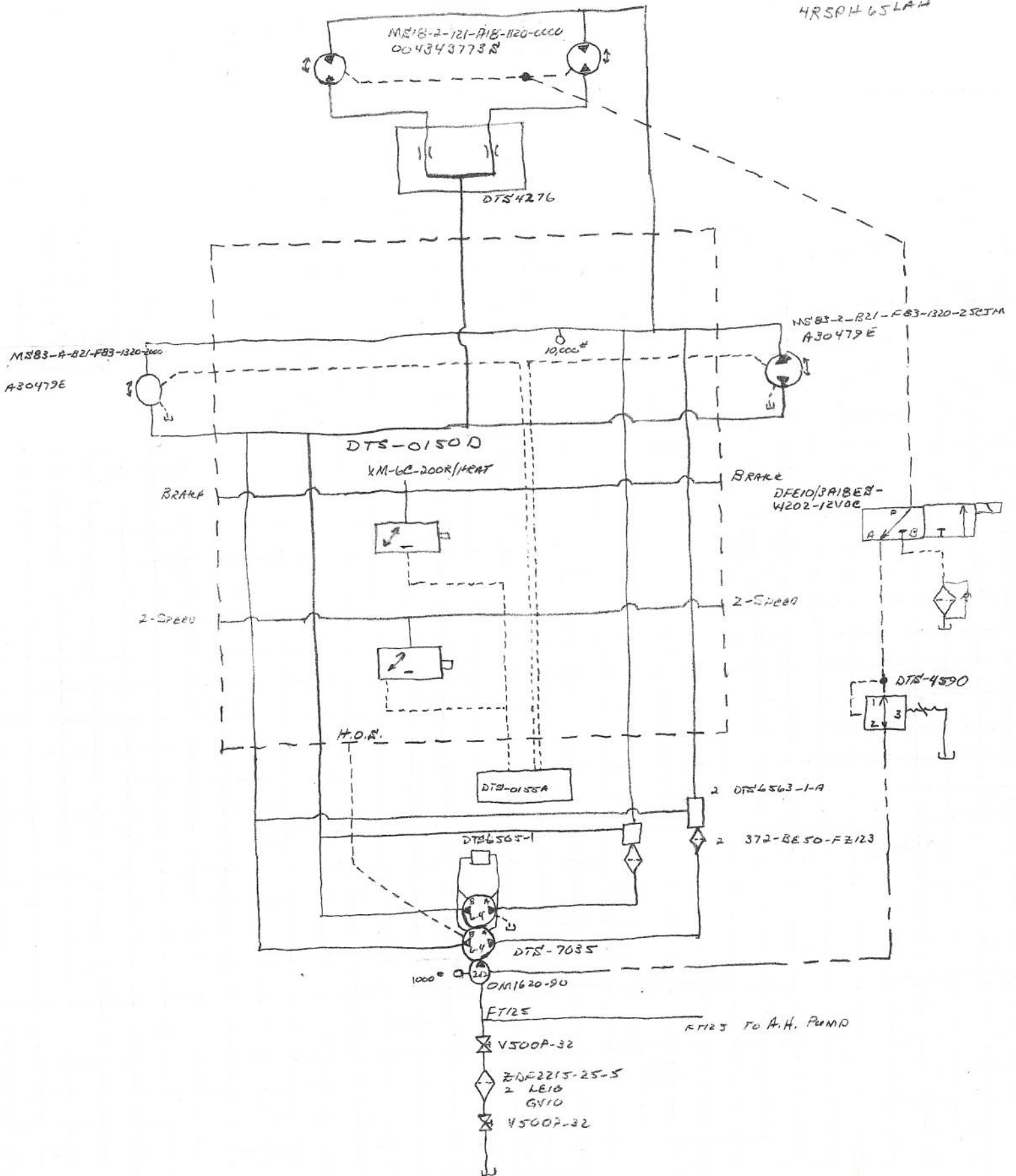
**GEARBOX SERIAL NUMBER**

**MODEL NUMBER:** D13387  
**SERIAL NO.** 037844

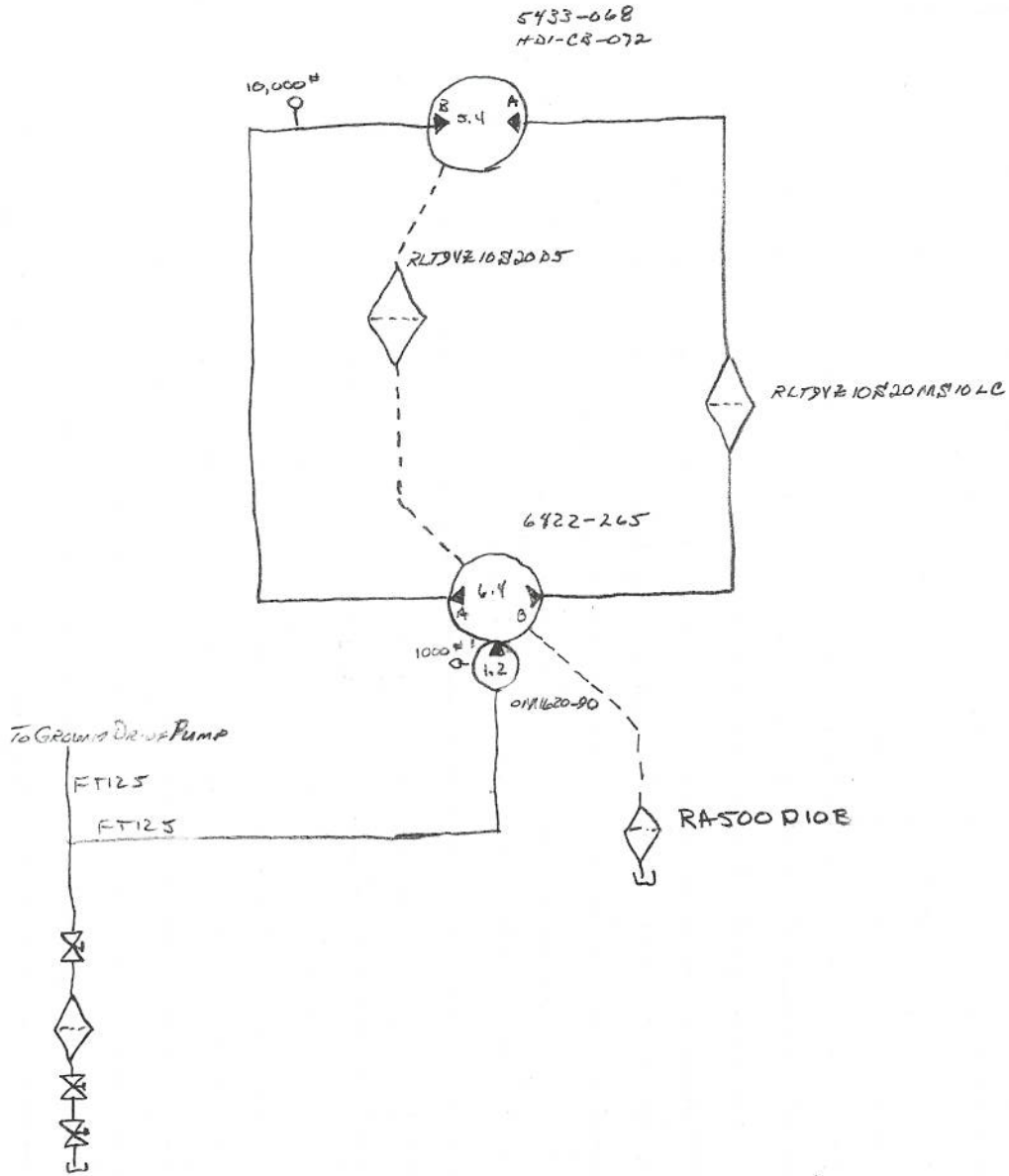
**J.D. CAB**

**S/N:** 0031  
**PART NUMBER:** AH214113

11/8/10  
 #11044  
 HEARTLAND FARMS  
 4R50H65LAW

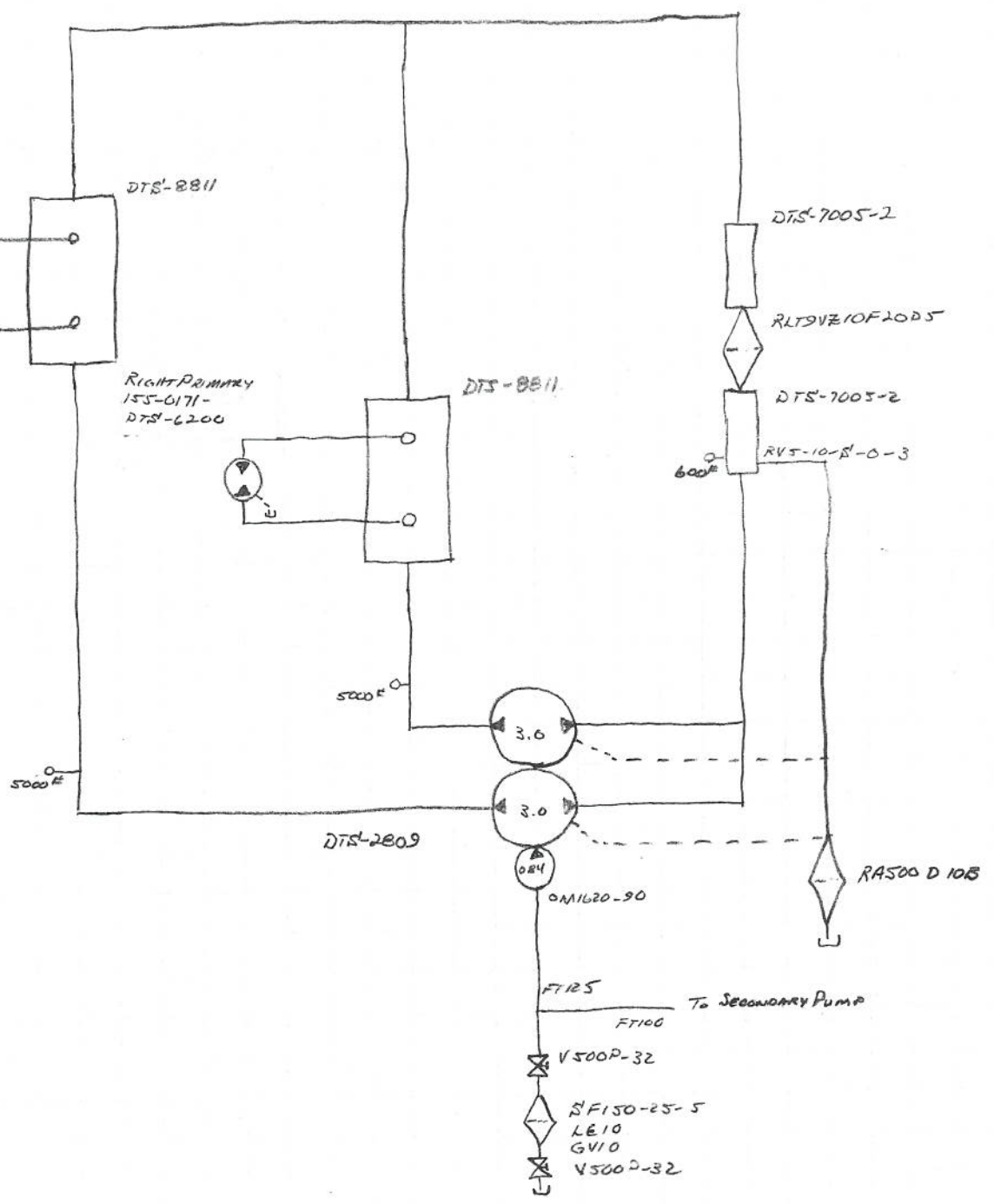


11/8/10  
#11044  
HEARTLAND FARMS  
HRSAM65L4H



11/8/10  
E11044  
HEARTLAND FARMS  
HRSBHLSLAM

LEFT PRIMARY  
155-0171-  
DTS-6200



DTS-8811

RIGHT PRIMARY  
155-0171-  
DTS-6200

DTS-8811

DTS-7005-2

RLTSVZ10F20D5

DTS-7005-2

RV5-10-B-0-3

DTS-2809

3.6

3.0

DMS 084  
0M1620-90

RA500 D 10B

FT125  
To Secondary Pump  
FT100

V500P-32  
SF150-25-5  
LE10  
GV10  
V500P-32

5000# 0

5000# 0

600# 0

11/9/10  
#11044  
HEARTLAND FARMS  
4RSP#65L4H

DEVINER  
112-1058  
28-006-5762

FPSS-314MPT

SECONDARY  
112-1059  
28-006-5762

C311R06-12V  
RVH

5000'

72400-LKF-04

3.0

0.82  
0M16-90

RLT9VZ10F20DS

DTS-7005-2

RVS-10-510-3  
600'

RA500 010B

TO PRIMARY PUMP

FT125

FT100

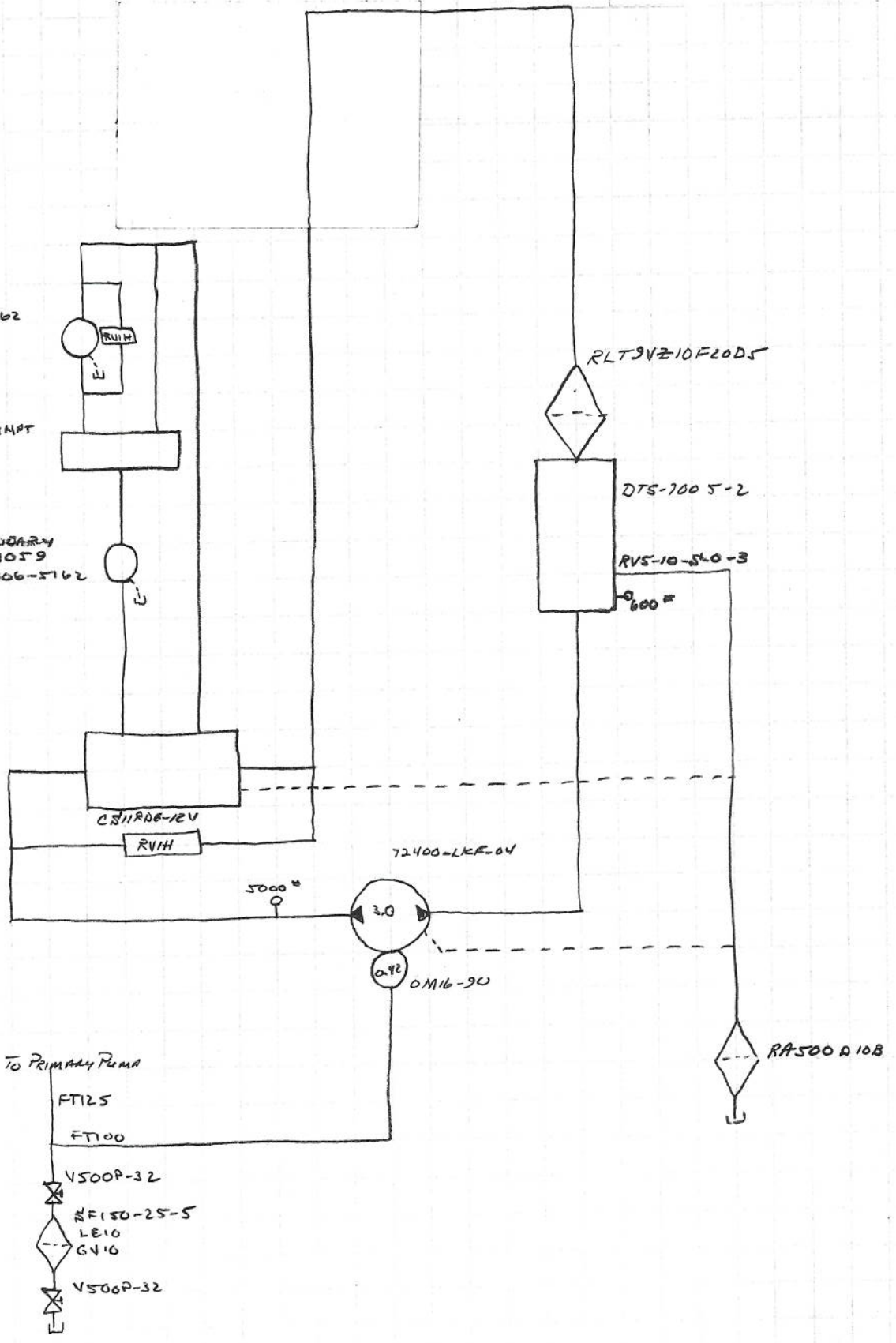
V500P-32

RF150-25-5

LE10

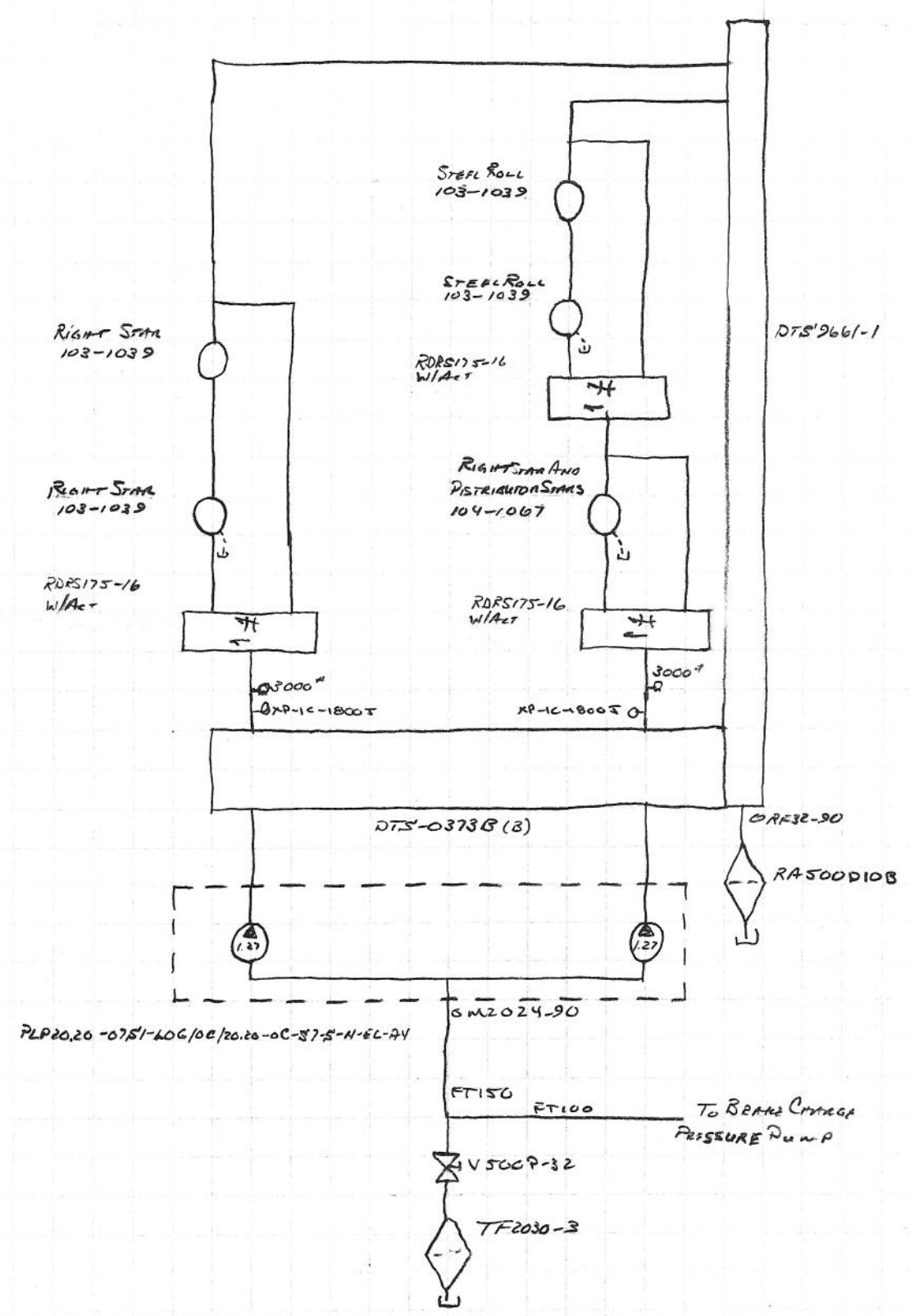
GN16

V500P-32





11/11/10  
 #11044  
 HEAVY LIFT FARM  
 4RS0465LHM



11/8/10  
 411044  
 HEARTLAND FARMS  
 4RSPH65LAN

CROSS DISTRIBUTOR SMM  
 ROLL  
 104-1067

RDRS112-30

CROSS  
 104-1067

RDRS112-30

SIDE RETURN  
 104-1067

RDRS112-30  
 W/ACT

STONE  
 104-1067

RDRS112-30  
 W/ACT

SIDE  
 104-1067

RDRS112-30  
 W/ACT

3000<sup>W</sup>  
 XP-10-1800J

3000<sup>E</sup>

DTS-08788 (A)

HDD3043-MC+C3030-M0+43-MC-N  
 2017-06007

35VQTB5  
 02-125554-5  
 2010-00012

ORF4048-30

FT250

J8VL-20-408

TF2540-3

ORF32-90

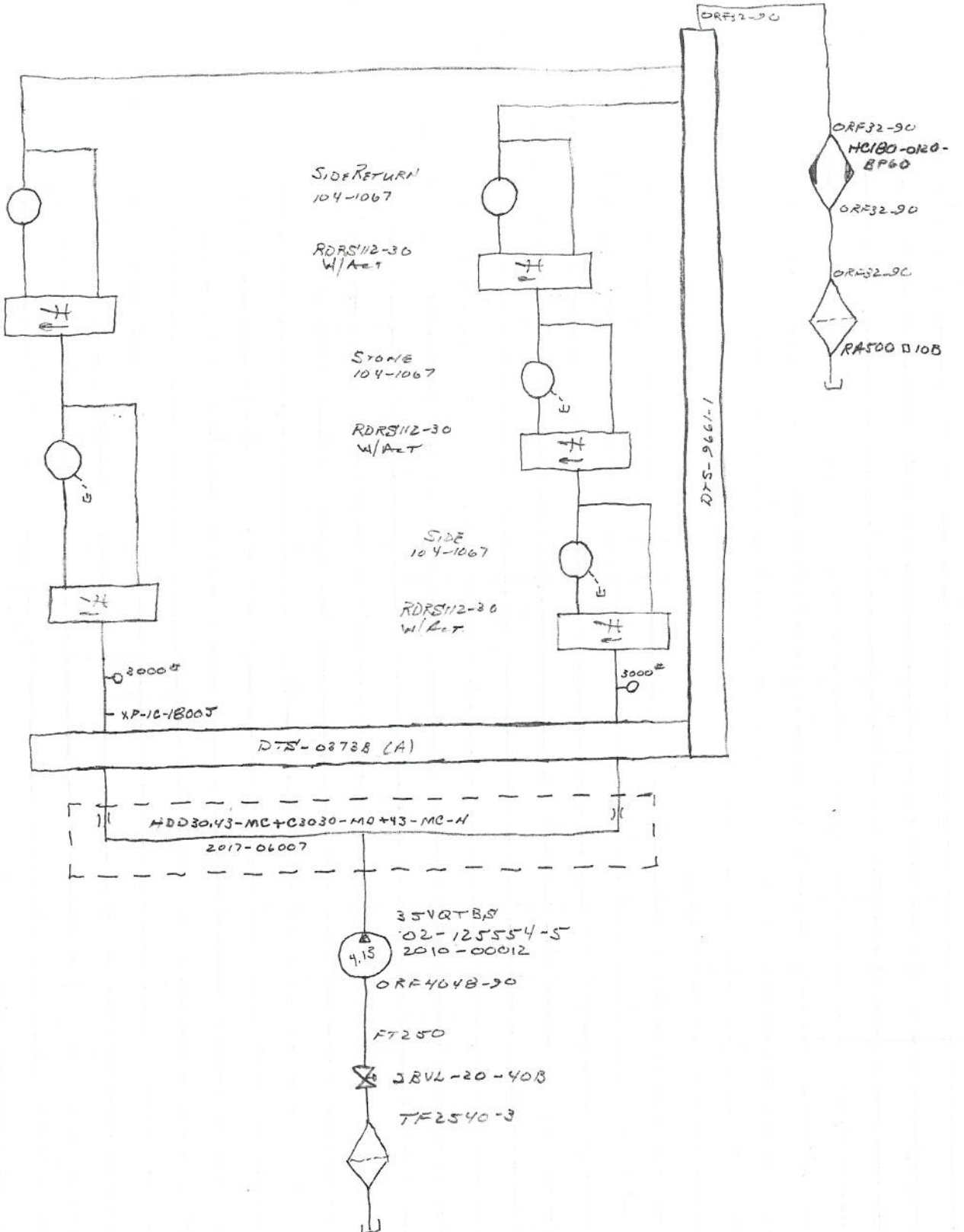
ORF32-90  
 MC180-0120-  
 8P60

ORF32-90

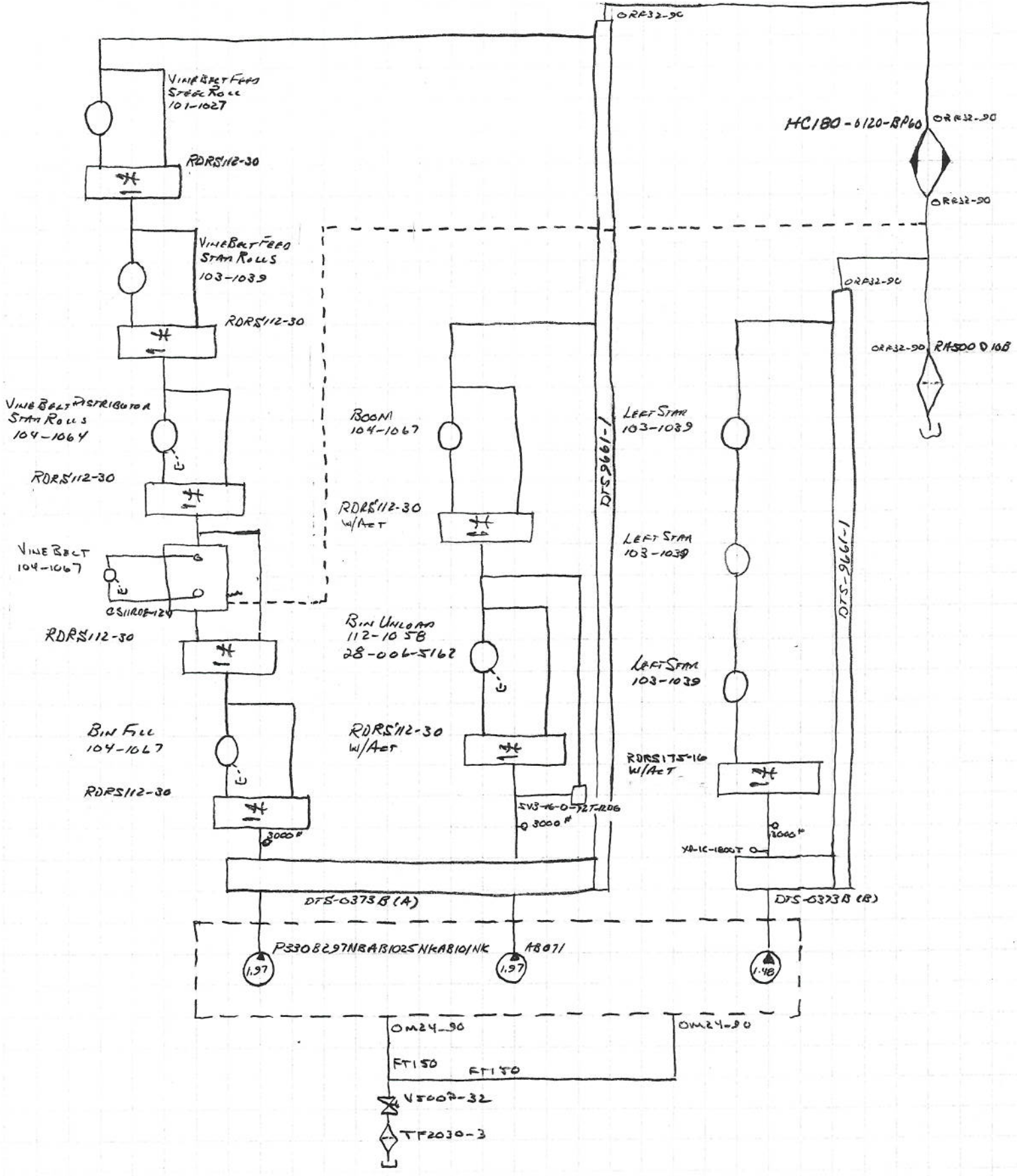
ORF32-90

RA500 110B

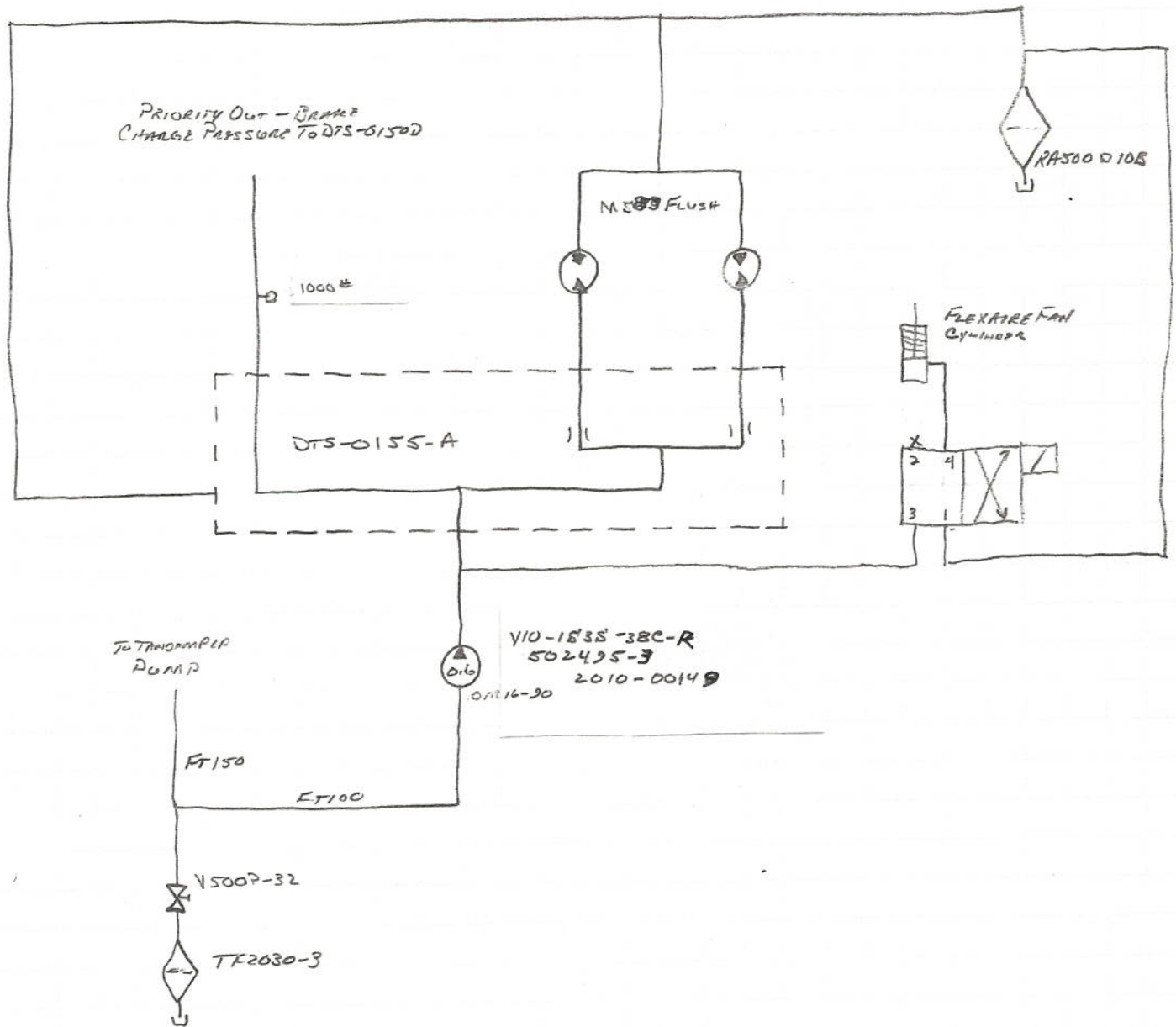
1-1996-518  
 DTS-96611



11/11/10 #11044  
 HEARTLAND Farms  
 YRS 465LAH

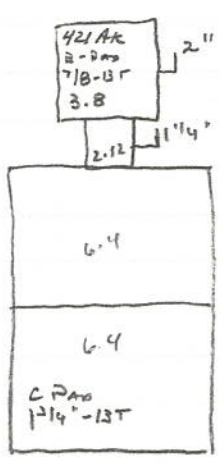


11/8/10  
 E11044  
 HEARLAND FARMS  
 4RSPH6SLAH  
 REVISION #1 - 14-DEC-2010  
 J. FLEMMING

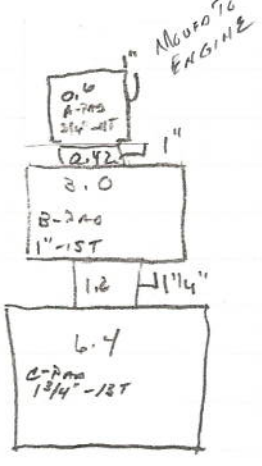




4"	3"	3"	3"	3"	4"
TF2540-3	3"X2" Bush 2" CLS N/A VSDOP-32 FT200	TF2030-3	TF2030-3 2" 90° STEEL 2" CLS N/A VSDOP-32 2" CLS N/A 2" TEE X	TF2030-3 2" 90° STEEL 2" CLS N/A VSDOP-32 2" CLS N/A 2" TEE X	4"X2" Bush 2" 90° STEEL 2" CLS N/A VSDOP-32 2"X1/2" Bush 1/2" CLS N/A SFT50-25-5 1/2" CLS N/A 2"X1/2" Bush VSDOP-32 2" CLS N/A 2" TEE X X 2"X1/4" Bush 1 1/4" 45° STEEL FT125 * TAN. 3.0/3.0 O - 2" 90° STEEL 2"X1" Bush FT100 * SINGL 3.0
2 1/2" 90° STEEL 2 1/2" CLS N/A 2BVL20-40B FT250 * 35VQTBS	ORF32-90 ZDF2215-25-5 W43-32PK-2" 2" 90° STEEL 2" CLS N/A VSDOP-32 2" CLS N/A 2" TEE X X - 2"X1/4" Bush FT125 * 76.4/6.4	2" CLS N/A VSDOP-32 2" 90° STEEL FT200 * 421AK	X - 2"X1/2" Bush FT150 * TAN. COMM. PUMP O - 2" 90° STEEL 2"X1/2" Bush FT150 * TAN. COMM. PUMP.	X - 2"X1/2" Bush FT150 * TAN. PLP O - 2" 90° STEEL 2"X1" Bush FT100 * <del>TAN. PLP</del>	

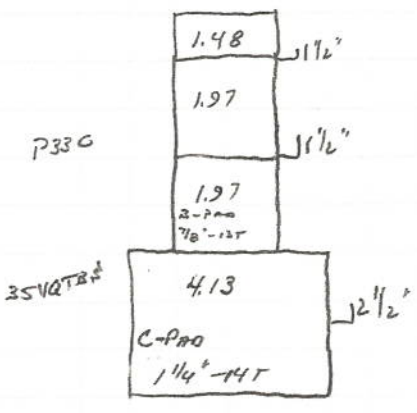


L.R.

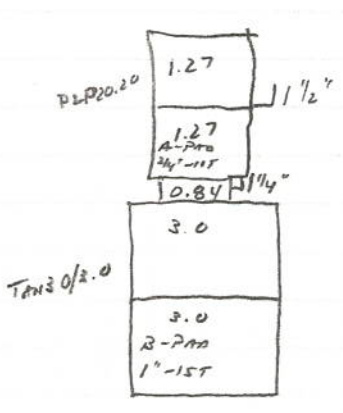


L.L.

- L.R. TANISM 6.4
- 421AK
- L.L. 6.4
- 3.0
- T.R. 35VQTBS
- TAN. COMM. PUMP
- TANISM 3.0/3.0
- TANISM-PLP 20.20
- V10
- GROUND DRIVE
- STEERING
- AIR HEAD
- SECONDARY
- CROSS
- SHOE
- BIN FILL
- BIN W/LEAD
- LEFT SPAN TABLE
- LEFT PRIMARY
- RIGHT PRIMARY
- RIGHT SPAN TABLE
- RIGHT SPAN TABLE 1ST.
- BRAND PRESSURE
- FLUSHING
- ENGINE COOLING FAN REV.

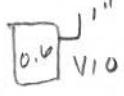


T.R.



T.L.

DURST - D13387 4AD03-1.20I-N11-BBB4-CCN-CEH-CEH-2.5'  
 DRIVE PLATE - TORSION CONTROLS 19310

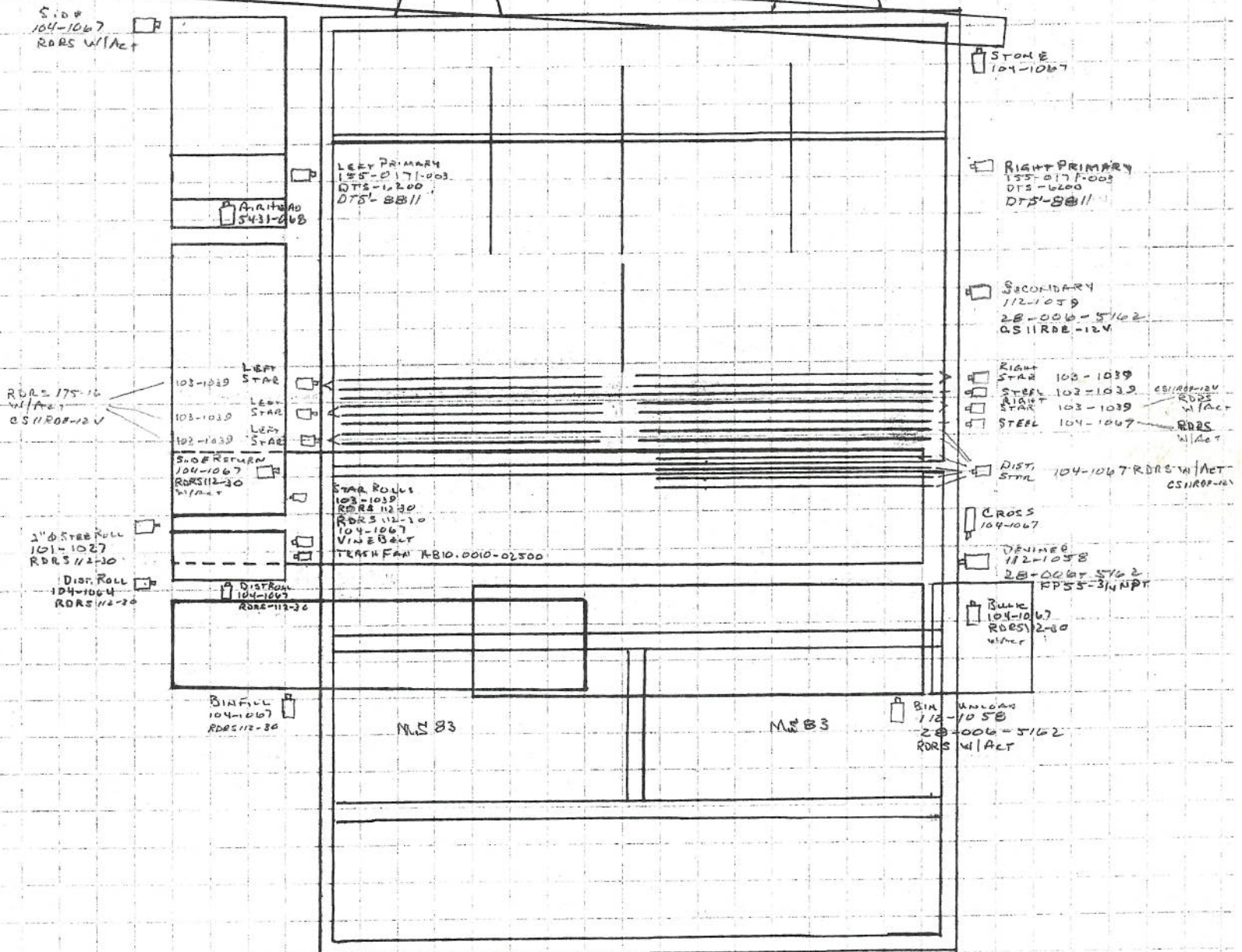




11/8/10  
 #11044  
 HARTLAND FARM  
 425P465LH

MS 18-2

MS 18-2





#11044

## HEARTLAND FARMS

11/15/2010

4RSPH-65LAH

## PLUG #1

## PIN #

1	YELLOW	92	CB 1 TO HAZARD STAT TO SWITCH
2	GREEN	91	CB2 TO AIR HEAD CLEANER / BIN FILL SWITCHES
3	ORANGE	090	RESET SWITCH TO RESET RELAY
4	BLACK	017	CB4 TO BRAKE, STEER, WARNING, SPEEDOMETER
5	RED	081	CB 10 TO FUEL PUMP SWITCH
6	YELLOW	089	RESET SWITCH TO RESET RELAY
7	WHITE	39	VINE BELT REVERSE SWITCH TO VALVE
8			
9	BLACK	0017	BRAKE SWITCH TO BRAKE SOLENOID
10	BROWN	88	CB11 TO BACK UP LIGHTS SWITCH
11	WHITE	85	CB12 TO ACTUATOR SWITCHES
12	RED	81	FUEL PUMP SWITCH TO FUEL PUMP
13	PURPLE	28	A-H CLEANER AUTO TO TIMER #10
14	WHITE	27	A-H CLEANER MANUAL TO TIMER #9 TO SOLENOID
15	BLUE	26	A-H CLEANER MANUAL TO TIMER #8 TO SOLENOID
16	BROWN	46	VINE BELT RAISE / LOWER SWITCH TO ACTUATOR
17	GREEN	45	VINE BELT RAISE / LOWER SWITCH TO ACTUATOR
18	RED	29	STROBE LIGHT
19	YELLOW	33	RIGHT SHAKER MV5 VALVE
20	RED	32	RIGHT SHAKER MV5 VALVE
21	RED	70	AIR HEAD FEED RDRS112-30 ACTUATOR
22	PURPLE	69	AIR HEAD FEED RDRS112-30 ACTUATOR
23	RED	52	CB 16 TO FOOT SWITCHES 12VDC
24	PURPLE	83	FOOT SWITCHES TO STEERING BOX
25	BROWN	057	LEFT ROW LIGHT SWITCH TO RELAY
26	BLACK	804	SEAT SWITCH TO TIME DELAY RELAY PIN 6
27	BLACK	810	SEAT SWITCH TO TIME DELAY RELAY PIN 7
28	BROWN	088	CB4 TO BACKUP ALARM SWITCH IN CAB
29	ORANGE	0924	CB20 TO 4X4 SWITCH FREEWHEEL SIDE - 12V
30	ORANGE	924	4X4 SWITCH TO FRONT MOTOR FREEWHEEL VALVE
31	BROWN	0088	BACKUP SWITCH TO ALARM
32	YELLOW	42	LEFT SHAKER MV5 VALVE
33	WHITE	43	LEFT SHAKER MV5 VALVE
34			
35	WHITE	65	LEFT STAR RDRS112-30 ACTUATOR
36	PURPLE	66	LEFT STAR RDRS112-30 ACTUATOR
37	ORANGE	50	BIN UNLOAD BYPASS SV3-16-0-12T-12DG SOLENOID

BLACK 17

#11044

HEARTLAND FARMS

11/15/2010

4RSPH-65LAH

PLUG 2

PIN #

1	BROWN	153	LEFT PRIMARY REVERSE	
2	ORANGE	154	RIGHT PRIMARY REVERSE	
3	BLACK	059	PARK SWT. TO 14(5)/15(5) RED 0015 TO SMX TO SV4-10-0	
4	YELLOW	752	HYDRAULIC OIL TEMPERATUR SENSOR TO CAB	YELLOW 752
5				
6	GREEN	155	SECONDARY / DEVINER REVERSE	
7	BROWN	54	RIGHT TURN SIGNAL	
8	YELLOW	53	LEFT TURN SIGNAL	
9	BROWN	6	BACK-UP LIGHT SWITCH TO RELAY	
10	BROWN	505	RIGHT WORK LIGHT SWITCH TO RELAY	BROWN 505
11				
12	BLACK	1	4 X 4 SWITCH TO RELAY	
13	BLACK	12	2-SPEED SWITCH TO SOLENOID / HIGH PRESSURE RELIEFS ( 2 )	
14	BROWN	21	TRASH FAN SWITCH TO SOLENOID	
15	BROWN	11	BIN FILL SWITCH TO DTS-0373B (A) SOLENOID	
16	YELLOW	5	SIDE CONVEYOR SWITCH TO DTS-0373B (A) SOLENOID	
17	BROWN	16	CROSS CONVEYOR SWITCH TO DTS-0373B (A) SOLENOID	
18	RED	82	STAR / STEEL ROLLS SWT. TO 3 DTS-0373B (B) SOL'S.	
19	YELLOW	156	LEFT PRIMARY FORWARD	
20	YELLOW	15	FAN RETURN FILTER #3 TO LIGHT	
21	BLUE	3	GROUND-DRIVE HI-PRESSURE FILTER #3 TO LIGHT	
22	YELLOW	20	HYDRAULIC LEVEL SENSOR TO CAB (BZL-12)	
23	WHITE	61	CROSS / STAR TABLE (3) PRESS. SWITCHES N.O. TO CAB (BZ 6562)	
24	BLACK	22	BIN / BOOM SWT. TO DTS-0373B (A) SOLENOID	
25	ORANGE	143	CB7 TO HYDRO NEUTRAL SWITCH #1	
26	ORANGE	144	HYDRO NEUTRAL SWITCH #2 TO PANEL RELAY	
27	RED	157	RIGHT PRIMARY FORWARD	
28	GREEN	607	DTS-0160 TO CAB SPEEDOMETER	GREEN 607
29	RED	149	STEEL ROLLS SWITCH TO RDRS112-30 ACTUATOR	
30	YELLOW	150	STEEL ROLLS SWITCH TO RDRS112-30 ACTUATOR	
31	ORANGE	145	STAR DIST.ROLLS SWT. TO RDRS112-30 ACTUATOR	
32	BLUE	146	STAR DIST.ROLLS SWT. TO RDRS112-30 ACTUATOR	
33	ORANGE	147	HUMP SHAFT ACTUATOR	
34	BLUE	148	HUMP SHAFT ACTUATOR	
35	BLACK	151	STAR TABLE SPACING ACTUATOR	
36	GREEN	425	TEMP. SENDER IN PRIMARY CIRCUIT TO CAB	GREEN 425
37	RED	152	STAR TABLE SPACING ACTUATOR	

#11044

HEARTLAND FARMS

11/15/2010

4RSPH-65LAH

PLUG 3

PIN

*1	RED	18	WIPER POWER
2	RED	12	RADIO POWER
3	PURPLE	012	CB6 TO PURPLE 'ACC' IN POWER VIEW HARNESS
4	BLACK	20	GROUND
5	BROWN	503	ROAD LIGHT SWITCH
6	RED	22	DOME-PANEL LIGHT SWITCH-RADIO MEMORY POWER
*7	BROWN	507	CAB FIELD LIGHTS POWER
8	BROWN	572	WORK LIGHT SWITCH TO LEFT WORK LIGHT RELAYS
9	PURPLE	013	CB12 TO POWER VIEW HARNESS ( ENGINE EMERGENCY KILL )
*10	BROWN	526	CAB ROAD LIGHTS POWER
11	BLUE	652	FUEL GAUGE
12	RED	022	CB8 TO RED 022 IN POWER VIEW HARNESS
13	GREEN	422	STARTER RELAY TO POWER VIEW HARNESS
14	BROWN	504	FIELD LIGHTS SWITCH
*15	BLACK	156	AUXILLARY POWER BOX
16			

WHITE 85

#11044

HEARTLAND FARMS

11/15/2010

4RSPH-65LAH

PLUG 4

SW#/PIN#					
	1	RED	21	CB7 TO PIN 4 ON GAUGE PANEL	
1	2	BLACK	BLACK	STONE BOX MV5 VALVE	BLACK 108
1	3	RED	RED	STONE BOX MV5 VALVE	RED 109
2	4	ORANGE	ORANGE	BOOM OUTER MV5 VALVE	ORANGE 110
2	5	BLUE	BLUE	BOOM OUTER MV5 VALVE	BLUE 111
3	6	BLK/WHT	YELLOW	BOOM LIFT MV5 VALVE	WHITE 112
3	7	RED/WHT	BROWN	BOOM LIFT MV5 VALVE	BROWN 113
4	8	BLU/WHT	VIOLET	BOOM SWING MV5 VALVE	PURPLE 114
4	9	GRN/WHT	GRAY	BOOM SWING MV5 VALVE	GREEN 115
5	10	ORG/BLK	WHT/BRN	COULTER MV5 VALVE ( ORANGE 41 )	YELLOW 116
5	11	BLU/BLK	WHT/BLK	COULTER MV5 VALVE	BROWN 117
6	12	RED/BLK	WHT/RED	BLADE MV5 VALVE ( RED 40 )	RED 118
6	13	GRN/BLK	WHT/YEL	BLADE MV5 VALVE	BLACK 119
	14	BLUE	55	LEFT CRAB FOOT SWITCH TO STEERING BOX RELAY	
	15	GREEN	605	A.H. FAN RPM PICKUP TO XA2 MODULE TO CAB	
	16	ORANGE	56	RIGHT CRAB FOOT SWITCH TO STEERING BOX RELAY	
	17	BROWN	37	RIGHT STAR TABLE RDRS112-30 ACTUATOR	
	18	GREEN	38	RIGHT STAR TABLE RDRS112-30 ACTUATOR	
	19	BLUE	71	BIN FILL MAN. SWITCH TO MD3 ( DOWN )	
	20	ORANGE	72	BIN FILL MAN. SWITCH TO MD3 ( UP )	
	21	RED	75	BIN FILL AUTO. SWT. TO MD3 PANEL JUNCTION BLOCK	
	22				
	23				
	24	GREEN	78	BIN UNLOAD SWITCH TO RDRS112-30 ACTUATOR	
	25	BROWN	79	BIN UNLOAD SWITCH TO RDRS112-30 ACTUATOR	
	26	YELLOW	76	STONE RDRS112-30 ACTUATOR	
	27	GREEN	77	STONE RDRS112-30 ACTUATOR	
	28	WHITE	41	TRAVEL MODE SWITCH TO MD3 / XA2 MODULES	
	29	WHITE	371	LEVEL WARNING LIGHT TO MD3 / XA2 MODULES	
	30	BLACK	51	AIR HEAD DISCHARGE RDRS112-30 ACTUATOR	
	31	ORANGE	52	AIR HEAD DISCHARGE RDRS112-30 ACTUATOR	
	32	ORANGE	47	BOOM RDRS112-30 ACTUATOR	
	33	WHITE	48	BOOM RDRS112-30 ACTUATOR	
	34				
	35				
	36	BLACK	020	CYBER TECH HANDLE TO PANEL GROUND	GREEN
	37	GREEN	091	CB2 TO CYBER TECH HANDLE	WHITE

#11044

**COLUMN PLUG  
HEARTLAND FARMS**

11/15/2010

4RSPH-65LAH

**PLUG 5**

<b>PIN #</b>		<b>COLUMN PLUG</b>		
1	11	RED	ST 87 HOT SIDE TERMINAL	
3	13	RED	DELAY RELAY PIN #86	
4	502	BROWN	POWER FROM TURN STAT	502 TO 507
5	104	WHITE	CLUTCH SWITCH N.C. TO RELAY	
14	059	BLACK	TO CLUTCH SWITCH N.O. POSITON TO 15 ( 5 )	
15	0015	RED	TO SMX SWITCH - "COM" / N.O. ON SMX RED 15 TO SV4 SOLENOID	
18	522	BROWN	RIGHT TURN SIGNAL - BROWN 54 ON MACHINE	512 TO 522
20	523	BROWN	LEFT TURN SIGNAL - YELLOW 53 ON MACHINE	513 TO 523

#11044

**COLUMN PLUG  
HEARTLAND FARMS**

11/15/2010

4RSPH-65LAH

**PLUG #6**

1	BLACK	AIR HEAD CONTROLLER POWER SUPPLY PIN "4"
2		
3	ORANGE	AIR HEAD CONTROLLER COMMAND SIGNAL PIN "2"
4	BLUE	AIR HEAD CONTROLLER COMMAND SIGNAL PIN "3"
5	BLACK / WHITE	LEFT / RIGHT PRIMARY CONTROLLAER POWER SUPPLY PIN "8"
6		
7	BLUE / WHITE	LEFT PRIMARY CONTROLLER COMMAND SIGNAL PIN " 6 "
8	GREEN / WHITE	LEFT PRIMARY CONTROLLER COMMAND SIGNAL PIN " 7 "
9		
10	BLUE / BLACK	RIGHT PRIMARY CONTROLLER COMMAND SIGNAL PIN "10"
11	RED / BLACK	RIGHT PRIMARY CONTROLLER COMMAND SIGNAL PIN "11"
12	GREEN / BLACK	SECONDARY CONTROLLER POWER SUPPLY PIN "16"
13		
14	GREEN	SECONDARY CONTROLLER COMMAND SIGNAL PIN "14"
15	WHITE / BLACK	SECONDARY CONTROLLER COMMAND SIGNAL PIN "15"
16		

CONTROLLER POWER SUPPLY PIN " B " TO BLOCK GROUND

ENERGIZED COIL

AIR HEAD PUMP: NEXT TO FLANGE - "IN" - PRESS. OUT PORT "A"  
AWAY FROM FLANGE \_ "OUT"

PRIM/SEC PUMP: NEXT TO PRESS. PORTS: "IN" - PRESS OUT PORT "A"  
AWAY FROM PRESS. PORTS - "OUT"

CRANTRAC DISPLAY  
CAB CORNER PINOUT

PIN # 1	BLACK		BELDEN 8762
2	CLEAR		BELDEN 8762
3	BLACK	015	GROUND TO DISTRIBUTION PANEL
4	RED	028	12VDC FRPM DISTRIBUTION PANEL

DISPLAY PINOUT

PIN # 1	BLACK	015	GROUND
2	RED	028	12VDC
7	CLEAR		BELDEN 8762
8	BLACK		BELDEN 8762

**LARGE 3 PIN PLUG**

**PLUG #7**

1	ORANGE	90 (H)	MAIN POWER RESET RELAY (N.O.) TO MASTER SWITCH
2	YELLOW	89 (H)	MAIN POWER RESET RELAY (N.O.) TO MASTER SWITCH
3	BLACK	0012 (H)	CB7 TO HI / LO SWITCH

**KAR-TECH ENCLOSURE**

#11044

**HEARTLAND FARMS**

11/15/2010

4RSPH 65"LAH

**PLUG #1**

PIN #			
1	ORANGE	AIR HEAD POTENTIOMETER TERMINAL #2	8468
2	BLUE	AIR HEAD POTENTIOMETER TERMINAL #3	8468
3	BLACK	AIR HEAD SWITCH - ON / OFF	8468
4	BLUE/WHITE	LEFT PRIMARY POTENTIOMETER TERMINAL #2	8468
5	GREEN/WHITE	LEFT PRIMARY POTENTIOMETER TERMINAL #3	8468
6	BLACK/WHITE	LEFT / RIGHT PRIMARY SWITCH - ON / OFF	8468
7	BLUE/BLACK	RIGHT PRIMARY POTENTIOMETER TERMINAL #2	8468
8	RED/BLACK	RIGHT PRIMARY POTENTIOMETER TERMINAL #3	8468
9	GREEN	SECONDARY POTENTIOMETER TERMINAL #2	8468
10	WHITE/BLACK	SECONDARY POTENTIOMETER TERMINAL #3	8468
11	GREEN/BLACK	SECONDARY SWITCH - ON / OFF	8468
12	BLACK	0020 KAR-TECH GROUND TO PANEL	P

**PLUG #2**

PIN #			
1	RED	AIR HEAD COIL #1 - PIN "A"	BELDEN 9418
2	GREEN	LEFT PRIMARY COIL #1 - PIN "A"	9418
3	BLACK	RIGHT PRIMARY COIL #1 - PIN "A"	9418
4	WHITE	SECONDARY COIL #1 - PIN "A"	9418
5			
6			
7			
8			
9			
10			
11			
12			

- LEFT PRIMARY 1
- RIGHT PRIMARY 2
- AIR HEAD 3
- SECONDARY 4