

#06012

Lenhard AG

4 RPTH W/65" AH

LARGE 16 PIN AMP PLUG

PIN #

*1	RED ✓	8AWG	12VDC FROM ST95 IN FRAME PANEL
2	BROWN ✓	21	TRASH FAN SWITCH TO SV4-10-C-6T-12TD SOLENOID
3	BLACK ✓	22	BOOM SWITCH TO DTS-4208B SOLENOID
4	YELLOW ✓	5	AIR HEAD DISCHARGE SWITCH TO DTS-0373B SOLENOID
5	BROWN ✓	11	AIR HEAD FEED SWITCH TO DTS-0373B SOLENOID
6	BROWN ✓	16	CROSS SWITCH TO DTS-0373B SOLENOID
*7	RED ✓	8AWG	12VDC FROM ST95 IN FRAME PANEL
8	RED ✓	82	SECONDARY SWITCH TO DTS-0373B SOLENOID
9	RED ✓	13	KEY SWITCH "IGN" TO ST95'S IN FRAME PANEL
*10	BLACK ✓	8AWG	PANEL GROUND TO ENGINE GROUND
11	RED	29	STROBE LIGHT SWITCH TO STROBE LIGHT
★ 12	BLACK	23	STAR Roll ON/OFF SWITCH To DTS 4208B SOLENOID
13			
14			
*15	BLACK ✓	8AWG	PANEL GROUND TO ENGINE GROUND
16			

★ ADDED 2GG7U26L Pump & WIRED 4208B
FOR AFE TABLE 7-9-13

37 AMP PLUG

PIN

1	YELLOW	20	HYDRAULIC OIL LEVEL SENSOR TO BZL12
2	WHITE	61	CROSS PRESSURE SWITCH TO BZL12
3	YELLOW	15	AIR HEAD FILTER TO TGA10 LIGHT
4	BROWN	06	BACK UP LIGHT SWITCH TO BACK UP LIGHT RELAY IN PANEL
5	BLACK	034	LEFT WORK LIGHT SWITCH TO LEFT WORK LIGHT RELAYS IN PANEL
6	BLUE	036	RIGHT WORK LIGHT SWITCH TO RIGHT WORK LIGHT RELAYS IN PANEL
7	YELLOW	053	FLASHER SWITCH TO SIGNAL STAT IN PANEL TO FLASHERS
8	ORANGE	50	REAR WHEEL ASSIST SWITCH TO REAR WHEEL ASSIST MANIFOLD SOL
9	BLUE	26	AIR HEAD CLEANER MANUAL SWITCH TO PIN #8 ON TIMER IN PANEL
10	WHITE	27	AIR HEAD CLEANER MANUAL SWITCH TO PIN #9 ON TIMER IN PANEL
11	PURPLE	28	AIR HEAD AUTOMATIC SWITCH TO PIN #10 ON TIMER IN PANEL
12	RED	32	VIBRATOR SWITCH TO RDRS112-30 ACTUATOR
13	YELLOW	33	VIBRATOR SWITCH TO RDRS112-30 ACTUATOR
14	RED	149	SECONDARY SWITCH TO RDRS112-30 ACTUATOR
15	YELLOW	150	SECONDARY SWITCH TO RDRS112-30 ACTUATOR
16	GREEN	45	AIR HEAD FEED SWITCH TO RDRS112-30 ACTUATOR
17	BROWN	46	AIR HEAD FEED SWITCH TO RDRS112-30 ACTUATOR
18	ORANGE	147	HUMP SHAFT SWITCH TO ACTUATOR
19	BLUE	148	HUMP SHAFT SWITCH TO ACTUATOR
20	RED	81	FUEL PUMP SWITCH TO FUEL PUMP
21	BLACK	108	SRONE BOX MV5 VALVE
22	RED	109	STONE BOX MV5 VALVE
23	YELLOW	116	COULTER MV5 VALVE
24	BROWN	117	COULTER MV5 VALVE
25	RED	118	BLADE MV5 VALVE
26	BLACK	119	BLADE MV5 VALVE
27	PURPLE	114	SWING MV5 VALVE
28	GREEN	115	SWING MV5 VALVE
29	WHITE	112	LIFT MV5 VALVE
30	BROWN	113	LIFT MV5 VALVE
31	ORANGE	110	OUTER MV5 VALVE
32	BLUE	111	OUTER MV5 VALVE
33	PURPLE	83	AUTO CENTER SWITCH TO RELAY IN STEERING BOX
34	BLUE	55	LEFT STEER FOOT SWITCH TO RELAY IN STEERING BOX
35	ORANGE	56	RIGHT STEER FOOT SWITCH TO RELAY IN STEERING BOX
36	BROWN	153	LEFT PRIMARY REVERSE FOOT SWITCH TO REVERSING VALVE
37	ORANGE	154	RIGHT PRIMARY FOOT SWITCH TO REVERSING VALVE

7	6	5	4	3	2	1
30A ENGINE Exhaust	30A BACKLIGHT RELAY	30A Rt. Rear Work LIGHT RELAY	30A Rt. Front Work LIGHT RELAY	30A Lt. Rear Work LIGHT RELAY	30A Lt. Front Work LIGHT RELAY	20A A.H. FILTER YELLOW 10 CROSS PAGES SWITCH BLACK 61 HYDRAULIC LEVEL YELLOW 25
	BROWN	BLUE	BLUE	BLACK	BLACK	

HAZARD STAT

- 1 YELLOW 53
- 1 YELLOW 53

T
10 AMP FAST
ACTING TO

LEFT FRONT WORK LIGHTS

- 85 $\frac{1}{2}$
- 86 BLACK 034
- 87 CB 2
- 30 BLACK 340

CCIM GAUGE UNITS.
1 RED 0028

ST95
1 1 1
12VDC KEY SWIT. CB 1-3
90ACB | RED 13

LEFT REAR WORK LIGHTS

- 85 $\frac{1}{2}$
- 86 BLACK 034
- 87 CB 3
- 30 BLACK 34

ST95
1 1 1
12VDC KEY SWIT. CB 4-7
90ACB | RED 13

RIGHT FRONT WORK LIGHTS

- 85 $\frac{1}{2}$
- 86 BLUE 036
- 87 CB 4
- 30 BLUE 360

ST95
1 1 1
12VDC KEY SWIT. TRACTOR
90ACB | RED 13 PANDA &
C.B.'s.

RIGHT REAR WORK LIGHTS

- 85 $\frac{1}{2}$
- 86 BLUE 036
- 87 CB 5
- 30 BLUE 36

ST95
1 1 1
12VDC KEY SWIT. TRACTOR
90ACB | RED 13 PANDA
TO RED 012 C.B.'s,
OAS I.O. KEY
SWITCH

AIR HEAD CLEANER TIMER

- 8 - BLUE 26
- 9 - WHITE 27
- 10/11 - PURPLE 28
- 6/2 - $\frac{1}{2}$

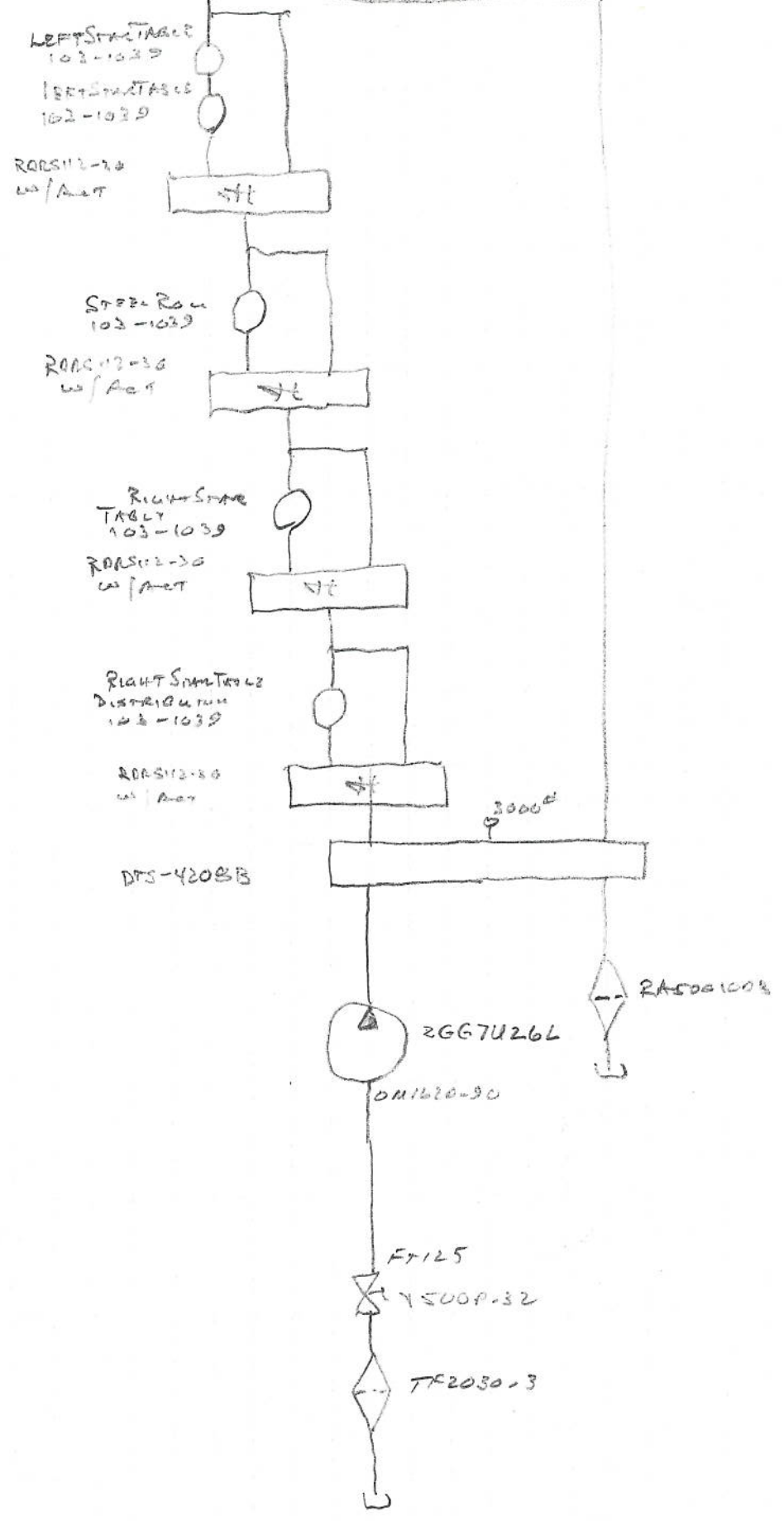
GROUND S

- 1 RELAYS
- 1 TIMER
- 1 CCIM - BLACK 0015

BACKUP LIGHTS

- 85 $\frac{1}{2}$
- 86 BROWN 06
- 87 CB 6
- 30 BROWN 6

7/3/13
#06012
LEHMAN/AC
4RPT#65LH4



7/8/09
E06012
7RAT# 65CAN

VIBRATION
104-1067

RORS112-30
W/ACT

DEVINER
112-1058
2B-006-5162

FPSS-3/4NAT

SECONDARY
112-1058
2B-006-5162

RORS112-30
W/ACT

CROSS DISTRIBUTION
ROCK 104-1067

RORS112-30

LEFT START TABLE
103-1039

LEFT START TABLE
103-1039

RORS112-30
W/ACT

STEEL ROLL
103-1039

RORS112-30
W/ACT

Rt. START TABLE
103-1039

RORS112-30
W/ACT

RIGHT START TABLE
DISTRIBUTION
103-1039

RORS112-30
W/ACT

CROSS
104-1067

DTS-0606-1

ORF32-90

ORF32-90

AOC-57-90629
ORF32-90

ORF32-90

TR18C-10

DTS-0373B

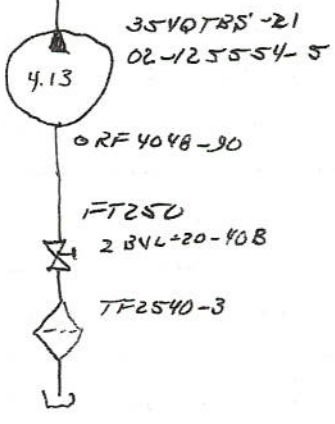
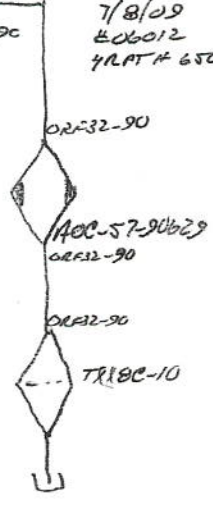
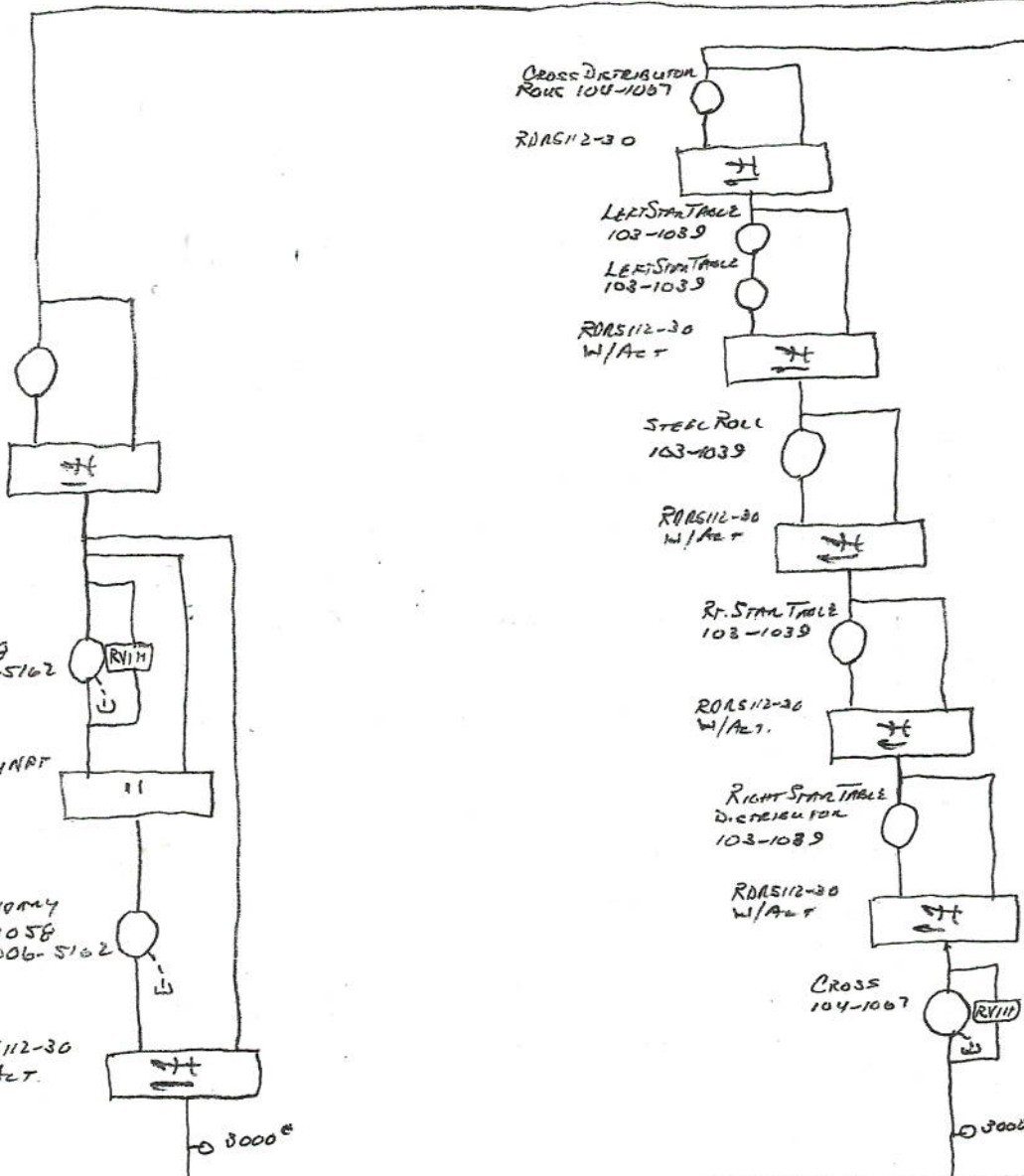
FD00181800

35VQTR5-21
02-125554-5
4.13

ORF 4048-90

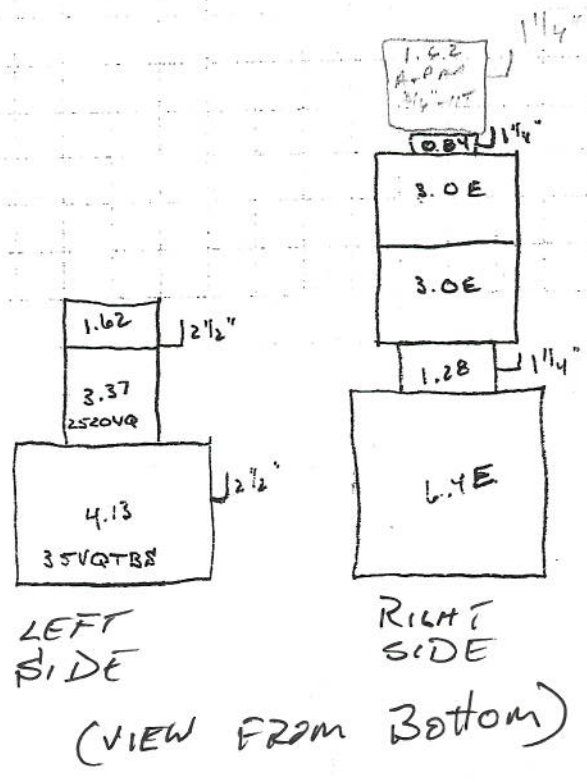
FT250
2 344-20-40B

TF2540-3



9/1/06
#06012
4RATH

④"	③"	②"	③"	④"
TF2540-3	TF2030-3	2" Ccls N/A	3" X 2" Bush	TF2540-3
2 1/2" Ccls N/A	2" Ccls N/A	1/500P-32	2" Ccls N/A	2 1/2" Ccls N/A
2BVL-20-40B	1/520P-32	2" X 1 1/2" Bush	1/500P-32	2BVL-20-40B
FT250	2" X 1 1/4" Bush	1 1/2" Ccls N/A	2" X 1 1/2" Bush	FT250
* 35VQTBS	FT125	SF150-25-5	1 1/2" Ccls N/A	* 2520VQ
	* 266	1 1/2" X 1 1/4" Bush	SF150-25-5	
		1 1/4" Ccls N/A	1 1/2" X 1 1/4" Bush	
		1/500P-20	1 1/4" Ccls N/A	
		FT125	1/500P-20	
		* T3.0E	FT125	
			* 6.4E	



DTS - ILLINOIS
 2240 LANDMEIER ROAD
 ELK GROVE VILLAGE, IL 60007
 PH: 847-758-1705
 FAX: 847-758-1710

DTS - HEADQUARTERS
 3560 BUSCH DRIVE
 GRANDVILLE, MI 49418
 PH: 616-538-3759
 FAX: 616-538-3798

DTS - MADISON HEIGHTS
 31731 SHERMAN DRIVE
 MADISON HEIGHTS, MI 48071
 PH: 248-585-9500
 FAX: 248-585-0855

7/3/13

#06012
 LAMBERTS
 HARTMAN
 SHERMAN DRIVE

1	ZG87U26L	2022-0473	
5	2100-12-12		
1	DM1620-20		
4	HC125		
1	PT125		
1	2" x 1 1/2" Bore		
1	V500P-32	2017-03032	
1	2" P... N... M		
1	TF2030-3	2015-017	
2	3" FWH	2015-019	
1	CF1P-210A	2021-13000	
1	602-S7	2021-16027	
1	2001-00-04		
1	T10-00V	2004-011	
1	GCP-04	2003-010	
1	6404-04-04		
1	6201-04-04		
1	DTS-420873	2017-10026	
1	927801-725	2001-0169	
1	200104	2001-0153	
1	730801-002	2001-0166	
1	5541-1038R	2001-0241	
6	500450-128		
2	584025-128		
1	46530	2001-0153	
	Take 1 1/2" Sherman Hose		