

#07018

TUpline

6RPTW

Detail List

627506

Part#	Description	Qty
100037	3/8" Steel Line Clamp	X
100050	1/2" Steel Line Clamp	X
100062	5/8" Steel Line Clamp	XX II
100087	7/8" Steel Line Clamp	XX II
100100	1" Steel Line Clamp	
100125	1 1/4" Steel Line Clamp	
100150	1 1/2" Steel Line Clamp	II
100200	2" Steel Line Clamp	
100225	2 1/4" Steel Line Clamp	II
100250	2 1/2" Steel Line Clamp	
ABAX1000-06	Straight Tube Adapter to JIC Male #6	XXXX
ABAX1000-08	Straight Tube Adapter to JIC Male #8	XXXX
ABAX1000-10	Straight Tube Adapter to JIC Male #10	XXXX
ABAX1000-14-12	Strght Tube Adptr to JIC Male #14-12	XXXX
ABAX1000-16	Straight Tube Adapter to JIC Male #16	
BA19-06	3/8" Replacement Sleeve	
BA19-08	1/2" Replacement Sleeve	
BA19-10	5/8" Replacement Sleeve	
BA19-14	7/8" Replacement Sleeve	
BA19-16	1" Replacement Sleeve	
BAX1100 06	3/8" NPT Female x 3/8" Tube	
BAX1100 08	1/2" NPT Female x 5/8" Tube	
BAX1100 10	1/2" NPT Female x 5/8" Tube	
BAX1100 14	3/4" NPT Female x 7/8" Tube	
BAX1200 06	3/8" Tube Union	
BAX1200 08	1/2" Tube Union	
BAX1200 10	5/8" Tube Union	
BAX1200 14	7/8" Tube Union	
BAX1200 16	1" Tube Union	
BAX3100 06	3/8" NPT x 3/8" Tube Tee	
BAX3100 08	1/2" NPT x 1/2" Tube Tee	
BAX3100 10	1/2" NPT x 5/8" Tube Tee	
BAX3100 14	3/4" NPT x 7/8" Tube Tee	
BAX3100 16	1" NPT x 1" Tube Tee	
BAX3200 08	1/2" Tube Tee	
BAX3200 14	7/8" Tube Tee	
BAX3200 16	1" Tube Tee	

ETA-IL Parts



Date ~~Ordered~~ _____

Qty.	Parts Number	Description	Date Ordered _____
1	40001-019	HOODED VALVE BANK MOUNT	
1	30021-019	MVS-4SECTION MOUNT	
1	30028-019	REVERSING VALVE BRKT	
5	30009-019	RDRS MOUNT	
3	30027-019	RDRS W/ ACT. MOUNT	
2	(1/2 x 6) x 7 1/4" FLAT STOCK	DTS 8811 MOUNTS	
20"	2x2x 1/8" ANGLE	GANGE PANEL	
1	733-5793	2 3/4" MUFF CLAMP	
1	733-5794	3" MUFF. CLAMP	
36"	3/8" x 1 1/2" FLAT STOCK	PUMP SUPPORT BRKT	
8	1/4-20 x 2 1/4 HHCS		
10	1/4" LOCK WASHER		
2	1/4-20 x 2 1/2 HHCS		
5 FT	MUFF PIPE 32	2"	
5 FT	MUFF PIPE 24	1 1/2"	
4	5/16-18 x 3/4 HHCS		
4	5/16- 18 LOCK WASHER		
2	5/16-18 NUT		

HJV Manufacturing Order Form *OK 2-7-07*

Customer Name: **TUPLING FARMS**
 Address: **SHELBURNE ONT.**
 Phone Number: **519-925-6591**
 Fax Number: **519-925-6795**

A J Final Sheet

Pull Type Windrower	Standard	Option
Rear Tires:		
17.5 x 24		
18.5 x 16.1		
28L X 26 BAR TREAD TIRES		X
Row Spacing:		
34" w/30" Bed		
34" w/32" Bed		
36" w/33" Bed		X
36" w/34" Bed		
38" w/35" Bed		
38" w/36" Bed		
Rows:		
3		
4		
6		X
8		
Primary Bed:		
Full Width-Common Lift		X
Split w/ Center Coultter		
Full Width, side to side w/cylinder lift		
Primary Bed:		
Single Width		X
Flex LockWood Style		
Double Width		
Digger blades		
12" regular		
15" extended		X
Center blades		
12" regular		
15" extended		X
Full Width Solid Blade		
Primary Drives:		
Top Drive		
REVERSE DRIVE		X
Chain & Sprocket		
Gear Box 2000 Motor		
Gear Box 6000 Motor		X
VIS Motors		

Description: **6 ROW PT WINDROWER**
 Serial #: **07018**
 Build #: _____
 For Office use Only:

HJV Manufacturing Order Form

Customer Name: TUPLING FARMS

Address: SHELBURNE ONT.

Phone Number: 519-925-6991

Fax Number: 519 925 6795

Secondary:			
Regular Length		X	
18" Extended			
Secondary Chain:			
Full Width		X	THREE STEP STAGER
Single Width			
Secondary Drive:			
Chain & Sprocket			
Gear Box 2000 Motor			
Gear Box 6000 Motor		X	
Deviner:			
125mm - 5"			
150mm - 6"		X	
180mm - 7"			
200mm - 8"			
Deviner Drive:			
Chain & Sprocket			
Gear Box 2000 Motor			
Gear Box 6000 Motor		X	
Snapping rolls			
Primary Reversing Valves - 2 needed:		X	
Secondary & Deviner		X	
Double Disk Coulters		X	
Single Disk Coulters			
Kickers			
Star Table			
Full Width After the Secondaries			
4 Row			
6 Row			
5 Star shaft with one smooth roll and distributor shafts			
8 Star shaft with two smooth roll and distributor shafts			
Cross:			
35"			
40"		X	LEFT HAND DISCHARGE
48"			
Split Cross:			
2-24"			

Walter C. Tupper 10407

HJV Manufacturing Order Form

Customer Name: **TUPLING FARMS**


Address: **SHELBURNE ONT.**

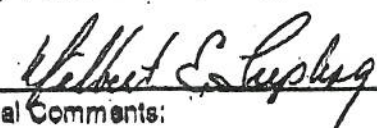
Phone Number: **519-925-6591**

Fax Number: **519 925-6795**

Vibrator:			
Rotating Primary			
Rotating Secondary			
Rocking Shaker	X	SPLIT IN THE MIDDLE RIGHT AND LEFT HAND DRIVE	
Rear Steering:	X		
Non Steerable			
48 Hydro pump Primary secondary			
Hitch Center Pull	X		
Hitch Side Pull			
Deliver row 1 & 2	X		
Deliver row 2 & 3			

Chain:							
Location	Qty	Rod Size	Width	MM	LPR	Pattern	Covering
PRIMARY		0.50	33	50		2DN1ST	PLAIN
<i>2003-00201</i>							
SECONDARY		0.44		50		ALL ST	SRT
<i>2003-00202, 203, 204</i>							
DEVINER		0.63		150		ALL ST	SRT
CROSS		0.44		45		ALL ST	SRT
<i>2003-00206</i>							

H.J.V. Representative:  Date: **04/01/07**

Customer Approval/Acceptance:  Date: **01 04 07**

Additional Comments:

MAKE SURE THE SECONDARY CHAIN FITS THE BED

ROCK GUARDS ON DIGGER BLADE BRACKETS

PRIMARY AND DEVINER CHAIN MUST BE THE SAME AS NOFFSINGER HARDEN CHAIN

Ray Matthews 1/08/06

HJV Manufacturing Order Form

Customer Name: TUPLING FARMS

Address: SHELburnE ONT.

Phone Number: 519-925-6591

Fax Number: 519 925-6795

TRACTOR TREAD TIRES

Robert C. Tupling 01 04 07

- 6- CENTER BLADE 14" EXTENDED 30025-013
- 6- 30051-013 DIGGER BLADE EXTENDED CENTER POINT
- 4- DSR 2460 COWLTER
- 4- 31011-007 COWLTER CAP PROTECTOR
- 24- 1/2 x 2 1/2 FISHCS
- 18- 1/2 x 2 FISHCS
- 42- 1/2 SPINLOCK

Alliston Location (Head Office)

R.R. #3, 5770 County Road #1B
Alliston, Ont. L9A 1V9
705.432.3225 • FAX 705.432.8899

Hershey Location:

72090 London Road, R.R. #1
Hershey, Ont. N0M 1X0
519.228.2485 • FAX 519.263.2455

Grand Falls Location:

1425 Tabique Road
Drummond, NB B3V 2P7
506.473.8887 • FAX 506.473.8874

P.E.I. Location:

240 Mason Road
Stratford, P.E.I. C1B 2E9
502.940.1444 • FAX 502.940.3939

www.hjv.ca

HYDRAULICS FINISH MATERIALS LIST

BEGINNING DATE 4-5-07
END DATE

PROJECT NO.

Tupling '07

QTY	PART NUMBER	DESCRIPTION
41	2035-01009	3 1/2 STEEL W/ 5" FLANGE
75	2035-00007	4" SUPERIOR
27	2035-00008	5" SUPERIOR
99	2035-07002	STAND OFF
35	2035-01001	3 1/2 KRYD W/ 5" FLANGE
15	2035-01000	3 1/2 KRYD W/OUT FLANGE
9	2035-01008	3 1/2 STEEL W/OUT FLANGE
1	2035-01004	3 1/2" RUBBER W/ 8" FLANGE
24	2035-05004	R37 ABD1 SHAKER ROLLER
12	2035-04001	TAPERED NOSE CONE
24	2035-03001	R11A1
Ø	2035-03000	R11A1
12	2035-H50M14R1E4X	PRIMARY
9	2035-H50M12R1E4X	SECONDARY
2	2035-H45M10RBSX	CROSS
6	30025-013	CENTER BLADE 14" EXTENDED
6	30051-013	CENTER POINT DIGGER BLADE EXTENDED
4	DSR 2460	COULTER BLADE
4	31011-007	COULTER CAP PROTECTOR
24	1/2-13x2 1/2" FHS HCS	Alloy
18	1/2-13x2" FHS HCS	Alloy
109	1/2-13 SPINLOCK NUT	
2	1/2-13x2 1/2 HHCS	
12	1/2-13x3" HHCS	
12	1/2-13x3 1/2 HHCS	
3	1/2-13x4 HHCS	
2	1/2-13x4 1/2 HHCS	
2	1/2-13x7 1/2 HHCS	
16	1/2-13x1 1/4 HHCS	
8	1/2-13x1 1/2 HHCS	

HYDRAULICS FINISH MATERIALS LIST

BEGINNING DATE
END DATE

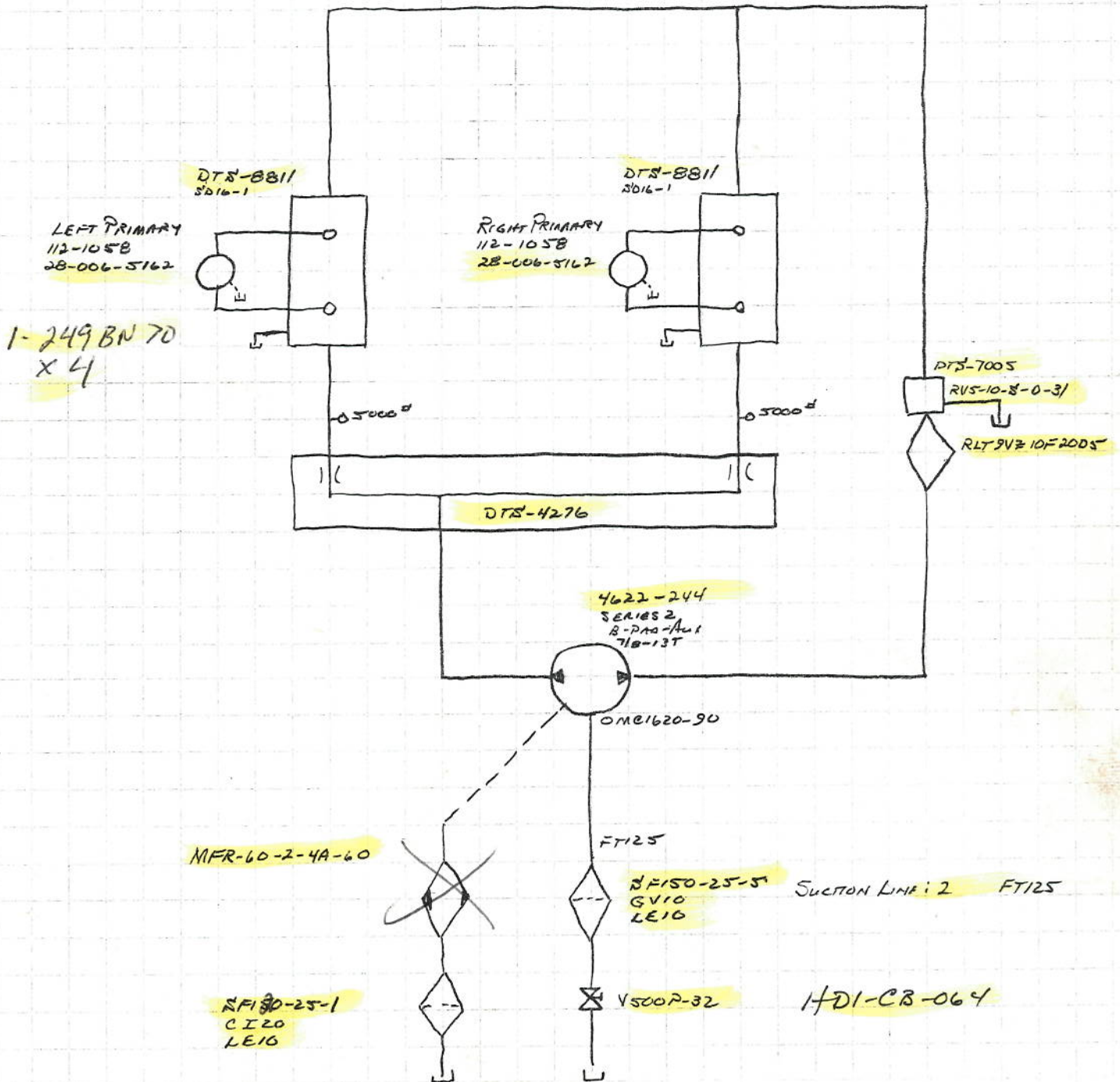
PROJECT NO.

QTY	PART NUMBER	DESCRIPTION
2	5/8-11x11" HHCS	
28	5/8-11x6" HHCS	
15	5/8-11x5 1/2" HHCS	
6	5/8-11x5" HHCS	
4	5/8-11x4" HHCS	
80	5/8-11x3 1/2" HHCS	
2	5/8-11x3 1/2" FHSHCS	ALLOY
137	5/8-11 SPINLOCK NUT	
18	5/8 FLAT WASHER	
lot	15W40 OIL	
4qt	80W90 OIL	
1	2002-17	SERIAL # PLATE
6	2002-06	SMALL LENS
1	2002-05	LARGE LENS
2	2002-04	APE LOGO
6	2002-07	MOVING PARTS HAZARD
2	2002-16	WARNING MOVING PARTS
4	2002-10	SW401 ROTATING PART HAZARD
2	2002-08	SW201 HIGH PRESS FLUID
1	2002-15	SW101 ROTATING DRIVE LINE
1	2002-01	SLOW MOVING SIGN
1		P.T.O. SHAFT 14015548 14015548
3	2035-0700	1" ROLLER STAND OFF
6	2035-06002	5 1/4" STEEL CARRIER
1	2002-03	DEPTH SCALE DECAL
1	40006-012	DEPTH GAUGE
2		200-5500 U-JOINT
1		101-5520 YOKE
1		102-5521 YOKE

PULL TYPE WINDOWER

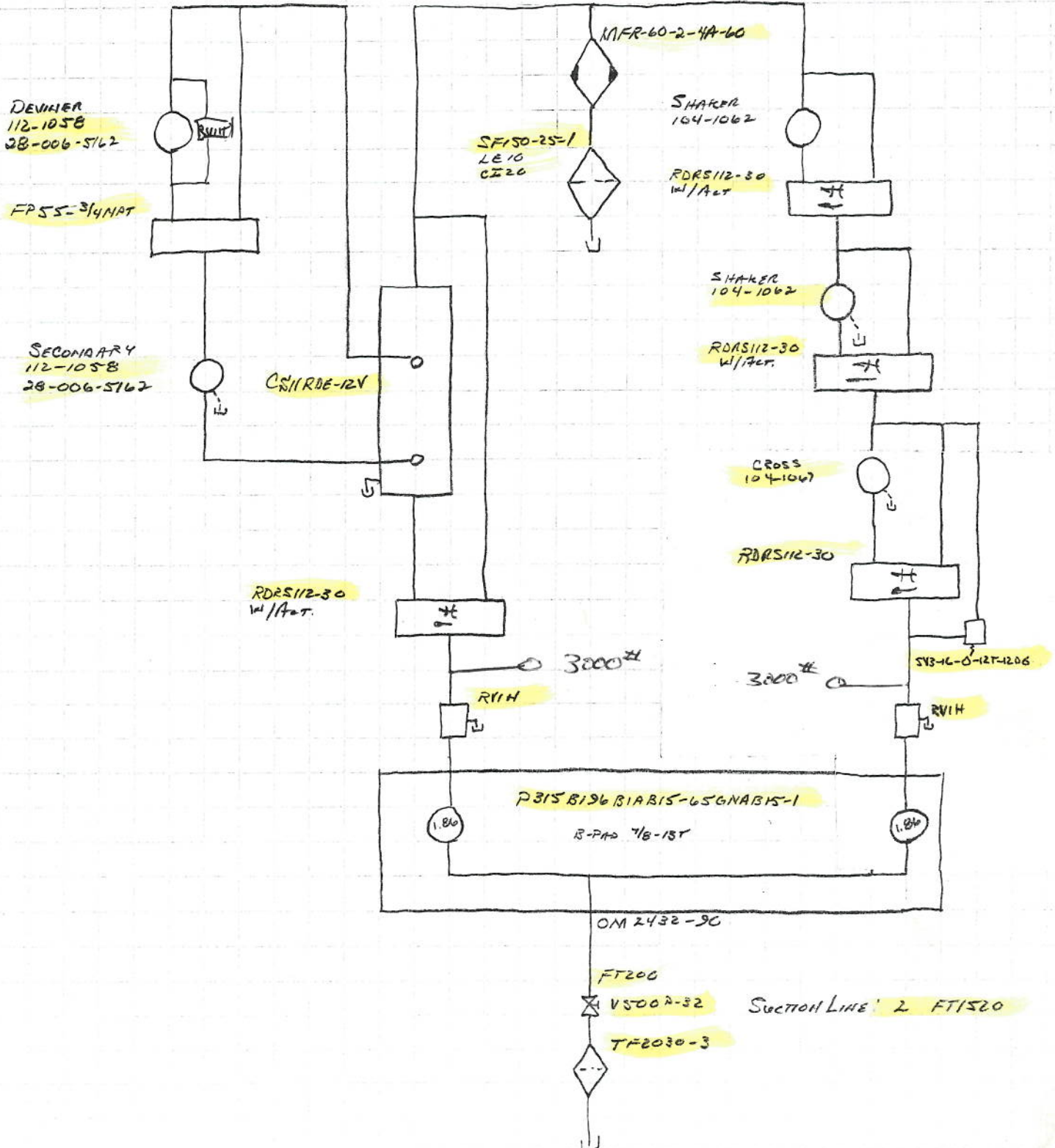
3/27/67
#07018
TUPLING
BRATKI

027506
Detail 2



PULL TYPE WINDROWER

3/22/07
07018
TUPLING
6RATW



3/27/07
#07018
TUPPING,
BRATWI

PULLTYPE WINDROWER

