

IQAN T0C8

Serial number: 1103
 Hardware version: 4.00
 Software version: 3.56

B/27/03
 #03215
 PETER SSK/ Seed Form
 LRS PH-WMR/TMIR

Alarm out	A	C1 37
-----------	---	-------

Current out

A	C1 17/31
+RET	C1 18
-RET	C1 32
B	C1 19/33
+RET	C1 20
-RET	C1 34

Digital out

A	C1 21
B	C1 22
C	C1 35
D	C1 36
E	C1 23
F	C1 24

PWM out

Pin 4	A	C1 21/22	21- Valve Pin "A" - White
Control	A		
Roll	B	C1 35/36	35- Valve Pin "A" - Blue/White
Control	B		
Roll	B	C1 35/36	36- Valve Pin "A" - Orange/Black
Control	C	C1 23/24	23- Valve Pin "A" - Black 023
Control	C		
Roll	B	C1 35/36	34- Valve Pin "A" - Orange 024
Control	C		

Voltage in

SENSOR #1	A	C1 3
Roll SENSOR SENSE - GREEN	B	C1 6
SENSOR #2	C	C1 9
Roll SENSOR SENSE - WHITE	D	C1 12
Roll SENSOR SENSE - WHITE	E	C1 15
Roll SENSOR SENSE - WHITE	F	C1 17
Roll SENSOR SENSE - WHITE	G	C1 18
Roll SENSOR SENSE - WHITE	H	C1 10
Roll SENSOR SENSE - WHITE	I	C1 27
Roll SENSOR SENSE - WHITE	J	C1 41

Digital in

A	C1 3
B	C1 6
C	C1 9
D	C1 12
E	C1 15
F	C1 17
G	C1 18
H	C1 10
I	C1 27
J	C1 41

Frequency in

A	C1 3
B	C1 6
C	C1 9
D	C1 12
E	C1 15
F	C1 17
G	C1 18
H	C1 10
I	C1 27
J	C1 41

Power

-BAT	C1 15
+BAT	C1 28
-VREF-A	C1 4
+VREF-A	C1 2
-VREF-B	C1 13
+VREF-B	C1 11
-BAT2	C1 29
+BAT2	C1 42

RS-232

RX	C1 25
TX	C1 26
DSR	C1 39
RES	C1 40
GND	C1 38

Pin 4 SENSOR SENSE - WHITE - SENSOR #1

Roll SENSOR SENSE - GREEN - SENSOR #1

Roll SENSOR SENSE - WHITE - SENSOR #2

Roll SENSOR SENSE - WHITE - SENSOR #2

Roll SENSOR SENSE - WHITE - SENSOR #2

Roll SENSOR SENSE - WHITE - SENSOR #2

Roll SENSOR SENSE - WHITE - SENSOR #2

Roll SENSOR SENSE - WHITE - SENSOR #2

Roll SENSOR SENSE - WHITE - SENSOR #2

Roll SENSOR SENSE - WHITE - SENSOR #2

Roll SENSOR SENSE - WHITE - SENSOR #2

Roll SENSOR SENSE - WHITE - SENSOR #2

Roll SENSOR SENSE - WHITE - SENSOR #2

Roll SENSOR SENSE - WHITE - SENSOR #2

Roll SENSOR SENSE - WHITE - SENSOR #2

Roll SENSOR SENSE - WHITE - SENSOR #2

Roll SENSOR SENSE - WHITE - SENSOR #2

Roll SENSOR SENSE - WHITE - SENSOR #2

Roll SENSOR SENSE - WHITE - SENSOR #2

Roll SENSOR SENSE - WHITE - SENSOR #2

Roll SENSOR SENSE - WHITE - SENSOR #2

Roll SENSOR SENSE - WHITE - SENSOR #2

Roll SENSOR SENSE - WHITE - SENSOR #2

Roll SENSOR SENSE - WHITE - SENSOR #2

Roll SENSOR SENSE - WHITE - SENSOR #2

Roll SENSOR SENSE - WHITE - SENSOR #2

Roll SENSOR SENSE - WHITE - SENSOR #2

Roll SENSOR SENSE - WHITE - SENSOR #2

Roll SENSOR SENSE - WHITE - SENSOR #2

Roll SENSOR SENSE - WHITE - SENSOR #2

Roll SENSOR SENSE - WHITE - SENSOR #2

Roll SENSOR SENSE - WHITE - SENSOR #2

Roll SENSOR SENSE - WHITE - SENSOR #2

Roll SENSOR SENSE - WHITE - SENSOR #2

Roll SENSOR SENSE - WHITE - SENSOR #2

Roll SENSOR SENSE - WHITE - SENSOR #2

Roll SENSOR SENSE - WHITE - SENSOR #2

SENSOR #2 - Blue - Direct To C1:5 - 5
 SENSOR #2 - Brown To Auto ON/OFF SWITCH - Red 7 5 (4) (CMB)

To 9 Pin DB-9 - Pin #5 (Green)

To 9 Pin DB-9 - Pin #7 (Green)

To 9 Pin DB-9 - Pin #6 & Pin #1 (Brown) Jumper

To 9 Pin DB-9 - Pin #3 (White)

To 9 Pin DB-9 - Pin #2 (Red)

SENSOR #1 + - Red

SENSOR #1 - - Green

SENSOR #1 - - Red 2B - 10K Jumper

Ground To Engine Block - Black 15

A.H. RPM SENSOR SIGNAL - GREEN (605V) (CMB)

A.H. RPM SENSOR SIGNAL - GREEN (605V) (CMB)

A.H. RPM SENSOR SIGNAL - GREEN (605V) (CMB)

A.H. RPM SENSOR SIGNAL - GREEN (605V) (CMB)

A.H. RPM SENSOR SIGNAL - GREEN (605V) (CMB)

A.H. RPM SENSOR SIGNAL - GREEN (605V) (CMB)

A.H. RPM SENSOR SIGNAL - GREEN (605V) (CMB)

A.H. RPM SENSOR SIGNAL - GREEN (605V) (CMB)

A.H. RPM SENSOR SIGNAL - GREEN (605V) (CMB)

A.H. RPM SENSOR SIGNAL - GREEN (605V) (CMB)

A.H. RPM SENSOR SIGNAL - GREEN (605V) (CMB)

A.H. RPM SENSOR SIGNAL - GREEN (605V) (CMB)

A.H. RPM SENSOR SIGNAL - GREEN (605V) (CMB)

A.H. RPM SENSOR SIGNAL - GREEN (605V) (CMB)

A.H. RPM SENSOR SIGNAL - GREEN (605V) (CMB)

A.H. RPM SENSOR SIGNAL - GREEN (605V) (CMB)

A.H. RPM SENSOR SIGNAL - GREEN (605V) (CMB)

A.H. RPM SENSOR SIGNAL - GREEN (605V) (CMB)

A.H. RPM SENSOR SIGNAL - GREEN (605V) (CMB)

A.H. RPM SENSOR SIGNAL - GREEN (605V) (CMB)

A.H. RPM SENSOR SIGNAL - GREEN (605V) (CMB)

A.H. RPM SENSOR SIGNAL - GREEN (605V) (CMB)

A.H. RPM SENSOR SIGNAL - GREEN (605V) (CMB)

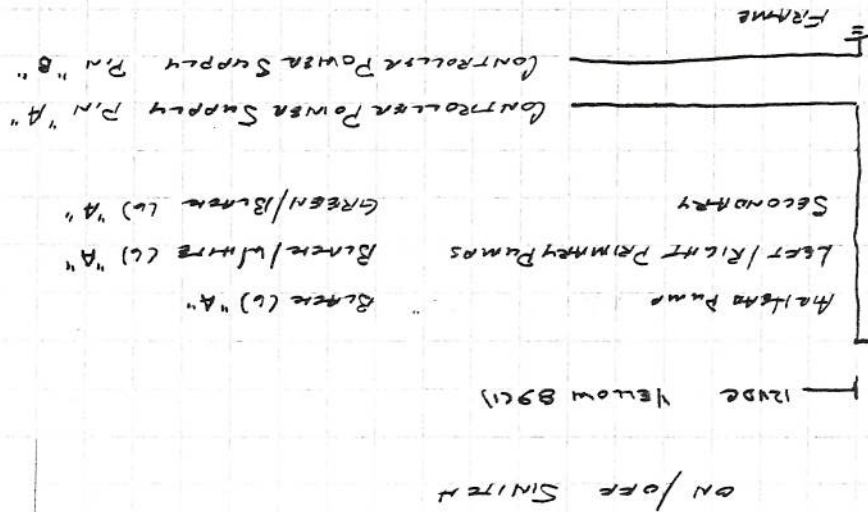
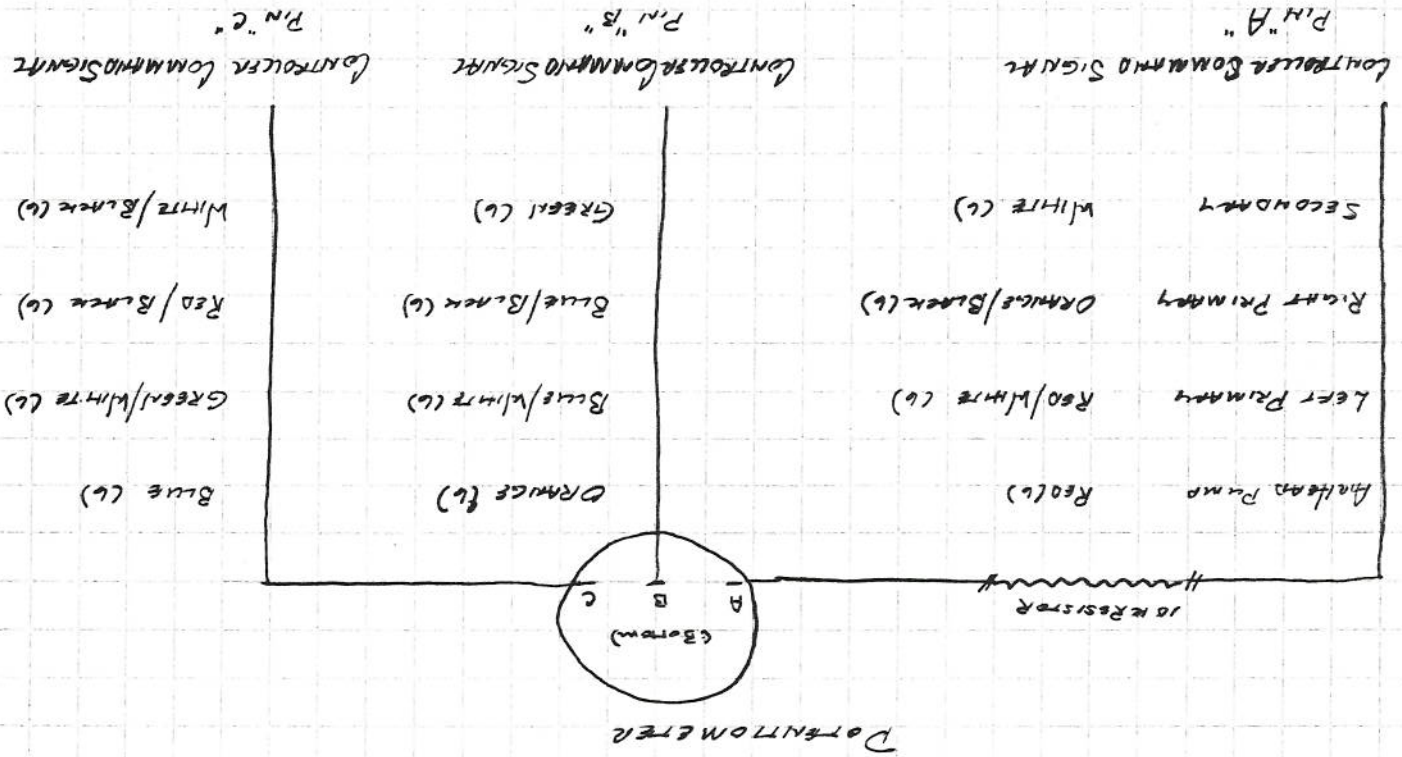
A.H. RPM SENSOR SIGNAL - GREEN (605V) (CMB)

A.H. RPM SENSOR SIGNAL - GREEN (605V) (CMB)

A.H. RPM SENSOR SIGNAL - GREEN (605V) (CMB)

A.H. RPM SENSOR SIGNAL - GREEN (605V) (CMB)

A.H. RPM SENSOR SIGNAL - GREEN (605V) (CMB)



Electronic Hydro Controller
Level Pump

ON/OFF SWITCH

12VDC Yellow 89C11

Main Pump
Left/Right Primary Pumps
Secondary

Controller Power Supply P.N. "A"

Controller Power Supply P.N. "B"

FRAME

8/8/03
#03211
Who Seen Frames
RESPN w/ 50' A.H. - M. J. M. J.

Electronic Proportional Displacement Control

Model Code EE, EG, EL in Position 18, 19

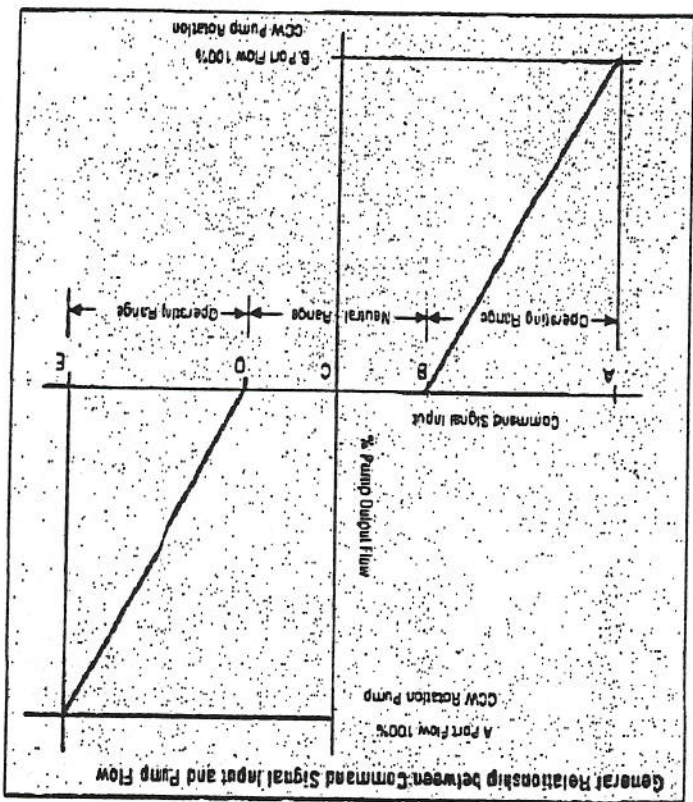
- Mating Connector Kit: Eaton P/N 990752-000
 Recommended: Wire Size 18-18 AWG,
 Cable Dia. 2.03 - 2.80 mm
 Kit includes:
 - 3-pin Command Input Signal Connector
 - Mating Connectors for 2-pin Power Supply Connector

- *Design/Part
 Mating Connector Part Numbers:
 Recommended: Wire Size 18-18 AWG,
 Cable Dia. 2.03 - 2.80 mm
 Reference Source: Power Standard Electronics
 1-800-257-6818
 1) Power Supply 2-pin connector
 Connector P/N 1205 2541
 Terminal P/N 1204 8074
 TPA P/N 1206 2524
 Cable Seal 1204 8086
 2) Command Input Signal 3 Pin Connector
 Connector P/N 121 0220
 Terminal P/N 1204 8074
 TPA P/N 1205 2645
 Cable Seal 1204 8086

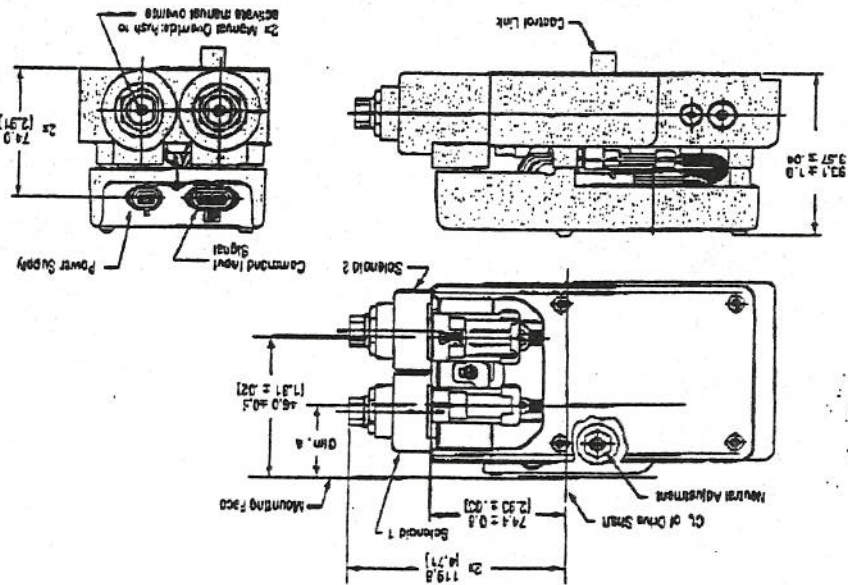
Note: In order to assure the most reliable installation and operation of any electronic control, proper installation methods should be followed with respect to interconnection wiring harness, command and signal devices, fusing, and input power switching. Proper care should be taken to prevent damage to all electrical and electronic components due to abrasion, moving objects, heat, moisture or other environmental hazards. For safety critical applications, Eaton recommends that a switch be installed in line with (-) Battery power to the module so that power may quickly be disconnected in case of emergency. A 2 ampere slow blow fuse should always be installed in the + battery line. It is recommended that during initial start-up and checkout, the machine be placed on jack stands to prevent inadvertent movement of the machine.

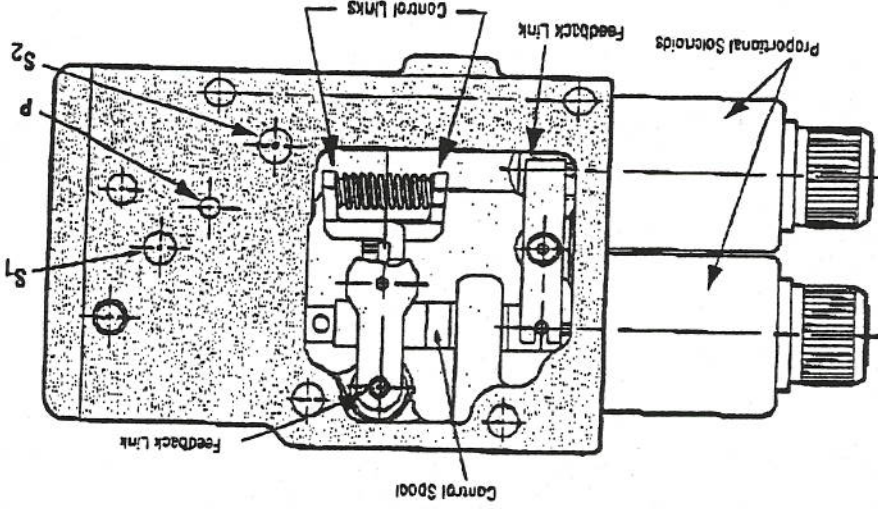
Command Input Signal (max) E	A (max)	B (min)	C	D (min)	1 to B Vdc	±100 mA
					1.5 Vdc	-100 mA
					3.3 Vdc	-7.5 mA
					3.5 Vdc	0 mA
					3.7 Vdc	+4.5 mA
					5.5 Vdc	+20 mA
						+100 mA

* Note: The +20 mA command input signal operates the pump in one direction. The customer has to change the polarity on the -20 mA signal to operate the pump in the opposite direction.



Dimension A	Displacement cm ³ /rev	Dimension A	Displacement cm ³ /rev
41.0	54.4	41.0	54.4
47.0	63.7	47.0	63.7
52.1	75.8	52.1	75.8
52.1	89.2	52.1	89.2
52.1	105.3	52.1	105.3





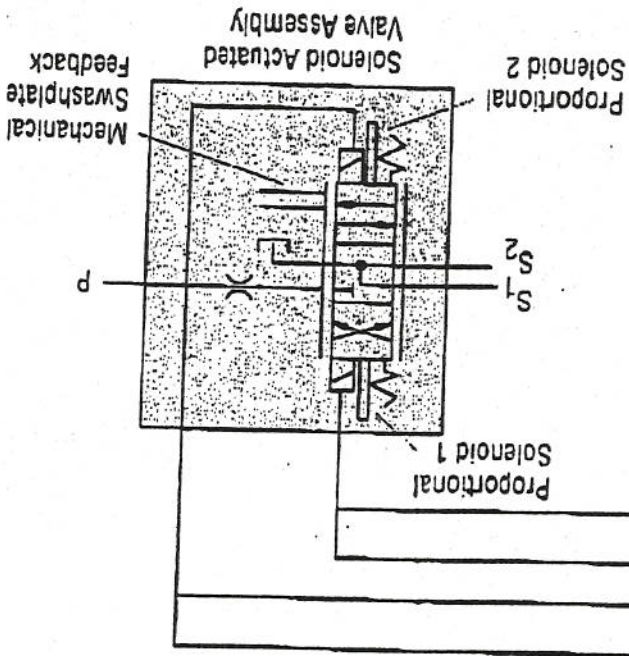
Solenoid Actuated Valve Assembly

Voltage Measurement P.N. "B"
 Neutral 3.4V
 Full Flow 6.1V
 WITH 3.4VDC - SOLID 2 HOURS
 6.1VDC - SOL1 MOVEMENT "IN" Port A Passures
 - SOL2 MOVEMENT "OUT"

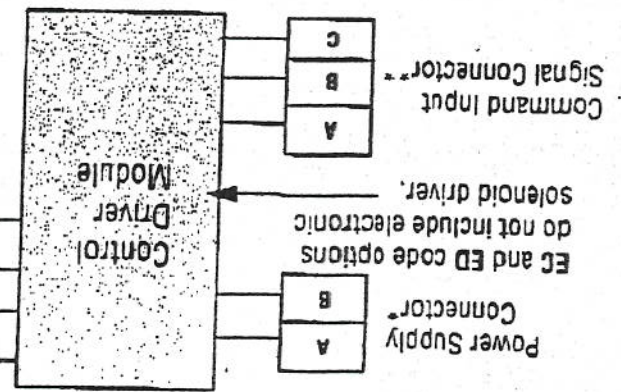
** Command Input Signal Connector

Command Input Signal	Wire Color	Signal
A	Black	Ref Low - 1 Vdc
B	Green	Command (wiper)
C	Red	Ref Hi - 6 Vdc
A	Orange	Loop Return
B	White	Loop In
C	No Connection	Required*
A	Blue	Loop Return
B	White	Loop In
C	No Connection	Required*
A	Blue	Loop Return
B	White	Loop In
C	No Connection	Required*

* Mating connector M1 920762-000 contains plug to be used to test mating and connector.



Note: Customer supplies:
 1A fuse for 24Vdc system
 2A fuse for 12Vdc system



Interface Schematic

Electronic Proportional Displacement Control

Model Code EE, EG, EL in Position 18, 19

Heavy Duty Series 2 Hydrostatic Pump

