

03220

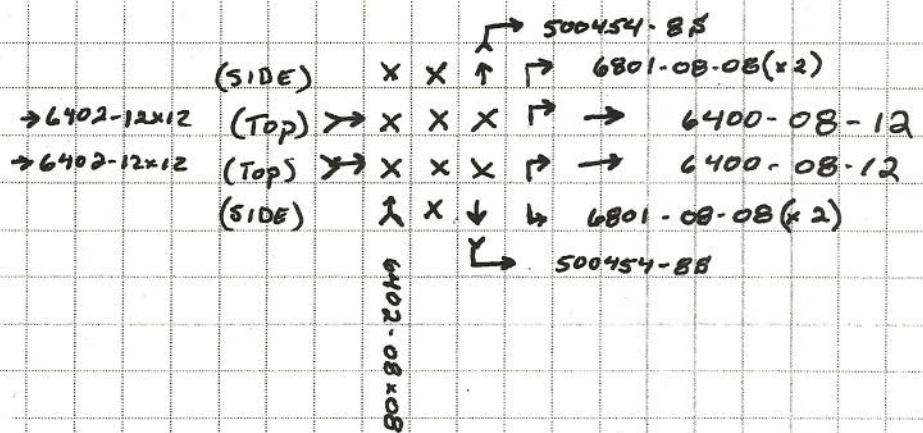
Kitchen Parlors

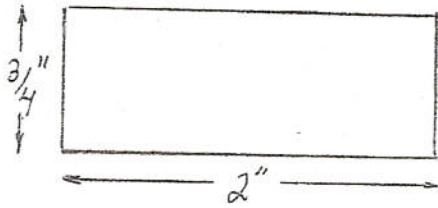
2017-10012
(DTS-0150D)
"GROUND DRIVE MANIFOLD"

- / 1- TPO 04
- / 1- GP-6504-08-08-04
- / 1- 6408-HHP-12
- / 1- 6400-16-16
- / 4- 6400-08-06
- / 1- 6400-08-08
- / 2- 6400-12-12
- / 3- 6400-12-16
- / 1- 6408-HHP-04
- * 1- 6400-06-04 (G.F. GAUGELINE
(FOR TRANSDUCER))
- * 1- 6405-08-04
- 1- 60257 SWABBER
- 1- 6404-04-04
- / 3- 6400-L-16-16

2017-10000
(CDC-0126)
"STEERING MANIFOLD"

- 4- 6801-08-08
- 2- 6400-08-08
- 2- 500454-BS
- 1- 6402-08-08
- 9- 6408-HHP-08
- 2- 6402-12-12
- 2- 6400-08-12



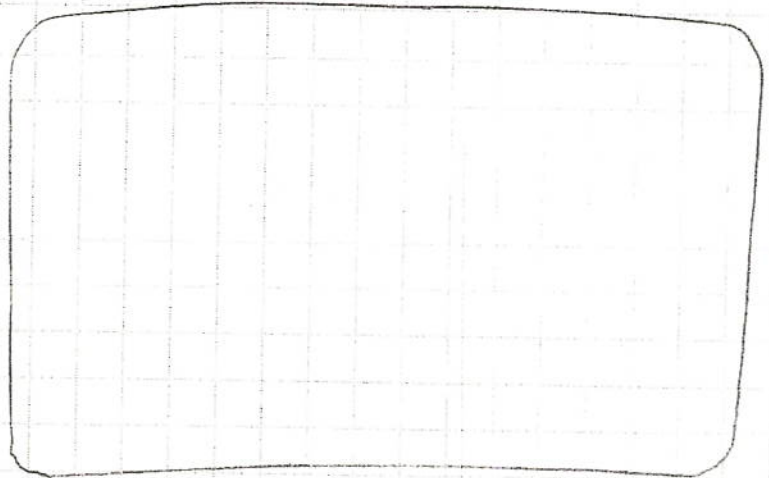


WHITE LETTERS / BLACK BACKGROUND

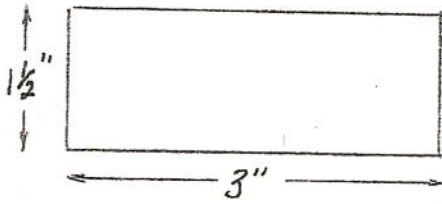
- | | |
|----------------------------------|------------------------------|
| 1 - PRIMARY CHARGE PRESSURE | 2 - LEFT STAR |
| 1 - SECONDARY CHARGE PRESSURE | 2 - RIGHT STAR |
| 1 - AIR HEAD CHARGE PRESSURE | 2 - RIGHT STAR DISTRIBUTORS |
| 1 - BRAKE CHARGE PRESSURE | 2 - CROSS |
| 1 - GROUND DRIVE CHARGE PRESSURE | 1 - SIDE |
| 1 - AIR HEAD | 2 - BIN FILL |
| 2 - GROUND DRIVE | 2 - BIN UNLOAD |
| 1 - STEERING | 1 - AIR KNIFE |
| 1 - LEFT PRIMARY | 1 - AIR KNIFE CHARGE |
| 1 - RIGHT PRIMARY | 1 - AIR HEAD FEED |
| 1 - SECONDARY | 1 - AIR HEAD DISCHARGE |
| 1 - LEFT STAR REVERSE | 1 - CROSS DISTRIBUTORS |
| 1 - RIGHT STAR REVERSE | 1 - BIN BYPASS |
| | 1 - RIGHT STAR DIST. REVERSE |



Black w/ WHITE LETTERS

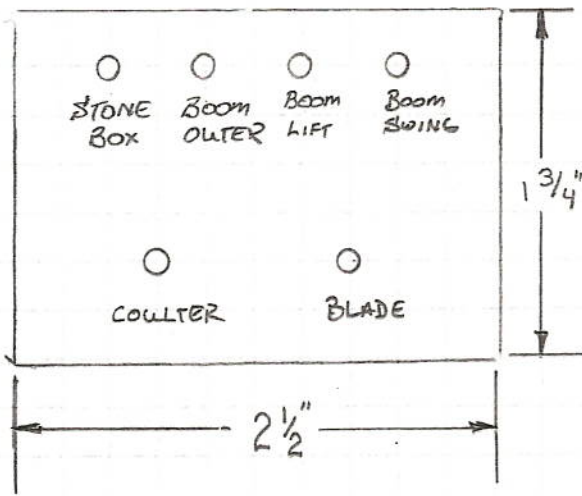


BLACK - SOLID PIECE
(NO "cut out")
THIS IS ACTUAL SIZE



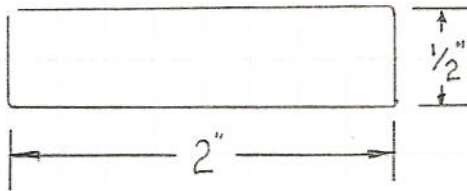
- WHITE LETTERS / BLACK BACKGROUND
- MAKE LETTERS AS LARGE AS SPACE ALLOWS FOR.

- | | |
|-------------------------|-----------------------------|
| 1 - PRIMARY CHARGE | 1 - LEFT STAR |
| 1 - SECONDARY CHARGE | 1 - RIGHT STAR |
| 1 - AIR HEAD CHARGE | 1 - RIGHT STAR DISTRIBUTORS |
| 1 - BRAKE CHARGE | 1 - CROSS |
| 1 - GROUND DRIVE CHARGE | 1 - SIDE |
| 1 - AIR HEAD | 1 - BIN FILL |
| 1 - GROUND DRIVE | 1 - BIN UNLOAD |
| 1 - STEERING | 1 - AIR KNIFE |
| 1 - LEFT PRIMARY | 1 - AIR KNIFE CHARGE |
| 1 - RIGHT PRIMARY | |
| 1 - SECONDARY | |



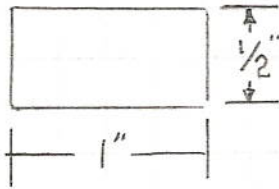
BLACK LABEL W/ WHITE LETTERS

QTY - 1



QTY GREEN LABEL W/ WHITE LETTERS

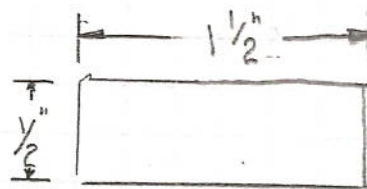
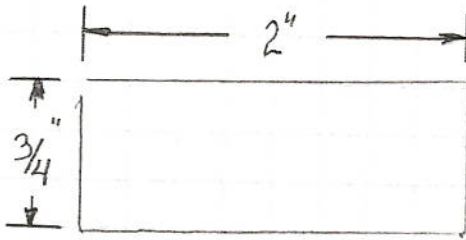
- / - STEERING
- / - REVERSING
- / - TRUCK LIGHTS



GREEN LABEL W/ WHITE LETTERS

- / - CENTERING
- / - SECONDARY
- / - LEFT
- / - RIGHT
- / - RIGHT PRIM
- / - LEFT PRIM
- / - FORWARD
- / - BACK

WHITE LABEL W/BLACK LETTERS



- 3- AIRKNIFE
- 3- SECONDARY CHARGE
- 3- AIRKNIFE RETURN
- 3- AIRKNIFE CASE DRAIN
- 3- AIRHEAD RETURN
- 3- AIRHEAD CASE DRAIN
- 3- PRIMARY CHARGE

- 3- CROSS
- 3- CROSS DIST.
- 3- A.H. FEED
- 3- A.H. DISCHARGE
- 3- STONE
- 3- RIGHT STAR
- 3- RT STAR DIST
- 3- STEEL ROLL
- 3- BIN FILL DIST
- 3- BIN FILL
- 3- TRASH ROLL
- 3- BIN UNLOAD
- 3- BIN BYPASS
- 3- BOOM
- 3- LEFT STAR
- 3- A.H. CLEANER
- 3- BOOM UP/DOWN
- 3- BOOM OUTER
- 3- BOOM SWING
- 3- BLADE
- 3- COULTER
- 3- STONE BOX
- 3- RT SHAKER
- 3- LT SHAKER
- 3- REAR STEER
- 3- A.H. LEVEL
- 3- COOLER
- 3- RT FLUSH
- 3- LT FLUSH

Machine # _____

20049-019	R501000	Roller	
20050-019	R502500	2 1/2" Roller w/5" Flange	
20051-019	R51LR2	5 1/4" Steel Carrier	
20052-019	R51NR2	5 1/4" Steel Carrier	
20053-019	R51SLLB2	4 1/2" Roller w/5" Flange	
20054-019	R5FBRRCU2	3 1/2" Rubber Roller w/5" Flange	
20055-019	R5FBRS2	3 1/2" Nose Cone Roller	
20056-019	R5FBRSMHUBL2	Nose Cone Roller - Tapered	
20057-019	R5SFBRRC	3 1/2" Steel Narrow w/5" Flange	
20058-019	R5SFBRW2	3 1/2" Steel Roller	
20059-019	R60X2	6" Steel Carrier	
20060-019	R61NR2	6" Flange Roller	
20061-019	R8FBRRCU2	3 1/2" Rubber Roller s/8" Flange	
20062-019	RBRRU2	3 1/2" Rubber Roller w/o Flange	
20063-019	SO141562	Standoff (Kryptane)	
20064-019	SR11	Replacement Snap Ring for Roller	
20065-019	SR2	Replacement Snap Ring for Roller	
20066-019	SR3	Replacement Snap Ring for Roller	
20067-019	SS100	Standoff for Green Plastic Roller	
20068-019	SS18	Spacer for Roller (20053-019)	
20069-019	SSR2	Replacement Stub Shaft for Rollers	
20070-019	SSU1	Replacement Stub Shaft for Rollers	
20071-019	2868BD2X	Idler Assy	
20072-019	R39HGGB2	Nose Roller	
20073-019	R7F5BR2	Roller	
20074-019	R342540NR	Roller	

Machine # _____

20049-019	R501000	Roller	
20050-019	R502500	2 1/2" Roller w/5" Flange	
20051-019	R51LR2	5 1/4" Steel Carrier	
20052-019	R51NR2	5 1/4" Steel Carrier	
20053-019	R51SLLB2	4 1/2" Roller w/5" Flange	
20054-019	R5FBRRCU2	3 1/2" Rubber Roller w/5" Flange	
20055-019	R5FBRS2	3 1/2" Nose Cone Roller	
20056-019	R5FBRSMLHUBL2	Nose Cone Roller - Tapered	
20057-019	R5SFBRRC	3 1/2" Steel Narrow w/5" Flange	
20058-019	R5SFBRW2	3 1/2" Steel Roller	
20059-019	R60X2	6" Steel Carrier	
20060-019	R61NR2	6" Flange Roller	
20061-019	R8FBRRCU2	3 1/2" Rubber Roller s/8" Flange	
20062-019	RBRRU2	3 1/2" Rubber Roller w/o Flange	
20063-019	SO141562	Standoff (Kryptane)	
20064-019	SR11	Replacement Snap Ring for Roller	
20065-019	SR2	Replacement Snap Ring for Roller	
20066-019	SR3	Replacement Snap Ring for Roller	
20067-019	SS100	Standoff for Green Plastic Roller	
20068-019	SS18	Spacer for Roller (20053-019)	
20069-019	SSR2	Replacement Stub Shaft for Rollers	
20070-019	SSU1	Replacement Stub Shaft for Rollers	
20071-019	2868BD2X	Idler Assy	
20072-019	R39HGGB2	Nose Roller	
20073-019	R7F5BR2	Roller	
20074-019	R342540NR	Roller	

Machine # _____

20049-019	R501000	Roller	
20050-019	R502500	2 1/2" Roller w/5" Flange	
20051-019	R51LR2	5 1/4" Steel Carrier	
20052-019	R51NR2	5 1/4" Steel Carrier	
20053-019	R51SLLB2	4 1/2" Roller w/5" Flange	
20054-019	R5FBRRCU2	3 1/2" Rubber Roller w/5" Flange	
20055-019	R5FBRS2	3 1/2" Nose Cone Roller	
20056-019	R5FBRSMLHUBL2	Nose Cone Roller - Tapered	
20057-019	R5SFBRRC	3 1/2" Steel Narrow w/5" Flange	
20058-019	R5SFBRW2	3 1/2" Steel Roller	
20059-019	R60X2	6" Steel Carrier	
20060-019	R61NR2	6" Flange Roller	
20061-019	R8FBRRCU2	3 1/2" Rubber Roller s/8" Flange	
20062-019	RBRRU2	3 1/2" Rubber Roller w/o Flange	
20063-019	SO141562	Standoff (Kryptane)	
20064-019	SR11	Replacement Snap Ring for Roller	
20065-019	SR2	Replacement Snap Ring for Roller	
20066-019	SR3	Replacement Snap Ring for Roller	
20067-019	SS100	Standoff for Green Plastic Roller	
20068-019	SS18	Spacer for Roller (20053-019)	
20069-019	SSR2	Replacement Stub Shaft for Rollers	
20070-019	SSU1	Replacement Stub Shaft for Rollers	
20071-019	2868BD2X	Idler Assy	
20072-019	R39HGGB2	Nose Roller	
20073-019	R7F5BR2	Roller	
20074-019	R342540NR	Roller	

Machine # _____

20049-019	R501000	Roller	
20050-019	R502500	2 1/2" Roller w/5" Flange	
20051-019	R51LR2	5 1/4" Steel Carrier	
20052-019	R51NR2	5 1/4" Steel Carrier	
20053-019	R51SLLB2	4 1/2" Roller w/5" Flange	
20054-019	R5FBRRUC2	3 1/2" Rubber Roller w/5" Flange	
20055-019	R5FBRS2	3 1/2" Nose Cone Roller	
20056-019	R5FBRSMLHUBL2	Nose Cone Roller - Tapered	
20057-019	R5SFBRRC	3 1/2" Steel Narrow w/5" Flange	
20058-019	R5SFBRW2	3 1/2" Steel Roller	
20059-019	R60X2	6" Steel Carrier	
20060-019	R61NR2	6" Flange Roller	
20061-019	R8FBRRUC2	3 1/2" Rubber Roller s/8" Flange	
20062-019	RBRRU2	3 1/2" Rubber Roller w/o Flange	
20063-019	SO141562	Standoff (Kryptane)	
20064-019	SR11	Replacement Snap Ring for Roller	
20065-019	SR2	Replacement Snap Ring for Roller	
20066-019	SR3	Replacement Snap Ring for Roller	
20067-019	SS100	Standoff for Green Plastic Roller	
20068-019	SS18	Spacer for Roller (20053-019)	
20069-019	SSR2	Replacement Stub Shaft for Rollers	
20070-019	SSU1	Replacement Stub Shaft for Rollers	
20071-019	2868BD2X	Idler Assy	
20072-019	R39HGGB2	Nose Roller	
20073-019	R7F5BR2	Roller	
20074-019	R342540NR	Roller	

Machine # _____

New Number Old Number Description Quantity

Rollers

20000-019	10079	4" Green Plastic Roller	
20001-019	10080	5" Green Plastic Roller	
20002-019	106906	Roller Scraper RH	
20003-019	106907	Roller Scraper LH	
20004-019	107057	Replacement Bearing	
20005-019	107058	Replacement Bearing	
20006-019	107506	5" Rubber Tire Roller	
20007-019	107508	3 1/2" Rubber Narrow w/5" Flange	
20008-019	107510	3 1/2" Rubber Roller w/o Flange	
20009-019	107511	3 1/2" Rubber Roller w/5" Flange	
20010-019	107513	3 1/2" Rubber Roller w/8" Flange	
20011-019	107562	3 1/2" Steel Roller w/o Flange	
20012-019	R5FBRSU2	3 1/2" Steel Roller w/5" Flange	
20013-019	107609	4" Steel Roller (short)	
20014-019	107615	Cone Roller	
20015-019	107622	4" Steel Roller (tall)	
20016-019	2945BE	4" Rubber Roller	
20017-019	2950BE	5" Rubber Roller	
20018-019	2955BE	5" Rubber Roller	
20019-019	762	1.5" Roller Standoff	
20020-019	821R	Roller	
20021-019	BGAS/U	Replacement Bearing for Rollers	
20022-019	BGAS/W	Replacement Bearing for Rollers	
20023-019	BR42-8V2	8 Pin 42mm Chain Roller	
20024-019	DC150	Dust Cover for Nose Cone Roller	
20025-019	DC190	Dust Cover	
20026-019	H4P156AY1	4 Point 156 Pitch Shaker	
20027-019	H4P45MAD2	4 Point 45mm Sprocket	
20028-019	H4P45MAY1	4 Point 45mm Sprocket	
20029-019	H4P50MAD2	4 Point 50mm Shaker	
20030-019	HR21MAY1	3 Point Shaker	
20031-019	NRR	Replacement Seal for Roller	
20032-019	NRS	Replacement Cap for Roller	
20033-019	R11AY1	4" Steel Carrier	
20034-019	R12AY1	4 3/4" Steel Carrier Roller	
20035-019	R16W1	6" Steel Carrier	
20036-019	R25BRR2	2 1/2" Steel Roller w/o Flange	
20037-019	R25DNCR2	6 1/2" Steel Roller w/9 1/2" Flange	
20038-019	R25NS2	3 3/4" Taper Steel Roller	
20039-019	R25SNS2	2 1/2" Taper Roller w/4 3/4" Flange	
20040-019	R27AAD2	2 3/4" Steel Idler	
20041-019	R352500	3 1/2" Roller w/o Flange (Kryptane)	
20042-019	R352550	3 1/2" Roller w/5" Flange (Kryptane)	
20043-019	R352580	Roller	
20044-019	R37ABD1	4" Vibrator Roller	
20045-019	R37AUAB1	4" Vibrator Roller	
20046-019	R401000	Roller	
20047-019	R41LSD2	4" Steel Carrier	
20048-019	R4FBRSU2	2 1/2" Steel Roller w/4" Flange	

Machine # _____

New Number	Old Number	Description	Quantity
Rollers			
20000-019	10079	4" Green Plastic Roller	
20001-019	10080	5" Green Plastic Roller	
20002-019	106906	Roller Scraper RH	
20003-019	106907	Roller Scraper LH	
20004-019	107057	Replacement Bearing	
20005-019	107058	Replacement Bearing	
20006-019	107506	5" Rubber Tire Roller	
20007-019	107508	3 1/2" Rubber Narrow w/5" Flange	
20008-019	107510	3 1/2" Rubber Roller w/o Flange	
20009-019	107511	3 1/2" Rubber Roller w/5" Flange	
20010-019	107513	3 1/2" Rubber Roller w/8" Flange	
20011-019	107562	3 1/2" Steel Roller w/o Flange	
20012-019	R5FBRSU2	3 1/2" Steel Roller w/5" Flange	
20013-019	107609	4" Steel Roller (short)	
20014-019	107615	Cone Roller	
20015-019	107622	4" Steel Roller (tall)	
20016-019	2945BE	4" Rubber Roller	
20017-019	2950BE	5" Rubber Roller	
20018-019	2955BE	5" Rubber Roller	
20019-019	762	1.5" Roller Standoff	
20020-019	821R	Roller	
20021-019	BGAS/U	Replacement Bearing for Rollers	
20022-019	BGAS/W	Replacement Bearing for Rollers	
20023-019	BR42-8V2	8 Pin 42mm Chain Roller	
20024-019	DC150	Dust Cover for Nose Cone Roller	
20025-019	DC190	Dust Cover	
20026-019	H4P156AY1	4 Point 156 Pitch Shaker	
20027-019	H4P45MAD2	4 Point 45mm Sprocket	
20028-019	H4P45MAY1	4 Point 45mm Sprocket	
20029-019	H4P50MAD2	4 Point 50mm Shaker	
20030-019	HR21MAY1	3 Point Shaker	
20031-019	NRR	Replacement Seal for Roller	
20032-019	NRS	Replacement Cap for Roller	
20033-019	R11AY1	4" Steel Carrier	
20034-019	R12AY1	4 3/4" Steel Carrier Roller	
20035-019	R16W1	6" Steel Carrier	
20036-019	R25BRR2	2 1/2" Steel Roller w/o Flange	
20037-019	R25DNCR2	6 1/2" Steel Roller w/9 1/2" Flange	
20038-019	R25NS2	3 3/4" Taper Steel Roller	
20039-019	R25SNS2	2 1/2" Taper Roller w/4 3/4" Flange	
20040-019	R27AAD2	2 3/4" Steel Idler	
20041-019	R352500	3 1/2" Roller w/o Flange (Kryptane)	
20042-019	R352550	3 1/2" Roller w/5" Flange (Kryptane)	
20043-019	R352580	Roller	
20044-019	R37ABD1	4" Vibrator Roller	
20045-019	R37AUAB1	4" Vibrator Roller	
20046-019	R401000	Roller	
20047-019	R41LSD2	4" Steel Carrier	
20048-019	R4FBRSU2	2 1/2" Steel Roller w/4" Flange	

Machine # _____

New Number Old Number Description Quantity

Rollers

20000-019	10079	4" Green Plastic Roller	
20001-019	10080	5" Green Plastic Roller	
20002-019	106906	Roller Scraper RH	
20003-019	106907	Roller Scraper LH	
20004-019	107057	Replacement Bearing	
20005-019	107058	Replacement Bearing	
20006-019	107506	5" Rubber Tire Roller	
20007-019	107508	3 1/2" Rubber Narrow w/5" Flange	
20008-019	107510	3 1/2" Rubber Roller w/o Flange	
20009-019	107511	3 1/2" Rubber Roller w/5" Flange	
20010-019	107513	3 1/2" Rubber Roller w/8" Flange	
20011-019	107562	3 1/2" Steel Roller w/o Flange	
20012-019	R5FBRSU2	3 1/2" Steel Roller w/5" Flange	
20013-019	107609	4" Steel Roller (short)	
20014-019	107615	Cone Roller	
20015-019	107622	4" Steel Roller (tall)	
20016-019	2945BE	4" Rubber Roller	
20017-019	2950BE	5" Rubber Roller	
20018-019	2955BE	5" Rubber Roller	
20019-019	762	1.5" Roller Standoff	
20020-019	821R	Roller	
20021-019	BGAS/U	Replacement Bearing for Rollers	
20022-019	BGAS/W	Replacement Bearing for Rollers	
20023-019	BR42-8V2	8 Pin 42mm Chain Roller	
20024-019	DC150	Dust Cover for Nose Cone Roller	
20025-019	DC190	Dust Cover	
20026-019	H4P156AY1	4 Point 156 Pitch Shaker	
20027-019	H4P45MAD2	4 Point 45mm Sprocket	
20028-019	H4P45MAY1	4 Point 45mm Sprocket	
20029-019	H4P50MAD2	4 Point 50mm Shaker	
20030-019	HR21MAY1	3 Point Shaker	
20031-019	NRR	Replacement Seal for Roller	
20032-019	NRS	Replacement Cap for Roller	
20033-019	R11AY1	4" Steel Carrier	
20034-019	R12AY1	4 3/4" Steel Carrier Roller	
20035-019	R16W1	6" Steel Carrier	
20036-019	R25BRR2	2 1/2" Steel Roller w/o Flange	
20037-019	R25DNCR2	6 1/2" Steel Roller w/9 1/2" Flange	
20038-019	R25NS2	3 3/4" Taper Steel Roller	
20039-019	R25SNS2	2 1/2" Taper Roller w/4 3/4" Flange	
20040-019	R27AAD2	2 3/4" Steel Idler	
20041-019	R352500	3 1/2" Roller w/o Flange (Kryptane)	
20042-019	R352550	3 1/2" Roller w/5" Flange (Kryptane)	
20043-019	R352580	Roller	
20044-019	R37ABD1	4" Vibrator Roller	
20045-019	R37AUAB1	4" Vibrator Roller	
20046-019	R401000	Roller	
20047-019	R41LSD2	4" Steel Carrier	
20048-019	R4FBRSU2	2 1/2" Steel Roller w/4" Flange	

Machine # _____

New Number	Old Number	Description	Quantity
Rollers			
20000-019	10079	4" Green Plastic Roller	
20001-019	10080	5" Green Plastic Roller	
20002-019	106906	Roller Scraper RH	
20003-019	106907	Roller Scraper LH	
20004-019	107057	Replacement Bearing	
20005-019	107058	Replacement Bearing	
20006-019	107506	5" Rubber Tire Roller	
20007-019	107508	3 1/2" Rubber Narrow w/5" Flange	
20008-019	107510	3 1/2" Rubber Roller w/o Flange	
20009-019	107511	3 1/2" Rubber Roller w/5" Flange	
20010-019	107513	3 1/2" Rubber Roller w/8" Flange	
20011-019	107562	3 1/2" Steel Roller w/o Flange	
20012-019	R5FBRSU2	3 1/2" Steel Roller w/5" Flange	
20013-019	107609	4" Steel Roller (short)	
20014-019	107615	Cone Roller	
20015-019	107622	4" Steel Roller (tall)	
20016-019	2945BE	4" Rubber Roller	
20017-019	2950BE	5" Rubber Roller	
20018-019	2955BE	5" Rubber Roller	
20019-019	762	1.5" Roller Standoff	
20020-019	821R	Roller	
20021-019	BGAS/U	Replacement Bearing for Rollers	
20022-019	BGAS/W	Replacement Bearing for Rollers	
20023-019	BR42-8V2	8 Pin 42mm Chain Roller	
20024-019	DC150	Dust Cover for Nose Cone Roller	
20025-019	DC190	Dust Cover	
20026-019	H4P156AY1	4 Point 156 Pitch Shaker	
20027-019	H4P45MAD2	4 Point 45mm Sprocket	
20028-019	H4P45MAY1	4 Point 45mm Sprocket	
20029-019	H4P50MAD2	4 Point 50mm Shaker	
20030-019	HR21MAY1	3 Point Shaker	
20031-019	NRR	Replacement Seal for Roller	
20032-019	NRS	Replacement Cap for Roller	
20033-019	R11AY1	4" Steel Carrier	
20034-019	R12AY1	4 3/4" Steel Carrier Roller	
20035-019	R16W1	6" Steel Carrier	
20036-019	R25BRR2	2 1/2" Steel Roller w/o Flange	
20037-019	R25DNCR2	6 1/2" Steel Roller w/9 1/2" Flange	
20038-019	R25NS2	3 3/4" Taper Steel Roller	
20039-019	R25SNS2	2 1/2" Taper Roller w/4 3/4" Flange	
20040-019	R27AAD2	2 3/4" Steel Idler	
20041-019	R352500	3 1/2" Roller w/o Flange (Kryptane)	
20042-019	R352550	3 1/2" Roller w/5" Flange (Kryptane)	
20043-019	R352580	Roller	
20044-019	R37ABD1	4" Vibrator Roller	
20045-019	R37AUAB1	4" Vibrator Roller	
20046-019	R401000	Roller	
20047-019	R41LSD2	4" Steel Carrier	
20048-019	R4FBRSU2	2 1/2" Steel Roller w/4" Flange	

Machine # _____

New Number Old Number Description Quantity

Rollers

20000-019	10079	4" Green Plastic Roller	
20001-019	10080	5" Green Plastic Roller	
20002-019	106906	Roller Scraper RH	
20003-019	106907	Roller Scraper LH	
20004-019	107057	Replacement Bearing	
20005-019	107058	Replacement Bearing	
20006-019	107506	5" Rubber Tire Roller	
20007-019	107508	3 1/2" Rubber Narrow w/5" Flange	
20008-019	107510	3 1/2" Rubber Roller w/o Flange	
20009-019	107511	3 1/2" Rubber Roller w/5" Flange	
20010-019	107513	3 1/2" Rubber Roller w/8" Flange	
20011-019	107562	3 1/2" Steel Roller w/o Flange	
20012-019	R5FBRSU2	3 1/2" Steel Roller w/5" Flange	
20013-019	107609	4" Steel Roller (short)	
20014-019	107615	Cone Roller	
20015-019	107622	4" Steel Roller (tall)	
20016-019	2945BE	4" Rubber Roller	
20017-019	2950BE	5" Rubber Roller	
20018-019	2955BE	5" Rubber Roller	
20019-019	762	1.5" Roller Standoff	
20020-019	821R	Roller	
20021-019	BGAS/U	Replacement Bearing for Rollers	
20022-019	BGAS/W	Replacement Bearing for Rollers	
20023-019	BR42-8V2	8 Pin 42mm Chain Roller	
20024-019	DC150	Dust Cover for Nose Cone Roller	
20025-019	DC190	Dust Cover	
20026-019	H4P156AY1	4 Point 156 Pitch Shaker	
20027-019	H4P45MAD2	4 Point 45mm Sprocket	
20028-019	H4P45MAY1	4 Point 45mm Sprocket	
20029-019	H4P50MAD2	4 Point 50mm Shaker	
20030-019	HR21MAY1	3 Point Shaker	
20031-019	NRR	Replacement Seal for Roller	
20032-019	NRS	Replacement Cap for Roller	
20033-019	R11AY1	4" Steel Carrier	
20034-019	R12AY1	4 3/4" Steel Carrier Roller	
20035-019	R16W1	6" Steel Carrier	
20036-019	R25BRR2	2 1/2" Steel Roller w/o Flange	
20037-019	R25DNCR2	6 1/2" Steel Roller w/9 1/2" Flange	
20038-019	R25NS2	3 3/4" Taper Steel Roller	
20039-019	R25SNS2	2 1/2" Taper Roller w/4 3/4" Flange	
20040-019	R27AAD2	2 3/4" Steel Idler	
20041-019	R352500	3 1/2" Roller w/o Flange (Kryptane)	
20042-019	R352550	3 1/2" Roller w/5" Flange (Kryptane)	
20043-019	R352580	Roller	
20044-019	R37ABD1	4" Vibrator Roller	
20045-019	R37AUAB1	4" Vibrator Roller	
20046-019	R401000	Roller	
20047-019	R41LSD2	4" Steel Carrier	
20048-019	R4FBRSU2	2 1/2" Steel Roller w/4" Flange	

Machine # _____

Sprockets		
21252-019	H12512B5	Sprocket 125 Pitch 12 Tooth 1 1/4" Bore
21256-019	H12516E4	Sprocket 125 Pitch 16 Tooth 2" Bore
21506-019	H150M6LE	Sprocket, Bolt on 150MM
21507-019	1071-1/2	Weld on Ring for bolt on sprocket
21562-019	H15612E4	Sprocket 156 Pitch 12 Tooth 2" Bore
21752-019	H17512E4	Sprocket 175 Pitch 12 Tooth 2" Bore
21882-019	H18812E4	Sprocket 188 Pitch 12 Tooth 2" Bore
21889-019	H1889E4	Sprocket 188 Pitch 9 Tooth 2" Bore
22000-019	H200M	Sprocket 200mm - 1 1/4" Bore
22005-019	H200M5-8X	Sprocket, Deviner 200mm
22800-019	H28M12B5	Sprocket 28mm 12 Tooth 1 1/4" Bore
23500-019	SG35P20B5T	Sprocket 35mm 20 Tooth Round
23600-019	H36M10RB5X	Sprocket 36mm 10 Tooth 1 1/4" Bore
23620-019	H36M12B5	Sprocket 36mm 12 Tooth 1 1/4" Bore
23621-019	H36M12E4	Sprocket 36mm 12 Tooth 2" Bore
23622-019	H36M12RB5X	Sprocket 36mm 12 Tooth 1 1/4" Bore
23623-019	H36M12RE4X	Sprocket 36mm 12 Tooth 2" Bore
23624-019	H36M22E4	Sprocket 36mm 22 Tooth 2" Bore w/ Pegs
23625-019	H36M18RE4X	Sprocket 36mm 18 Tooth 2" Bore
23640-019	36-14	Sprocket 36mm 14 Tooth 2" Bore 3/8 keyway
24000-019	H40M10B5	Sprocket 40mm 10 Tooth 1 1/4" Bore
24001-019	H40M10RB5X	Sprocket 40mm 10 Tooth 1 1/4" Bore
24200-019	H42M10B5	Sprocket 42mm 10 Tooth 1 1/4" Bore
24201-019	H42M10E4	Sprocket 42mm 10 Tooth 2" Bore
24202-019	H42M10RB5X	Sprocket 42mm 10 Tooth 1 1/4" Bore
24203-019	H42M10RE4X	Sprocket 42mm 10 Tooth 2" Bore
24220-019	H42M12E4	Sprocket 42mm 12 Tooth 2" Bore
24240-019	H42M14RE4X	Sprocket 42mm 14 Tooth 2" Bore
24500-019	H45M10B5	Sprocket 45mm 10 Tooth 1 1/4" Bore
24501-019	H45M10E4	Sprocket 45mm 10 Tooth 2" Bore
24502-019	H45M10RB5X	Sprocket 45mm 10 Tooth 1 1/4" Bore
24503-019	H45M10RE4X	Sprocket 45mm 10 Tooth 2" Bore
24540-019	H45M14E4	Sprocket 45mm 14 Tooth 2" Bore
24541-019	H45M14R1E4X	Sprocket 45mm 14 Tooth 2" Bore
24542-019	H45M14RE4X	Sprocket 45mm 14 Tooth 2" Bore
25000-019	H50M10B5	Sprocket 50mm 10 Tooth 1 1/4" Bore
25001-019	H50M10E4	Sprocket 50mm 10 Tooth 2" Bore
25002-019	H50M10RB5X	Sprocket 50mm 10 Tooth 1 1/4" Bore
25003-019	H50M10RE4X	Sprocket 50mm 10 Tooth 2" Bore
25020-019	H50M12E4	Sprocket 50mm 12 Tooth 2" Bore
25040-019	H50M14R1E4X	Sprocket 50mm 14 Tooth 2" Bore
25041-019	H50M14R7E4X	Sprocket 50mm 14 Tooth 2" Bore Heavy Half
25042-019	H50M14RE4X	Sprocket 50mm 14 Tooth 2" Bore
25620-019	H56M12R1E4X	Sprocket 56mm 12 Tooth 2" Bore

Machine # _____

Sprockets		
21252-019	H12512B5	Sprocket 125 Pitch 12 Tooth 1 1/4" Bore
21256-019	H12516E4	Sprocket 125 Pitch 16 Tooth 2" Bore
21506-019	H150M6LE	Sprocket, Bolt on 150MM
21507-019	1071-1/2	Weld on Ring for bolt on sprocket
21562-019	H15612E4	Sprocket 156 Pitch 12 Tooth 2" Bore
21752-019	H17512E4	Sprocket 175 Pitch 12 Tooth 2" Bore
21882-019	H18812E4	Sprocket 188 Pitch 12 Tooth 2" Bore
21889-019	H1889E4	Sprocket 188 Pitch 9 Tooth 2" Bore
22000-019	H200M	Sprocket 200mm - 1 1/4" Bore
22005-019	H200M5-8X	Sprocket, Deviner 200mm
22800-019	H28M12B5	Sprocket 28mm 12 Tooth 1 1/4" Bore
23500-019	SG35P20B5T	Sprocket 35mm 20 Tooth Round
23600-019	H36M10RB5X	Sprocket 36mm 10 Tooth 1 1/4" Bore
23620-019	H36M12B5	Sprocket 36mm 12 Tooth 1 1/4" Bore
23621-019	H36M12E4	Sprocket 36mm 12 Tooth 2" Bore
23622-019	H36M12RB5X	Sprocket 36mm 12 Tooth 1 1/4" Bore
23623-019	H36M12RE4X	Sprocket 36mm 12 Tooth 2" Bore
23624-019	H36M22E4	Sprocket 36mm 22 Tooth 2" Bore w/ Pegs
23625-019	H36M18RE4X	Sprocket 36mm 18 Tooth 2" Bore
23640-019	36-14	Sprocket 36mm 14 Tooth 2" Bore 3/8 keyway
24000-019	H40M10B5	Sprocket 40mm 10 Tooth 1 1/4" Bore
24001-019	H40M10RB5X	Sprocket 40mm 10 Tooth 1 1/4" Bore
24200-019	H42M10B5	Sprocket 42mm 10 Tooth 1 1/4" Bore
24201-019	H42M10E4	Sprocket 42mm 10 Tooth 2" Bore
24202-019	H42M10RB5X	Sprocket 42mm 10 Tooth 1 1/4" Bore
24203-019	H42M10RE4X	Sprocket 42mm 10 Tooth 2" Bore
24220-019	H42M12E4	Sprocket 42mm 12 Tooth 2" Bore
24240-019	H42M14RE4X	Sprocket 42mm 14 Tooth 2" Bore
24500-019	H45M10B5	Sprocket 45mm 10 Tooth 1 1/4" Bore
24501-019	H45M10E4	Sprocket 45mm 10 Tooth 2" Bore
24502-019	H45M10RB5X	Sprocket 45mm 10 Tooth 1 1/4" Bore
24503-019	H45M10RE4X	Sprocket 45mm 10 Tooth 2" Bore
24540-019	H45M14E4	Sprocket 45mm 14 Tooth 2" Bore
24541-019	H45M14R1E4X	Sprocket 45mm 14 Tooth 2" Bore
24542-019	H45M14RE4X	Sprocket 45mm 14 Tooth 2" Bore
25000-019	H50M10B5	Sprocket 50mm 10 Tooth 1 1/4" Bore
25001-019	H50M10E4	Sprocket 50mm 10 Tooth 2" Bore
25002-019	H50M10RB5X	Sprocket 50mm 10 Tooth 1 1/4" Bore
25003-019	H50M10RE4X	Sprocket 50mm 10 Tooth 2" Bore
25020-019	H50M12E4	Sprocket 50mm 12 Tooth 2" Bore
25040-019	H50M14R1E4X	Sprocket 50mm 14 Tooth 2" Bore
25041-019	H50M14R7E4X	Sprocket 50mm 14 Tooth 2" Bore Heavy Half
25042-019	H50M14RE4X	Sprocket 50mm 14 Tooth 2" Bore
25620-019	H56M12R1E4X	Sprocket 56mm 12 Tooth 2" Bore

Machine # _____

Sprockets		
21252-019	H12512B5	Sprocket 125 Pitch 12 Tooth 1 1/4" Bore
21256-019	H12516E4	Sprocket 125 Pitch 16 Tooth 2" Bore
21506-019	H150M6LE	Sprocket, Bolt on 150MM
21507-019	1071-1/2	Weld on Ring for bolt on sprocket
21562-019	H15612E4	Sprocket 156 Pitch 12 Tooth 2" Bore
21752-019	H17512E4	Sprocket 175 Pitch 12 Tooth 2" Bore
21882-019	H18812E4	Sprocket 188 Pitch 12 Tooth 2" Bore
21889-019	H1889E4	Sprocket 188 Pitch 9 Tooth 2" Bore
22000-019	H200M	Sprocket 200mm - 1 1/4" Bore
22005-019	H200M5-8X	Sprocket, Deviner 200mm
22800-019	H28M12B5	Sprocket 28mm 12 Tooth 1 1/4" Bore
23500-019	SG35P20B5T	Sprocket 35mm 20 Tooth Round
23600-019	H36M10RB5X	Sprocket 36mm 10 Tooth 1 1/4" Bore
23620-019	H36M12B5	Sprocket 36mm 12 Tooth 1 1/4" Bore
23621-019	H36M12E4	Sprocket 36mm 12 Tooth 2" Bore
23622-019	H36M12RB5X	Sprocket 36mm 12 Tooth 1 1/4" Bore
23623-019	H36M12RE4X	Sprocket 36mm 12 Tooth 2" Bore
23624-019	H36M22E4	Sprocket 36mm 22 Tooth 2" Bore w/ Pegs
23625-019	H36M18RE4X	Sprocket 36mm 18 Tooth 2" Bore
23640-019	36-14	Sprocket 36mm 14 Tooth 2" Bore 3/8 keyway
24000-019	H40M10B5	Sprocket 40mm 10 Tooth 1 1/4" Bore
24001-019	H40M10RB5X	Sprocket 40mm 10 Tooth 1 1/4" Bore
24200-019	H42M10B5	Sprocket 42mm 10 Tooth 1 1/4" Bore
24201-019	H42M10E4	Sprocket 42mm 10 Tooth 2" Bore
24202-019	H42M10RB5X	Sprocket 42mm 10 Tooth 1 1/4" Bore
24203-019	H42M10RE4X	Sprocket 42mm 10 Tooth 2" Bore
24220-019	H42M12E4	Sprocket 42mm 12 Tooth 2" Bore
24240-019	H42M14RE4X	Sprocket 42mm 14 Tooth 2" Bore
24500-019	H45M10B5	Sprocket 45mm 10 Tooth 1 1/4" Bore
24501-019	H45M10E4	Sprocket 45mm 10 Tooth 2" Bore
24502-019	H45M10RB5X	Sprocket 45mm 10 Tooth 1 1/4" Bore
24503-019	H45M10RE4X	Sprocket 45mm 10 Tooth 2" Bore
24540-019	H45M14E4	Sprocket 45mm 14 Tooth 2" Bore
24541-019	H45M14R1E4X	Sprocket 45mm 14 Tooth 2" Bore
24542-019	H45M14RE4X	Sprocket 45mm 14 Tooth 2" Bore
25000-019	H50M10B5	Sprocket 50mm 10 Tooth 1 1/4" Bore
25001-019	H50M10E4	Sprocket 50mm 10 Tooth 2" Bore
25002-019	H50M10RB5X	Sprocket 50mm 10 Tooth 1 1/4" Bore
25003-019	H50M10RE4X	Sprocket 50mm 10 Tooth 2" Bore
25020-019	H50M12E4	Sprocket 50mm 12 Tooth 2" Bore
25040-019	H50M14R1E4X	Sprocket 50mm 14 Tooth 2" Bore
25041-019	H50M14R7E4X	Sprocket 50mm 14 Tooth 2" Bore Heavy Half
25042-019	H50M14RE4X	Sprocket 50mm 14 Tooth 2" Bore
25620-019	H56M12R1E4X	Sprocket 56mm 12 Tooth 2" Bore

Machine # _____

Sprockets		
21252-019	H12512B5	Sprocket 125 Pitch 12 Tooth 1 1/4" Bore
21256-019	H12516E4	Sprocket 125 Pitch 16 Tooth 2" Bore
21506-019	H150M6LE	Sprocket, Bolt on 150MM
21507-019	1071-1/2	Weld on Ring for bolt on sprocket
21562-019	H15612E4	Sprocket 156 Pitch 12 Tooth 2" Bore
21752-019	H17512E4	Sprocket 175 Pitch 12 Tooth 2" Bore
21882-019	H18812E4	Sprocket 188 Pitch 12 Tooth 2" Bore
21889-019	H1889E4	Sprocket 188 Pitch 9 Tooth 2" Bore
22000-019	H200M	Sprocket 200mm - 1 1/4" Bore
22005-019	H200M5-8X	Sprocket, Deviner 200mm
22800-019	H28M12B5	Sprocket 28mm 12 Tooth 1 1/4" Bore
23500-019	SG35P20B5T	Sprocket 35mm 20 Tooth Round
23600-019	H36M10RB5X	Sprocket 36mm 10 Tooth 1 1/4" Bore
23620-019	H36M12B5	Sprocket 36mm 12 Tooth 1 1/4" Bore
23621-019	H36M12E4	Sprocket 36mm 12 Tooth 2" Bore
23622-019	H36M12RB5X	Sprocket 36mm 12 Tooth 1 1/4" Bore
23623-019	H36M12RE4X	Sprocket 36mm 12 Tooth 2" Bore
23624-019	H36M22E4	Sprocket 36mm 22 Tooth 2" Bore w/ Pegs
23625-019	H36M18RE4X	Sprocket 36mm 18 Tooth 2" Bore
23640-019	36-14	Sprocket 36mm 14 Tooth 2" Bore 3/8 keyway
24000-019	H40M10B5	Sprocket 40mm 10 Tooth 1 1/4" Bore
24001-019	H40M10RB5X	Sprocket 40mm 10 Tooth 1 1/4" Bore
24200-019	H42M10B5	Sprocket 42mm 10 Tooth 1 1/4" Bore
24201-019	H42M10E4	Sprocket 42mm 10 Tooth 2" Bore
24202-019	H42M10RB5X	Sprocket 42mm 10 Tooth 1 1/4" Bore
24203-019	H42M10RE4X	Sprocket 42mm 10 Tooth 2" Bore
24220-019	H42M12E4	Sprocket 42mm 12 Tooth 2" Bore
24240-019	H42M14RE4X	Sprocket 42mm 14 Tooth 2" Bore
24500-019	H45M10B5	Sprocket 45mm 10 Tooth 1 1/4" Bore
24501-019	H45M10E4	Sprocket 45mm 10 Tooth 2" Bore
24502-019	H45M10RB5X	Sprocket 45mm 10 Tooth 1 1/4" Bore
24503-019	H45M10RE4X	Sprocket 45mm 10 Tooth 2" Bore
24540-019	H45M14E4	Sprocket 45mm 14 Tooth 2" Bore
24541-019	H45M14R1E4X	Sprocket 45mm 14 Tooth 2" Bore
24542-019	H45M14RE4X	Sprocket 45mm 14 Tooth 2" Bore
25000-019	H50M10B5	Sprocket 50mm 10 Tooth 1 1/4" Bore
25001-019	H50M10E4	Sprocket 50mm 10 Tooth 2" Bore
25002-019	H50M10RB5X	Sprocket 50mm 10 Tooth 1 1/4" Bore
25003-019	H50M10RE4X	Sprocket 50mm 10 Tooth 2" Bore
25020-019	H50M12E4	Sprocket 50mm 12 Tooth 2" Bore
25040-019	H50M14R1E4X	Sprocket 50mm 14 Tooth 2" Bore
25041-019	H50M14R7E4X	Sprocket 50mm 14 Tooth 2" Bore Heavy Half
25042-019	H50M14RE4X	Sprocket 50mm 14 Tooth 2" Bore
25620-019	H56M12R1E4X	Sprocket 56mm 12 Tooth 2" Bore

Machine # _____

Sprockets		
21252-019	H12512B5	Sprocket 125 Pitch 12 Tooth 1 1/4" Bore
21256-019	H12516E4	Sprocket 125 Pitch 16 Tooth 2" Bore
21506-019	H150M6LE	Sprocket, Bolt on 150MM
21507-019	1071-1/2	Weld on Ring for bolt on sprocket
21562-019	H15612E4	Sprocket 156 Pitch 12 Tooth 2" Bore
21752-019	H17512E4	Sprocket 175 Pitch 12 Tooth 2" Bore
21882-019	H18812E4	Sprocket 188 Pitch 12 Tooth 2" Bore
21889-019	H1889E4	Sprocket 188 Pitch 9 Tooth 2" Bore
22000-019	H200M	Sprocket 200mm - 1 1/4" Bore
22005-019	H200M5-8X	Sprocket, Deviner 200mm
22800-019	H28M12B5	Sprocket 28mm 12 Tooth 1 1/4" Bore
23500-019	SG35P20B5T	Sprocket 35mm 20 Tooth Round
23600-019	H36M10RB5X	Sprocket 36mm 10 Tooth 1 1/4" Bore
23620-019	H36M12B5	Sprocket 36mm 12 Tooth 1 1/4" Bore
23621-019	H36M12E4	Sprocket 36mm 12 Tooth 2" Bore
23622-019	H36M12RB5X	Sprocket 36mm 12 Tooth 1 1/4" Bore
23623-019	H36M12RE4X	Sprocket 36mm 12 Tooth 2" Bore
23624-019	H36M22E4	Sprocket 36mm 22 Tooth 2" Bore w/ Pegs
23625-019	H36M18RE4X	Sprocket 36mm 18 Tooth 2" Bore
23640-019	36-14	Sprocket 36mm 14 Tooth 2" Bore 3/8 keyway
24000-019	H40M10B5	Sprocket 40mm 10 Tooth 1 1/4" Bore
24001-019	H40M10RB5X	Sprocket 40mm 10 Tooth 1 1/4" Bore
24200-019	H42M10B5	Sprocket 42mm 10 Tooth 1 1/4" Bore
24201-019	H42M10E4	Sprocket 42mm 10 Tooth 2" Bore
24202-019	H42M10RB5X	Sprocket 42mm 10 Tooth 1 1/4" Bore
24203-019	H42M10RE4X	Sprocket 42mm 10 Tooth 2" Bore
24220-019	H42M12E4	Sprocket 42mm 12 Tooth 2" Bore
24240-019	H42M14RE4X	Sprocket 42mm 14 Tooth 2" Bore
24500-019	H45M10B5	Sprocket 45mm 10 Tooth 1 1/4" Bore
24501-019	H45M10E4	Sprocket 45mm 10 Tooth 2" Bore
24502-019	H45M10RB5X	Sprocket 45mm 10 Tooth 1 1/4" Bore
24503-019	H45M10RE4X	Sprocket 45mm 10 Tooth 2" Bore
24540-019	H45M14E4	Sprocket 45mm 14 Tooth 2" Bore
24541-019	H45M14R1E4X	Sprocket 45mm 14 Tooth 2" Bore
24542-019	H45M14RE4X	Sprocket 45mm 14 Tooth 2" Bore
25000-019	H50M10B5	Sprocket 50mm 10 Tooth 1 1/4" Bore
25001-019	H50M10E4	Sprocket 50mm 10 Tooth 2" Bore
25002-019	H50M10RB5X	Sprocket 50mm 10 Tooth 1 1/4" Bore
25003-019	H50M10RE4X	Sprocket 50mm 10 Tooth 2" Bore
25020-019	H50M12E4	Sprocket 50mm 12 Tooth 2" Bore
25040-019	H50M14R1E4X	Sprocket 50mm 14 Tooth 2" Bore
25041-019	H50M14R7E4X	Sprocket 50mm 14 Tooth 2" Bore Heavy Half
25042-019	H50M14RE4X	Sprocket 50mm 14 Tooth 2" Bore
25620-019	H56M12R1E4X	Sprocket 56mm 12 Tooth 2" Bore

Machine # _____

Sprockets		
21252-019	H12512B5	Sprocket 125 Pitch 12 Tooth 1 1/4" Bore
21256-019	H12516E4	Sprocket 125 Pitch 16 Tooth 2" Bore
21506-019	H150M6LE	Sprocket, Bolt on 150MM
21507-019	1071-1/2	Weld on Ring for bolt on sprocket
21562-019	H15612E4	Sprocket 156 Pitch 12 Tooth 2" Bore
21752-019	H17512E4	Sprocket 175 Pitch 12 Tooth 2" Bore
21882-019	H18812E4	Sprocket 188 Pitch 12 Tooth 2" Bore
21889-019	H1889E4	Sprocket 188 Pitch 9 Tooth 2" Bore
22000-019	H200M	Sprocket 200mm - 1 1/4" Bore
22005-019	H200M5-8X	Sprocket, Deviner 200mm
22800-019	H28M12B5	Sprocket 28mm 12 Tooth 1 1/4" Bore
23500-019	SG35P20B5T	Sprocket 35mm 20 Tooth Round
23600-019	H36M10RB5X	Sprocket 36mm 10 Tooth 1 1/4" Bore
23620-019	H36M12B5	Sprocket 36mm 12 Tooth 1 1/4" Bore
23621-019	H36M12E4	Sprocket 36mm 12 Tooth 2" Bore
23622-019	H36M12RB5X	Sprocket 36mm 12 Tooth 1 1/4" Bore
23623-019	H36M12RE4X	Sprocket 36mm 12 Tooth 2" Bore
23624-019	H36M22E4	Sprocket 36mm 22 Tooth 2" Bore w/ Pegs
23625-019	H36M18RE4X	Sprocket 36mm 18 Tooth 2" Bore
23640-019	36-14	Sprocket 36mm 14 Tooth 2" Bore 3/8 keyway
24000-019	H40M10B5	Sprocket 40mm 10 Tooth 1 1/4" Bore
24001-019	H40M10RB5X	Sprocket 40mm 10 Tooth 1 1/4" Bore
24200-019	H42M10B5	Sprocket 42mm 10 Tooth 1 1/4" Bore
24201-019	H42M10E4	Sprocket 42mm 10 Tooth 2" Bore
24202-019	H42M10RB5X	Sprocket 42mm 10 Tooth 1 1/4" Bore
24203-019	H42M10RE4X	Sprocket 42mm 10 Tooth 2" Bore
24220-019	H42M12E4	Sprocket 42mm 12 Tooth 2" Bore
24240-019	H42M14RE4X	Sprocket 42mm 14 Tooth 2" Bore
24500-019	H45M10B5	Sprocket 45mm 10 Tooth 1 1/4" Bore
24501-019	H45M10E4	Sprocket 45mm 10 Tooth 2" Bore
24502-019	H45M10RB5X	Sprocket 45mm 10 Tooth 1 1/4" Bore
24503-019	H45M10RE4X	Sprocket 45mm 10 Tooth 2" Bore
24540-019	H45M14E4	Sprocket 45mm 14 Tooth 2" Bore
24541-019	H45M14R1E4X	Sprocket 45mm 14 Tooth 2" Bore
24542-019	H45M14RE4X	Sprocket 45mm 14 Tooth 2" Bore
25000-019	H50M10B5	Sprocket 50mm 10 Tooth 1 1/4" Bore
25001-019	H50M10E4	Sprocket 50mm 10 Tooth 2" Bore
25002-019	H50M10RB5X	Sprocket 50mm 10 Tooth 1 1/4" Bore
25003-019	H50M10RE4X	Sprocket 50mm 10 Tooth 2" Bore
25020-019	H50M12E4	Sprocket 50mm 12 Tooth 2" Bore
25040-019	H50M14R1E4X	Sprocket 50mm 14 Tooth 2" Bore
25041-019	H50M14R7E4X	Sprocket 50mm 14 Tooth 2" Bore Heavy Half
25042-019	H50M14RE4X	Sprocket 50mm 14 Tooth 2" Bore
25620-019	H56M12R1E4X	Sprocket 56mm 12 Tooth 2" Bore