

17083

Heartland

1 of 2

#1783
HERTAND
4RSPH65LAH

HHD 3953018181L1400003

2011-01010

DTS-80140

3.89

MINIPIRE

2015-032
RTDY#1082025

5953-068 2011-01001

H01-28-072 2023-0180

MINIPIRE

2015-032

RTDY#1082025

2015-032

RTDY#1082025

DTS-8009/

2010-00222

6.4

6.4

212 0608

ONC1620-90

FT125

V520P-32

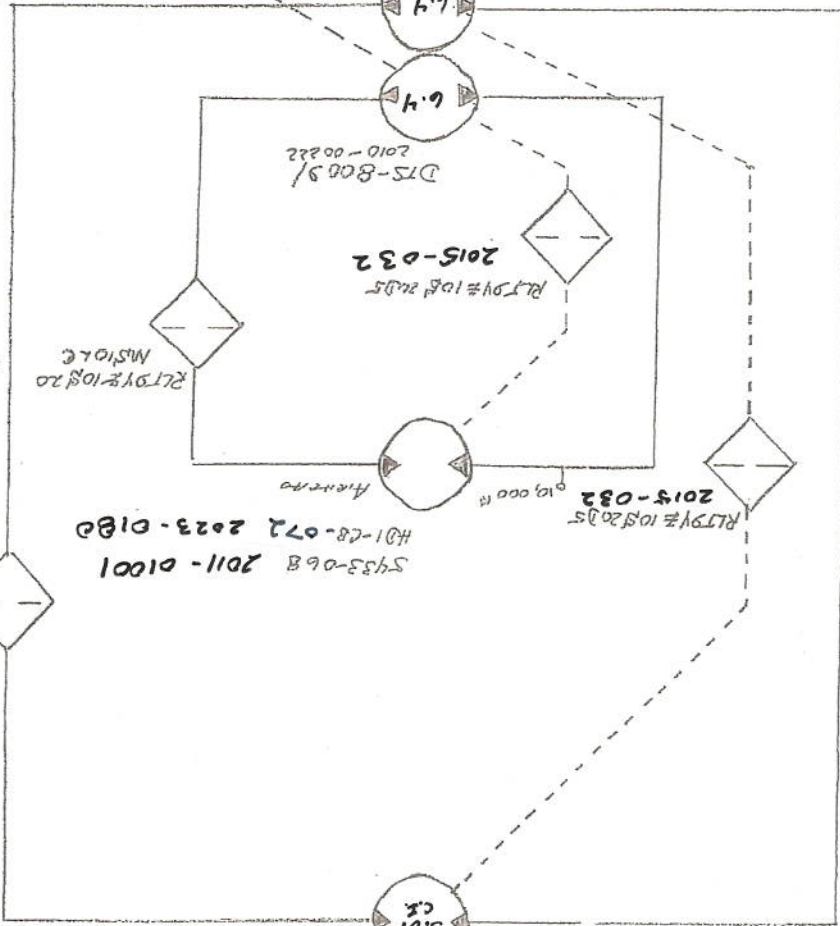
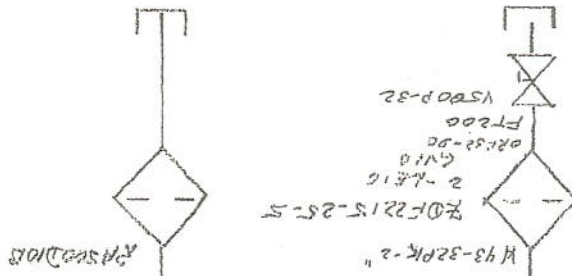
H43-32PK-2"

2-4.816

OR22-20

FT200

V520P-32

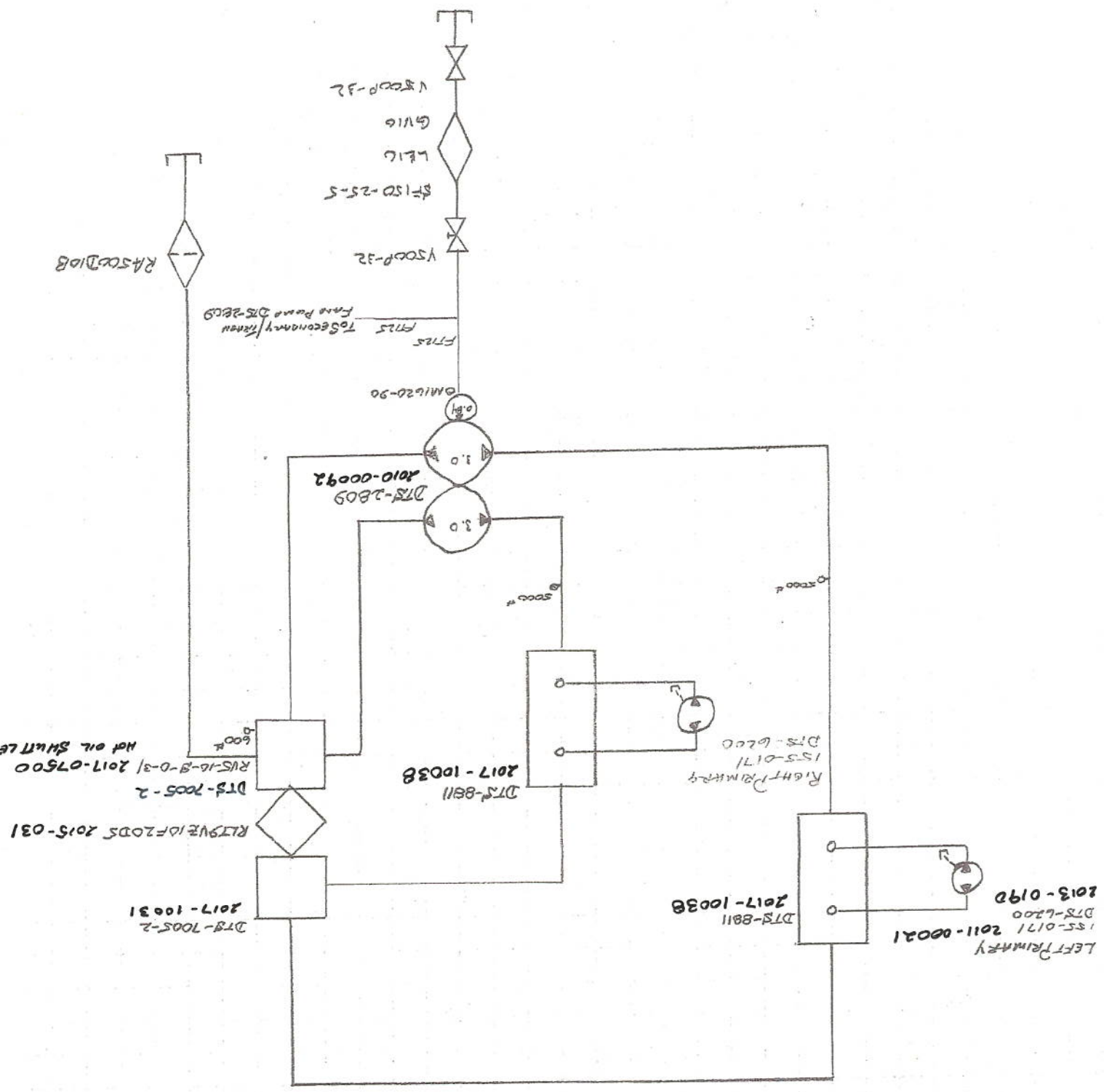


2015-044

RTDY#10820

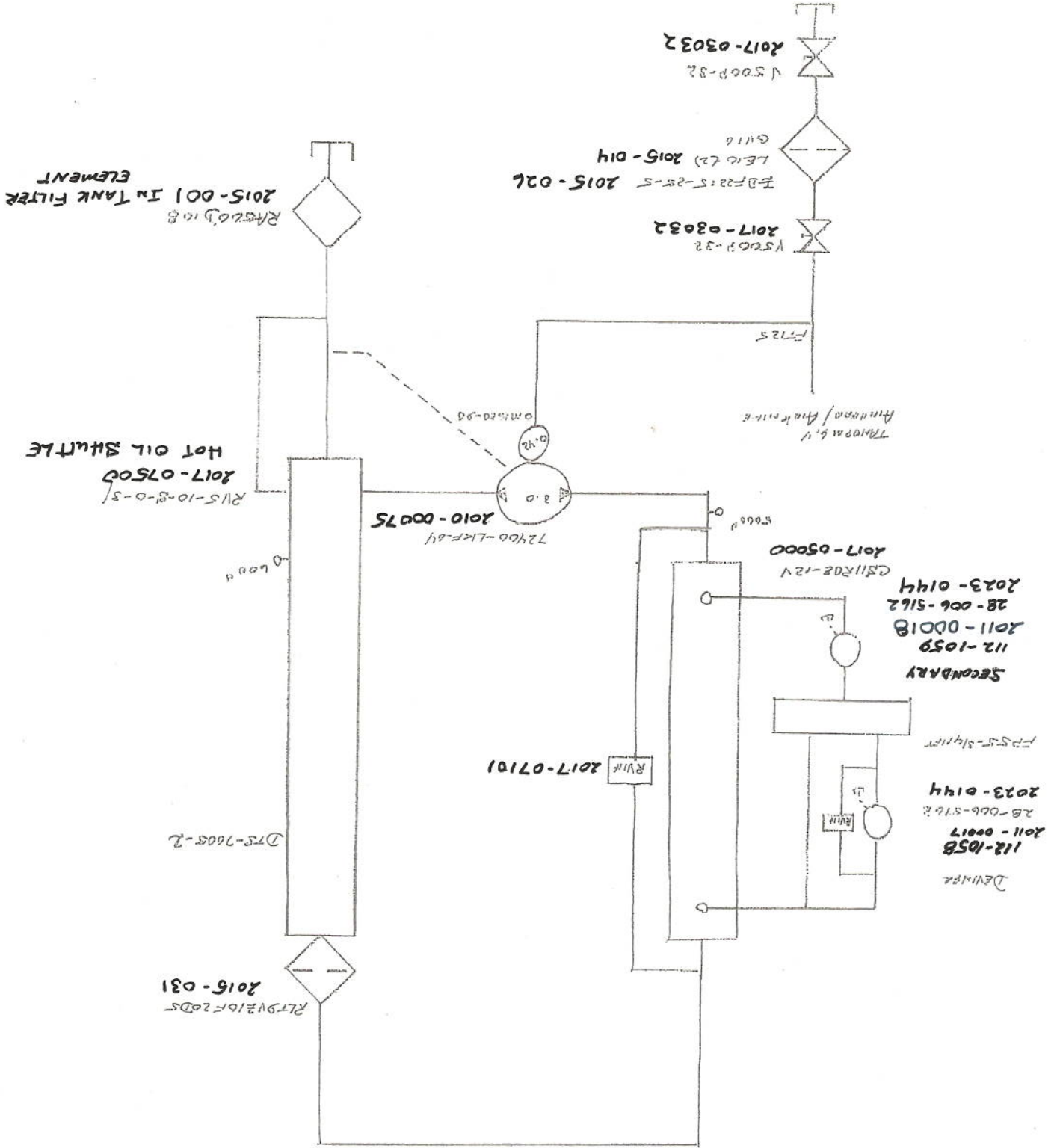
MISTOLE

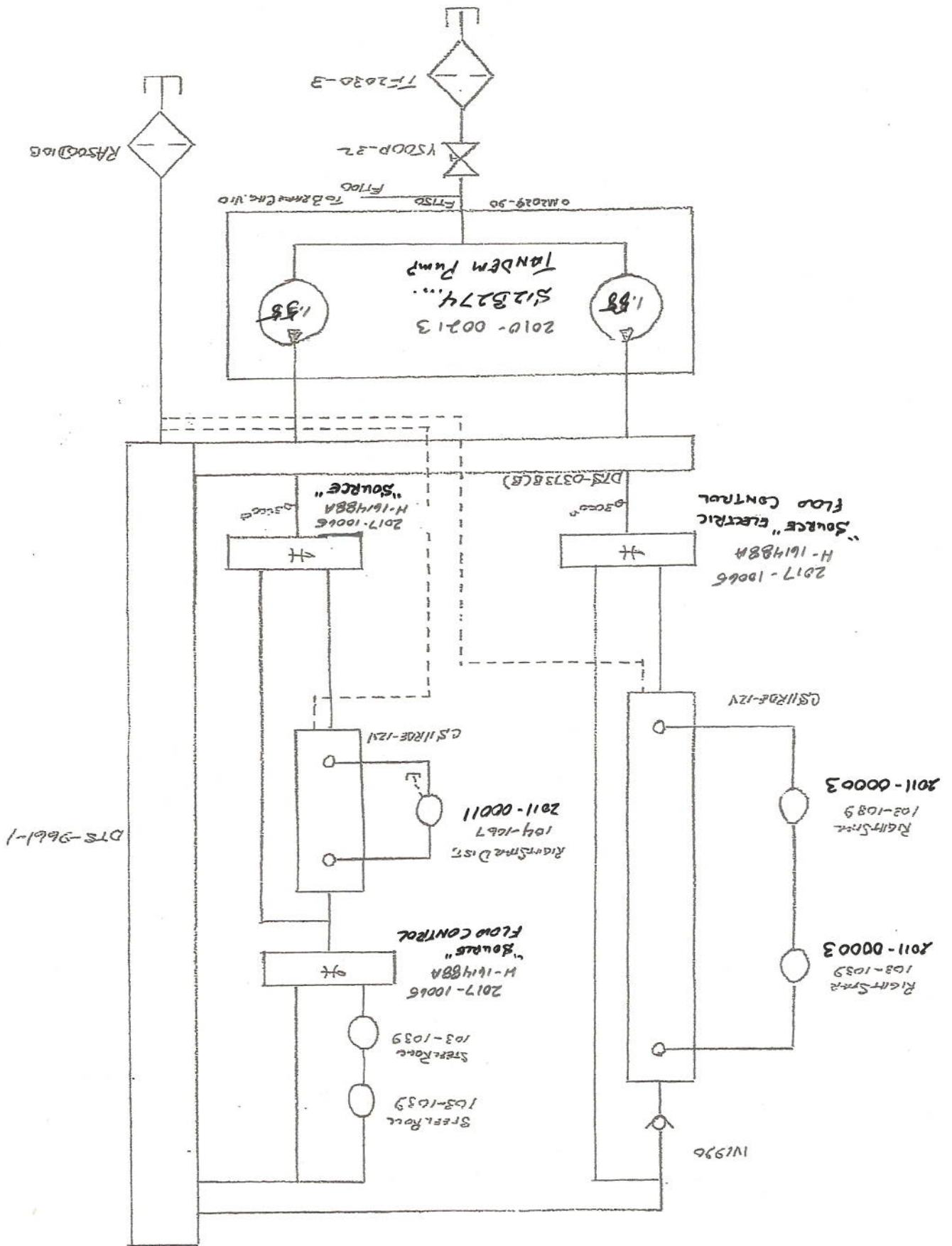
TO SIMATE 72400



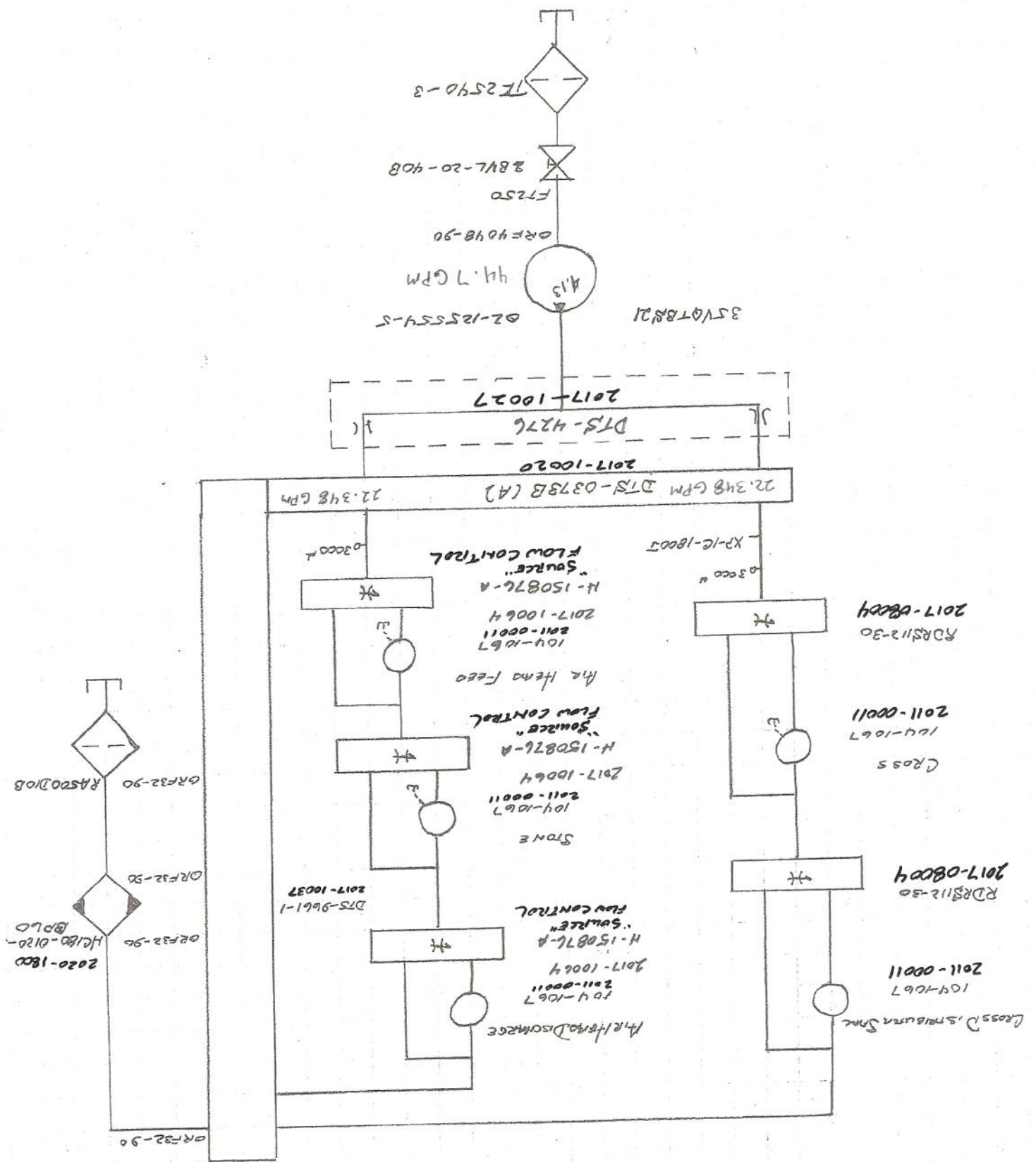
17083
 HEARTLAND
 APR 2014

#170B3
HEADSTAND
4RSPH65LPH

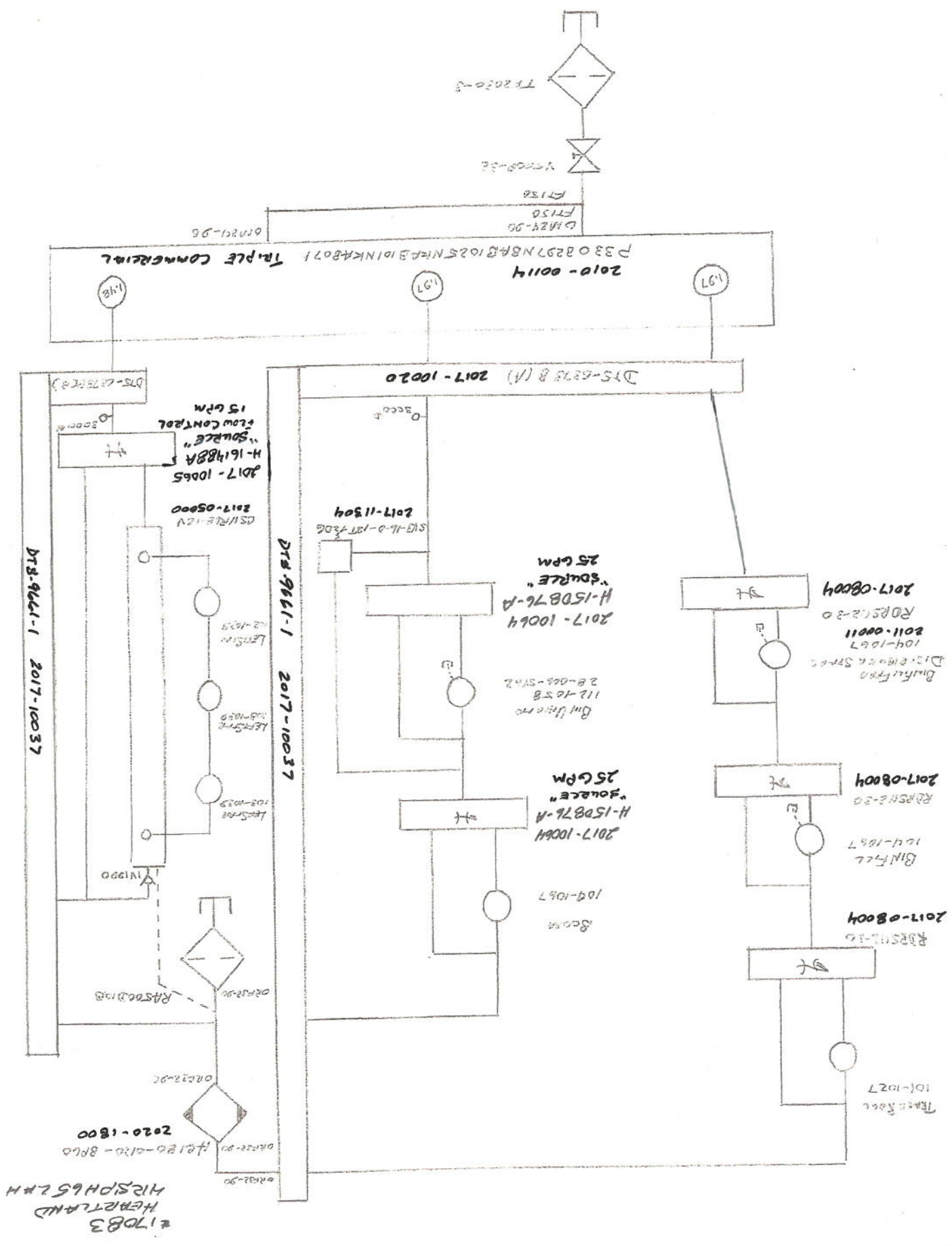




#17083
HERB AND
HRP 65 LPH



#17083
 HEARLAND
 MRS PH 65 LAM



2010-0014
P3308297NFB1025NFB101NKA8071 Triple Commercial

DTA 9661-1 2017-10020

DTA 9661-1 2017-10037

DTA 9661-1 2017-10037

21DB3
HERTZLAND
HIRSPH65LPH

2017-10065
H-161488A
"SOURCE"
flow control
15 GPM

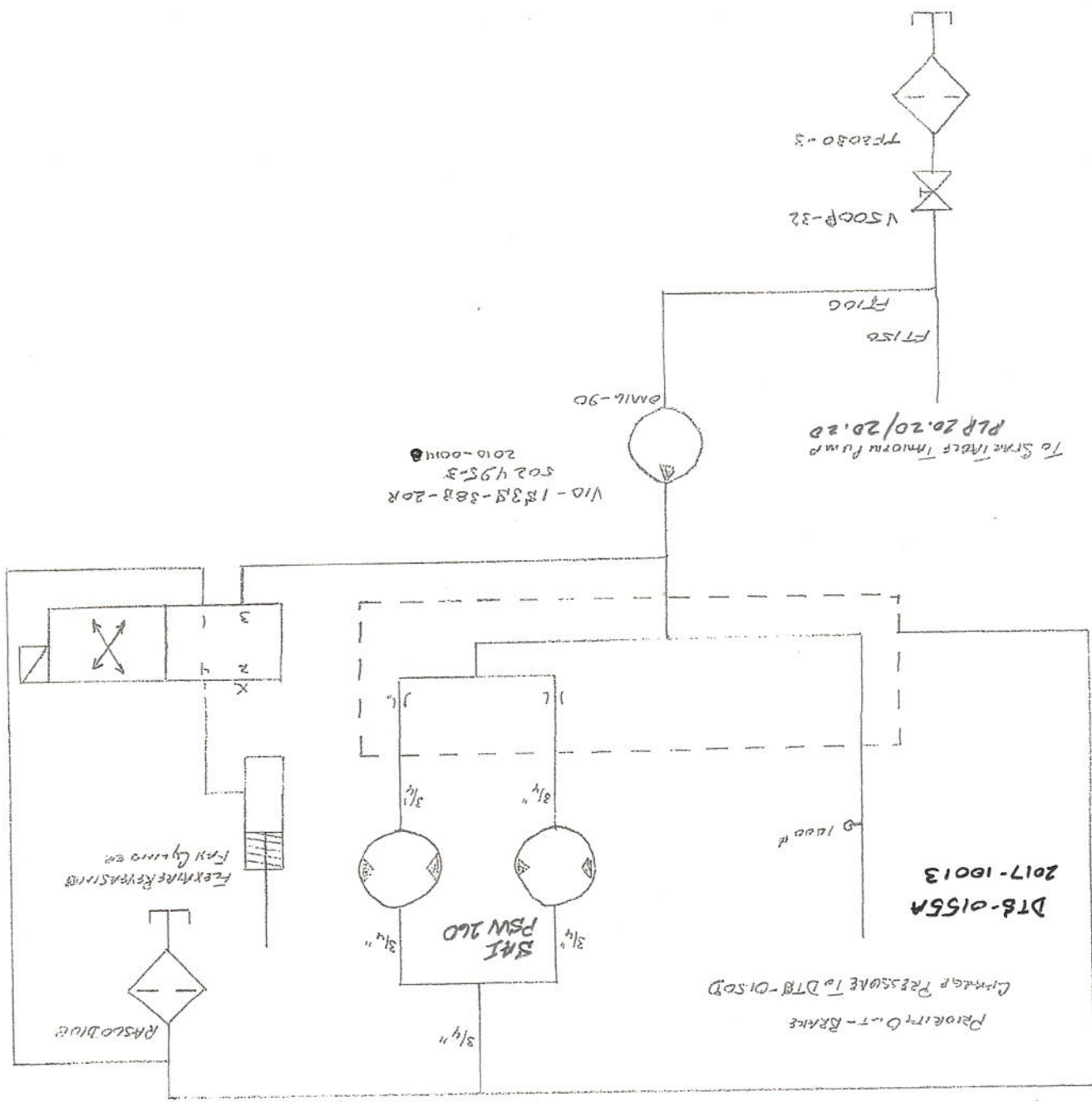
2017-10064
H-150876-A
"SOURCE"
25 GPM

2017-08004
R4500105-30
Bin Fill
104-1067
2011-00011
104-1067
Bin Fill
104-1067

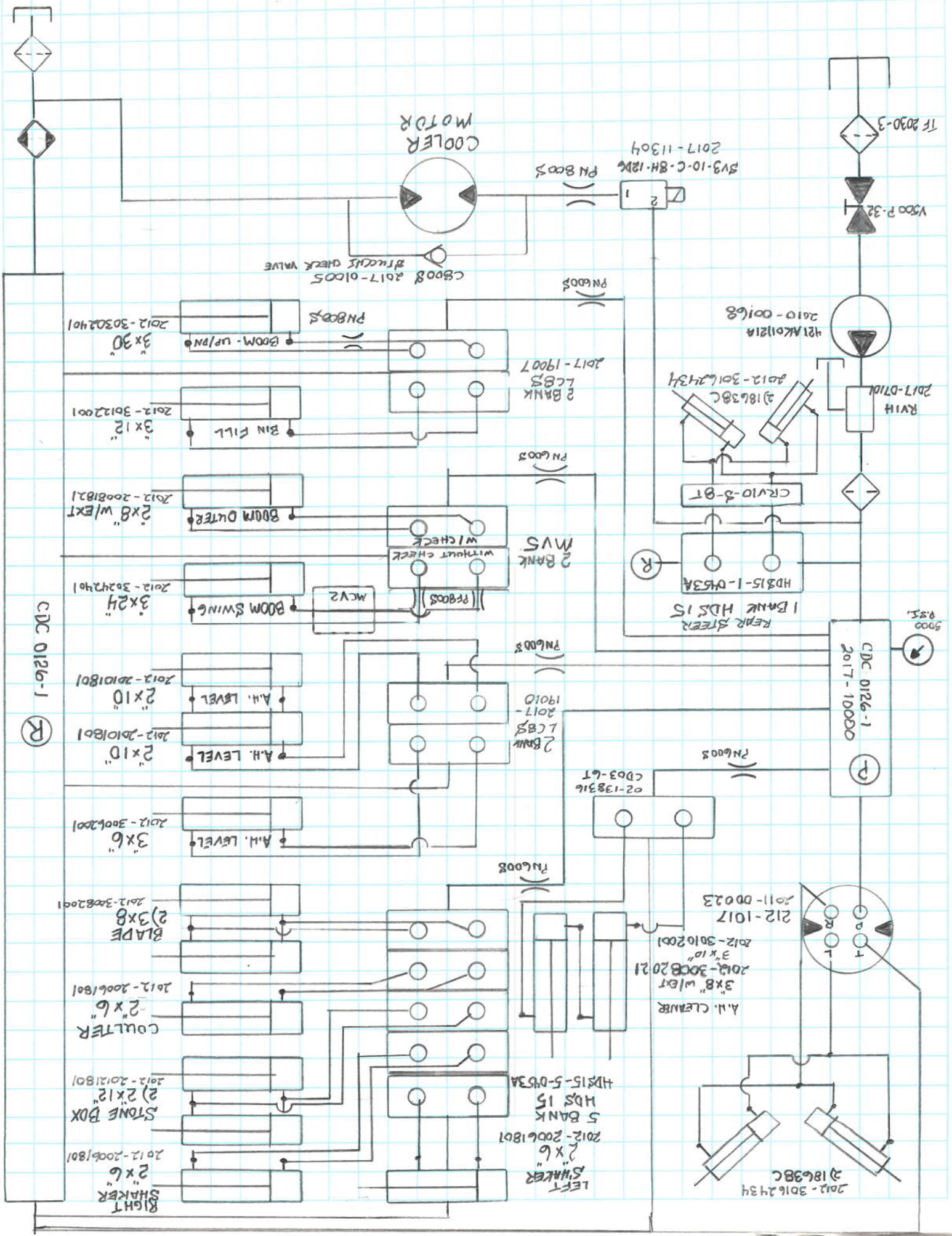
2017-08004
R4500105-30
Bin Full
104-1067

2017-08004
R4500105-30
Bin Full
104-1067

2020-1800
R4500106
R4500105



#1783
 HERTLAND
 482216514



CDC 0126-1
2017-10000

COOLER
MOTOR

TF 2030-3

V500 P-32

421 AK0121A
2010-00168

RV14
2017-0710

2) 18638C
2012-30162434

CRV10-3-8T

HDS15-1-0V3A

1 BANK HDS 15
REAR STEER

9500
PSI

02-138316
CD63-6T

212-1017
2012-30102001
3" x 10"
A.H. CLEANER

2011-00023

2012-30082021
3" x 8" w/ext

2012-20061801
2" x 6"

2012-20061801
COULTER

2012-20121801
2) 2" x 12"

2012-20061801
STONE BOX

2012-20061801
2" x 6"

2012-30162434
2) 18638C

HDS15-5-0V3A

5 BANK
HDS 15

2012-20061801
2" x 6"
LEFT
SWANKER

PN6008

PN6008

PN6005

PN6005

CB808 2017-01005
STUCKS CHECK VALVE

S13-10-C-8H-12B
PN8005
2017-11304

PN8005
BOOM-UP/PN
3" x 30"
2012-30302401

PN8005
BIN FILL
3" x 12"
2012-30122001

PN8005
BOOM OUTER
2" x 8" w/ext
2012-20081821

PN8005
BOOM SWING
3" x 24"
2012-30242401

PN8005
2 BANK LCB'S
19010
2017-19010

PN8005
2" x 10"
A.H. LEVEL
2012-20101801

PN8005
3" x 6"
A.H. LEVEL
2012-30062001

PN8005
2) 3" x 8"
BLADE
2012-30082001

PN8005
2" x 6"
COULTER
2012-20061801

PN8005
2) 2" x 12"
STONE BOX
2012-20121801

PN8005
2" x 6"
SHAKER
2012-20061801

PN8005
2" x 6"
SHAKER
2012-20061801

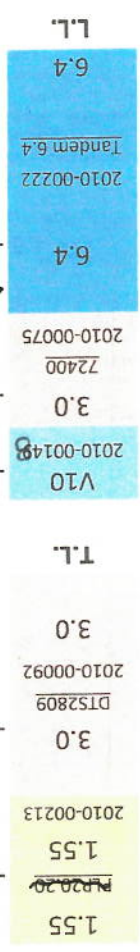
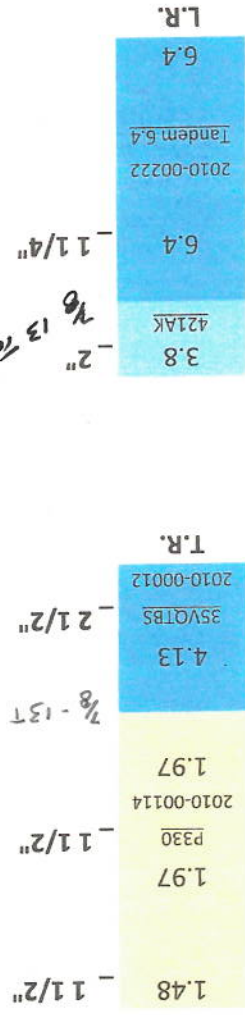
CDC 0126-1

(R)

Durst 4PD09 2023-0207 4 Hole G.B.
 19310 2023-0192 Drive plate

Cummins QSX15 520 H.P. Tier 3

Heartland #17083



★
 1-2013.0392
 COUPLER PIN
 (1" 15 TOOTH)
 1-2013.0391
 COUPLER
 USA
 3" - 13 TOOTH
 REMOVE COUPLER
 2010-00148
 SHOULD HAVE BEEN

1" 15 TOOTH

- 4" FWM TF2540-3
- 2 1/2" 90 ST EL
- 2 1/2" CLS NIP
- 2 BVL20-40B
- FT 250
- 35VGTBS
- 3" x 2" BUSH
- 2" CLS NIP
- V500P-32
- FT 200
- ORF32-90
- ZDF2215-25-5
- 421 AK
- 2" x 2" BUSH
- 2" CLS NIP
- V500P-32
- FT 200
- ORF32-90
- 2" x 1 1/4" BUSH
- 2" 90 ST EL
- 2" TEE
- 2" x 1 1/4" BUSH
- FT 125
- TANDEM 6.4

- 3" FWM TF2030-3
- 2" 90 ST EL
- 2" CLS NIP
- V500P-32
- 2" 90 ST EL
- FT 200
- ORF32-90
- 2" x 1 1/2" BUSH
- 2" TEE
- 2" x 1 1/2" BUSH
- FT 150
- P330
- 2" 90 ST EL
- 2" x 1 1/2" BUSH
- FT 150
- 2" x 1 1/4" BUSH
- FT 125
- TANDEM 6.4

- 3" FWM TF2030-3
- 2" 90 ST EL
- 2" CLS NIP
- V500P-32
- 2" 90 ST EL
- FT 150
- P330
- 2" 90 ST EL
- 2" x 1 1/2" BUSH
- FT 150
- 2" x 1 1/2" BUSH
- FT 125
- TANDEM 6.4

- 3" FWM TF2030-3
- 4" x 2" BUSH
- 2" CLS NIP
- V500P-32
- FT 200
- ORF32-90
- ZDF2215-25-5
- W43-32PK
- 2" 90 ST EL
- 2" CLS NIP
- V500P-32
- 2" x 1 1/4" BUSH
- 2" TEE
- 2" x 1 1/2" BUSH
- FT 150
- 5128274
- 2" 90 ST EL
- 2" CLS NIP
- V500P-32
- FT 125
- TANDEM 6.4

