

DURST GERM Box
HDI-CB-064

LEFT PRIMARY
578-68-05-K3
104-1747
8.0 m

SF120-25-1
L610
L610

4.623-360
1.28 m³
Seri. No. 0502021096
1.28 m³
NIMHINE
S12-17FK-04
NIMHINE

RT9XZ10S20B5
Transformer 1500V/220V/0.8
30P110QBWA3K9161
KCMRST 932624

DTS-4276

RIGHT TANK
104-1747
8.0 m

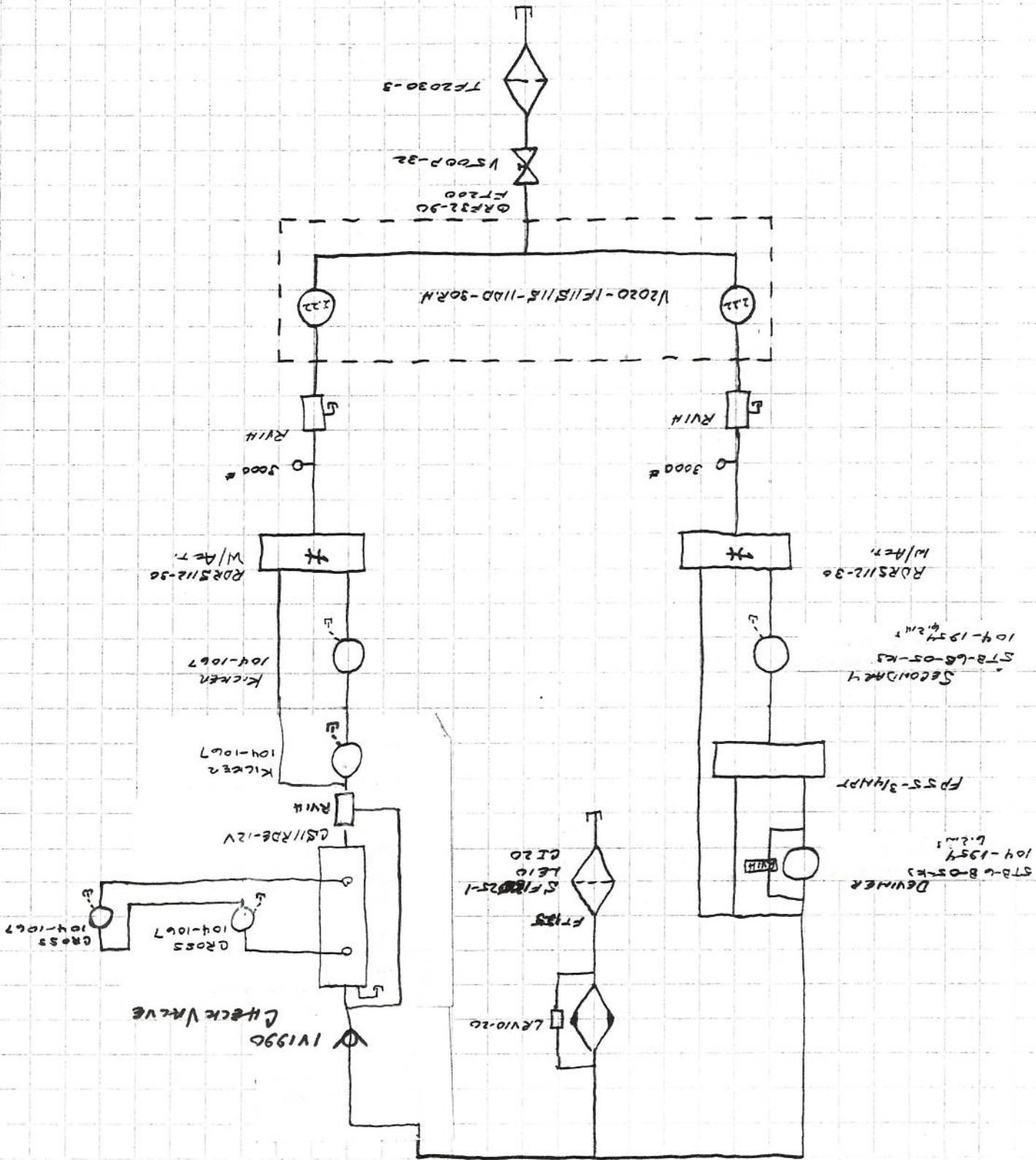
6 RPT W
4.6 Hydro-PRIMARY Circuit

3/2/03
WALTER SEEDFARM
#03219
4 RPT W

9/2/03
 #63219
 WALEY SEOFAN
 YR PM

Secondary - Gross Circuits

6 RPTM



DEWIMER
 STB-8-05-K3
 104-1954
 6.2m

FP55-34MP

SECONDARY
 STB-6-05-K3
 104-1954
 6.2m

RDR5112-30
 W/ACT

FT135
 SFR025-1
 LE10
 CI20

LV10-20

CHECK VALVE

1V199C

GS11RDE-12V

RV14

KICKER
 104-1067

KICKER
 104-1067

RDR5112-30
 W/ACT

3000R

3000R

RV14

RV14

V2020-1F11S115-1100-30R.H

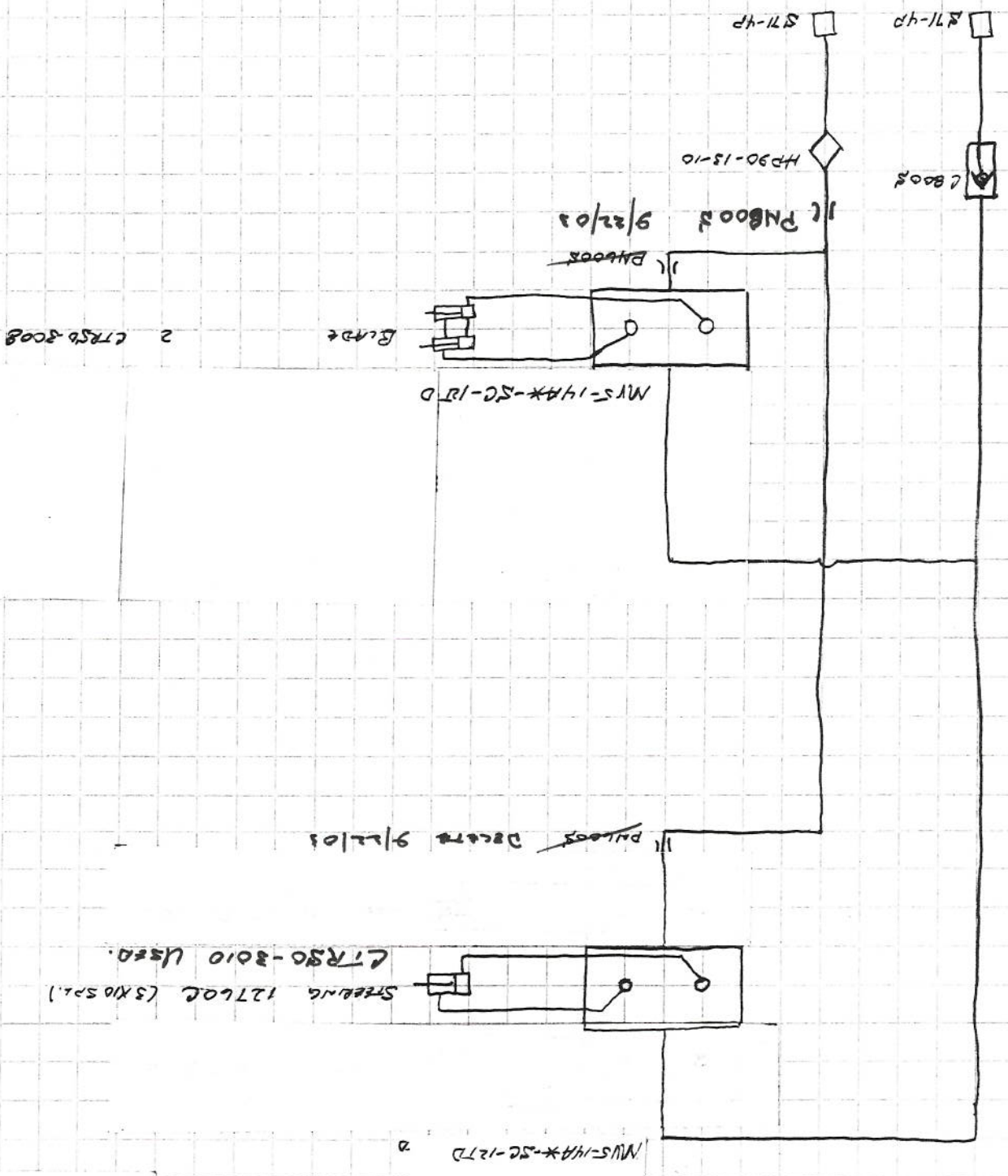
TF2030-3

V500P-32

GRF32-90
 FT200

9/2/03
 #03219
 WOLLEY SEED FROM
 HRTM1

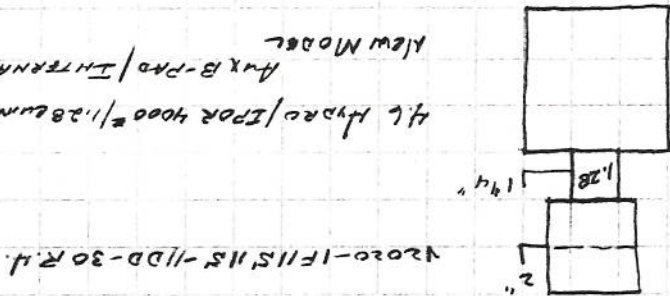
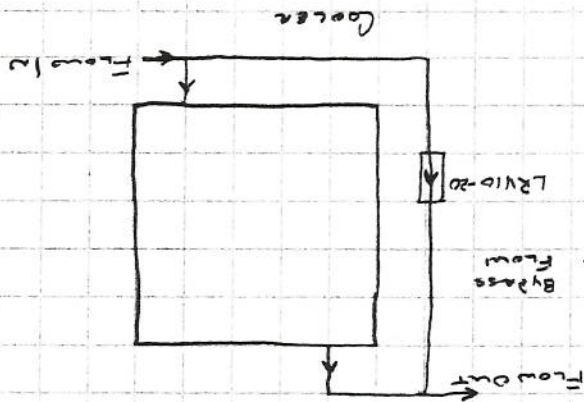
2002 - 6RPTM
 Valve Brake Circuit



9/2/03
 #03219
 WOLBY SYSTEM
 4RPTW

2002 PTV - HYDRAULIC Di. TABLE

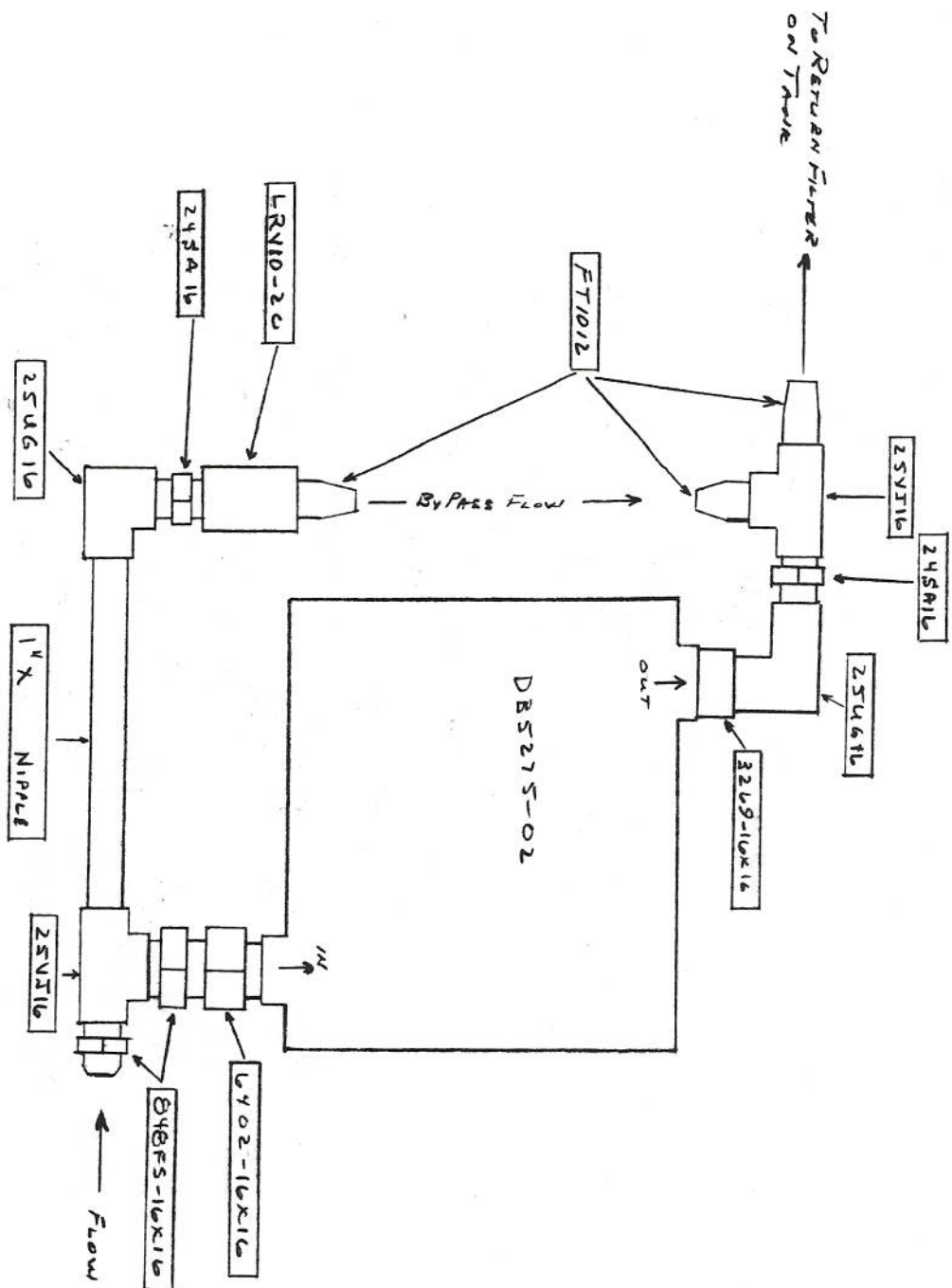
- ③
- * V2020
- FT200
- V500P-32
- 2" C/S NIP
- TF2030-3
- 2" X 1 1/4" BRASS
- 1 1/4" C/S NIP
- V500P-20
- 1 1/4" C/S NIP
- SP20-25-5
- FT1215
- * 4L HYDRO LHC.



4L HYDRO/EPOR 4000 #/1.28 GPM ENG./C.V./ELEC. CONTR./1 1/4" - 1 1/4" /
 MAX B-PAD / INTERMEDIATE H.O.S.
 NEW MODEL

DURST GEAR BOX
 H01-CR-06Y

2002 Pull Winder Cooler Hydraulic Pumps



2002
 Pull Window Frame
 LEFT HAND D. DISCHARGE

